



RENAULT Captur

Captur ENERGY TCe 90 Start&Stop

VIN NO VF12R5A1H52443995
Registration Number 1H52443995



MOT Date	Number of Owners	Number of Keys	Odometer Reading
2026-03-01	-	2	131784 km
Last Service	Last Service Mileage	First Registration Date	Country First Registered
2025-03-21	126042	2015-03-04	-

Inspection Report Summary

Customer	BCA Online	Report Number	P20250916093605
Inspection Date / Place	2025-09-16 / BCA Neuss	Cosmetic Grade	5

Vehicle Summary

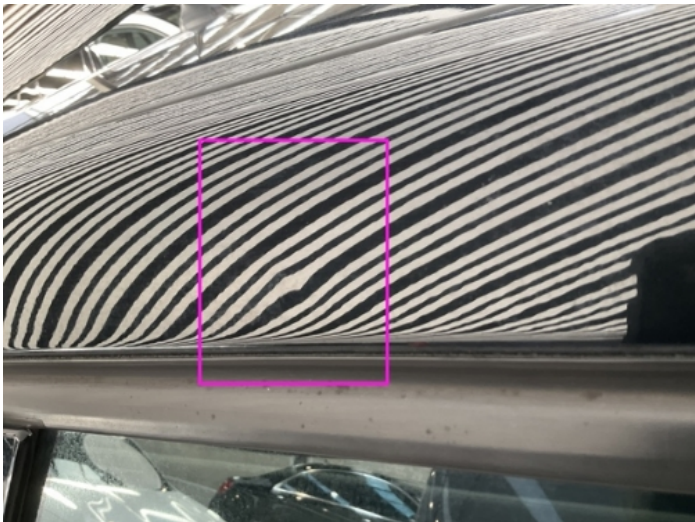
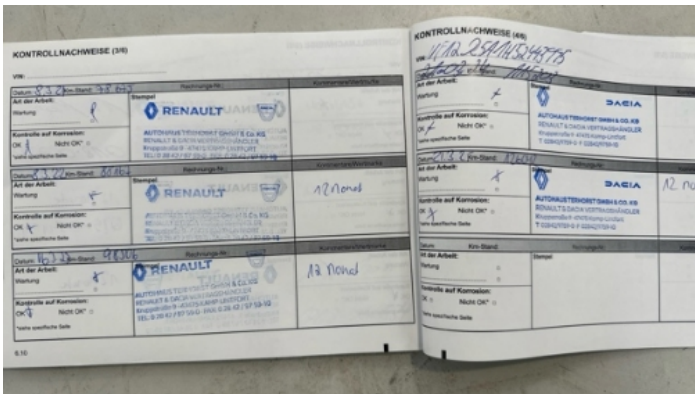
Vehicle Condition	Runner	VAT Type	Margin
Fuel Type	Petrol	Road Worthy	Yes
Colour	Silver	Engine Size (cc)	898
Engine Size	0.9	No of Doors	5
Body Type	SUV	Drive Train	Front
Seat Colour		No of Seats	5
Seat Covering Name	Grau	Seat Covering	Cloth
Charging Cables		NEDC CO2 Rating (q/km)	114
Gearbox Type	Manual		

Vehicle History & Documents

Service Book Available	Full Service History	Next Service Mileage	km
Previous Usage		Imported	Yes
Manufacturer Warrenty			







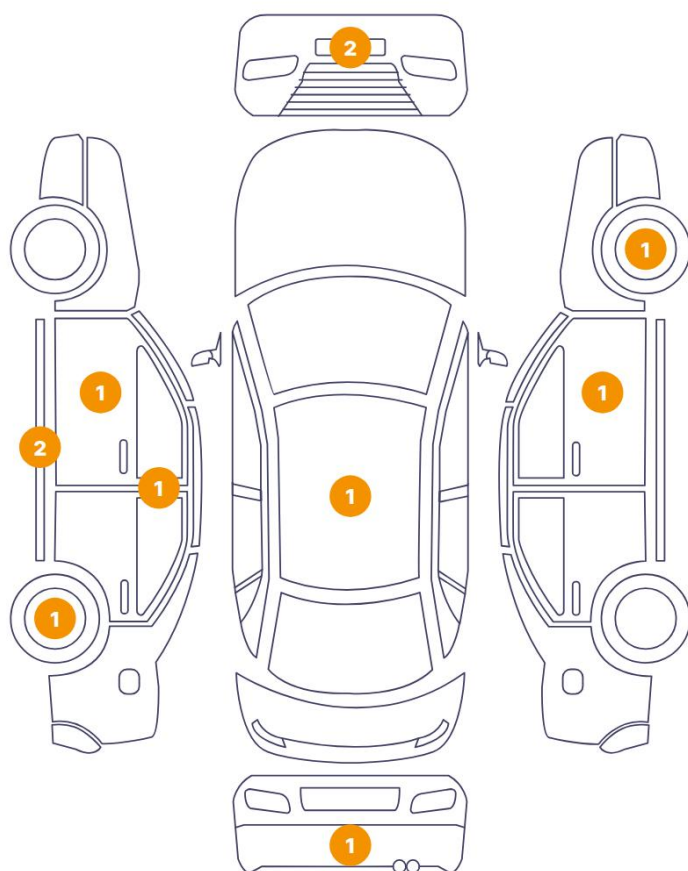
Equipment

USB Socket	Alloys wheels	Bluetooth telephone interface	Remote adjusting wing mirrors
Reversing Camera	Stability control	Leather steering wheel	Rear parking sensors
Airbag Status	Anti-lock braking	Cruise control	Remote central locking
Satellite navigation	Electrically folding wing mirrors	Radio	

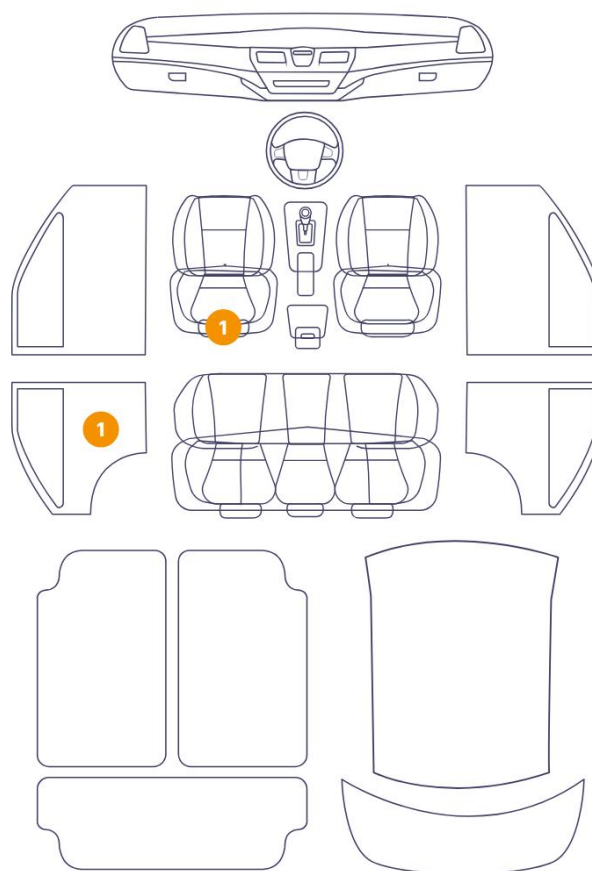
Equipment Details

Air Conditioning	Climate Control	Alloy Wheel Size	16
Seat Heating	Front		

11 Schäden



2 Schäden

6/12 - Report Number P20250916093605

13 Corner Bumper / Front Left

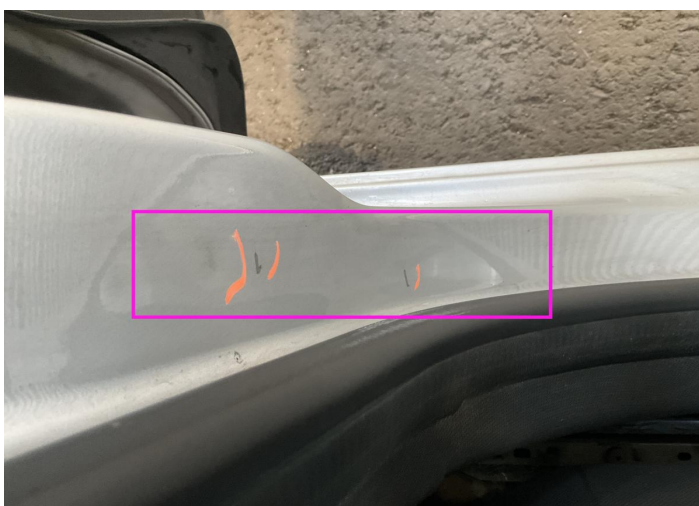
Bodywork / Breakage / Crack



1. Rim / Front Right
Out of Bodywork / Scratch -



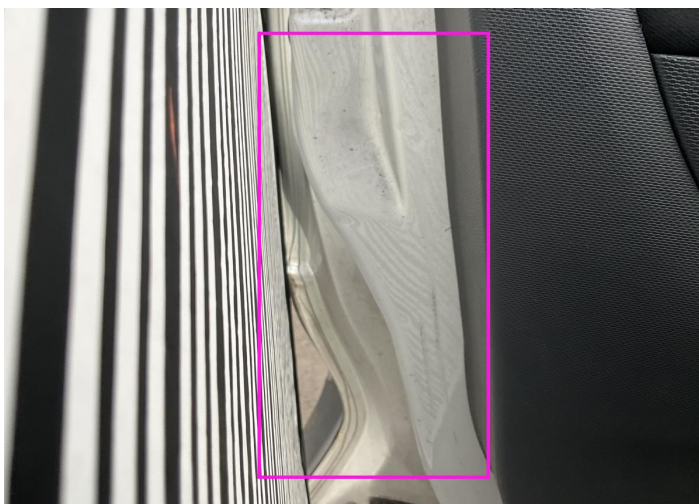
2. Corner Bumper / Front Right
Paint / Scratch / Scuff -



3. Rocker Panel / Center Left
Bodywork / Dent / Dent -



4. B Pillar / Center Left
Bodywork / Dent / Dent -



5. Door / Front Left
Bodywork / Dent / Dent -



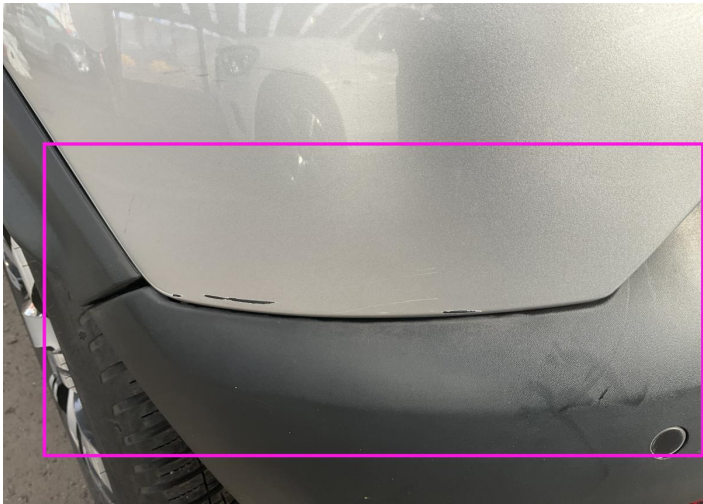
6. Rocker Panel / Center Left
Bodywork / Dent / Dent -



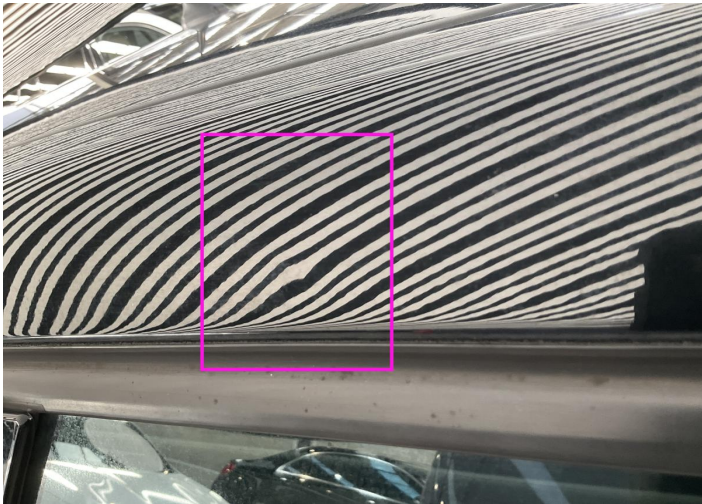
7. Panel Filling / Back Left
Interior / Scratched -



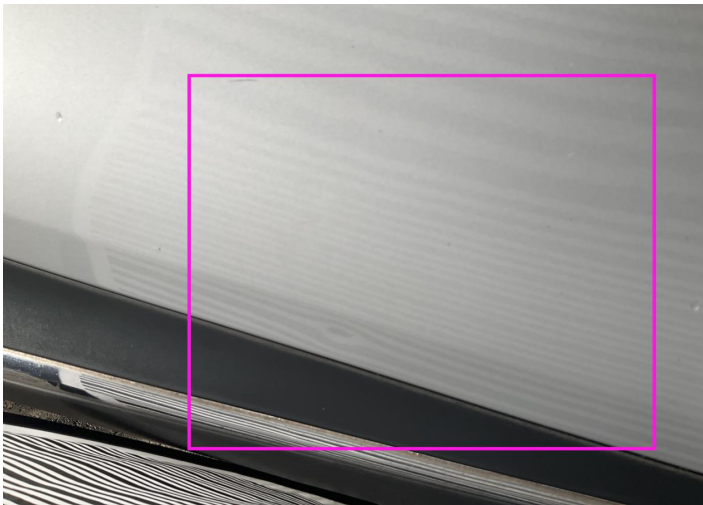
8. Backrest Cover / Front Left
Interior / Scratched -



9. Corner Bumper / Back Left
Bodywork / Breakage / Crack -



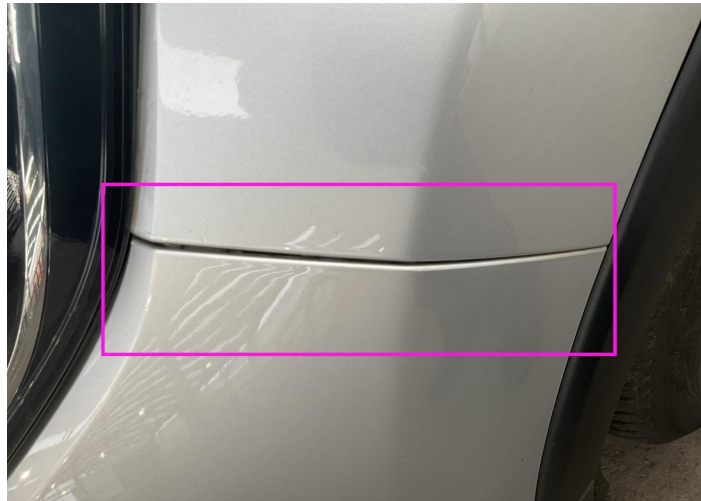
10. Roof
Bodywork / Dent / Dent -



11. Door / Front Right
Bodywork / Dent / Dent -



12. Rim / Back Left
Out of Bodywork / Scratch -



13. Corner Bumper / Front Left
Bodywork / Breakage / Crack -

Mechanical Condition

Control Lights

Display Defect	✓	ABS Warning Light	✓
ESP Fault/Traction Control Malfunction Light	✓	Airbag Warning Light	✓
Oil Pressure Warning Light	✓	Brake Warning Light	✓
Power Steering Warning Light	✓	Alternator / Battery	✓
No Dashboard Lights	✓	Tire Pressure Monitoring System	✓

Engine

Engine Status / EML	✓	Engine Leak Visible	✓
Engine Starts	✓		

Gearbox

Gear Box	✓
----------	---

Equipments Test

Electric Windows	✓	Navigation System	✓
Audio Equipment	✓	Parking Sensors / Cameras Functioning	✓

Levels

Brakes Fluid	✓	Coolant Fluid	✓
--------------	---	---------------	---

Test Drive Inspection

Steering Wheel

Steering | Noise / Anomaly

Engine

Engine Noise The Gears Scratch / Skip / Abnormal Operation

Fume Quantity Power Loss

Brake

Brake System Anomaly

Clutch

Clutch Functioning

General

Test Driven Status

- No troubles detected, good condition or correct tests, according to vehicle age and mileage
- Damages or malfunction detected that requires repairs by the buyer
- Not applicable
- Not tested

Disclaimer

Please also note the "UserGuide condition report", which shows the scope of the vehicle description. [User Guide](#)