



DACIA DUSTER

Duster 1.5 dCi 110 4x2 Prestige

VIN NO UU1HSDADF51560358
Registration Number DK592TV



MOT Date	Number of Owners	Number of Keys	Odometer Reading
-	-	2	118711 km
Last Service	Last Service Mileage	First Registration Date	Country First Registered
-	-	2014-10-08	-

Inspection Report Summary

Customer	BCAuto Encheres	Report Number	P20250703110737
Inspection Date / Place	2025-07-03 / BCA BETHUNE	Cosmetic Grade	3

Vehicle Summary

Vehicle Condition	Non-Runner	VAT Type	Exempt Rate
Fuel Type	Diesel	Gearbox Type	Manual
Colour	Black	Engine Size (cc)	1461
Engine Size	1.5	No of Doors	5
Body Type	Stationwagon / Estate	Drive Train	Front
Seat Colour		No of Seats	5
Charging Cables		NEDC CO2 Rating (q/km)	127

Vehicle History & Documents

Service Book Available	Present	Next Service Mileage	km
Previous Usage	Normal Use	Imported	No
Manufacturer Warrenty			



Equipment

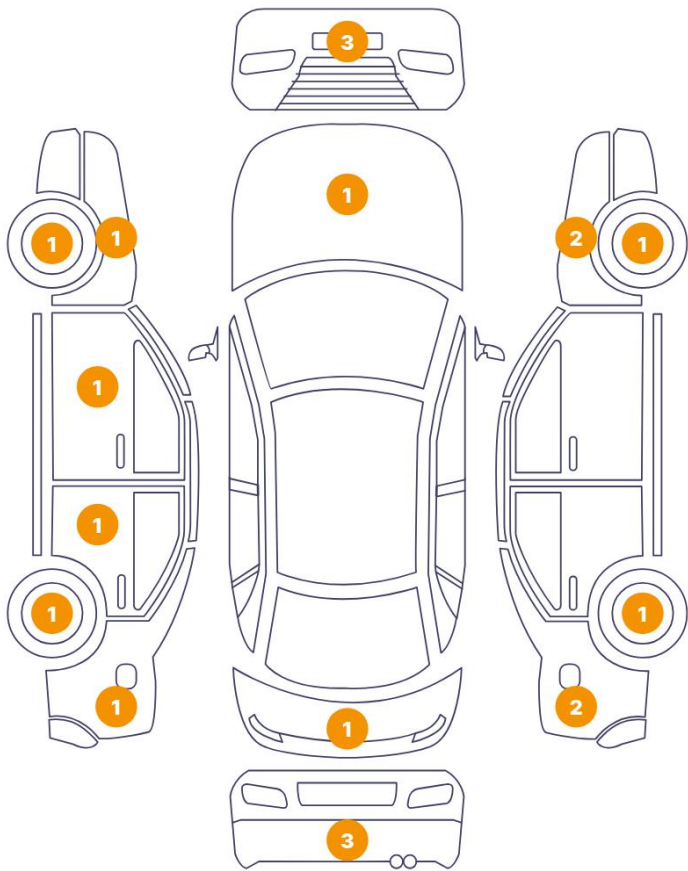
Central locking	Rear parking sensors	Cruise control	Power assisted steering
Satellite navigation	Radio	Alloys wheels	Front fog lamps
Roof rails			

Equipment Details

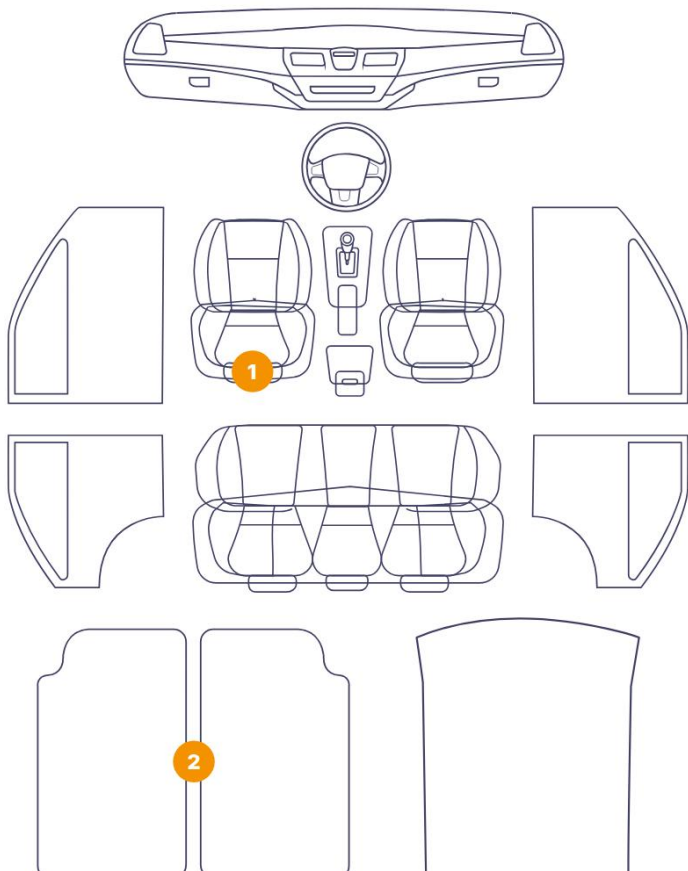
Seat Heating	No	Air Conditioning	Yes
Sunroof Type	Tilt/Slide Steel		

Cosmetic Damage

20 Dommages



3 Dommages



Component		Damage	Comments
1	Floor Carpet	Interior / Holed	
2	Seat Cushion / Front Left	Interior / Holed	
3	Floor Carpet	Interior / Dirty	
4	Hood	Paint / Scratch / Line	
5	Corner Bumper / Front Right	Paint / Scratch / Scuff	
6	Bumper / Front	Paint / Scratch / Scuff	
7	Corner Bumper / Front Left	Paint / Scratch / Scuff	
8	Fender / Front Left	Paint / Scratch / Line	
9	Rim / Front Left	Out of Bodywork / Scratch	
10	Door / Front Left	Paint / Scratch / Line	
11	Door / Back Left	Paint / Scratch / Line	
12	Side Panel / Back Left	Bodywork / Dent / Deformation	
13	Rim / Back Left	Out of Bodywork / Scratch	

14	Corner Bumper / Back Left	Paint / Scratch / Scuff
15	Bumper / Back	Paint / Scratch / Scuff
16	Corner Bumper / Back Right	Paint / Scratch / Scuff
17	Tailgate	Paint / Scratch / Line
18	Side Panel / Back Right	Paint / Scratch / Line
19	Side Panel / Back Right	Bodywork / Dent / Deformation
20	Rim / Back Right	Out of Bodywork / Scratch
21	Fender / Front Right	Paint / Scratch / Line
22	Rim / Front Right	Out of Bodywork / Scratch
23	Fender / Front Right	Paint / Chipping



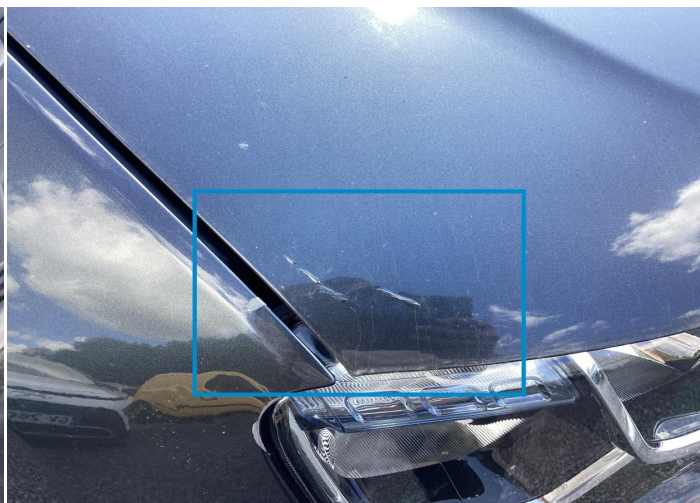
1. Floor Carpet
Interior / Holed -



2. Seat Cushion / Front Left
Interior / Holed -



3. Floor Carpet
Interior / Dirty -



4. Hood
Paint / Scratch / Line -



5. Corner Bumper / Front Right
Paint / Scratch / Scuff -



6. Bumper / Front
Paint / Scratch / Scuff -



7. Corner Bumper / Front Left
Paint / Scratch / Scuff -



8. Fender / Front Left
Paint / Scratch / Line -



9. Rim / Front Left
Out of Bodywork / Scratch -



10. Door / Front Left
Paint / Scratch / Line -



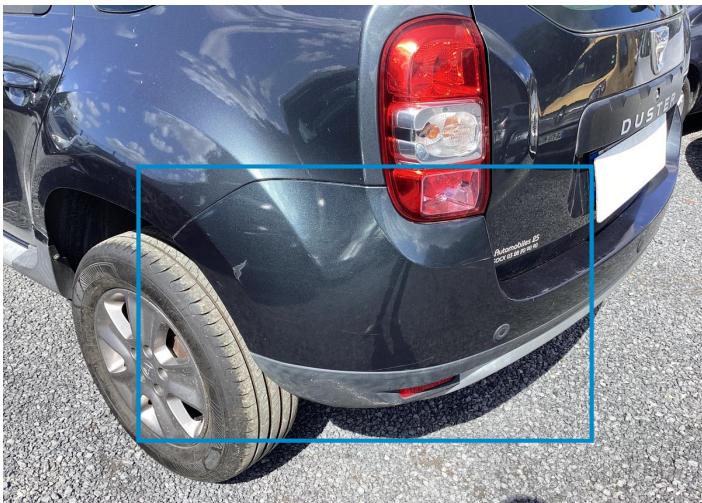
11. Door / Back Left
Paint / Scratch / Line -



12. Side Panel / Back Left
Bodywork / Dent / Deformation -



13. Rim / Back Left
Out of Bodywork / Scratch -



14. Corner Bumper / Back Left
Paint / Scratch / Scuff -



15. Bumper / Back
Paint / Scratch / Scuff -



16. Corner Bumper / Back Right
Paint / Scratch / Scuff -



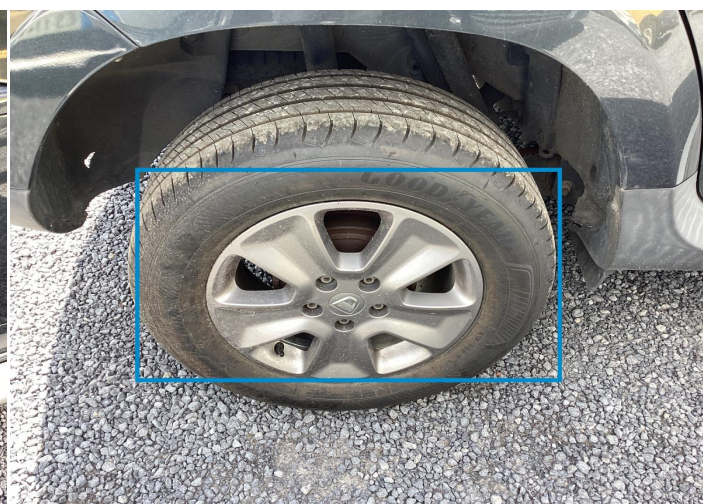
17. Tailgate
Paint / Scratch / Line -



18. Side Panel / Back Right
Paint / Scratch / Line -



19. Side Panel / Back Right
Bodywork / Dent / Deformation -



20. Rim / Back Right
Out of Bodywork / Scratch -



21. Fender / Front Right
Paint / Scratch / Line -



22. Rim / Front Right
Out of Bodywork / Scratch -



23. Fender / Front Right
Paint / Chipping -

Mechanical Condition

Tyres

Presence Anti-Theft Lock Nut 

 *No troubles detected, good condition or correct tests, according to vehicle age and mileage*

 *Damages or malfunction detected that requires repairs by the buyer*

 *Not applicable*

 *Not tested*

Disclaimer Section

The test drive is done on a flat surface and lasts about 2 minutes. The driven distance is a minimum of 300 meters, including a u-turn, an acceleration and a braking phase. The highest speed achieved during this test is 50km/h. The mechanical check is a visual and dynamic diagnosis without any disassembly. We cannot guarantee any mechanical wear part.