



DACIA Sandero

Sandero Stepway TCe 90 (S&S)

VIN NO UU1B5220362605550
Registration Number 0362605550



MOT Date	Number of Owners	Number of Keys	Odometer Reading
-	-	2	17976 km
Last Service	Last Service Mileage	First Registration Date	Country First Registered
2025-04-07	16980	2019-04-10	-

Inspection Report Summary

Customer	BCA Online	Report Number	P20251001112640
Inspection Date / Place	2025-10-01 / Extern	Cosmetic Grade	2

Vehicle Summary

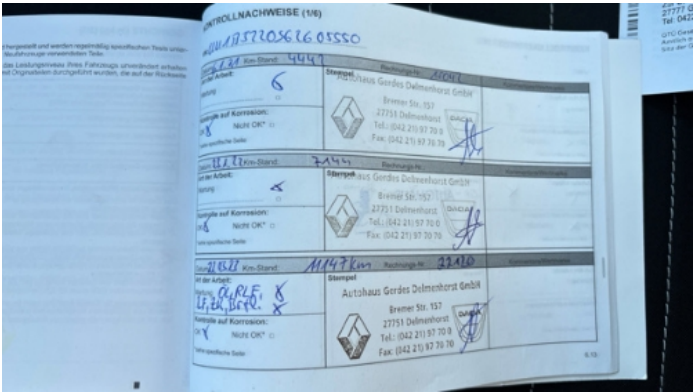
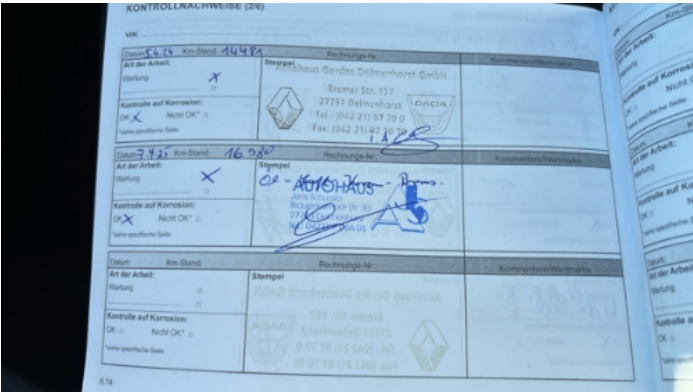
Vehicle Condition	Runner	VAT Type	Margin
Fuel Type	Petrol	Road Worthy	Yes
Colour	Blue	Engine Size (cc)	898
Engine Size	0.9	No of Doors	5
Body Type	Sedan	Drive Train	Front
Seat Colour		No of Seats	5
Seat Covering Name	Schwarz	Seat Covering	Cloth
Charging Cables		NEDC CO2 Rating (q/km)	115
Gearbox Type	Manual		

Vehicle History & Documents

Service Book Available	Present	Next Service Mileage	km
Previous Usage		Imported	Yes
Manufacturer Warrenty			







Equipment

Trip Computer	Anti-lock braking	Cruise control	Remote central locking
Satellite navigation	Leather steering wheel	Rear parking sensors	Airbag Status
Bluetooth telephone interface	Remote adjusting wing mirrors	Roof rails	Stability control
Radio			

Equipment Details

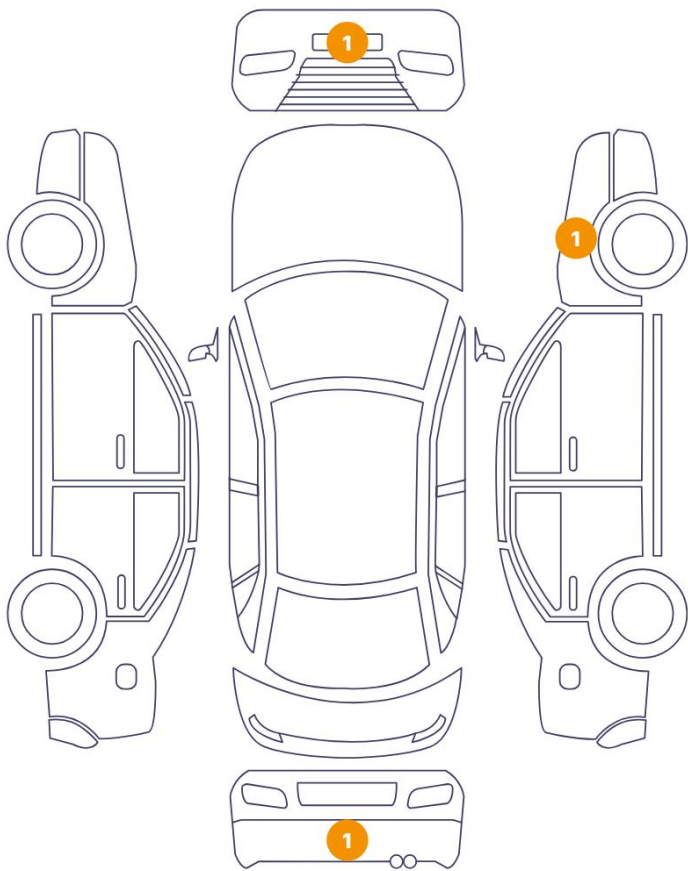
Air Conditioning	Yes	Seat Heating	No
------------------	-----	--------------	----

Wheels & Tyres

Left Front Tyre Depth	3	Right Rear Tyre Depth	5
Left Rear Tyre Depth	5	Right Front Tyre Depth	3

Cosmetic Damage

3 Schäden



0 Schäden



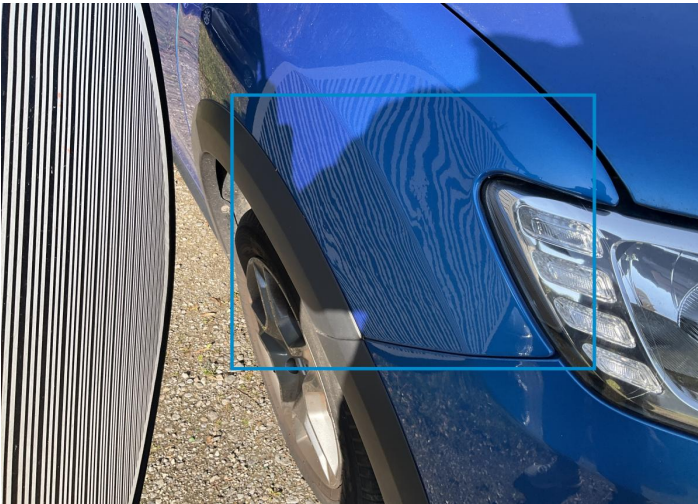
Component		Damage	Comments
1	Bumper / Front	Paint / Scratch / Scuff	
2	Bumper / Back	Paint / Scratch / Scuff	
3	Fender / Front Right	Bodywork / Dent / Dent	



1. Bumper / Front
Paint / Scratch / Scuff -



2. Bumper / Back
Paint / Scratch / Scuff -



3. Fender / Front Right
Bodywork / Dent / Dent -

Mechanical Condition

Equipments Test

Central Locking	✓	Electric Windows	✓
Navigation System	✓	Audio Equipment	✓
AC / Heating System	✓	Main & Spare Keys Functioning	✓
Parking Sensors / Cameras Functioning	✓	Other Equipments	✓

Control Lights

ABS Warning Light	✓	ESP Fault/Traction Control Malfunction Light	✓
Airbag Warning Light	✓	Oil Pressure Warning Light	✓
Brake Warning Light	✓	Power Steering Warning Light	✓
Alternator / Battery	✓	No Dashboard Lights	✓
Service Light	✓	Tire Pressure Monitoring System	✓
Display Defect	✓		

Engine

Engine Status / EML	✓	Engine Leak Visible	✓
Engine Starts	✓		

Gearbox

Gear Box	✓
----------	---

Levels

Brakes Fluid	✓	Coolant Fluid	✓
--------------	---	---------------	---

Test Drive Inspection

Steering Wheel

Steering | Noise / Anomaly ✓

Engine

Engine Noise ✓ The Gears Scratch / Skip / Abnormal Operation ✓

Fume Quantity ✓ Power Loss ✓

Brake

Brake System Anomaly ✓

Clutch

Clutch Functioning ✓

General

Test Driven Status NA

- ✓ No troubles detected, good condition or correct tests, according to vehicle age and mileage
- ! Damages or malfunction detected that requires repairs by the buyer
- NA Not applicable
- ☐ Not tested

Disclaimer

Please also note the "UserGuide condition report", which shows the scope of the vehicle description. [User Guide](#)