



SUZUKI Swace

Swace 1.8 Hybrid CVT

VIN NO TSMZ93BE00E332452
Registration Number E00E332452



MOT Date

2025-03-01

Last Service



Number of Owners

2

Last Service Mileage



Number of Keys

1

First Registration Date

2023-08-22

Odometer Reading

77301 km

Country First Registered

Germany

Inspection Report Summary

Customer	BCA Online	Report Number	P20250926095446
Inspection Date / Place	2025-09-26 / BCA Berlin	Cosmetic Grade	4

Vehicle Summary

Vehicle Condition	Runner	VAT Type	Margin
Fuel Type	Hybrid Electric Vehicle Petrol	Road Worthy	Unknown
Colour	Brown	Engine Size (cc)	1798
Engine Size	1.8	No of Doors	5
Body Type	Stationwagon / Estate	Drive Train	Front
Seat Colour		No of Seats	5
Seat Covering Name	Schwarz	Seat Covering	Cloth
Charging Cables		NEDC CO2 Rating (q/km)	78
Gearbox Type	Automatic		

Vehicle History & Documents

Service Book Available	Present	Next Service Mileage	km
Previous Usage		Imported	No
Manufacturer Warrenty			







Equipment

Tinted Glass	Alloys wheels	Cruise control	Front fog lamps
Remote adjusting wing mirrors	Reversing Camera	Stability control	Radio
Airbag Status	Anti-lock braking	Digitaldashboard	Front parking sensors
Remote central locking	Roof rails	LED Headlamps	Rear parking sensors

Equipment Details

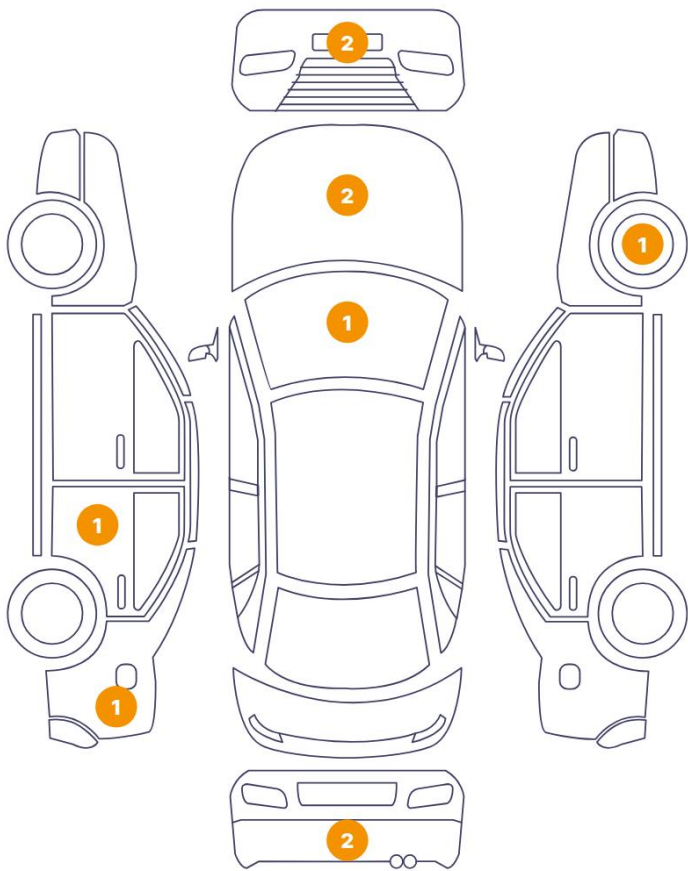
Air Conditioning	Dual Zone Climate Control	Alloy Wheel Size	16
Seat Heating	Front		

Wheels & Tyres

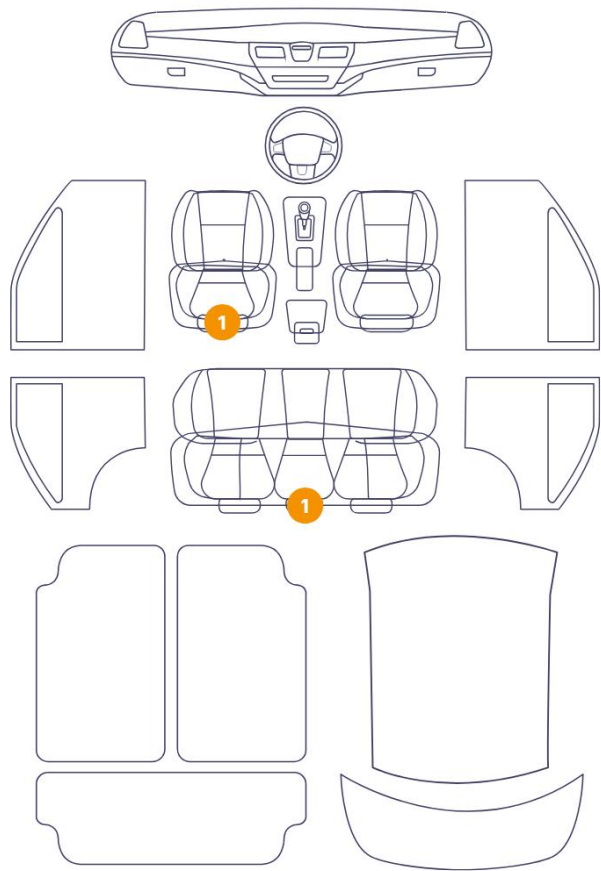
Right Front Tyre Depth	3	Left Front Tyre Depth	3
Right Rear Tyre Depth	5	Left Rear Tyre Depth	5

Cosmetic Damage

10 Schäden



2 Schäden



Component		Damage	Comments
1	Bumper / Back	Paint / Scratch / Scuff	
2	Bumper / Back	Paint / Scratch / Scuff	
3	Rim / Front Right	Out of Bodywork / Scratch	
4	Bumper / Front	Bodywork / Breakage / Crack	
5	Bumper / Front	Paint / Scratch / Scuff	
6	Hood	Paint / Scratch / Scuff	
7	Windshield / Front	Paint / Chipping	
8	Door / Back Left	Paint / Scratch / Scuff	
9	Hood	Bodywork / Dent / Dent	
10	Side Panel / Back Left	Paint / Scratch / Scuff	
11	Seat / Back Center	Interior / Dirty	
12	Seat / Front Left	Interior / Dirty	



1. Bumper / Back
Paint / Scratch / Scuff -



2. Bumper / Back
Paint / Scratch / Scuff -



3. Rim / Front Right
Out of Bodywork / Scratch -



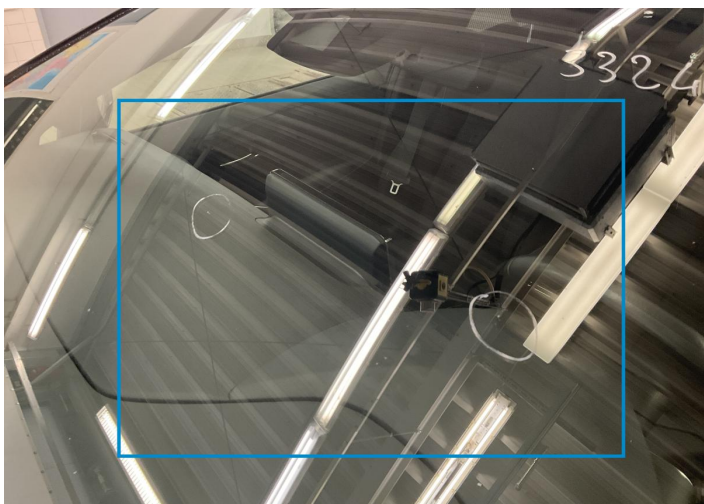
4. Bumper / Front
Bodywork / Breakage / Crack -



5. Bumper / Front
Paint / Scratch / Scuff -



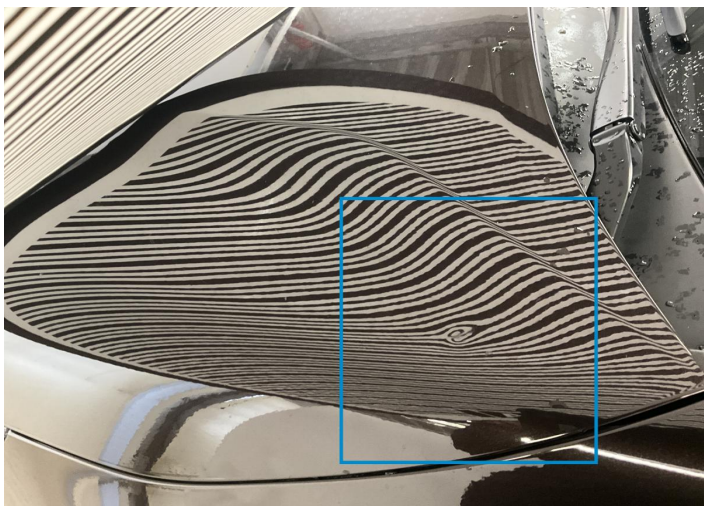
6. Hood
Paint / Scratch / Scuff -



7. Windshield / Front
Paint / Chipping -



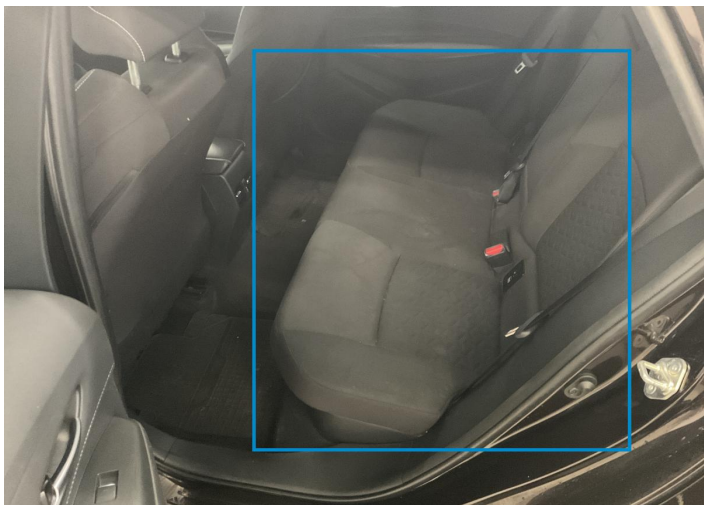
8. Door / Back Left
Paint / Scratch / Scuff -



9. Hood
Bodywork / Dent / Dent -



10. Side Panel / Back Left
Paint / Scratch / Scuff -



11. Seat / Back Center
Interior / Dirty -



12. Seat / Front Left
Interior / Dirty -

Mechanical Condition

Control Lights

Display Defect	✓	ABS Warning Light	✓
ESP Fault/Traction Control Malfunction Light	✓	Airbag Warning Light	✓
Oil Pressure Warning Light	✓	Brake Warning Light	✓
Power Steering Warning Light	✓	Alternator / Battery	✓
No Dashboard Lights	!	Tire Pressure Monitoring System	!

Equipments Test

Main & Spare Keys Functioning	✓	Electric Windows	✓
Audio Equipment	✓	Parking Sensors / Cameras Functioning	✓
AC / Heating System	✓	Other Equipments	✓

Engine

Engine Status / EML	✓	Engine Leak Visible	✓
Engine Starts	✓		

Levels

Brakes Fluid	✓	Coolant Fluid	✓
--------------	---	---------------	---

Hybrid/EV

Hybrid System Fault	✓
---------------------	---

Test Drive Inspection

Steering Wheel			
Steering Noise / Anomaly		✓	
Engine			
Engine Noise	✓	The Gears Scratch / Skip / Abnormal Operation	✓
Fume Quantity	✓	Power Loss	✓
Brake			
Brake System Anomaly		✓	
General			
Test Driven Status		✓	
✓ <i>No troubles detected, good condition or correct tests, according to vehicle age and mileage</i>			
! <i>Damages or malfunction detected that requires repairs by the buyer</i>			
NA <i>Not applicable</i>			
= <i>Not tested</i>			

Disclaimer

Please also note the "UserGuide condition report", which shows the scope of the vehicle description.

[User Guide](#)