



# SUZUKI Ignis

## Ignis 1.3

VIN NO TSMMHX51S00194893

Registration Number 1S00194893



MOT Date

2025-04-01

Last Service

2023-04-11

Number of Owners

3

Last Service Mileage

129457

Number of Keys

2

First Registration Date

2005-02-24

Odometer Reading

173030 km

Country First Registered

Germany

### Inspection Report Summary

Customer	BCA Online	Report Number	P20250912102328
Inspection Date / Place	2025-09-12 / BCA Berlin	Cosmetic Grade	4

### Vehicle Summary

Vehicle Condition	Runner	VAT Type	Margin
Fuel Type	Petrol	Road Worthy	Unknown
Colour	Red	Engine Size (cc)	1328
Engine Size	1.3	No of Doors	5
Body Type	SUV	Drive Train	Front
Seat Colour		No of Seats	5
Seat Covering Name	schwarz	Seat Covering	Cloth
Charging Cables		NEDC CO2 Rating (q/km)	154
Gearbox Type	Manual		

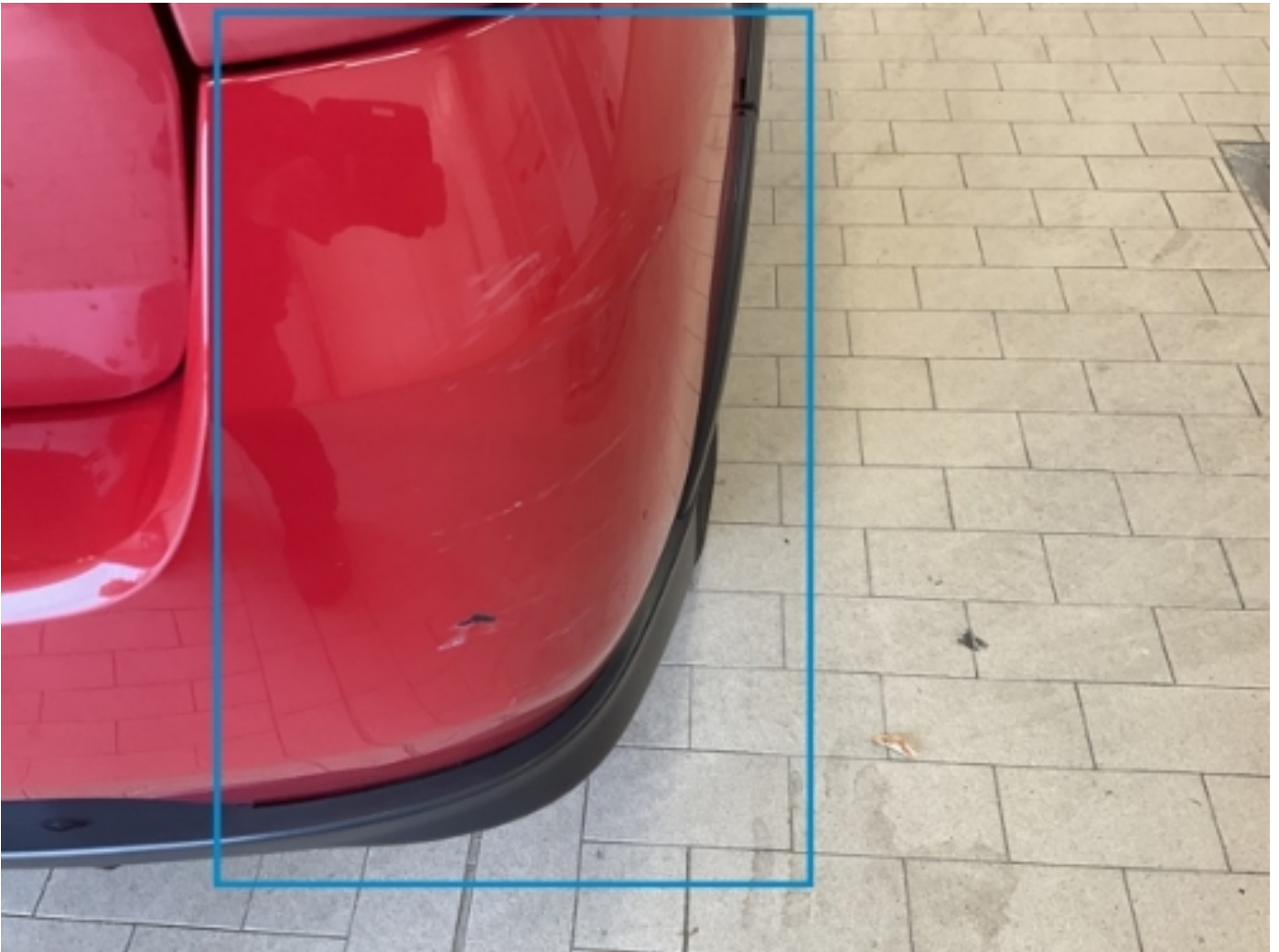
### Vehicle History & Documents

Service Book Available	Present	Next Service Mileage	km
Previous Usage		Imported	No
Manufacturer Warrenty			









Equipment

Airbag Status	Remote adjusting wing mirrors	CD Player	Anti-lock braking
Remote central locking	Radio		

Equipment Details

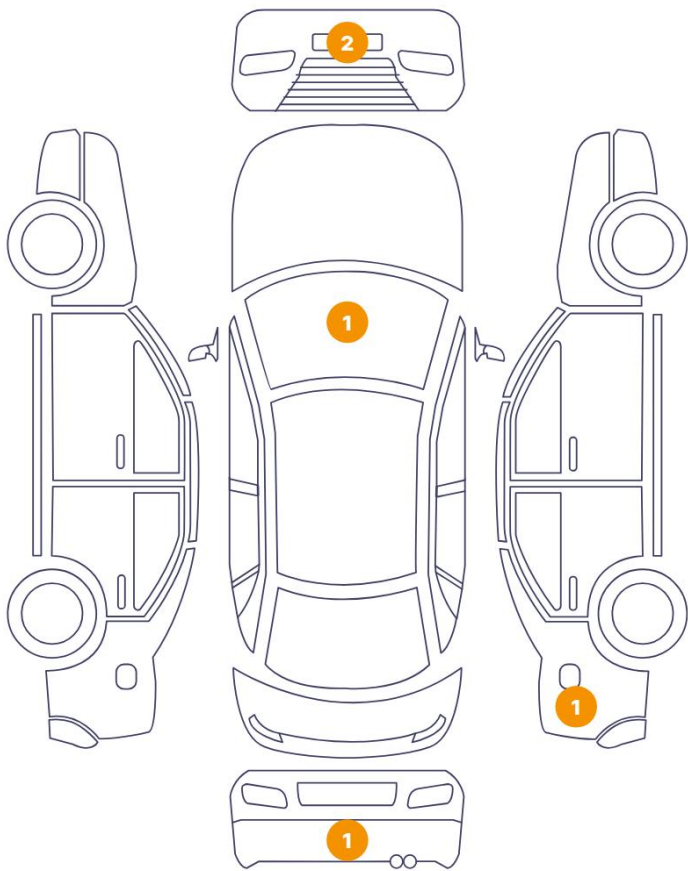
Air Conditioning	Yes
------------------	-----

Wheels & Tyres

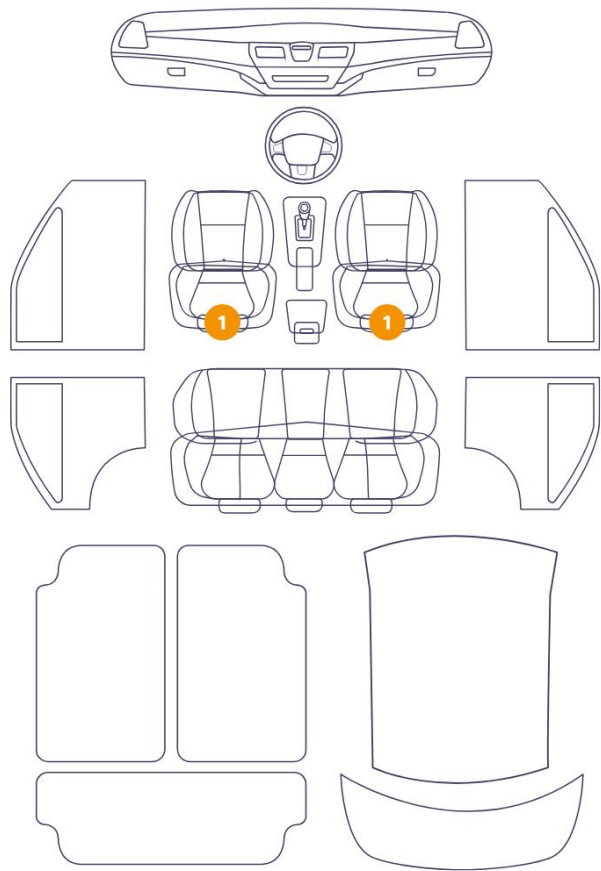
Right Front Tyre Depth	5	Left Front Tyre Depth	5
Right Rear Tyre Depth	4	Left Rear Tyre Depth	5

Cosmetic Damage

5 Schäden

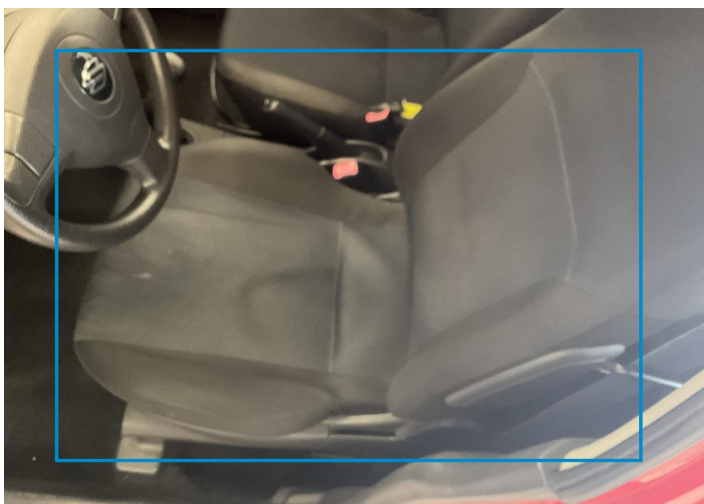


2 Schäden



Component		Damage	Comments
1	Seat / Front Left	Interior / Dirty	
2	Seat / Front Right	Interior / Dirty	
3	Shutter Cap / Front	Missing Part	
4	Windshield / Front	Paint / Chipping	
5	Bumper / Front	Bodywork / Breakage / Crack	
6	Side Panel / Back Right	Bodywork / Dent / Dent	
7	Bumper / Back	Paint / Scratch / Scuff	





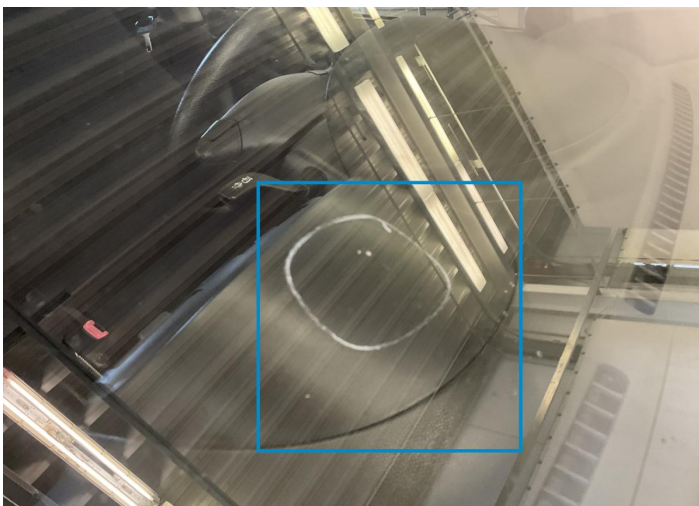
1. Seat / Front Left  
Interior / Dirty -



2. Seat / Front Right  
Interior / Dirty -



3. Shutter Cap / Front  
Missing Part -



4. Windshield / Front  
Paint / Chipping -



5. Bumper / Front  
Bodywork / Breakage / Crack -



6. Side Panel / Back Right  
Bodywork / Dent / Dent -



7. Bumper / Back  
Paint / Scratch / Scuff -



## Mechanical Condition

### Control Lights

Display Defect	✓	ABS Warning Light	✓
Airbag Warning Light	✓	Oil Pressure Warning Light	✓
Alternator / Battery	✓	No Dashboard Lights	✓

### Equipments Test

Main & Spare Keys Functioning	✓	Electric Windows	✓
Audio Equipment	!	AC / Heating System	✓
Other Equipments	✓		

### Engine

Engine Status / EML	✓	Engine Leak Visible	✓
Engine Starts	✓		

### Levels

Brakes Fluid	✓	Coolant Fluid	✓
--------------	---	---------------	---

## Test Drive Inspection

### Steering Wheel

Steering | Noise / Anomaly !

### Engine

Engine Noise	✓	The Gears Scratch / Skip / Abnormal Operation	✓
Fume Quantity	✓	Power Loss	✓

### Brake

Brake System Anomaly ✓

### Clutch

Clutch Functioning ✓


### General

Test Driven Status ✓

✓ *No troubles detected, good condition or correct tests, according to vehicle age and mileage*

 *Damages or malfunction detected that requires repairs by the buyer*

 *Not applicable*

 *Not tested*

## Disclaimer

---

*Please also note the "UserGuide condition report", which shows the scope of the vehicle description.*

[User Guide](#)