



# AUDI Audi TT

## TT Roadster 1.8 TFSI

VIN NO TRUZZZFV7H1019872  
 Registration Number V7H1019872



MOT Date

2026-10-01

Last Service

2025-02-11

Number of Owners

2

Last Service Mileage

61310

Number of Keys

2

First Registration Date

2017-04-27

Odometer Reading

66678 km

Country First Registered

Germany

### Inspection Report Summary

Customer	BCA Online	Report Number	P20250926130906
Inspection Date / Place	2025-09-26 / BCA Neuss	Cosmetic Grade	1

### Vehicle Summary

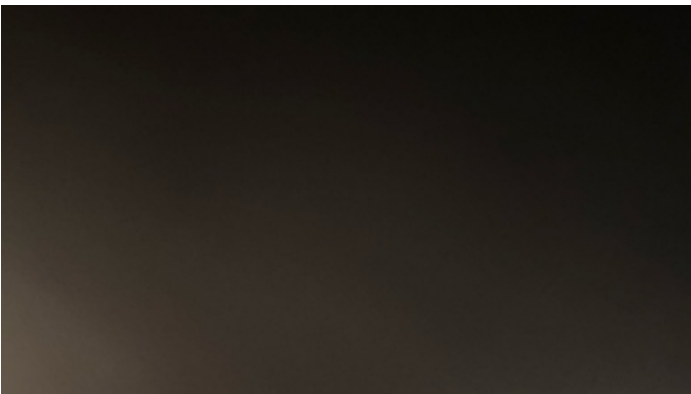
Vehicle Condition	Runner	VAT Type	Margin
Fuel Type	Petrol	Road Worthy	Yes
Colour	White	Engine Size (cc)	1798
Engine Size	1.8	No of Doors	2
Body Type	Roadster	Drive Train	Front
Seat Colour		No of Seats	4
Seat Covering Name	schwarz	Seat Covering	Cloth
Charging Cables		NEDC CO2 Rating (q/km)	138
Gearbox Type	Manual		

### Vehicle History & Documents

Service Book Available	Computer Print Out Available	Next Service Mileage	km
Previous Usage		Imported	No
Manufacturer Warranty			











## Equipment

---

Airbag Status	Anti-lock braking	Bluetooth telephone interface	Digitaldashboard
Remote adjusting wing mirrors	Satellite navigation	Electrically folding wing mirrors	Radio
Alloys wheels	Bi Xenon Headlamps	Cruise control	Heated wing mirrors
Remote central locking	Stability control	Leather steering wheel	Rear parking sensors

## Equipment Details

---

Air Conditioning	Climate Control	Alloy Wheel Size	18
Seat Heating	Front		

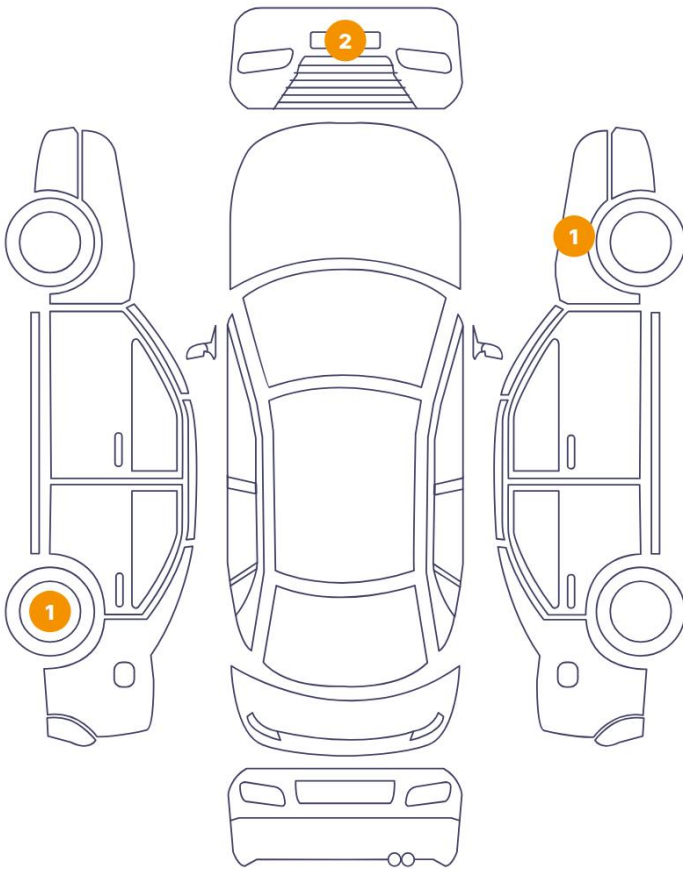
## Wheels & Tyres

---

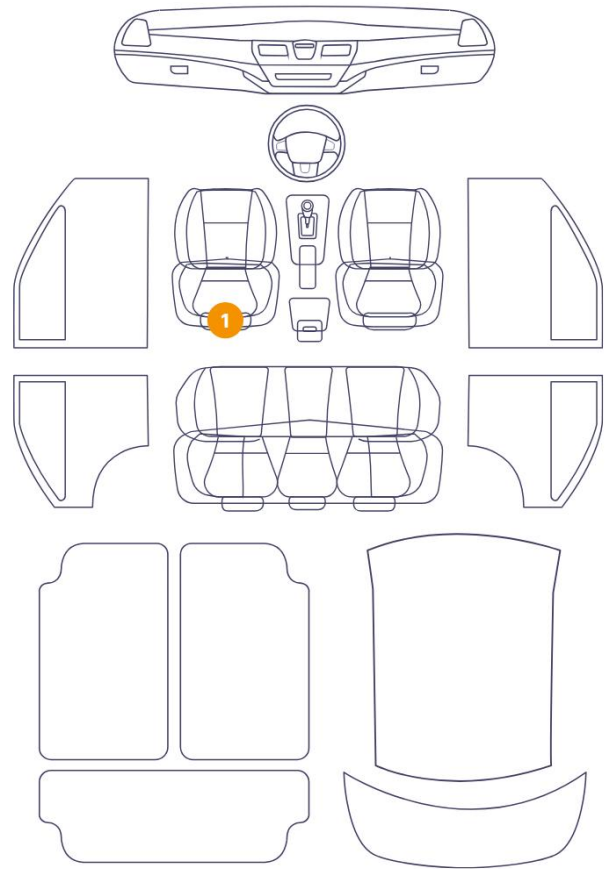
Right Front Tyre Depth	5	Left Front Tyre Depth	5
Right Rear Tyre Depth	5	Left Rear Tyre Depth	5

## Cosmetic Damage

4 Schäden



1 Schäden



Component	Damage	Comments
1 Rim / Back Left	Out of Bodywork / Scratch	
2 Bumper / Front	Paint / Scratch / Scuff	
3 Bumper / Front	Paint / Scratch / Scuff	
4 Fender / Front Right	Bodywork / Dent / Dent	
5 Seat / Front Left	Interior / Ripped	

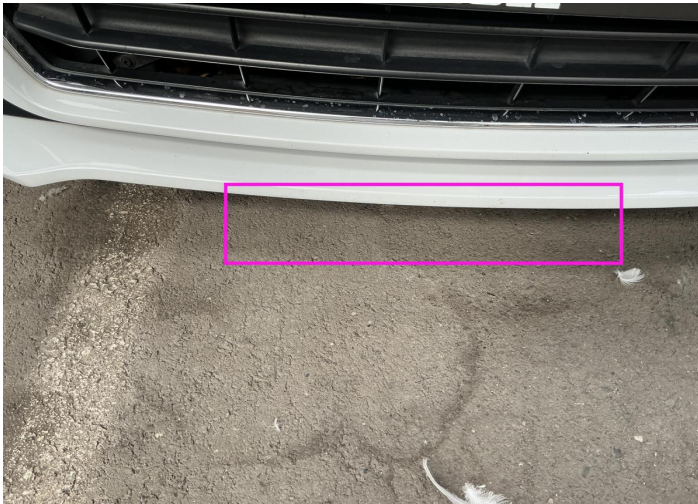




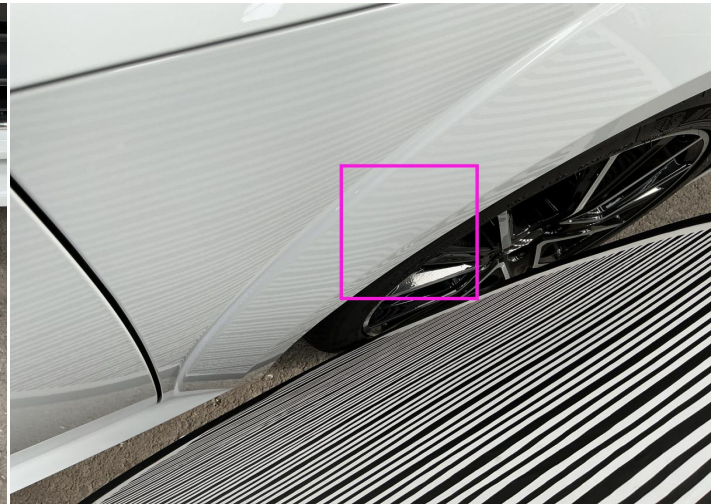
1. Rim / Back Left  
Out of Bodywork / Scratch -



2. Bumper / Front  
Paint / Scratch / Scuff -



3. Bumper / Front  
Paint / Scratch / Scuff -



4. Fender / Front Right  
Bodywork / Dent / Dent -



5. Seat / Front Left  
Interior / Ripped -

## Mechanical Condition

### Control Lights

ABS Warning Light	✓	ESP Fault/Traction Control Malfunction Light	✓
Airbag Warning Light	✓	Oil Pressure Warning Light	✓
Brake Warning Light	✓	Power Steering Warning Light	✓
Alternator / Battery	✓	No Dashboard Lights	✓
Display Defect	✓	Service Light	✓
Tire Pressure Monitoring System	✓		

### Engine

Engine Status / EML	✓	Engine Leak Visible	✓
Engine Starts	✓		

### Gearbox

Gear Box	✓
----------	---

### Equipments Test

Electric Windows	✓	Navigation System	✓
AC / Heating System	✓	Main & Spare Keys Functioning	✓
Parking Sensors / Cameras Functioning	✓		

### Levels

Brakes Fluid	✓	Coolant Fluid	✓
--------------	---	---------------	---




## Test Drive Inspection

---

### Steering Wheel


Steering | Noise / Anomaly 

### Engine


Engine Noise  The Gears Scratch / Skip / Abnormal Operation 

Fume Quantity  Power Loss 


### Brake

Brake System Anomaly 

### Clutch

Clutch Functioning 


### General

Test Driven Status 

 **No troubles detected, good condition or correct tests, according to vehicle age and mileage**

 **Damages or malfunction detected that requires repairs by the buyer**

 **Not applicable**

 **Not tested**

## Disclaimer

---

Please also note the "UserGuide condition report", which shows the scope of the vehicle description.

[User Guide](#)