



SKODA Citigo

Citigo 1.0 MPI Green tec

VIN NO TMBZZZAAZDD621475

Registration Number AZDD621475



MOT Date



Last Service

2023-09-27

Number of Owners



1

Last Service Mileage

107704

Number of Keys



2

First Registration Date

2012-11-07

Odometer Reading



126024 km

Country First Registered



-

Inspection Report Summary

Customer	BCA Online	Report Number	P20250908094927
Inspection Date / Place	2025-09-08 / Dello Eppendorf/Hamburg	Cosmetic Grade	3

Vehicle Summary

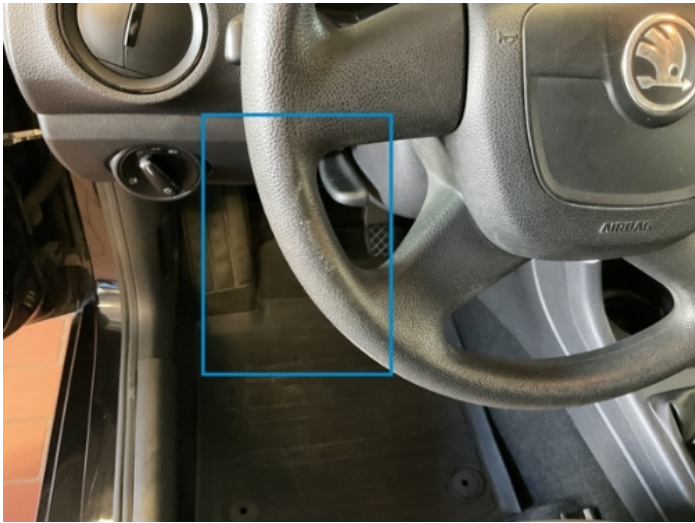
Vehicle Condition	Runner	VAT Type	Margin
Fuel Type	Petrol	Road Worthy	Yes
Colour	Black	Engine Size (cc)	999
Engine Size	1.0	No of Doors	3
Body Type	Sedan	Drive Train	Front
Seat Colour		No of Seats	4
Seat Covering Name	Grau	Seat Covering	Cloth
Charging Cables		NEDC CO2 Rating (q/km)	98
Gearbox Type	Manual		

Vehicle History & Documents

Service Book Available	Incomplete	Next Service Mileage	km
Previous Usage		Imported	No
Manufacturer Warrenty			







Equipment

Trip Computer	Anti-lock braking	Heated wing mirrors	Remote central locking
Split folding rear seats	CD Player	Airbag Status	Auxiliary Socket
Remote adjusting wing mirrors	Satellite navigation	Stability control	Radio

Equipment Details

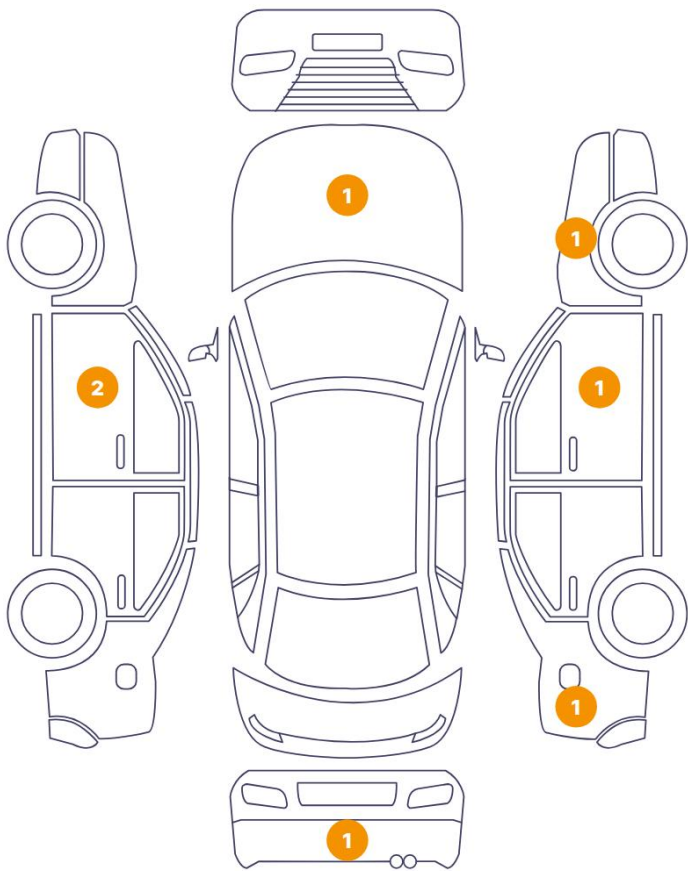
Seat Heating	Front
--------------	-------

Wheels & Tyres

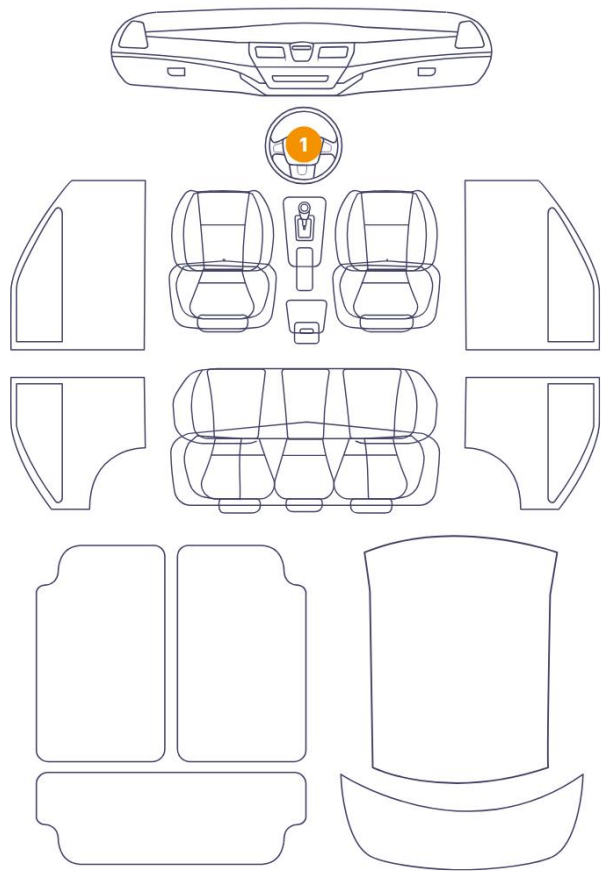
Right Front Tyre Depth	3	Left Front Tyre Depth	3
Right Rear Tyre Depth	4	Left Rear Tyre Depth	4

Cosmetic Damage

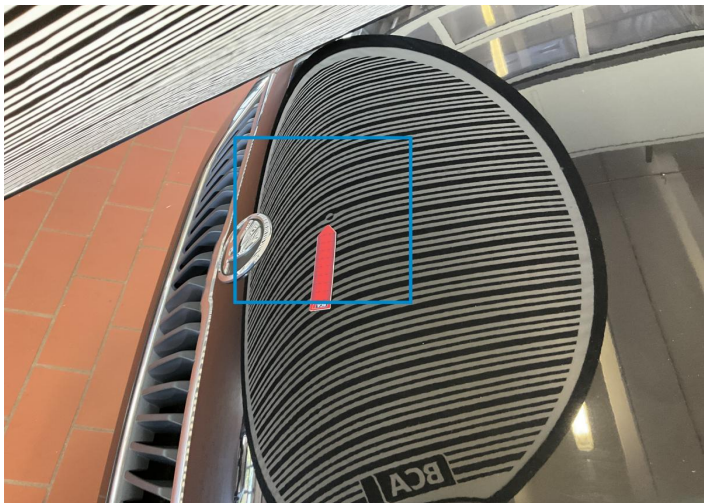
7 Schäden



1 Schäden



Component		Damage	Comments
1	Hood	Bodywork / Dent / Dent	
2	Door / Front Left	Bodywork / Dent / Dent	
3	Door / Front Left	Bodywork / Dent / Dent	
4	Bumper / Back	Paint / Scratch / Scuff	
5	Fender / Back Right	Paint / Corrosion	
6	Door / Front Right	Paint / Scratch / Scuff	
7	Fender / Front Right	Bodywork / Dent / Deformation	
8	Steering Wheel / Front	Interior / Scraped	



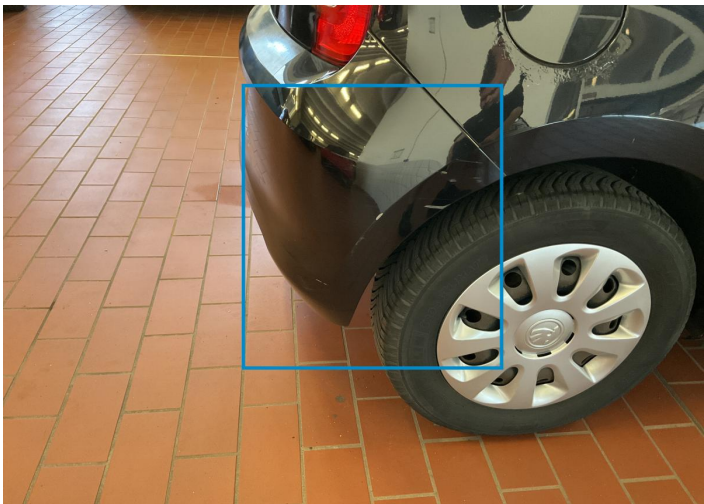
1. Hood
Bodywork / Dent / Dent -



2. Door / Front Left
Bodywork / Dent / Dent -



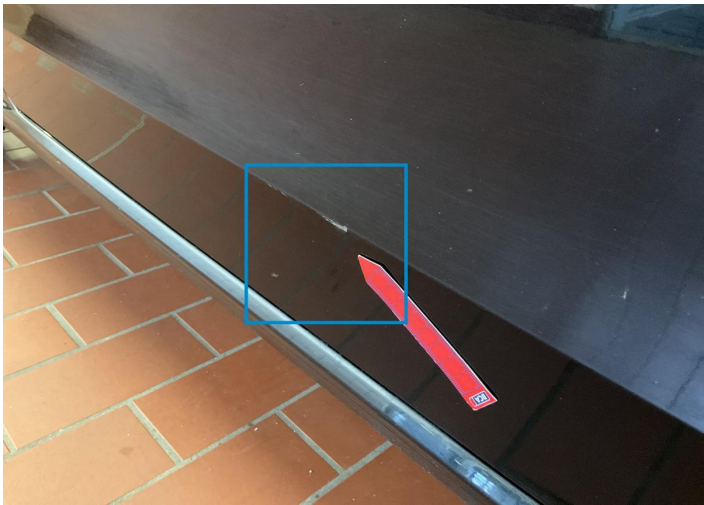
3. Door / Front Left
Bodywork / Dent / Dent -



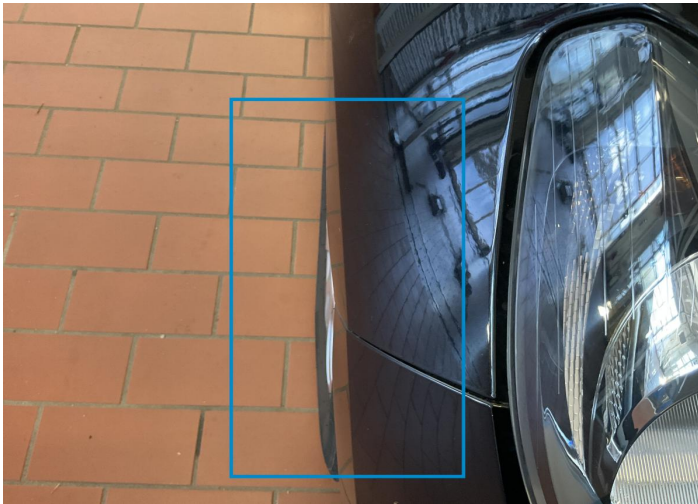
4. Bumper / Back
Paint / Scratch / Scuff -



5. Fender / Back Right
Paint / Corrosion -



6. Door / Front Right
Paint / Scratch / Scuff -



7. Fender / Front Right
Bodywork / Dent / Deformation -



8. Steering Wheel / Front
Interior / Scraped -

Mechanical Condition

Control Lights

Display Defect	✓	Service Light	✓
ABS Warning Light	✓	ESP Fault/Traction Control Malfunction Light	✓
Airbag Warning Light	✓	Oil Pressure Warning Light	✓
Brake Warning Light	✓	Power Steering Warning Light	✓
Alternator / Battery	✓	No Dashboard Lights	✓
Tire Pressure Monitoring System	✓		

Equipments Test

Central Locking	✓	Main & Spare Keys Functioning	✓
Electric Windows	✓	Audio Equipment	✓
AC / Heating System	✓	Other Equipments	✓

Engine

Engine Status / EML	✓	Engine Leak Visible	✓
Engine Starts	✓		

Gearbox

Gear Box	⚠
----------	---

Levels

Brakes Fluid	✓	Coolant Fluid	✓
--------------	---	---------------	---

Test Drive Inspection

Steering Wheel			
Steering Noise / Anomaly		✓	
Engine			
Engine Noise	✓	The Gears Scratch / Skip / Abnormal Operation	✓
Fume Quantity	✓	Power Loss	✓
Clutch			
Clutch Functioning		✓	
Brake			
Brake System Anomaly		✓	
General			
Test Driven Status		✓	
✓ <i>No troubles detected, good condition or correct tests, according to vehicle age and mileage</i>			
! <i>Damages or malfunction detected that requires repairs by the buyer</i>			
NA <i>Not applicable</i>			
= <i>Not tested</i>			

Disclaimer

Please also note the "UserGuide condition report", which shows the scope of the vehicle description.

[User Guide](#)