



# SKODA Roomster

## Roomster 1.6 TDI DPF

VIN NO TMBNJ25J0C7011348  
Registration Number J0C7011348



MOT Date



Last Service



Number of Owners



Last Service Mileage



Number of Keys



First Registration Date



Odometer Reading



Country First Registered



### Inspection Report Summary

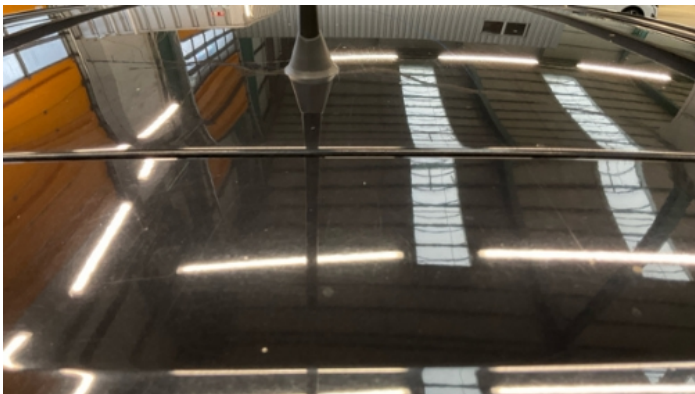
Customer	BCA Online	Report Number	P20251007090007
Inspection Date / Place	2025-10-07 / ARS Altmann AG Riedstadt	Cosmetic Grade	3

### Vehicle Summary

Vehicle Condition	Runner	VAT Type	Margin
Fuel Type	Diesel	Road Worthy	Yes
Colour	Black	Engine Size (cc)	1598
Engine Size	1.6	No of Doors	5
Body Type	Stationwagon / Estate	Drive Train	Front
Seat Colour		No of Seats	5
Seat Covering Name	Schwarz	Seat Covering	Cloth
Charging Cables		NEDC CO2 Rating (q/km)	124
Gearbox Type	Manual		

### Vehicle History & Documents

Service Book Available	Missing	Next Service Mileage	km
Previous Usage		Imported	No
Manufacturer Warrenty			









Equipment

Tinted Glass	Airbag Status	Anti-lock braking	Diesel particulate filter
Remote central locking	Stability control	Radio	Trip Computer
Alloys wheels	Auxiliary Socket	Front fog lamps	Roof rails
CD Player			

Equipment Details

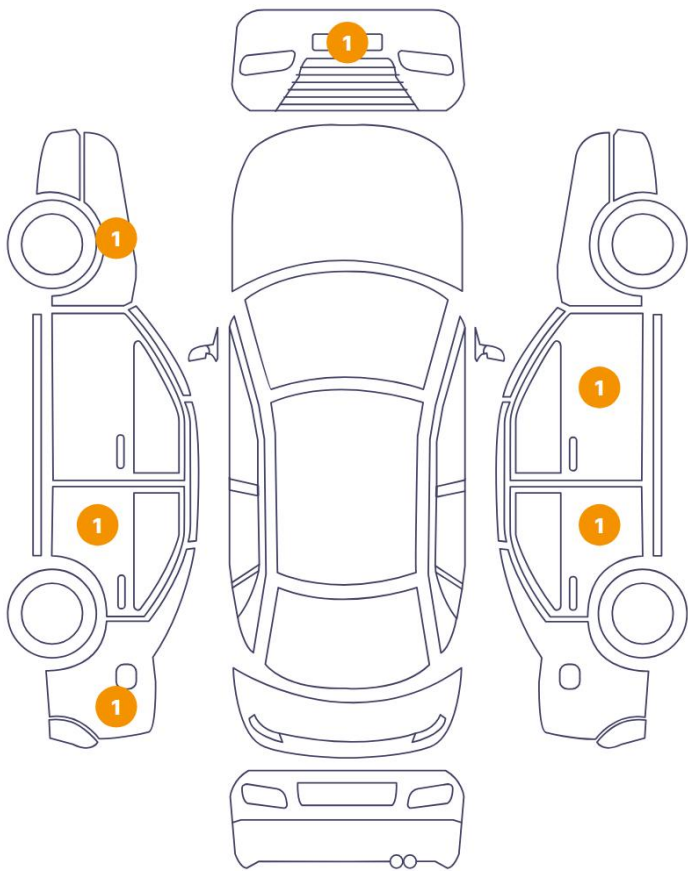
Air Conditioning	Yes	Alloy Wheel Size	15
------------------	-----	------------------	----

Wheels & Tyres

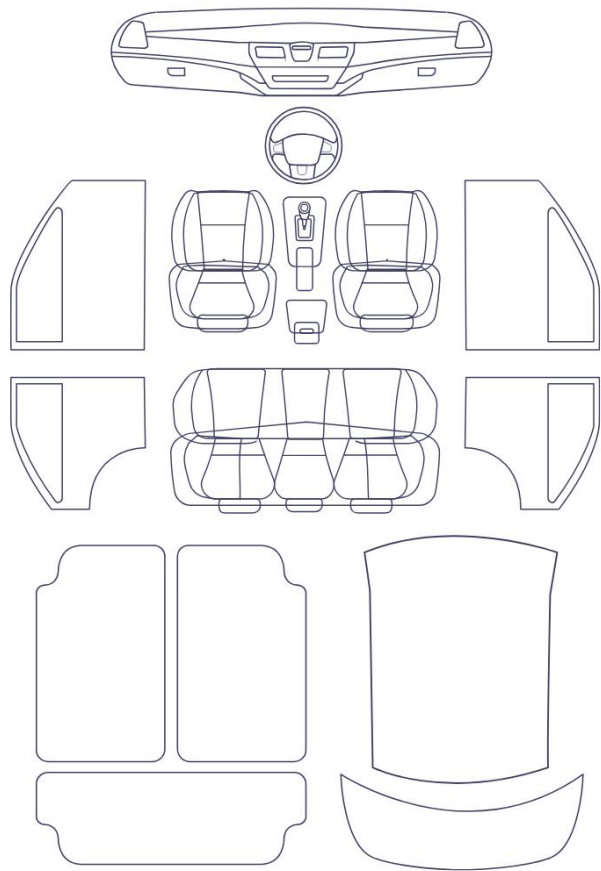
Left Rear Tyre Depth	7	Right Front Tyre Depth	4
Left Front Tyre Depth	5	Right Rear Tyre Depth	8

Cosmetic Damage

6 Schäden



1 Schäden



46

1

Component	Damage	Comments
1 Side Panel / Back Left	Paint / Scratch / Scuff	
2 Bumper / Front	Paint / Scratch / Scuff	
3 Cabin	Interior / Dysfunctional	
4 Mirror Shell / Front Right	Paint / Scratch / Scuff	
5 Door / Back Right	Paint / Scratch / Scuff	
6 Fender / Front Left	Paint / Scratch / Scuff	
7 Door / Back Left	Paint / Scratch / Scuff	

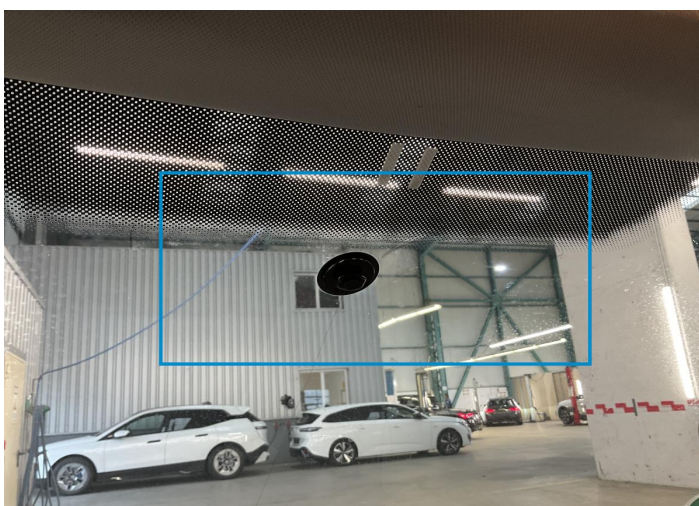




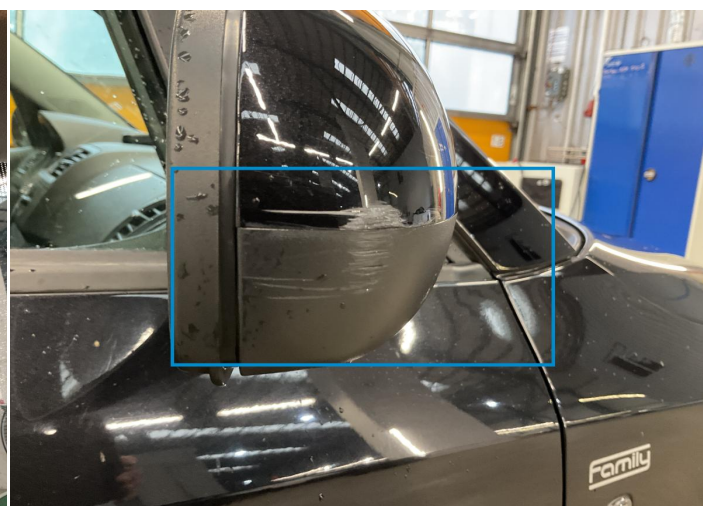
1. Side Panel / Back Left  
Paint / Scratch / Scuff -



2. Bumper / Front  
Paint / Scratch / Scuff -



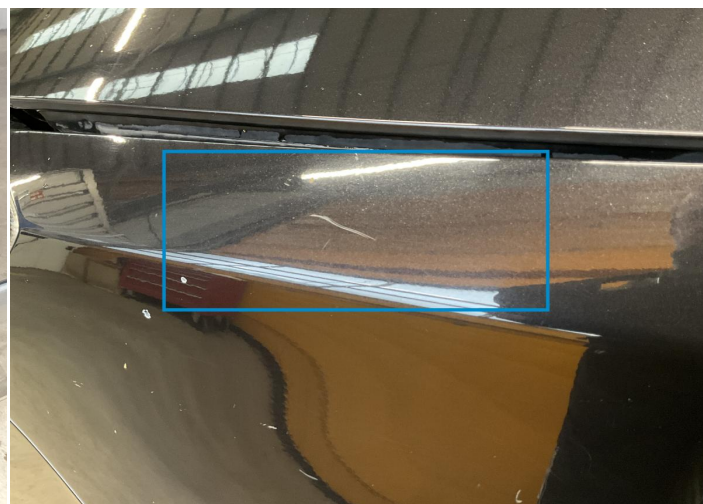
3. Cabin  
Interior / Dysfunctional -



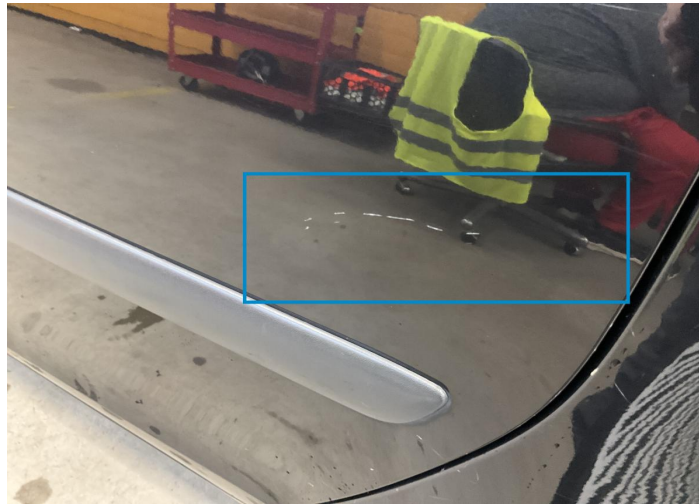
4. Mirror Shell / Front Right  
Paint / Scratch / Scuff -



5. Door / Back Right  
Paint / Scratch / Scuff -



6. Fender / Front Left  
Paint / Scratch / Scuff -



7. Door / Back Left  
Paint / Scratch / Scuff -



## Mechanical Condition

### Equipments Test

Central Locking	✓	Electric Windows	✓
Audio Equipment	✓	AC / Heating System	⚠
Main & Spare Keys Functioning	✓		

### Control Lights

ABS Warning Light	✓	ESP Fault/Traction Control Malfunction Light	✓
Diesel Particulate Filter Light	✓	Airbag Warning Light	✓
Oil Pressure Warning Light	✓	Brake Warning Light	✓
Power Steering Warning Light	✓	Alternator / Battery	✓
No Dashboard Lights	✓	Display Defect	✓
Service Light	✓		

### Engine

Engine Status / EML	✓	Engine Leak Visible	✓
Engine Starts	✓		

### Gearbox

Gear Box	✓
----------	---

### Levels

Brakes Fluid	✓	Coolant Fluid	✓
--------------	---	---------------	---

Test Drive Inspection

Steering Wheel			
Steering   Noise / Anomaly		✓	
Engine			
Engine Noise	✓	The Gears Scratch / Skip / Abnormal Operation	✓
Fume Quantity	✓	Power Loss	✓
Brake			
Brake System Anomaly		✓	
Clutch			
Clutch Functioning		✓	
General			
Test Driven Status		✓	
✓ <i>No troubles detected, good condition or correct tests, according to vehicle age and mileage</i>			
! <i>Damages or malfunction detected that requires repairs by the buyer</i>			
NA <i>Not applicable</i>			
= <i>Not tested</i>			

Disclaimer

Please also note the "UserGuide condition report", which shows the scope of the vehicle description.

[User Guide](#)