



SKODA Roomster

Roomster 1.6 16V

VIN NO TMBMD65J7A5037416
Registration Number J7A5037416



MOT Date



Last Service

2013-02-25

Number of Owners



Last Service Mileage

40613

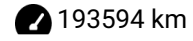
Number of Keys



First Registration Date

2010-03-18

Odometer Reading



Country First Registered



Inspection Report Summary

Customer	BCA Online	Report Number	P20251008143811
Inspection Date / Place	2025-10-08 / Dürkop Braunschweig	Cosmetic Grade	1

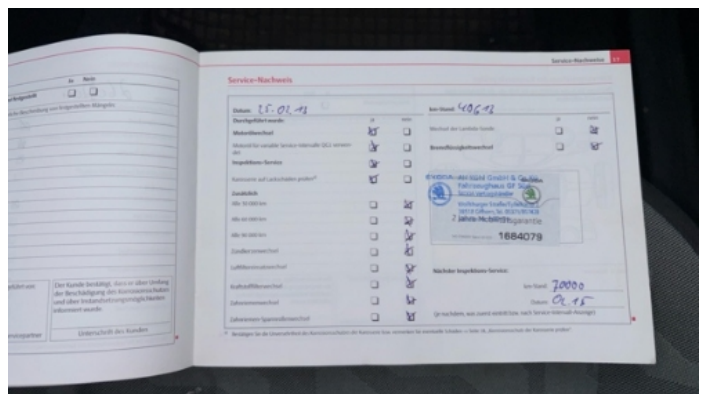
Vehicle Summary

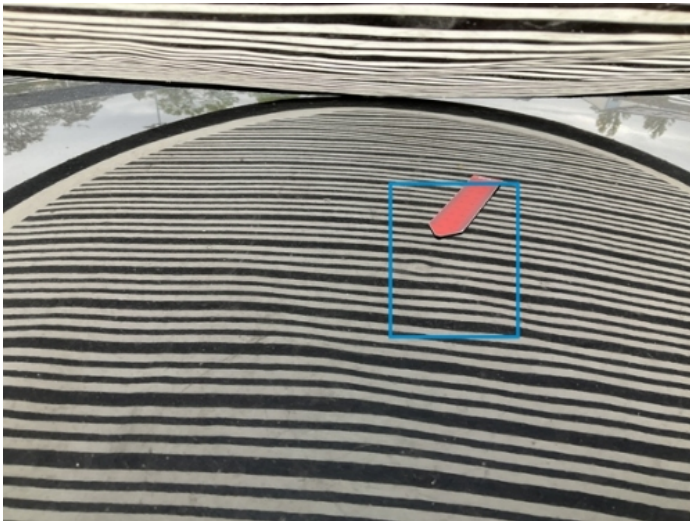
Vehicle Condition	Runner	VAT Type	Margin
Fuel Type	Petrol	Road Worthy	Yes
Colour	Black	Engine Size (cc)	1598
Engine Size	1.6	No of Doors	5
Body Type	Stationwagon / Estate	Drive Train	Front
Seat Colour		No of Seats	5
Seat Covering Name		Seat Covering	Cloth
Charging Cables		NEDC CO2 Rating (q/km)	165
Gearbox Type	Manual		

Vehicle History & Documents

Service Book Available	Incomplete	Next Service Mileage	km
Previous Usage		Imported	No
Manufacturer Warrenty			







Equipment

Trip Computer	Anti-lock braking	Heated wing mirrors	Roof rails
Stability control	Central locking	Radio	Airbag Status
Enhanced speaker system	Remote adjusting wing mirrors	Split folding rear seats	CD Player
Leather steering wheel	Rear parking sensors		

Equipment Details

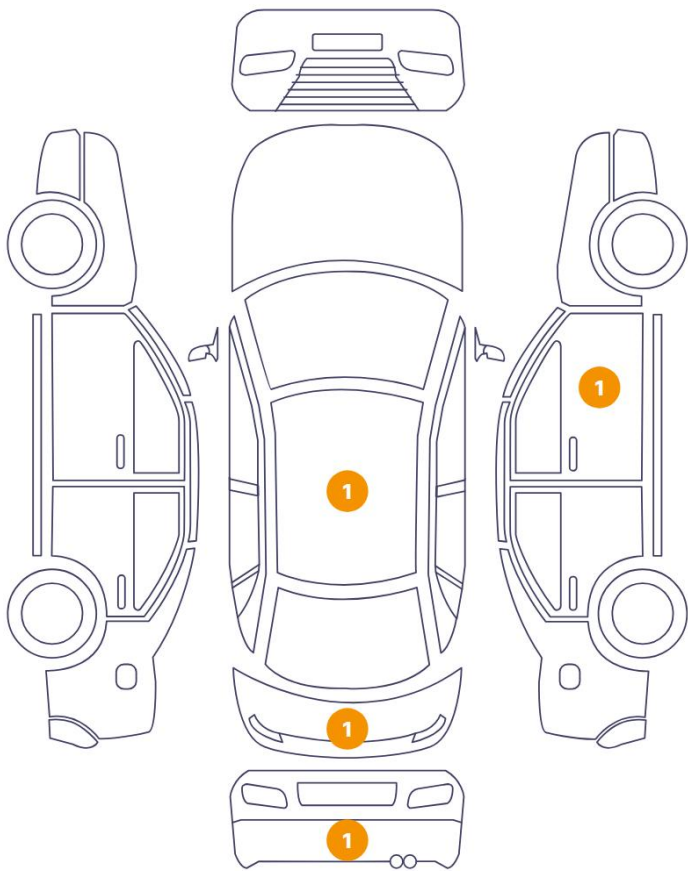
Air Conditioning	Climate Control	Seat Heating	Front
------------------	-----------------	--------------	-------

Wheels & Tyres

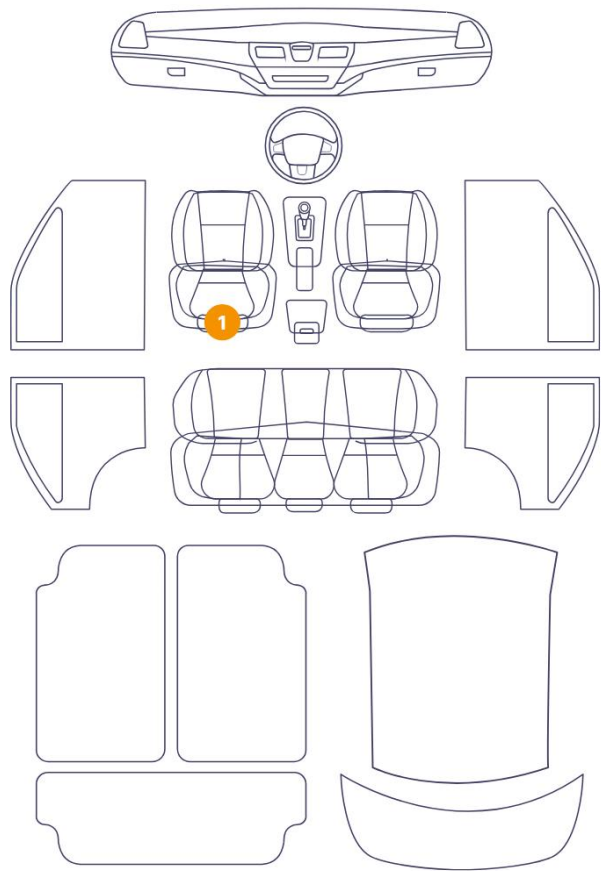
Right Rear Tyre Depth	2	Left Rear Tyre Depth	3
Right Front Tyre Depth	3	Left Front Tyre Depth	3

Cosmetic Damage

4 Schäden



1 Schäden



Component	Damage	Comments
1 Tailgate	Paint / Chemical Damage	
2 Seat / Front Left	Interior / Ripped	
3 Mirror Shell / Front Right	Paint / Scratch / Scuff	
4 Bumper / Back	Paint / Scratch / Scuff	
5 Roof	Bodywork / Dent / Dent	



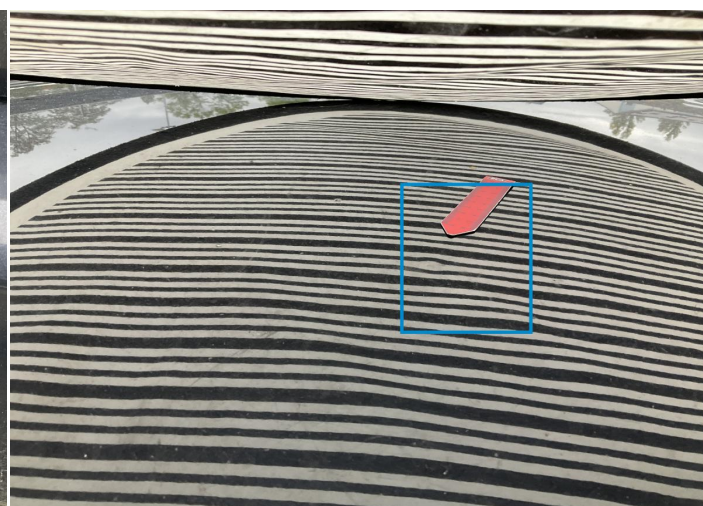
1. Tailgate
Paint / Chemical Damage -



3. Mirror Shell / Front Right
Paint / Scratch / Scuff -



4. Bumper / Back
Paint / Scratch / Scuff -



5. Roof
Bodywork / Dent / Dent -

Mechanical Condition

Engine

Engine Starts	✓	Engine Status / EML	✓
Engine Leak Visible	✓		

Equipments Test

Central Locking	✓	Electric Windows	✓
AC / Heating System	✓	Parking Sensors / Cameras Functioning	✓

Control Lights

ABS Warning Light	✓	ESP Fault/Traction Control Malfunction Light	✓
Airbag Warning Light	✓	Oil Pressure Warning Light	✓
Brake Warning Light	✓	Power Steering Warning Light	✓
Alternator / Battery	✓	All - wheel Drive	✓
No Dashboard Lights	✓	Display Defect	✓
Service Light	!	Tire Pressure Monitoring System	✓

Gearbox

Gear Box	✓
----------	---

Levels

Brakes Fluid	✓	Coolant Fluid	✓
--------------	---	---------------	---

Test Drive Inspection

Steering Wheel			
Steering Noise / Anomaly		✓	
Engine			
Engine Noise	✓	The Gears Scratch / Skip / Abnormal Operation	✓
Fume Quantity	✓	Power Loss	✓
Brake			
Brake System Anomaly		✓	
Clutch			
Clutch Functioning		✓	
General			
Test Driven Status		NA	
✓ No troubles detected, good condition or correct tests, according to vehicle age and mileage			
! Damages or malfunction detected that requires repairs by the buyer			
NA Not applicable			
☐ Not tested			

Disclaimer

Please also note the "UserGuide condition report", which shows the scope of the vehicle description. [User Guide](#)