



Expertise

Protocol number: 41628713
Order No. / Reference: 25145622
Inspection date: 19 Sept 2025

Manufacturer: Skoda	Model: Superb Combi 2.0 TDI 4x4 DSG Style
VIN: TMBLR7NP0N7052938	



Vehicle details	
Manufacturer / Type / Model / Equipment	
Skoda Superb Combi 2.0 TDI 4x4 DSG Style	
Vehicle Identification number	TMBLR7NP0N7052938
Mileage (Read)	152,075 km
First registration	15 Sept 2022
Number of holders	1
Power / Engine displacement	147 kw / 1,968 ccm
Fuel type / Cylinder	Diesel / 4
Gearbox / Number of gears	Automatic / 7
Type of drive	All-wheel drive
Type of vehicle	Station wagon
Colour / colour code	Brillant-Silber Metallic
Doors / Seats	5 / 5
Upholstery type	Cloth
Colour of upholstery	Black-Anthracite
Vehicle with smoke odor	no
Driving readiness	Not roadworthy / moveable



Vehicle details

Maintenance booklet / proof	digital proof / complete	Next maintenance in	27,900 km
Last maintenance on / at	08/2025 at 149,703 km		
Key is / should be	2 / 2	FZG documents	ZB#2 (B) was available (copy), ZB#1 (S) was not available
		Letter No.	GJ953734
Previous damage / Accident	Detectable	Repainting	Detectable
Inspection conditions	sufficient	Lifting equipment / pit	yes
Test drive	short drive on the company premises	Engine function test	Performed
Driving readiness	Not roadworthy / moveable		
Roadworthiness	not roadworthy/operational safe		
Manufacturer key number/ type code number	8004 / AWC 00336		
Emission standard	EURO6;WLTP;AP;PI/CI; M, N1 I	Fine dust sticker	
Permitted total weight	2,280 kg	Empty weight	

Tyres

Mounted tyres

#	Tyre size	Type of tyre	Manufacturer	Tread depth
1)	215/55 R17 94W	Summer tyres on Light alloy	Pirelli	4mm / 4mm
2)	215/55 R17 94W	Summer tyres on Light alloy	Pirelli	4mm / 4mm

Additional tyres

#	Tyre size	Type of tyre	Manufacturer	Tread depth
1)	215/55 R17 98V	Winter tyres on Light alloy	Goodyear	5mm / 5mm
2)	215/55 R17 98V	Winter tyres on Light alloy	Goodyear	6mm / 7mm

Replacement

Typ	Tyre size	Type of tyre	Manufacturer	Tread depth
	Tirefit	Expiration date 05/2026		

Legend: Tread depth information for tires on the left is in the first place, for tires on the right is in the second place on the axle in the direction of travel



Equipment

Standard equipment

- Storage compartments closed, behind the wheel arches in the trunk including cargo elements
- Airbag, driver and switchable passenger airbag
- Airbag, driver's knee airbag
- Airbag, head airbags
- Airbag, front side airbags
- 4x4 all-wheel drive
- Anti-lock braking system (ABS)
- Traction control (ASR)
- Dashboard in black / black, door trim in black, headliner in grey
- Exterior mirrors and door handles in body color
- Illuminated glove compartment
- Hill start assist
- Grey headliner
- Decorative inlay Dark Brushed
- Digital Cockpit Plus 10.2"
- Third brake light
- Easy Start (start-stop button instead of ignition lock)
- Electronic parking brake including auto-hold function
- Electronic transverse differential lock (XDS+)
- Driving light assistant and rain sensor (Easy Light Assist) (coming and leaving home function and tunnel light)
- Front radar assist including City Emergency Braking (The front radar assist warns of impending collisions and initiates braking to mitigate the impact of an unavoidable impact. The front radar assist continuously monitors the distance to the traffic ahead using a radar sensor integrated into the radiator grille.)
- Interior mirror automatically dimming
- Child safety locks for the rear doors and windows, electric
- Air Care Climatronic air conditioning system (2-zone) (fully automatic, separately adjustable for driver and front passenger including odor and allergen filter and climate-controlled glove compartment)
- Metal loading sill protection
- LED taillights in crystal glass look and animated indicators
- Steering wheel: Height and length adjustable leather steering wheel
- Matrix LED headlights (dynamic high beam assistant, automatic headlight range control, headlight cleaning system, LED rear lights in crystal glass optics, animated indicators)
- Multifunctional storage under the trunk cover
- LED fog lights with integrated cornering light
- Upholstery: Cloth
- Radio accessories: Digital radio reception DAB+
- Radio accessories: voice control
- Radio accessories: USB ports in the front (Type-C) and USB charging port (Type-A) in the center armrest
- Storage compartments (ticket holder on the windshield, 4 roof grab handles, rear with coat hooks, coat hook on the B-pillar, holder for the high-visibility vests in the front doors, glasses compartment on the roof lining, storage compartments in the door panels (front and rear) with 1.5l bottle holder, cup holder in the front center console with easy-open bottle opening, storage pockets on the front seat backrests, storage compartments behind the wheel arches in the trunk including cargo elements, illuminated trunk)
- Exterior mirrors electrically adjustable and heated
- Exterior mirrors, electrically folding (with boarding spots - automatically dimming on the driver's side)
- Hydraulic brake assist (HBA)
- Roof rails, anodized
- Diesel particulate filter and SCR catalyst
- tachometer
- Dynamic Light Assistant (Masked Permanent High Beam)
- Electric tailgate opening (with multifunctional storage under the trunk cover)
- Electronic Stabilization Control (ESC)
- Electric windows front and rear, including anti-pinch protection and child safety lock
- Footwell lighting front and rear
- Cruise control including speed limiter
- Transmission: 7-speed direct shift gearbox (DSG)
- Tinted windows
- Heated rear window
- Rear window wiper including windscreen washer system
- ISOFIX preparation on the outer rear seats, including top tether
- Trunk cover, roll-up and removable, semi-automatic
- Headrests height adjustable front and rear
- Chrome-plated radiator grille slats, frames and window surrounds
- LED reading lights at the front and rear of the roof lining
- Remote release of the rear seat backrests in the trunk
- Steering wheel: Steering wheel with multifunction buttons including shift paddles
- Rear center armrest with cup holders and through-loading option
- Front center armrest with storage compartment
- Engine drag torque control (MSR)
- Multi-collision brake
- Rear parking sensors
- Radio: Bolero infotainment system (capacitive 8" touch display in glass design - Wireless Smartlink (Apple CarPlay, Android Auto))
- Radio accessories: Wireless SmartLink (Apple CarPlay, Android Auto)
- Tire pressure monitoring



- Umbrella compartments in the front side doors
- Tire mobility kit (tire repair spray including compressor)
- Leather gearshift and handbrake levers
- Heated windscreen washer nozzles
- Superb seat belts (height-adjustable three-point seat belts in the front, with belt tensioners - three three-point seat belts in the rear - seat belt warning lights for all seats)
- Seats: Electric operation of the front passenger seat from the rear
- Seats: Rear seat backrest 60:40 split folding
- Sun visor on driver and passenger side with illuminated make-up mirror
- Automatic start/stop system including brake energy recovery
- 12-V socket in the trunk
- 12-V socket in the center console front and rear
- Sunset (rear window and rear side windows dark tinted)
- Phone: Bluetooth hands-free system
- Door sill plates
- Glazing: Acoustic glazing in the front side windows
- Lashing eyes in the trunk
- Central locking with radio remote control

Extra equipment

- Trailer coupling, pivoting including trailer stabilization
- Paint finish: metallic
- Package: Assistance (Lane Change Assistant - Rear View Camera - Park Assist - Trailer Hitch Preparation - Active Tire Pressure Monitoring System - Tire Pressure Detection)
- Package: Transport (Combi) (trunk net - variable loading floor - luggage net partition)
- Railing supports
- Protective film for rear bumper
- Auxiliary heater with radio remote control

- Wheels: 17" Stratos alloy wheels (7J x 17" ET 40 with 215/55 R17 tires)
- Power steering, electromechanical
- Seats: Heated front seats
- Seats: Adjustable lumbar supports in the front seats
- Seats: Electrically adjustable front seats (driver's seat and exterior mirrors with memory function)
- Seats: Height-adjustable front seats
- SKODA Care Connect (SOS emergency call function (Emergency Call including automatic activation in the event of an accident with airbag deployment), mobility service (connection option for rapid assistance in the event of a breakdown), information service (connection option to the hotline for all questions about vehicle functions), free remote vehicle access for 1 year (Remote Access) with access to vehicle data and functions via smartphone, e.g., parking position, activating hazard lights, current fuel level)
- Chrome-plated elements (air vents, light switches, music or navigation systems, air conditioning)
- Immobiliser

Brief expert findings

Documents submitted	At the time of the inspection, the registration certificate Part 2 (letter) was available, but the registration certificate Part 1 (certificate) was not. (Copy)
VIN comparison	The vehicle identification number (VIN) was read from the vehicle and its conformity with the submitted documents was verified during the inspection by the undersigned.
Inspection	The inspection conditions were sufficient for the assessment of the vehicle. Lifting equipment and a pit were available for examining the vehicle.
Test drive	A short movement and shunting trip was carried out on the company premises.
Engine function test	An engine test run was performed.
Driving readiness	At the time of inspection, the vehicle was not drivable under its own power, but can be moved on its own axle with the aid of auxiliary equipment.
Roadworthy/operational safe	At the time of the inspection, the vehicle was not operational or roadworthy due to the damage characteristic listed under accident or value-reducing factors.

Value reducing factors



No.	Component group	Description
1	Instrument panel	Indicator light (Reifendruckkontrolle aktiv) - on - Perform diagnosis
2	Roof	Roof rail - left side - dent(s) - Smart repair
3	Door - rear left side	Brightware - lower - Scratch(es) - Smart repair
4	Door - front left side	Brightware - lower - Scratch(es) - Smart repair
5	Front bumper	Front bumper - Scratched - Smart repair
6	Sill - right side	Sill - Scratch(es) - Smart repair
7	Side panel - rear left side	Sill - Scratch(es) - Smart repair
8	Wheel / tyres	Tyre - front left side - Damaged - Replace
9	Wheel / tyres	Alloy rim - rear left side - Scratched - Paint
10	Front bumper	Protection strip - centre (Chrom Leiste) - Broken / torn - Replace
11	Rear bumper	Rear bumper - Scratched - Paint
12	Roof	Roof rail - left side - Scratch(es) - Replace
13	Roof	Roof - Scratch(es) - Paint
14	Vehicle glazing	Windscreen - Stone chips - Replace

Wear and tear

No.	Component group	Description
1	Roof	Roof rail - right side - Scratch(es) - No deduction

The vehicle shows signs of wear commensurate with its age and use.

Missing parts

Description
Documents - Log book (+ Unterlagen)

Previous damages

No.	Previous damage	Extent of damage (Net)
1	Front, Side - left, Provided by user / customer, from 15 Jul 2024	3.153,27 €
2	Front, Side right, Provided by user / customer, from 19 Aug 2025	6.742,53 €

Repainting

No.	Repainting
1	Bonnet, Professionally carried out, Invoice of repair done Non-existent
2	Side panel - rear left side, Professionally carried out, Invoice of repair done Non-existent
3	Door - front right side, Professionally carried out, Invoice of repair done Non-existent

Paint coat thickness measurement

Bonnet	180 µm	Side panel - rear left side	239 µm
Door - front right side	192 µm		



Order/Scope of order

The order was placed to prepare a sales report for the vehicle described. This includes the following:

- Description of core relevant information about the vehicle
- Documentation of equipment features
(Delivery by third-party service providers)
- Documentation of damage, defects, missing parts
- Documentation of previous damage, unrepaired previous damage, repainting
- a brief visual or functional inspection of the equipment details if possible.
(Functional tests of driver assistance systems are not included in the scope of services!)
- a photo documentation of the vehicle

Basis for the order

This product is based on the Alphabet Fuhrpark GmbH guidelines for vehicle returns and valuations. The expert makes the explicit findings in each individual case objectively within the framework of the specified standards based on his or her own expertise.

The vehicle inspection takes place in a disassembled state.

Damage or defects that can only be detected during disassembly/diagnosis work or through advanced knowledge remain within the scope of the prognosis risk. An extended risk exists for concealed defects caused by fraudulent deception and not identifiable by the expert.

Damage or defects resulting from normal use or wear and tear of the vehicle will be accepted according to the applicable standard.

There was no explicit identification or monetary consideration of the expected features within the product.

Features which in their nature and severity slightly exceed normal use but do not constitute unacceptable damage will be documented and identified under signs of use if necessary.

Damage or defects which, according to the underlying standard, can no longer be attributed to normal use or wear and tear are listed in the product under "Depreciating Factors".

Depending on the product specification, a monetary ID can be provided. If this takes place, the costs can be 100% d or pro rata depending on the vehicle's age and mileage.

Previous damages

According to available information previous damages were repaired at the vehicle. Traces of repairs, which allow conclusions about the area of repair, were not recognizable during the inspection.

Comments

- Winterradsatz ist kein Bestandteil des Auslieferungsumfangs.



Figure 1: Diagonal front (left)



Figure 2: Diagonal front (right)



Figure 3: Diagonal rear (left)



Figure 4: Diagonal rear (right)



Figure 5: Interior - front



Figure 6: Interior - rear



Figure 7: Instrument cluster



Figure 8: Instrument panel



Figure 9: Interior 360° view



Figure 10: Cargo area



Figure 11: VIN



Figure 12: Mounted tyres



Figure 13: Documents



Figure 14: Documents

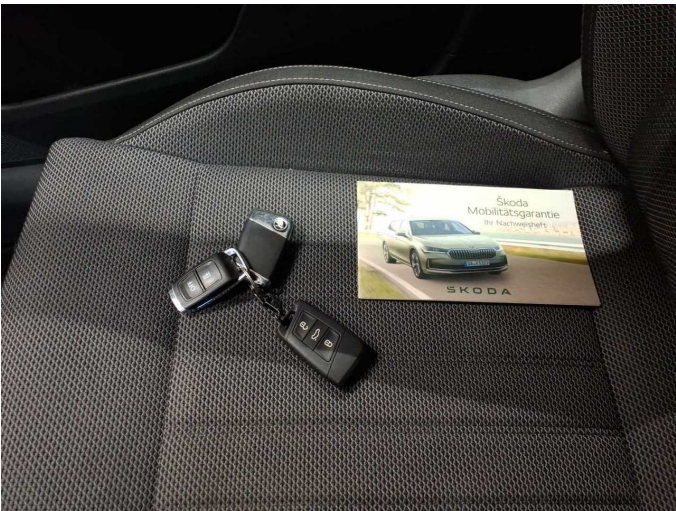


Figure 15: Documents



Figure 16: Additional tyres



Figure 17: Navigation

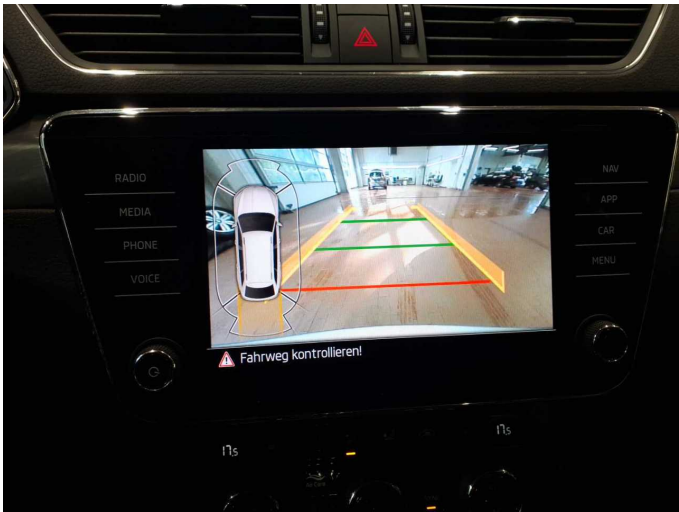


Figure 18: Misc.



Figure 19: Misc.



Figure 20: Misc.



Figure 21: Misc.



Figure 22: Misc.



Figure 23: Misc.



Figure 24: Misc.



Figure 25: Misc.

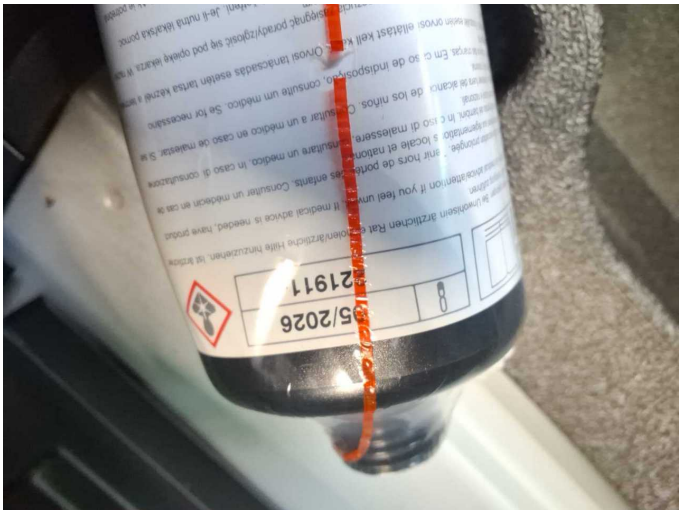


Figure 26: Misc.



Figure 27: Misc.



Figure 28: Misc.

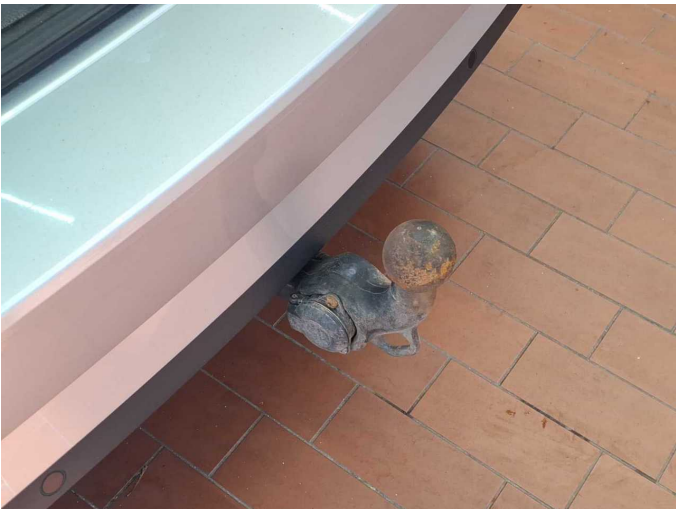


Figure 29: Misc.



Figure 30: Misc.



Figure 31: Misc.



Figure 32: Misc.



Figure 33: Misc.



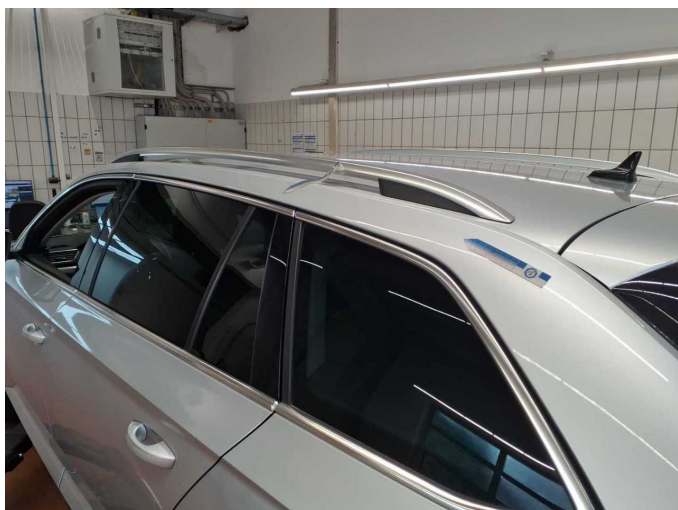
Figure 34: Misc.



Figure 35: Misc.



Damage 1: Instrument panel: Indicator light (Reifendruckkontrolle aktiv) - on - Perform diagnosis



Damage 2: Roof: Roof rail - left side - dent(s) - Smart repair



Damage 2: Roof: Roof rail - left side - dent(s) - Smart repair



Damage 2: Roof: Roof rail - left side - dent(s) - Smart repair



Damage 3: Door - rear left side: Brightware - lower - Scratch(es) - Smart repair



Damage 3: Door - rear left side: Brightware - lower - Scratch(es) - Smart repair



Damage 3: Door - rear left side: Brightware - lower - Scratch(es) - Smart repair



Damage 5: Front bumper: Front bumper - Scratched - Smart repair



Damage 5: Front bumper: Front bumper - Scratched - Smart repair



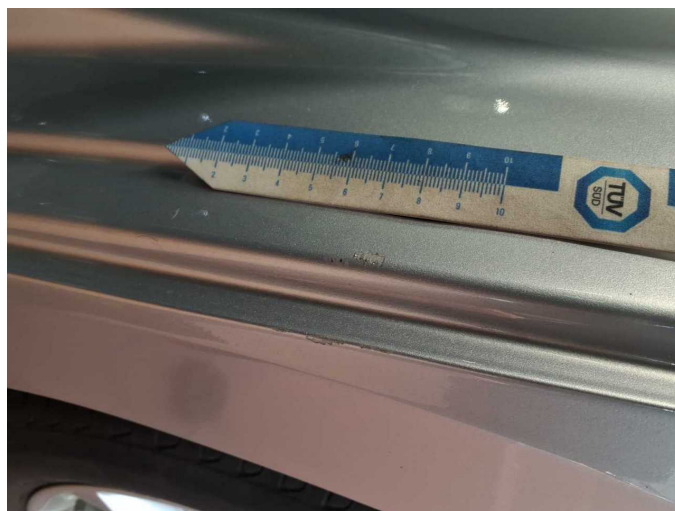
Damage 6: Sill - right side: Sill - Scratch(es) - Smart repair



Damage 6: Sill - right side: Sill - Scratch(es) - Smart repair



Damage 7: Side panel - rear left side: Sill - Scratch(es) - Smart repair



Damage 7: Side panel - rear left side: Sill - Scratch(es) - Smart repair



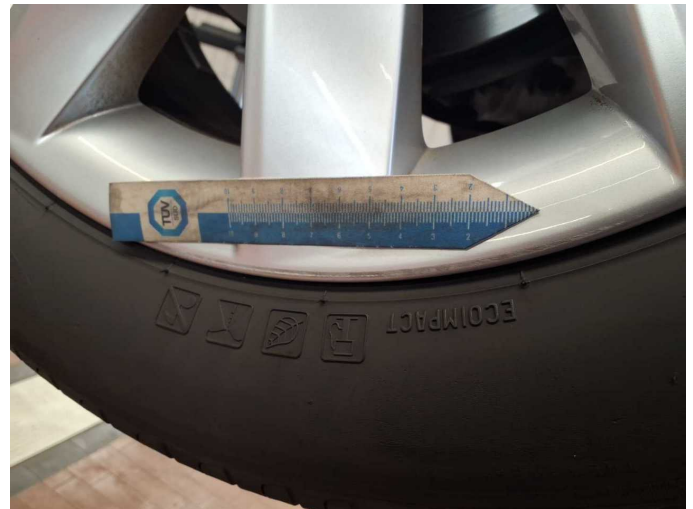
Damage 8: Wheel / tyres: Tyre - front left side - Damaged - Replace



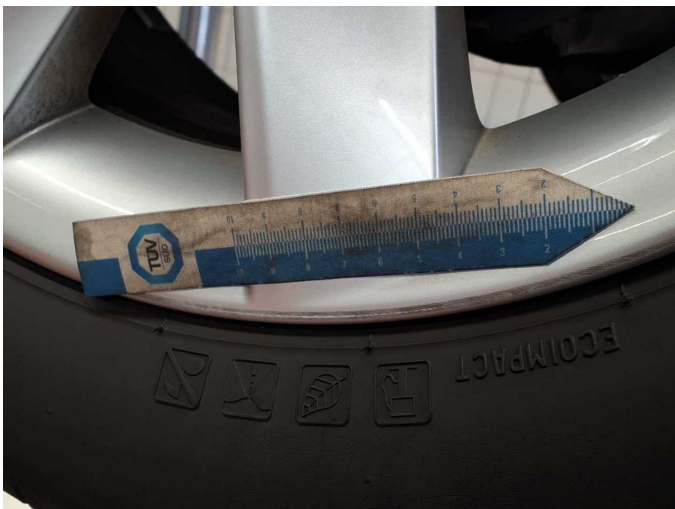
Damage 8: Wheel / tyres: Tyre - front left side - Damaged - Replace



Damage 9: Wheel / tyres: Alloy rim - rear left side - Scratched - Paint



Damage 9: Wheel / tyres: Alloy rim - rear left side - Scratched - Paint



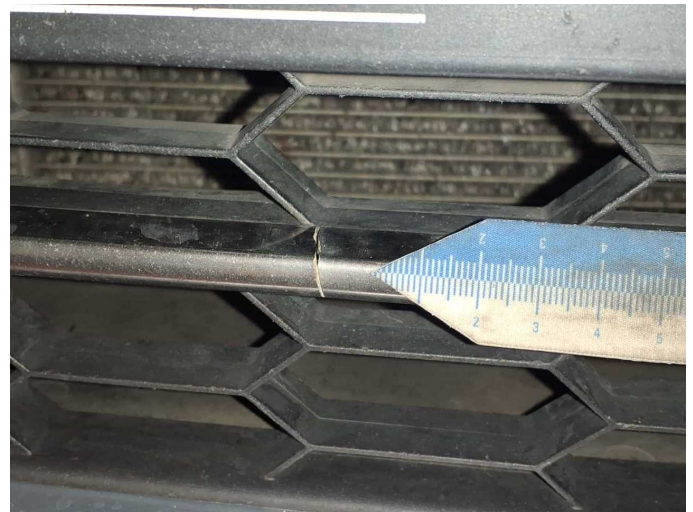
Damage 9: Wheel / tyres: Alloy rim - rear left side - Scratched - Paint



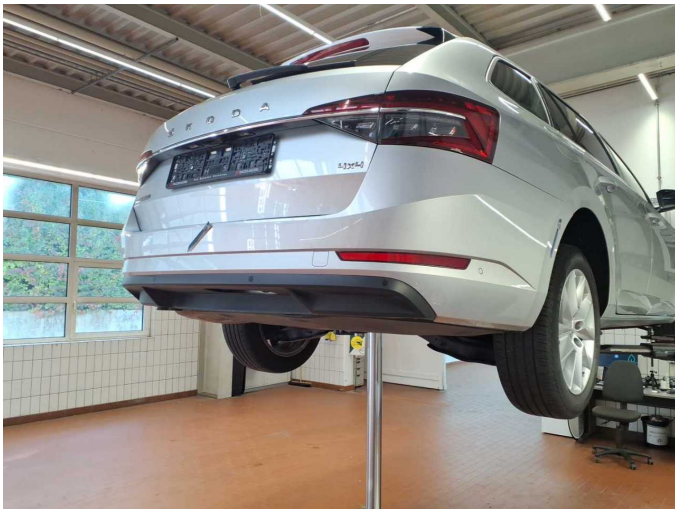
Damage 9: Wheel / tyres: Alloy rim - rear left side - Scratched - Paint



Damage 10: Front bumper: Protection strip - centre (Chrom Leiste) - Broken / torn - Replace



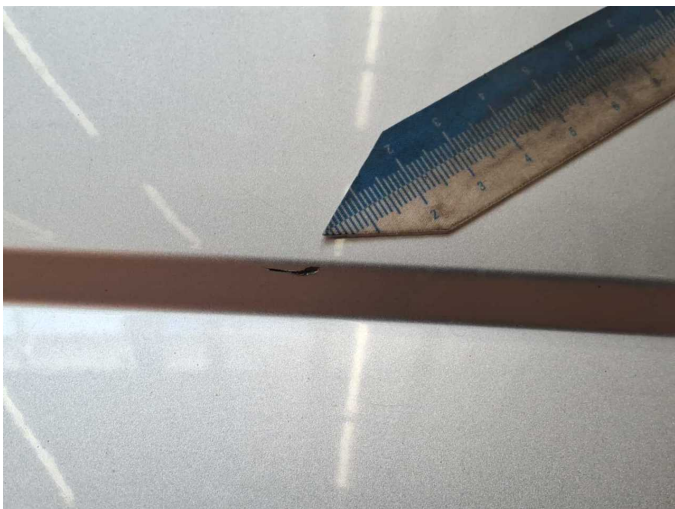
Damage 10: Front bumper: Protection strip - centre (Chrom Leiste) - Broken / torn - Replace



Damage 11: Rear bumper: Rear bumper - Scratched - Paint



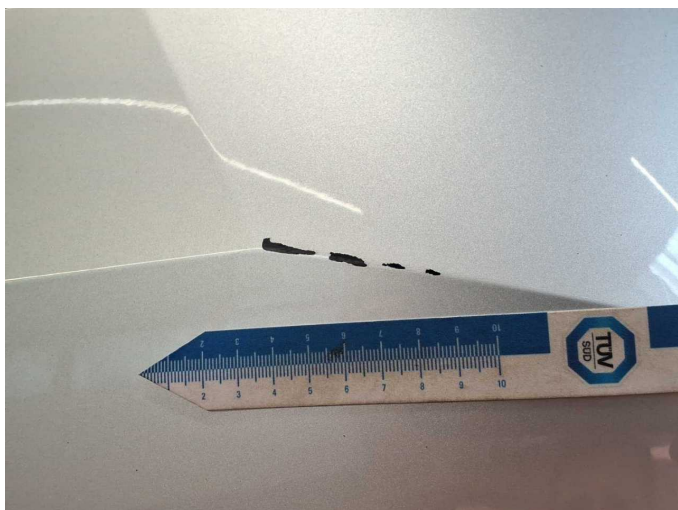
Damage 11: Rear bumper: Rear bumper - Scratched - Paint



Damage 11: Rear bumper: Rear bumper - Scratched - Paint



Damage 11: Rear bumper: Rear bumper - Scratched - Paint



Damage 11: Rear bumper: Rear bumper - Scratched - Paint



Damage 12: Roof: Roof rail - left side - Scratch(es) - Replace



Damage 12: Roof: Roof rail - left side - Scratch(es) - Replace



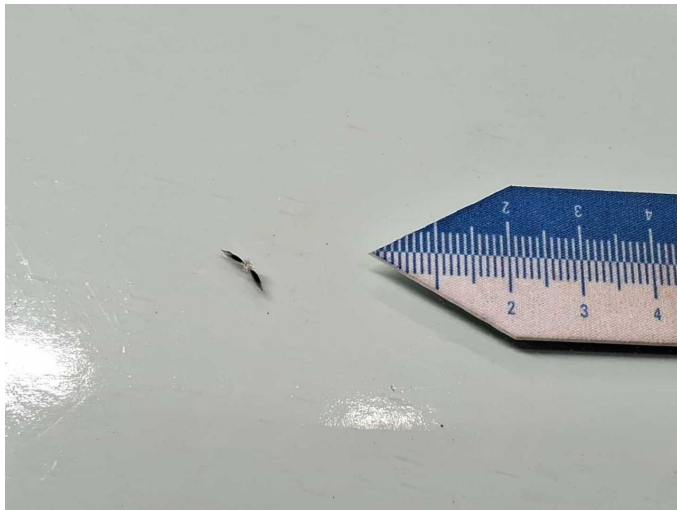
Damage 13: Roof: Roof - Scratch(es) - Paint



Damage 13: Roof: Roof - Scratch(es) - Paint



Damage 14: Vehicle glazing: Windscreen - Stone chips - Replace



Damage 14: Vehicle glazing: Windscreen - Stone chips - Replace



Damage 14: Vehicle glazing: Windscreen - Stone chips - Replace



Repainting 1: Bonnet



Repainting 2: Side panel - rear left side



Repainting 3: Door - front right side



Wartungshistorie

(gemäß Auftraggeber Informationen)

Fahrgestellnummer: TMBLR7NP0N7052938
Hersteller / Modell: SKODA SKODA Superb Combi 2.0 TDI 4x4 DSG Style

Datum	KM-Stand	Beschreibung
04.08.2025	149.703	Motoröl b. Wartung; Ölfilter ern; Regelwartungsdienst; Wartung Sonstiges
22.07.2025	146.589	Bremse Sonstiges; Bremsflüssigkeit; Bremsflüssigkeit ern; Bremsklötze hinten; Bremssattel ern/inst; Bremsscheiben hinten
17.04.2025	130.231	Bremse Sonstiges; Bremsklötze vorne; Bremsscheiben vorne
13.02.2025	118.529	Getriebeöl ern/prüfen; Motoröl b. Wartung; Ölfilter ern; Regelwartungsdienst; Wartung Sonstiges
20.11.2024	105.177	Bremsklötze hinten
18.11.2024	104.284	Batterie ern
21.08.2024	89.836	Bremsflüssigkeit; Bremsflüssigkeit ern; Getriebeöl ern/prüfen; Kraftstofffilter ern; Luftfiltereinsatz ern; Motoröl b. Wartung; Ölfilter ern; Ölwechsel - Hinterachse; Regelwartungsdienst; Systemtest/Eigendiagnose; Wartung Sonstiges
23.11.2023	59.364	Motoröl b. Wartung; Ölfilter ern; Regelwartungsdienst; Wartung Sonstiges
23.10.2023	54.257	Bremse Sonstiges; Bremsklötze hinten; Bremsklötze vorne; Bremsscheiben hinten; Bremsscheiben vorne
15.06.2023	30.536	Motoröl b. Wartung; Ölfilter ern; Regelwartungsdienst; Wartung Sonstiges
09.03.2023	16.431	Bremse Sonstiges; Bremsklötze vorne; Bremsscheiben + Klötze v; Bremsscheiben vorne