

Expertise

Protocol number: 41056738
Order No. / Reference: 24990959
Inspection date: 13 Aug 2025

Manufacturer: Skoda

Model: Kodiaq 2.0 TDI 4x4 DSG L&K

VIN: TMBLN7NS3N8050188



Vehicle details

Manufacturer / Type / Model / Equipment

Skoda Kodiaq 2.0 TDI 4x4 DSG L&K

Vehicle Identification number TMBLN7NS3N8050188

Mileage (Read) 83,524 km

First registration 18 May 2022

Number of holders 1

Next periodical technical inspection 07/2027
(Report on hand)

Power / Engine displacement 147 kw / 1,968 ccm

Fuel type / Cylinder Diesel / 4

Gearbox / Number of gears Automatic / 7

Type of drive All-wheel drive

Type of vehicle SUV

Colour / colour code Graphite Grau Metallic

Doors / Seats 5 / 5

Upholstery type Leather

Colour of upholstery Black



Vehicle details

Maintenance booklet / proof	digital proof / complete	Next maintenance in	3,500 km
Last maintenance on / at	06/2024 at 57,029 km		
Key is / should be	2 / 2	FZG documents	ZB#2 (B) was available (copy), ZB#1 (S) was not available
		Letter No.	GJ915295
Previous damage / Accident	None detectable	Repainting	None detectable
Inspection conditions	sufficient	Lifting equipment / pit	yes
Test drive	Not performed	Engine function test	Performed
Manufacturer key number/ type code number	8004 / AVW 00378		
Emission standard	EURO6;WLTP;AP;PI/CI; M, N1 I	Fine dust sticker	
Permitted total weight	2,410 kg	Empty weight	

Tyres

Mounted tyres

#	Tyre size	Type of tyre	Manufacturer	Tread depth
1)	235/50 R19 99V	Summer tyres on Light alloy	Hankook	5mm / 5mm
2)	235/50 R19 99V	Summer tyres on Light alloy	Hankook	5mm / 5mm

Additional tyres

#	Tyre size	Type of tyre	Manufacturer	Tread depth
1)	215/65 R17 99H	Winter tyres on Light alloy	Continental	5mm / 5mm
2)	215/65 R17 99H	Winter tyres on Light alloy	Continental	5mm / 5mm

Replacement

Typ	Tyre size	Type of tyre	Manufacturer	Tread depth
N	145/85 R18 103M	Summer tyres on Steel	Sonstige	3 mm

Legend: Tread depth information for tires on the left is in the first place, for tires on the right is in the second place on the axle in the direction of travel



Equipment

Standard equipment

- 12V socket in the center console and trunk
- Storage compartments behind the wheel arch in the trunk
- Aero wipers front
- Airbag, driver and passenger
- Airbag, head airbags
- Allergen filter
- Anti-lock braking system (ABS)
- Dashboard in black / black, door trim in black
- Electrically adjustable and heated exterior mirrors with integrated side indicators
- Hydraulic brake assist (HBA)
- Grey headliner
- Decorative inlay Piano-Black L&K
- tachometer
- Easy Start (start-stop button)
- Electric tailgate operation
- Electronic transverse differential lock (XDS+)
- Headlight assistant and rain sensor
- High beam assistant (Light Assist)
- Floor mats front and rear
- Rear footwell lighting
- Closed storage compartment on the driver's side
- Transmission: 7-speed dual-clutch transmission (DSG)
- Illuminated glove compartment
- Kessy - keyless entry and start-stop system
- Climatronic air conditioning (2 zones)
- Headrests height adjustable front and rear
- LED ambient lighting
- LED taillights in crystal glass look & LED license plate lighting
- Reading lights on the front roof lining
- Rear center armrest with cup holders and through-loading option
- Multifunction display in the instrument cluster, color
- Parking sensors front & rear
- Upholstery: L&K leather interior with ventilated front seats
- wheel arch cover
- Radio accessories: CANTON sound system
- Radio accessories: SmartLink
- Tire pressure monitoring
- Wheels: 19" Sirius alloy wheels, high-gloss
- Heated windscreen washer nozzles, front
- Headlights washer / wiper system
- Seat belts Kodiaq
- Seats: Adjustable lumbar supports in the front seats
- Seats: Height-adjustable front seats
- Seats: Remote release of the rear seat backrests (2nd row) in the trunk
- Speed limiter
- Storage compartment on the left wheel house
- Adaptive Cruise Control ACC (control range up to 210 km/h)
- Airbag, driver's knee airbag
- Airbag, front side airbags
- All-wheel drive permanent
- Traction control (ASR)
- Electrically folding exterior mirrors including interior and driver's mirror with automatic dimming
- Hill start assist
- Care Connect: Proactive Services (10-year term)
- Roof rails, anodized
- diesel particulate filter
- Third brake light
- eCall
- Electronic parking brake including auto-hold function
- ESC Electronic Stabilization Control
- Electric windows front and rear
- Front radar assistant including city emergency braking function with person detection
- Front footwell lighting
- Cruise control system
- Tinted windows
- Isofix anchorage on the outer rear seats including top tether
- Trunk cover, rollable and removable
- Paint finish: metallic / pearl effect
- LED matrix headlights and dynamic high beam assistant (Light Assist)
- Steering wheel: Leather steering wheel with multifunction buttons including shift paddles
- Front center armrest, including storage compartment
- Engine drag torque control (MSR)
- Multi-collision brake
- Pedals in stainless steel design
- Progressive steering
- Radio: Bolero infotainment system
- Radio accessories: Digital radio reception DAB+
- Radio accessories: Wireless SmartLink
- Wheels: 18" steel spare wheel, space-saving
- Rear seat backrest 60:40 split folding, longitudinally adjustable, backrest angle
- Power steering, electromechanical
- Seats: Heated front seats
- Seats: Electrically adjustable front seats with memory function
- Skoda Care Connect
- Sun visor on driver and passenger side with vanity mirror (illuminated)
- Lane change (blind spot detection) and rear parking assistant



- Lane keeping (Lane Assist), lane change (Blind-Spot Detection) and rear traffic jam assistant
- Sunset
- Front door sills
- 360° area view camera including rear view camera
- Lashing eyes in the trunk
- Central locking with radio remote control

- Telephone: Comfort hands-free telephone system including phone box
- Variable fastening concept in the trunk
- Immobiliser

Extra equipment

- Trailer coupling, swiveling (with electric release, including trailer stabilization)
- Driving profile selection (including off-road assistant for 4x4 drive)
- Climatronic air conditioning (3-zone) (fully automatic, separately adjustable for driver, front passenger and rear)
- Package: Business Amundsen (L&K) (Dynamic radio navigation system Amundsen - Digital instrument cluster (Virtual Cockpit) - Driver Drowsiness Detection - 230V socket and a USB charging port (Type-C) on the back of the front center armrest - Acoustic glazing in the front doors - Luggage net partition - Infotainment Online (3-year term))
- Electric panoramic sliding roof including sun blind (no glasses compartment on the roof lining)
- Windshield, wirelessly heated

- Traveller Plus (DSG) assistance system (Adaptive Distance Assistant ACC (control range up to 210 km/h) - Lane Keeping (Lane Assist), Lane Change (Blind Spot Detection) and Rear Parking Assistant, Exit Warning - Adaptive Lane Guidance - Park Steering Assistant - Traffic Jam and Emergency Assist - Traffic Sign Recognition)
- Package: Business Columbus (L&K) (Dynamic Radio-Navi Columbus - Capacitive 9.2" color display - Digital instrument cluster (Virtual Cockpit) - Fatigue detection - 230V socket and one USB charging port (Type-C) - Acoustic glazing in the front doors - Luggage net partition - Infotainment Online (3-year term))
- Upholstery: Glamour leather interior with ventilated ergonomic front seats (including manual seat extension - seat surfaces made of fine Nappa leather, combined with high-quality materials)

Brief expert findings

Documents submitted	At the time of the inspection, the registration certificate Part 2 (letter) was available, but the registration certificate Part 1 (certificate) was not. (Copy)
VIN comparison	The vehicle identification number (VIN) was read and the undersigned verified that it matched the documents submitted during the inspection.
Inspection	The inspection conditions were sufficient for the assessment of the vehicle. Lifting equipment and a pit were available for examining the vehicle.
Test drive	No test drive/maneuvering was carried out during the inspection of the vehicle.
Engine function test	An engine test run was performed.

Value reducing factors

No.	Component group	Description
1	Wing mirror - right side	Cap - Scratch(es) - Smart repair
2	Door - rear left side	Door - Scratch(es) - Smart repair
3	Door - rear right side	Door - Scratch(es) - Paint
4	Door - front right side	Door - Dent / paintcoat damage - Repair and paint

Wear and tear

No.	Component group	Description
1	Bonnet	Bonnet - Stone chips - No deduction
2	Vehicle glazing	Windscreen - Stone chips - No deduction
3	Front bumper	Front bumper - Stone chips - No deduction

The vehicle shows signs of wear commensurate with its age and use.



Order/Scope of order

The order was placed to prepare a sales report for the vehicle described. This includes the following:

- Description of core relevant information about the vehicle
- Documentation of equipment features
(Delivery by third-party service providers)
- Documentation of damage, defects, missing parts
- Documentation of previous damage, unrepaired previous damage, repainting
- a brief visual or functional inspection of the equipment details if possible.
(Functional tests of driver assistance systems are not included in the scope of services!)
- a photo documentation of the vehicle

Basis for the order

This product is based on the Alphabet Fuhrpark GmbH guidelines for vehicle returns and valuations. The expert makes the explicit findings in each individual case objectively within the framework of the specified standards based on his or her own expertise.

The vehicle inspection takes place in a disassembled state.

Damage or defects that can only be detected during disassembly/diagnosis work or through advanced knowledge remain within the scope of the prognosis risk. An extended risk exists for concealed defects caused by fraudulent deception and not identifiable by the expert.

Damage or defects resulting from normal use or wear and tear of the vehicle will be accepted according to the applicable standard.

There was no explicit identification or monetary consideration of the expected features within the product.

Features which in their nature and severity slightly exceed normal use but do not constitute unacceptable damage will be documented and identified under signs of use if necessary.

Damage or defects which, according to the underlying standard, can no longer be attributed to normal use or wear and tear are listed in the product under "Depreciating Factors".

Depending on the product specification, a monetary ID can be provided. If this takes place, the costs can be 100% d or pro rata depending on the vehicle's age and mileage.

Previous damages

Apparently, no repaired previous damage could be found on the vehicle.

Comments

- Der 2.Radsatz gehört nicht zur Ausstattung und wurde nicht in der Bewertung berücksichtigt.



Figure 1: Diagonal front (left)



Figure 2: Diagonal front (right)



Figure 3: Diagonal rear (left)



Figure 4: Diagonal rear (right)



Figure 5: Interior - front



Figure 6: Interior - rear



Figure 7: Instrument cluster



Figure 8: Instrument panel



Figure 9: interior 360° view ([Online link](#))



Figure 10: Cargo area



Figure 11: VIN



Figure 12: Mounted tyres



Figure 13: Documents

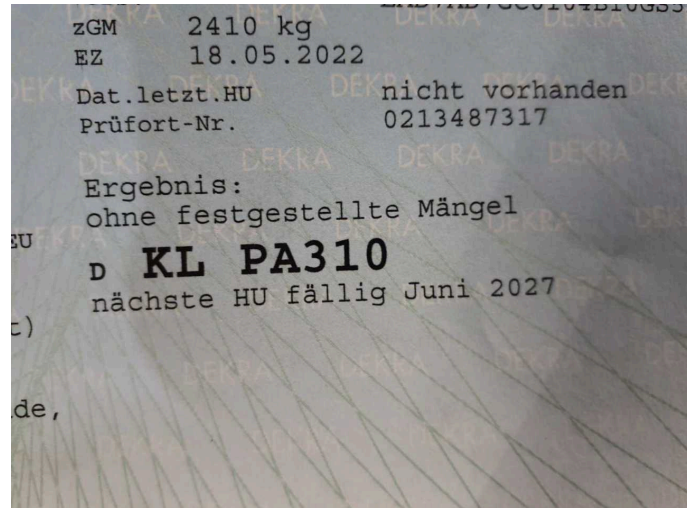


Figure 14: Documents

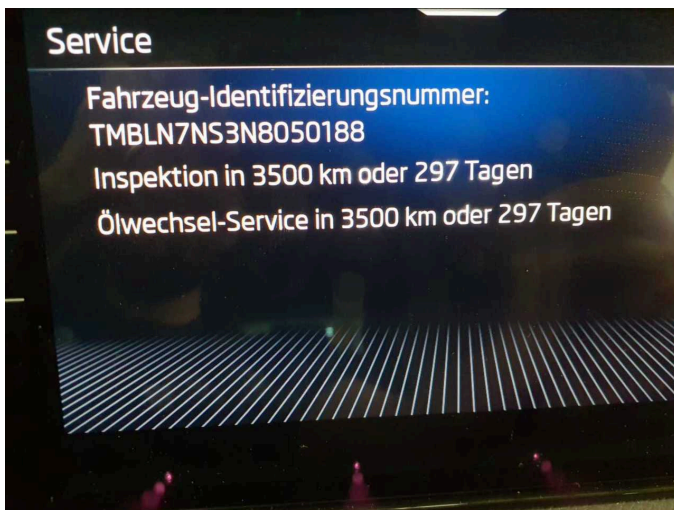


Figure 15: Documents



Figure 16: Documents



Figure 17: Additional tyres



Figure 18: Additional tyres



Figure 19: Navigation



Figure 20: Misc.

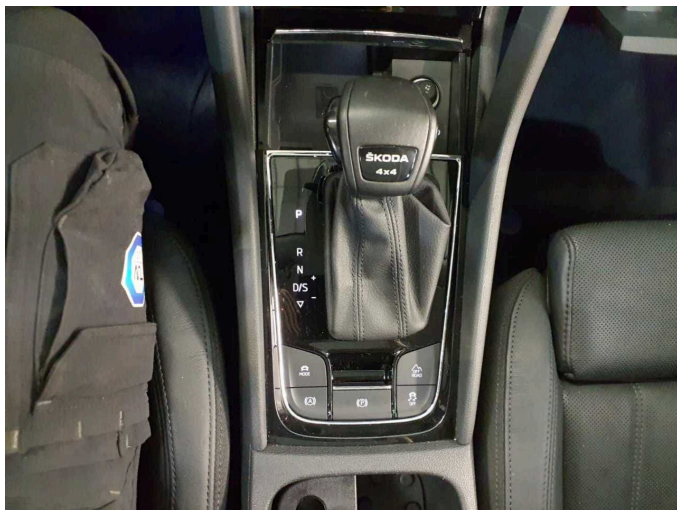


Figure 21: Misc.

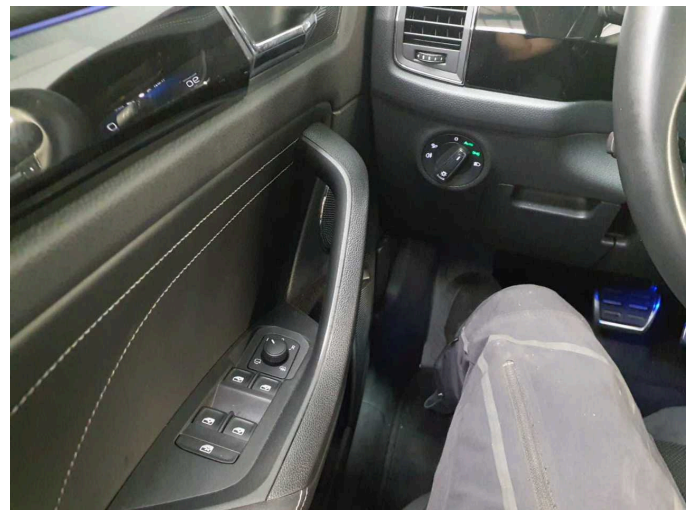


Figure 22: Misc.



Figure 23: Misc.

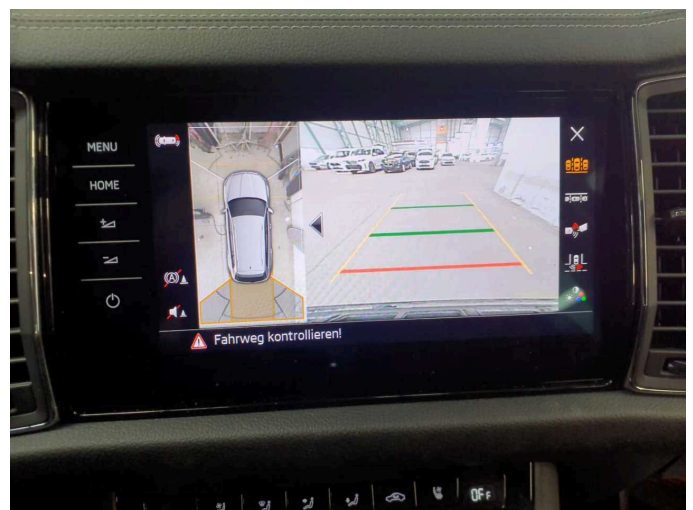


Figure 24: Misc.



Figure 25: Misc.



Figure 26: Misc.



Figure 27: Misc.



Figure 28: Misc.



Figure 29: Misc.



Figure 30: Misc.



Figure 31: Misc.



Damage 1: Wing mirror - right side: Cap - Scratch(es) - Smart repair



Damage 1: Wing mirror - right side: Cap - Scratch(es) - Smart repair



Damage 2: Door - rear left side: Door - Scratch(es) - Smart repair



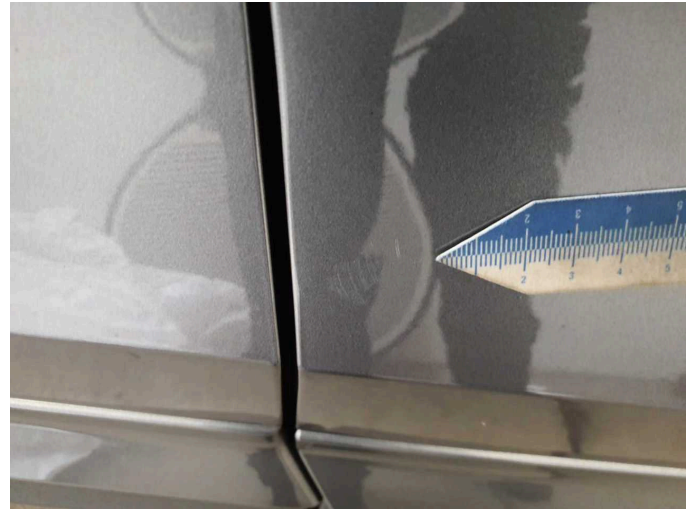
Damage 2: Door - rear left side: Door - Scratch(es) - Smart repair



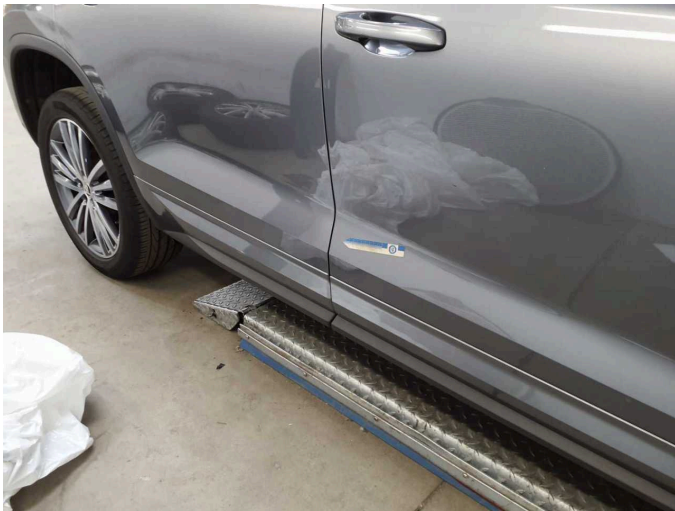
Damage 3: Door - rear right side: Door - Scratch(es) - Paint



Damage 3: Door - rear right side: Door - Scratch(es) - Paint



Damage 4: Door - front right side: Door - Dent / paintcoat damage - Repair and paint



Damage 4: Door - front right side: Door - Dent / paintcoat damage - Repair and paint



Damage 4: Door - front right side: Door - Dent / paintcoat damage - Repair and paint



Wartungshistorie

(gemäß Auftraggeber Informationen)

Fahrgestellnummer: TMBLN7NS3N8050188
Hersteller / Modell: SKODA SKODA Kodiaq 2.0 TDI 4x4 DSG L&K

Datum	KM-Stand	Beschreibung
07.06.2024	57.029	Bremsflüssigkeit; Bremsflüssigkeit ern; Getriebeöl ern/prüfen; Motoröl b. Wartung; Ölfilter ern; Ölwechsel - Hinterachse; Regelwartungsdienst; Wartung Sonstiges
26.05.2023	27.885	Motoröl b. Wartung; Regelwartungsdienst