



Expertise

Protocol number: 40860121
Order No. / Reference: 24907307
Inspection date: 30 Jul 2025

Manufacturer: Skoda	Model: Kodiaq 2.0 TDI 4x4 DSG Clever
VIN: TMBLN7NS0N8008982	



Vehicle details	
Manufacturer / Type / Model / Equipment	
Skoda Kodiaq 2.0 TDI 4x4 DSG Clever	
Vehicle Identification number	TMBLN7NS0N8008982
Mileage (Read)	121,444 km
First registration	16 Sept 2021
Number of holders	1
Power / Engine displacement	147 kw / 1,968 ccm
Fuel type / Cylinder	Diesel / 4
Gearbox / Number of gears	Automatic / 7
Type of drive	All-wheel drive
Type of vehicle	SUV
Colour / colour code	moonweiss-metallic (S9R)
Doors / Seats	5 / 5
Upholstery type	Cloth
Colour of upholstery	Black-Anthracite
Vehicle with smoke odor	no



Vehicle details

Maintenance booklet / proof	digital proof / complete	Next maintenance in	27,100 km
Last maintenance on / at	05/2025 at 118,449 km		
Key is / should be	2 / 2	FZG documents	ZB#2 (B) was available (copy), ZB#1 (S) was not available
		Letter No.	GD071419
Previous damage / Accident	None detectable	Repainting	Detectable
Inspection conditions	Sufficient	Lifting equipment / pit	yes
Test drive	Not performed	Engine function test	Performed
Manufacturer key number/ type code number	8004 / AVV 01480		
Emission standard	EURO6;WLTP;AP;PI/CI; M, N1 I	Fine dust sticker	
Permitted total weight	2,369 kg	Empty weight	

Tyres

Mounted tyres

#	Tyre size	Type of tyre	Manufacturer	Tread depth
1)	235/50 R19 99V	Summer tyres on Light alloy	Pirelli	5mm / 5mm
2)	235/50 R19 99V	Summer tyres on Light alloy	Pirelli	5mm / 5mm

Additional tyres

#	Tyre size	Type of tyre	Manufacturer	Tread depth
1)	235/55 R18 104H	Winter tyres on Light alloy	Pirelli	4mm / 4mm
2)	235/55 R18 104H	Winter tyres on Light alloy	Pirelli	6mm / 6mm

Replacement

Typ	Tyre size	Type of tyre	Manufacturer	Tread depth
N	145/85 R18 103M	Summer tyres on Steel	Sonstige	4 mm

Legend: Tread depth information for tires on the left is in the first place, for tires on the right is in the second place on the axle in the direction of travel

Equipment

Standard equipment

- Storage compartment on the left wheel house
- Storage compartments (ticket holder on the windshield, closed storage compartment on the driver's side, 4 roof grab handles, rear with coat hooks, coat hook on the B-pillar, high-visibility vest compartment in the front doors, glasses compartment in the roof lining, storage compartments in the door panels (front and rear) with bottle holders (1.5l front, 1l rear), cup holder in the front center console with "Easy-Open" bottle opening, storage pockets on the front seat backrests)
- Anti-lock braking system (ABS)
- Traveller Plus (DSG) assistance system (Adaptive Distance Assistant ACC (control range up to 210 km/h) - Lane Keeping (Lane Assist), Lane Change (Blind Spot Detection) and Rear Parking Assistant, Exit Warning - Adaptive Lane Guidance - Park Steering Assistant - Traffic Jam and Emergency Assist - Traffic Sign Recognition)
- Care Connect: Proactive Services (term 10 years) (Remote Access (term 1 year))
- decorative insert Clever
- diesel particulate filter
- tachometer
- eCall (automatic emergency call function in the event of an accident with airbag deployment)
- Electronic transverse differential lock (XDS+)
- Driving light assistant and rain sensor (tunnel light, coming and leaving home function)
- Front radar assistant including city emergency braking function with person detection
- Tinted windows
- Illuminated glove compartment
- Heated rear window
- Rear spoiler
- ISOFIX preparation on the outer rear seats (including top tether)
- Trunk cover, rollable and removable
- Headrests height adjustable front and rear
- LED ambient lighting (decorative strips in the door panels with selectable color climate, LED reading lights in the front, LED lighting for the make-up mirrors in the sun visors)
- LED rear lights
- Steering wheel: Heated sports leather steering wheel with multifunction buttons (including shift paddles and gear lever with leather elements)
- Rear center armrest with cup holders and through-loading option
- MSR (engine drag torque control)
- Fog lights with integrated LED daytime running lights
- Package: Family (Removable waste bin for the door panel - Sun blinds for the rear side windows - Door edge protection - Electric adjustment of the child safety lock)
- Storage compartments behind the wheel arch in the trunk
- Removable waste bin for the door panel
- Airbag, driver and front passenger (front passenger airbag can be switched off)
- Airbag, driver's knee airbag
- Airbag, head airbags
- Airbag, front side airbags
- Allergen filter
- All-wheel drive permanent
- Extended warranty for 3 years, max. 50,000 km
- Traction control (ASR)
- Electrically folding exterior mirrors including interior and exterior mirrors with automatic dimming
- Electrically adjustable and heated exterior mirrors with integrated side indicators
- Hill start assist
- Brake assist, hydraulic
- Cargo elements in the trunk
- Roof rails, black
- Anti-theft alarm system (with SAFE system, interior monitoring and tilt sensor)
- Third brake light (in the rear spoiler (LED))
- Electric tailgate operation including comfort opening
- Electronic parking brake including auto-hold function
- ESC Electronic Stabilization Control
- Electric windows front and rear (including anti-pinch protection and child safety lock)
- Floor mats front and rear
- Transmission: 7-speed dual-clutch transmission (DSG)
- Green tec (automatic start/stop including brake energy recovery)
- Rear window wiper Aero including windscreen washer system
- Kessy - keyless entry and start-stop system
- Climatronic air conditioning (2-zone) (fully automatic, separately adjustable for driver and front passenger including humidity sensor as well as odor and allergen filter and climate-controlled glove compartment)
- LED headlights with LED daytime running lights (including adaptive headlights (AFS): lighting system with fully automatic and situation-dependent light control (city, intercity, motorway and bad weather modes), cornering lights, automatic headlight range adjustment)
- Steering wheel: Leather steering wheel with multifunction buttons (height and length adjustable - gear lever with leather elements)
- Front center armrest, including storage compartment
- Multifunction display in the instrument cluster, color
- Net program in the trunk
- Parking Assist 3.0
- Parking sensors front & rear



- Radio: Amundsen infotainment system (Clever) (Dynamic radio navigation system Amundsen - Capacitive 8" color display - Voice control - Infotainment Online (1-year term))
- Radio accessories: Wireless SmartLink (Apple CarPlay)
- Tire mobility kit (tire repair spray including compressor)
- Wheels: 19" Aronia AERO Platinum alloy wheels (7Jx19 tires 235/50 R19 99V ET43)
- Heated windscreen washer nozzles
- Power steering, electromechanical
- Seats: Heated front and outer rear seats
- Seats: Driver and passenger seats height adjustable (including adjustable lumbar supports)
- Skoda Care Connect (SOS emergency call function (Emergency Call including automatic activation in the event of an accident with airbag deployment), mobility service (connection option for rapid assistance in the event of a breakdown), information service (connection option to the hotline for all questions about vehicle functions), free remote vehicle access for 1 year (Remote Access) with access to vehicle data and functions via smartphone)
- Sunset (rear window and rear side windows dark tinted)
- Variable fastening concept in the trunk (only for 5-seater)
- Lashing eyes in the trunk
- Immobiliser

Extra equipment

- deselecting the standard extended warranty
- High beam assistant
- Finish: pearl effect
- Package: Business Columbus (Clever) (Dynamic radio navigation system Columbus - Capacitive 9.2" color display - Digital instrument cluster (virtual cockpit) - 230 V socket and USB port (Type-C) - Luggage net partition - Infotainment Online (term 3 years))
- Auxiliary heater with remote control
- Phone: USB charging port (Type-C) on the interior mirror
- 360° area view camera including rear view camera
- Windshield, wirelessly heated
- Accessories: stainless steel footrest

- Upholstery: Cloth
- Radio accessories: 8 speakers
- Radio accessories: Digital radio reception DAB+
- Radio accessories: SmartLink (MirrorLink, Android Auto and Apple CarPlay)
- Tire pressure monitoring
- Rear seat backrest 60:40 split folding, longitudinally adjustable, backrest angle
- Headlights washer / wiper system
- Kodiaq seat belts (height-adjustable three-point seat belts in the front, with belt tensioners - three three-point seat belts in the rear - seat belt fastening signaling in the front and in the second row of seats)
- Skoda Infotainment Online (online map updates for navigation (only in conjunction with Columbus infotainment system) - display of weather data, news, headlines - petrol stations and parking space search and much more)
- Sun blind for the rear side windows
- 12V socket - in the center console and in the trunk
- Bumpers painted in body color (exterior mirrors and door handles painted in body color)
- Telephone: Comfort hands-free telephone system including phone box (with inductive charging function (connection via external antenna))
- Central locking with radio remote control

- Chassis: Adaptive chassis DCC including driving profile selection (including off-road assistant for 4x4 drive)
- Fatigue detection
- Electric panoramic sliding roof including sun blind (no glasses compartment on the roof lining)
- Radio accessories: CANTON sound system (9 speakers, 1 subwoofer, digital equalizer, 575W)
- Wheels: 18" steel spare wheel, space-saving (tires 145/85 R18 incl. jack, wheel wrench, loading floor cover replaces tire mobility kit)
- Variable loading floor in the trunk
- Accessories: USB adapter cable
- Accessories: Sports pedal set

Brief expert findings

Documents submitted	At the time of the inspection, the registration certificate Part 2 (letter) was available, but the registration certificate Part 1 (certificate) was not. (Copy)
VIN comparison	The vehicle identification number (VIN) was read and the undersigned verified that it matched the documents submitted during the inspection.
Inspection	The inspection conditions were sufficient for the assessment of the vehicle. Lifting equipment and a pit were available for examining the vehicle.
Test drive	No test drive/maneuvering was carried out during the inspection of the vehicle.
Engine function test	An engine test run was performed.



Value reducing factors

No.	Component group	Description
1	Wing mirror - right side	Cap - Scratch(es) - Smart repair
2	Side panel - rear right side	Side panel - Scratch(es) - Smart repair
3	Rear bumper	Rear bumper - Scratch(es) - Smart repair
4	Side panel - rear left side	Side panel - Scratch(es) - Smart repair

Wear and tear

No.	Component group	Description
1	Trim / covers	Boot lid - interior trim - Scratch(es) - No deduction
2	2nd wheel set	1 alloy rim - Scratched - No deduction
3	2nd wheel set	2 tyres (Profiltiefe; Kein Teil der Ausstattung) - Does not meet the leasing specifications - No deduction
4	Trim / covers	B-pillar - trim - interior, right side - Scratch(es) - No deduction
5	Rear bumper	Bumper with Parktronic - Scratch(es) - No deduction
6	Vehicle glazing	Windscreen - Stone chips - No deduction
7	Wing mirror - left side	Mirror housing - Scratch(es) - No deduction

The vehicle shows signs of wear commensurate with its age and use.

Missing parts

Description

Equipment - Charging cable (Usb Adapterkabel)

Repainting

No. Repainting

- | | |
|---|--|
| 1 | Side panel - rear left side, Professionally carried out, Invoice of repair done Non-existent |
|---|--|

Paint coat thickness measurement

Side panel - rear left side	312 µm
-----------------------------	--------

Order/Scope of order

The order was placed to prepare a sales report for the vehicle described. This includes the following:

- Description of core relevant information about the vehicle
- Documentation of equipment features
(Delivery by third-party service providers)
- Documentation of damage, defects, missing parts
- Documentation of previous damage, unrepaired previous damage, repainting
- a brief visual or functional inspection of the equipment details if possible.
(Functional tests of driver assistance systems are not included in the scope of services!)
- a photo documentation of the vehicle



Basis for the order

This product is based on the Alphabet Fuhrpark GmbH guidelines for vehicle returns and valuations. The expert makes the explicit findings in each individual case objectively within the framework of the specified standards based on his or her own expertise.

The vehicle inspection takes place in a disassembled state.

Damage or defects that can only be detected during disassembly/diagnosis work or through advanced knowledge remain within the scope of the prognosis risk. An extended risk exists for concealed defects caused by fraudulent deception and not identifiable by the expert.

Damage or defects resulting from normal use or wear and tear of the vehicle will be accepted according to the applicable standard.

There was no explicit identification or monetary consideration of the expected features within the product.

Features which in their nature and severity slightly exceed normal use but do not constitute unacceptable damage will be documented and identified under signs of use if necessary.

Damage or defects which, according to the underlying standard, can no longer be attributed to normal use or wear and tear are listed in the product under "Depreciating Factors".

Depending on the product specification, a monetary ID can be provided. If this takes place, the costs can be 100% d or pro rata depending on the vehicle's age and mileage.

Previous damages

Apparently, no repaired previous damage could be found on the vehicle.

Comments

- Der 2.Radsatz gehört nicht zur Ausstattung und wurde nicht in der Bewertung berücksichtigt.



Figure 1: Diagonal front (left)



Figure 2: Diagonal front (right)



Figure 3: Diagonal rear (left)



Figure 4: Diagonal rear (right)



Figure 5: Interior - front



Figure 6: Interior - rear



Figure 7: Instrument cluster



Figure 8: Instrument panel

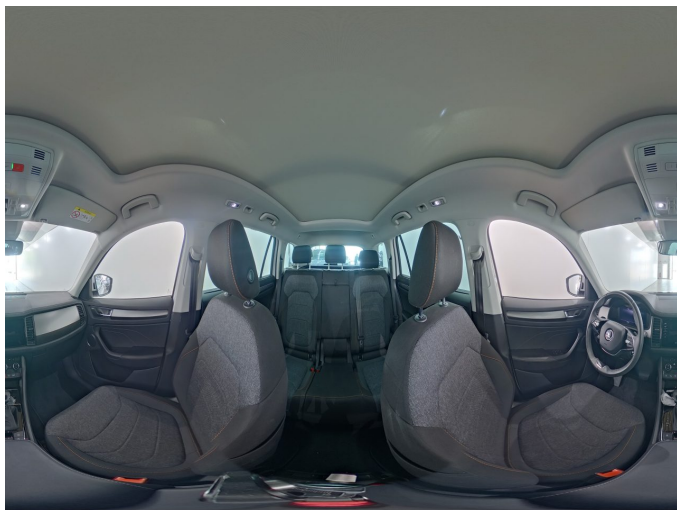


Figure 9: interior 360° view



Figure 10: Cargo area

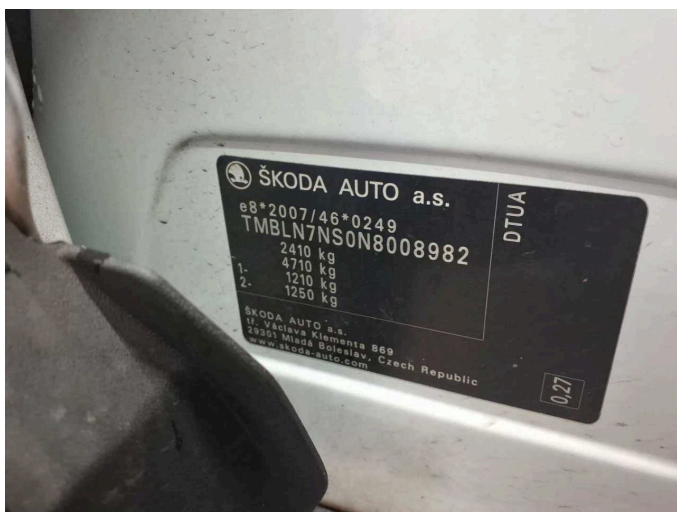


Figure 11: VIN



Figure 12: Mounted tyres



Figure 13: Documents

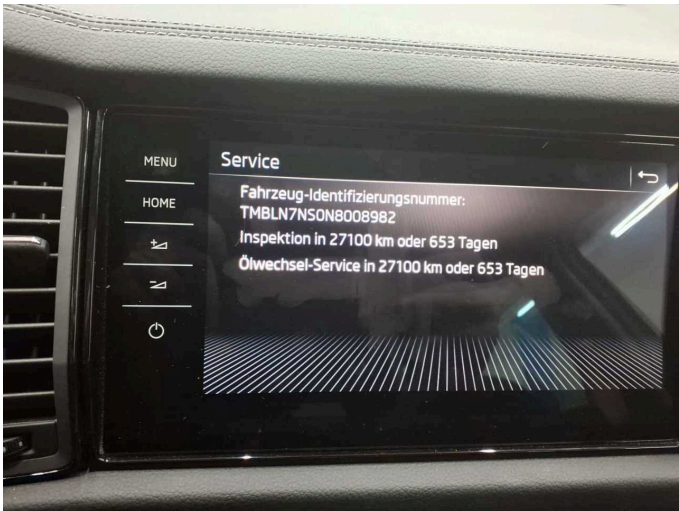


Figure 14: Documents

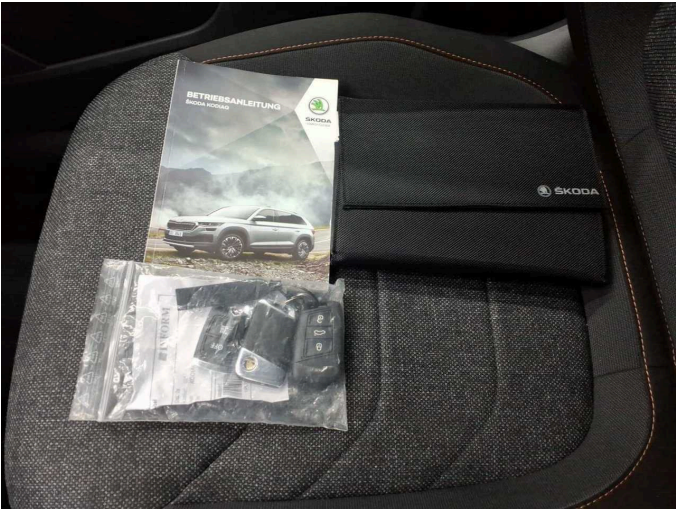


Figure 15: Documents



Figure 16: Additional tyres



Figure 17: Additional tyres

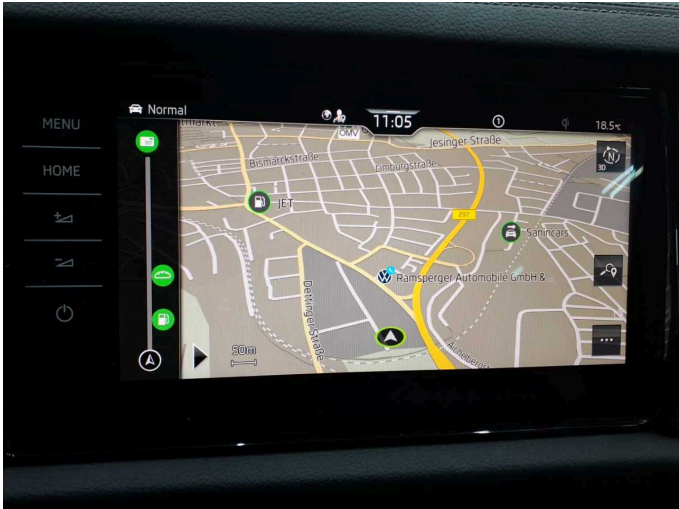


Figure 18: Navigation

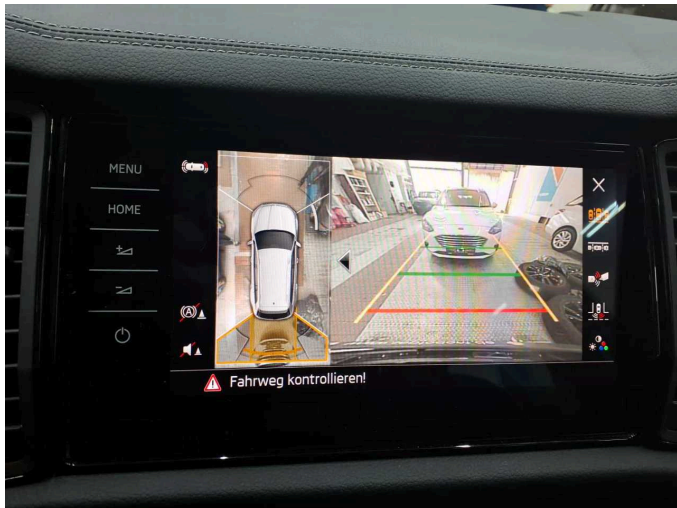


Figure 19: Misc.



Figure 20: Misc.



Figure 21: Misc.



Figure 22: Misc.



Figure 23: Misc.



Figure 24: Misc.



Figure 25: Misc.

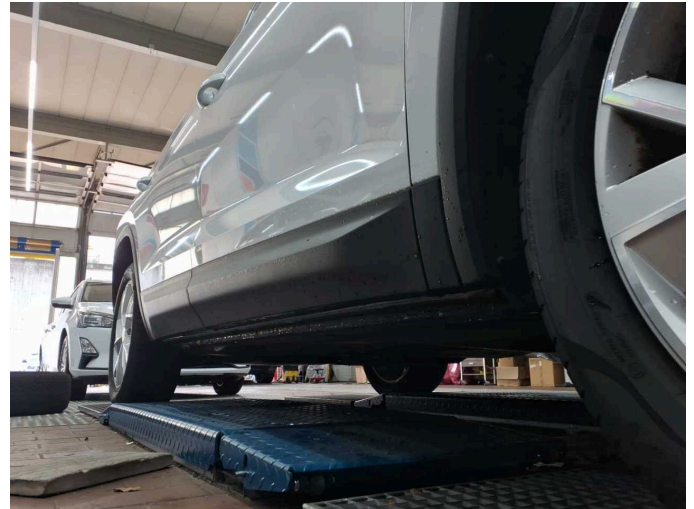


Figure 26: Misc.



Figure 27: Misc.



Figure 28: Misc.



Figure 29: Misc.



Figure 30: Misc.



Figure 31: Misc.



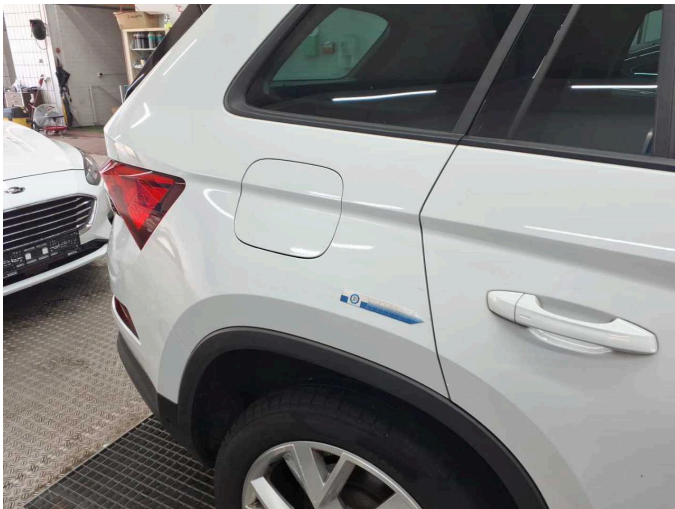
Damage 1: Wing mirror - right side: Cap - Scratch(es) - Smart repair



Damage 1: Wing mirror - right side: Cap - Scratch(es) - Smart repair



Damage 2: Side panel - rear right side: Side panel - Scratch(es) - Smart repair



Damage 2: Side panel - rear right side: Side panel - Scratch(es) - Smart repair



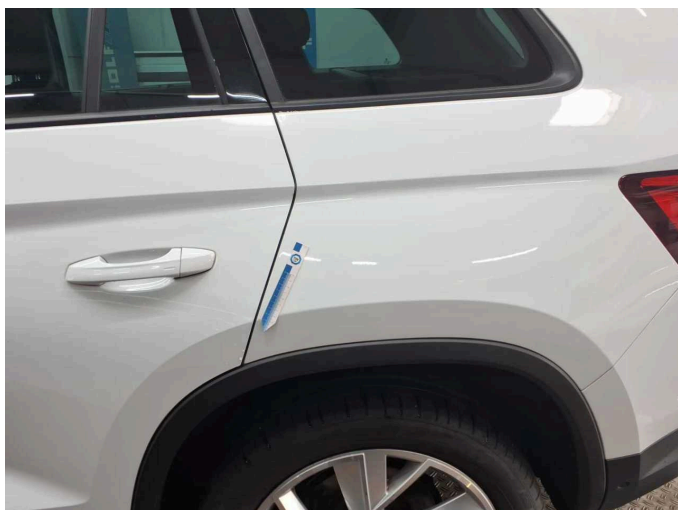
Damage 3: Rear bumper: Rear bumper - Scratch(es) - Smart repair



Damage 3: Rear bumper: Rear bumper - Scratch(es) - Smart repair



Damage 4: Side panel - rear left side: Side panel - Scratch(es) - Smart repair



Damage 4: Side panel - rear left side: Side panel - Scratch(es) - Smart repair



Repainting 1: Side panel - rear left side



Wartungshistorie

(gemäß Auftraggeber Informationen)

Fahrgestellnummer: TMBLN7NS0N8008982
Hersteller / Modell: SKODA SKODA Kodiaq 2.0 TDI 4x4 DSG Clever

Datum	KM-Stand	Beschreibung
16.05.2025	118.449	Bremse Sonstiges; Bremsklötze vorne; Bremsscheiben vorne; Getriebeöl ern/prüfen; Motoröl b. Wartung; Ölfilter ern; Ölwechsel - Hinterachse; Regelwartungsdienst; Reparatur Sonstiges; Systemtest/Eigendiagnose; Wartung Sonstiges
27.09.2024	98.085	AU
29.05.2024	88.010	Kraftstofffilter ern; Luftfiltereinsatz ern; Motoröl b. Wartung; Ölfilter ern; Regelwartungsdienst; Systemtest/Eigendiagnose; Wartung Sonstiges
09.01.2024	76.477	Batterie ern; Systemtest/Eigendiagnose
19.10.2023	68.718	Reparatur Sonstiges; Systemtest/Eigendiagnose
12.07.2023	61.894	Bremse Sonstiges; Bremsklötze hinten; Bremsklötze vorne; Bremsscheiben hinten; Bremsscheiben vorne
13.06.2023	58.930	Bremsflüssigkeit; Bremsflüssigkeit ern; Getriebeöl ern/prüfen; Motoröl b. Wartung; Ölfilter ern; Ölwechsel - Hinterachse; Regelwartungsdienst; Wartung Sonstiges
18.07.2022	28.838	Motoröl b. Wartung; Ölfilter ern; Regelwartungsdienst; Wartung Sonstiges