



Expertise

Protocol number: 41486708
Order No. / Reference: 25143311
Inspection date: 12 Sept 2025

Manufacturer: Skoda	Model: Kodiah 2.0 TDI 4x4 DSG L&K
VIN: TMBLJ7NS2M8060365	



Vehicle details	
Manufacturer / Type / Model / Equipment	
Skoda Kodiaq 2.0 TDI 4x4 DSG L&K	
Vehicle Identification number	TMBLJ7NS2M8060365
Mileage (Read)	124,829 km
First registration	13 Aug 2021
Number of holders	1
Next periodical technical inspection	08/2026
(Report not on hand)	
Power / Engine displacement	110 kw / 1,968 ccm
Fuel type / Cylinder	Diesel / 4
Gearbox / Number of gears	Automatic / 7
Type of drive	All-wheel drive
Type of vehicle	SUV
Colour / colour code	Lava-Blau Metallic (W5Q)
Doors / Seats	5 / 5
Upholstery type	Leather
Colour of upholstery	Black
Re/Import	no
Driving readiness	Roadworthy



Vehicle details

Maintenance booklet / proof	Non-existent	Next maintenance in	10,800 km
Key is / should be	2 / 2	FZG documents	ZB#2 (B) was available (copy), ZB#1 (S) was not available
		Letter No.	FZ806923
Previous damage / Accident	Detectable	Repainting	Detectable
Inspection conditions	sufficient	Lifting equipment / pit	yes
Test drive	Not performed	Engine function test	Performed
Driving readiness	Roadworthy		
Manufacturer key number/ type code number	8004 / ARW 00644		
Emission standard	EURO6;WLTP;AP;PI/CI; M, N1 I		
Permitted total weight	2,387 kg	Fine dust sticker	
		Empty weight	

Tyres

Mounted tyres

#	Tyre size	Type of tyre	Manufacturer	Tread depth
1)	235/50 R19 99V	Summer tyres on Light alloy	Pirelli	4mm / 4mm
2)	235/50 R19 99V	Summer tyres on Light alloy	Pirelli	6mm / 6mm

Replacement

Typ	Tyre size	Type of tyre	Manufacturer	Tread depth
N	145/85 R18	Summer tyres on Steel		4 mm

Legend: Tread depth information for tires on the left is in the first place, for tires on the right is in the second place on the axle in the direction of travel

Equipment

Standard equipment

- Storage compartment on the left wheel house
- Shelves
- Airbag, driver and passenger
- Airbag, driver's knee airbag
- Airbag, front side airbags
- All-wheel drive permanent
- Traction control (ASR)
- Electrically adjustable and heated exterior mirrors with integrated side indicators
- Brake assist, hydraulic
- Cargo elements in the trunk
- Decorative inlay Piano-Black L&K
- tachometer
- eCall
- Electronic parking brake including auto-hold function
- ESC Electronic Stabilization Control
- Electric windows front and rear
- Floor mats front and rear
- Rear footwell lighting
- Cruise control system
- Tinted windows
- Illuminated glove compartment
- Heated rear window
- Rear spoiler
- ISOFIX preparation on the outer rear seats
- Climatronic air conditioning (2 zones)
- Headrests height adjustable front and rear
- LED ambient lighting
- LED rear lights
- Rear center armrest with cup holders and through-loading option
- MSR (engine drag torque control)
- Parking sensors front & rear
- Progressive steering
- Radio accessories: 10 speakers
- Radio accessories: Digital radio reception DAB+
- Radio accessories: Wireless SmartLink
- Wheels: 18" steel spare wheel, space-saving
- Rear seat backrest 60:40 split folding, longitudinally adjustable, backrest angle
- Power steering, electromechanical
- Seats: Heated front seats
- Seats: Driver and passenger seats height adjustable
- Seats: Remote release of the rear seat backrests (2nd row) in the trunk
- Lane keeping (Lane Assist), lane change (Blind-Spot Detection) and rear traffic jam assistant
- Sunset
- Storage compartments behind the wheel arch in the trunk
- Adaptive Cruise Control ACC (control range up to 210 km/h)
- Airbag, head airbags
- Allergen filter
- Anti-lock braking system (ABS)
- Electrically folding exterior mirrors including interior and exterior mirrors with automatic dimming
- Hill start assist
- Care Connect: Proactive Services (10-year term)
- Roof rails, anodized
- diesel particulate filter
- Third brake light
- Electric tailgate operation
- Electronic transverse differential lock (XDS+)
- Headlight assistant and rain sensor
- Front radar assistant including city emergency braking function with person detection
- Front footwell lighting
- Transmission: 7-speed dual-clutch transmission (DSG)
- Green tec (automatic start/stop including brake energy recovery)
- Rear window wiper Aero including windscreen washer system
- Kessy - keyless entry and start-stop system
- Trunk cover, rollable and removable
- Paint finish: metallic
- LED headlights with LED daytime running lights
- Steering wheel: Leather steering wheel with multifunction buttons
- Front center armrest, including storage compartment
- Multifunction display in the instrument cluster, color
- Upholstery: L&K leather interior
- Radio: Bolero infotainment system
- Radio accessories: CANTON sound system
- Radio accessories: SmartLink
- Tire pressure monitoring
- Wheels: 19" Sirius alloy wheels, high-gloss
- Heated windscreen washer nozzles
- Headlights washer / wiper system
- Seat belts Kodiah
- Seats: Electrically adjustable front seats with memory function
- Skoda Care Connect
- Speed limiter
- 12V socket - in the center console and in the trunk
- Bumpers painted in body color
- Telephone: Comfort hands-free telephone system including phone box
- Immobiliser



- Variable fastening concept in the trunk (only for 5-seater)
- Lashing eyes in the trunk
- Central locking with radio remote control

Extra equipment

- Trailer coupling, swiveling
- Digital instrument cluster (virtual cockpit)
- Radio: Amundsen infotainment system
- Traveller Plus assistance system (DSG)
- Package: Business Columbus

Brief expert findings

Documents submitted	At the time of the inspection, the registration certificate Part 2 (letter) was available, but the registration certificate Part 1 (certificate) was not. (Copy)
VIN comparison	The vehicle identification number (VIN) was read from the vehicle and its conformity with the submitted documents was verified during the inspection by the undersigned.
Inspection	The inspection conditions were sufficient for the assessment of the vehicle. Lifting equipment and a pit were available for examining the vehicle.
Test drive	No test drive/maneuvering was carried out during the inspection of the vehicle.
Engine function test	An engine test run was performed.
Driving readiness	The vehicle was drivable at the time of inspection.

Value reducing factors

No.	Component group	Description
1	Misc.	Main inspection - No evidence - No deduction
2	Trim / covers	Floor mats - Broken / torn - Replace
3	Wing mirror - right side	Cap - Scratch(es) - Smart repair
4	Boot lid / rear door	Boot lid - Glued / labelled - De-glue / neutralise
5	Bonnet	Insulation lining - Broken / torn - Replace
6	Door - rear right side	Door - Scratch(es) - Smart repair
7	Front bumper	Front bumper - Scratch(es) - Smart repair
8	Trim / covers	Carpet - front left side (Verschließen) - Holes - Smart repair
9	Braking system	Brake discs and brake pads - front (Scheiben sind eingelaufen und Geringer Belag.) - Worn - Replace

Wear and tear

No.	Component group	Description
1	Vehicle glazing	Rear window - Scratch(es) - No deduction
2	Side panel - rear left side	Wheel well extension - Scratch(es) - No deduction
3	Door - front left side	Door - Scratch(es) - No deduction
4	Rear bumper	Rear bumper - Scratch(es) - No deduction
5	Braking system	Brake discs - rear - Corrosion - No deduction
6	Misc.	Inspection / maintenance - No evidence - No deduction

The vehicle shows signs of wear commensurate with its age and use.

Previous damages

No.	Previous damage	Extent of damage (Net)
1	Front, Side right, Provided by user / customer, from 15 May 2024	2.503,83 €
2	Rear, Provided by user / customer, from 30 Apr 2024	8.525,68 €



Repainting

No. Repainting

1 Boot lid / rear door, Mudguard - right side, Professionally carried out

Paint coat thickness measurement

Boot lid / rear door	228 µm	Mudguard - right side	163 µm
----------------------	--------	-----------------------	--------

Order/Scope of order

The order was placed to prepare a sales report for the vehicle described. This includes the following:

- Description of core relevant information about the vehicle
- Documentation of equipment features
(*Delivery by third-party service providers*)
- Documentation of damage, defects, missing parts
- Documentation of previous damage, unrepaired previous damage, repainting
- a brief visual or functional inspection of the equipment details if possible.
(*Functional tests of driver assistance systems are not included in the scope of services!*)
- a photo documentation of the vehicle

Basis for the order

This product is based on the Alphabet Fuhrpark GmbH guidelines for vehicle returns and valuations. The expert makes the explicit findings in each individual case objectively within the framework of the specified standards based on his or her own expertise.

The vehicle inspection takes place in a disassembled state.

Damage or defects that can only be detected during disassembly/diagnosis work or through advanced knowledge remain within the scope of the prognosis risk. An extended risk exists for concealed defects caused by fraudulent deception and not identifiable by the expert.

Damage or defects resulting from normal use or wear and tear of the vehicle will be accepted according to the applicable standard.

There was no explicit identification or monetary consideration of the expected features within the product.

Features which in their nature and severity slightly exceed normal use but do not constitute unacceptable damage will be documented and identified under signs of use if necessary.

Damage or defects which, according to the underlying standard, can no longer be attributed to normal use or wear and tear are listed in the product under "Depreciating Factors".

Depending on the product specification, a monetary ID can be provided. If this takes place, the costs can be 100% d or pro rata depending on the vehicle's age and mileage.

Previous damages

According to available information previous damages were repaired at the vehicle. Traces of repairs, which allow conclusions about the area of repair, were not recognizable during the inspection.



Figure 1: Diagonal front (left)



Figure 2: Diagonal front (right)



Figure 3: Diagonal rear (left)



Figure 4: Diagonal rear (right)



Figure 5: Interior - front



Figure 6: Interior - rear



Figure 7: Instrument cluster



Figure 8: Instrument panel



Figure 9: Interior 360° view



Figure 10: Cargo area



Figure 11: VIN



Figure 12: Mounted tyres



Figure 13: Documents

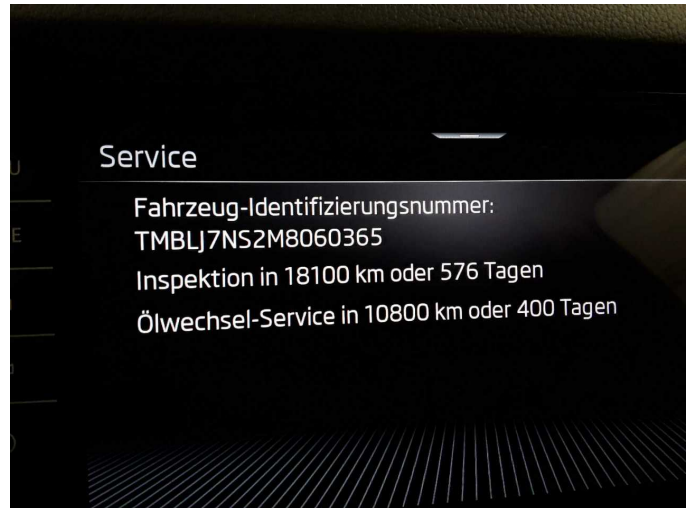


Figure 14: Documents



Figure 15: Documents

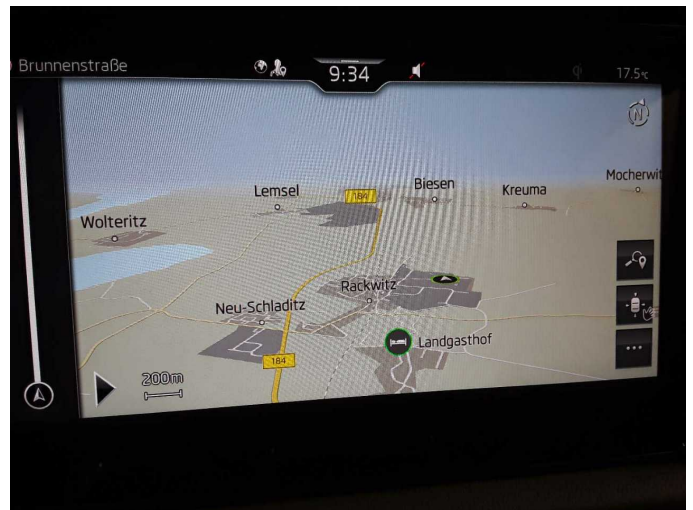


Figure 16: Navigation



Figure 17: Misc.



Figure 18: Misc.



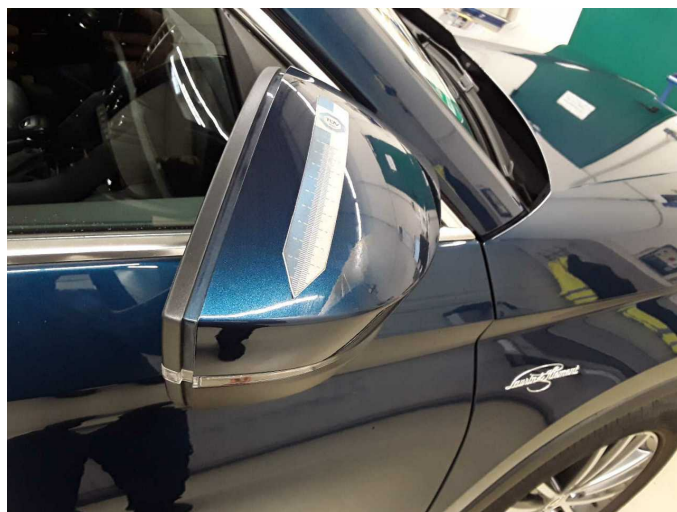
Damage 2: Trim / covers: Floor mats - Broken / torn - Replace



Damage 2: Trim / covers: Floor mats - Broken / torn - Replace



Damage 3: Wing mirror - right side: Cap - Scratch(es) - Smart repair



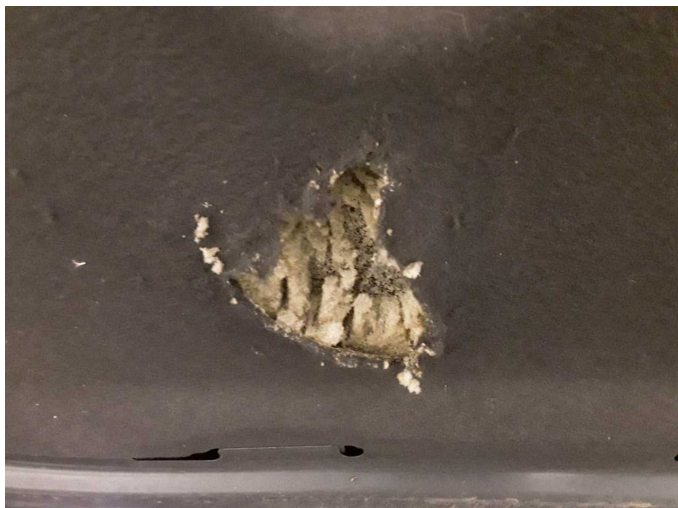
Damage 3: Wing mirror - right side: Cap - Scratch(es) - Smart repair



Damage 4: Boot lid / rear door: Boot lid - Glued / labelled - De-glue / neutralise



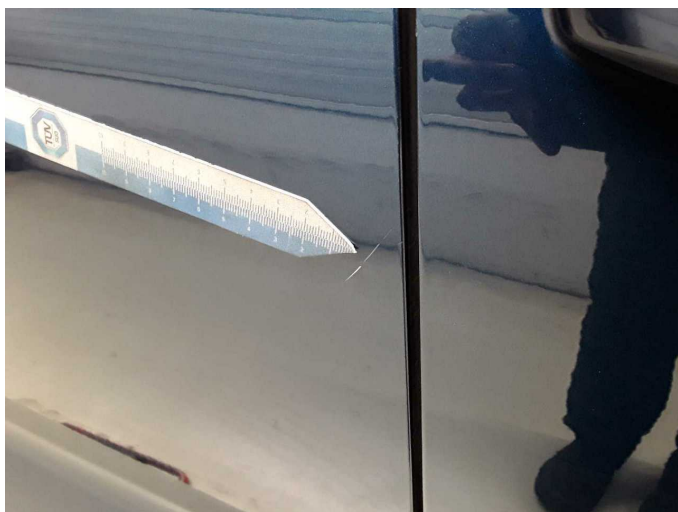
Damage 5: Bonnet: Insulation lining - Broken / torn - Replace



Damage 5: Bonnet: Insulation lining - Broken / torn - Replace



Damage 6: Door - rear right side: Door - Scratch(es) - Smart repair



Damage 6: Door - rear right side: Door - Scratch(es) - Smart repair



Damage 7: Front bumper: Front bumper - Scratch(es) - Smart repair



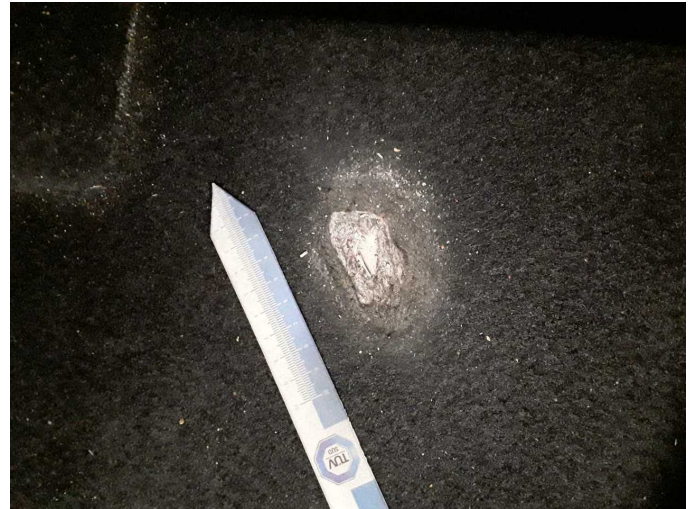
Damage 7: Front bumper: Front bumper - Scratch(es) - Smart repair



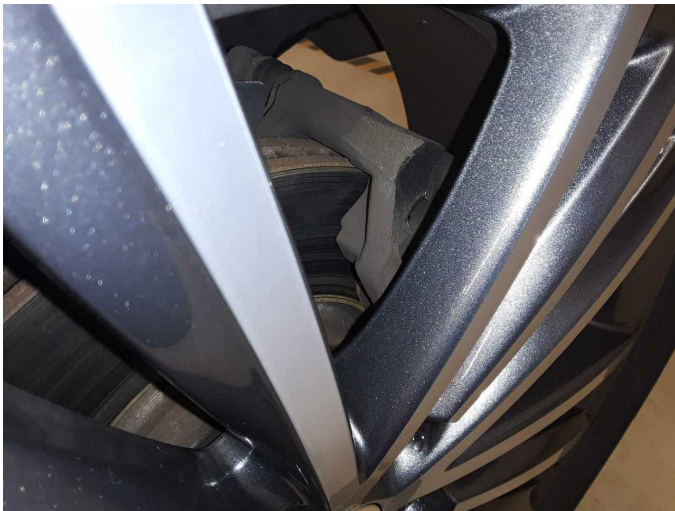
Damage 8: Trim / covers: Carpet - front left side (Verschleissen) - Holes - Smart repair



Damage 8: Trim / covers: Carpet - front left side (Verschleßen) - Holes - Smart repair



Damage 8: Trim / covers: Carpet - front left side (Verschleßen) - Holes - Smart repair



Damage 9: Braking system: Brake discs and brake pads - front (Scheiben sind eingelaufen und Geringer Belag.) - Worn - Replace



Damage 9: Braking system: Brake discs and brake pads - front (Scheiben sind eingelaufen und Geringer Belag.) - Worn - Replace



Damage 9: Braking system: Brake discs and brake pads - front (Scheiben sind eingelaufen und Geringer Belag.) - Worn - Replace



Damage 9: Braking system: Brake discs and brake pads - front (Scheiben sind eingelaufen und Geringer Belag.) - Worn - Replace



Damage 9: Braking system: Brake discs and brake pads - front
(Scheiben sind eingelaufen und Geringer Belag.) - Worn - Replace



Wear and tear 1: Vehicle glazing: Rear window - Scratch(es) - No deduction



Wear and tear 5: Braking system: Brake discs - rear - Corrosion - No deduction



Wear and tear 5: Braking system: Brake discs - rear - Corrosion - No deduction



Boot lid / rear door: 228 µm



Boot lid / rear door: 228 µm



Mudguard - right side: 163 μ m