



Expertise

Protocol number: 40873599  
Order No. / Reference: 25023681  
Inspection date: 1 Aug 2025

Manufacturer: Skoda  
VIN: TMBJW7NP5M7024678

Model: Superb Combi 1.4 TSI iV DSG Ambition



Vehicle details	
Manufacturer / Type / Model / Equipment	
Skoda Superb Combi 1.4 TSI iV DSG Ambition	
Vehicle Identification number	TMBJW7NP5M7024678
Mileage (Read)	115,798 km
First registration	17 Dec 2020
Number of holders	1
Next periodical technical inspection	11/2025
(Report not on hand)	
Power / Engine displacement	115 kw / 1,395 ccm
Fuel type / Cylinder	Hybr.B/E ext. edition / 4
Gearbox / Number of gears	Automatic / 6
Type of drive	Front drive
Type of vehicle	Station wagon
Colour / colour code	Quarz Grau Metallic (F7Y)
Doors / Seats	5 / 5
Upholstery type	Cloth
Colour of upholstery	Black
Re/Import	no
Driving readiness	Roadworthy



## Vehicle details

<b>Maintenance booklet / proof</b>	digital proof / complete	<b>Next maintenance in</b>	7,300 km
<b>Last maintenance on / at</b>	04/2025 at 108,449 km		
<b>Key is / should be</b>	3 / 3	<b>FZG documents</b>	ZB#2 (B) was available (copy), ZB#1 (S) was not available
		<b>Letter No.</b>	FX225258
<b>Previous damage / Accident</b>	Detectable	<b>Repainting</b>	Detectable
<b>Inspection conditions</b>	Sufficient	<b>Lifting equipment / pit</b>	yes
<b>Test drive</b>	Not performed	<b>Engine function test</b>	Performed
<b>Driving readiness</b>	Roadworthy		
<b>Manufacturer key number/ type code number</b>	8004 / AUJ 00063		
<b>Emission standard</b>	EURO6;WLTP;AM;PI/CI; M, N1 I	<b>Fine dust sticker</b>	
<b>Permitted total weight</b>	2,291 kg	<b>Empty weight</b>	

## Tyres

### Mounted tyres

#	Tyre size	Type of tyre	Manufacturer	Tread depth
1)	215/55 R17 94V	Summer tyres on Light alloy	Michelin	5mm / 5mm
2)	215/55 R17 94V	Summer tyres on Light alloy	Michelin	5mm / 5mm

### Additional tyres

#	Tyre size	Type of tyre	Manufacturer	Tread depth
1)	215/55 R17 98V	Winter tyres on Light alloy	Goodyear	6mm / 6mm
2)	215/55 R17 98V	Winter tyres on Light alloy	Goodyear	7mm / 7mm

### Replacement

Typ	Tyre size	Type of tyre	Manufacturer	Tread depth
	Tirefit	Expiration date 08/2024		

**Legend:** Tread depth information for tires on the left is in the first place, for tires on the right is in the second place on the axle in the direction of travel

## Equipment

### Standard equipment

- Storage compartments closed, behind the wheel arches in the trunk including cargo elements
- Airbag, driver's knee airbag
- Airbag, front side airbags
- Traction control (ASR)
- Exterior mirrors and door handles in body color
- Illuminated glove compartment
- Hydraulic brake assist (HBA)
- Roof rails, black
- tachometer
- Easy Start (start-stop button instead of ignition lock)
- Electronic transverse differential lock (XDS+)
- Headlight assistant and rain sensor
- Chassis: Adaptive chassis DCC
- Electric windows front and rear, including anti-pinch protection and child safety lock
- Cruise control including speed limiter
- Tinted windows
- Rear window wiper including windscreen washer system
- Trunk cover, roll-up and removable, semi-automatic
- Headrests height adjustable front and rear
- LED low beam
- Steering wheel: 2-spoke leather steering wheel with multifunction buttons
- Rear center armrest with cup holders and through-loading option
- Color multifunction display in the instrument cluster
- Multi-collision brake
- LED fog lights with integrated cornering light
- Upholstery: Cloth
- Radio accessories: Digital radio reception DAB+
- Radio accessories: Wireless SmartLink for Apple Car Play
- Tire mobility set
- Heated windscreen washer nozzles
- Seat belts Superb
- Seats: Height-adjustable front seats
- SKODA Care Connect
- Automatic start/stop system including brake energy recovery
- 12-V socket in the center console front and rear
- Chrome-plated elements
- Immobiliser
- Shelves
- Airbag, driver and switchable passenger airbag
- Airbag, head airbags
- Anti-lock braking system (ABS)
- Exterior mirrors electrically adjustable and heated
- Exterior mirrors, electrically folding
- Hill start assist
- Grey headliner
- Decorative inlay silver brushed
- Third brake light
- Electronic parking brake including auto-hold function
- Electronic Stabilization Control (ESC)
- Driving profile selection including personalizable key (Normal, Eco, Sport, Individual)
- Front radar assistant including city emergency braking function
- Transmission: 6-speed direct shift gearbox (DSG)
- Heated rear window
- ISOFIX preparation on the outer rear seats, including top tether
- Charging cable, Mode 2, Schuko, 10A
- LED rear lights
- Steering wheel: height and length adjustable
- Reading lights at the front and rear of the roof lining
- Front center armrest with storage compartment
- Engine drag torque control (MSR)
- Multifunction display in the instrument cluster
- Navigation: Dynamic navigation system Amundsen 8"
- Gasoline particulate filter
- Radio accessories: 2 USB-C ports in the center console
- Radio accessories: SmartLink+
- Tire pressure monitoring
- Wheels: 17" Drakon alloy wheels
- Power steering, electromechanical
- Seats: Adjustable lumbar supports in the front seats
- Seats: Rear seat backrest 60:40 split folding
- Sun visor on driver and passenger side with illuminated make-up mirror
- 12-V socket in the trunk
- Telephone: Comfort hands-free Bluetooth
- Lashing eyes in the trunk
- Central locking with radio remote control

### Extra equipment

- Trailer coupling, pivoting including trailer stabilization
- Electric panoramic sliding roof including sun blind (no glasses compartment on the roof lining)
- Kessy, keyless entry and start-stop system
- Paint finish: metallic
- Heated windshield
- Luggage net partition
- ISOFIX preparation on the front passenger seat
- Climatronic air conditioning (3-zone) (fully automatic, separately adjustable for driver, front passenger and rear)



- Charging cable for AC charging stations (Mode 3 charging cable, Type 2, 16A)
- Parking sensors front and rear
- Seats: Heated front seats
- Sun blind for the rear side windows
- Steering wheel: Heated steering wheel (2 spokes) (with shift paddles)
- Radio: CANTON sound system (11 speakers - 1 subwoofer - digital equalizer 610W)
- Sunset (rear window and rear side windows dark tinted)

## Brief expert findings

Documents submitted	At the time of the inspection, the registration certificate Part 2 (letter) was available, but the registration certificate Part 1 (certificate) was not. (Copy)
VIN comparison	The vehicle identification number (VIN) was read and the undersigned verified that it matched the documents submitted during the inspection.
Inspection	The inspection conditions were sufficient for the assessment of the vehicle. Lifting equipment and a pit were available for examining the vehicle.
Test drive	No test drive/maneuvering was carried out during the inspection of the vehicle.
Engine function test	An engine test run was performed.
Driving readiness	The vehicle was drivable at the time of inspection.

## Value reducing factors

No.	Component group	Description
1	Equipment	Tirefit filler - Expired - Replace
2	Trim / covers	Boot lid - interior trim - Scratch(es) - Loss in value
3	Tail light	Tail lamp - right side - Scratch(es) - Loss in value
4	Wing mirror - left side	Cap - Scratch(es) - Paint
5	Bonnet	Bonnet - dent(s) - Smart repair
6	Door - front right side	Door - Scratch(es) - Smart repair
7	Door - rear right side	Door (Zierleiste) - Scratch(es) - Smart repair
8	Door - rear left side	Door - Scratch(es) - Smart repair
9	Instrument panel	Air nozzle - centre (Hinten) - Damaged - Replace
10	Door - front left side	Door - Deformed - Repair and paint
11	Front bumper	Front bumper - Dent / paintcoat damage - Repair and paint
12	Rear bumper	Rear bumper - Scratch(es) - Paint
13	Side panel - rear left side	Side panel - Scratch(es) - Paint

## Wear and tear

No.	Component group	Description
1	Door - front left side	Strip - outer - dent(s) - No deduction
2	Vehicle glazing	Windscreen - Stone chips - No deduction
3	Side panel - rear right side	Side panel - Scratch(es) - No deduction
4	Boot lid / rear door	Boot lid - Dent / paintcoat damage - No deduction

The vehicle shows signs of wear commensurate with its age and use.

## Previous damages

No.	Previous damage	Extent of damage (Net)
1	Side right, Provided by user / customer, from 3 Mar 2021	516,04 €



## Repainting

### No. Repainting

1 Door - front right side

## Paint coat thickness measurement

Door - front right side 178 µm

## Order/Scope of order

The order was placed to prepare a sales report for the vehicle described. This includes the following:

- Description of core relevant information about the vehicle
- Documentation of equipment features  
(*Delivery by third-party service providers*)
- Documentation of damage, defects, missing parts
- Documentation of previous damage, unrepaired previous damage, repainting
- a brief visual or functional inspection of the equipment details if possible.  
(*Functional tests of driver assistance systems are not included in the scope of services!*)
- a photo documentation of the vehicle

## Basis for the order

This product is based on the Alphabet Fuhrpark GmbH guidelines for vehicle returns and valuations. The expert makes the explicit findings in each individual case objectively within the framework of the specified standards based on his or her own expertise.

The vehicle inspection takes place in a disassembled state.

Damage or defects that can only be detected during disassembly/diagnosis work or through advanced knowledge remain within the scope of the prognosis risk. An extended risk exists for concealed defects caused by fraudulent deception and not identifiable by the expert.

Damage or defects resulting from normal use or wear and tear of the vehicle will be accepted according to the applicable standard.

There was no explicit identification or monetary consideration of the expected features within the product.

Features which in their nature and severity slightly exceed normal use but do not constitute unacceptable damage will be documented and identified under signs of use if necessary.

Damage or defects which, according to the underlying standard, can no longer be attributed to normal use or wear and tear are listed in the product under "Depreciating Factors".

Depending on the product specification, a monetary ID can be provided. If this takes place, the costs can be 100% d or pro rata depending on the vehicle's age and mileage.

## Previous damages

According to available information previous damages were repaired at the vehicle. Traces of repairs, which allow conclusions about the area of repair, were not recognizable during the inspection.

## Comments

- Winterradsatz ist kein Bestandteil des Auslieferumfangs.





Figure 1: Diagonal front (left)



Figure 2: Diagonal front (right)



Figure 3: Diagonal rear (left)



Figure 4: Diagonal rear (right)



Figure 5: Interior - front



Figure 6: Interior - rear





Figure 7: Instrument cluster



Figure 8: Instrument panel



Figure 9: interior 360° view



Figure 10: Cargo area



Figure 11: VIN



Figure 12: Mounted tyres



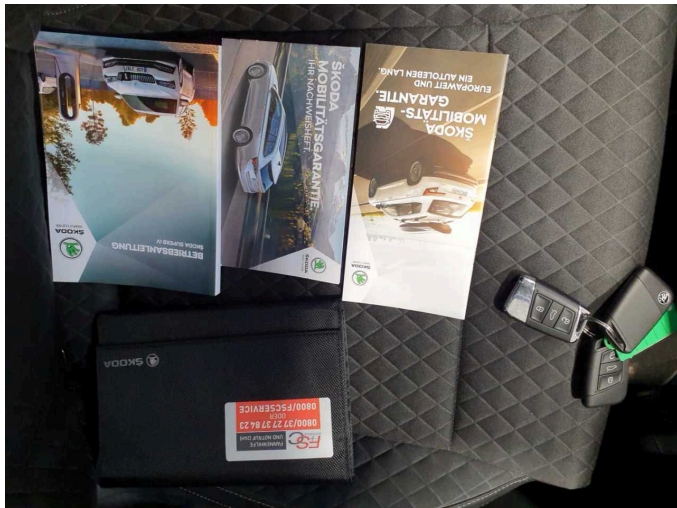


Figure 13: Documents



Figure 14: Additional tyres



Figure 15: Navigation



Figure 16: Misc.



Figure 17: Misc.



Figure 18: Misc.





Figure 19: Misc.



Figure 20: Misc.



Figure 21: Misc.



Figure 22: Misc.



Figure 23: Misc.



Figure 24: Misc.





**Damage 1:** Equipment: Tirefit filler - Expired - Replace



**Damage 2:** Trim / covers: Boot lid - interior trim - Scratch(es) - Loss in value



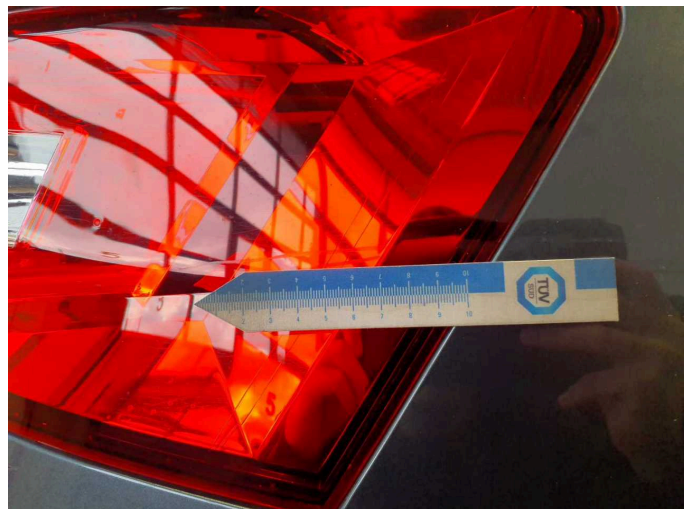
**Damage 2:** Trim / covers: Boot lid - interior trim - Scratch(es) - Loss in value



**Damage 2:** Trim / covers: Boot lid - interior trim - Scratch(es) - Loss in value



**Damage 2:** Trim / covers: Boot lid - interior trim - Scratch(es) - Loss in value

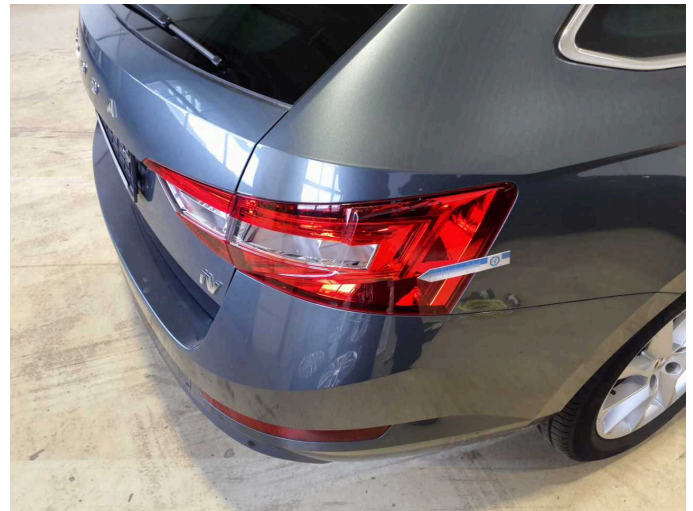


**Damage 3:** Tail light: Tail lamp - right side - Scratch(es) - Loss in value

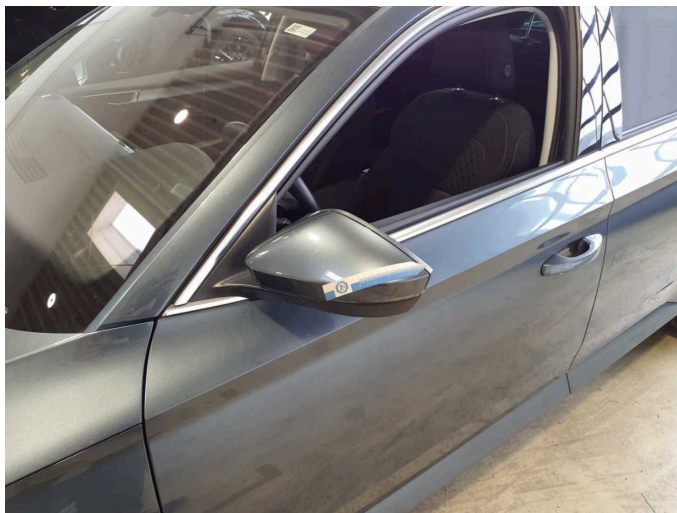




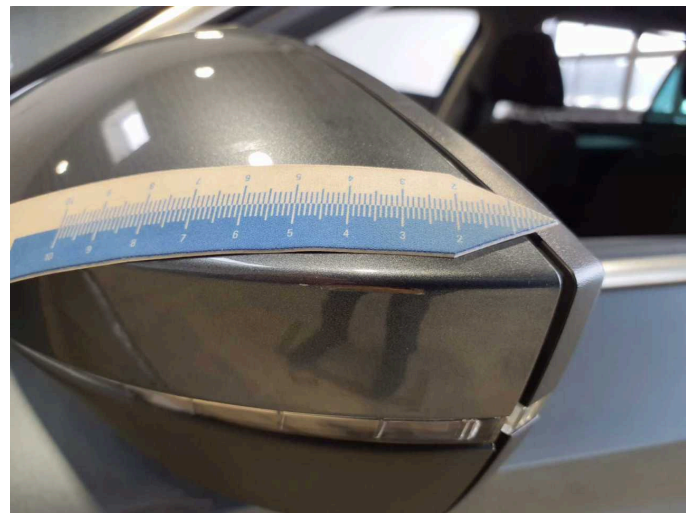
**Damage 3:** Tail light: Tail lamp - right side - Scratch(es) - Loss in value



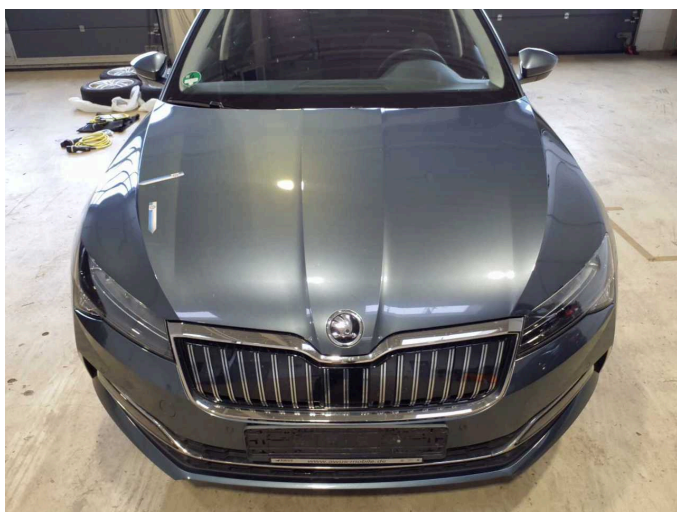
**Damage 3:** Tail light: Tail lamp - right side - Scratch(es) - Loss in value



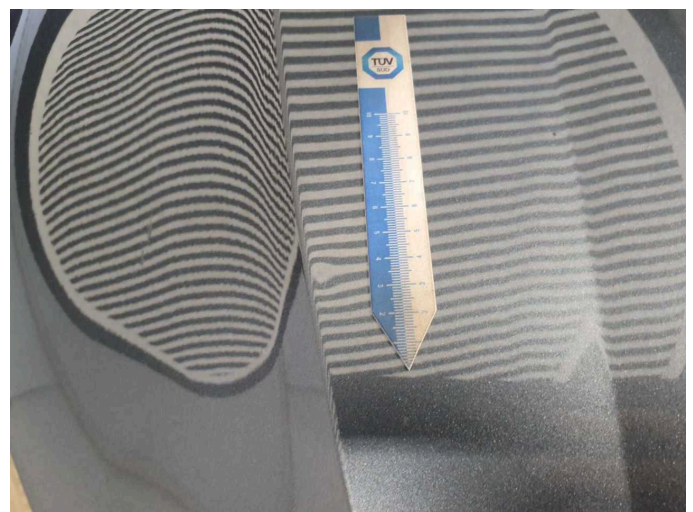
**Damage 4:** Wing mirror - left side: Cap - Scratch(es) - Paint



**Damage 4:** Wing mirror - left side: Cap - Scratch(es) - Paint



**Damage 5:** Bonnet: Bonnet - dent(s) - Smart repair

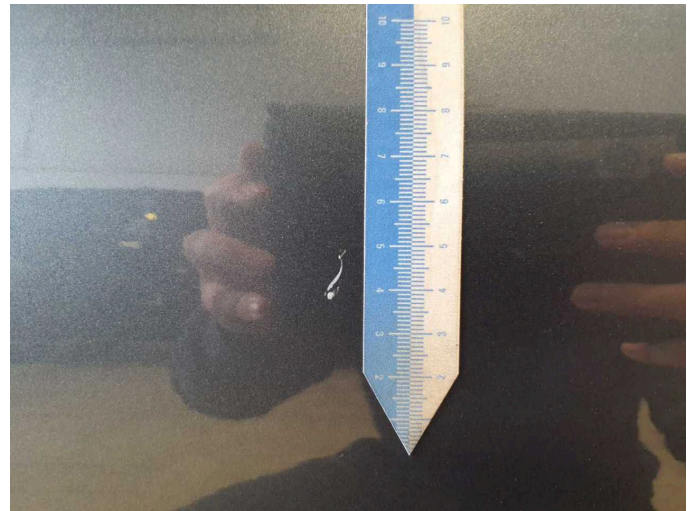


**Damage 5:** Bonnet: Bonnet - dent(s) - Smart repair





**Damage 5:** Bonnet: Bonnet - dent(s) - Smart repair



**Damage 6:** Door - front right side: Door - Scratch(es) - Smart repair



**Damage 6:** Door - front right side: Door - Scratch(es) - Smart repair



**Damage 7:** Door - rear right side: Door (Zierleiste) - Scratch(es) - Smart repair



**Damage 7:** Door - rear right side: Door (Zierleiste) - Scratch(es) - Smart repair

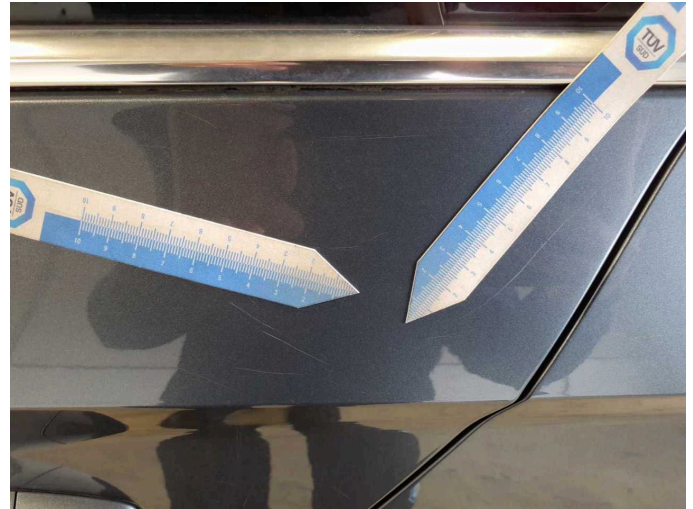


**Damage 8:** Door - rear left side: Door - Scratch(es) - Smart repair

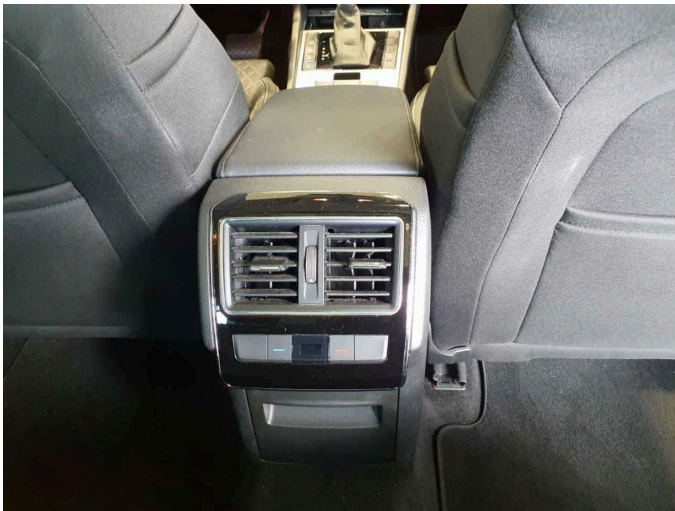




**Damage 8:** Door - rear left side: Door - Scratch(es) - Smart repair



**Damage 8:** Door - rear left side: Door - Scratch(es) - Smart repair



**Damage 9:** Instrument panel: Air nozzle - centre (Hinten) - Damaged - Replace



**Damage 9:** Instrument panel: Air nozzle - centre (Hinten) - Damaged - Replace



**Damage 10:** Door - front left side: Door - Deformed - Repair and paint



**Damage 10:** Door - front left side: Door - Deformed - Repair and paint





**Damage 11:** Front bumper: Front bumper - Dent / paintcoat damage - Repair and paint



**Damage 11:** Front bumper: Front bumper - Dent / paintcoat damage - Repair and paint



**Damage 11:** Front bumper: Front bumper - Dent / paintcoat damage - Repair and paint



**Damage 11:** Front bumper: Front bumper - Dent / paintcoat damage - Repair and paint



**Damage 11:** Front bumper: Front bumper - Dent / paintcoat damage - Repair and paint



**Damage 11:** Front bumper: Front bumper - Dent / paintcoat damage - Repair and paint

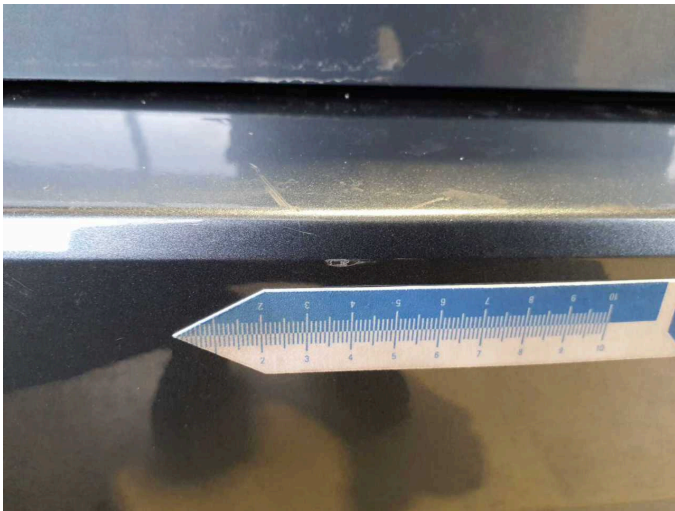




**Damage 12:** Rear bumper: Rear bumper - Scratch(es) - Paint



**Damage 12:** Rear bumper: Rear bumper - Scratch(es) - Paint



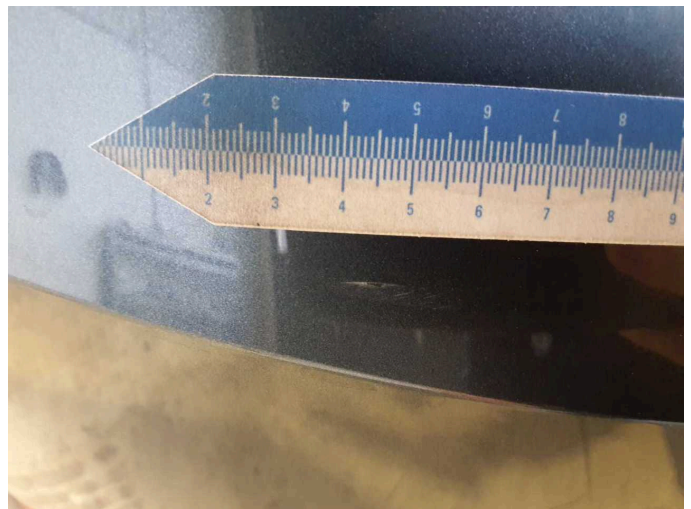
**Damage 12:** Rear bumper: Rear bumper - Scratch(es) - Paint



**Damage 12:** Rear bumper: Rear bumper - Scratch(es) - Paint



**Damage 12:** Rear bumper: Rear bumper - Scratch(es) - Paint



**Damage 12:** Rear bumper: Rear bumper - Scratch(es) - Paint





**Damage 13:** Side panel - rear left side: Side panel - Scratch(es) - Paint



**Damage 13:** Side panel - rear left side: Side panel - Scratch(es) - Paint



**Damage 13:** Side panel - rear left side: Side panel - Scratch(es) - Paint



**Damage 13:** Side panel - rear left side: Side panel - Scratch(es) - Paint



**Repainting 1:** Door - front right side



**Repainting 1:** Door - front right side





# Wartungshistorie

(gemäß Auftraggeber Informationen)

Fahrgestellnummer: TMBJW7NP5M7024678  
Hersteller / Modell: SKODA SKODA Superb Combi 1.4 TSI iV DSG Ambition

Datum	KM-Stand	Beschreibung
28.04.2025	108.449	Bremsflüssigkeit; Bremsflüssigkeit ern; Motoröl b. Wartung; Ölfilter ern; Ölwechsel; Wartung Sonstiges
28.10.2024	93.078	Luftfiltereinsatz ern; Motoröl b. Wartung; Ölfilter ern; Regelwartungsdienst; Wartung Sonstiges
30.04.2024	77.229	Motoröl b. Wartung; Ölfilter ern; Ölwechsel; Wartung Sonstiges
15.11.2023	63.473	AU; Getriebeöl ern/prüfen; Motoröl b. Wartung; Ölfilter ern; Regelwartungsdienst; Wartung Sonstiges; Zündkerzen ern
13.07.2023	54.890	Klimaanlage inst.; Reparatur Sonstiges; Systemtest/Eigendiagnose
31.03.2023	50.707	Bremsflüssigkeit; Bremsflüssigkeit ern; Motoröl b. Wartung; Ölfilter ern; Ölwechsel; Wartung Sonstiges
04.08.2022	33.247	Motoröl b. Wartung; Ölfilter ern; Regelwartungsdienst; Wartung Sonstiges
12.11.2021	14.952	Motoröl b. Wartung; Ölfilter ern; Ölwechsel; Wartung Sonstiges
22.10.2021	20.000	Systemtest/Eigendiagnose