



Expertise

Protocol number: 39876930  
Order No. / Reference: 24694561  
Inspection date: 23 May 2025

Manufacturer: Skoda  
VIN: TMBJR9NU4PC219269

Model: Karoq 1.5 TSI DSG Sportline



Vehicle details	
Manufacturer / Type / Model / Equipment	
Skoda Karoq 1.5 TSI DSG Sportline	
Vehicle Identification number	TMBJR9NU4PC219269
Mileage (Read)	94,888 km
First registration	11 Apr 2023
Number of holders	1
Power / Engine displacement	110 kw / 1,498 ccm
Fuel type / Cylinder	Petrol / 4
Gearbox / Number of gears	Automatic / 7
Type of drive	Front drive
Type of vehicle	Saloon car
Colour / colour code	Graphite Grau Metallic (F7C)
Doors / Seats	5 / 5
Upholstery type	Cloth
Colour of upholstery	Black



## Vehicle details

<b>Maintenance booklet / proof</b>	digital proof / complete	<b>Next maintenance in</b>	29,000 km
<b>Last maintenance on / at</b>	09/2024 at 64,483 km		
<b>Key is / should be</b>	3 / 3	<b>FZG documents</b>	ZB#2 (B) was available (copy), ZB#1 (S) was not available
		<b>Letter No.</b>	GQ563251
<b>Previous damage / Accident</b>	None detectable	<b>Repainting</b>	None detectable
<b>Inspection conditions</b>	Sufficient	<b>Lifting equipment / pit</b>	yes
<b>Test drive</b>	Not performed	<b>Engine function test</b>	Performed
<b>Manufacturer key number/ type code number</b>	8004 / ASO 03511		
<b>Emission standard</b>	EURO6;WLTP;AP;PI/CI; M, N1 I	<b>Fine dust sticker</b>	
<b>Permitted total weight</b>	1,930 kg	<b>Empty weight</b>	

## Tyres

### Mounted tyres

#	Tyre size	Type of tyre	Manufacturer	Tread depth
1)	215/50 R18 92W	Summer tyres on Light alloy	Continental	6mm / 6mm
2)	215/50 R18 92W	Summer tyres on Light alloy	Continental	5mm / 5mm

### Replacement

Typ	Tyre size	Type of tyre	Manufacturer	Tread depth
	Tirefit	Expiration date 01/2027		

**Legend:** Tread depth information for tires on the left is in the first place, for tires on the right is in the second place on the axle in the direction of travel



## Equipment

### Standard equipment

- Shelves
- Airbag, driver and passenger
- Airbag, head airbags
- Allergen filter
- Traction control (ASR)
- Electrically folding exterior mirrors including interior and exterior mirrors with automatic dimming
- Exterior mirrors in black, door handles painted in body color
- Hydraulic brake assist (HBA)
- Black headliner
- SPORTLINE decorative insert
- third vehicle key
- eCall
- Electronic transverse differential lock (XDS+)
- Headlight assistant and rain sensor
- Front radar assistant including city emergency braking function with person detection
- Cruise control system
- Green tec (automatic start/stop and brake energy recovery)
- Rear window wiper/washer system
- ISOFIX preparation on the outer rear seats
- Headrests firmly integrated at the front, height adjustable at the rear
- LED fog lights
- reading lights on the front roof lining
- Rear center armrest with cup holders and through-loading option
- Multi-collision brake
- Gasoline particulate filter
- Package: Light & Vision
- Package: Winter PLUS
- Upholstery: Cloth
- Radio accessories: Digital radio reception DAB+
- Radio accessories: Wireless SmartLink
- Tire mobility set
- Wheels: 18" Procyon Black high-sheen alloy wheels, Aero matt black
- Power steering, electromechanical
- Seats: Adjustable lumbar supports in the front seats
- Skoda Care Connect
- Speed limiter
- 12V socket - in the trunk
- bumpers partially painted in car color
- Immobiliser
- Aero wipers front
- Airbag, driver's knee airbag
- Airbag, front side airbags
- Anti-lock braking system (ABS)
- Dashboard in black / black, door trim in black
- Electrically adjustable and heated exterior mirrors with integrated side indicators
- Illuminated trunk
- Hill start assist
- Care Connect: Proactive Services (10-year term)
- Roof rails, black
- Digital Cockpit Plus (10")
- Easy Start (start-stop button)
- Electronic parking brake including auto-hold function
- ESC Electronic Stabilization Control
- Electric windows front and rear
- Floor mats
- Closed storage compartment on the dashboard
- Transmission: 7-speed dual-clutch transmission (DSG)
- Heated rear window
- interior mirror dimming, automatic
- trunk cover, fixed
- LED brake light in the rear spoiler
- LED taillights in crystal glass look
- Steering wheel: Heated sports leather steering wheel (DSG) with multifunction buttons
- Front center armrest, including storage compartment
- Engine drag torque control (MSR)
- Fatigue detection
- Package: Bolero infotainment package
- Package: Performance
- Rear parking sensors
- Radio accessories: 8 speakers
- Radio accessories: USB port in the center console (Type-C)
- Tire pressure monitoring
- 60:40 split folding rear seat backrest
- Gear shift recommendation display
- Seat belts
- Seats: Height-adjustable front seats
- Sun visor on driver and passenger side with make-up mirror (illuminated)
- 12V socket - in the center console
- Lashing eyes in the trunk
- Central locking with radio remote control

### Extra equipment



- |   |   |
|---|---|
| <ul style="list-style-type: none"> <li>• Climatronic air conditioning (3-zone) (fully automatic, separately adjustable for driver, front passenger and rear)</li> <li>• Package: Parking BASIC (front and rear parking sensors - rear view camera)</li> <li>• Package: Safety (Proactive Occupant Protection - Rear Side Airbags)</li> <li>• Package: Traveller BASIC (Predictive Adaptive Cruise Control ACC (control range up to 210 km/h) - Adaptive Lane Keeping Assist - Traffic Sign Recognition - Capacitive Steering Wheel with Hands-Off Detection - USB-C Charging Port on the Interior Mirror - Emergency and Traffic Jam Assist)</li> </ul> | <ul style="list-style-type: none"> <li>• Auxiliary heating</li> <li>• Electric tailgate operation with comfort opening</li> <li>• Luggage net partition</li> <li>• Package: Columbus Infotainment Package (Dynamic Columbus Radio Navigation System - Capacitive 9.2" Color Display - Digital Cockpit Plus - Wireless SmartLink - Voice Control - Phonebox with inductive charging function (connection via external antenna) - Infotainment Online (3-year term) - Mapcare Navigation Data Update)</li> <li>• Paint finish: metallic</li> <li>• Pivoting trailer coupling with electric release (including trailer stabilization)</li> </ul> |
|---|---|

### Brief expert findings

Documents submitted	At the time of the inspection, the registration certificate part 2 (letter) was available, but the registration certificate part 1 (certificate) was not available. (Copy)
VIN comparison	The vehicle identification number (VIN) was read and the undersigned verified that it matched the documents submitted during the inspection.
Inspection	The inspection conditions were sufficient for the assessment of the vehicle. Lifting equipment and a pit were available for examining the vehicle.
Test drive	No test drive/maneuvering was carried out during the inspection of the vehicle.
Engine function test	An engine test run was performed.

### Value reducing factors

No.	Component group	Description
1	Rear bumper	Rear bumper - Scratch(es) - Smart repair
2	Boot lid / rear door	Boot lid - Dent / paintcoat damage - Smart repair
3	Wheel / tyres	Alloy rim - rear right side - Scratch(es) - Loss in value

### Wear and tear

No.	Component group	Description
1	Mudguard - left side	Mudguard - left side - Stone chips - No deduction
2	Bonnet	Bonnet - Stone chips - No deduction
3	Door - front right side	Door edge - Scratch(es) - No deduction

The vehicle shows signs of wear commensurate with its age and use.

### Order/Scope of order

The order was placed to prepare a sales report for the vehicle described. This includes the following:

- Description of core relevant information about the vehicle
- Documentation of equipment features  
(Delivery by third-party service providers)
- Documentation of damage, defects, missing parts
- Documentation of previous damage, unrepaired previous damage, repainting
- a brief visual or functional inspection of the equipment details if possible.  
(Functional tests of driver assistance systems are not included in the scope of services!)
- a photo documentation of the vehicle



## Basis for the order

This product is based on the Alphabet Fuhrpark GmbH guidelines for vehicle returns and valuations. The expert makes the explicit findings in each individual case objectively within the framework of the specified standards based on his or her own expertise.

The vehicle inspection takes place in a disassembled state.

Damage or defects that can only be detected during disassembly/diagnosis work or through advanced knowledge remain within the scope of the prognosis risk. An extended risk exists for concealed defects caused by fraudulent deception and not identifiable by the expert.

Damage or defects resulting from normal use or wear and tear of the vehicle will be accepted according to the applicable standard.

There was no explicit identification or monetary consideration of the expected features within the product.

Features which in their nature and severity slightly exceed normal use but do not constitute unacceptable damage will be documented and identified under signs of use if necessary.

Damage or defects which, according to the underlying standard, can no longer be attributed to normal use or wear and tear are listed in the product under "Depreciating Factors".

Depending on the product specification, a monetary ID can be provided. If this takes place, the costs can be 100% d or pro rata depending on the vehicle's age and mileage.

## Previous damages

Apparently, no repaired previous damage could be found on the vehicle.





Figure 1: Diagonal front (left)



Figure 2: Diagonal front (right)



Figure 3: Diagonal rear (left)



Figure 4: Diagonal rear (right)



Figure 5: Interior - front



Figure 6: Interior - rear





Figure 7: Instrument cluster



Figure 8: Instrument panel



Figure 9: interior 360° view



Figure 10: Cargo area

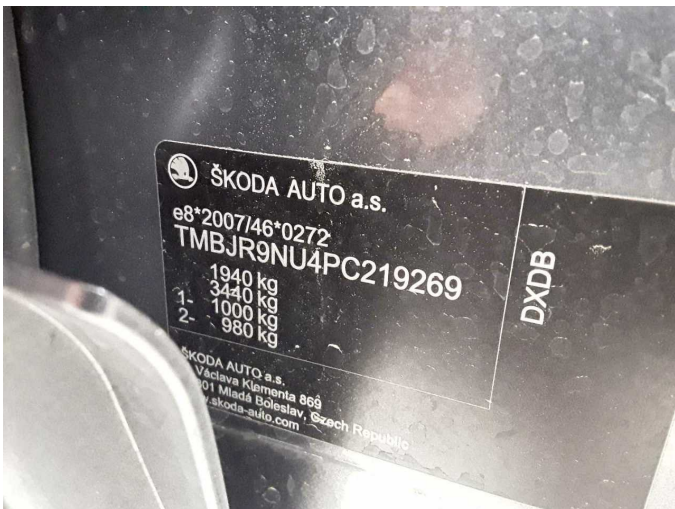


Figure 11: VIN



Figure 12: Mounted tyres



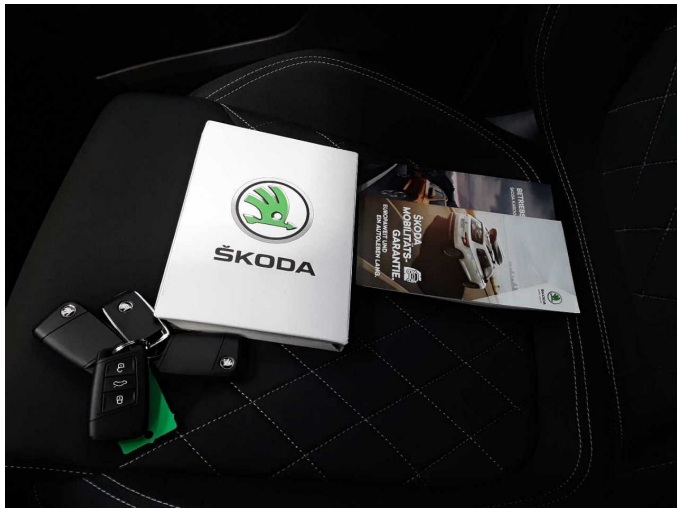


Figure 13: Documents



Figure 14: Documents

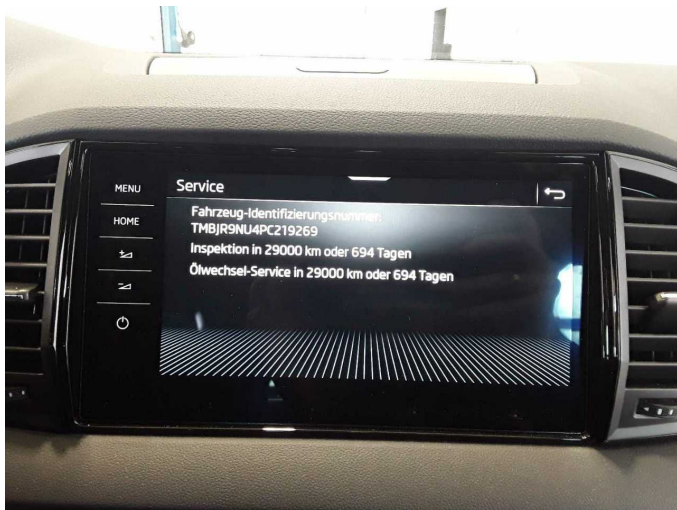


Figure 15: Documents



Figure 16: Navigation

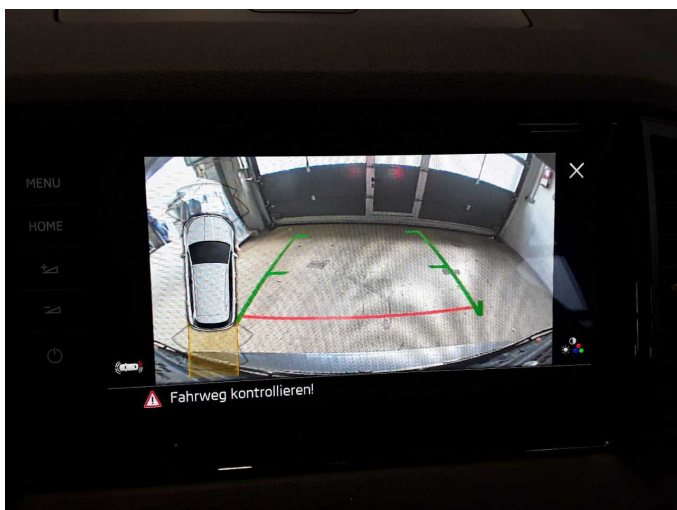


Figure 17: Misc.



Figure 18: Misc.





Figure 19: Misc.



Figure 20: Misc.

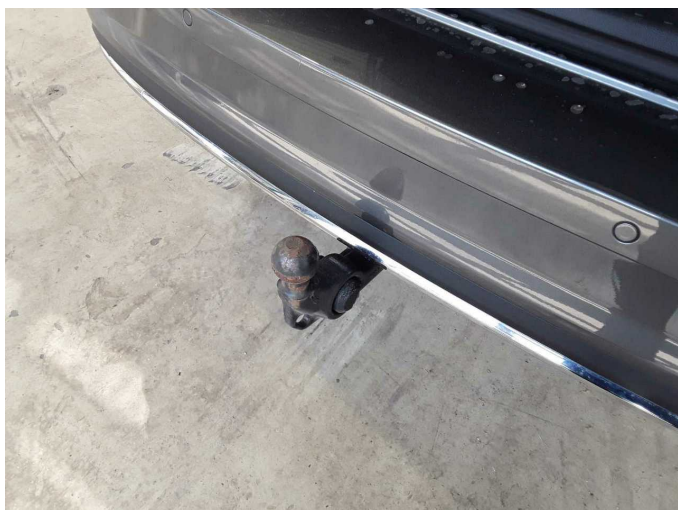


Figure 21: Misc.



Damage 1: Rear bumper: Rear bumper - Scratch(es) - Smart repair



Damage 1: Rear bumper: Rear bumper - Scratch(es) - Smart repair



Damage 2: Boot lid / rear door: Boot lid - Dent / paintcoat damage - Smart repair





**Damage 2:** Boot lid / rear door: Boot lid - Dent / paintcoat damage - Smart repair



**Damage 2:** Boot lid / rear door: Boot lid - Dent / paintcoat damage - Smart repair



**Damage 3:** Wheel / tyres: Alloy rim - rear right side - Scratch(es) - Loss in value



**Damage 3:** Wheel / tyres: Alloy rim - rear right side - Scratch(es) - Loss in value