



Expertise

Protocol number: 39455293
Order No. / Reference: 24633938
Inspection date: 4 Apr 2025

Manufacturer: Skoda
VIN: TMBJR7NXXMY112028

Model: Octavia Combi 1.5 TSI First Edition



Vehicle details	
Manufacturer / Type / Model / Equipment	
Skoda Octavia Combi 1.5 TSI First Edition	
Vehicle Identification number	TMBJR7NXXMY112028
Mileage (Read)	51,205 km
First registration	9 Mar 2021
Number of holders	1
Power / Engine displacement	110 kw / 1,498 ccm
Fuel type / Cylinder	Petrol / 4
Gearbox / Number of gears	Manual / 6
Type of drive	Front drive
Type of vehicle	Station wagon
Colour / colour code	Black-Magic Perleffekt
Doors / Seats	5 / 5
Upholstery type	Cloth
Colour of upholstery	Black-Grey



Vehicle details

Maintenance booklet / proof	digital proof / complete	Next maintenance in	29,500 km
Last maintenance on / at	03/2023 at 23,665 km		
Key is / should be	2 / 2	FZG documents	ZB#2 (B) was available (copy), ZB#1 (S) was not available
		Letter No.	GA503125
Previous damage / Accident	None detectable	Repainting	None detectable
Inspection conditions	Sufficient	Lifting equipment / pit	yes
Test drive	Not performed	Engine function test	Performed
Manufacturer key number/ type code number	8004 / AWI 00151		
Emission standard	EURO6;WLTP;AP;PI/CI; M, N1 I	Fine dust sticker	
Permitted total weight	1,900 kg	Empty weight	

Tyres

Mounted tyres

#	Tyre size	Type of tyre	Manufacturer	Tread depth
1)	205/55 R17 91V	Summer tyres on Light alloy	Michelin	6mm / 6mm
2)	205/55 R17 91V	Summer tyres on Light alloy	Michelin	6mm / 6mm

Replacement

Typ	Tyre size	Type of tyre	Manufacturer	Tread depth
	Tirefit	Expiration date 11/2024		

Legend: Tread depth information for tires on the left is in the first place, for tires on the right is in the second place on the axle in the direction of travel



Equipment

Standard equipment

- Hydraulic brake assist (HBA)
- Roof rails, anodized
- tachometer
- Electronic parking brake
- Electronic Stabilization Control (ESC)
- Driving profile selection
- Front radar assistant including city emergency braking function and person and cyclist detection
- Transmission: 6-speed manual transmission
- Green tec: Automatic start/stop system including brake energy recovery
- Rear window wiper including windscreen washer system
- ISOFIX preparations on the front passenger seat and the outer rear seats including top tether anchorage
- Climatronic air conditioning system (2 zones)
- Headrests (5) front and rear height adjustable
- LED rear lights
- Steering wheel: height and length adjustable
- Manual headlight range adjustment
- rear center armrest with through-loading option
- Engine drag torque control (MSR)
- Parking sensors front and rear
- Upholstery: Cloth
- Radio accessories: 8 speakers
- Radio accessories: voice control
- Tire pressure monitoring
- Power steering, electromechanical
- Safety lights in the front side doors
- Seats: Electrically adjustable front seats with memory function
- SKODA Care Connect
- Speed limiter
- Lane change and rear traffic assistant as well as exit warning
- Phone: SmartLink (MirrorLink, Apple CarPlay, Android Auto)
- Phone: Wireless SmartLink for Apple CarPlay
- Lashing eyes in the trunk
- Central locking including radio remote control integrated in the key and EASY Start
- Airbag, driver's knee airbag
- Airbag, front side airbags
- Traction control (ASR)
- Automatically dimming exterior mirror (driver's side)
- exterior mirrors with memory function
- Heated windscreen washer nozzles including 5l washer fluid reservoir
- Grey headliner
- Digital instrument cluster (Virtual Cockpit) 10.2"
- Third brake light
- Electronic transverse differential lock (XDS+)
- Driving light assistant
- Electric windows front and rear, including anti-pinch protection and child safety lock
- cruise control system
- Tinted windows
- Taillights in crystal glass look and animated indicators
- Heated rear window
- Interior mirror automatically dimming
- Kessy, keyless entry and start-stop system
- Electronic child lock
- Removable trunk cover
- LED fog lights
- LED headlights with LED daytime running lights
- Steering wheel: Leather steering wheel with multifunction buttons
- Front center armrest, including storage compartment
- Columbus navigation system with capacitive 10" color display
- Radio accessories: 2 USB-C ports at the front
- Radio accessories: Digital radio reception DAB+
- Rain sensor
- Tire mobility set
- Seat belts
- Seats: Heated front seats
- Seats: Height-adjustable driver and passenger seats
- Seats: Rear seat backrest 60:40 split folding
- SKODA Infotainment Online
- Lane keeping assistant (Lane Assist)
- 12-V socket in the trunk
- Telephone: Phonebox with inductive charging function (connection via the external antenna)
- Bluetooth hands-free phone system
- Immobiliser
- Shelves
- Airbag, driver and passenger
- Airbag, head airbags
- Anti-lock braking system (ABS)
- Dashboard center section with fabric cover
- Exterior mirrors electrically adjustable and heated
- Exterior mirrors, electrically folding
- hill start assist including auto-hold function

Extra equipment



- | | |
|---|--|
| <ul style="list-style-type: none"> • Finish: pearl effect • Wheels: 17" Pulsar AERO alloy wheels, black, high-sheen finish (7J x 17, ET 46 with 205/55 R17 tires) • Trailer coupling, pivoting including trailer stabilization and adapter | <ul style="list-style-type: none"> • Electric panoramic sunroof (no glasses compartment on the roof lining) • Sunset (rear window and rear side windows dark tinted) |
|---|--|

Brief expert findings

Documents submitted	At the time of the inspection, the registration certificate part 2 (letter) was available, but the registration certificate part 1 (certificate) was not available. (Copy)
VIN comparison	The vehicle identification number (VIN) was read and the undersigned verified that it matched the documents submitted during the inspection.
Inspection	The inspection conditions were sufficient to assess the vehicle. The inspection was carried out using the lighting conditions provided by the photo system included in the report. Lifting equipment and a pit were available for examining the vehicle.
Test drive	No test drive/maneuvering was carried out during the inspection of the vehicle.
Engine function test	An engine test run was performed.

Value reducing factors

No.	Component group	Description
1	Equipment	Tirefit filler - Expired - Replace
2	Door - rear left side	Door - Dent / paintcoat damage - Smart repair
3	Rear bumper	Rear bumper - Scratch(es) - Paint
4	Side panel - rear left side	Side panel (Delle geht über die Kante) - Dent / paintcoat damage - Repair and paint
5	Bonnet	Bonnet - dent(s) - Repair and paint

Order/Scope of order

The order was placed to prepare a sales report for the vehicle described. This includes the following:

- Description of core relevant information about the vehicle
- Documentation of equipment features
(*Delivery by third-party service providers*)
- Documentation of damage, defects, missing parts
- Documentation of previous damage, unrepaired previous damage, repainting
- a brief visual or functional inspection of the equipment details if possible.
(*Functional tests of driver assistance systems are not included in the scope of services!*)
- a photo documentation of the vehicle



Basis for the order

This product is based on the Alphabet Fuhrpark GmbH guidelines for vehicle returns and valuations. The expert makes the explicit findings in each individual case objectively within the framework of the specified standards based on his or her own expertise.

The vehicle inspection takes place in a disassembled state.

Damage or defects that can only be detected during disassembly/diagnosis work or through advanced knowledge remain within the scope of the prognosis risk. An extended risk exists for concealed defects caused by fraudulent deception and not identifiable by the expert.

Damage or defects resulting from normal use or wear and tear of the vehicle will be accepted according to the applicable standard.

There was no explicit identification or monetary consideration of the expected features within the product.

Features which in their nature and severity slightly exceed normal use but do not constitute unacceptable damage will be documented and identified under signs of use if necessary.

Damage or defects which, according to the underlying standard, can no longer be attributed to normal use or wear and tear are listed in the product under "Depreciating Factors".

Depending on the product specification, a monetary ID can be provided. If this takes place, the costs can be 100% d or pro rata depending on the vehicle's age and mileage.

Previous damages

Neither repaired nor non-repaired previous damage to the vehicle could be determined.



Figure 1: Diagonal front (left)



Figure 2: Diagonal front (right)



Figure 3: Diagonal rear (left)



Figure 4: Diagonal rear (right)



Figure 5: Interior - front



Figure 6: Interior - rear



Figure 7: Instrument cluster



Figure 8: Instrument panel



Figure 9: interior 360° view



Figure 10: Cargo area



Figure 11: VIN



Figure 12: Mounted tyres



Figure 13: Documents

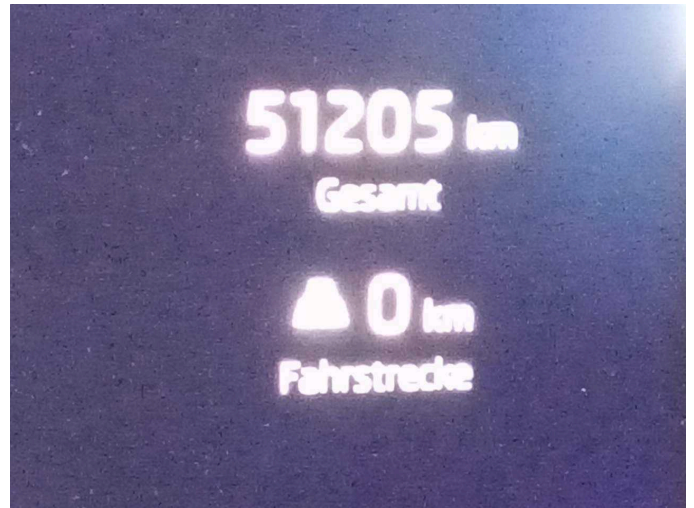


Figure 14: Documents

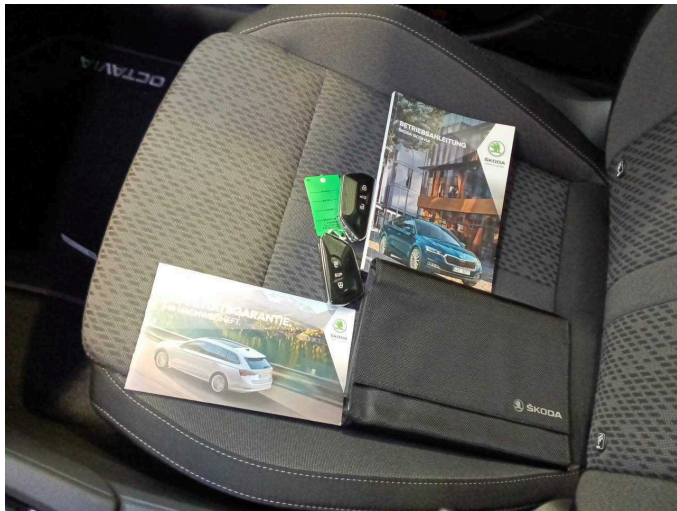


Figure 15: Documents



Figure 16: Navigation



Figure 17: Misc.

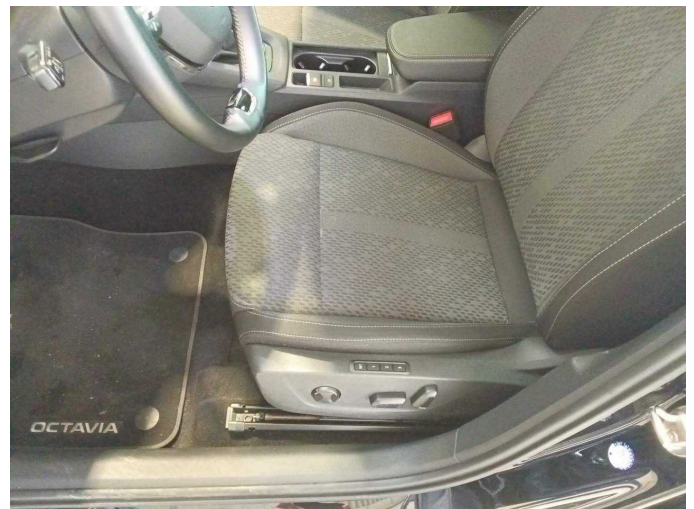


Figure 18: Misc.



Figure 19: Misc.



Figure 20: Misc.



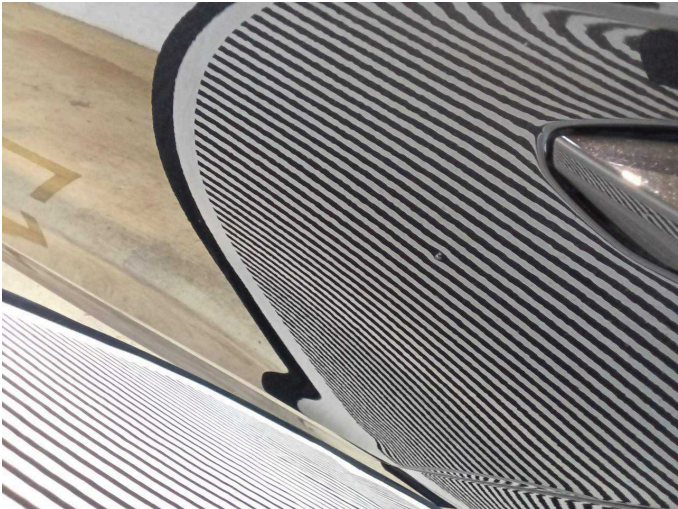
Figure 21: Misc.



Figure 22: Misc.



Damage 2: Door - rear left side: Door - Dent / paintcoat damage - Smart repair



Damage 2: Door - rear left side: Door - Dent / paintcoat damage - Smart repair



Damage 3: Rear bumper: Rear bumper - Scratch(es) - Paint



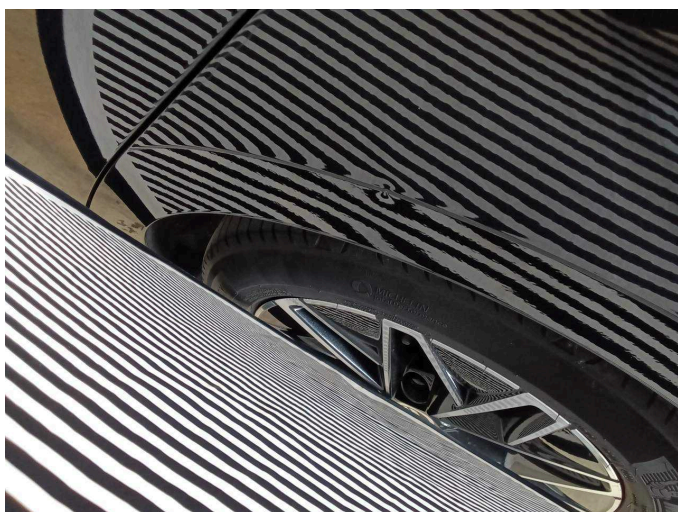
Damage 3: Rear bumper: Rear bumper - Scratch(es) - Paint



Damage 3: Rear bumper: Rear bumper - Scratch(es) - Paint



Damage 4: Side panel - rear left side: Side panel (Delle geht über die Kante) - Dent / paintcoat damage - Repair and paint



Damage 4: Side panel - rear left side: Side panel (Delle geht über die Kante) - Dent / paintcoat damage - Repair and paint



Damage 5: Bonnet: Bonnet - dent(s) - Repair and paint



Damage 5: Bonnet: Bonnet - dent(s) - Repair and paint