



Expertise

Protocol number: 41136209
Order No. / Reference: 25075227
Inspection date: 20 Aug 2025

Manufacturer: Skoda
VIN: TMBJR7NPXR7029020

Model: Superb Combi 2.0 TDI DSG Sportline



Vehicle details	
Manufacturer / Type / Model / Equipment	
Skoda Superb Combi 2.0 TDI DSG Sportline	
Vehicle Identification number	TMBJR7NPXR7029020
Mileage (Read)	39,274 km
First registration	20 Dec 2023
Number of holders	1
Power / Engine displacement	147 kw / 1,968 ccm
Fuel type / Cylinder	Diesel / 4
Gearbox / Number of gears	Automatic transmission / 7
Type of drive	Front drive
Type of vehicle	Station wagon
Colour / colour code	Velvet rot metallic
Doors / Seats	5 / 5
Upholstery type	Alcantara / Leather
Colour of upholstery	Black



Vehicle details

Maintenance booklet / proof	digital proof / complete	Next maintenance in	211,000 km
Last maintenance on / at	02/2025 at 30,363 km		
Key is / should be	3 / 3	FZG documents	ZB#2 (B) was available (copy), ZB#1 (S) was not available
		Letter No.	GY976723
Previous damage / Accident	None detectable	Repainting	None detectable
Inspection conditions	sufficient	Lifting equipment / pit	yes
Test drive	Not performed	Engine function test	Performed
Manufacturer key number/ type code number	8004 / AWB 00688		
Emission standard	EURO6;WLTP;AP;PI/CI; M, N1 I	Fine dust sticker	
Permitted total weight	2,237 kg	Empty weight	

Tyres

Mounted tyres

#	Tyre size	Type of tyre	Manufacturer	Tread depth
1)	235/40 R19 96W	Summer tyres on Light alloy	Bridgestone	5mm / 5mm
2)	235/40 R19 96W	Summer tyres on Light alloy	Bridgestone	7mm / 7mm

Additional tyres

#	Tyre size	Type of tyre	Manufacturer	Tread depth
1)	215/55 R17 98V	Winter tyres on Light alloy	Bridgestone	6mm / 6mm
2)	215/55 R17 98V	Winter tyres on Light alloy	Bridgestone	6mm / 6mm

Replacement

Typ	Tyre size	Type of tyre	Manufacturer	Tread depth
	Tirefit	Expiration date 09/2027		

Legend: Tread depth information for tires on the left is in the first place, for tires on the right is in the second place on the axle in the direction of travel

Equipment

Standard equipment

- Storage compartments closed, behind the wheel arches in the trunk including cargo elements
- Airbag, driver's knee airbag
- Airbag, front side airbags
- Traction control (ASR)
- Exterior mirrors electrically adjustable and heated
- Exterior mirrors with memory function
- Exterior mirrors, electrically folding
- Hill start assist
- Black headliner
- Dark Carbon decorative inlay
- Digital Cockpit Plus 10.2"
- Third brake light
- Stainless steel pedals
- Electronic parking brake including auto-hold function
- Electronic Stabilization Control (ESC)
- Chassis: Adaptive chassis DCC (10 mm lowering, adjustable damper settings)
- Front radar assistant including city emergency braking function
- Transmission: 7-speed direct shift gearbox (DSG)
- Heated rear window
- Rear spoiler
- ISOFIX preparation on the outer rear seats, including top tether
- Air Care Climatronic air conditioning system (2 zones)
- Headrests integrated in front seats, rear headrests height adjustable
- Metal loading sill protection
- LED ambient lighting
- Steering wheel: Heated steering wheel in sports design with multifunction buttons including shift paddles
- Matrix LED headlights
- Front center armrest with storage compartment
- Engine drag torque control (MSR)
- Multi-collision brake
- Rear parking sensors
- Radio: Bolero infotainment system
- Radio accessories: voice control
- Radio accessories: Wireless SmartLink
- Umbrella compartments in the front side doors
- Tire mobility set
- Heated windscreen washer nozzles
- Seat belts Superb
- Seats: Adjustable lumbar supports in the front seats
- Seats: Height-adjustable front seats
- Seats: Rear seat backrest 60:40 split folding
- SKODA Care Connect
- Automatic start/stop system including brake energy recovery
- 12-V socket in the center console front and rear
- Shelves
- Airbag, driver and switchable passenger airbag
- Airbag, head airbags
- Anti-lock braking system (ABS)
- Dashboard in black / black, door trim in black, headliner in black
- Exterior mirrors painted black, door handles in body color
- Illuminated glove compartment
- Hydraulic brake assist (HBA)
- Roof rails, painted black glossy
- Diesel particulate filter and SCR catalyst
- tachometer
- Dynamic Light Assistant (Masked Permanent High Beam)
- Electric tailgate opening
- Electronic transverse differential lock (XDS+)
- Driving light assistant and rain sensor (Easy Light Assist)
- Electric windows front and rear, including anti-pinch protection and child safety lock
- Footwell lighting front and rear
- Cruise control including speed limiter
- Tinted windows
- Rear window wiper including windscreen washer system
- Interior mirror automatically dimming
- Kessy, keyless entry and start-stop system
- Child safety locks for the rear doors and windows, electric
- Trunk cover, roll-up and removable, semi-automatic
- Radiator grille slats, frame, side strips and window surrounds in black
- LED reading lights at the front and rear of the roof lining
- Remote release of the rear seat backrests in the trunk
- Steering wheel: Height and length adjustable leather steering wheel
- Rear center armrest with cup holders and through-loading option
- Multifunctional storage under the trunk cover
- LED fog lights with integrated cornering light
- Upholstery: Alcantara trim in Sport Black
- Radio accessories: Digital radio reception DAB+
- Radio accessories: USB ports in the front (Type-C) and USB charging port (Type-A) in the center armrest
- Tire pressure monitoring
- Leather gearshift and handbrake levers
- Power steering, electromechanical
- Seats: Heated front seats
- Seats: Electrically adjustable front seats with memory function
- Seats: Front sports seats
- Sun visor on driver and passenger side with illuminated make-up mirror
- 12-V socket in the trunk
- Sunset (rear window and rear side windows dark tinted)
- Textile floor mats



- Phone: Bluetooth hands-free system
- Door sill plates
- Glazing: Acoustic glazing in the front side windows
- Immobiliser

- Chrome-plated elements
- Lashing eyes in the trunk
- Central locking with radio remote control

Extra equipment

- Electric panoramic sliding roof including sun blind (no glasses compartment on the roof lining)
- Package: Business Columbus (Columbus navigation system, voice control, Wi-Fi hotspot, wireless Smartlink for Apple CarPlay, capacitive 9.2" touchscreen in glass design, phone box, Traveller assistance system (traffic sign recognition, predictive lane departure warning (ACC), adaptive lane departure warning, emergency and traffic jam assistance), 230 V socket and 3 USB ports, tablet holder, Infotainment Online (3-year subscription))
- Progressive steering (adjustment of the steering angle depending on the speed)
- Seats: Manual seat length adjustment for the electric front seats
- Paint finish: metallic
- Package: Assistance Plus (Lane Change Assistant - Area View - Trailer Maneuvering Assistant & Park Steering Assistant - Trailer Hitch - (Active Tire Pressure Monitoring System) - Fatigue Detection)
- Package: Comfort Plus (Combi) (3-zone Climatronic - heated front and rear seats - Kessy - 3rd vehicle key - convenient tailgate opening - heated steering wheel (with shift paddles) - sunblinds for the rear side windows)
- Package: Transport (Combi) (trunk net - variable loading floor - luggage net partition)
- Wheels: 19" Supernova alloy wheels, black/polished (8J x 19" ET 44 with 235/40 R19 tires)
- Auxiliary heater with radio remote control

Brief expert findings

Documents submitted	At the time of the inspection, the registration certificate Part 2 (letter) was available, but the registration certificate Part 1 (certificate) was not. (Copy)
VIN comparison	The vehicle identification number (VIN) was read from the vehicle and its conformity with the submitted documents was verified during the inspection by the undersigned.
Inspection	The inspection conditions were sufficient for the assessment of the vehicle. Lifting equipment and a pit were available for examining the vehicle.
Test drive	No test drive/maneuvering was carried out during the inspection of the vehicle.
Engine function test	An engine test run was performed.

Value reducing factors

No.	Component group	Description
1	Body	Body - Glued / labelled - De-glue / neutralise
2	Rear bumper	Rear bumper - Scratch(es) - Smart repair
3	Side panel - rear right side	Side panel - Dent / paintcoat damage - Repair and paint

Wear and tear

No.	Component group	Description
1	Front bumper	Front bumper - Stone chips - No deduction
2	Door - rear right side	Door - Scratch(es) - No deduction
3	Vehicle glazing	Windscreen - Stone chips - No deduction

The vehicle shows signs of wear commensurate with its age and use.



Order/Scope of order

The order was placed to prepare a sales report for the vehicle described. This includes the following:

- Description of core relevant information about the vehicle
- Documentation of equipment features
(*Delivery by third-party service providers*)
- Documentation of damage, defects, missing parts
- Documentation of previous damage, unrepaired previous damage, repainting
- a brief visual or functional inspection of the equipment details if possible.
(*Functional tests of driver assistance systems are not included in the scope of services!*)
- a photo documentation of the vehicle

Basis for the order

This product is based on the Alphabet Fuhrpark GmbH guidelines for vehicle returns and valuations. The expert makes the explicit findings in each individual case objectively within the framework of the specified standards based on his or her own expertise.

The vehicle inspection takes place in a disassembled state.

Damage or defects that can only be detected during disassembly/diagnosis work or through advanced knowledge remain within the scope of the prognosis risk. An extended risk exists for concealed defects caused by fraudulent deception and not identifiable by the expert.

Damage or defects resulting from normal use or wear and tear of the vehicle will be accepted according to the applicable standard.

There was no explicit identification or monetary consideration of the expected features within the product.

Features which in their nature and severity slightly exceed normal use but do not constitute unacceptable damage will be documented and identified under signs of use if necessary.

Damage or defects which, according to the underlying standard, can no longer be attributed to normal use or wear and tear are listed in the product under "Depreciating Factors".

Depending on the product specification, a monetary ID can be provided. If this takes place, the costs can be 100% d or pro rata depending on the vehicle's age and mileage.

Previous damages

Apparently, no repaired previous damage could be found on the vehicle.

Comments

-Das Fahrzeug befand sich zum Besichtigungszeitpunkt in beschädigten, nicht demontierten Zustand. Schadenausweitung möglich, Zusatzkosten können entstehen.

Der Winterradsatz ist nicht Bestandteil der vorliegenden Fahrzeugausstattung.



Figure 1: Diagonal front (left)



Figure 2: Diagonal front (right)



Figure 3: Diagonal rear (left)



Figure 4: Diagonal rear (right)



Figure 5: Interior - front



Figure 6: Interior - rear



Figure 7: Instrument cluster



Figure 8: Instrument panel



Figure 9: interior 360° view ([Online link](#))



Figure 10: Cargo area



Figure 11: VIN



Figure 12: Mounted tyres

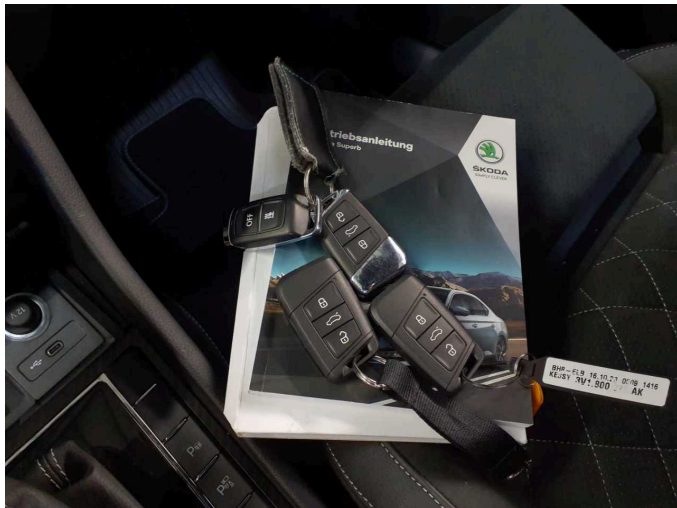


Figure 13: Documents



Figure 14: Documents



Figure 15: Additional tyres



Figure 16: Navigation



Figure 17: Misc.



Figure 18: Misc.



Figure 19: Misc.

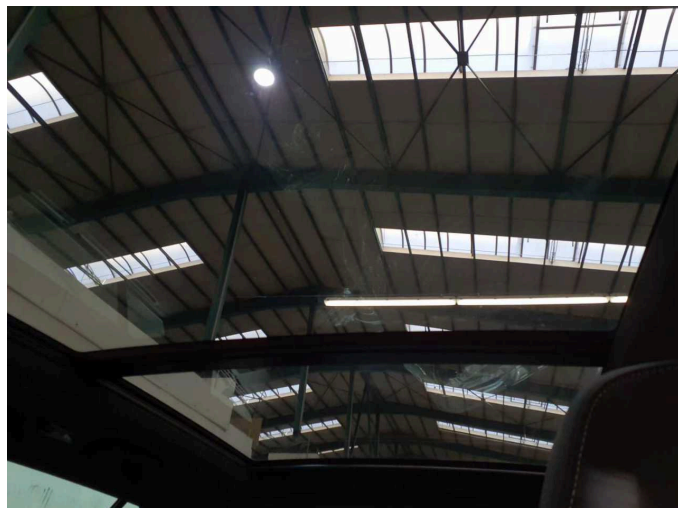


Figure 20: Misc.



Figure 21: Misc.

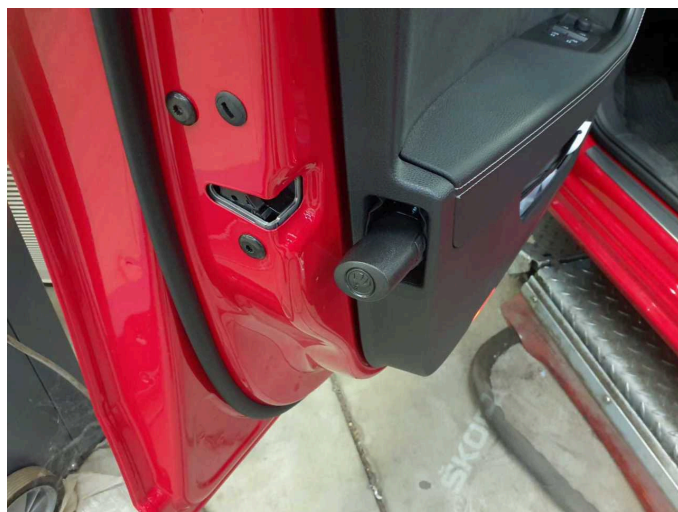


Figure 22: Misc.

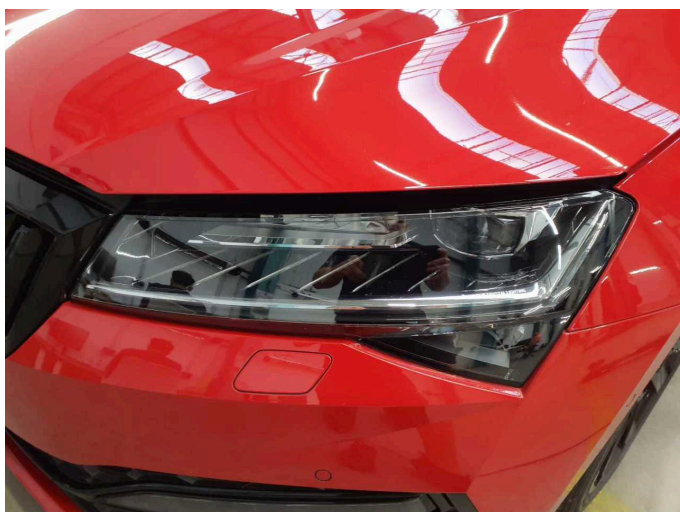


Figure 23: Misc.



Figure 24: Misc.

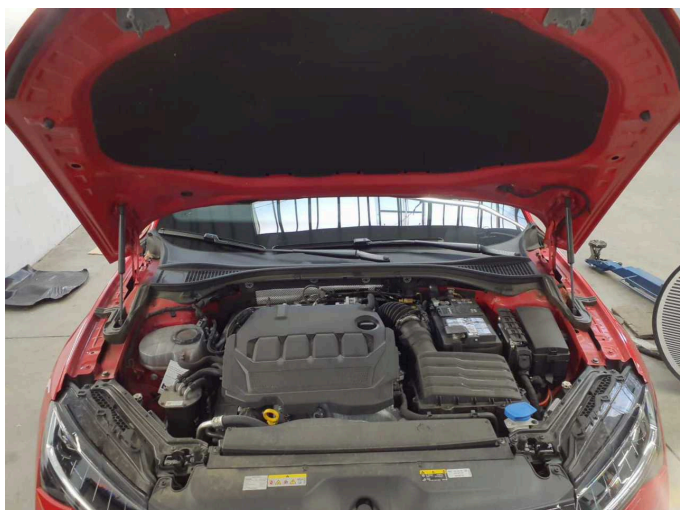


Figure 25: Misc.

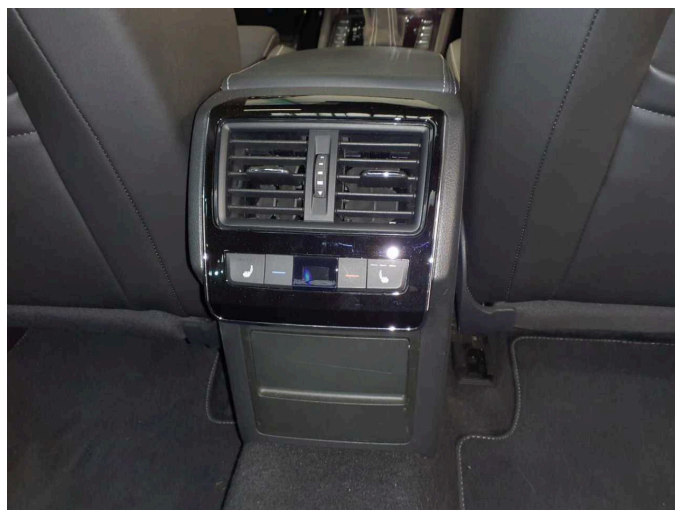


Figure 26: Misc.



Figure 27: Misc.



Figure 28: Misc.



Figure 29: Misc.

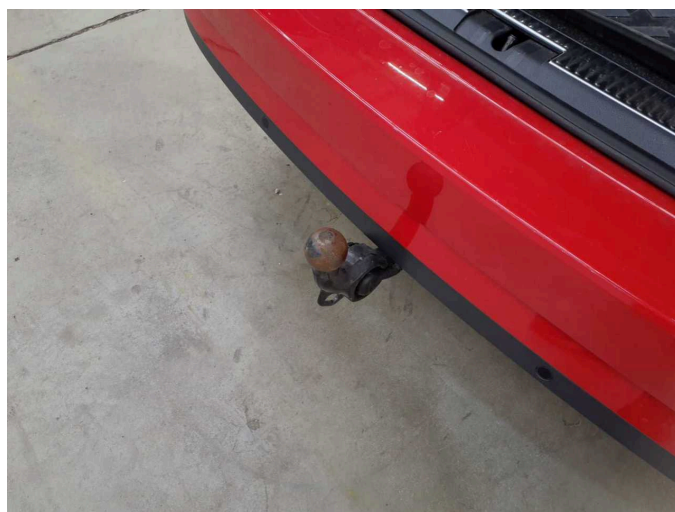


Figure 30: Misc.



Figure 31: Misc.



Figure 32: Misc.

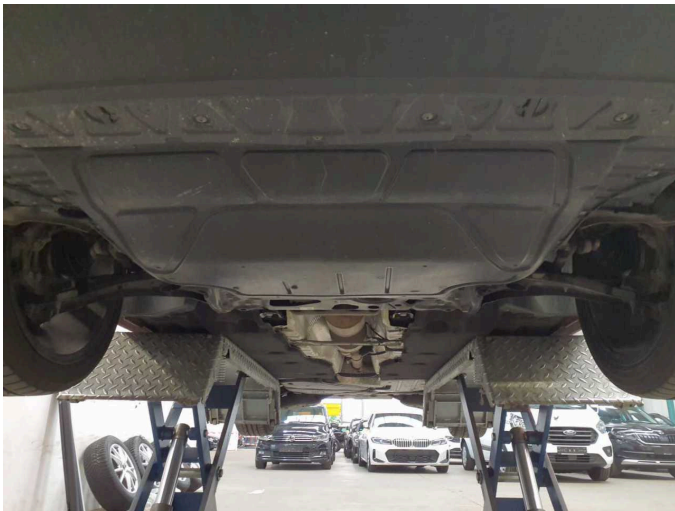


Figure 33: Misc.



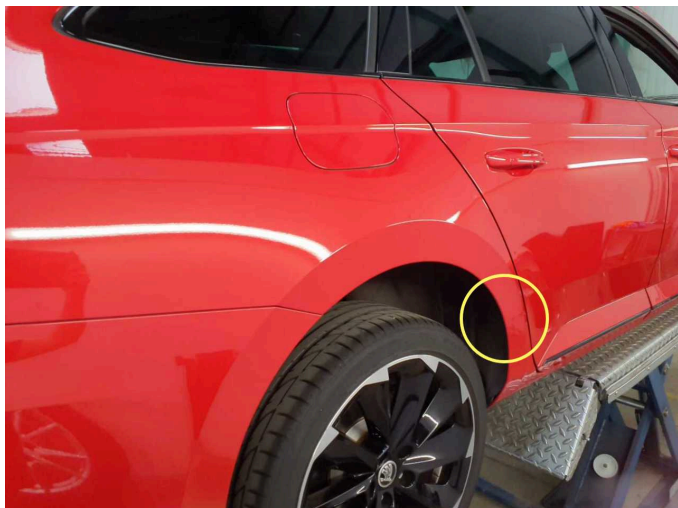
Damage 1: Body: Body - Glued / labelled - De-glue / neutralise



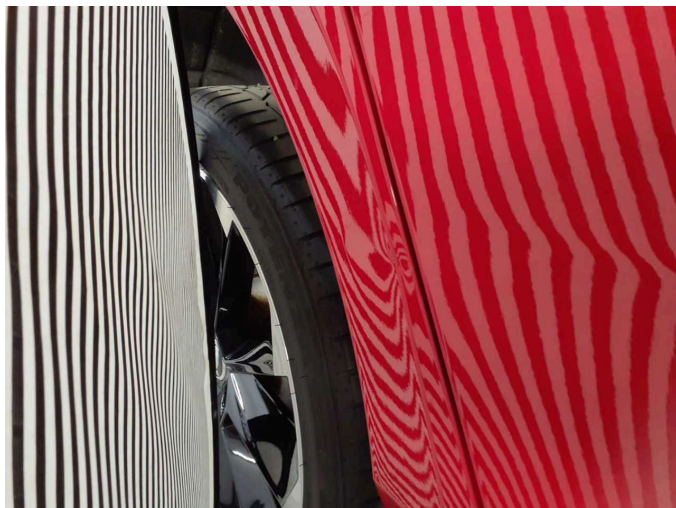
Damage 2: Rear bumper: Rear bumper - Scratch(es) - Smart repair



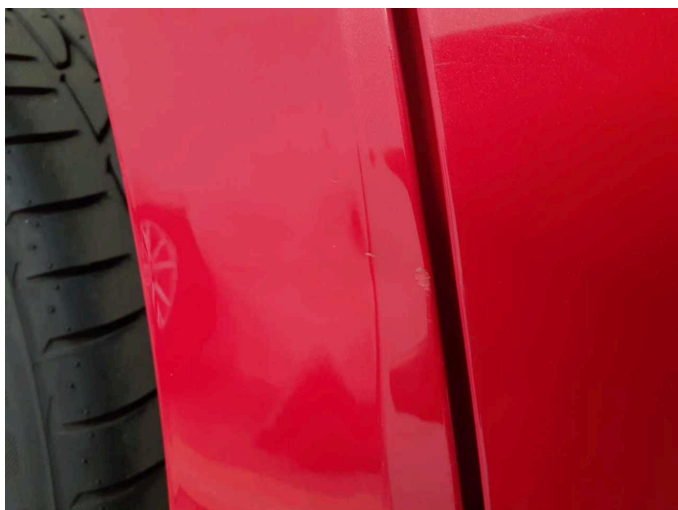
Damage 2: Rear bumper: Rear bumper - Scratch(es) - Smart repair



Damage 3: Side panel - rear right side: Side panel - Dent / paintcoat damage - Repair and paint



Damage 3: Side panel - rear right side: Side panel - Dent / paintcoat damage - Repair and paint



Damage 3: Side panel - rear right side: Side panel - Dent / paintcoat damage - Repair and paint



Wartungshistorie

(gemäß Auftraggeber Informationen)

Fahrgestellnummer: TMBJR7NPXR7029020

Hersteller / Modell: SKODA SKODA Superb Combi 2.0 TDI DSG Sportline

Datum	KM-Stand	Beschreibung
18.02.2025	30.363	Motoröl b. Wartung; Ölfilter ern; Regelwartungsdienst; Wartung Sonstiges