



Expertise

Protocol number: 39556940
Order No. / Reference: 24652184
Inspection date: 23 Apr 2025

Manufacturer: Skoda
VIN: TMBJR7NP7M7035835

Model: Superb Combi 2.0 TDI DSG Ambition



Vehicle details	
Manufacturer / Type / Model / Equipment	
Skoda Superb Combi 2.0 TDI DSG Ambition	
Vehicle Identification number	TMBJR7NP7M7035835
Mileage (Read)	116,482 km
First registration	22 Dec 2020
Number of holders	1
Next periodical technical inspection	12/2025
(Report not on hand)	
Power / Engine displacement	147 kw / 1,968 ccm
Fuel type / Cylinder	Diesel / 4
Gearbox / Number of gears	Automatic / 7
Type of drive	Front drive
Type of vehicle	Station wagon
Colour / colour code	Black Magic Pearlescent (F9R)
Doors / Seats	5 / 5
Upholstery type	Cloth
Colour of upholstery	Black
Re/Import	no
driving readiness	Roadworthy



Vehicle details

Maintenance booklet / proof	digital proof / complete	Next maintenance in	9,900 km
Last maintenance on / at	10/2024 at 96,347 km		
Key is / should be	2 / 2	FZG documents	ZB#2 (B) was available (copy), ZB#1 (S) was not available
		Letter No.	FX238082
Previous damage / Accident	Detectable	Repainting	None detectable
Inspection conditions	Sufficient	Lifting equipment / pit	yes
Test drive	Not performed	Engine function test	Performed
driving readiness	Roadworthy		
Manufacturer key number/ type code number	8004 / AWB 00100		
Emission standard	EURO6;WLTP;AP;PI/CI; M, N1 I	Fine dust sticker	
Permitted total weight	2,237 kg	Empty weight	

Tyres

Mounted tyres

#	Tyre size	Type of tyre	Manufacturer	Tread depth
1)	215/55 R17 98V	Winter tyres on Light alloy	Dunlop	3mm / 4mm
2)	215/55 R17 98V	Winter tyres on Light alloy	Dunlop	7mm / 7mm

Additional tyres

#	Tyre size	Type of tyre	Manufacturer	Tread depth
1)	215/55 R17 94W	Summer tyres on Light alloy	Pirelli	2mm / 3mm
2)	215/55 R17 94W	Summer tyres on Light alloy	Pirelli	5mm / 5mm

Replacement

Typ	Tyre size	Type of tyre	Manufacturer	Tread depth
	Tirefit	Expiration date 10/2024		

Legend: Tread depth information for tires on the left is in the first place, for tires on the right is in the second place on the axle in the direction of travel



Equipment

Standard equipment

- | | |
|---|--|
| <ul style="list-style-type: none"> • Storage compartments closed, behind the wheel arches in the trunk including cargo elements • Airbag, driver's knee airbag • Airbag, front side airbags • Traction control (ASR) • Exterior mirrors and door handles in body color • Illuminated glove compartment • Hydraulic brake assist (HBA) • Roof rails, black • Diesel particulate filter and SCR catalyst • Third brake light • Electronic parking brake including auto-hold function • Electronic Stabilization Control (ESC) • Electric windows front and rear, including anti-pinch protection and child safety lock • Cruise control including speed limiter • Tinted windows • Rear window wiper including windscreen washer system • Air Care Climatronic air conditioning system (2 zones) • Trunk cover, roll-up and removable, semi-automatic • Paint finish: Uni • LED rear lights • Steering wheel: height and length adjustable • reading lights at the front and rear of the headliner • Front center armrest with storage compartment • Engine drag torque control (MSR) • Multi-collision brake • Rear parking sensors • Radio: Bolero infotainment system • Radio accessories: Digital radio reception DAB+ • Radio accessories: SmartLink+ • Tire pressure monitoring • Wheels: 17" light alloy wheels Drakon (6.5J x 17" ET 41 with 215/55 R17 tires - anthracite, high-sheen) • seat belts Superb • Seats: Height-adjustable front seats • SKODA Care Connect • Automatic start/stop system including brake energy recovery • 12-V socket in the center console front and rear • Chrome-plated elements • Immobiliser | <ul style="list-style-type: none"> • Shelves • Airbag, driver and switchable passenger airbag • Airbag, head airbags • Anti-lock braking system (ABS) • Exterior mirrors electrically adjustable and heated • Exterior mirrors, electrically folding • Hill start assist • Grey headliner • Decorative insert Silver Brushed • tachometer • Easy Start (start-stop button instead of ignition lock) • Electronic transverse differential lock (XDS+) • Headlight assistant and rain sensor • Front radar assistant including city emergency braking function • Transmission: 7-speed direct shift gearbox (DSG) • Heated rear window • ISOFIX preparation on the outer rear seats, including top tether • Headrests height adjustable front and rear • LED low beam • Steering wheel: 2-spoke leather steering wheel with multifunction buttons • Rear center armrest with cup holders and through-loading option • Multifunction display in the instrument cluster • LED fog lights with integrated cornering light • Upholstery: Cloth • Radio accessories: 2 USB-A ports in the center console • Radio accessories: In Car Communication • Radio accessories: Wireless SmartLink for Apple Car Play • Tire mobility kit (tire repair spray including compressor) • Heated windscreen washer nozzles • Power steering, electromechanical • Seats: Adjustable lumbar supports in the front seats • Seats: Rear seat backrest 60:40 split folding • Sun visor on driver and passenger side with illuminated make-up mirror • 12-V socket in the trunk • Telephone: Comfort hands-free Bluetooth • Lashing eyes in the trunk • Central locking with radio remote control |
|---|--|

Extra equipment

- | | |
|--|---|
| <ul style="list-style-type: none"> • Adaptive Distance Assistant ACC (control range up to 210 km/h) (replaces cruise control system) • Chassis: Sports suspension (15 mm lowering) • Kessy, keyless entry and start-stop system | <ul style="list-style-type: none"> • Decorative insert Dark Brushed • Electric tailgate opening (including trunk cover and multifunctional storage) • Finish: pearl effect |
|--|---|



- Package: Business Amundsen (Combi) (dynamic Amundsen radio navigation system - capacitive 8" touch display in glass design - color Maxi-Dot display - Wi-Fi hotspot (use of the data connection of the paired mobile phone) - voice control - phone box with inductive charging function (connection via external antenna) - fatigue detection - 230 V socket and USB ports, tablet holder in the rear - Sunset (rear window and rear side windows dark tinted) - Infotainment Online subscription (3 years) - luggage net partition)
- Steering wheel: Heated steering wheel (2 spokes) (with shift paddles)
- Heated windshield
- Matrix LED headlights (AFS -dynamic high beam assistant - automatic headlight range control -headlight cleaning system -LED rear lights in crystal glass look -including dynamic indicators)
- Parking sensors front and rear
- Progressive steering (adjustment of the steering angle depending on the speed)
- Seats: Heated front seats
- Trailer coupling, pivoting including trailer stabilization

Brief expert findings

Documents submitted	At the time of the inspection, the registration certificate part 2 (letter) was available, but the registration certificate part 1 (certificate) was not available. (Copy)
VIN comparison	The vehicle identification number (VIN) was read and the undersigned verified that it matched the documents submitted during the inspection.
Inspection	The inspection conditions were sufficient to assess the vehicle. The inspection was carried out using the lighting conditions provided by the photo system included in the report. Lifting equipment and a pit were available for examining the vehicle.
Test drive	No test drive/maneuvering was carried out during the inspection of the vehicle.
Engine function test	An engine test run was performed.
driving readiness	At the time of the inspection, the vehicle was capable of driving and moving under its own power.

Value reducing factors

No.	Component group	Description
1	Equipment	Tirefit filler - Due - Replace
2	2nd wheel set	1 tyre - Does not meet the leasing specifications - Replace
3	Door - rear right side	Door - Scratch(es) - Smart repair
4	Body	Wheel well - front left side - Broken / torn - Replace
5	Side panel - rear left side	Side panel - Dent / paintcoat damage - Smart repair
6	Side panel - rear right side	Side panel - Scratched - Repair and paint

Wear and tear

No.	Component group	Description
1	Wheel / tyres	Tyre - front - Does not meet the leasing specifications - No deduction
2	Rear bumper	Rear bumper - Scratch(es) - No deduction
3	Body	Body - Scratch(es) - No deduction

The vehicle shows signs of wear commensurate with its age and use.

Previous damages

No.	Previous damage	Extent of damage (Net)
1	Rear, Provided by user / customer, from 13 Jul 2022	811,00 €
2	Rear, Provided by user / customer, from 18 Oct 2021	933,29 €



Order/Scope of order

The order was placed to prepare a sales report for the vehicle described. This includes the following:

- Description of core relevant information about the vehicle
- Documentation of equipment features
(Delivery by third-party service providers)
- Documentation of damage, defects, missing parts
- Documentation of previous damage, unrepaired previous damage, repainting
- a brief visual or functional inspection of the equipment details if possible.
(Functional tests of driver assistance systems are not included in the scope of services!)
- a photo documentation of the vehicle

Basis for the order

This product is based on the Alphabet Fuhrpark GmbH guidelines for vehicle returns and valuations. The expert makes the explicit findings in each individual case objectively within the framework of the specified standards based on his or her own expertise.

The vehicle inspection takes place in a disassembled state.

Damage or defects that can only be detected during disassembly/diagnosis work or through advanced knowledge remain within the scope of the prognosis risk. An extended risk exists for concealed defects caused by fraudulent deception and not identifiable by the expert.

Damage or defects resulting from normal use or wear and tear of the vehicle will be accepted according to the applicable standard.

There was no explicit identification or monetary consideration of the expected features within the product.

Features which in their nature and severity slightly exceed normal use but do not constitute unacceptable damage will be documented and identified under signs of use if necessary.

Damage or defects which, according to the underlying standard, can no longer be attributed to normal use or wear and tear are listed in the product under "Depreciating Factors".

Depending on the product specification, a monetary ID can be provided. If this takes place, the costs can be 100% d or pro rata depending on the vehicle's age and mileage.

Previous damages

According to available information previous damages were repaired at the vehicle. Traces of repairs, which allow conclusions about the area of repair, were not recognizable during the inspection.

Comments

- Für den montierten Radsatz wurde kein Nachweiß erbracht.
- Winterradsatz ist kein Bestandteil des Auslieferungsumfangs.



Figure 1: Diagonal front (left)



Figure 2: Diagonal front (right)



Figure 3: Diagonal rear (left)



Figure 4: Diagonal rear (right)



Figure 5: Interior - front



Figure 6: Interior - rear



Figure 7: Instrument cluster



Figure 8: Instrument panel

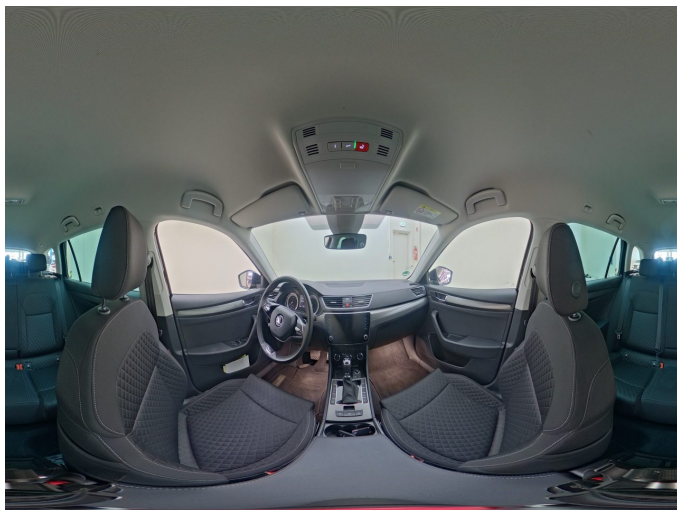


Figure 9: interior 360° view



Figure 10: Cargo area

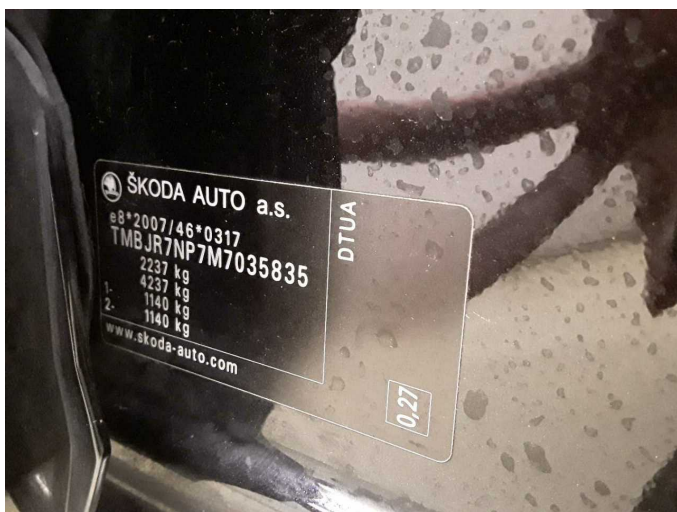


Figure 11: VIN



Figure 12: Mounted tyres



Figure 13: Documents



Figure 14: Documents



Figure 15: Additional tyres

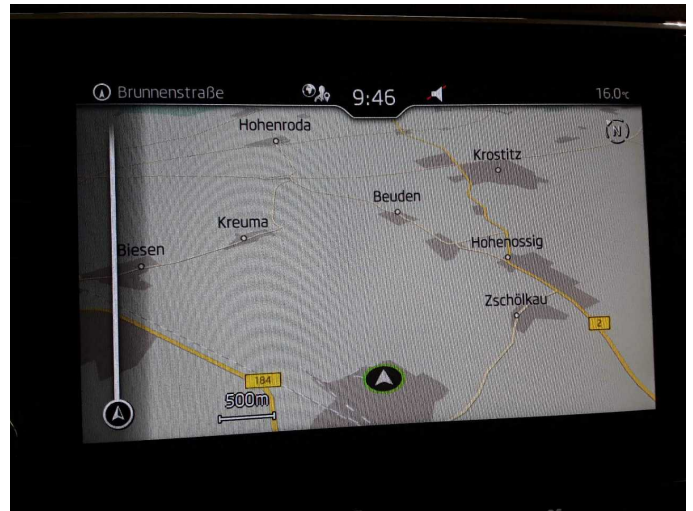


Figure 16: Navigation



Figure 17: Misc.



Figure 18: Misc.



Figure 19: Misc.



Figure 20: Misc.



Damage 1: Equipment: Tirefit filler - Due - Replace



Damage 2: 2nd wheel set: 1 tyre - Does not meet the leasing specifications - Replace



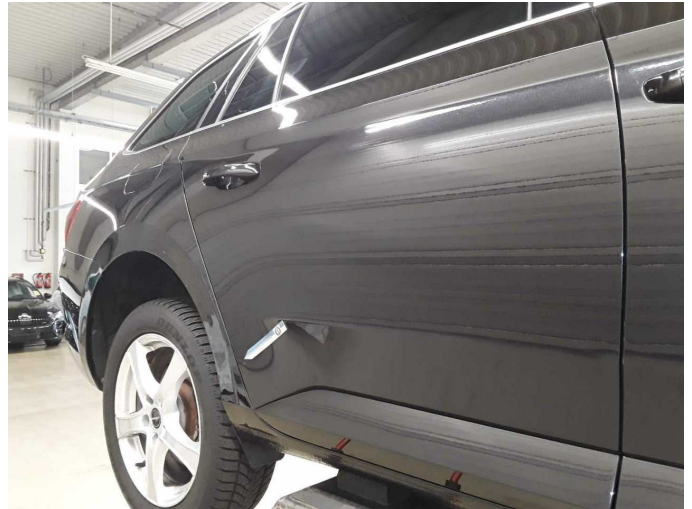
Damage 2: 2nd wheel set: 1 tyre - Does not meet the leasing specifications - Replace



Damage 3: Door - rear right side: Door - Scratch(es) - Smart repair



Damage 3: Door - rear right side: Door - Scratch(es) - Smart repair



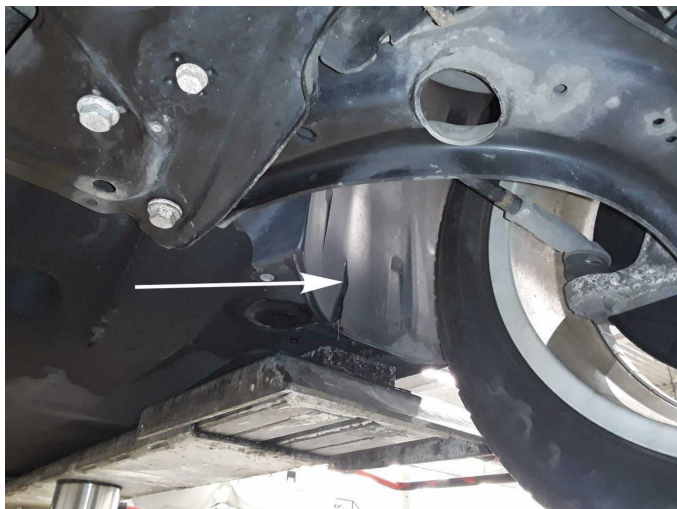
Damage 3: Door - rear right side: Door - Scratch(es) - Smart repair



Damage 4: Body: Wheel well - front left side - Broken / torn - Replace



Damage 4: Body: Wheel well - front left side - Broken / torn - Replace



Damage 4: Body: Wheel well - front left side - Broken / torn - Replace



Damage 5: Side panel - rear left side: Side panel - Dent / paintcoat damage - Smart repair



Damage 5: Side panel - rear left side: Side panel - Dent / paintcoat damage - Smart repair



Damage 5: Side panel - rear left side: Side panel - Dent / paintcoat damage - Smart repair



Damage 5: Side panel - rear left side: Side panel - Dent / paintcoat damage - Smart repair



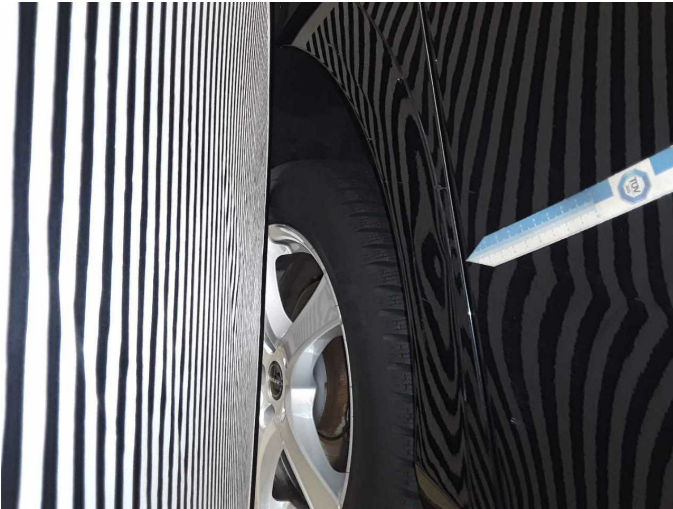
Damage 5: Side panel - rear left side: Side panel - Dent / paintcoat damage - Smart repair



Damage 6: Side panel - rear right side: Side panel - Scratched - Repair and paint



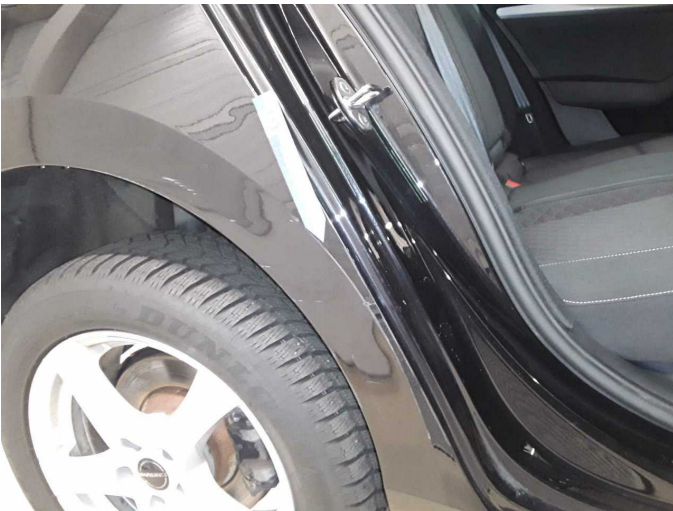
Damage 6: Side panel - rear right side: Side panel - Scratched - Repair and paint



Damage 6: Side panel - rear right side: Side panel - Scratched - Repair and paint



Damage 6: Side panel - rear right side: Side panel - Scratched - Repair and paint



Damage 6: Side panel - rear right side: Side panel - Scratched - Repair and paint



Damage 6: Side panel - rear right side: Side panel - Scratched - Repair and paint