



Expertise

Protocol number: 41285508  
Order No. / Reference: 25139999  
Inspection date: 28 Aug 2025

Manufacturer: Skoda  
VIN: TMBJR7NP3N7027698

Model: Superb Combi 2.0 TDI DSG Style



Vehicle details	
Manufacturer / Type / Model / Equipment	
Skoda Superb Combi 2.0 TDI DSG Style	
Vehicle Identification number	TMBJR7NP3N7027698
Mileage (Read)	53,359 km
First registration	22 Mar 2022
Number of holders	1
Next periodical technical inspection	03/2027
(Report on hand)	
Power / Engine displacement	147 kw / 1,968 ccm
Fuel type / Cylinder	Diesel / 4
Gearbox / Number of gears	Automatic transmission / 7
Type of drive	Front drive
Type of vehicle	Station wagon
Colour / colour code	Brillant-Silber Metallic
Doors / Seats	5 / 5
Upholstery type	Cloth
Colour of upholstery	Black-Anthracite



## Vehicle details

<b>Maintenance booklet / proof</b>	digital proof / complete	<b>Next maintenance in</b>	7,300 km
<b>Last maintenance on / at</b>	03/2025 at 46,414 km		
<b>Key is / should be</b>	2 / 2	<b>FZG documents</b>	ZB#2 (B) was available (copy), ZB#1 (S) was not available
		<b>Letter No.</b>	GJ898993
<b>Previous damage / Accident</b>	None detectable	<b>Repainting</b>	None detectable
<b>Inspection conditions</b>	sufficient	<b>Lifting equipment / pit</b>	yes
<b>Test drive</b>	Not performed	<b>Engine function test</b>	Performed
<b>Manufacturer key number/ type code number</b>	8004 / AWB 00330		
<b>Emission standard</b>	EURO6;WLTP;AP;PI/CI; M, N1 I	<b>Fine dust sticker</b>	
<b>Permitted total weight</b>	2,237 kg	<b>Empty weight</b>	

## Tyres

### Mounted tyres

#	Tyre size	Type of tyre	Manufacturer	Tread depth
1)	235/45 R18 94W	Summer tyres on Light alloy	Bridgestone	4mm / 4mm
2)	235/45 R18 94W	Summer tyres on Light alloy	Bridgestone	6mm / 6mm

### Additional tyres

#	Tyre size	Type of tyre	Manufacturer	Tread depth
1)	215/55 R17 98V	Winter tyres on Light alloy	Continental	6mm / 6mm
2)	215/55 R17 98V	Winter tyres on Light alloy	Continental	6mm / 6mm

### Replacement

Typ	Tyre size	Type of tyre	Manufacturer	Tread depth
	Tirefit	Expiration date 12/2025		

**Legend:** Tread depth information for tires on the left is in the first place, for tires on the right is in the second place on the axle in the direction of travel

## Equipment

### Standard equipment

- Storage compartments closed, behind the wheel arches in the trunk including cargo elements
- Airbag, driver's knee airbag
- Airbag, front side airbags
- Traction control (ASR)
- Exterior mirrors and door handles in body color
- Illuminated glove compartment
- Hydraulic brake assist (HBA)
- Roof rails, anodized
- Diesel particulate filter and SCR catalyst
- tachometer
- Dynamic Light Assistant (Masked Permanent High Beam)
- Electric tailgate opening
- Electronic transverse differential lock (XDS+)
- Headlight assistant and rain sensor
- Front radar assistant including city emergency braking function
- Cruise control including speed limiter
- Tinted windows
- Rear window wiper including windscreen washer system
- Child safety locks for the rear doors and windows, electric
- Air Care Climatronic air conditioning system (2 zones)
- Headrests height adjustable front and rear
- LED taillights in crystal glass look and animated indicators
- Steering wheel: 2-spoke leather steering wheel with multifunction buttons
- Matrix LED headlights
- Front center armrest with storage compartment
- Engine drag torque control (MSR)
- LED fog lights with integrated cornering light
- Upholstery: Cloth
- Radio accessories: Digital radio reception DAB+
- Radio accessories: voice control
- Radio accessories: Wireless SmartLink for Apple Car Play
- Tire pressure monitoring
- Wheels: 17" Drakon alloy wheels
- Power steering, electromechanical
- Seats: Heated front seats
- Seats: Electrically adjustable front seats, driver's seat with memory function
- Seats: Electric operation of the front passenger seat from the rear
- SKODA Care Connect
- Automatic start/stop system including brake energy recovery
- 12-V socket in the center console front and rear
- Chrome-plated elements
- Immobiliser
- Shelves
- Airbag, driver and switchable passenger airbag
- Airbag, head airbags
- Anti-lock braking system (ABS)
- Exterior mirrors electrically adjustable and heated
- Exterior mirrors, electrically folding
- Hill start assist
- Grey headliner
- Decorative inlay Dark Brushed
- Digital instrument cluster (Virtual Cockpit) 10.2"
- Third brake light
- Easy Start (start-stop button instead of ignition lock)
- Electronic parking brake including auto-hold function
- Electronic Stabilization Control (ESC)
- Electric windows front and rear, including anti-pinch protection and child safety lock
- Front footwell lighting
- Transmission: 7-speed direct shift gearbox (DSG)
- Heated rear window
- ISOFIX preparation on the outer rear seats, including top tether
- Trunk cover, roll-up and removable, semi-automatic
- Metal loading sill protection
- Remote release of the rear seat backrests in the trunk
- Steering wheel: height and length adjustable
- Reading lights at the front and rear of the roof lining
- Rear center armrest with cup holders and through-loading option
- Multi-collision brake
- Rear parking sensors
- Radio: Bolero infotainment system
- Radio accessories: In Car Communication
- Radio accessories: USB ports in the front (Type-C) and USB charging port (Type-A) in the center armrest
- Tire mobility set
- Heated windscreen washer nozzles
- Seat belts Superb
- Seats: Adjustable lumbar supports in the front seats
- Seats: electrically adjustable driver's seat with memory function
- Seats: Height-adjustable front seats
- Seats: Rear seat backrest 60:40 split folding
- Sun visor on driver and passenger side with illuminated make-up mirror
- 12-V socket in the trunk
- Telephone: Comfort hands-free Bluetooth
- Lashing eyes in the trunk
- Central locking with radio remote control

### Extra equipment



- Electric front windows
- Package: Business Columbus (DSG) (Columbus navigation system - voice control - Wi-Fi hotspot - Wireless Smartlink for Apple CarPlay - capacitive 9.2" touch display in glass design - Phonebox - Traveller assistance system (traffic sign recognition, predictive lane departure warning (pACC), adaptive lane departure warning, emergency and traffic jam assistant, capacitive steering wheel with handbrake detection) - 230 V socket and 3 USB ports, tablet holder - Sunset - Infotainment Online (3-year term))
- Paint finish: metallic
- Trailer coupling, pivoting including trailer stabilization
- 360° surrounding camera (area view)
- Adaptive Distance Assistant up to 210 km/h
- Chassis: Adaptive chassis DCC (10 mm lowering, adjustable damper settings) (including driving profile selection (Normal, Comfort, Eco, Sport, Individual))
- Heated windshield
- Keyless entry/start-stop
- Progressive steering
- Variable loading floor, organizer, crossbar
- Wheels: 18" Antares alloy wheels (8J x 18" ET 44 with 235/45 R18 tires)

### Brief expert findings

Documents submitted	At the time of the inspection, the registration certificate Part 2 (letter) was available, but the registration certificate Part 1 (certificate) was not. (Copy)
VIN comparison	The vehicle identification number (VIN) was read from the vehicle and its conformity with the submitted documents was verified during the inspection by the undersigned.
Inspection	The inspection conditions were sufficient for the assessment of the vehicle. Lifting equipment and a pit were available for examining the vehicle.
Test drive	No test drive/maneuvering was carried out during the inspection of the vehicle.
Engine function test	An engine test run was performed.

### Value reducing factors

No.	Component group	Description
1	Roof	Roof (3x) - dent(s) - Smooth repair work
2	Door - front right side	Door - Scratch(es) - Paint
3	Front bumper	Front bumper - Scratched - Paint
4	Rear bumper	Rear bumper - Scratch(es) - Paint
5	Side panel - rear right side	Side panel - Scratch(es) - Paint

### Wear and tear

No.	Component group	Description
1	Door - rear right side	Door - Scratch(es) - No deduction
2	Bonnet	Bonnet - Stone chips - No deduction
3	Vehicle glazing	Windscreen - Stone chips - No deduction

The vehicle shows signs of wear commensurate with its age and use.

### Order/Scope of order

The order was placed to prepare a sales report for the vehicle described. This includes the following:

- Description of core relevant information about the vehicle
- Documentation of equipment features  
(*Delivery by third-party service providers*)
- Documentation of damage, defects, missing parts
- Documentation of previous damage, unrepaired previous damage, repainting
- a brief visual or functional inspection of the equipment details if possible.  
(*Functional tests of driver assistance systems are not included in the scope of services!*)
- a photo documentation of the vehicle



## Basis for the order

This product is based on the Alphabet Fuhrpark GmbH guidelines for vehicle returns and valuations. The expert makes the explicit findings in each individual case objectively within the framework of the specified standards based on his or her own expertise.

The vehicle inspection takes place in a disassembled state.

Damage or defects that can only be detected during disassembly/diagnosis work or through advanced knowledge remain within the scope of the prognosis risk. An extended risk exists for concealed defects caused by fraudulent deception and not identifiable by the expert.

Damage or defects resulting from normal use or wear and tear of the vehicle will be accepted according to the applicable standard.

There was no explicit identification or monetary consideration of the expected features within the product.

Features which in their nature and severity slightly exceed normal use but do not constitute unacceptable damage will be documented and identified under signs of use if necessary.

Damage or defects which, according to the underlying standard, can no longer be attributed to normal use or wear and tear are listed in the product under "Depreciating Factors".

Depending on the product specification, a monetary ID can be provided. If this takes place, the costs can be 100% d or pro rata depending on the vehicle's age and mileage.

## Previous damages

Apparently, no repaired previous damage could be found on the vehicle.

## Comments

Das Fahrzeug befand sich zum Besichtigungszeitpunkt in beschädigten, nicht demontierten Zustand. Schadenausweitung möglich, Zusatzkosten können entstehen.

Der Winterradsatz ist nicht Bestandteil der vorliegenden Fahrzeugausstattung.





Figure 1: Diagonal front (left)



Figure 2: Diagonal front (right)



Figure 3: Diagonal rear (left)



Figure 4: Diagonal rear (right)



Figure 5: Interior - front



Figure 6: Interior - rear





Figure 7: Instrument cluster



Figure 8: Instrument panel



Figure 9: interior 360° view ([Online link](#))



Figure 10: Cargo area



Figure 11: VIN



Figure 12: Mounted tyres





Figure 13: Documents



Figure 14: Documents



Figure 15: Additional tyres



Figure 16: Navigation



Figure 17: Misc.



Figure 18: Misc.





Figure 19: Misc.



Figure 20: Misc.



Figure 21: Misc.



Figure 22: Misc.



Figure 23: Misc.



Figure 24: Misc.





Figure 25: Misc.



Figure 26: Misc.

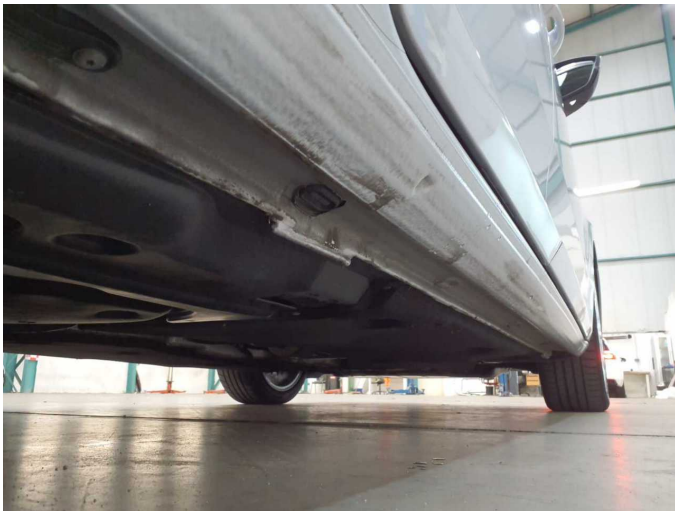


Figure 27: Misc.



Figure 28: Misc.

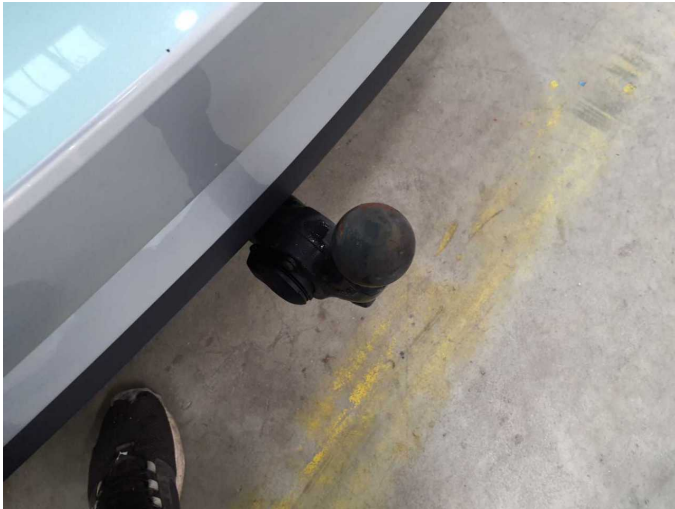


Figure 29: Misc.

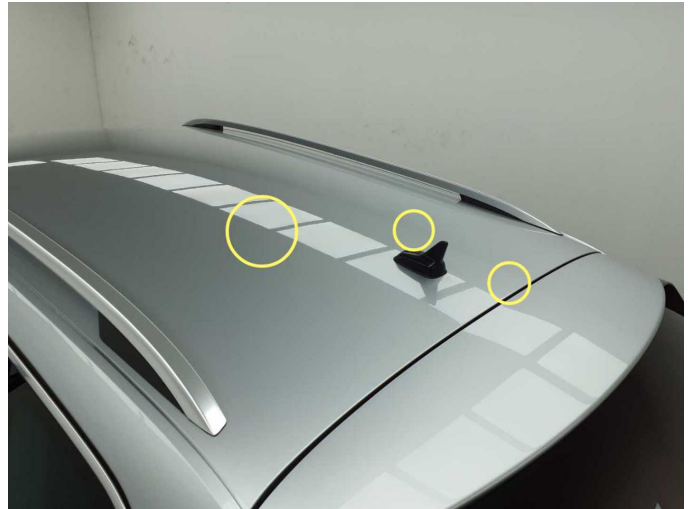


Figure 30: Misc.





**Figure 31:** Misc.



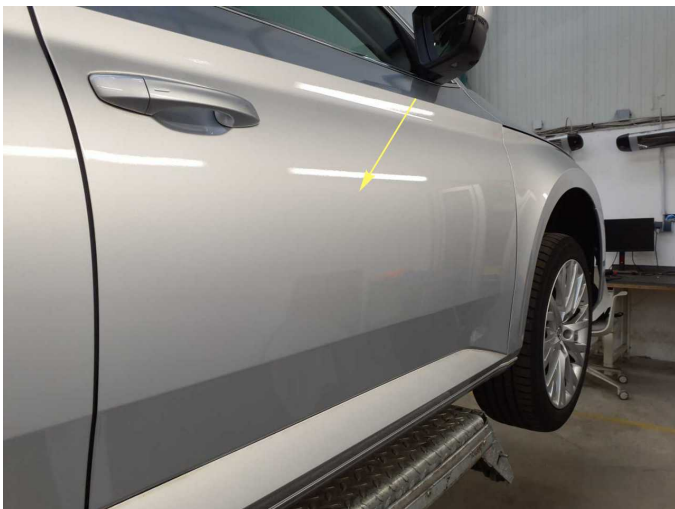
**Damage 1:** Roof: Roof (3x) - dent(s) - Smooth repair work



**Damage 1:** Roof: Roof (3x) - dent(s) - Smooth repair work



**Damage 1:** Roof: Roof (3x) - dent(s) - Smooth repair work

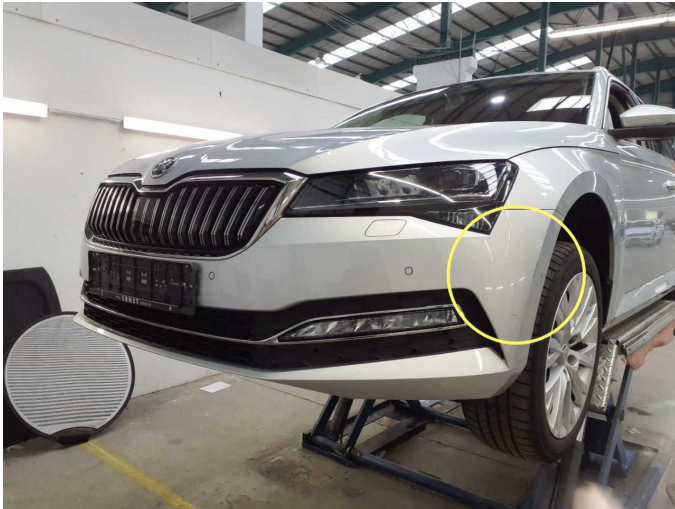


**Damage 2:** Door - front right side: Door - Scratch(es) - Paint



**Damage 2:** Door - front right side: Door - Scratch(es) - Paint





**Damage 3:** Front bumper: Front bumper - Scratched - Paint



**Damage 3:** Front bumper: Front bumper - Scratched - Paint



**Damage 4:** Rear bumper: Rear bumper - Scratch(es) - Paint



**Damage 4:** Rear bumper: Rear bumper - Scratch(es) - Paint



**Damage 4:** Rear bumper: Rear bumper - Scratch(es) - Paint



**Damage 5:** Side panel - rear right side: Side panel - Scratch(es) - Paint



**Damage 5:** Side panel - rear right side: Side panel - Scratch(es) - Paint



**Damage 5:** Side panel - rear right side: Side panel - Scratch(es) - Paint



**Damage 5:** Side panel - rear right side: Side panel - Scratch(es) - Paint



# Wartungshistorie

(gemäß Auftraggeber Informationen)

Fahrgestellnummer: TMBJR7NP3N7027698

Hersteller / Modell: SKODA SKODA Superb Combi 2.0 TDI DSG Style

Datum	KM-Stand	Beschreibung
21.03.2025	46.414	AU; Bremse Sonstiges; Bremsklötze hinten; Motoröl b. Wartung; Ölfilter ern; Ölwechsel; Wartung Sonstiges
19.03.2024	30.614	Bremsflüssigkeit; Bremsflüssigkeit ern; Motoröl b. Wartung; Ölfilter ern; Regelwartungsdienst; Wartung Sonstiges