



# SKODA Fabia

## Fabia Combi 1.0 TSI

VIN NO TMBJR6NJ3KZ009577  
Registration Number J3KZ009577



MOT Date	Number of Owners	Number of Keys	Odometer Reading
2026-04-01	2	1	144249 km
Last Service	Last Service Mileage	First Registration Date	Country First Registered
-	-	2018-10-17	Germany

### Inspection Report Summary

Customer	BCA Online	Report Number	P20250922140827
Inspection Date / Place	2025-09-22 / ARS Altmann AG Riedstadt	Cosmetic Grade	4

### Vehicle Summary

Vehicle Condition	Runner	VAT Type	Margin
Fuel Type	Petrol	Road Worthy	Yes
Colour	Black	Engine Size (cc)	999
Engine Size	1.0	No of Doors	5
Body Type	Stationwagon / Estate	Drive Train	Front
Seat Colour		No of Seats	5
Seat Covering Name		Seat Covering	Cloth
Charging Cables		NEDC CO2 Rating (q/km)	105
Gearbox Type	Manual		

### Vehicle History & Documents

Service Book Available	Missing	Next Service Mileage	km
Previous Usage		Imported	No
Manufacturer Warrenty			









Equipment

Trip Computer	Airbag Status	Bluetooth telephone interface	Digital Radio
Heated wing mirrors	Remote central locking	Stability control	Radio
USB Socket	Anti-lock braking	Cruise control	Front parking sensors
Remote adjusting wing mirrors	Satellite navigation	Leather steering wheel	Rear parking sensors

Equipment Details

Air Conditioning	Climate Control	Seat Heating	Front
------------------	-----------------	--------------	-------

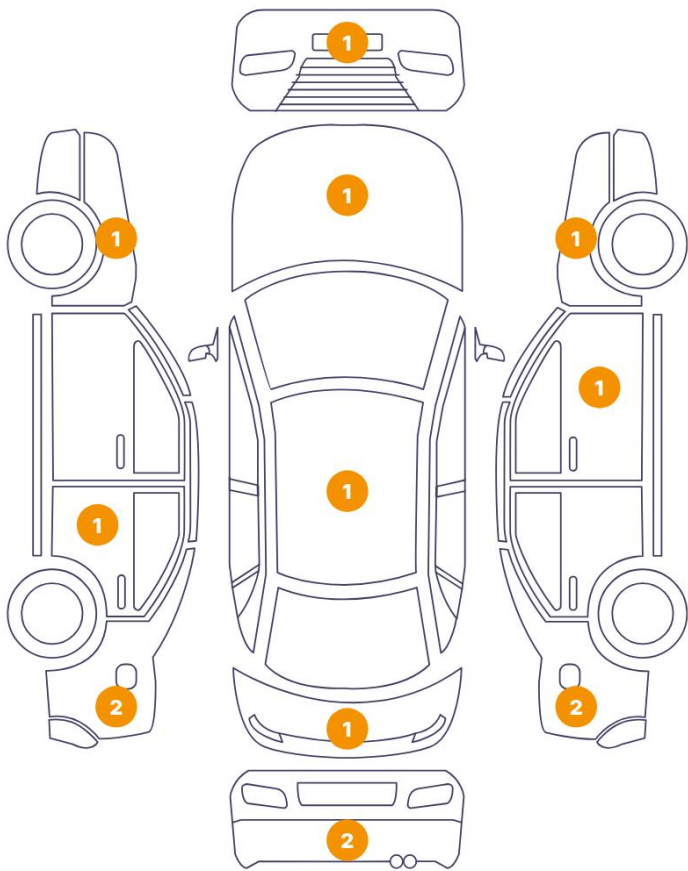
Wheels & Tyres

Right Front Tyre Depth	3	Left Front Tyre Depth	3
Right Rear Tyre Depth	4	Left Rear Tyre Depth	4



Cosmetic Damage

14 Schäden



0 Schäden



Component		Damage	Comments
1	Hood	Paint / Stone Chip	
2	Bumper / Front	Paint / Scratch / Scuff	
3	Fender / Front Left	Bodywork / Dent / Dent	
4	Door / Back Left	Paint / Scratch / Scuff	
5	Fender / Back Left	Paint / Scratch / Scuff	
6	Fender / Back Left	Bodywork / Dent / Dent	
7	Bumper / Back	Paint / Scratch / Scuff	
8	Bumper / Back	Paint / Scratch / Scuff	
9	Fender / Back Right	Paint / Scratch / Scuff	
10	Roof	Bodywork / Dent / Dent	
11	Fender / Back Right	Bodywork / Dent / Dent	
12	Door / Front Right	Paint / Scratch / Scuff	

13	Fender / Front Right	Bodywork / Dent / Dent
14	Rear Window / Back	Glass Break / Scratch / Scratch



1. Hood  
Paint / Stone Chip -



2. Bumper / Front  
Paint / Scratch / Scuff -



3. Fender / Front Left  
Bodywork / Dent / Dent -



4. Door / Back Left  
Paint / Scratch / Scuff -

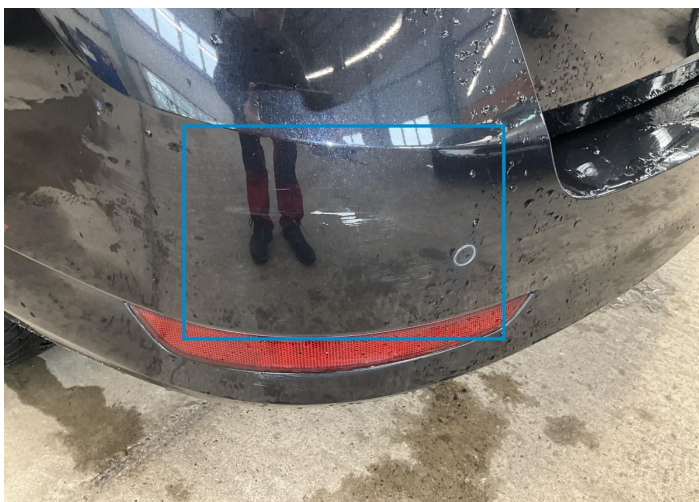


5. Fender / Back Left  
Paint / Scratch / Scuff -



6. Fender / Back Left  
Bodywork / Dent / Dent -





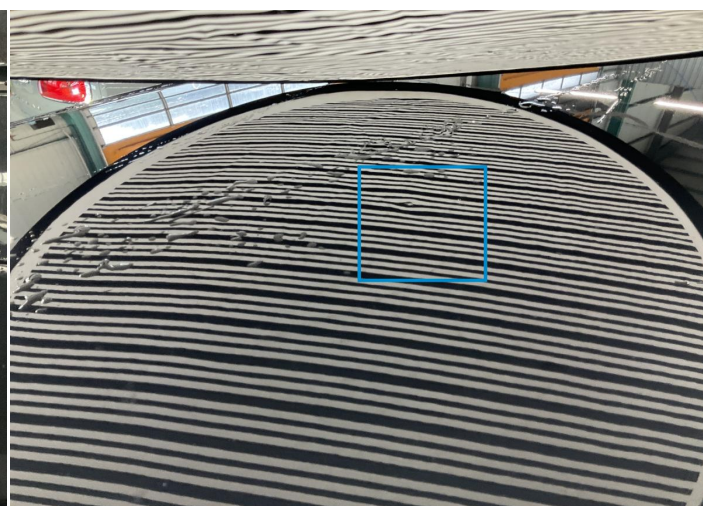
7. Bumper / Back  
Paint / Scratch / Scuff -



8. Bumper / Back  
Paint / Scratch / Scuff -



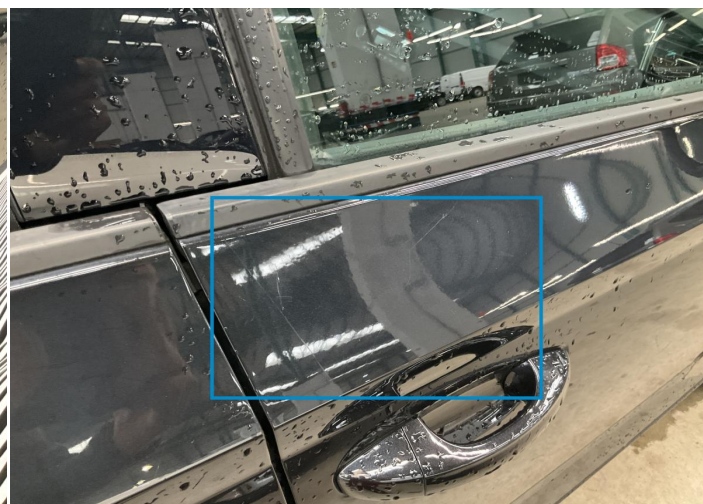
9. Fender / Back Right  
Paint / Scratch / Scuff -



10. Roof  
Bodywork / Dent / Dent -



11. Fender / Back Right  
Bodywork / Dent / Dent -

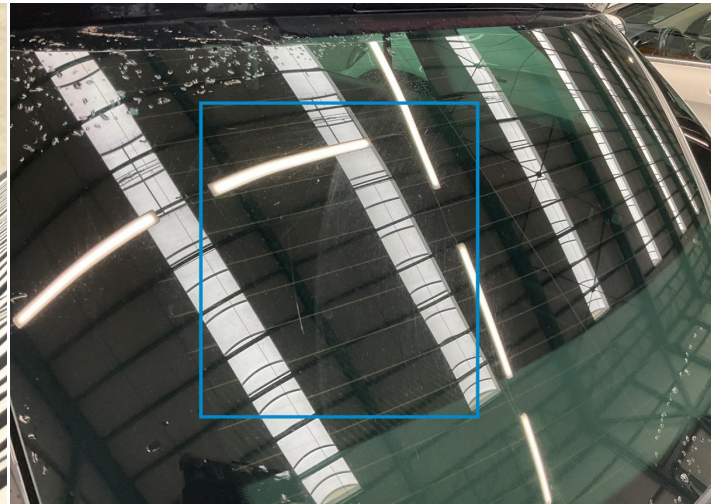


12. Door / Front Right  
Paint / Scratch / Scuff -





13. Fender / Front Right  
Bodywork / Dent / Dent -



14. Rear Window / Back  
Glass Break / Scratch / Scratch -

## Mechanical Condition

### Control Lights

Display Defect	✓	ABS Warning Light	✓
ESP Fault/Traction Control Malfunction Light	✓	Airbag Warning Light	✓
Oil Pressure Warning Light	✓	Brake Warning Light	✓
Power Steering Warning Light	✓	Alternator / Battery	✓
No Dashboard Lights	✓	Service Light	✓
Tire Pressure Monitoring System	!		

### Engine

Engine Starts	✓	Engine Status / EML	✓
Engine Leak Visible	✓		

### Equipments Test

Central Locking	✓	Main & Spare Keys Functioning	✓
Electric Windows	✓	Navigation System	✓
Audio Equipment	✓	AC / Heating System	✓
Other Equipments	✓	Parking Sensors / Cameras Functioning	✓

### Gearbox

Gear Box	✓
----------	---

### Levels

Brakes Fluid	✓	Coolant Fluid	✓
--------------	---	---------------	---



Test Drive Inspection

Steering Wheel

Steering | Noise / Anomaly

Engine

Engine Noise The Gears Scratch / Skip / Abnormal Operation

Fume Quantity Power Loss

Brake

Brake System Anomaly

Clutch

Clutch Functioning

General

Test Driven Status

- No troubles detected, good condition or correct tests, according to vehicle age and mileage
- Damages or malfunction detected that requires repairs by the buyer
- Not applicable
- Not tested

Disclaimer

Please also note the "UserGuide condition report", which shows the scope of the vehicle description. [User Guide](#)