



Expertise

Protocol number: 40524385
Order No. / Reference: 24934624
Inspection date: 11 Jul 2025

Manufacturer: Skoda
VIN: TMBJJ8NX4PY011004

Model: Octavia Combi 2.0 TDI DSG Clever



Vehicle details	
Manufacturer / Type / Model / Equipment	
Skoda Octavia Combi 2.0 TDI DSG Clever	
Vehicle Identification number	TMBJJ8NX4PY011004
Mileage (Read)	131,739 km
First registration	26 Sept 2022
Number of holders	1
Next periodical technical inspection	09/2025
(Report not on hand)	
Power / Engine displacement	110 kw / 1,968 ccm
Fuel type / Cylinder	Diesel / 4
Gearbox / Number of gears	Automatic / 7
Type of drive	Front drive
Type of vehicle	Station wagon
Colour / colour code	Black Magic Pearlescent (F9R)
Doors / Seats	5 / 5
Upholstery type	Cloth
Colour of upholstery	Black
Re/Import	no
Driving readiness	Roadworthy



Vehicle details

Maintenance booklet / proof	digital proof / complete	Next maintenance in	14,000 km
Last maintenance on / at	03/2025 at 118,909 km		
Key is / should be	2 / 2	FZG documents	ZB#2 (B) was available (copy), ZB#1 (S) was not available
		Letter No.	GJ954998
Previous damage / Accident	None detectable	Repainting	None detectable
Inspection conditions	Sufficient	Lifting equipment / pit	yes
Test drive	Not performed	Engine function test	Performed
Driving readiness	Roadworthy		
Manufacturer key number/ type code number	8004 / AWL 00191		
Emission standard	EURO6;WLTP;AP;PI/CI; M, N1 I	Fine dust sticker	
Permitted total weight	1,990 kg	Empty weight	

Tyres

Mounted tyres

#	Tyre size	Type of tyre	Manufacturer	Tread depth
1)	205/55 R17 91V	Summer tyres on Light alloy	Goodyear	6mm / 6mm
2)	205/55 R17 91V	Summer tyres on Light alloy	Goodyear	6mm / 6mm

Replacement

Typ	Tyre size	Type of tyre	Manufacturer	Tread depth
	Tirefit	Expiration date 06/2026		

Legend: Tread depth information for tires on the left is in the first place, for tires on the right is in the second place on the axle in the direction of travel



Equipment

Standard equipment

- Cornering light integrated in fog lights
- Shelves
- Airbag, driver and passenger
- Airbag, head airbags
- Airbag: Center airbag front
- Trailer coupling preparation including trailer stabilization
- Anti-lock braking system (ABS)
- Exterior mirrors electrically adjustable and heated
- Heated windscreen washer nozzles including 5l washer fluid reservoir
- Glasses compartment on the roof lining
- Roof rails, black
- diesel particulate filter
- Third brake light
- Electronic transverse differential lock (XDS+)
- Driving light assistant
- High beam assistant
- Front radar assistant including city emergency braking function and person and cyclist detection
- Tinted windows
- Heated rear window
- Rear window wiper including windscreen washer system
- ISOFIX preparations on the front passenger seat and the outer rear seats including top tether anchorage
- Removable trunk cover
- LED fog lights
- LED license plate lighting
- Remote release of the rear seat backrests in the trunk
- Steering wheel: height and length adjustable
- Steering wheel: Leather steering wheel with multifunction buttons with shift paddles
- Front center armrest, including storage compartment
- Multifunction display in the instrument cluster
- Upholstery: Cloth
- Radio accessories: 2 USB-C ports at the front
- Radio accessories: 8 speakers
- Radio accessories: Digital radio reception DAB+
- Radio accessories: voice control
- Tire pressure monitoring
- Wheels: 17" Pulsar AERO alloy wheels, black, high-sheen finish (7J x 17, ET 46 with 205/55 R17 tires)
- Seat belts
- Seats: Heated rear seats
- Seats: Manually adjustable ergonomic seats in the front
- SKODA Care Connect
- Lane keeping assistant (Lane Assist)
- 230 V socket and USB charging port
- Storage compartment in the luggage compartment with cargo element
- Airbag, driver's knee airbag
- Airbag, front side airbags
- Ambient lighting
- Extended warranty for 3 years, max. 50,000 km
- Traction control (ASR)
- Exterior mirrors, electrically folding
- hill start assist including auto-hold function
- Hydraulic brake assist (HBA)
- Grey headliner
- Decorative strip in silver feel with ambient lighting
- tachometer
- Electronic parking brake
- Electronic Stabilization Control (ESC)
- Electric windows front and rear, including anti-pinch protection and child safety lock
- Cruise control system
- Transmission: 7-speed direct shift gearbox (DSG)
- Green tec: Automatic start/stop system including brake energy recovery
- Interior mirror automatically dimming
- Child safety locks for the rear doors and windows
- Climatronic air conditioning (3 zones)
- Headrests (5) front and rear height adjustable
- LED taillights in crystal glass look and animated indicators
- LED headlights with LED daytime running lights
- Steering wheel: Heated steering wheel including heated front seats
- Manual headlight range adjustment
- Rear center armrest with through-loading option
- Engine drag torque control (MSR)
- Parking sensors front and rear
- Radio: Bolero music system with capacitive 10" color display
- Radio accessories: Bluetooth hands-free system
- Radio accessories: SmartLink
- Rain sensor
- Tire mobility set
- Rear view camera
- Power steering, electromechanical
- Safety lights in the front side doors
- Seats: Height-adjustable driver and passenger seats
- Seats: Rear seat backrest 60:40 split folding
- Speed limiter
- 12-V socket in the trunk
- Phone: Wireless SmartLink for Apple CarPlay
- Lashing eyes in the trunk
- Immobiliser



- Glazing: Acoustic glazing in the front side windows and Sunset
- Central locking including radio remote control integrated in the key and EASY Start

Extra equipment

- Deselecting the extended warranty
- Luggage net partition
- Finish: pearl effect
- Package: Columbus infotainment package (Columbus navigation system - Infotainment Online (3-year term) - Digital instrument cluster (Virtual Cockpit) - Phonebox - KESSY (keyless entry and start-stop system))
- Trailer coupling, pivoting including trailer stabilization and adapter
- LED main headlights Matrix and dynamic high beam assistant (AFS) (headlight cleaning system including washer fluid level control)
- Heated windshield

Brief expert findings

Documents submitted	At the time of the inspection, the registration certificate Part 2 (letter) was available, but the registration certificate Part 1 (certificate) was not. (Copy)
VIN comparison	The vehicle identification number (VIN) was read and the undersigned verified that it matched the documents submitted during the inspection.
Inspection	The inspection conditions were sufficient for the assessment of the vehicle. Lifting equipment and a pit were available for examining the vehicle.
Test drive	No test drive/maneuvering was carried out during the inspection of the vehicle.
Engine function test	An engine test run was performed.
Driving readiness	The vehicle was drivable at the time of inspection.

Value reducing factors

No.	Component group	Description
1	Equipment	Vehicle key (Batterie) - Empty - Replace
2	Trim / covers	Floor mats - Broken / torn - Replace
3	Bonnet	Insulation lining - Broken / torn - Replace
4	Front bumper	Front bumper - Scratched - Smart repair
5	Vehicle glazing	Windscreen - Stone chips - Replace

Order/Scope of order

The order was placed to prepare a sales report for the vehicle described. This includes the following:

- Description of core relevant information about the vehicle
- Documentation of equipment features
(*Delivery by third-party service providers*)
- Documentation of damage, defects, missing parts
- Documentation of previous damage, unrepaired previous damage, repainting
- a brief visual or functional inspection of the equipment details if possible.
(*Functional tests of driver assistance systems are not included in the scope of services!*)
- a photo documentation of the vehicle



Basis for the order

This product is based on the Alphabet Fuhrpark GmbH guidelines for vehicle returns and valuations. The expert makes the explicit findings in each individual case objectively within the framework of the specified standards based on his or her own expertise.

The vehicle inspection takes place in a disassembled state.

Damage or defects that can only be detected during disassembly/diagnosis work or through advanced knowledge remain within the scope of the prognosis risk. An extended risk exists for concealed defects caused by fraudulent deception and not identifiable by the expert.

Damage or defects resulting from normal use or wear and tear of the vehicle will be accepted according to the applicable standard.

There was no explicit identification or monetary consideration of the expected features within the product.

Features which in their nature and severity slightly exceed normal use but do not constitute unacceptable damage will be documented and identified under signs of use if necessary.

Damage or defects which, according to the underlying standard, can no longer be attributed to normal use or wear and tear are listed in the product under "Depreciating Factors".

Depending on the product specification, a monetary ID can be provided. If this takes place, the costs can be 100% d or pro rata depending on the vehicle's age and mileage.

Previous damages

Apparently, no repaired previous damage could be found on the vehicle.



Figure 1: Diagonal front (left)



Figure 2: Diagonal front (right)



Figure 3: Diagonal rear (left)



Figure 4: Diagonal rear (right)



Figure 5: Interior - front



Figure 6: Interior - rear



Figure 7: Instrument cluster



Figure 8: Instrument panel



Figure 9: interior 360° view



Figure 10: Cargo area

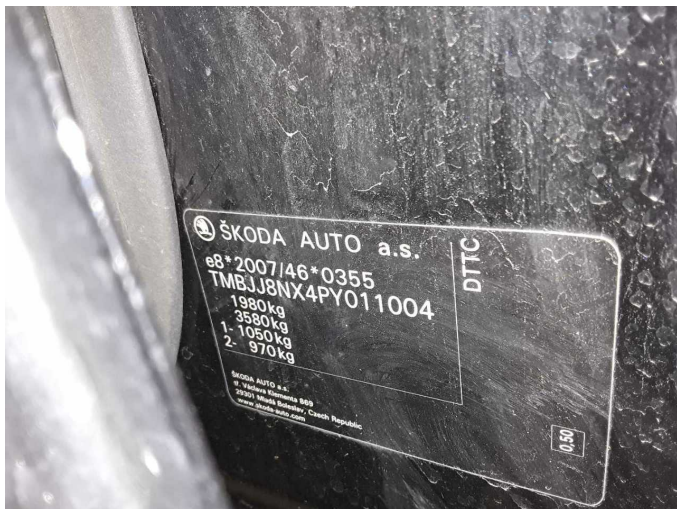


Figure 11: VIN



Figure 12: Mounted tyres



Figure 13: Documents



Figure 14: Documents

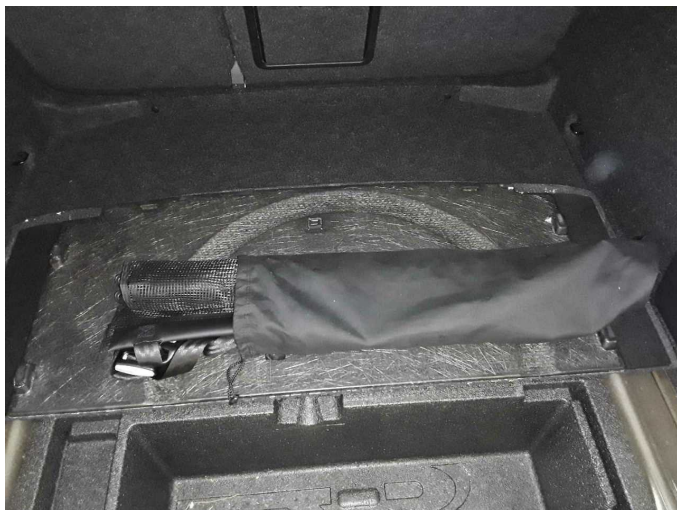
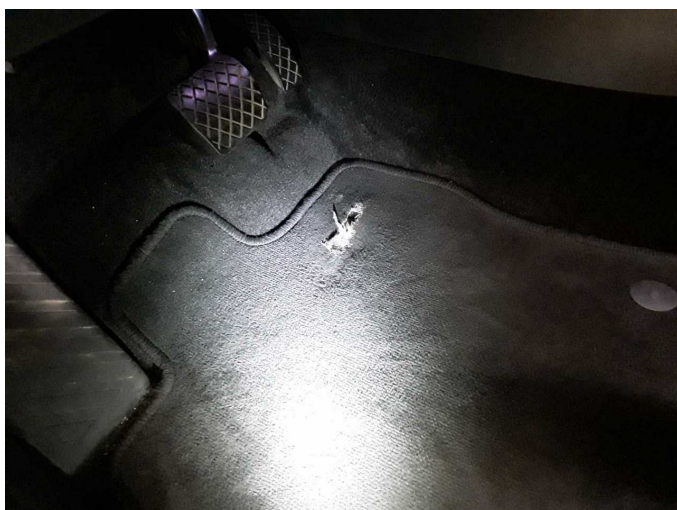


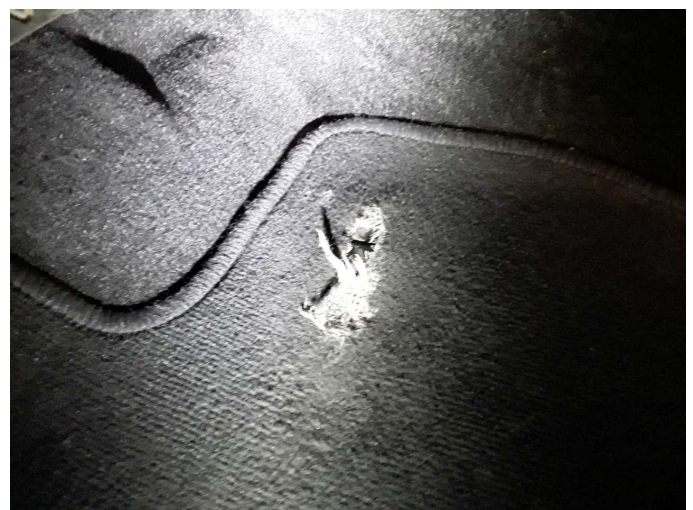
Figure 15: Misc.



Figure 16: Misc.



Damage 2: Trim / covers: Floor mats - Broken / torn - Replace



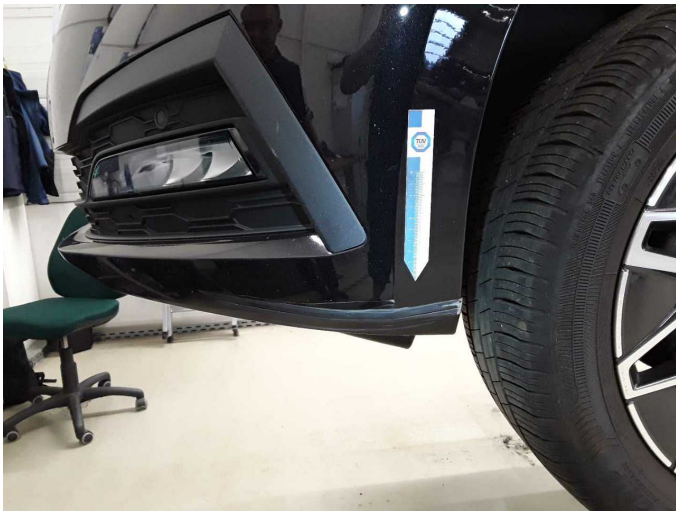
Damage 2: Trim / covers: Floor mats - Broken / torn - Replace



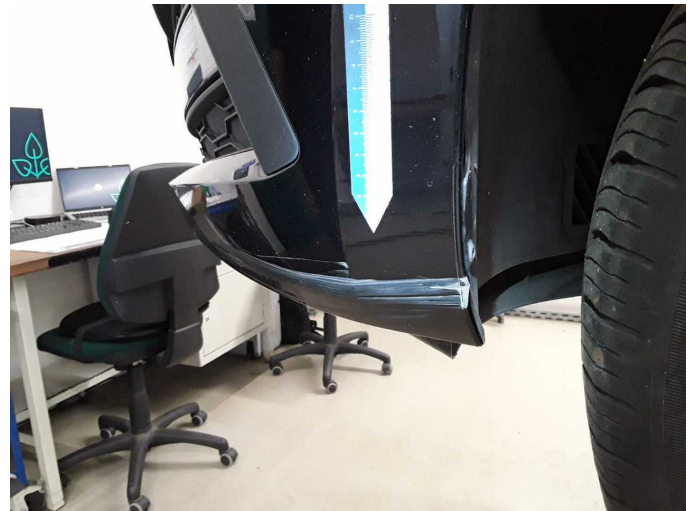
Damage 3: Bonnet: Insulation lining - Broken / torn - Replace



Damage 3: Bonnet: Insulation lining - Broken / torn - Replace



Damage 4: Front bumper: Front bumper - Scratched - Smart repair



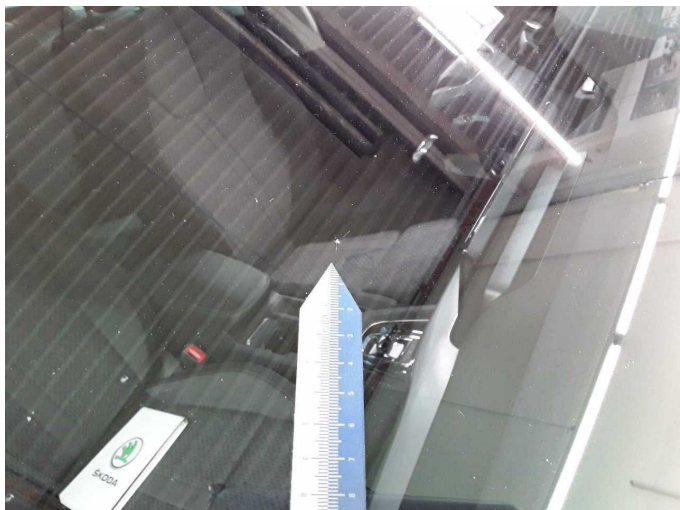
Damage 4: Front bumper: Front bumper - Scratched - Smart repair



Damage 5: Vehicle glazing: Windscreen - Stone chips - Replace



Damage 5: Vehicle glazing: Windscreen - Stone chips - Replace



Damage 5: Vehicle glazing: Windscreen - Stone chips - Replace



Wartungshistorie

(gemäß Auftraggeber Informationen)

Fahrgestellnummer: TMBJJ8NX4PY011004

Hersteller / Modell: SKODA SKODA Octavia Combi 2.0 TDI DSG Clever

Datum	KM-Stand	Beschreibung
05.03.2025	118.909	Getriebeöl ern/prüfen; Luftfiltereinsatz ern; Motoröl b. Wartung; Ölfilter ern; Regelwartungsdienst; Systemtest/Eigendiagnose; Wartung Sonstiges
29.08.2024	88.883	Bremse Sonstiges; Bremsflüssigkeit; Bremsflüssigkeit ern; Bremsklötze hinten; Bremsklötze vorne; Bremsscheiben + Klötze h; Bremsscheiben + Klötze v; Bremsscheiben hinten; Bremsscheiben vorne; Kraftstofffilter ern; Motoröl b. Wartung; Ölfilter ern; Regelwartungsdienst; Reparatur Sonstiges; Wartung Sonstiges
13.12.2023	59.916	Motoröl b. Wartung; Ölfilter ern; Regelwartungsdienst; Wartung Sonstiges
08.05.2023	29.647	Motoröl b. Wartung; Regelwartungsdienst