



Expertise

Protocol number: 41262545  
Order No. / Reference: 25145562  
Inspection date: 26 Aug 2025

Manufacturer: Skoda  
VIN: TMBJJ8NX0NY010641

Model: Octavia Combi 2.0 TDI Clever



Vehicle details	
Manufacturer / Type / Model / Equipment	
Skoda Octavia Combi 2.0 TDI Clever	
Vehicle Identification number	TMBJJ8NX0NY010641
Mileage (Read)	175,910 km
First registration	30 Aug 2021
Number of holders	2
Next periodical technical inspection	12/2026
(Report on hand)	
Power / Engine displacement	110 kw / 1,968 ccm
Fuel type / Cylinder	Diesel / 4
Gearbox / Number of gears	Manual / 6
Type of drive	Front drive
Type of vehicle	Station wagon
Colour / colour code	Brilliant-Silber Metallic
Doors / Seats	5 / 5
Upholstery type	Cloth
Colour of upholstery	Black



## Vehicle details

<b>Maintenance booklet / proof</b>	digital proof / incomplete	<b>Next maintenance in</b>	12,500 km
<b>Last maintenance on / at</b>	02/2025 at 158,898 km		
<b>Key is / should be</b>	2 / 2	<b>FZG documents</b>	ZB#2 (B) was available (copy), ZB#1 (S) was not available
		<b>Letter No.</b>	GD065165
<b>Previous damage / Accident</b>	None detectable	<b>Repainting</b>	None detectable
<b>Inspection conditions</b>	sufficient	<b>Lifting equipment / pit</b>	yes
<b>Test drive</b>	Not performed	<b>Engine function test</b>	Performed
<b>Manufacturer key number/ type code number</b>	8004 / AWL 00085		
<b>Emission standard</b>	EURO6;WLTP;AP;PI/CI; M, N1 I	<b>Fine dust sticker</b>	
<b>Permitted total weight</b>	1,960 kg	<b>Empty weight</b>	

## Tyres

### Mounted tyres

#	Tyre size	Type of tyre	Manufacturer	Tread depth
1)	205/55 R17 91V	Summer tyres on Light alloy	Continental	5mm / 5mm
2)	205/55 R17 91V	Summer tyres on Light alloy	Continental	5mm / 5mm

### Additional tyres

#	Tyre size	Type of tyre	Manufacturer	Tread depth
1)	205/60 R16 92H	Winter tyres on Light alloy	Goodyear	5mm / 5mm
2)	205/60 R16 92H	Winter tyres on Light alloy	Goodyear	5mm / 5mm

### Replacement

Typ	Tyre size	Type of tyre	Manufacturer	Tread depth
	Tirefit	Expiration date 05/2025		

**Legend:** Tread depth information for tires on the left is in the first place, for tires on the right is in the second place on the axle in the direction of travel



## Equipment

### Standard equipment

- Cornering light integrated in fog lights
- Shelves
- Airbag, driver and passenger
- Airbag, head airbags
- Airbag: Center airbag front
- Trailer coupling preparation including trailer stabilization
- Anti-lock braking system (ABS)
- Exterior mirrors electrically adjustable and heated
- Heated windscreen washer nozzles including 5l washer fluid reservoir
- Glasses compartment on the roof lining
- Roof rails, black
- diesel particulate filter
- Third brake light
- Electronic transverse differential lock (XDS+)
- Driving light assistant
- High beam assistant
- Front radar assistant including city emergency braking function and person and cyclist detection
- Tinted windows
- Heated rear window
- Rear window wiper including windscreen washer system
- ISOFIX preparations on the front passenger seat and the outer rear seats including top tether anchorage
- Removable trunk cover
- LED fog lights
- LED license plate lighting
- Remote release of the rear seat backrests in the trunk
- Steering wheel: height and length adjustable
- Steering wheel: Leather steering wheel with multifunction buttons
- Front center armrest, including storage compartment
- Multifunction display in the instrument cluster
- Upholstery: Cloth
- Radio accessories: 2 USB-C ports at the front
- Radio accessories: 8 speakers
- Radio accessories: Digital radio reception DAB+
- Radio accessories: voice control
- Tire pressure monitoring
- Wheels: 17" Pulsar AERO alloy wheels, black, high-sheen
- Power steering, electromechanical
- Safety lights in the front side doors
- Seats: Height-adjustable driver and passenger seats
- Seats: Rear seat backrest 60:40 split folding
- Speed limiter
- 12-V socket in the trunk
- Phone: Wireless SmartLink for Apple CarPlay
- Lashing eyes in the trunk
- Storage compartment in the luggage compartment with cargo element
- Airbag, driver's knee airbag
- Airbag, front side airbags
- Ambient lighting
- Extended warranty for 3 years, max. 50,000 km
- Traction control (ASR)
- Exterior mirrors, electrically folding
- hill start assist including auto-hold function
- Hydraulic brake assist (HBA)
- Grey headliner
- Decorative strip in silver feel with ambient lighting
- tachometer
- Electronic parking brake
- Electronic Stabilization Control (ESC)
- Electric windows front and rear, including anti-pinch protection and child safety lock
- Cruise control system
- Transmission: 6-speed manual transmission
- Green tec: Automatic start/stop system including brake energy recovery
- Interior mirror automatically dimming
- Electronic child lock
- Climatronic air conditioning (3 zones)
- Headrests (5) front and rear height adjustable
- LED taillights in crystal glass look and animated indicators
- LED headlights with LED daytime running lights
- Steering wheel: Heated steering wheel including heated front seats
- Manual headlight range adjustment
- Rear center armrest with through-loading option
- Engine drag torque control (MSR)
- Parking sensors front and rear
- Radio: Bolero music system with capacitive 10" color display
- Radio accessories: Bluetooth hands-free system
- Radio accessories: SmartLink
- Rain sensor
- Tire mobility set
- Rear view camera
- Seat belts
- Seats: Heated rear seats
- Seats: Manually adjustable ergonomic seats in the front
- SKODA Care Connect
- Lane keeping assistant (Lane Assist)
- 230 V socket and USB charging port
- Glazing: Acoustic glazing in the front side windows and Sunset
- Central locking including radio remote control integrated in the key and EASY Start



- Immobiliser

#### Extra equipment

- Deselecting the extended warranty
- Rubber floor mat set
- Package: Columbus infotainment package (Columbus navigation system - Infotainment Online (3-year term) - Digital instrument cluster (Virtual Cockpit) - Phonebox - KESSY (keyless entry and start-stop system))
- Luggage net partition
- Paint finish: metallic
- Universal holder for multimedia devices
- Winter complete wheel set 16 inches

#### Brief expert findings

Documents submitted	At the time of the inspection, the registration certificate Part 2 (letter) was available, but the registration certificate Part 1 (certificate) was not. (Copy)
VIN comparison	The vehicle identification number (VIN) was read from the vehicle and its conformity with the submitted documents was verified during the inspection by the undersigned.
Inspection	The inspection conditions were sufficient for the assessment of the vehicle. Lifting equipment and a pit were available for examining the vehicle.
Test drive	No test drive/maneuvering was carried out during the inspection of the vehicle.
Engine function test	An engine test run was performed.

#### Value reducing factors

No.	Component group	Description
1	Equipment	Tirefit filler - Expired - Replace
2	Door - front left side	Door edge - Scratch(es) - Smart repair
3	Wheel / tyres	Alloy rim - rear right side - Scratch(es) - Loss in value
4	Rear bumper	Rear bumper - Scratch(es) - Paint
5	Bonnet	Bonnet - Dent / paintcoat damage - Repair and paint

#### Wear and tear

No.	Component group	Description
1	Vehicle glazing	Windscreen - Stone chips - No deduction
2	Front bumper	Front bumper - Stone chips - No deduction
3	Interior	Interior - Scratch(es) - No deduction

The vehicle shows signs of wear commensurate with its age and use.

#### Order/Scope of order

The order was placed to prepare a sales report for the vehicle described. This includes the following:

- Description of core relevant information about the vehicle
- Documentation of equipment features  
(Delivery by third-party service providers)
- Documentation of damage, defects, missing parts
- Documentation of previous damage, unrepaired previous damage, repainting
- a brief visual or functional inspection of the equipment details if possible.  
(Functional tests of driver assistance systems are not included in the scope of services!)
- a photo documentation of the vehicle



## Basis for the order

This product is based on the Alphabet Fuhrpark GmbH guidelines for vehicle returns and valuations. The expert makes the explicit findings in each individual case objectively within the framework of the specified standards based on his or her own expertise.

The vehicle inspection takes place in a disassembled state.

Damage or defects that can only be detected during disassembly/diagnosis work or through advanced knowledge remain within the scope of the prognosis risk. An extended risk exists for concealed defects caused by fraudulent deception and not identifiable by the expert.

Damage or defects resulting from normal use or wear and tear of the vehicle will be accepted according to the applicable standard.

There was no explicit identification or monetary consideration of the expected features within the product.

Features which in their nature and severity slightly exceed normal use but do not constitute unacceptable damage will be documented and identified under signs of use if necessary.

Damage or defects which, according to the underlying standard, can no longer be attributed to normal use or wear and tear are listed in the product under "Depreciating Factors".

Depending on the product specification, a monetary ID can be provided. If this takes place, the costs can be 100% d or pro rata depending on the vehicle's age and mileage.

## Previous damages

Apparently, no repaired previous damage could be found on the vehicle.





**Figure 1:** Diagonal front (left)



**Figure 2:** Diagonal front (right)



**Figure 3:** Diagonal rear (left)



**Figure 4:** Diagonal rear (right)



**Figure 5:** Interior - front



**Figure 6:** Interior - rear





Figure 7: Instrument cluster



Figure 8: Instrument panel



Figure 9: interior 360° view ([Online link](#))



Figure 10: Cargo area



Figure 11: VIN



Figure 12: Mounted tyres

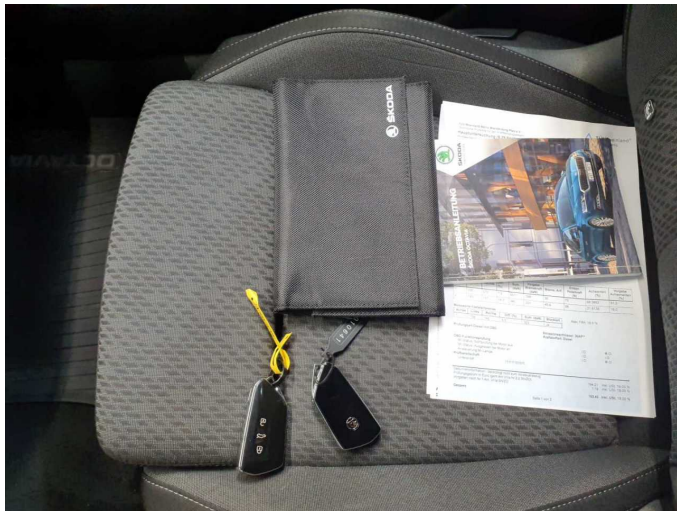


Figure 13: Documents



Figure 14: Documents

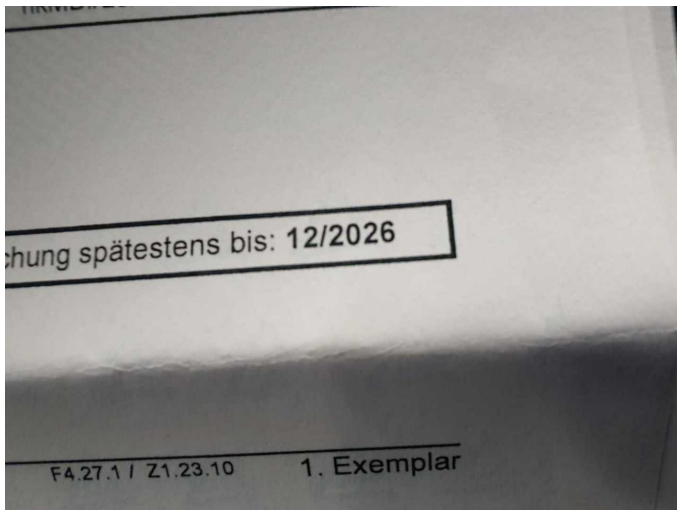


Figure 15: Documents

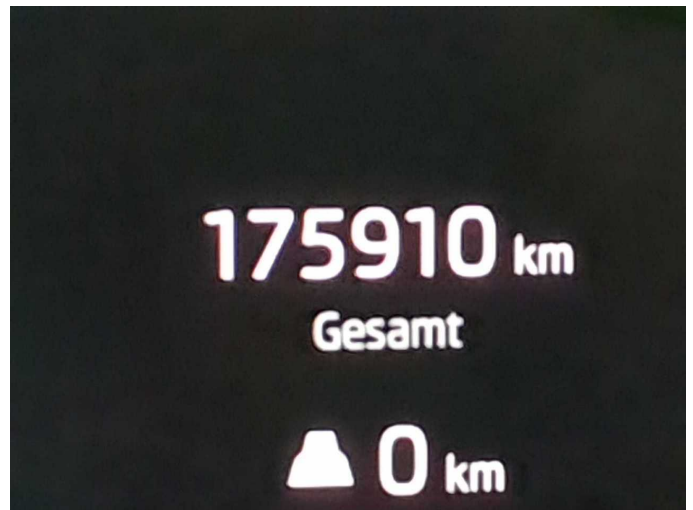


Figure 16: Documents



Figure 17: Additional tyres



Figure 18: Additional tyres





Figure 19: Navigation



Figure 20: Misc.



Figure 21: Misc.



Figure 22: Misc.



Figure 23: Misc.



Figure 24: Misc.





Figure 25: Misc.



Figure 26: Misc.



Figure 27: Misc.



Figure 28: Misc.



Damage 1: Equipment: Tirefit filler - Expired - Replace



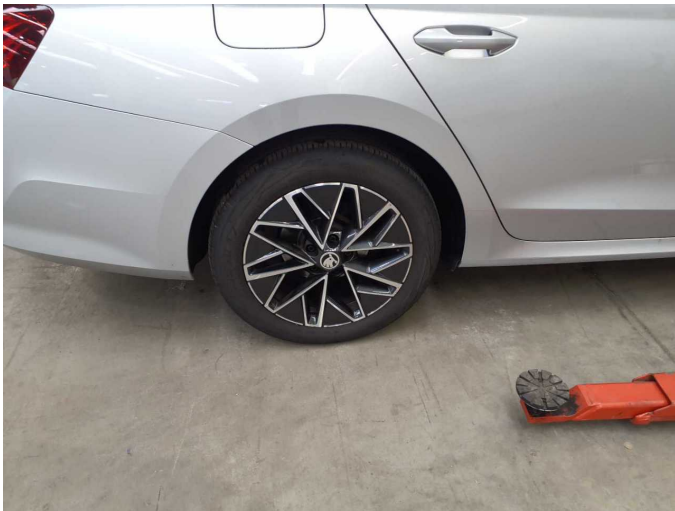
Damage 2: Door - front left side: Door edge - Scratch(es) - Smart repair



**Damage 2:** Door - front left side: Door edge - Scratch(es) - Smart repair



**Damage 3:** Wheel / tyres: Alloy rim - rear right side - Scratch(es) - Loss in value



**Damage 3:** Wheel / tyres: Alloy rim - rear right side - Scratch(es) - Loss in value



**Damage 4:** Rear bumper: Rear bumper - Scratch(es) - Paint



**Damage 4:** Rear bumper: Rear bumper - Scratch(es) - Paint



**Damage 5:** Bonnet: Bonnet - Dent / paintcoat damage - Repair and paint





**Damage 5:** Bonnet: Bonnet - Dent / paintcoat damage - Repair and paint



**Damage 5:** Bonnet: Bonnet - Dent / paintcoat damage - Repair and paint



# Wartungshistorie

(gemäß Auftraggeber Informationen)

Fahrgestellnummer: TMBJJ8NX0NY010641  
Hersteller / Modell: SKODA SKODA Octavia Combi 2.0 TDI Clever

Datum	KM-Stand	Beschreibung
25.02.2025	158.898	Bremse Sonstiges; Bremsklötze hinten; Bremsscheiben hinten; Motoröl b. Wartung; Ölfilter ern; Regelwartungsdienst; Wartung Sonstiges
27.06.2024	129.592	Motoröl b. Wartung; Ölfilter ern; Regelwartungsdienst; Wartung Sonstiges
06.10.2023	93.807	Bremsflüssigkeit; Bremsflüssigkeit ern; Kraftstofffilter ern; Luftfiltereinsatz ern; Motoröl b. Wartung; Ölfilter ern; Regelwartungsdienst; Systemtest/ Eigendiagnose; Wartung Sonstiges
17.02.2023	65.195	Motoröl b. Wartung; Regelwartungsdienst
24.05.2022	32.015	Motoröl b. Wartung; Regelwartungsdienst