



Expertise

Protocol number: 41592779
Order No. / Reference: 25137423
Inspection date: 16 Sept 2025

Manufacturer: Skoda	Model: Octavia Combi 2.0 TDI DSG First Edition
VIN: TMBJJ7NXXLY035957	



Vehicle details	
Manufacturer / Type / Model / Equipment	
Skoda Octavia Combi 2.0 TDI DSG First Edition	
Vehicle Identification number	TMBJJ7NXXLY035957
Mileage (Read)	147,786 km
First registration	4 Sept 2020
Number of holders	1
Next periodical technical inspection	10/2025
(Report not on hand)	
Power / Engine displacement	110 kw / 1,968 ccm
Fuel type / Cylinder	Diesel / 4
Gearbox / Number of gears	Automatic / 7
Type of drive	Front drive
Type of vehicle	Station wagon
Colour / colour code	Black-Magic Perleffekt
Doors / Seats	5 / 5
Upholstery type	Cloth
Colour of upholstery	Black-Anthracite



Vehicle details

Maintenance booklet / proof	digital proof / complete	Next maintenance in	4,800 km
Last maintenance on / at	03/2024 at 122,536 km		
Key is / should be	2 / 2	FZG documents	ZB#2 (B) was available (copy), ZB#1 (S) was not available
		Letter No.	FU129707
Previous damage / Accident	None detectable	Repainting	None detectable
Inspection conditions	sufficient	Lifting equipment / pit	yes
Test drive	Not performed	Engine function test	Performed
Manufacturer key number/ type code number	8004 / AVG 00010		
Emission standard	EURO6;WLTP;DG;PI/CI; M, N1 I	Fine dust sticker	
Permitted total weight	1,990 kg	Empty weight	

Tyres

Mounted tyres

#	Tyre size	Type of tyre	Manufacturer	Tread depth
1)	205/55 R17 91V	Summer tyres on Light alloy	Pirelli	5mm / 5mm
2)	205/55 R17 91V	Summer tyres on Light alloy	Pirelli	5mm / 5mm

Additional tyres

#	Tyre size	Type of tyre	Manufacturer	Tread depth
1)	205/60 R16 96H	Winter tyres on Light alloy	Continental	5mm / 5mm
2)	205/60 R16 96H	Winter tyres on Light alloy	Continental	5mm / 5mm

Replacement

Typ	Tyre size	Type of tyre	Manufacturer	Tread depth
	Tirefit	Expiration date 06/2024		

Legend: Tread depth information for tires on the left is in the first place, for tires on the right is in the second place on the axle in the direction of travel

Equipment

Standard equipment

- Shelves
- Airbag, driver's knee airbag
- Airbag, front side airbags
- Traction control (ASR)
- Automatically dimming exterior mirror (driver's side)
- Exterior mirrors with memory function
- Heated windscreen washer nozzles including 5l washer fluid reservoir
- headliner in grey
- diesel particulate filter
- tachometer
- Electronic parking brake
- Electronic Stabilization Control (ESC)
- Driving profile selection
- Front radar assistant including city emergency braking function with person detection
- Transmission: 7-speed direct shift gearbox (DSG)
- Green tec: Automatic start/stop system including brake energy recovery
- Rear window wiper including windscreen washer system
- ISOFIX preparations on the front passenger seat and the outer rear seats including top tether anchorage
- Electronic child lock
- Removable trunk cover
- LED fog lights
- LED rear lights
- Remote release of the rear seat backrests in the trunk
- Steering wheel: Leather steering wheel with multifunction buttons with shift paddles
- Front center armrest, including storage compartment
- Engine drag torque control (MSR)
- Parking sensors front and rear
- Upholstery: Cloth
- Radio accessories: 8 speakers
- Radio accessories: voice control
- Tire pressure monitoring
- Wheels: 17" Rotare AERO alloy wheels
- Seat belts
- Seats: Heated front seats
- Seats: Height-adjustable driver and passenger seats
- Seats: Rear seat backrest 60:40 split folding
- SKODA Infotainment Online
- Lane keeping assistant (Lane Assist)
- 12-V socket in the trunk
- Telephone: Phonebox with inductive charging function (connection via the external antenna)
- Bluetooth hands-free phone system
- Airbag, driver and passenger
- Airbag, head airbags
- Anti-lock braking system (ABS)
- Dashboard center section with fabric cover
- Exterior mirrors electrically adjustable and heated
- Exterior mirrors, electrically folding
- Hill start assist including auto-hold function
- Hydraulic brake assist (HBA)
- Roof rails, anodized
- Digital instrument cluster (Virtual Cockpit) 10.2"
- Third brake light
- Electronic transverse differential lock (XDS+)
- Driving light assistant
- Electric windows front and rear, including anti-pinch protection and child safety lock
- Cruise control system
- Tinted windows
- Taillights in crystal glass look and animated indicators
- Heated rear window
- Interior mirror automatically dimming
- KESSY (Keyless Access and Start-Stop System)
- Child safety locks on the rear doors
- Climatronic air conditioning (2 zones)
- Headrests (5) front and rear height adjustable
- LED ambient lighting
- LED headlights with LED daytime running lights
- Steering wheel: height and length adjustable
- Manual headlight range adjustment
- Rear center armrest with cup holders and through-loading option
- Columbus navigation system with capacitive 10" color display
- Radio accessories: 2 USB-C ports at the front
- Radio accessories: Digital radio reception DAB+
- Rain sensor
- Tire mobility set
- Power steering, electromechanical
- Safety lights in the front side doors
- Seats: Electrically adjustable front seats with memory function
- SKODA Care Connect
- Speed limiter
- Lane change and rear traffic assistant as well as exit warning
- Phone: SmartLink (MirrorLink, Apple CarPlay, Android Auto)
- Phone: Wireless SmartLink for Apple CarPlay
- Lashing eyes in the trunk
- Central locking including remote control integrated in the key and EASY Start



- Immobiliser

Extra equipment

- Finish: pearl effect
- Package: Travel (DSG) (Traveler assistance system: - Traffic sign recognition - Predictive and adaptive cruise control (pACC) - Adaptive lane keeping assistant - Emergency and traffic jam assistant - Capacitive steering wheel with hands-off detection - Adaptive cruise control (ACC) (control range 210 km/h) - Drowsiness detection - Driving profile selection - Automatically dimming exterior mirror (driver's side))
- Trailer coupling, pivoting including trailer stabilization and adapter
- Chassis: Chassis lift (15 mm increased ground clearance - modified damper tuning - engine underbody protection)
- Comfort opening including electric tailgate operation
- Electric panoramic sunroof (no glasses compartment on the roof lining)
- Heated windshield
- Luggage net partition
- Package: Parking & View
- Sunset (rear window and rear side windows dark tinted)

Brief expert findings

Documents submitted	At the time of the inspection, the registration certificate Part 2 (letter) was available, but the registration certificate Part 1 (certificate) was not. (Copy)
VIN comparison	The vehicle identification number (VIN) was read from the vehicle and its conformity with the submitted documents was verified during the inspection by the undersigned.
Inspection	The inspection conditions were sufficient for the assessment of the vehicle. Lifting equipment and a pit were available for examining the vehicle.
Test drive	No test drive/maneuvering was carried out during the inspection of the vehicle.
Engine function test	An engine test run was performed.

Value reducing factors

No.	Component group	Description
1	Misc.	Main inspection - No evidence - No deduction
2	Equipment	Vehicle key (Batterie) - Empty - Replace
3	Equipment	Tirefit filler - Expired - Replace
4	Trim / covers	Floor mats - Damaged - Replace
5	Side panel - rear right side	Side panel - Scratched - Smart repair
6	Steering system	Steering wheel - Scratched - Smart repair
7	Boot lid / rear door	Boot lid - Scratched - Smart repair
8	Side panel - rear left side	Side panel - dent(s) - Smooth repair work
9	Wheel / tyres	Wheel rim - rear left side - Scratched - Loss in value
10	Trim / covers	Cargo area - lining -left side - Scratched - Replace
11	Trim / covers	Cargo area - lining - right side - Scratched - Replace
12	Braking system	Brake discs - rear (Tragbild mangelhaft, Rostrand) - Corrosion - Replace
13	Rear bumper	Rear bumper - Scratched - Paint
14	Braking system	Brake discs - front (Tragbild mangelhaft, Rostrand) - Corrosion - Replace
15	Front bumper	Front bumper (Steinschlag, und Blende) - Scratched - Repair and paint
16	Bonnet	Bonnet (Korrosion) - Stone chips - Repair and paint
17	Vehicle glazing	Windscreen (Sandstrahleffekt, Blendwirkung) - Stone chips - repair according to calculation

Wear and tear

No.	Component group	Description
1	Headlight	Headlight - right side - Stone chips - No deduction
2	Headlight	Headlight - left side - Stone chips - No deduction



No.	Component group	Description
3	Door - front left side	Door edge - Scratched - No deduction
4	Boot lid / rear door	Boot lid - Scratch(es) - No deduction
5	Mudguard - right side	Mudguard - right side - Stone chips - No deduction
6	Body	Body (oberflächlich) - Scratch(es) - No deduction
7	Interior	Cargo area floor - Scratched - No deduction
8	Trim / covers	Boot lid - interior trim - Scratched - No deduction
9	Interior	Interior - Scratch(es) - No deduction

The vehicle shows signs of wear commensurate with its age and use.

Order/Scope of order

The order was placed to prepare a sales report for the vehicle described. This includes the following:

- Description of core relevant information about the vehicle
- Documentation of equipment features
(*Delivery by third-party service providers*)
- Documentation of damage, defects, missing parts
- Documentation of previous damage, unrepaired previous damage, repainting
- a brief visual or functional inspection of the equipment details if possible.
(*Functional tests of driver assistance systems are not included in the scope of services!*)
- a photo documentation of the vehicle

Basis for the order

This product is based on the Alphabet Fuhrpark GmbH guidelines for vehicle returns and valuations. The expert makes the explicit findings in each individual case objectively within the framework of the specified standards based on his or her own expertise.

The vehicle inspection takes place in a disassembled state.

Damage or defects that can only be detected during disassembly/diagnosis work or through advanced knowledge remain within the scope of the prognosis risk. An extended risk exists for concealed defects caused by fraudulent deception and not identifiable by the expert.

Damage or defects resulting from normal use or wear and tear of the vehicle will be accepted according to the applicable standard.

There was no explicit identification or monetary consideration of the expected features within the product.

Features which in their nature and severity slightly exceed normal use but do not constitute unacceptable damage will be documented and identified under signs of use if necessary.

Damage or defects which, according to the underlying standard, can no longer be attributed to normal use or wear and tear are listed in the product under "Depreciating Factors".

Depending on the product specification, a monetary ID can be provided. If this takes place, the costs can be 100% d or pro rata depending on the vehicle's age and mileage.

Previous damages

Apparently, no repaired previous damage could be found on the vehicle.



Figure 1: Diagonal front (left)



Figure 2: Diagonal front (right)



Figure 3: Diagonal rear (left)



Figure 4: Diagonal rear (right)



Figure 5: Interior - front



Figure 6: Interior - rear



Figure 7: Instrument cluster



Figure 8: Instrument panel



Figure 9: Interior 360° view ([Online link](#))



Figure 10: Cargo area

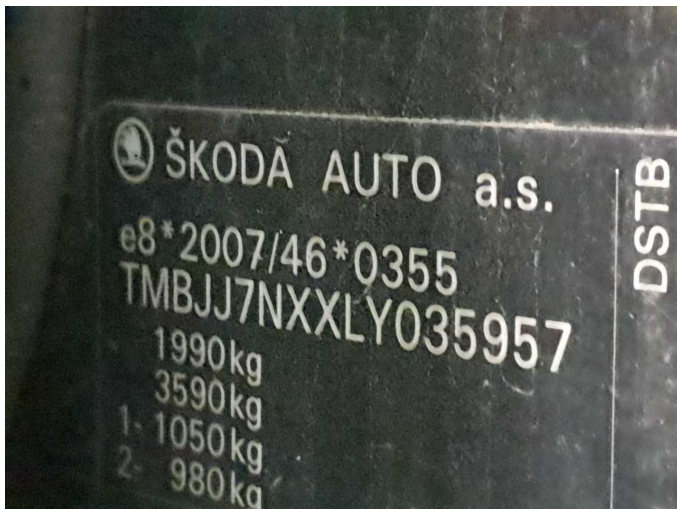


Figure 11: VIN



Figure 12: Mounted tyres



Figure 13: Documents



Figure 14: Additional tyres



Figure 15: Navigation



Figure 16: Misc.



Figure 17: Misc.



Figure 18: Misc.



Figure 19: Misc.



Figure 20: Misc.



Figure 21: Misc.



Figure 22: Misc.



Figure 23: Misc.

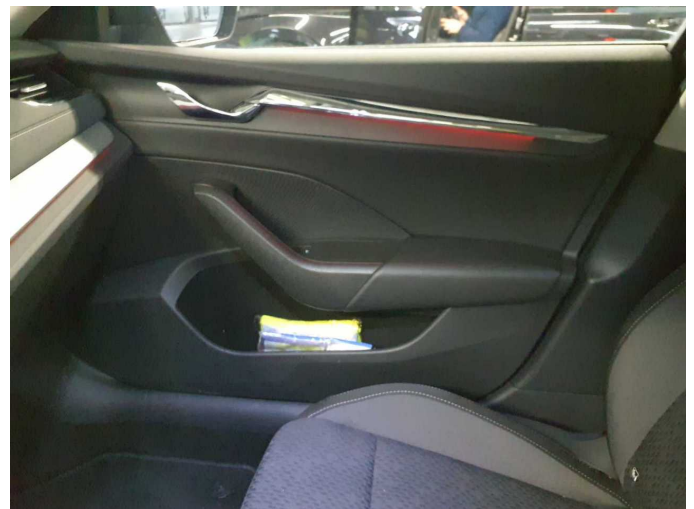


Figure 24: Misc.



Figure 25: Misc.



Figure 26: Misc.

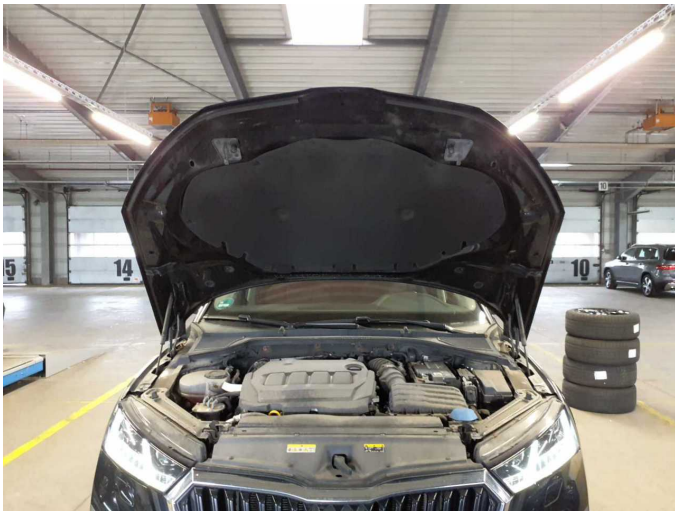


Figure 27: Misc.



Figure 28: Misc.



Figure 29: Misc.



Figure 30: Misc.



Figure 31: Misc.



Figure 32: Misc.

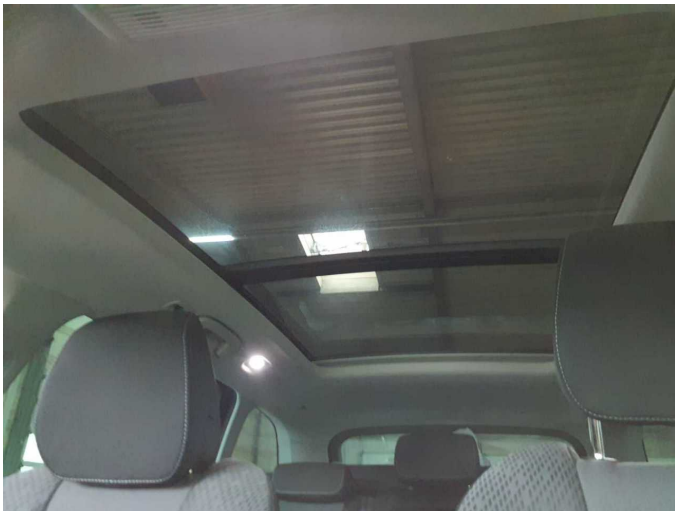
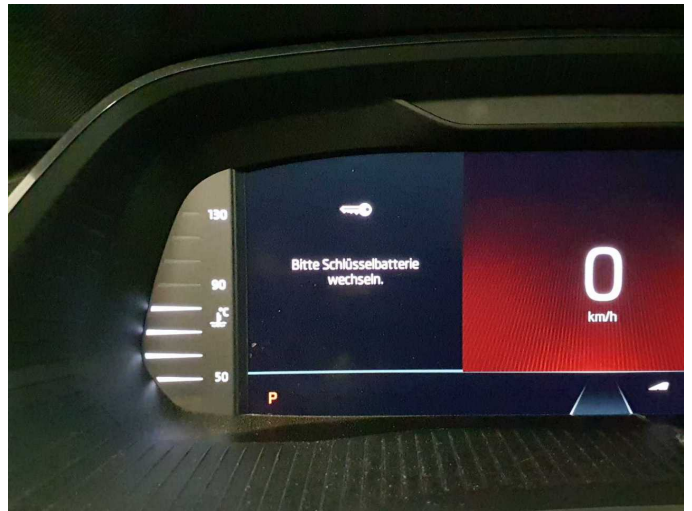
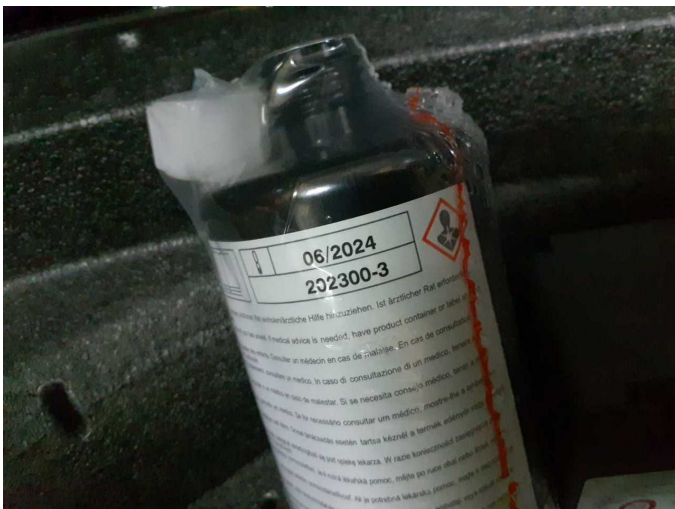


Figure 33: Misc.



Damage 2: Equipment: Vehicle key (Batterie) - Empty - Replace



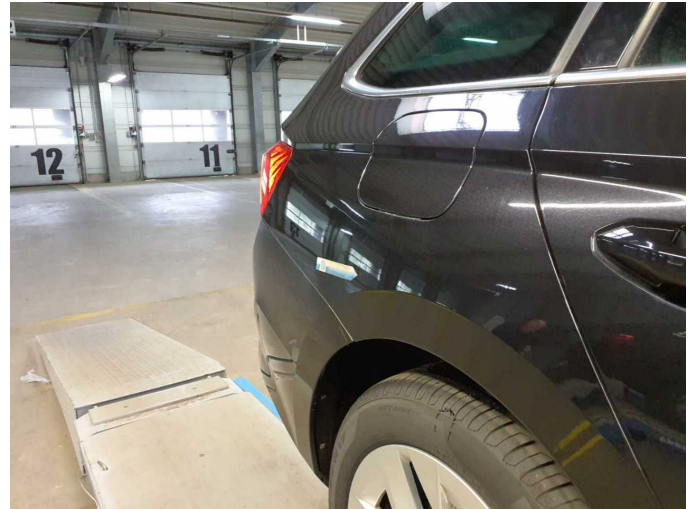
Damage 3: Equipment: Tirefit filler - Expired - Replace



Damage 4: Trim / covers: Floor mats - Damaged - Replace



Damage 4: Trim / covers: Floor mats - Damaged - Replace



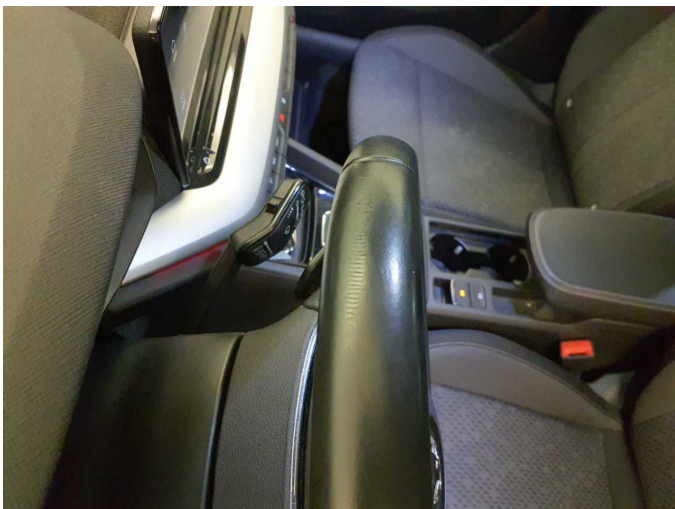
Damage 5: Side panel - rear right side: Side panel - Scratched - Smart repair



Damage 5: Side panel - rear right side: Side panel - Scratched - Smart repair



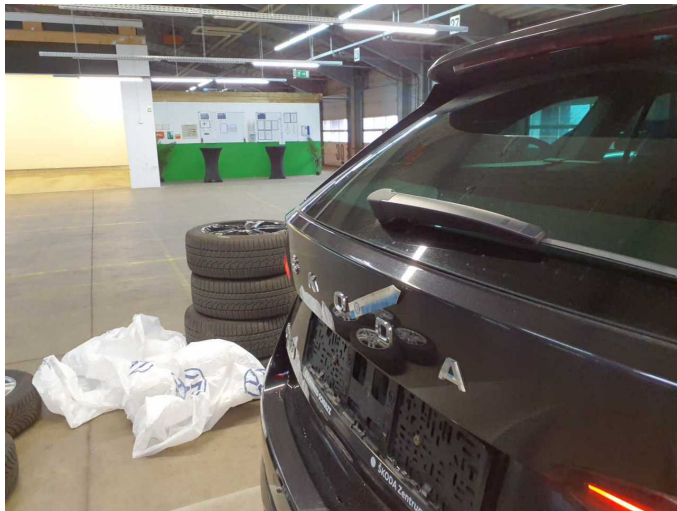
Damage 5: Side panel - rear right side: Side panel - Scratched - Smart repair



Damage 6: Steering system: Steering wheel - Scratched - Smart repair



Damage 6: Steering system: Steering wheel - Scratched - Smart repair



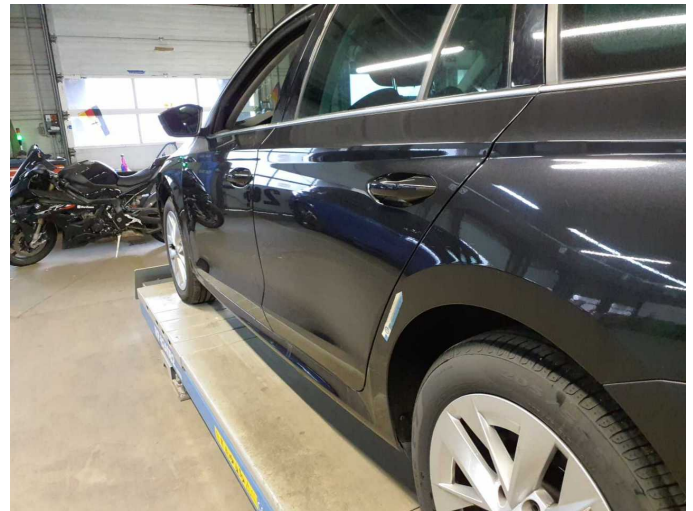
Damage 7: Boot lid / rear door: Boot lid - Scratched - Smart repair



Damage 7: Boot lid / rear door: Boot lid - Scratched - Smart repair



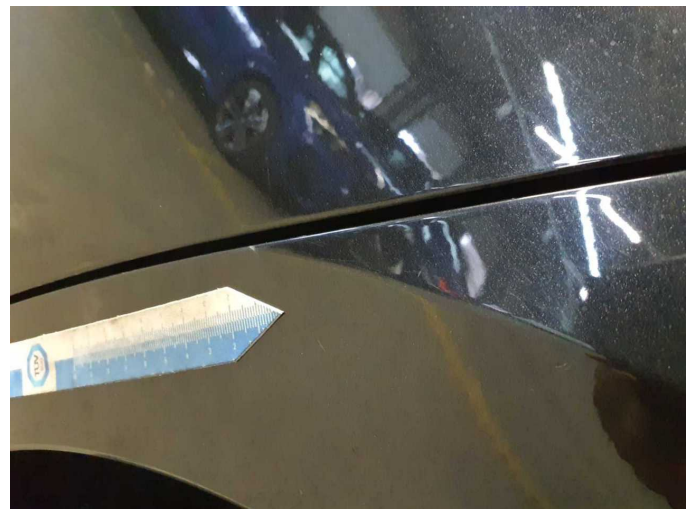
Damage 7: Boot lid / rear door: Boot lid - Scratched - Smart repair



Damage 8: Side panel - rear left side: Side panel - dent(s) - Smooth repair work



Damage 8: Side panel - rear left side: Side panel - dent(s) - Smooth repair work



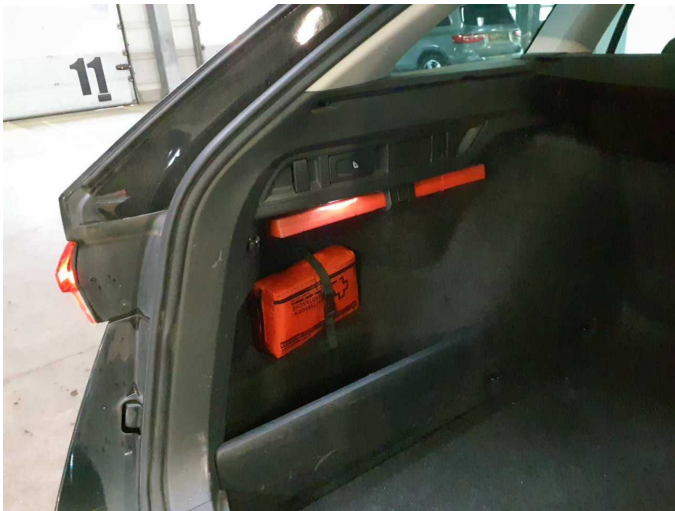
Damage 8: Side panel - rear left side: Side panel - dent(s) - Smooth repair work



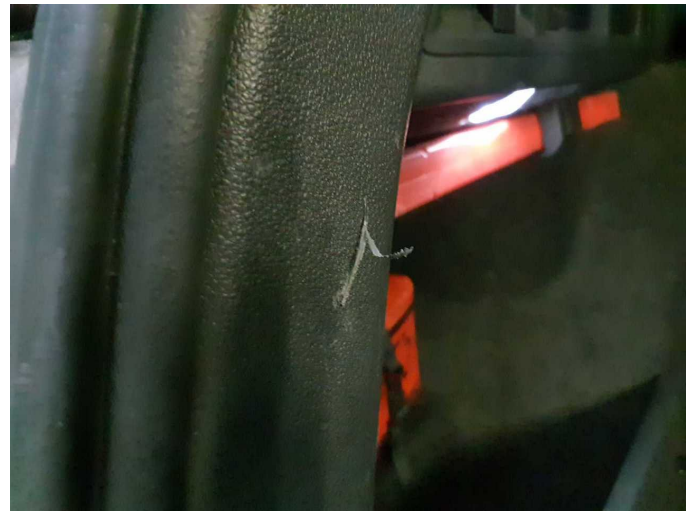
Damage 9: Wheel / tyres: Wheel rim - rear left side - Scratched - Loss in value



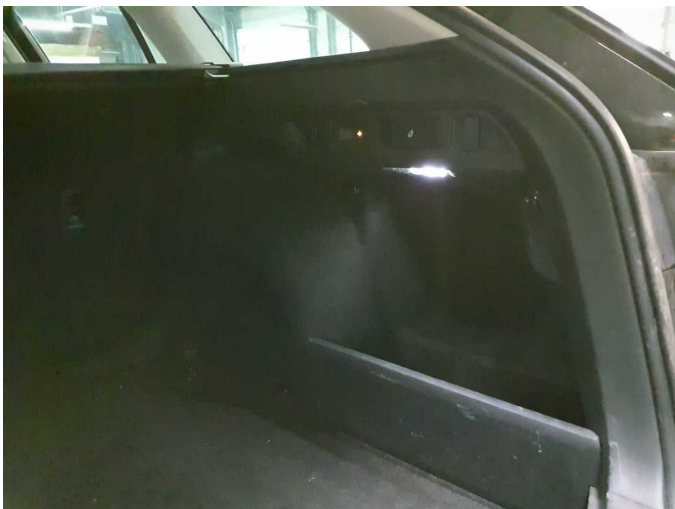
Damage 9: Wheel / tyres: Wheel rim - rear left side - Scratched - Loss in value



Damage 10: Trim / covers: Cargo area - lining -left side - Scratched - Replace



Damage 10: Trim / covers: Cargo area - lining -left side - Scratched - Replace



Damage 11: Trim / covers: Cargo area - lining - right side - Scratched - Replace



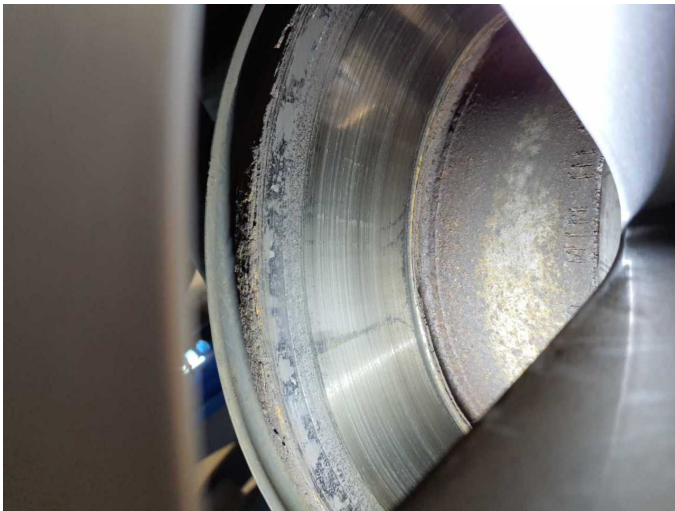
Damage 11: Trim / covers: Cargo area - lining - right side - Scratched - Replace



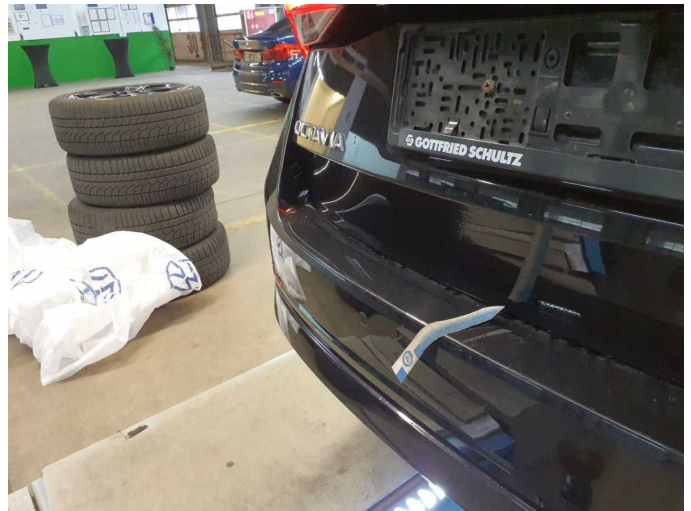
Damage 12: Braking system: Brake discs - rear (Tragbild mangelhaft, Rostrand) - Corrosion - Replace



Damage 12: Braking system: Brake discs - rear (Tragbild mangelhaft, Rostrand) - Corrosion - Replace



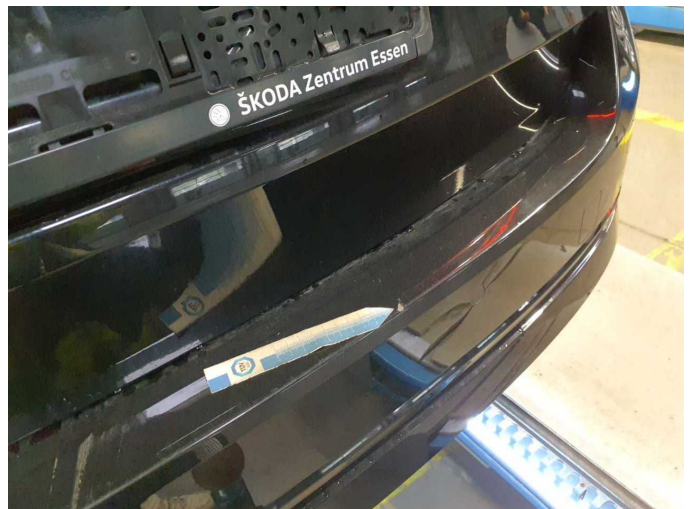
Damage 12: Braking system: Brake discs - rear (Tragbild mangelhaft, Rostrand) - Corrosion - Replace



Damage 13: Rear bumper: Rear bumper - Scratched - Paint



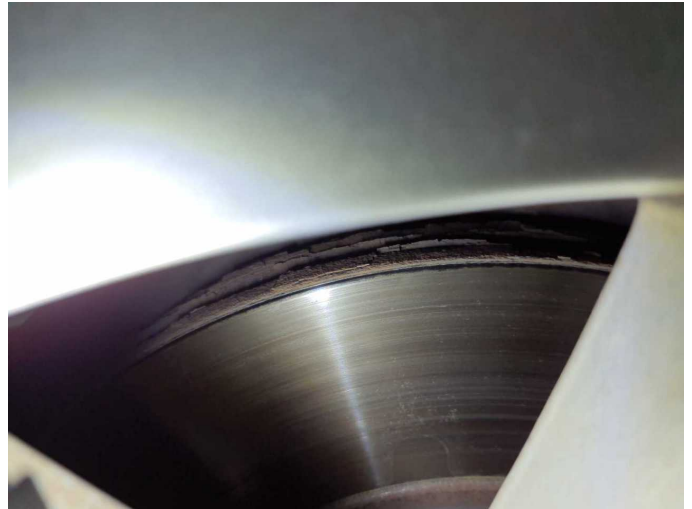
Damage 13: Rear bumper: Rear bumper - Scratched - Paint



Damage 13: Rear bumper: Rear bumper - Scratched - Paint



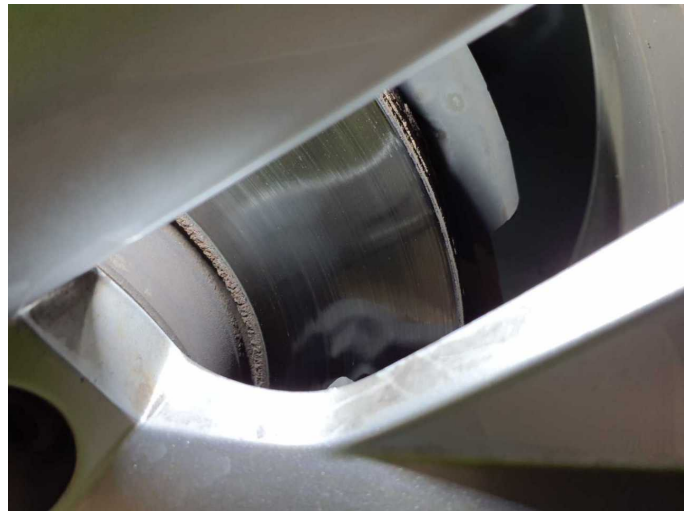
Damage 13: Rear bumper: Rear bumper - Scratched - Paint



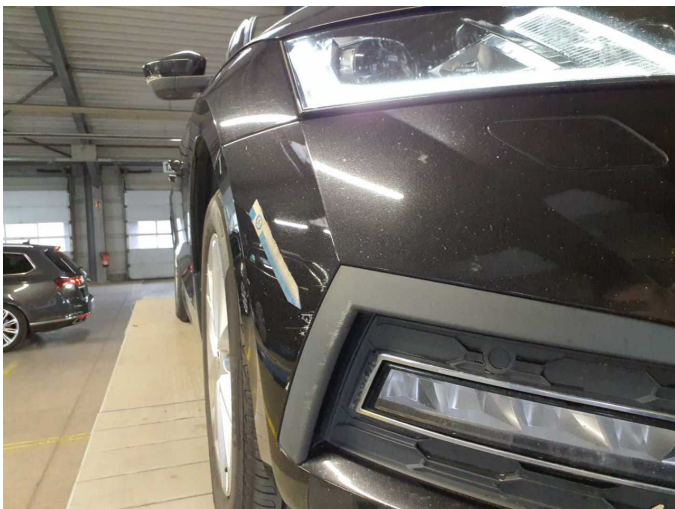
Damage 14: Braking system: Brake discs - front (Tragbild mangelhaft, Rostrand) - Corrosion - Replace



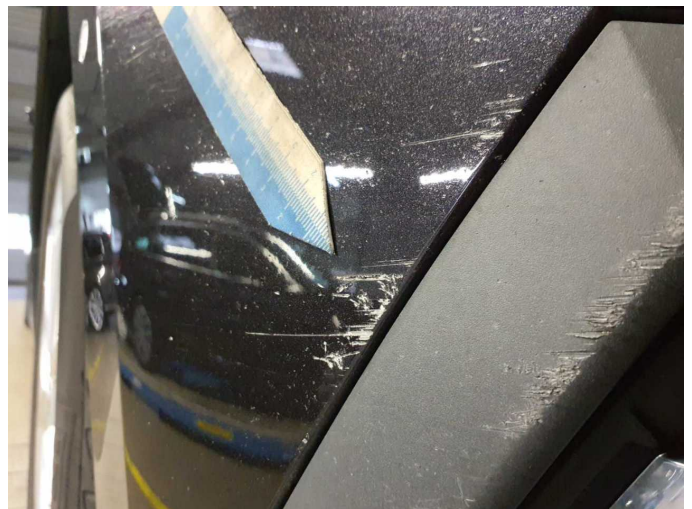
Damage 14: Braking system: Brake discs - front (Tragbild mangelhaft, Rostrand) - Corrosion - Replace



Damage 14: Braking system: Brake discs - front (Tragbild mangelhaft, Rostrand) - Corrosion - Replace



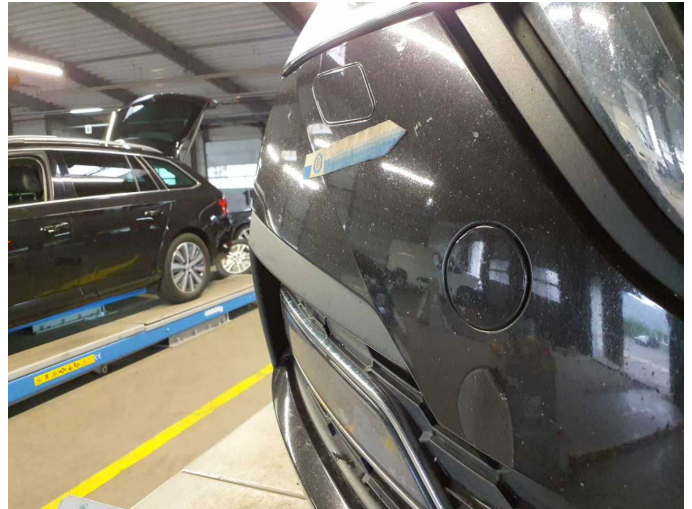
Damage 15: Front bumper: Front bumper (Steinschlag, und Blende) - Scratched - Repair and paint



Damage 15: Front bumper: Front bumper (Steinschlag, und Blende) - Scratched - Repair and paint



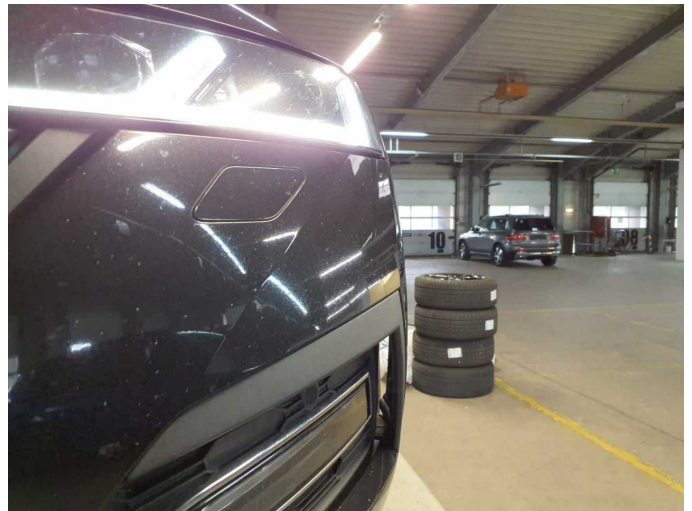
Damage 15: Front bumper: Front bumper (Steinschlag, und Blende) - Scratched - Repair and paint



Damage 15: Front bumper: Front bumper (Steinschlag, und Blende) - Scratched - Repair and paint



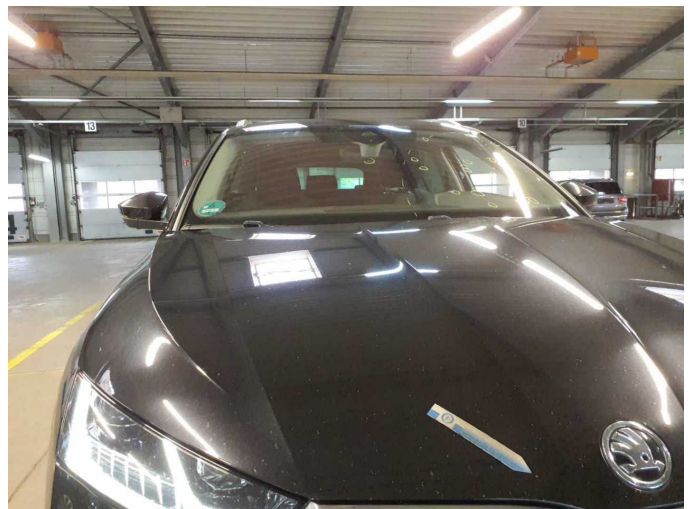
Damage 15: Front bumper: Front bumper (Steinschlag, und Blende) - Scratched - Repair and paint



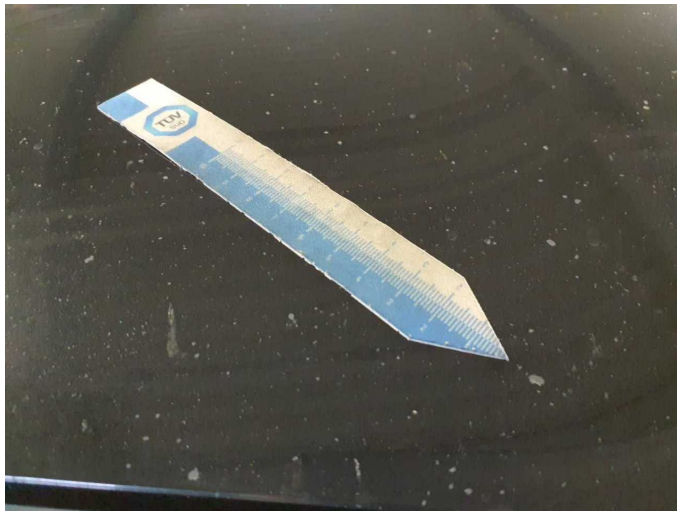
Damage 15: Front bumper: Front bumper (Steinschlag, und Blende) - Scratched - Repair and paint



Damage 15: Front bumper: Front bumper (Steinschlag, und Blende) - Scratched - Repair and paint



Damage 16: Bonnet: Bonnet (Korrosion) - Stone chips - Repair and paint



Damage 16: Bonnet: Bonnet (Korrosion) - Stone chips - Repair and paint



Damage 16: Bonnet: Bonnet (Korrosion) - Stone chips - Repair and paint



Damage 16: Bonnet: Bonnet (Korrosion) - Stone chips - Repair and paint



Damage 16: Bonnet: Bonnet (Korrosion) - Stone chips - Repair and paint



Damage 17: Vehicle glazing: Windscreen (Sandstrahleffekt, Blendwirkung) - Stone chips - repair according to calculation



Damage 17: Vehicle glazing: Windscreen (Sandstrahleffekt, Blendwirkung) - Stone chips - repair according to calculation



Damage 17: Vehicle glazing: Windscreen (Sandstrahleffekt, Blendwirkung) - Stone chips - repair according to calculation



Damage 17: Vehicle glazing: Windscreen (Sandstrahleffekt, Blendwirkung) - Stone chips - repair according to calculation



Wartungshistorie

(gemäß Auftraggeber Informationen)

Fahrgestellnummer: TMBJJ7NXXLY035957

Hersteller / Modell: SKODA SKODA Octavia Combi 2.0 TDI DSG First Edition

Datum	KM-Stand	Beschreibung
15.03.2024	122.536	Getriebeöl ern/prüfen; Motoröl b. Wartung; Ölfilter ern; Regelwartungsdienst; Wartung Sonstiges
09.10.2023	116.266	AU
04.08.2022	92.272	Bremsflüssigkeit ern; Bremsklötze hinten; Bremsklötze vorne; Kraftstofffilter ern; Luftfiltereinsatz ern; Motoröl b. Wartung; Regelwartungsdienst
14.01.2022	66.011	Kleine Inspektion; Motoröl b. Wartung
24.06.2021	31.592	Motoröl b. Wartung; Ölfilter ern; Regelwartungsdienst; Wartung Sonstiges