



Expertise

Protocol number: 41556538  
Order No. / Reference: 25213914  
Inspection date: 16 Sept 2025

Manufacturer: Skoda	Model: Octavia Combi 2.0 TDI Style
VIN: TMBJJ7NX8MY169769	



Vehicle details	
Manufacturer / Type / Model / Equipment	
Skoda Octavia Combi 2.0 TDI Style	
Vehicle Identification number	TMBJJ7NX8MY169769
Mileage (Read)	193,759 km
First registration	9 Sept 2021
Number of holders	1
Next periodical technical inspection	09/2026
(Report not on hand)	
Power / Engine displacement	110 kw / 1,968 ccm
Fuel type / Cylinder	Diesel / 4
Gearbox / Number of gears	Manual / 6
Type of drive	Front drive
Type of vehicle	Station wagon
Colour / colour code	moonweiss-metallic (S9R)
Doors / Seats	5 / 5
Upholstery type	Cloth
Colour of upholstery	Black-Grey
Re/Import	no
Vehicle with smoke odor	no
Driving readiness	Roadworthy



## Vehicle details

<b>Maintenance booklet / proof</b>	digital proof / complete	<b>Next maintenance in</b>	28,900 km
<b>Key is / should be</b>	2 / 2	<b>FZG documents</b>	ZB#2 (B) was available (copy), ZB#1 (S) was not available
		<b>Letter No.</b>	GD066150
<b>Previous damage / Accident</b>	Detectable	<b>Repainting</b>	Detectable
<b>Inspection conditions</b>	sufficient	<b>Lifting equipment / pit</b>	yes
<b>Test drive</b>	Not performed	<b>Engine function test</b>	Performed
<b>Driving readiness</b>	Roadworthy		
<b>Manufacturer key number/ type code number</b>	8004 / AWL 00068		
<b>Emission standard</b>	EURO6;WLTP;AP;PI/CI; M, N1 I	<b>Fine dust sticker</b>	
<b>Permitted total weight</b>	1,960 kg	<b>Empty weight</b>	

## Tyres

### Mounted tyres

#	Tyre size	Type of tyre	Manufacturer	Tread depth
1)	205/55 R17 91V	Summer tyres on Light alloy	Michelin	2mm / 2mm
2)	205/55 R17 91V	Summer tyres on Light alloy	Michelin	6mm / 6mm

### Additional tyres

#	Tyre size	Type of tyre	Manufacturer	Tread depth
1)	205/55 R17 97H	Winter tyres on Light alloy	Continental	2mm / 2mm
2)	205/55 R17 97H	Winter tyres on Light alloy	Continental	5mm / 5mm

### Replacement

Typ	Tyre size	Type of tyre	Manufacturer	Tread depth
	Tirefit	Expiration date 03/2025		

**Legend:** Tread depth information for tires on the left is in the first place, for tires on the right is in the second place on the axle in the direction of travel



## Equipment

### Standard equipment

- Storage compartment in the luggage compartment with cargo element
- Airbag, driver's knee airbag
- Airbag, front side airbags
- Anti-lock braking system (ABS)
- Dashboard center section with fabric cover
- Exterior mirrors electrically adjustable and heated
- Exterior mirrors, electrically folding
- Hill start assist including auto-hold function
- Hydraulic brake assist (HBA)
- Grey headliner
- Decorative strip in silver feel with ambient lighting
- Digital instrument cluster (Virtual Cockpit) 10.2"
- Third brake light
- Electronic transverse differential lock (XDS+)
- Driving light assistant
- Electric windows front and rear, including anti-pinch protection and child safety lock
- Cruise control system
- Tinted windows
- Heated rear window
- Rear window wiper including windscreen washer system
- ISOFIX preparations on the front passenger seat and the outer rear seats including top tether anchorage
- Climatronic air conditioning (2 zones)
- Headrests (5) front and rear height adjustable
- LED fog lights
- LED license plate lighting
- Remote release of the rear seat backrests in the trunk
- Steering wheel: Leather steering wheel with multifunction buttons
- Front center armrest, including storage compartment
- Parking sensors front and rear
- Radio: Bolero music system with capacitive 10" color display
- Radio accessories: Bluetooth hands-free system
- Radio accessories: SmartLink
- Rain sensor
- Tire mobility set
- Power steering, electromechanical
- Safety lights in the front side doors
- Seats: Electrically adjustable front seats with memory function
- SKODA Care Connect
- Lane keeping assistant (Lane Assist)
- 12-V socket in the trunk
- Telephone: Phonebox with inductive charging function (connection via the external antenna)
- Immobiliser
- Shelves
- Airbag, driver and passenger
- Airbag, head airbags
- Ambient lighting
- Traction control (ASR)
- Automatically dimming exterior mirror (driver's side)
- Exterior mirrors with memory function
- Heated windscreen washer nozzles including 5l washer fluid reservoir
- Glasses compartment on the roof lining
- Roof rails, anodized
- diesel particulate filter
- tachometer
- Electronic parking brake
- Electronic Stabilization Control (ESC)
- Driving profile selection
- Front radar assistant including city emergency braking function and person and cyclist detection
- Transmission: 6-speed manual transmission
- Green tec: Automatic start/stop system including brake energy recovery
- Interior mirror automatically dimming
- Kessy, keyless entry and start-stop system
- Electronic child lock
- Removable trunk cover
- Paint finish: Uni
- LED taillights in crystal glass look and animated indicators
- LED headlights with LED daytime running lights
- Steering wheel: height and length adjustable
- Manual headlight range adjustment
- Rear center armrest with through-loading option
- Engine drag torque control (MSR)
- Upholstery: Cloth
- Radio accessories: 2 USB-C ports at the front
- Radio accessories: 8 speakers
- Radio accessories: Digital radio reception DAB+
- Radio accessories: voice control
- Tire pressure monitoring
- Wheels: 17" Rotare AERO alloy wheels
- Seat belts
- Seats: Heated front seats
- Seats: Height-adjustable driver and passenger seats
- Seats: Rear seat backrest 60:40 split folding
- Speed limiter
- Lane change and rear traffic assistant as well as exit warning
- Phone: Wireless SmartLink for Apple CarPlay
- Lashing eyes in the trunk



- Central locking including remote control integrated in the key and EASY Start

### Extra equipment

- Luggage net partition
- Package: Infotainment Columbus Plus (Columbus navigation system - Infotainment Online (3-year subscription) - Head-Up Display)
- Auxiliary heater with radio remote control
- Variable loading floor in the trunk including organizer and aluminum crossbars
- Finish: pearl effect
- Package: Parking & Light (for Sportline, Style) (cornering light in the fog lights - headlight cleaning system - matrix headlights - rear view camera - park assist)
- Sunset (rear window and rear side windows dark tinted)

### Brief expert findings

Documents submitted	At the time of the inspection, the registration certificate Part 2 (letter) was available, but the registration certificate Part 1 (certificate) was not. (Copy)
VIN comparison	The vehicle identification number (VIN) was read from the vehicle and its conformity with the submitted documents was verified during the inspection by the undersigned.
Inspection	The inspection conditions were sufficient for the assessment of the vehicle. Lifting equipment and a pit were available for examining the vehicle.
Test drive	No test drive/maneuvering was carried out during the inspection of the vehicle.
Engine function test	An engine test run was performed.
Driving readiness	The vehicle was drivable at the time of inspection.

### Value reducing factors

No.	Component group	Description
1	2nd wheel set	2 tyres (Zubehör) - Does not meet the leasing specifications - No deduction
2	Equipment	Tirefit filler - Expired - Replace
3	Side panel - rear right side	Sill - Scratch(es) - Cover / polish
4	Side panel - rear left side	Sill - dent(s) - Smooth repair work
5	Trim / covers	Floor mats - Broken / torn - Replace
6	Wheel / tyres	Alloy rim - front left side - Scratch(es) - Loss in value
7	Interior	Interior - Odour - Ozone treatment
8	Wheel / tyres	Tyre - front - Does not meet the leasing specifications - Replace
9	Rear bumper	Rear bumper - Scratch(es) - Paint
10	Bonnet	Bonnet - Unprofessionally repaired - Paint

### Wear and tear

No.	Component group	Description
1	Front bumper	Front bumper - Stone chips - No deduction
2	Interior	Interior - Soiled - No deduction
3	Vehicle glazing	Windscreen - Stone chips - No deduction

The vehicle shows signs of wear commensurate with its age and use.

### Previous damages

No.	Previous damage	Extent of damage (Net)
1	Front, Side - left, Provided by user / customer, from 10 Sept 2021	6.477,82 €
2	Front, Side right, Provided by user / customer, from 23 Feb 2025	7.526,89 €



## Repainting

### No. Repainting

- 1 Bonnet
- 2 Side panel - rear right side

## Paint coat thickness measurement

Bonnet	264 µm	Side panel - rear right side	239 µm
--------	--------	------------------------------	--------

## Order/Scope of order

The order was placed to prepare a sales report for the vehicle described. This includes the following:

- Description of core relevant information about the vehicle
- Documentation of equipment features  
(Delivery by third-party service providers)
- Documentation of damage, defects, missing parts
- Documentation of previous damage, unrepaired previous damage, repainting
- a brief visual or functional inspection of the equipment details if possible.  
(Functional tests of driver assistance systems are not included in the scope of services!)
- a photo documentation of the vehicle

## Basis for the order

This product is based on the Alphabet Fuhrpark GmbH guidelines for vehicle returns and valuations. The expert makes the explicit findings in each individual case objectively within the framework of the specified standards based on his or her own expertise.

The vehicle inspection takes place in a disassembled state.

Damage or defects that can only be detected during disassembly/diagnosis work or through advanced knowledge remain within the scope of the prognosis risk. An extended risk exists for concealed defects caused by fraudulent deception and not identifiable by the expert.

Damage or defects resulting from normal use or wear and tear of the vehicle will be accepted according to the applicable standard.

There was no explicit identification or monetary consideration of the expected features within the product.

Features which in their nature and severity slightly exceed normal use but do not constitute unacceptable damage will be documented and identified under signs of use if necessary.

Damage or defects which, according to the underlying standard, can no longer be attributed to normal use or wear and tear are listed in the product under "Depreciating Factors".

Depending on the product specification, a monetary ID can be provided. If this takes place, the costs can be 100% d or pro rata depending on the vehicle's age and mileage.

## Previous damages

According to available information previous damages were repaired at the vehicle. Traces of repairs, which allow conclusions about the area of repair, were not recognizable during the inspection.

## Comments

- Winterradsatz ist kein Bestandteil des Auslieferungsumfangs.





Figure 1: Diagonal front (left)



Figure 2: Diagonal front (right)



Figure 3: Diagonal rear (left)



Figure 4: Diagonal rear (right)



Figure 5: Interior - front



Figure 6: Interior - rear





Figure 7: Instrument cluster



Figure 8: Instrument panel



Figure 9: Interior 360° view



Figure 10: Cargo area



Figure 11: VIN



Figure 12: Mounted tyres





Figure 13: Documents

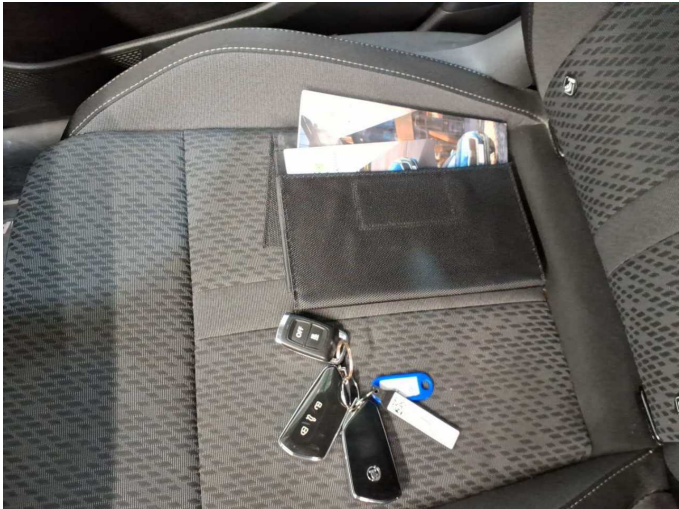


Figure 14: Documents



Figure 15: Additional tyres



Figure 16: Navigation



Figure 17: Misc.



Figure 18: Misc.





Figure 19: Misc.

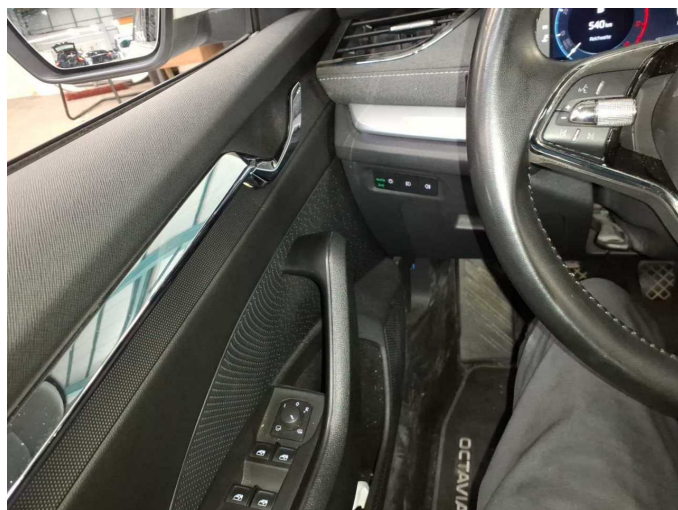


Figure 20: Misc.



Figure 21: Misc.

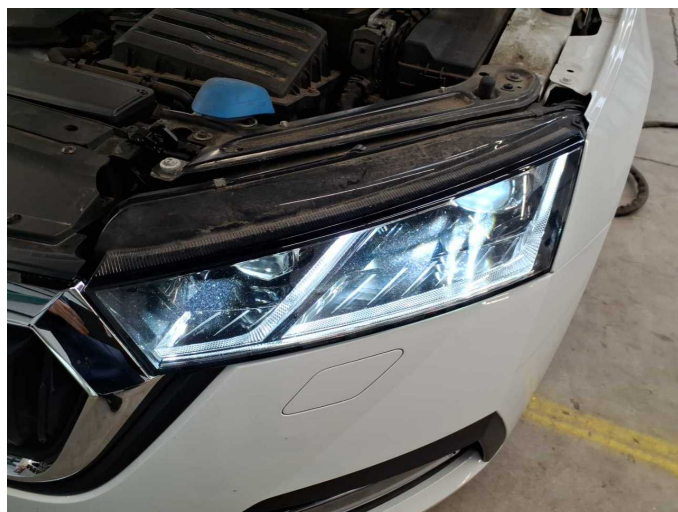


Figure 22: Misc.



Figure 23: Misc.



Figure 24: Misc.





Figure 25: Misc.



Figure 26: Misc.



Figure 27: Misc.



Figure 28: Misc.



**Damage 1:** 2nd wheel set: 2 tyres (Zubehör) - Does not meet the leasing specifications - No deduction



**Damage 1:** 2nd wheel set: 2 tyres (Zubehör) - Does not meet the leasing specifications - No deduction



**Damage 2:** Equipment: Tirefit filler - Expired - Replace



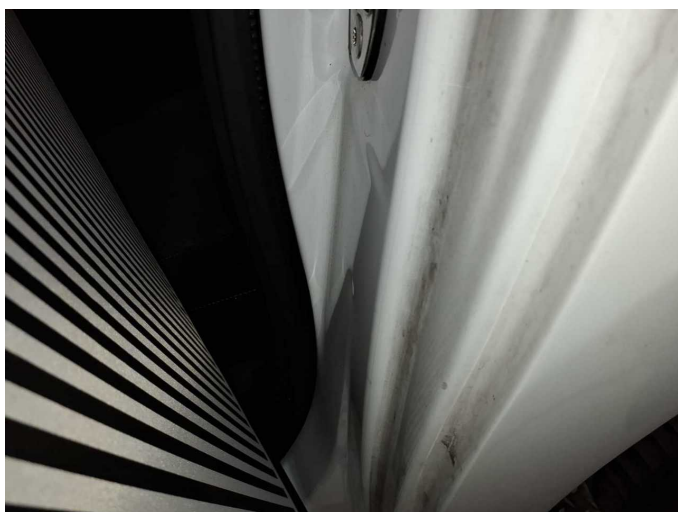
**Damage 3:** Side panel - rear right side: Sill - Scratch(es) - Cover / polish



**Damage 3:** Side panel - rear right side: Sill - Scratch(es) - Cover / polish



**Damage 4:** Side panel - rear left side: Sill - dent(s) - Smooth repair work



**Damage 4:** Side panel - rear left side: Sill - dent(s) - Smooth repair work



**Damage 5:** Trim / covers: Floor mats - Broken / torn - Replace





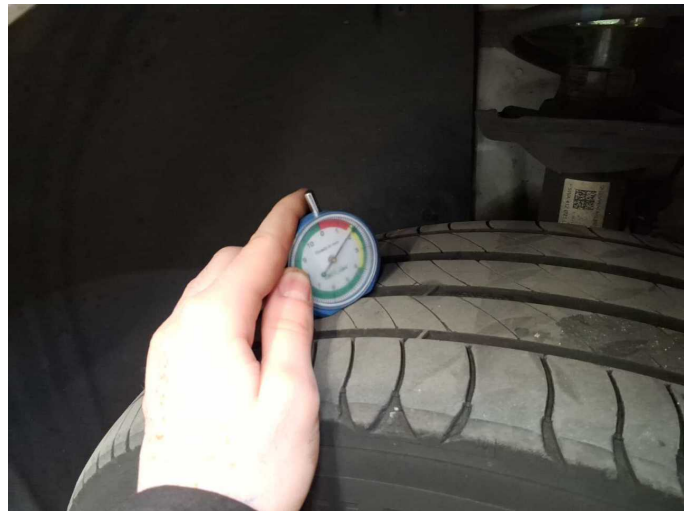
**Damage 6:** Wheel / tyres: Alloy rim - front left side - Scratch(es) - Loss in value



**Damage 6:** Wheel / tyres: Alloy rim - front left side - Scratch(es) - Loss in value



**Damage 8:** Wheel / tyres: Tyre - front - Does not meet the leasing specifications - Replace



**Damage 8:** Wheel / tyres: Tyre - front - Does not meet the leasing specifications - Replace



**Damage 8:** Wheel / tyres: Tyre - front - Does not meet the leasing specifications - Replace



**Damage 8:** Wheel / tyres: Tyre - front - Does not meet the leasing specifications - Replace



**Damage 9:** Rear bumper: Rear bumper - Scratch(es) - Paint



**Damage 9:** Rear bumper: Rear bumper - Scratch(es) - Paint



**Damage 10:** Bonnet: Bonnet - Unprofessionally repaired - Paint



**Damage 10:** Bonnet: Bonnet - Unprofessionally repaired - Paint



**Repainting 1:** Bonnet



**Repainting 1:** Bonnet





**Repainting 2:** Side panel - rear right side



**Repainting 2:** Side panel - rear right side