



Expertise

Protocol number: 41738445
Order number / reference: 24935039
Inspection date: 26 Sept 2025

Manufacturer: Skoda	Model: Octavia Combi 2.0 TDI Style
VIN: TMBJJ7NX6MY168474	



Vehicle details	
Manufacturer / Type / Model / Equipment	
Skoda Octavia Combi 2.0 TDI Style	
Vehicle Identification number	TMBJJ7NX6MY168474
Mileage (Read)	152,662 km
First registration	17 Jun 2021
Number of holders	1
Next periodical technical inspection	06/2026
(Report not on hand)	
Power / Engine displacement	110 kw / 1,968 ccm
Fuel type / Cylinder	Diesel / 4
Gearbox / Number of gears	Manual / 6
Type of drive	Front drive
Type of vehicle	Station wagon
Colour / colour code	Quarz Grau Metallic (F7Y)
Doors / Seats	5 / 5
Upholstery type	Cloth
Colour of upholstery	Grey-Beige



Vehicle details

Maintenance booklet / proof	digital proof / incomplete	Next maintenance in	25,400 km
Last maintenance on / at	07/2025 at 148,026 km		
Key is / should be	2 / 2	FZG documents	ZB#2 (B) was available (copy), ZB#1 (S) was not available
		Letter No.	GD054082
Previous damage / Accident	None detectable	Repainting	None detectable
Inspection conditions	sufficient	Lifting equipment / pit	yes
Test drive	Not performed	Engine function test	Performed
Manufacturer key number/ type code number	8004 / AWL 00066		
Emission standard	EURO6;WLTP;AP;PI/CI; M, N1 I	Fine dust sticker	
Permitted total weight	1,960 kg	Empty weight	

Tyres

Mounted tyres

#	Tyre size	Type of tyre	Manufacturer	Tread depth
1)	205/55 R17 91V	Summer tyres on Light alloy	Continental	5mm / 5mm
2)	205/55 R17 91V	Summer tyres on Light alloy	Continental	6mm / 6mm

Additional tyres

#	Tyre size	Type of tyre	Manufacturer	Tread depth
1)	205/60 R16 92H	Winter tyres on Light alloy	Bridgestone	6mm / 6mm
2)	205/60 R16 92H	Winter tyres on Light alloy	Continental	7mm / 6mm

Replacement

Typ	Tyre size	Type of tyre	Manufacturer	Tread depth
	Tirefit	Expiration date 08/2029		

Legend: Tread depth information for tires on the left is in the first place, for tires on the right is in the second place on the axle in the direction of travel



Equipment

Standard equipment

- Storage compartment in the luggage compartment with cargo element
- Airbag, driver's knee airbag
- Airbag, front side airbags
- Anti-lock braking system (ABS)
- Dashboard center section with fabric cover
- Exterior mirrors electrically adjustable and heated
- Exterior mirrors, electrically folding
- Hill start assist including auto-hold function
- Hydraulic brake assist (HBA)
- Grey headliner
- diesel particulate filter
- tachometer
- Electronic parking brake
- Electronic Stabilization Control (ESC)
- Driving profile selection
- Front radar assistant including city emergency braking function and person and cyclist detection
- Transmission: 6-speed manual transmission
- Green tec: Automatic start/stop system including brake energy recovery
- Rear window wiper including windscreen washer system
- ISOFIX preparations on the front passenger seat and the outer rear seats including top tether anchorage
- Climatronic air conditioning (2 zones)
- Headrests (5) front and rear height adjustable
- LED rear lights
- LED headlights with LED daytime running lights
- Steering wheel: height and length adjustable
- Rear center armrest with through-loading option
- Engine drag torque control (MSR)
- Radio: Bolero music system with capacitive 10" color display
- Radio accessories: Digital radio reception DAB+
- Rain sensor
- Tire mobility set
- Power steering, electromechanical
- Safety lights in the front side doors
- Seats: Electrically adjustable front seats with memory function
- SKODA Care Connect
- Lane keeping assistant (Lane Assist)
- 12-V socket in the trunk
- Phone: SmartLink (MirrorLink, Apple CarPlay, Android Auto)
- Phone: Wireless SmartLink for Apple CarPlay
- Lashing eyes in the trunk
- Central locking including remote control integrated in the key and EASY Start
- Shelves
- Airbag, driver and passenger
- Airbag, head airbags
- Ambient lighting
- Traction control (ASR)
- Automatically dimming exterior mirror (driver's side)
- Exterior mirrors with memory function
- Heated windscreen washer nozzles including 5l washer fluid reservoir
- Glasses compartment on the roof lining
- Roof rails, anodized
- Digital instrument cluster (Virtual Cockpit) 10.2"
- Third brake light
- Electronic transverse differential lock (XDS+)
- Driving light assistant
- Electric windows front and rear, including anti-pinch protection and child safety lock
- Cruise control system
- Tinted windows
- Taillights in crystal glass look and animated indicators
- Heated rear window
- Interior mirror automatically dimming
- Kessy, keyless entry and start-stop system
- Electronic child lock
- Removable trunk cover
- LED fog lights
- LED license plate lighting
- Remote release of the rear seat backrests in the trunk
- Manual headlight range adjustment
- Front center armrest, including storage compartment
- Parking sensors front and rear
- Radio accessories: 2 USB-C ports at the front
- Radio accessories: 8 speakers
- Radio accessories: voice control
- Tire pressure monitoring
- Wheels: 17" Rotare AERO alloy wheels
- Seat belts
- Seats: Heated front seats
- Seats: Height-adjustable driver and passenger seats
- Seats: Rear seat backrest 60:40 split folding
- Speed limiter
- Lane change and rear parking assistant
- Telephone: Phonebox with inductive charging function (connection via the external antenna)
- Bluetooth hands-free phone system
- Immobiliser



Extra equipment

- Trailer coupling, pivoting including trailer stabilization and adapter
- Steering wheel: Heated steering wheel in sports design
- Electric panoramic sunroof (no glasses compartment on the roof lining)
- Upholstery: Style fabric (with dashboard covered in anthracite fabric and decorative strip in piano black)
- Decorative strips in piano black
- Paint finish: metallic
- Package: Infotainment Columbus Plus (Combi) (Columbus navigation system - Infotainment Online (3-year term) - Head-Up Display - Luggage net partition)
- Rear view camera

Brief expert findings

Documents submitted	At the time of the inspection, the registration certificate Part 2 (letter) was available, but the registration certificate Part 1 (certificate) was not. (Copy)
VIN comparison	The vehicle identification number (VIN) was read from the vehicle and its conformity with the submitted documents was verified during the inspection by the undersigned.
Inspection	The inspection conditions were sufficient for the assessment of the vehicle. Lifting equipment and a pit were available for examining the vehicle.
Test drive	No test drive/maneuvering was carried out during the inspection of the vehicle.
Engine function test	An engine test run was performed.

Value reducing factors

No.	Component group	Description
1	Side panel - rear left side	Side panel - dent(s) - Smart repair
2	Interior	Interior - Soiled - Clean
3	Rear bumper	Rear bumper - Scratch(es) - Smart repair
4	Side panel - rear right side	Side panel - Corrosion - Smart repair
5	Door - rear left side	Door - Deformed - Repair and paint
6	Vehicle glazing	Windscreen - Damaged - Replace

Wear and tear

No.	Component group	Description
1	Trim / covers	Boot lid - interior trim - Scratch(es) - No deduction
2	Bonnet	Bonnet - Stone chips - No deduction
3	Front bumper	Front bumper - Stone chips - No deduction
4	Front bumper	Spoiler - Scratch(es) - No deduction
5	Body	Underbody panelling - Scratch(es) - No deduction
6	Door - front left side	Door edge - Scratch(es) - No deduction

The vehicle shows signs of wear commensurate with its age and use.



Order/Scope of order

The order was placed to prepare a sales report for the vehicle described. This includes the following:

- Description of core relevant information about the vehicle
- Documentation of equipment features
(*Delivery by third-party service providers*)
- Documentation of damage, defects, missing parts
- Documentation of previous damage, unrepaired previous damage, repainting
- a brief visual or functional inspection of the equipment details if possible.
(*Functional tests of driver assistance systems are not included in the scope of services!*)
- a photo documentation of the vehicle

Basis for the order

This product is based on the Alphabet Fuhrpark GmbH guidelines for vehicle returns and valuations. The expert makes the explicit findings in each individual case objectively within the framework of the specified standards based on his or her own expertise.

The vehicle inspection takes place in a disassembled state.

Damage or defects that can only be detected during disassembly/diagnosis work or through advanced knowledge remain within the scope of the prognosis risk. An extended risk exists for concealed defects caused by fraudulent deception and not identifiable by the expert.

Damage or defects resulting from normal use or wear and tear of the vehicle will be accepted according to the applicable standard.

There was no explicit identification or monetary consideration of the expected features within the product.

Features which in their nature and severity slightly exceed normal use but do not constitute unacceptable damage will be documented and identified under signs of use if necessary.

Damage or defects which, according to the underlying standard, can no longer be attributed to normal use or wear and tear are listed in the product under "Depreciating Factors".

Depending on the product specification, a monetary ID can be provided. If this takes place, the costs can be 100% d or pro rata depending on the vehicle's age and mileage.

Previous damages

Apparently, no repaired previous damage could be found on the vehicle.

Comments

- Winterradsatz ist kein Bestandteil des Auslieferungsumfangs.



Figure 1: Diagonal front (left)



Figure 2: Diagonal front (right)



Figure 3: Diagonal rear (left)



Figure 4: Diagonal rear (right)



Figure 5: Interior - front



Figure 6: Interior - rear



Figure 7: Instrument cluster



Figure 8: Instrument panel



Figure 9: Interior 360° view



Figure 10: Cargo area

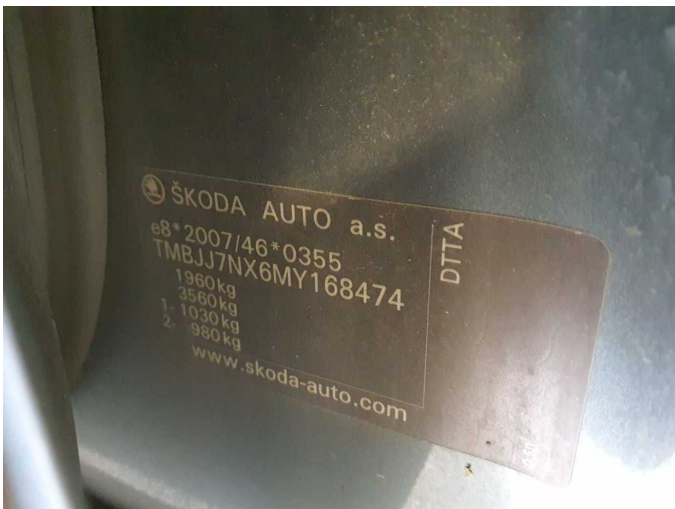


Figure 11: VIN



Figure 12: Mounted tyres



Figure 13: Documents

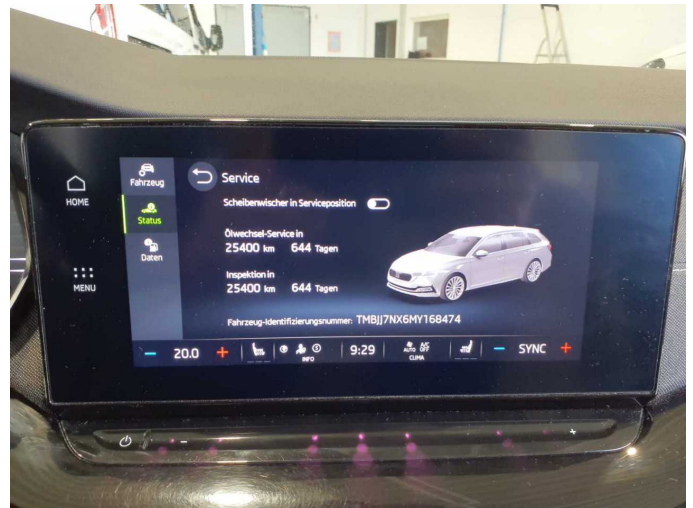


Figure 14: Documents



Figure 15: Documents



Figure 16: Additional tyres



Figure 17: Additional tyres

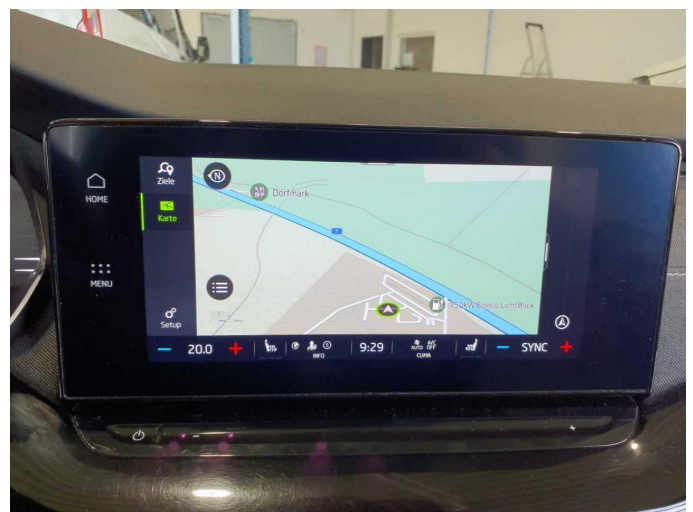


Figure 18: Navigation



Figure 19: Misc.



Figure 20: Misc.



Figure 21: Misc.



Figure 22: Misc.



Figure 23: Misc.

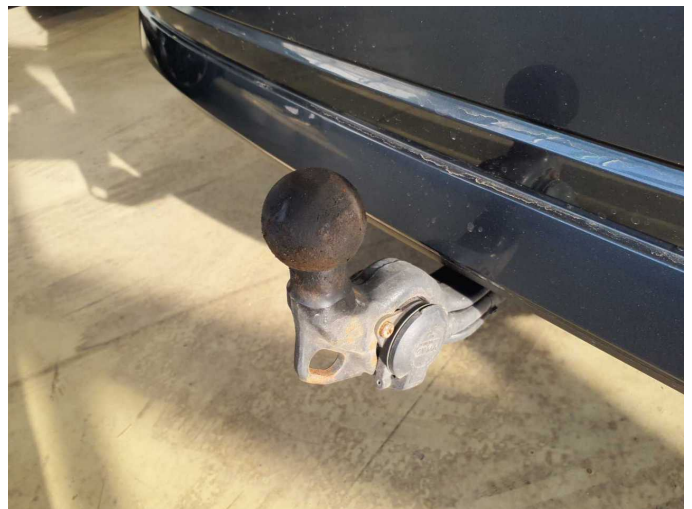


Figure 24: Misc.



Figure 25: Misc.



Damage 1: Side panel - rear left side: Side panel - dent(s) - Smart repair



Damage 1: Side panel - rear left side: Side panel - dent(s) - Smart repair



Damage 1: Side panel - rear left side: Side panel - dent(s) - Smart repair



Damage 2: Interior: Interior - Soiled - Clean



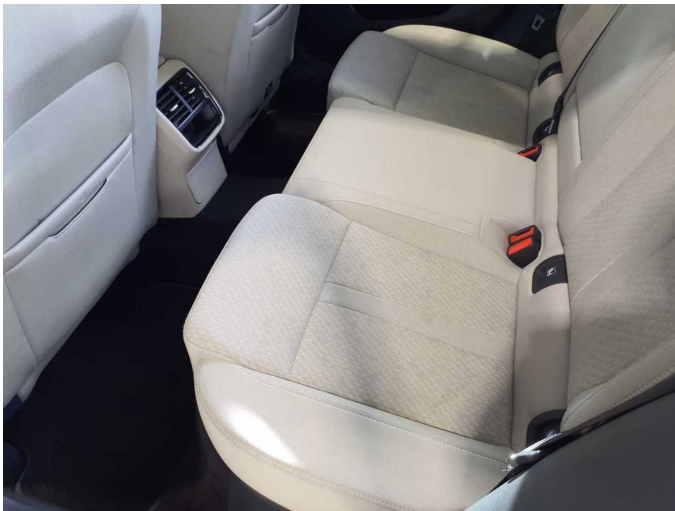
Damage 2: Interior: Interior - Soiled - Clean



Damage 2: Interior: Interior - Soiled - Clean



Damage 2: Interior: Interior - Soiled - Clean



Damage 2: Interior: Interior - Soiled - Clean



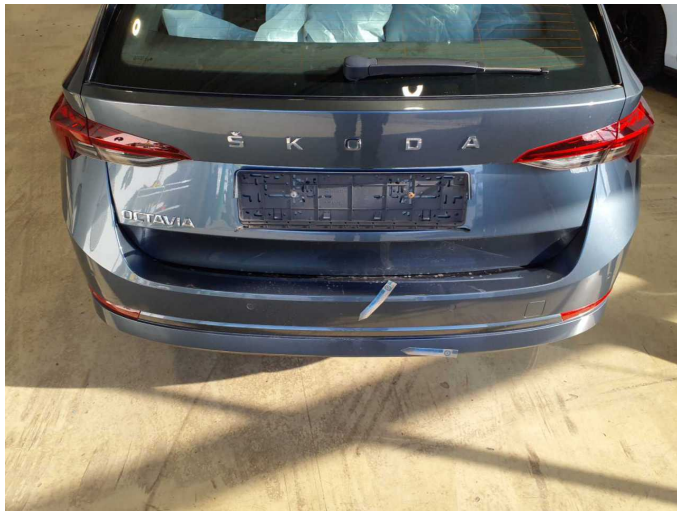
Damage 2: Interior: Interior - Soiled - Clean



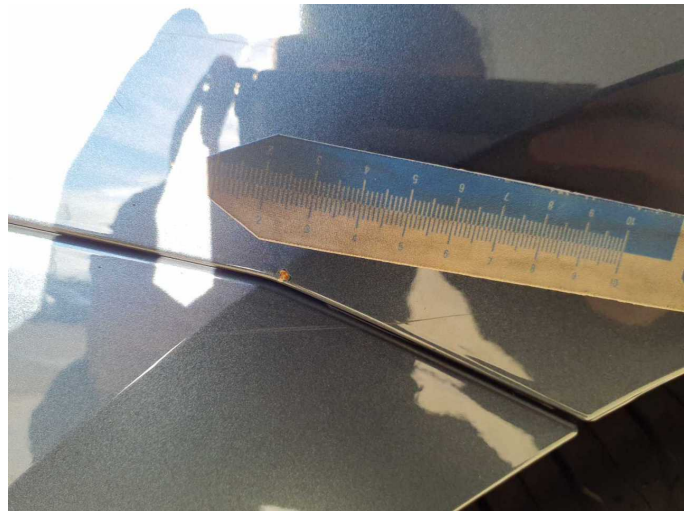
Damage 3: Rear bumper: Rear bumper - Scratch(es) - Smart repair



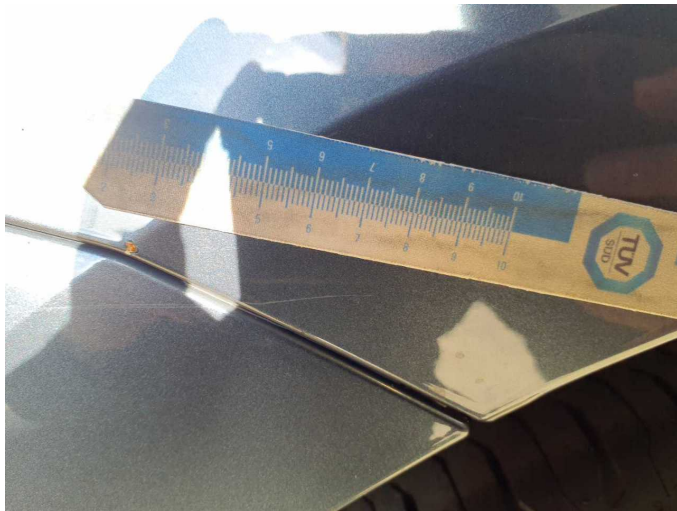
Damage 3: Rear bumper: Rear bumper - Scratch(es) - Smart repair



Damage 3: Rear bumper: Rear bumper - Scratch(es) - Smart repair



Damage 4: Side panel - rear right side: Side panel - Corrosion - Smart repair



Damage 4: Side panel - rear right side: Side panel - Corrosion - Smart repair



Damage 4: Side panel - rear right side: Side panel - Corrosion - Smart repair



Damage 5: Door - rear left side: Door - Deformed - Repair and paint



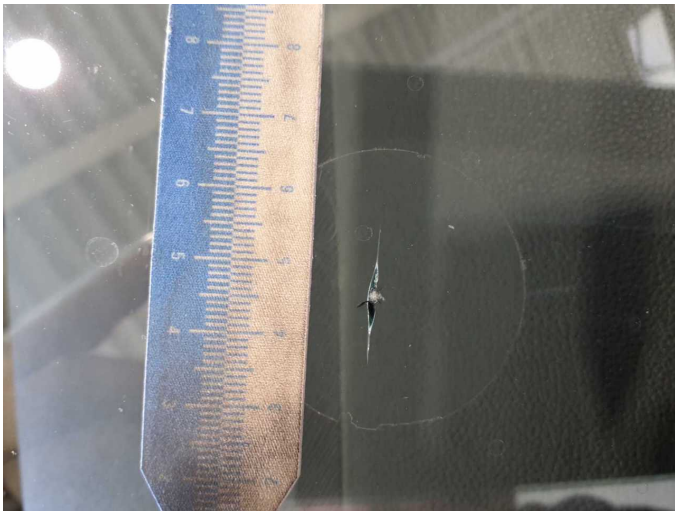
Damage 5: Door - rear left side: Door - Deformed - Repair and paint



Damage 5: Door - rear left side: Door - Deformed - Repair and paint



Damage 6: Vehicle glazing: Windscreen - Damaged - Replace



Damage 6: Vehicle glazing: Windscreen - Damaged - Replace



Damage 6: Vehicle glazing: Windscreen - Damaged - Replace



Wartungshistorie

(gemäß Auftraggeber Informationen)

Fahrgestellnummer: TMBJJ7NX6MY168474
Hersteller / Modell: SKODA SKODA Octavia Combi 2.0 TDI Style

Datum	KM-Stand	Beschreibung
03.07.2025	148.026	Bremse Sonstiges; Bremsklötze hinten; Bremsscheiben hinten; Motoröl b. Wartung; Ölfilter ern; Regelwartungsdienst; Wartung Sonstiges
09.10.2024	121.491	Luftfiltereinsatz ern; Motoröl b. Wartung; Ölfilter ern; Regelwartungsdienst; Wartung Sonstiges
28.06.2024	109.964	AU; Systemtest/Eigendiagnose; Wartung Sonstiges
25.01.2024	89.987	Bremsflüssigkeit; Bremsflüssigkeit ern; Kraftstofffilter ern; Luftfiltereinsatz ern; Motoröl b. Wartung; Ölfilter ern; Regelwartungsdienst; Wartung Sonstiges
13.04.2023	62.516	Motoröl b. Wartung; Ölfilter ern; Regelwartungsdienst; Wartung Sonstiges
20.06.2022	28.974	Motoröl b. Wartung; Ölfilter ern; Regelwartungsdienst; Wartung Sonstiges