



Expertise

Protocol number: 41478468
Order No. / Reference: 25199754
Inspection date: 10 Sept 2025

Manufacturer: Skoda
VIN: TMBJJ7NX4NY065460

Model: Octavia Combi 2.0 TDI DSG Style



Vehicle details	
Manufacturer / Type / Model / Equipment	
Skoda Octavia Combi 2.0 TDI DSG Style	
Vehicle Identification number	TMBJJ7NX4NY065460
Mileage (Read)	178,716 km
First registration	16 Feb 2022
Number of holders	1
Next periodical technical inspection	03/2027
(Report not on hand)	
Power / Engine displacement	110 kw / 1,968 ccm
Fuel type / Cylinder	Diesel / 4
Gearbox / Number of gears	Automatic / 7
Type of drive	Front drive
Type of vehicle	Station wagon
Colour / colour code	Black-Magic Perleffekt
Doors / Seats	5 / 5
Upholstery type	Cloth
Colour of upholstery	Black-Anthracite
Re/Import	no
Driving readiness	Roadworthy



Vehicle details

Maintenance booklet / proof	digital proof / complete	Next maintenance in	10,600 km
Last maintenance on / at	03/2025 at 161,522 km		
Key is / should be	2 / 2	FZG documents	ZB#2 (B) was available (copy), ZB#1 (S) was not available
		Letter No.	GG223166
Previous damage / Accident	None detectable	Repainting	Detectable
Inspection conditions	sufficient	Lifting equipment / pit	yes
Test drive	Not performed	Engine function test	Performed
Driving readiness	Roadworthy		
Manufacturer key number/ type code number	8004 / AWL 00146		
Emission standard	EURO6;WLTP;AP;PI/CI; M, N1 I	Fine dust sticker	
Permitted total weight	1,990 kg	Empty weight	

Tyres

Mounted tyres

#	Tyre size	Type of tyre	Manufacturer	Tread depth
1)	225/45 R18 91Y	Summer tyres on Light alloy	Goodyear	4mm / 4mm
2)	225/45 R18 95Y	Summer tyres on Light alloy	Fulda	5mm / 5mm

Additional tyres

#	Tyre size	Type of tyre	Manufacturer	Tread depth
1)	205/60 R16 96H	Winter tyres on Light alloy	Goodyear	3mm / 3mm
2)	205/60 R16 96H	Winter tyres on Light alloy	Goodyear	4mm / 4mm

Replacement

Typ	Tyre size	Type of tyre	Manufacturer	Tread depth
	Tirefit	Expiration date 11/2025		

Legend: Tread depth information for tires on the left is in the first place, for tires on the right is in the second place on the axle in the direction of travel



Equipment

Standard equipment

- Storage compartment in the luggage compartment with cargo element
- Airbag, driver's knee airbag
- Airbag, front side airbags
- Anti-lock braking system (ABS)
- Dashboard center section with fabric cover
- Exterior mirrors electrically adjustable and heated
- Exterior mirrors, electrically folding
- Hill start assist including auto-hold function
- Hydraulic brake assist (HBA)
- Grey headliner
- Decorative strip in silver feel with ambient lighting
- Digital instrument cluster (Virtual Cockpit) 10.2"
- Third brake light
- Electronic transverse differential lock (XDS+)
- Driving light assistant
- Electric windows front and rear, including anti-pinch protection and child safety lock
- Cruise control system
- Tinted windows
- Heated rear window
- Rear window wiper including windscreen washer system
- ISOFIX preparations on the front passenger seat and the outer rear seats including top tether anchorage
- Climatronic air conditioning (2 zones)
- Headrests (5) front and rear height adjustable
- LED taillights in crystal glass look and animated indicators
- LED headlights with LED daytime running lights
- Steering wheel: height and length adjustable
- Manual headlight range adjustment
- Rear center armrest with through-loading option
- Engine drag torque control (MSR)
- Upholstery: Cloth
- Radio accessories: 2 USB-C ports at the front
- Radio accessories: 8 speakers
- Radio accessories: Digital radio reception DAB+
- Radio accessories: voice control
- Tire pressure monitoring
- Wheels: 17" Rotare AERO alloy wheels
- Seat belts
- Seats: Heated front seats
- Seats: Height-adjustable driver and passenger seats
- Seats: Rear seat backrest 60:40 split folding
- Speed limiter
- 12-V socket in the trunk
- Phone: Wireless SmartLink for Apple CarPlay
- Lashing eyes in the trunk
- Shelves
- Airbag, driver and passenger
- Airbag, head airbags
- Ambient lighting
- Traction control (ASR)
- Automatically dimming exterior mirror (driver's side)
- Exterior mirrors with memory function
- Heated windscreen washer nozzles including 5l washer fluid reservoir
- Glasses compartment on the roof lining
- Roof rails, anodized
- diesel particulate filter
- tachometer
- Electronic parking brake
- Electronic Stabilization Control (ESC)
- Driving profile selection
- Front radar assistant including city emergency braking function and person and cyclist detection
- Transmission: 7-speed direct shift gearbox (DSG)
- Green tec: Automatic start/stop system including brake energy recovery
- Interior mirror automatically dimming
- Kessy, keyless entry and start-stop system
- Child safety locks for the rear doors and windows
- Removable trunk cover
- LED fog lights
- LED license plate lighting
- Remote release of the rear seat backrests in the trunk
- Steering wheel: Leather steering wheel with multifunction buttons with shift paddles
- Front center armrest, including storage compartment
- Parking sensors front and rear
- Radio: Bolero music system with capacitive 10" color display
- Radio accessories: Bluetooth hands-free system
- Radio accessories: SmartLink
- Rain sensor
- Tire mobility set
- Power steering, electromechanical
- Safety lights in the front side doors
- Seats: Electrically adjustable front seats with memory function
- SKODA Care Connect
- Lane keeping assistant (Lane Assist)
- Telephone: Phonebox with inductive charging function (connection via the external antenna)
- Immobiliser



- Central locking including remote control integrated in the key and EASY Start

Extra equipment

- Trailer coupling, pivoting including trailer stabilization and adapter
- Luggage net partition
- Finish: pearl effect
- Package: Columbus infotainment package (Style, RS, Scout)
(Columbus navigation system - Infotainment Online (3-year term) - 3 USB charging ports)
- Heated windshield
- Chassis: Sports suspension (15 mm reduced ground clearance - modified damper tuning)
- Comfort opening with electric tailgate operation (Combi)
- Steering wheel: Heated steering wheel in sports design with shift paddles
- Wheels: 18" Perseus alloy wheels, anthracite, high-sheen (7.5J x 18, ET 48 with 225/45 R18 tires)

Brief expert findings

Documents submitted	At the time of the inspection, the registration certificate Part 2 (letter) was available, but the registration certificate Part 1 (certificate) was not. (Copy)
VIN comparison	The vehicle identification number (VIN) was read from the vehicle and its conformity with the submitted documents was verified during the inspection by the undersigned.
Inspection	The inspection conditions were sufficient for the assessment of the vehicle. Lifting equipment and a pit were available for examining the vehicle.
Test drive	No test drive/maneuvering was carried out during the inspection of the vehicle.
Engine function test	An engine test run was performed.
Driving readiness	The vehicle was drivable at the time of inspection.

Value reducing factors

No.	Component group	Description
1	Interior	Cargo area floor - Soiled - Clean
2	Body	Underbody panelling - Scratched - Replace
3	Rear bumper	Rear bumper - Scratched - Smart repair

Wear and tear

No.	Component group	Description
1	Interior	Interior - Scratch(es) - No deduction
2	Front bumper	Front bumper (Kratzer) - Stone chips - No deduction
3	Headlight	Headlight - right side - Stone chips - No deduction
4	Headlight	Headlight - left side - Stone chips - No deduction
5	Bonnet	Bonnet (Kratzer) - Stone chips - No deduction
6	Roof	Roof - Scratch(es) - No deduction
7	Vehicle glazing	Windscreen - Stone chips - No deduction
8	Vehicle glazing	Rear window - Scratch(es) - No deduction
9	Body	Body (Kratzer) - Stone chips - No deduction
10	Mudguard - right side	Mudguard - right side - Stone chips - No deduction
11	Wheel / tyres	Alloy rim - rear right side - Scratched - No deduction

The vehicle shows signs of wear commensurate with its age and use.

Repainting

No.	Repainting
1	Mudguard - left side, Professionally carried out, Invoice of repair done Non-existent



No. Repainting

2 Bonnet, Professionally carried out, Invoice of repair done Non-existent

Paint coat thickness measurement

Mudguard - left side	175 µm	Bonnet	199 µm
----------------------	--------	--------	--------

Order/Scope of order

The order was placed to prepare a sales report for the vehicle described. This includes the following:

- Description of core relevant information about the vehicle
- Documentation of equipment features
(*Delivery by third-party service providers*)
- Documentation of damage, defects, missing parts
- Documentation of previous damage, unrepaired previous damage, repainting
- a brief visual or functional inspection of the equipment details if possible.
(*Functional tests of driver assistance systems are not included in the scope of services!*)
- a photo documentation of the vehicle

Basis for the order

This product is based on the Alphabet Fuhrpark GmbH guidelines for vehicle returns and valuations. The expert makes the explicit findings in each individual case objectively within the framework of the specified standards based on his or her own expertise.

The vehicle inspection takes place in a disassembled state.

Damage or defects that can only be detected during disassembly/diagnosis work or through advanced knowledge remain within the scope of the prognosis risk. An extended risk exists for concealed defects caused by fraudulent deception and not identifiable by the expert.

Damage or defects resulting from normal use or wear and tear of the vehicle will be accepted according to the applicable standard.

There was no explicit identification or monetary consideration of the expected features within the product.

Features which in their nature and severity slightly exceed normal use but do not constitute unacceptable damage will be documented and identified under signs of use if necessary.

Damage or defects which, according to the underlying standard, can no longer be attributed to normal use or wear and tear are listed in the product under "Depreciating Factors".

Depending on the product specification, a monetary ID can be provided. If this takes place, the costs can be 100% d or pro rata depending on the vehicle's age and mileage.

Previous damages

Apparently, no repaired previous damage could be found on the vehicle.

Comments

- Winterradsatz ist kein Bestandteil des Auslieferumfangs.



Figure 1: Diagonal front (left)



Figure 2: Diagonal front (right)



Figure 3: Diagonal rear (left)



Figure 4: Diagonal rear (right)



Figure 5: Interior - front



Figure 6: Interior - rear



Figure 7: Instrument cluster



Figure 8: Instrument panel



Figure 9: Interior 360° view ([Online link](#))



Figure 10: Cargo area

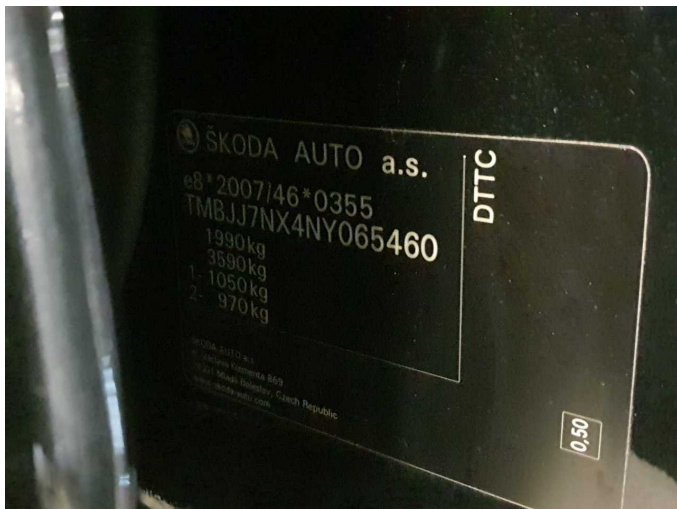


Figure 11: VIN



Figure 12: Mounted tyres

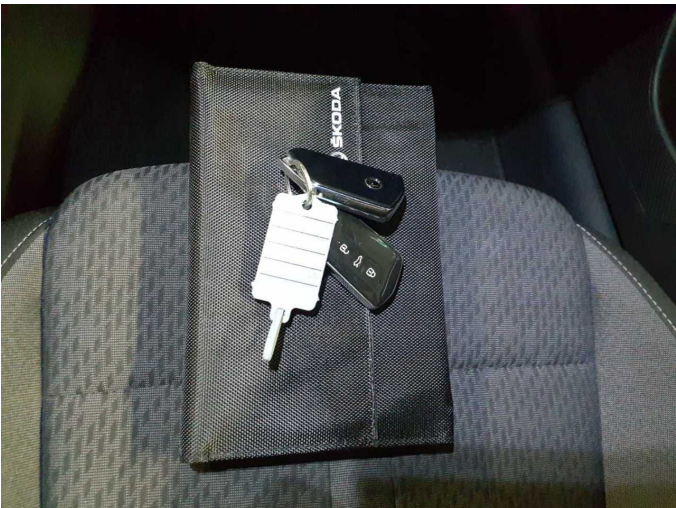


Figure 13: Documents



Figure 14: Additional tyres



Figure 15: Navigation



Figure 16: Misc.



Figure 17: Misc.



Figure 18: Misc.



Figure 19: Misc.



Figure 20: Misc.



Figure 21: Misc.



Figure 22: Misc.



Figure 23: Misc.



Figure 24: Misc.



Figure 25: Misc.



Figure 26: Misc.

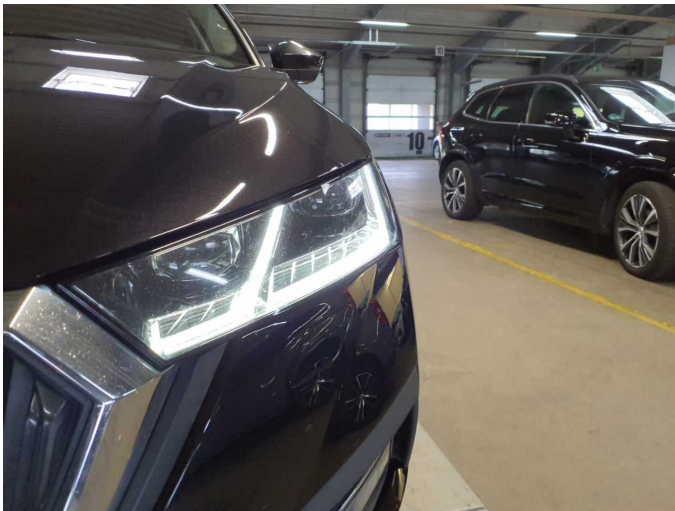


Figure 27: Misc.

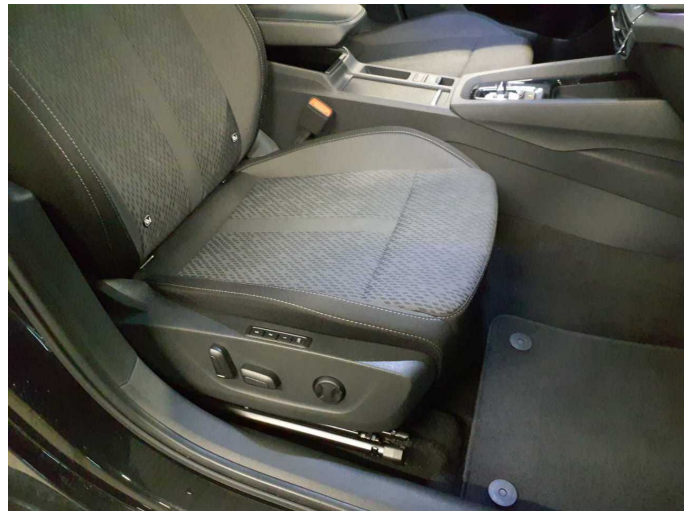


Figure 28: Misc.



Figure 29: Misc.

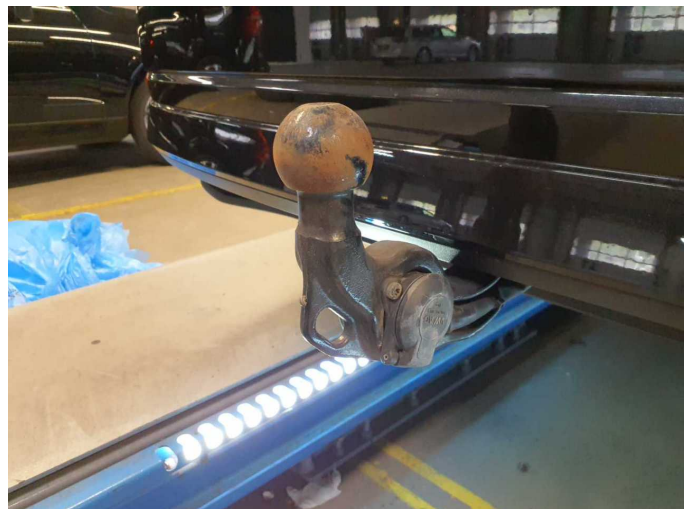


Figure 30: Misc.



Figure 31: Misc.

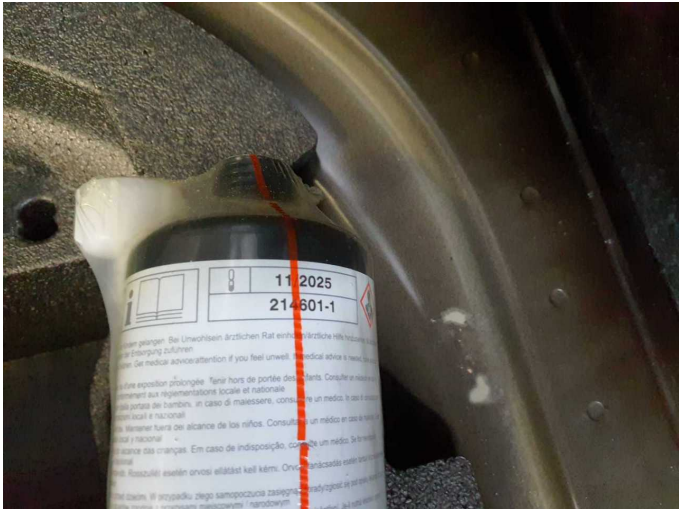


Figure 32: Misc.



Damage 1: Interior: Cargo area floor - Soiled - Clean



Damage 1: Interior: Cargo area floor - Soiled - Clean



Damage 2: Body: Underbody panelling - Scratched - Replace



Damage 2: Body: Underbody panelling - Scratched - Replace



Damage 2: Body: Underbody panelling - Scratched - Replace



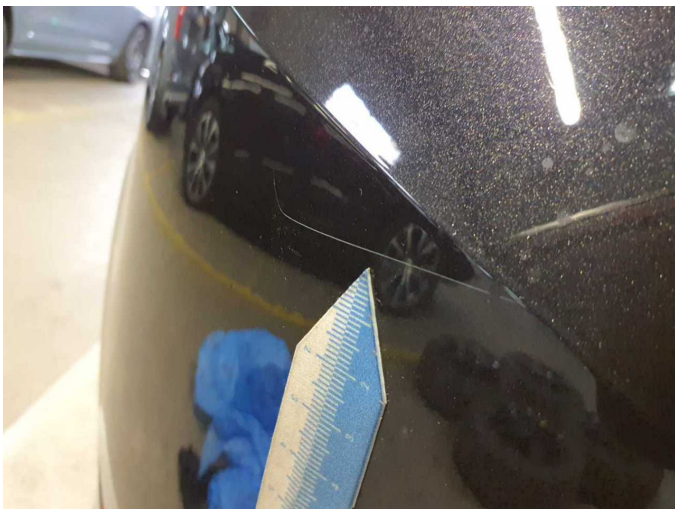
Damage 2: Body: Underbody panelling - Scratched - Replace



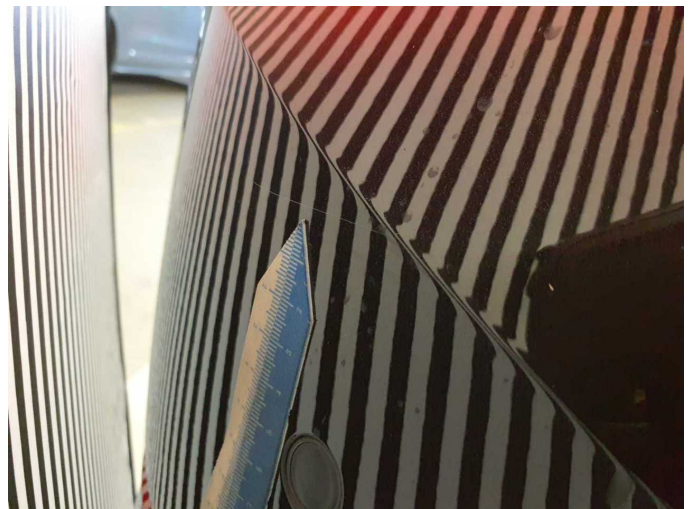
Damage 2: Body: Underbody panelling - Scratched - Replace



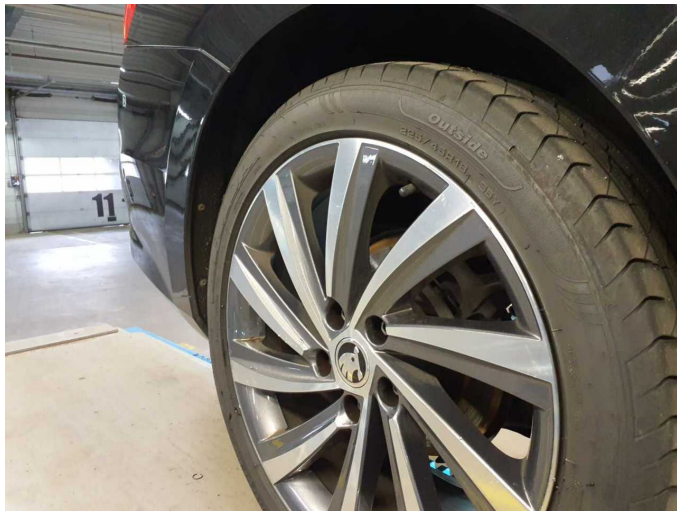
Damage 3: Rear bumper: Rear bumper - Scratched - Smart repair



Damage 3: Rear bumper: Rear bumper - Scratched - Smart repair



Damage 3: Rear bumper: Rear bumper - Scratched - Smart repair



Wear and tear 11: Wheel / tyres: Alloy rim - rear right side - Scratched - No deduction



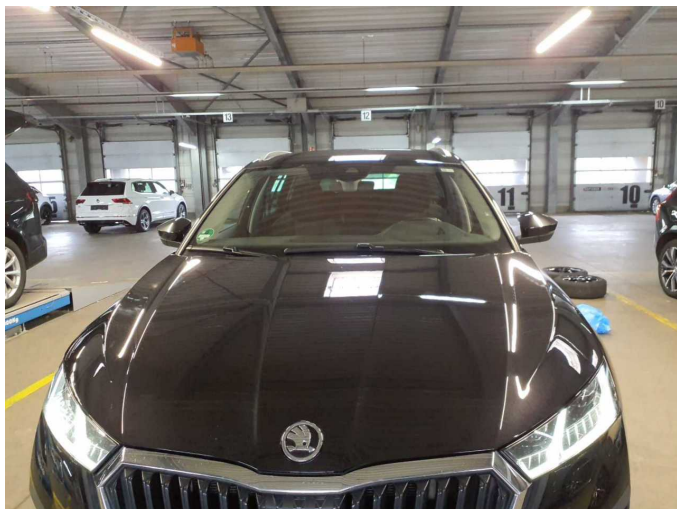
Wear and tear 11: Wheel / tyres: Alloy rim - rear right side - Scratched - No deduction



Repainting 1: Mudguard - left side



Repainting 1: Mudguard - left side



Repainting 2: Bonnet



Repainting 2: Bonnet



Wartungshistorie

(gemäß Auftraggeber Informationen)

Fahrgestellnummer: TMBJJ7NX4NY065460
Hersteller / Modell: SKODA SKODA Octavia Combi 2.0 TDI DSG Style

Datum	KM-Stand	Beschreibung
13.03.2025	161.522	AU; Motoröl b. Wartung; Ölfilter ern; Regelwartungsdienst; Wartung Sonstiges
13.08.2024	135.587	Bremse Sonstiges; Bremsklötze vorne; Bremsscheiben + Klötze v; Bremsscheiben vorne
15.07.2024	131.799	Bremsflüssigkeit; Bremsflüssigkeit ern; Getriebeöl ern/prüfen; Motoröl b. Wartung; Ölfilter ern; Regelwartungsdienst; Wartung Sonstiges
27.10.2023	101.656	Bremse Sonstiges; Bremsklötze hinten; Bremsscheiben + Klötze h; Bremsscheiben hinten
27.09.2023	96.935	Kraftstofffilter ern; Luftfiltereinsatz ern; Motoröl b. Wartung; Ölfilter ern; Regelwartungsdienst; Wartung Sonstiges
30.03.2023	74.772	Bremsscheiben + Klötze v
27.01.2023	63.677	Motoröl b. Wartung; Regelwartungsdienst
05.08.2022	33.002	Motoröl b. Wartung; Regelwartungsdienst