



Expertise

Protocol number: 41488919  
Order No. / Reference: 25172075-1  
Inspection date: 11 Sept 2025

Manufacturer: Skoda  
VIN: TMBJJ7NX4MY099056

Model: Octavia Combi 2.0 TDI DSG First Edition



Vehicle details	
Manufacturer / Type / Model / Equipment	
Skoda Octavia Combi 2.0 TDI DSG First Edition	
Vehicle Identification number	TMBJJ7NX4MY099056
Mileage (Read)	130,915 km
First registration	27 Jan 2021
Number of holders	1
Next periodical technical inspection	05/2026
(Report not on hand)	
Power / Engine displacement	110 kw / 1,968 ccm
Fuel type / Cylinder	Diesel / 4
Gearbox / Number of gears	Automatic / 7
Type of drive	Front drive
Type of vehicle	Station wagon
Colour / colour code	Candy White (F9E)
Doors / Seats	5 / 5
Upholstery type	Cloth
Colour of upholstery	Black-Anthracite



Vehicle details

Maintenance booklet / proof	digital proof / complete	Next maintenance in	9,400 km
Last maintenance on / at	05/2024 at 115,633 km		
Key is / should be	2 / 2	FZG documents	ZB#2 (B) was available (copy), ZB#1 (S) was not available
		Letter No.	GA494637
Previous damage / Accident	None detectable	Repainting	None detectable
Inspection conditions	sufficient	Lifting equipment / pit	yes
Test drive	Not performed	Engine function test	Performed
Manufacturer key number/ type code number	8004 / AWL 00037		
Emission standard	EURO6;WLTP;AP;PI/CI; M, N1 I	Fine dust sticker	
Permitted total weight	1,990 kg	Empty weight	

Tyres

Mounted tyres

#	Tyre size	Type of tyre	Manufacturer	Tread depth
1)	205/60 R16 92H	Winter tyres on Light alloy	Hankook	6mm / 6mm
2)	205/60 R16 92H	Winter tyres on Light alloy	Hankook	6mm / 6mm

Replacement

Typ	Tyre size	Type of tyre	Manufacturer	Tread depth
	Tirefit	Expiration date 11/2024		

Legend: Tread depth information for tires on the left is in the first place, for tires on the right is in the second place on the axle in the direction of travel



## Equipment

### Standard equipment

- Shelves
- Airbag, driver's knee airbag
- Airbag, front side airbags
- Traction control (ASR)
- Automatically dimming exterior mirror (driver's side)
- Exterior mirrors with memory function
- Heated windscreen washer nozzles including 5l washer fluid reservoir
- Grey headliner
- diesel particulate filter
- tachometer
- Electronic parking brake
- Electronic Stabilization Control (ESC)
- Driving profile selection
- Front radar assistant including city emergency braking function and person and cyclist detection
- Transmission: 7-speed direct shift gearbox (DSG)
- Green tec: Automatic start/stop system including brake energy recovery
- Rear window wiper including windscreen washer system
- ISOFIX preparations on the front passenger seat and the outer rear seats including top tether anchorage
- Climatronic air conditioning (2 zones)
- Headrests (5) front and rear height adjustable
- LED rear lights
- Steering wheel: height and length adjustable
- Manual headlight range adjustment
- Rear center armrest with through-loading option
- Engine drag torque control (MSR)
- Parking sensors front and rear
- Upholstery: Cloth
- Radio accessories: 8 speakers
- Radio accessories: voice control
- Tire pressure monitoring
- Wheels: 17" Rotare AERO alloy wheels
- Seat belts
- Seats: Heated front seats
- Seats: Height-adjustable driver and passenger seats
- Seats: Rear seat backrest 60:40 split folding
- SKODA Infotainment Online
- Lane keeping assistant (Lane Assist)
- 12-V socket in the trunk
- Telephone: Phonebox with inductive charging function (connection via the external antenna)
- Bluetooth hands-free phone system
- Immobiliser
- Airbag, driver and passenger
- Airbag, head airbags
- Anti-lock braking system (ABS)
- Dashboard center section with fabric cover
- Exterior mirrors electrically adjustable and heated
- Exterior mirrors, electrically folding
- Hill start assist including auto-hold function
- Hydraulic brake assist (HBA)
- Roof rails, anodized
- Digital instrument cluster (Virtual Cockpit) 10.2"
- Third brake light
- Electronic transverse differential lock (XDS+)
- Driving light assistant
- Electric windows front and rear, including anti-pinch protection and child safety lock
- Cruise control system
- Tinted windows
- Taillights in crystal glass look and animated indicators
- Heated rear window
- Interior mirror automatically dimming
- Kessy, keyless entry and start-stop system
- Electronic child lock
- Removable trunk cover
- LED fog lights
- LED headlights with LED daytime running lights
- Steering wheel: Leather steering wheel with multifunction buttons with shift paddles
- Front center armrest, including storage compartment
- Columbus navigation system with capacitive 10" color display
- Radio accessories: 2 USB-C ports at the front
- Radio accessories: Digital radio reception DAB+
- Rain sensor
- Tire mobility set
- Power steering, electromechanical
- Safety lights in the front side doors
- Seats: Electrically adjustable front seats with memory function
- SKODA Care Connect
- Speed limiter
- Lane change and rear traffic assistant as well as exit warning
- Phone: SmartLink (MirrorLink, Apple CarPlay, Android Auto)
- Phone: Wireless SmartLink for Apple CarPlay
- Lashing eyes in the trunk
- Central locking including remote control integrated in the key and EASY Start



## Extra equipment

- Paintwork: Special paintwork Uni
- Package: Travel & Comfort (DSG) (Traveler assistance system: - Traffic sign recognition - Predictive and adaptive cruise control (pACC) - Adaptive lane keeping assistant - Emergency and traffic jam assistant (with DSG) - Capacitive steering wheel with hands-off detection - Adaptive cruise control (ACC) (control range 210 km/h) - Drowsiness detection - Driving profile selection - Adaptive chassis (DCC) - Automatically dimming exterior mirror (driver's side))
- Package: Columbus Plus infotainment package (Combi) (Columbus navigation system - Infotainment Online (3-year term) - Head-Up Display - Electric tailgate operation - Comfort opening - Luggage net partition)
- Rear view camera
- 230 V socket and USB charging port (230 V socket and 2 x USB charging ports in the rear and USB charging port in the rearview mirror)
- Heated windshield

## Brief expert findings

Documents submitted	At the time of the inspection, the registration certificate Part 2 (letter) was available, but the registration certificate Part 1 (certificate) was not. (Copy)
VIN comparison	The vehicle identification number (VIN) was read from the vehicle and its conformity with the submitted documents was verified during the inspection by the undersigned.
Inspection	The inspection conditions were sufficient for the assessment of the vehicle. Lifting equipment and a pit were available for examining the vehicle.
Test drive	No test drive/maneuvering was carried out during the inspection of the vehicle.
Engine function test	An engine test run was performed.

## Value reducing factors

No.	Component group	Description
1	Equipment	Tirefit filler - Expired - Replace
2	Seat - front	Seat cover - left side - Soiled - Clean
3	Seat - rear	Back seat - Soiled - Clean
4	Trim / covers	Trim / covers - Scratched - Loss in value
5	Door - rear right side	Door - Scratched - Smart repair
6	Door - front right side	Door - Scratched - Smart repair
7	Rear bumper	Rear bumper - Scratched - Repair and paint
8	Wheel / tyres	Wheel rims - complete set (höherwertiger 17 Zoll Originalradsatz) - Differs from the original configuration - repair according to calculation

## Wear and tear

No.	Component group	Description
1	Trim / covers	Boot lid - interior trim - Scratched - No deduction
2	Vehicle glazing	Windscreen - Stone chips - No deduction
3	Front bumper	Front bumper (Kratzer) - Stone chips - No deduction
4	Bonnet	Bonnet (Kratzer) - Stone chips - No deduction
5	Sill - left side	Sill - Scratched - No deduction
6	Vehicle glazing	Rear window - Scratch(es) - No deduction

The vehicle shows signs of wear commensurate with its age and use.



## Order/Scope of order

The order was placed to prepare a sales report for the vehicle described. This includes the following:

- Description of core relevant information about the vehicle
- Documentation of equipment features  
(*Delivery by third-party service providers*)
- Documentation of damage, defects, missing parts
- Documentation of previous damage, unrepaired previous damage, repainting
- a brief visual or functional inspection of the equipment details if possible.  
(*Functional tests of driver assistance systems are not included in the scope of services!*)
- a photo documentation of the vehicle

## Basis for the order

This product is based on the Alphabet Fuhrpark GmbH guidelines for vehicle returns and valuations. The expert makes the explicit findings in each individual case objectively within the framework of the specified standards based on his or her own expertise.

The vehicle inspection takes place in a disassembled state.

Damage or defects that can only be detected during disassembly/diagnosis work or through advanced knowledge remain within the scope of the prognosis risk. An extended risk exists for concealed defects caused by fraudulent deception and not identifiable by the expert.

Damage or defects resulting from normal use or wear and tear of the vehicle will be accepted according to the applicable standard.

There was no explicit identification or monetary consideration of the expected features within the product.

Features which in their nature and severity slightly exceed normal use but do not constitute unacceptable damage will be documented and identified under signs of use if necessary.

Damage or defects which, according to the underlying standard, can no longer be attributed to normal use or wear and tear are listed in the product under "Depreciating Factors".

Depending on the product specification, a monetary ID can be provided. If this takes place, the costs can be 100% d or pro rata depending on the vehicle's age and mileage.

## Previous damages

Apparently, no repaired previous damage could be found on the vehicle.

## Comments

Die Zulässigkeit des montierten Radsatzes wurde nicht erbracht.

Radsatz abweichend Auslieferung.





**Figure 1:** Diagonal front (left)



**Figure 2:** Diagonal front (right)



**Figure 3:** Diagonal rear (left)



**Figure 4:** Diagonal rear (right)



**Figure 5:** Interior - front



**Figure 6:** Interior - rear



Figure 7: Instrument cluster



Figure 8: Instrument panel



Figure 9: Interior 360° view ([Online link](#))



Figure 10: Cargo area

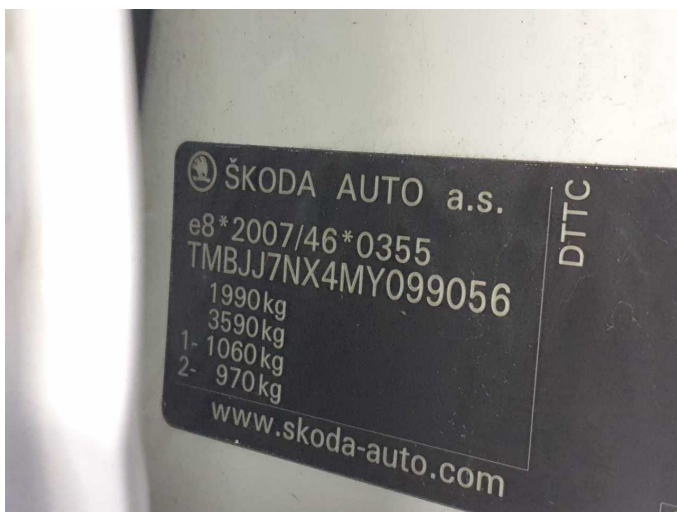


Figure 11: VIN



Figure 12: Mounted tyres



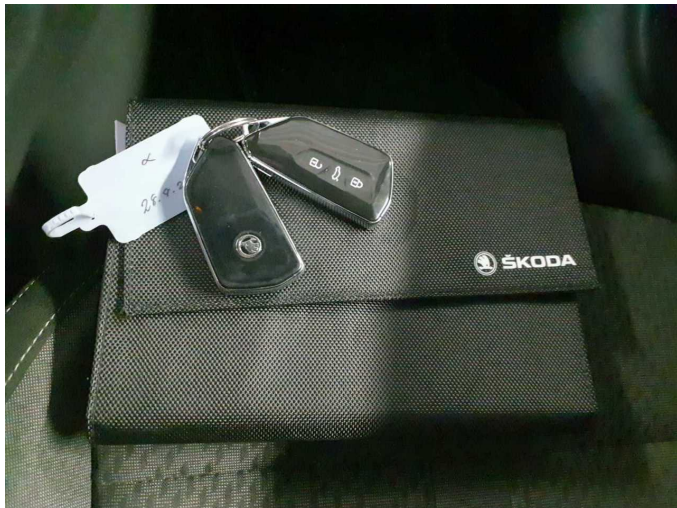


Figure 13: Documents



Figure 14: Navigation



Figure 15: Misc.



Figure 16: Misc.



Figure 17: Misc.



Figure 18: Misc.





Figure 19: Misc.



Figure 20: Misc.



Figure 21: Misc.



Figure 22: Misc.

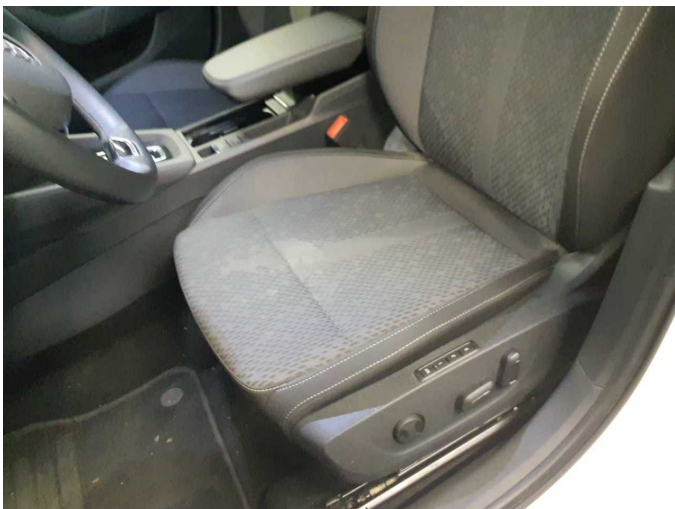


Figure 23: Misc.

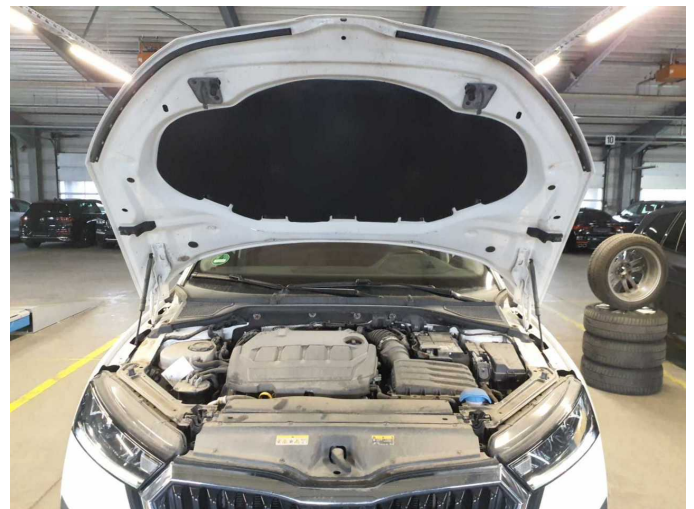


Figure 24: Misc.



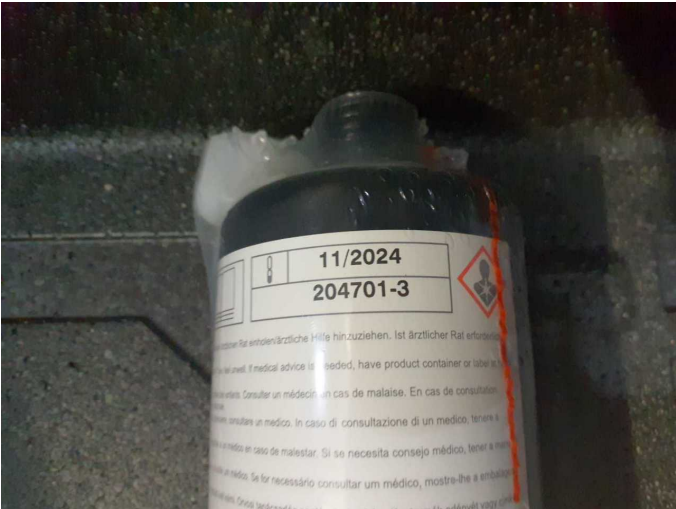


Figure 25: Misc.



Figure 26: Misc.



Figure 27: Misc.



Figure 28: Misc.



Figure 29: Misc.

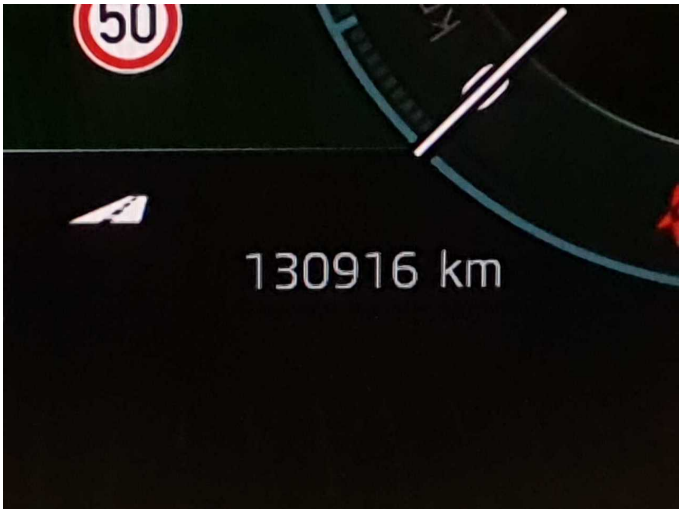
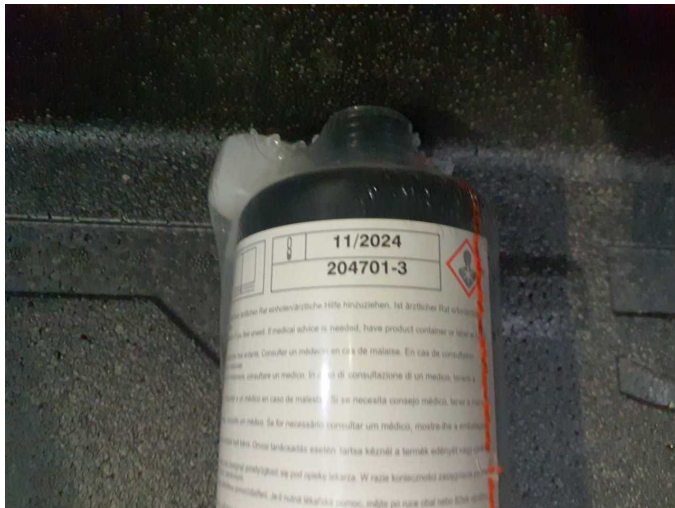


Figure 30: Misc.

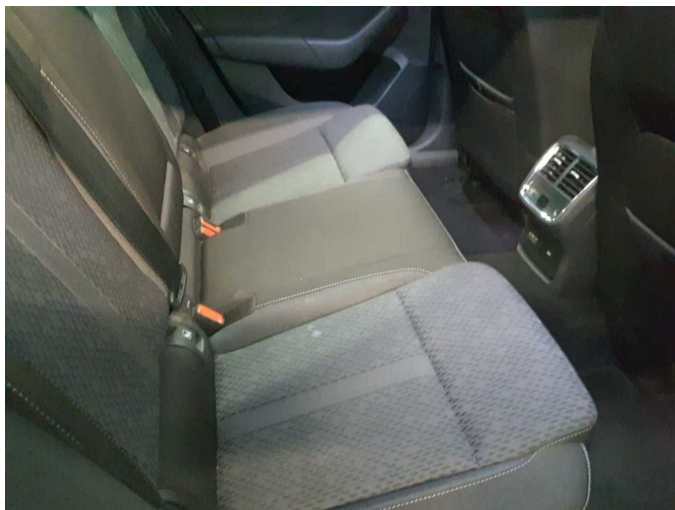




**Damage 1:** Equipment: Tirefit filler - Expired - Replace



**Damage 2:** Seat - front: Seat cover - left side - Soiled - Clean



**Damage 3:** Seat - rear: Back seat - Soiled - Clean



**Damage 3:** Seat - rear: Back seat - Soiled - Clean



**Damage 4:** Trim / covers: Trim / covers - Scratched - Loss in value



**Damage 4:** Trim / covers: Trim / covers - Scratched - Loss in value





**Damage 4:** Trim / covers: Trim / covers - Scratched - Loss in value



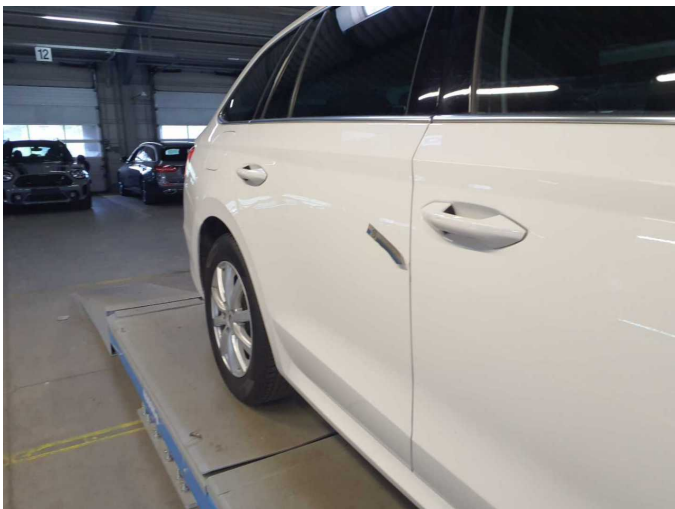
**Damage 4:** Trim / covers: Trim / covers - Scratched - Loss in value



**Damage 4:** Trim / covers: Trim / covers - Scratched - Loss in value



**Damage 4:** Trim / covers: Trim / covers - Scratched - Loss in value



**Damage 5:** Door - rear right side: Door - Scratched - Smart repair



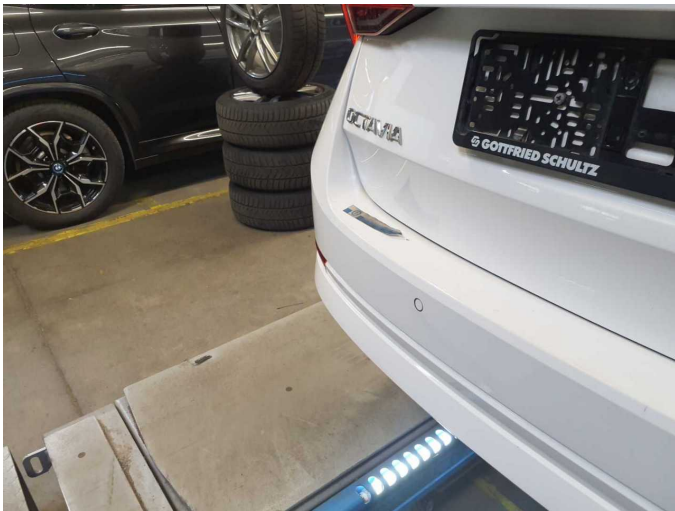
**Damage 5:** Door - rear right side: Door - Scratched - Smart repair



**Damage 6:** Door - front right side: Door - Scratched - Smart repair



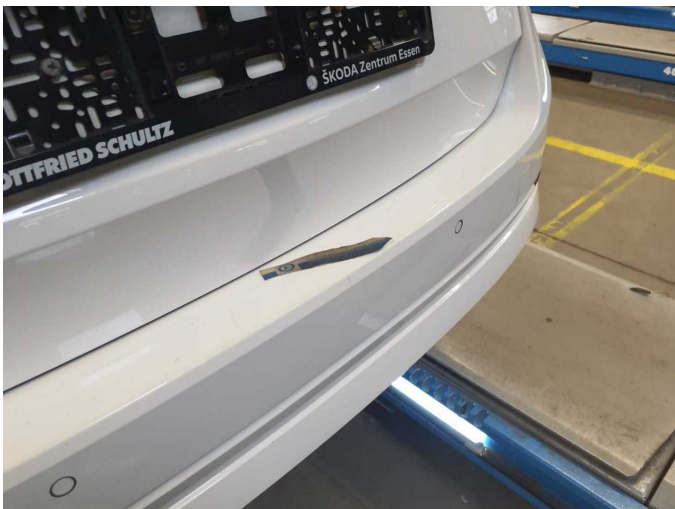
**Damage 6:** Door - front right side: Door - Scratched - Smart repair



**Damage 7:** Rear bumper: Rear bumper - Scratched - Repair and paint



**Damage 7:** Rear bumper: Rear bumper - Scratched - Repair and paint



**Damage 7:** Rear bumper: Rear bumper - Scratched - Repair and paint



**Damage 7:** Rear bumper: Rear bumper - Scratched - Repair and paint





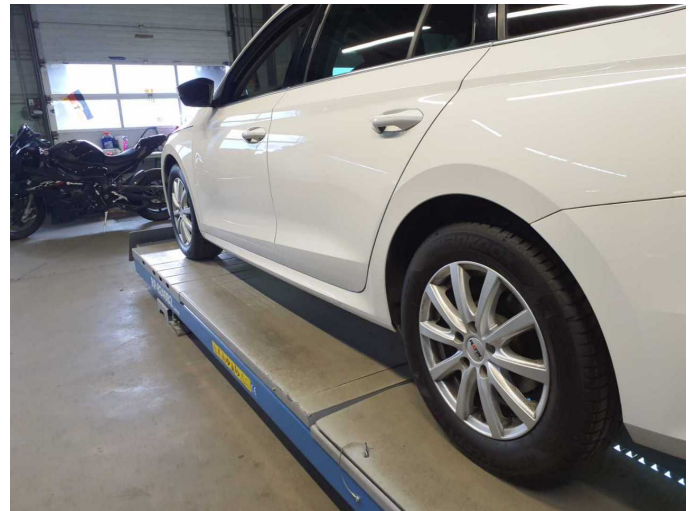
**Damage 7:** Rear bumper: Rear bumper - Scratched - Repair and paint



**Damage 7:** Rear bumper: Rear bumper - Scratched - Repair and paint



**Damage 7:** Rear bumper: Rear bumper - Scratched - Repair and paint



**Damage 8:** Wheel / tyres: Wheel rims - complete set (höherwertiger 17 Zoll Originalradsatz) - Differs from the original configuration - repair according to calculation



**Damage 8:** Wheel / tyres: Wheel rims - complete set (höherwertiger 17 Zoll Originalradsatz) - Differs from the original configuration - repair according to calculation



**Damage 8:** Wheel / tyres: Wheel rims - complete set (höherwertiger 17 Zoll Originalradsatz) - Differs from the original configuration - repair according to calculation

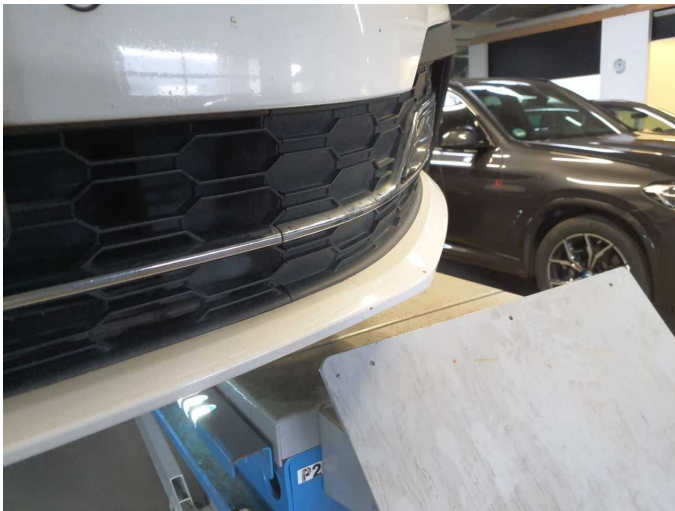




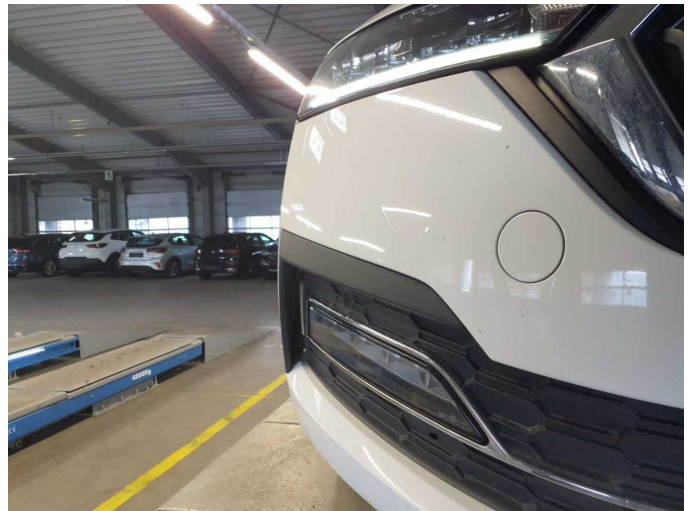
**Wear and tear 3:** Front bumper: Front bumper (Kratzer) - Stone chips - No deduction



**Wear and tear 3:** Front bumper: Front bumper (Kratzer) - Stone chips - No deduction



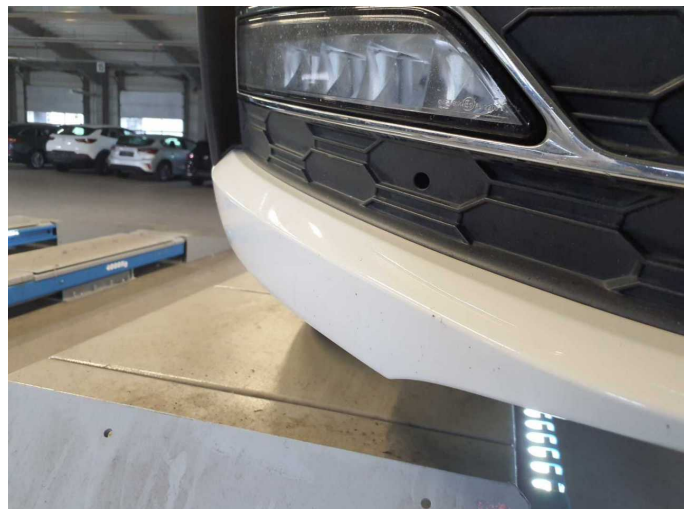
**Wear and tear 3:** Front bumper: Front bumper (Kratzer) - Stone chips - No deduction



**Wear and tear 3:** Front bumper: Front bumper (Kratzer) - Stone chips - No deduction



**Wear and tear 3:** Front bumper: Front bumper (Kratzer) - Stone chips - No deduction



**Wear and tear 3:** Front bumper: Front bumper (Kratzer) - Stone chips - No deduction