



Expertise

Protocol number: 41289412
Order No. / Reference: 25137603
Inspection date: 27 Aug 2025

Manufacturer: Skoda	Model: Octavia Combi 2.0 TDI DSG Style
VIN: TMBJJ7NX0MY142615	



Vehicle details	
Manufacturer / Type / Model / Equipment	
Skoda Octavia Combi 2.0 TDI DSG Style	
Vehicle Identification number	TMBJJ7NX0MY142615
Mileage (Read)	206,198 km
First registration	23 Apr 2021
Number of holders	1
Next periodical technical inspection	08/2026
(Report on hand)	
Power / Engine displacement	110 kw / 1,968 ccm
Fuel type / Cylinder	Diesel / 4
Gearbox / Number of gears	Automatic / 7
Type of drive	Front drive
Type of vehicle	Station wagon
Colour / colour code	Black Magic Pearlescent (F9R)
Doors / Seats	5 / 5
Upholstery type	Leather
Colour of upholstery	Black-Anthracite
Re/Import	no
Vehicle with smoke odor	no
Driving readiness	Roadworthy



Vehicle details

Maintenance booklet / proof	digital proof / complete	Next maintenance in	12,300 km
Last maintenance on / at	04/2025 at 190,300 km		
Key is / should be	2 / 2	FZG documents	ZB#2 (B) was available (copy), ZB#1 (S) was not available
		Letter No.	GA532570
Previous damage / Accident	None detectable	Repainting	None detectable
Inspection conditions	sufficient	Lifting equipment / pit	yes
Test drive	short drive on the company premises	Engine function test	Performed
Driving readiness	Roadworthy		
Manufacturer key number/ type code number	8004 / AWL 00084		
Emission standard	EURO6;WLTP;AP;PI/CI; M, N1 I	Fine dust sticker	
Permitted total weight	1,990 kg	Empty weight	

Tyres

Mounted tyres

#	Tyre size	Type of tyre	Manufacturer	Tread depth
1)	225/45 R18 95Y	Summer tyres on Light alloy	Continental	6mm / 6mm
2)	225/45 R18 95Y	Summer tyres on Light alloy	Continental	6mm / 6mm

Additional tyres

#	Tyre size	Type of tyre	Manufacturer	Tread depth
1)	205/60 R16 96H	Winter tyres on Light alloy	Continental	4mm / 4mm
2)	205/60 R16 96H	Winter tyres on Light alloy	Continental	7mm / 7mm

Replacement

Typ	Tyre size	Type of tyre	Manufacturer	Tread depth
N	125/70 R18 99M	Summer tyres on Steel	Sonstige	3 mm

Legend: Tread depth information for tires on the left is in the first place, for tires on the right is in the second place on the axle in the direction of travel

Equipment

Standard equipment

- Storage compartment in the luggage compartment with cargo element
- Airbag, driver and front passenger (front passenger airbag can be switched off)
- Airbag, driver's knee airbag
- Airbag, head airbags
- Airbag, front side airbags
- Ambient lighting (dashboard, decorative strips at the front and footwell with selectable color climate) in the interior and logo projector outside)
- Automatically dimming exterior mirror (driver's side)
- Exterior mirrors with memory function (boarding spots in the exterior mirrors as well as memory function and mirror lowering)
- hill start assist including auto-hold function
- Glasses compartment on the roof lining
- Roof rails, anodized
- Digital instrument cluster (Virtual Cockpit) 10.2"
- Third brake light
- Electronic transverse differential lock (XDS+)
- Driving light assistant (coming home / leaving home function)
- Front radar assistant including city emergency braking function and person and cyclist detection
- Transmission: 7-speed direct shift gearbox (DSG)
- Green tec: Automatic start/stop system including brake energy recovery
- Rear window wiper including windscreen washer system
- ISOFIX preparations on the front passenger seat and the outer rear seats including top tether anchorage
- Climatronic air conditioning (2-zone) (fully automatic, separately adjustable for driver and front passenger and anti-allergen filter & activated carbon filter - climate-controlled and illuminated glove compartment)
- LED license plate lighting
- Remote release of the rear seat backrests in the trunk
- Steering wheel: Leather steering wheel with multifunction buttons and shift paddles (leather steering wheel and shift lever with leather elements - infotainment and driver assistance system controls)
- Parking sensors front and rear
- Radio: Bolero music system with capacitive 10" color display
- Radio accessories: Digital radio reception DAB+
- Rain sensor
- Tire mobility kit (tire repair spray including compressor)
- Seat belts (three three-point seat belts in the rear)
- Seats: Heated front seats
- Seats: Height-adjustable driver and passenger seats (including lumbar supports)
- Storage compartments (four roof grab handles, rear with coat hooks, holder for the safety vest under the driver's seat, storage compartments in the front door panels with 1.5l bottle holder, storage compartments in the rear door panels with 0.5l bottle holder, ticket holder on the windshield, coat hooks on the B-pillars, storage compartments in the doors with fleece lining)
- Anti-lock braking system (ABS)
- Traction control (ASR)
- Dashboard center section with fabric cover
- Exterior mirrors electrically adjustable and heated
- Exterior mirrors, electrically folding
- Heated windscreen washer nozzles including 5l washer fluid reservoir
- Hydraulic brake assist (HBA)
- Grey headliner
- diesel particulate filter
- tachometer
- Electronic parking brake
- Electronic Stabilization Control (ESC)
- Driving profile selection
- Electric windows front and rear, including anti-pinch protection and child safety lock
- Cruise control system
- Tinted windows
- Taillights in crystal glass look and animated indicators
- Heated rear window
- Interior mirror automatically dimming
- Kessy, keyless entry and start-stop system
- Electronic child lock
- Removable trunk cover
- Headrests (5) front and rear height adjustable
- LED fog lights
- LED rear lights
- LED headlights with LED daytime running lights
- Steering wheel: height and length adjustable
- Manual headlight range adjustment
- Rear center armrest with through-loading option
- Front center armrest, including storage compartment
- Engine drag torque control (MSR)
- Upholstery: Cloth
- Radio accessories: 2 USB-C ports at the front
- Radio accessories: 8 speakers
- Radio accessories: voice control
- Tire pressure monitoring
- Power steering, electromechanical
- Safety lights in the front side doors



- SKODA Care Connect (SOS emergency call function (Emergency Call including automatic activation in the event of an accident with airbag deployment), mobility service (connection option for rapid assistance in the event of a breakdown), information service (connection option to the hotline for all questions about vehicle functions), free remote vehicle access for 1 year (Remote Access) with access to vehicle data and functions via smartphone, e.g., parking position, activating hazard lights, current fuel level)
- Lashing eyes in the trunk
- Central locking including radio remote control integrated in the key and EASY Start

- Seats: Electrically adjustable front seats with memory function
- Seats: Rear seat backrest 60:40 split folding
- Speed limiter
- Lane keeping assistant (Lane Assist)
- Lane change and rear parking assistant
- 12-V socket in the trunk
- Telephone: Phonebox with inductive charging function (connection via the external antenna)
- Phone: SmartLink (MirrorLink, Apple CarPlay, Android Auto)
- Phone: Wireless SmartLink for Apple CarPlay
- Bluetooth hands-free phone system
- Immobiliser

Extra equipment

- Trailer coupling, pivoting including trailer stabilization and adapter
- Finish: pearl effect
- Package: Infotainment Columbus Plus (Combi) (Columbus navigation system - Infotainment Online (3-year term) - Head-Up Display - Luggage net partition)
- Package: Parking & Visibility (cornering light in the fog lights - headlight cleaning system - LED ambient lighting - LED main headlights matrix and dynamic high beam assistant (AFS) - taillights in crystal glass look with animated indicators - rear view camera - park assist)
- Package: Travel & Comfort (DSG) (Traveler assistance system: - Traffic sign recognition - Predictive and adaptive cruise control (pACC) - Adaptive lane keeping assistant - Emergency and traffic jam assistant (with DSG) - Capacitive steering wheel with hands-off detection - Adaptive cruise control (ACC) (control range 210 km/h) - Drowsiness detection - Driving profile selection - Adaptive chassis (DCC) - Automatically dimming exterior mirror (driver's side))
- Wheels: 18" Perseus alloy wheels, anthracite, high-sheen (7.5J x 18, ET 48 with 225/45 R18 tires)
- Auxiliary heating
- Variable loading floor in the trunk including organizer and aluminum crossbars
- Heated windshield
- Comfort opening with electric tailgate operation (including semi-automatic luggage compartment blind)
- Steering wheel: Heated steering wheel in sports design with shift paddles
- Package: Comfort & Relax (Combi) (3-zone Climatronic - Sunset (rear window and rear side windows dark tinted) - Acoustic glazing in the front side windows - Heated front and outer rear seats - Heated steering wheel - 230 V socket and 3 x USB charging ports - Sun blinds in the rear doors - Multifunctional storage in the trunk - Rear headrests - Semi-automatic luggage compartment blind)
- Package: Simply Clever for variable loading floor (media holder - tablet holder - waste bin - 3rd vehicle key)
- Electric panoramic sunroof (no glasses compartment on the roof lining)
- Radio accessories: CANTON sound system and 18" steel spare wheel (12 speakers (10 speakers, 1 central speaker, 1 subwoofer in the spare wheel well) - 18" steel spare wheel (125/70 R18 tires) including jack and wheel wrench)
- Seats: Electrically adjustable ergonomic comfort seats in the front (AGR seal of approval) (massage function - pull-out leg rest - seat ventilation - leather interior (combined with high-quality materials))
- First aid kit, warning triangle, floor mats

Brief expert findings

Documents submitted	At the time of the inspection, the registration certificate Part 2 (letter) was available, but the registration certificate Part 1 (certificate) was not. (Copy)
VIN comparison	The vehicle identification number (VIN) was read from the vehicle and its conformity with the submitted documents was verified during the inspection by the undersigned.
Inspection	The inspection conditions were sufficient for the assessment of the vehicle. Lifting equipment and a pit were available for examining the vehicle.
Test drive	A short maneuvering and shunting trip was carried out on the company premises.
Engine function test	An engine test run was performed.
Driving readiness	The vehicle was drivable at the time of inspection.



Value reducing factors

No.	Component group	Description
1	Front bumper	Air-inlet grille (Folgekosten möglich) - Malposition - Un- / install
2	Trim / covers	Boot lid - interior trim (Folgekosten möglich) - Malposition - Un- / install
3	Interior	Interior (Laderaumboden; Adblue Rückstände) - Soiled - Clean
4	Trim / covers	Floor mats - Holes - Replace
5	Roof	Roof rail - right side - dent(s) - Smart repair
6	Side panel - rear left side	Sill - Scratch(es) - Smart repair
7	Side panel - rear left side	Side panel - Scratch(es) - Smart repair
8	Wheel / tyres	Alloy rim - rear right side - Scratched - Loss in value
9	Door - rear right side	Door (an Kante) - Dent / paintcoat damage - Repair and paint
10	Sill - right side	Sill - Dent / paintcoat damage - Repair and paint
11	Rear bumper	Rear bumper - Scratched - Paint
12	Equipment	Vehicle key with remote control - Broken / torn - Replace
13	Front bumper	Front bumper - Scratched - Paint
14	Side panel - rear right side	Side panel - Dent / paintcoat damage - Repair and paint
15	Bonnet	Bonnet - Stone chips - Paint

Wear and tear

No.	Component group	Description
1	Rear bumper	Spoiler - Scratched - No deduction
2	Door - front left side	Door - Scratch(es) - Cover / polish
3	2nd wheel set	1 alloy rim (Kein Teil der Ausstattung) - Scratched - No deduction
4	2nd wheel set	2 tyres (Profiltiefe; Kein Teil der Ausstattung) - Does not meet the leasing specifications - No deduction
5	Wheel / tyres	Alloy rim - rear right side - Scratched - No deduction
6	Vehicle glazing	Windscreen - Stone chips - No deduction
7	Door - front right side	Door (Polieren; Folgekosten möglich) - Scratch(es) - Cover / polish
8	Body	Body - Scratch(es) - No deduction

The vehicle shows signs of wear commensurate with its age and use.

Order/Scope of order

The order was placed to prepare a sales report for the vehicle described. This includes the following:

- Description of core relevant information about the vehicle
- Documentation of equipment features
(*Delivery by third-party service providers*)
- Documentation of damage, defects, missing parts
- Documentation of previous damage, unrepaired previous damage, repainting
- a brief visual or functional inspection of the equipment details if possible.
(*Functional tests of driver assistance systems are not included in the scope of services!*)
- a photo documentation of the vehicle



Basis for the order

This product is based on the Alphabet Fuhrpark GmbH guidelines for vehicle returns and valuations. The expert makes the explicit findings in each individual case objectively within the framework of the specified standards based on his or her own expertise.

The vehicle inspection takes place in a disassembled state.

Damage or defects that can only be detected during disassembly/diagnosis work or through advanced knowledge remain within the scope of the prognosis risk. An extended risk exists for concealed defects caused by fraudulent deception and not identifiable by the expert.

Damage or defects resulting from normal use or wear and tear of the vehicle will be accepted according to the applicable standard.

There was no explicit identification or monetary consideration of the expected features within the product.

Features which in their nature and severity slightly exceed normal use but do not constitute unacceptable damage will be documented and identified under signs of use if necessary.

Damage or defects which, according to the underlying standard, can no longer be attributed to normal use or wear and tear are listed in the product under "Depreciating Factors".

Depending on the product specification, a monetary ID can be provided. If this takes place, the costs can be 100% d or pro rata depending on the vehicle's age and mileage.

Previous damages

Apparently, no repaired previous damage could be found on the vehicle.

Comments

- Winterradsatz ist kein Bestandteil des Auslieferumfangs.



Figure 1: Diagonal front (left)



Figure 2: Diagonal front (right)



Figure 3: Diagonal rear (left)



Figure 4: Diagonal rear (right)



Figure 5: Interior - front



Figure 6: Interior - rear



Figure 7: Instrument cluster



Figure 8: Instrument panel



Figure 9: interior 360° view



Figure 10: Cargo area



Figure 11: VIN



Figure 12: Mounted tyres



Figure 13: Documents



Figure 14: Documents



Figure 15: Documents

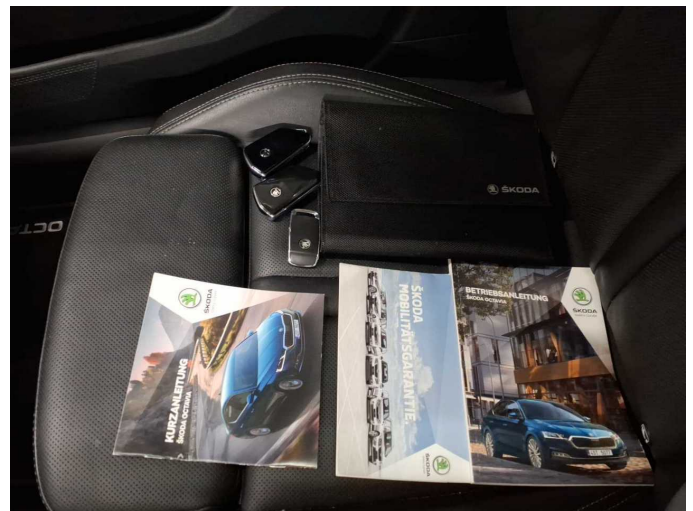


Figure 16: Documents



Figure 17: Additional tyres

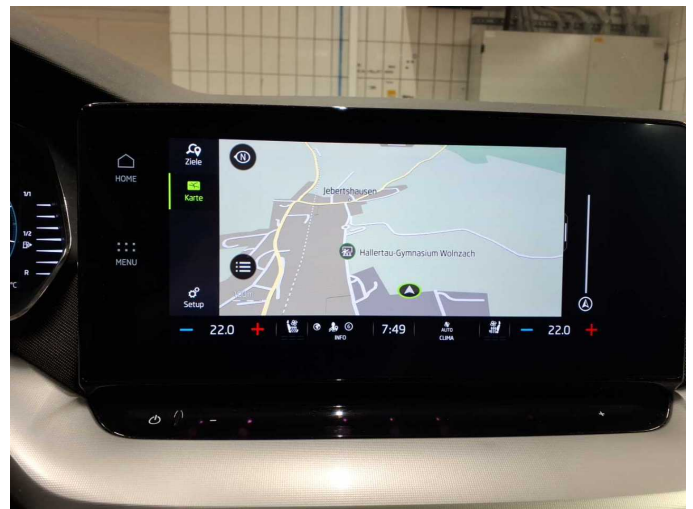


Figure 18: Navigation



Figure 19: Misc.



Figure 20: Misc.



Figure 21: Misc.



Figure 22: Misc.



Figure 23: Misc.

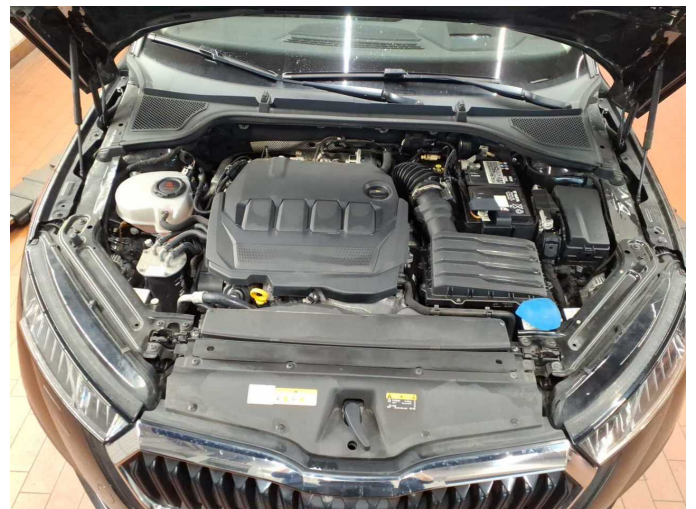


Figure 24: Misc.



Figure 25: Misc.



Figure 26: Misc.



Figure 27: Misc.

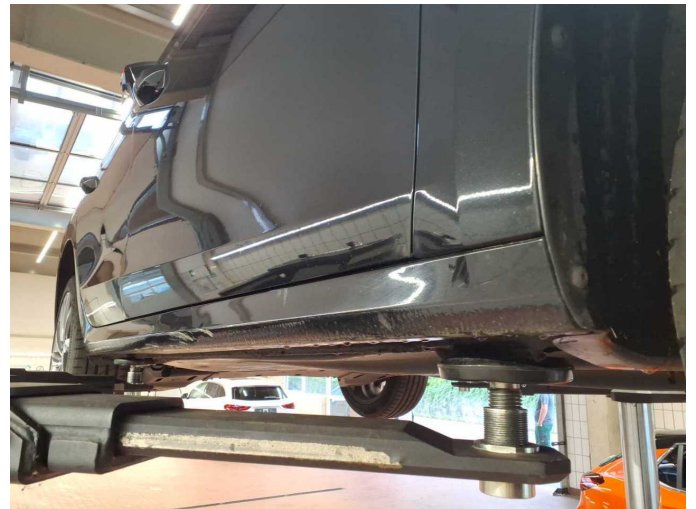


Figure 28: Misc.



Figure 29: Misc.



Figure 30: Misc.



Figure 31: Misc.



Figure 32: Misc.



Figure 33: Misc.



Figure 34: Misc.



Figure 35: Misc.



Figure 36: Misc.



Damage 1: Front bumper: Air-inlet grille (Folgekosten möglich) - Malposition - Un- / install



Damage 1: Front bumper: Air-inlet grille (Folgekosten möglich) - Malposition - Un- / install



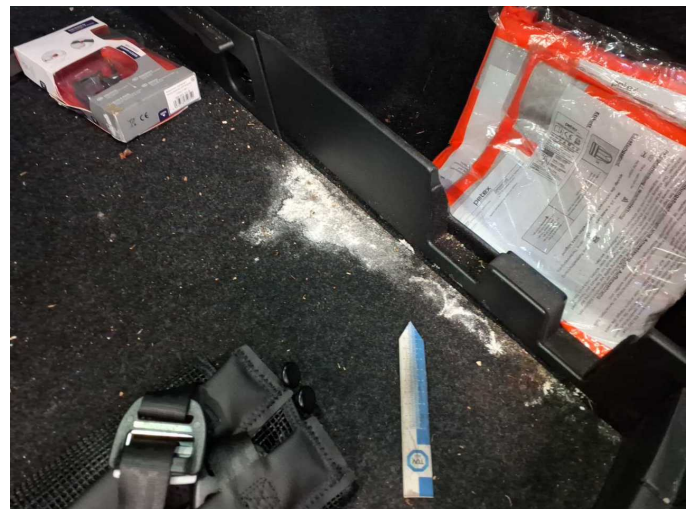
Damage 1: Front bumper: Air-inlet grille (Folgekosten möglich) - Malposition - Un- / install



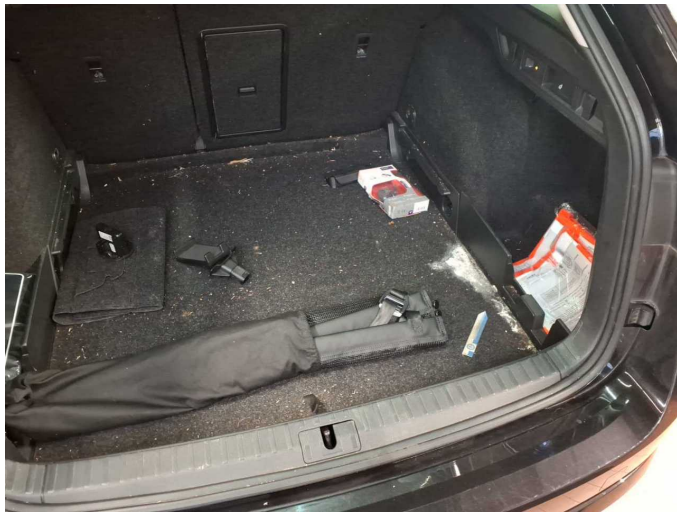
Damage 2: Trim / covers: Boot lid - interior trim (Folgekosten möglich) - Malposition - Un- / install



Damage 2: Trim / covers: Boot lid - interior trim (Folgekosten möglich) - Malposition - Un- / install



Damage 3: Interior: Interior (Laderaumboden; Adblue Rückstände) - Soiled - Clean



Damage 3: Interior (Laderaumboden; Adblue Rückstände) - Soiled - Clean



Damage 4: Trim / covers: Floor mats - Holes - Replace



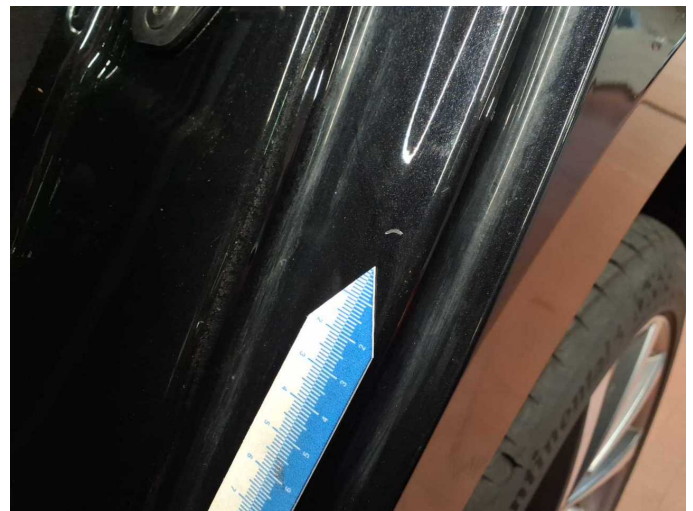
Damage 4: Trim / covers: Floor mats - Holes - Replace



Damage 5: Roof: Roof rail - right side - dent(s) - Smart repair



Damage 5: Roof: Roof rail - right side - dent(s) - Smart repair



Damage 6: Side panel - rear left side: Sill - Scratch(es) - Smart repair



Damage 6: Side panel - rear left side: Sill - Scratch(es) - Smart repair



Damage 7: Side panel - rear left side: Side panel - Scratch(es) - Smart repair



Damage 7: Side panel - rear left side: Side panel - Scratch(es) - Smart repair



Damage 8: Wheel / tyres: Alloy rim - rear right side - Scratched - Loss in value



Damage 8: Wheel / tyres: Alloy rim - rear right side - Scratched - Loss in value



Damage 9: Door - rear right side: Door (an Kante) - Dent / paintcoat damage - Repair and paint



Damage 9: Door - rear right side: Door (an Kante) - Dent / paintcoat damage - Repair and paint



Damage 9: Door - rear right side: Door (an Kante) - Dent / paintcoat damage - Repair and paint



Damage 9: Door - rear right side: Door (an Kante) - Dent / paintcoat damage - Repair and paint



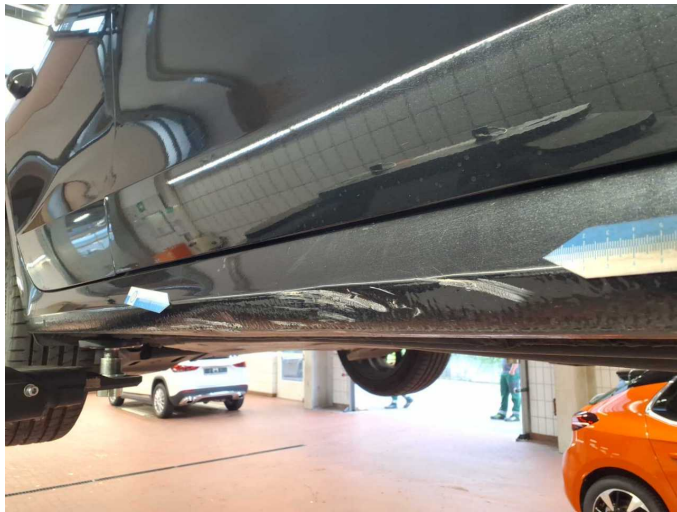
Damage 9: Door - rear right side: Door (an Kante) - Dent / paintcoat damage - Repair and paint



Damage 9: Door - rear right side: Door (an Kante) - Dent / paintcoat damage - Repair and paint



Damage 9: Door - rear right side: Door (an Kante) - Dent / paintcoat damage - Repair and paint



Damage 10: Sill - right side: Sill - Dent / paintcoat damage - Repair and paint



Damage 10: Sill - right side: Sill - Dent / paintcoat damage - Repair and paint



Damage 10: Sill - right side: Sill - Dent / paintcoat damage - Repair and paint



Damage 10: Sill - right side: Sill - Dent / paintcoat damage - Repair and paint



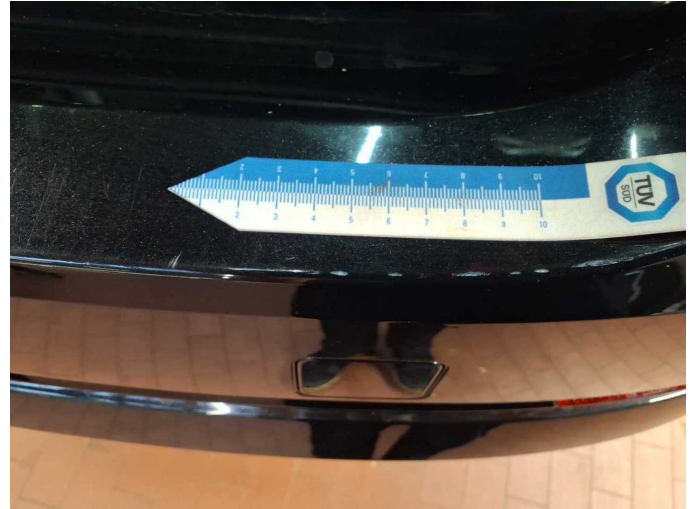
Damage 11: Rear bumper: Rear bumper - Scratched - Paint



Damage 11: Rear bumper: Rear bumper - Scratched - Paint



Damage 11: Rear bumper: Rear bumper - Scratched - Paint



Damage 11: Rear bumper: Rear bumper - Scratched - Paint



Damage 11: Rear bumper: Rear bumper - Scratched - Paint



Damage 12: Equipment: Vehicle key with remote control - Broken / torn - Replace



Damage 13: Front bumper: Front bumper - Scratched - Paint



Damage 13: Front bumper: Front bumper - Scratched - Paint



Damage 13: Front bumper: Front bumper - Scratched - Paint



Damage 13: Front bumper: Front bumper - Scratched - Paint



Damage 13: Front bumper: Front bumper - Scratched - Paint



Damage 13: Front bumper: Front bumper - Scratched - Paint



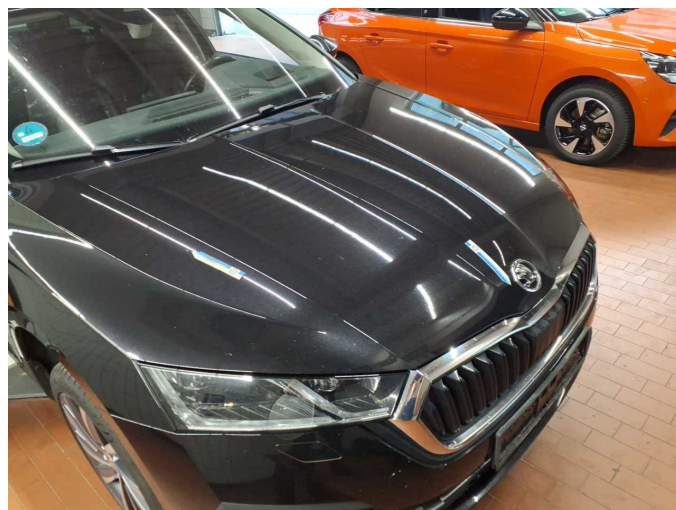
Damage 14: Side panel - rear right side: Side panel - Dent / paintcoat damage - Repair and paint



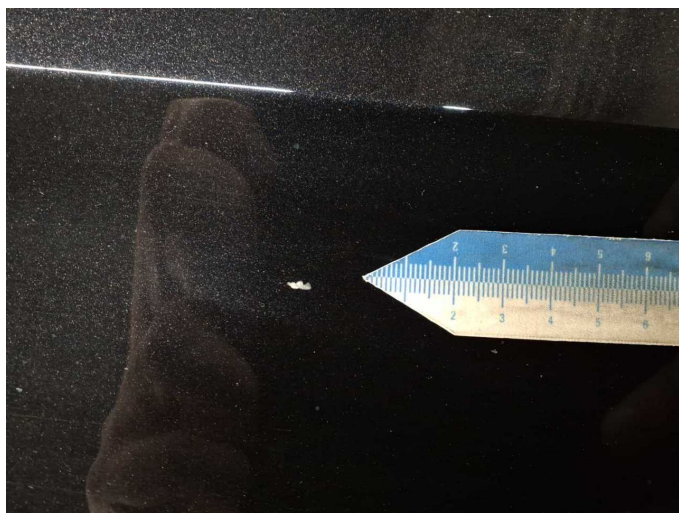
Damage 14: Side panel - rear right side: Side panel - Dent / paintcoat damage - Repair and paint



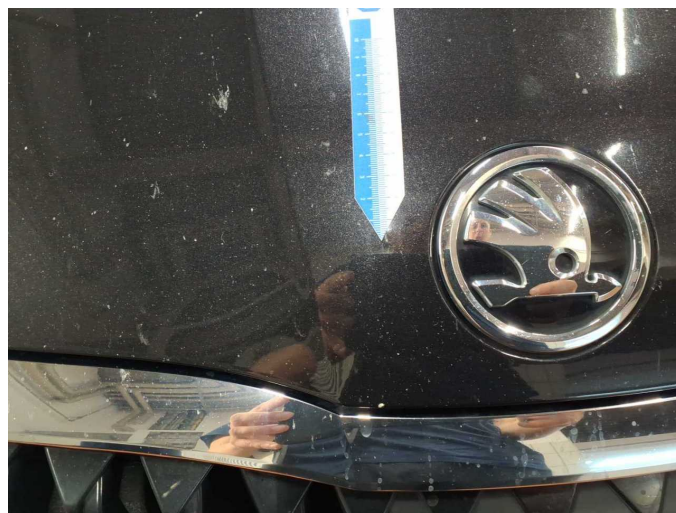
Damage 14: Side panel - rear right side: Side panel - Dent / paintcoat damage - Repair and paint



Damage 15: Bonnet: Bonnet - Stone chips - Paint



Damage 15: Bonnet: Bonnet - Stone chips - Paint



Damage 15: Bonnet: Bonnet - Stone chips - Paint



Wartungshistorie

(gemäß Auftraggeber Informationen)

Fahrgestellnummer: TMBJJ7NX0MY142615
Hersteller / Modell: SKODA SKODA Octavia Combi 2.0 TDI DSG Style

Datum	KM-Stand	Beschreibung
30.04.2025	190.300	Bremsflüssigkeit; Bremsflüssigkeit ern; Kraftstofffilter ern; Luftfiltereinsatz ern; Motoröl b. Wartung; Ölfilter ern; Regelwartungsdienst; Systemtest/ Eigendiagnose; Wartung Sonstiges
14.08.2024	155.415	AU; Motoröl b. Wartung; Ölfilter ern; Regelwartungsdienst; Wartung Sonstiges
29.12.2023	121.587	Bremse Sonstiges; Bremsklötze vorne; Bremsscheiben vorne; Getriebeöl ern/prüfen; Motoröl b. Wartung; Ölfilter ern; Regelwartungsdienst; Wartung Sonstiges
01.03.2023	93.011	Bremse Sonstiges; Bremsflüssigkeit; Bremsflüssigkeit ern; Bremsklötze hinten; Regelwartungsdienst; Wartung Sonstiges
17.01.2023	84.225	Kraftstofffilter ern; Luftfiltereinsatz ern; Motoröl b. Wartung; Ölfilter ern; Ölwechsel; Wartung Sonstiges; Wartung Sonstiges
22.09.2022	66.927	Bremse Sonstiges; Bremsklötze vorne; Bremsscheiben vorne; Wartung Sonstiges
22.06.2022	57.905	Motoröl b. Wartung; Ölfilter ern; Regelwartungsdienst; Wartung Sonstiges; Wartung Sonstiges
21.12.2021	36.261	Wartung Sonstiges
08.11.2021	31.370	Motoröl b. Wartung; Ölfilter ern; Regelwartungsdienst; Wartung Sonstiges; Wartung Sonstiges