



Expertise

Protocol number: 41174049
Order No. / Reference: 25113494
Inspection date: 22 Aug 2025

Manufacturer: Skoda
VIN: TMBJH9NP0P7007829

Model: Superb Combi 2.0 TDI DSG Premium Edition



Vehicle details	
Manufacturer / Type / Model / Equipment	
Skoda Superb Combi 2.0 TDI DSG Premium Edition	
Vehicle Identification number	TMBJH9NP0P7007829
Mileage (Read)	125,740 km
First registration	3 Aug 2022
Number of holders	1
Power / Engine displacement	110 kw / 1,968 ccm
Fuel type / Cylinder	Diesel / 4
Gearbox / Number of gears	Automatic transmission / 7
Type of drive	Front drive
Type of vehicle	Station wagon
Colour / colour code	Black Magic Perleffekt
Doors / Seats	5 / 5
Upholstery type	Cloth
Colour of upholstery	Black



Vehicle details

Maintenance booklet / proof	digital proof / complete	Next maintenance in	17,500 km
Last maintenance on / at	05/2025 at 115,982 km		
Key is / should be	2 / 2	FZG documents	ZB#2 (B) was available (copy), ZB#1 (S) was not available
		Letter No.	GJ950555
Previous damage / Accident	Detectable	Repainting	None detectable
Inspection conditions	sufficient	Lifting equipment / pit	yes
Test drive	Not performed	Engine function test	Performed
Manufacturer key number/ type code number	8004 / APL 01977		
Emission standard	EURO6;WLTP;AP;PI/CI; M, N1 I	Fine dust sticker	
Permitted total weight	2,196 kg	Empty weight	

Tyres

Mounted tyres

#	Tyre size	Type of tyre	Manufacturer	Tread depth
1)	215/55 R17 94V	Summer tires (with run-flat tires) on Light alloy	Continental	6mm / 6mm
2)	215/55 R17 94V	Summer tires (with run-flat tires) on Light alloy	Continental	6mm / 6mm

Additional tyres

#	Tyre size	Type of tyre	Manufacturer	Tread depth
1)	215/60 R16 95H	Winter tires (with run-flat tires) on Light alloy	Pirelli	5mm / 5mm
2)	215/60 R16 95H	Winter tyres on Light alloy	Continental	7mm / 7mm

Replacement

Typ	Tyre size	Type of tyre	Manufacturer	Tread depth
	Tirefit	Expiration date 06/2026		

Legend: Tread depth information for tires on the left is in the first place, for tires on the right is in the second place on the axle in the direction of travel

Equipment

Standard equipment

- Storage compartments closed, behind the wheel arches in the trunk including cargo elements
- Airbag, driver's knee airbag
- Airbag, front side airbags
- Traction control (ASR)
- Exterior mirrors and door handles in body color
- Illuminated glove compartment
- Hydraulic brake assist (HBA)
- Roof rails, anodized
- Diesel particulate filter and SCR catalyst
- tachometer
- Dynamic Light Assistant (Masked Permanent High Beam)
- Electronic parking brake including auto-hold function
- Electronic Stabilization Control (ESC)
- Chassis: Sports suspension (15 mm lowering)
- Front radar assistant including city emergency braking function
- Cruise control including speed limiter
- Tinted windows
- Rear window wiper including windscreen washer system
- Kessy, keyless entry and start-stop system
- Child safety locks for the rear doors and windows, electric
- Trunk cover, roll-up and removable, semi-automatic
- Headrests height adjustable front and rear
- LED ambient lighting
- Remote release of the rear seat backrests in the trunk
- Reading lights at the front and rear of the roof lining
- Rear center armrest with cup holders and through-loading option
- Multifunctional storage under the trunk cover
- LED fog lights with integrated cornering light
- Upholstery: Glamour leather interior
- Radio: Bolero infotainment system
- Radio accessories: In Car Communication
- Radio accessories: USB ports in the front (Type-C) and USB charging port (Type-A) in the center armrest
- Tire mobility set
- Seat belts Superb
- Seats: Heated front seats
- Seats: Adjustable lumbar supports in the front seats
- Seats: Electric operation of the front passenger seat from the rear
- Seats: Rear seat backrest 60:40 split folding
- Sun visor on driver and passenger side with illuminated make-up mirror
- 12-V socket in the trunk
- Telephone: Comfort hands-free Bluetooth
- Chrome-plated elements
- Immobiliser
- Shelves
- Airbag, driver and switchable passenger airbag
- Airbag, head airbags
- Anti-lock braking system (ABS)
- Exterior mirrors electrically adjustable and heated
- Exterior mirrors, electrically folding
- Hill start assist
- Grey headliner
- Decorative inlay Argenzo Zebrano
- Digital instrument cluster (Virtual Cockpit) 10.2"
- Third brake light
- Electric tailgate opening
- Electronic transverse differential lock (XDS+)
- Headlight assistant and rain sensor
- Electric windows front and rear, including anti-pinch protection and child safety lock
- Footwell lighting front and rear
- Transmission: 7-speed direct shift gearbox (DSG)
- Heated rear window
- ISOFIX preparation on the outer rear seats, including top tether
- Air Care Climatronic air conditioning system (3 zones)
- Convenience opening for the electric tailgate
- Metal loading sill protection
- LED taillights in crystal glass look and animated indicators
- Steering wheel: height and length adjustable
- Matrix LED headlights
- Front center armrest with storage compartment
- Engine drag torque control (MSR)
- Multi-collision brake
- Rear parking sensors
- Progressive steering
- Radio accessories: Digital radio reception DAB+
- Radio accessories: voice control
- Radio accessories: Wireless SmartLink for Apple Car Play
- Tire pressure monitoring
- Heated windscreen washer nozzles
- Seat: Massage function for electric driver's seat
- Seats: Ventilated front seats for leather upholstery
- Seats: Electrically adjustable front seats with memory function
- Seats: Height-adjustable front seats
- SKODA Care Connect
- Automatic start/stop system including brake energy recovery
- 12-V socket in the center console front and rear
- Textile floor mats
- Lashing eyes in the trunk
- Central locking with radio remote control



Extra equipment

- Finish: pearl effect
- Package: Assistance (Lane Change Assistant - Rear View Camera - Park Assist - Trailer Hitch Preparation - Active Tire Pressure Monitoring System - Tire Pressure Detection)
- Package: Safety (Proactive occupant protection - Rear side airbags - Isofix anchorage for front passenger seat)
- Radio: CANTON sound system
- Wheels: 17" Stratos alloy wheels (7J x 17" ET 40 with 215/55 R17 tires)
- Steering wheel: Heated steering wheel (2 spokes) (with shift paddles)
- Package: Business Columbus (DSG) (Columbus navigation system - voice control - Wi-Fi hotspot - Wireless Smartlink for Apple CarPlay - capacitive 9.2" touch display in glass design - Phonebox - Traveller assistance system (traffic sign recognition, predictive lane departure warning (pACC), adaptive lane departure warning, emergency and traffic jam assistant, capacitive steering wheel with handbrake detection) - 230 V socket and 3 USB ports, tablet holder - Sunset - Infotainment Online (3-year term))

Brief expert findings

Documents submitted	At the time of the inspection, the registration certificate Part 2 (letter) was available, but the registration certificate Part 1 (certificate) was not. (Copy)
VIN comparison	The vehicle identification number (VIN) was read from the vehicle and its conformity with the submitted documents was verified during the inspection by the undersigned.
Inspection	The inspection conditions were sufficient for the assessment of the vehicle. Lifting equipment and a pit were available for examining the vehicle.
Test drive	No test drive/maneuvering was carried out during the inspection of the vehicle.
Engine function test	An engine test run was performed.

Value reducing factors

No.	Component group	Description
1	Door - rear right side	Door - Scratch(es) - Smart repair
2	Side panel - rear left side	Side panel - Scratch(es) - Paint

Wear and tear

No.	Component group	Description
1	Rear bumper	Rear bumper - Scratch(es) - No deduction

The vehicle shows signs of wear commensurate with its age and use.

Previous damages

No.	Previous damage	Extent of damage (Net)
1	Rear, Provided by user / customer, from 5 Nov 2024	6.147,69 €

Order/Scope of order

The order was placed to prepare a sales report for the vehicle described. This includes the following:

- Description of core relevant information about the vehicle
- Documentation of equipment features
(Delivery by third-party service providers)
- Documentation of damage, defects, missing parts
- Documentation of previous damage, unrepaired previous damage, repainting
- a brief visual or functional inspection of the equipment details if possible.
(Functional tests of driver assistance systems are not included in the scope of services!)
- a photo documentation of the vehicle



Basis for the order

This product is based on the Alphabet Fuhrpark GmbH guidelines for vehicle returns and valuations. The expert makes the explicit findings in each individual case objectively within the framework of the specified standards based on his or her own expertise.

The vehicle inspection takes place in a disassembled state.

Damage or defects that can only be detected during disassembly/diagnosis work or through advanced knowledge remain within the scope of the prognosis risk. An extended risk exists for concealed defects caused by fraudulent deception and not identifiable by the expert.

Damage or defects resulting from normal use or wear and tear of the vehicle will be accepted according to the applicable standard.

There was no explicit identification or monetary consideration of the expected features within the product.

Features which in their nature and severity slightly exceed normal use but do not constitute unacceptable damage will be documented and identified under signs of use if necessary.

Damage or defects which, according to the underlying standard, can no longer be attributed to normal use or wear and tear are listed in the product under "Depreciating Factors".

Depending on the product specification, a monetary ID can be provided. If this takes place, the costs can be 100% d or pro rata depending on the vehicle's age and mileage.

Previous damages

According to available information previous damages were repaired at the vehicle. Traces of repairs, which allow conclusions about the area of repair, were not recognizable during the inspection.

Comments

Das Fahrzeug befand sich zum Besichtigungszeitpunkt in beschädigten, nicht demontierten Zustand. Schadenausweitung möglich, Zusatzkosten können entstehen.

Der Winterradsatz ist nicht Bestandteil der vorliegenden Fahrzeugausstattung.



Figure 1: Diagonal front (left)



Figure 2: Diagonal front (right)



Figure 3: Diagonal rear (left)



Figure 4: Diagonal rear (right)



Figure 5: Interior - front



Figure 6: Interior - rear



Figure 7: Instrument cluster



Figure 8: Instrument panel



Figure 9: interior 360° view



Figure 10: Cargo area



Figure 11: VIN



Figure 12: Mounted tyres



Figure 13: Documents

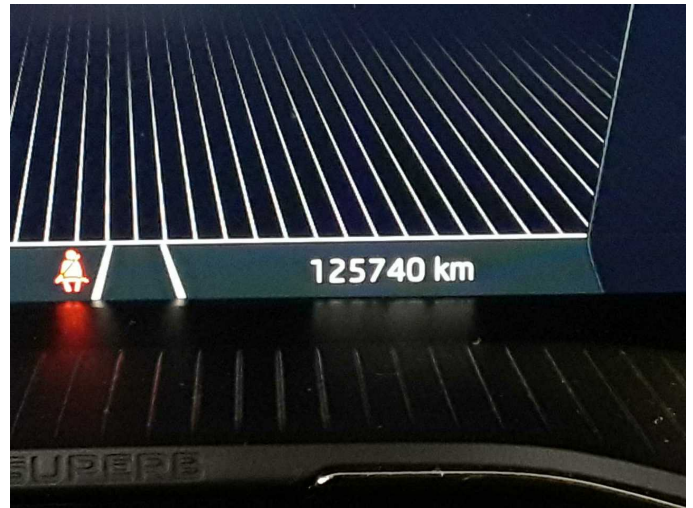


Figure 14: Documents

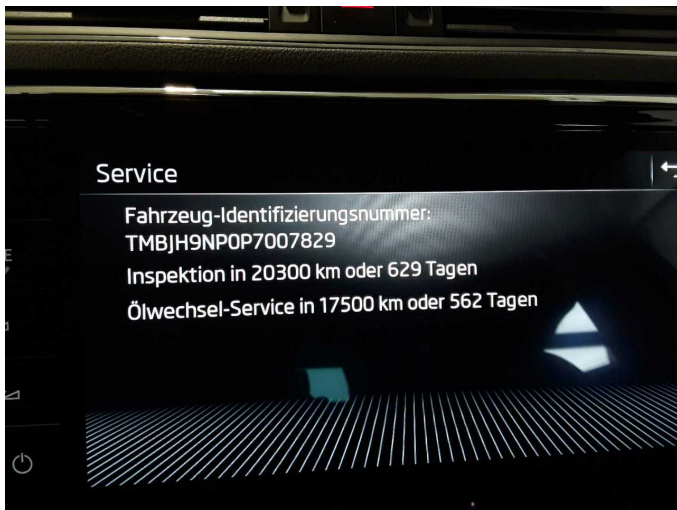


Figure 15: Documents



Figure 16: Additional tyres



Figure 17: Navigation



Figure 18: Misc.



Figure 19: Misc.



Figure 20: Misc.



Figure 21: Misc.

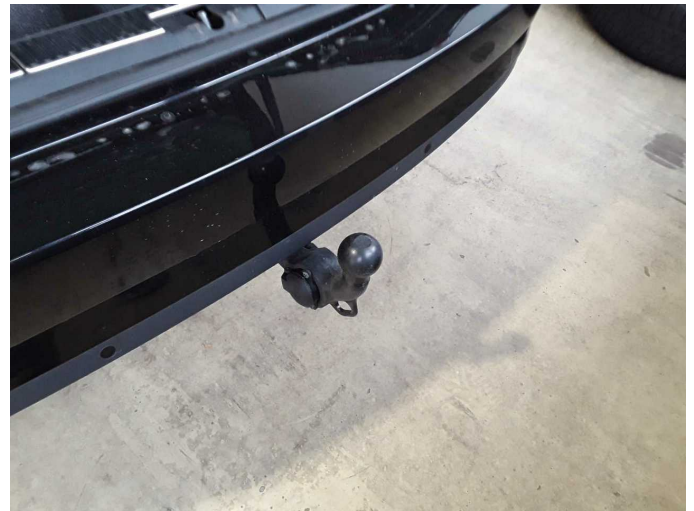
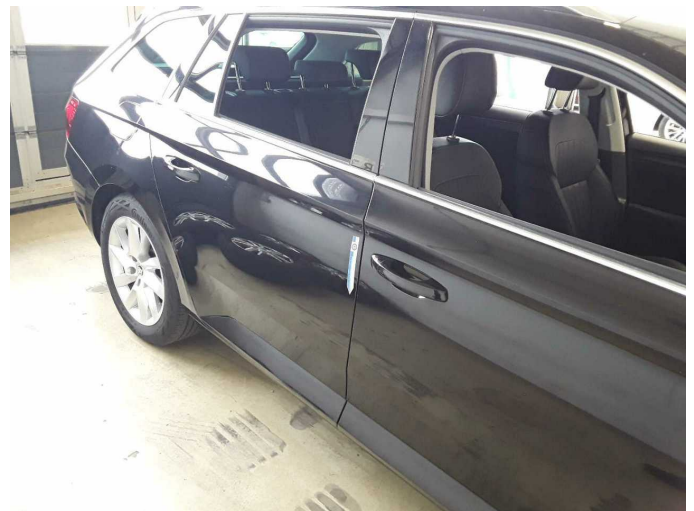


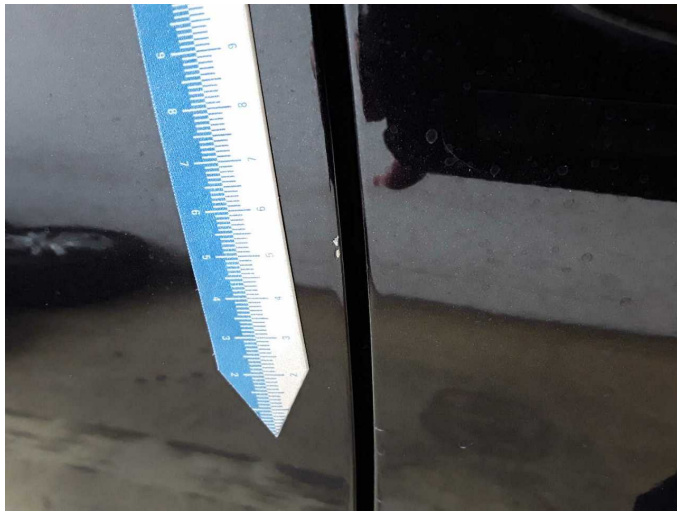
Figure 22: Misc.



Figure 23: Misc.



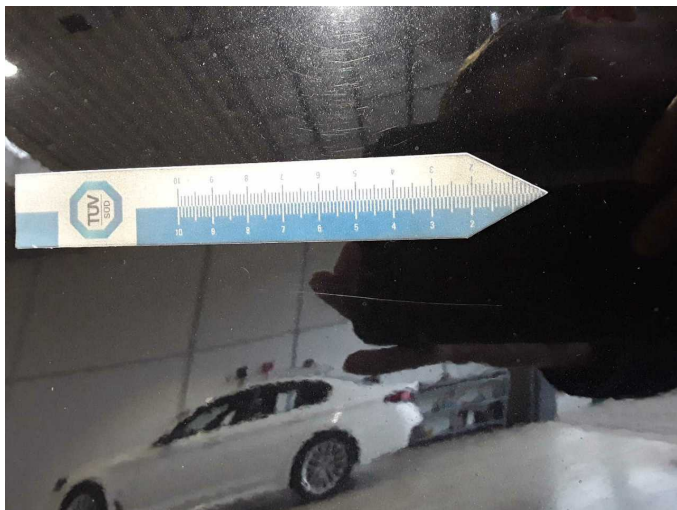
Damage 1: Door - rear right side: Door - Scratch(es) - Smart repair



Damage 1: Door - rear right side: Door - Scratch(es) - Smart repair



Damage 2: Side panel - rear left side: Side panel - Scratch(es) - Paint



Damage 2: Side panel - rear left side: Side panel - Scratch(es) - Paint



Wartungshistorie

(gemäß Auftraggeber Informationen)

Fahrgestellnummer: TMBJH9NP0P7007829

Hersteller / Modell: SKODA SKODA Superb Combi 2.0 TDI DSG Premium Edition

Datum	KM-Stand	Beschreibung
13.05.2025	115.982	Getriebeöl ern/prüfen; Motoröl b. Wartung; Ölfilter ern; Regelwartungsdienst; Wartung Sonstiges
06.09.2024	88.588	Bremse Sonstiges; Bremsflüssigkeit; Bremsflüssigkeit ern; Bremsklötze hinten; Bremsklötze vorne; Bremsscheiben hinten; Bremsscheiben vorne; Kraftstofffilter ern; Luftfiltereinsatz ern; Motoröl b. Wartung; Ölfilter ern; Regelwartungsdienst; Systemtest/Eigendiagnose; Wartung Sonstiges
29.12.2023	57.858	Motoröl b. Wartung; Ölfilter ern; Regelwartungsdienst; Wartung Sonstiges
21.04.2023	30.462	Motoröl b. Wartung; Ölfilter ern; Regelwartungsdienst; Wartung Sonstiges