



Expertise

Protocol number: 41017453  
Order No. / Reference: 25048700  
Inspection date: 12 Aug 2025

Manufacturer: Skoda  
VIN: TMBJH7NP7M7066067

Model: Superb Combi 2.0 TDI DSG Ambition



Vehicle details	
Manufacturer / Type / Model / Equipment	
Skoda Superb Combi 2.0 TDI DSG Ambition	
Vehicle Identification number	TMBJH7NP7M7066067
Mileage (Read)	128,931 km
First registration	14 May 2021
Number of holders	1
Power / Engine displacement	110 kw / 1,968 ccm
Fuel type / Cylinder	Diesel / 4
Gearbox / Number of gears	Automatic / 7
Type of drive	Front drive
Type of vehicle	Station wagon
Colour / colour code	Candy White (F9E)
Doors / Seats	5 / 5
Upholstery type	Cloth
Colour of upholstery	Black



## Vehicle details

<b>Maintenance booklet / proof</b>	digital proof / complete	<b>Next maintenance in</b>	12,300 km
<b>Last maintenance on / at</b>	04/2025 at 122,085 km		
<b>Key is / should be</b>	2 / 2	<b>FZG documents</b>	ZB#2 (B) was available (copy), ZB#1 (S) was not available
		<b>Letter No.</b>	GA537710
<b>Previous damage / Accident</b>	Detectable	<b>Repainting</b>	None detectable
<b>Inspection conditions</b>	Sufficient	<b>Lifting equipment / pit</b>	yes
<b>Test drive</b>	Not performed	<b>Engine function test</b>	Performed
<b>Manufacturer key number/ type code number</b>	8004 / APL 01125		
<b>Emission standard</b>	EURO6;WLTP;AP;PI/CI; M, N1 I	<b>Fine dust sticker</b>	
<b>Permitted total weight</b>	2,196 kg	<b>Empty weight</b>	

## Tyres

### Mounted tyres

#	Tyre size	Type of tyre	Manufacturer	Tread depth
1)	215/60 R16 99V	Summer tyres on Light alloy	Goodyear	6mm / 6mm
2)	215/60 R16 99V	Summer tyres on Light alloy	Continental	5mm / 5mm

### Additional tyres

#	Tyre size	Type of tyre	Manufacturer	Tread depth
1)	215/60 R16 99H	Winter tyres on Light alloy	Bridgestone	5mm / 5mm
2)	215/60 R16 99H	Winter tyres on Light alloy	Bridgestone	5mm / 5mm

### Replacement

Typ	Tyre size	Type of tyre	Manufacturer	Tread depth
	Tirefit	Expiration date 02/2025		

**Legend:** Tread depth information for tires on the left is in the first place, for tires on the right is in the second place on the axle in the direction of travel



## Equipment

### Standard equipment

- Storage compartments closed, behind the wheel arches in the trunk including cargo elements
- Airbag, driver's knee airbag
- Airbag, front side airbags
- Traction control (ASR)
- Exterior mirrors and door handles in body color
- Illuminated glove compartment
- Hydraulic brake assist (HBA)
- Roof rails, black
- Diesel particulate filter and SCR catalyst
- Third brake light
- Electronic parking brake including auto-hold function
- Electronic Stabilization Control (ESC)
- Electric windows front and rear, including anti-pinch protection and child safety lock
- Cruise control including speed limiter
- Tinted windows
- Rear window wiper including windscreen washer system
- Trunk cover, roll-up and removable, semi-automatic
- Headrests height adjustable front and rear
- LED low beam
- Steering wheel: height and length adjustable
- Rear center armrest with cup holders and through-loading option
- Multifunction display in the instrument cluster
- LED fog lights with integrated cornering light
- Radio accessories: 2 USB-A ports in the center console
- Radio accessories: In Car Communication
- Radio accessories: Wireless SmartLink for Apple Car Play
- Tire mobility set
- Heated windscreen washer nozzles
- Seat belts Superb
- Seats: Height-adjustable front seats
- SKODA Care Connect
- Automatic start/stop system including brake energy recovery
- 12-V socket in the center console front and rear
- Chrome-plated elements
- Immobiliser
- Shelves
- Airbag, driver and switchable passenger airbag
- Airbag, head airbags
- Anti-lock braking system (ABS)
- Exterior mirrors electrically adjustable and heated
- Exterior mirrors, electrically folding
- Hill start assist
- Grey headliner
- Decorative inlay silver brushed
- tachometer
- Easy Start (start-stop button instead of ignition lock)
- Electronic transverse differential lock (XDS+)
- Headlight assistant and rain sensor
- Front radar assistant including city emergency braking function
- Transmission: 7-speed direct shift gearbox (DSG)
- Heated rear window
- ISOFIX preparation on the outer rear seats, including top tether
- Paint finish: Uni
- LED rear lights
- Reading lights at the front and rear of the roof lining
- Front center armrest with storage compartment
- Engine drag torque control (MSR)
- Multi-collision brake
- Upholstery: Cloth
- Radio accessories: Digital radio reception DAB+
- Radio accessories: SmartLink+
- Tire pressure monitoring
- Wheels: 16" Orion alloy wheels
- Power steering, electromechanical
- Seats: Adjustable lumbar supports in the front seats
- Seats: Rear seat backrest 60:40 split folding
- Sun visor on driver and passenger side with illuminated make-up mirror
- 12-V socket in the trunk
- Telephone: Comfort hands-free Bluetooth
- Lashing eyes in the trunk
- Central locking with radio remote control

### Extra equipment

- Chassis: Off-road package (15 mm lift - modified damper tuning - engine underbody protection)
- Auxiliary heater with radio remote control
- Climatronic air conditioning (3-zone) (fully automatic, separately adjustable for driver, front passenger and rear)
- Digital instrument cluster (Virtual Cockpit) 10.2"
- Parking sensors front and rear
- Partition grille Skoda Superb Combi
- Rear view camera with washer nozzle
- Seats: Heated front seats



- Package: Business Amundsen (Combi) (dynamic Amundsen radio navigation system - capacitive 8" touch display in glass design - color Maxi-Dot display - Wi-Fi hotspot (use of the data connection of the paired mobile phone) - voice control - phone box with inductive charging function (connection via external antenna) - fatigue detection - 230 V socket and USB ports, tablet holder in the rear - Sunset (rear window and rear side windows dark tinted) - Infotainment Online subscription (3 years) - luggage net partition)
- Paintwork: special paintwork
- Steering wheel: Heated steering wheel (2 spokes) (with shift paddles)
- Sun blind for the rear side windows
- Trailer coupling, pivoting including trailer stabilization

## Brief expert findings

Documents submitted	At the time of the inspection, the registration certificate Part 2 (letter) was available, but the registration certificate Part 1 (certificate) was not. (Copy)
VIN comparison	The vehicle identification number (VIN) was read and the undersigned verified that it matched the documents submitted during the inspection.
Inspection	The inspection conditions were sufficient for the assessment of the vehicle. Lifting equipment and a pit were available for examining the vehicle.
Test drive	No test drive/maneuvering was carried out during the inspection of the vehicle.
Engine function test	An engine test run was performed.

## Value reducing factors

No.	Component group	Description
1	Equipment	Tirefit filler - Expired - Replace
2	Instrument panel	Air nozzle - centre - Damaged - Replace
3	Rear bumper	Rear bumper - Scratched - Paint

## Wear and tear

No.	Component group	Description
1	Vehicle glazing	Windscreen - Stone chips - No deduction
2	Boot lid / rear door	Boot lid - Scratch(es) - No deduction
3	Door - front left side	Door - Scratch(es) - No deduction

The vehicle shows signs of wear commensurate with its age and use.

## Previous damages

No.	Previous damage	Extent of damage (Net)
1	Front, Provided by user / customer, from 9 Apr 2024	1.398,61 €



## Order/Scope of order

The order was placed to prepare a sales report for the vehicle described. This includes the following:

- Description of core relevant information about the vehicle
- Documentation of equipment features  
*(Delivery by third-party service providers)*
- Documentation of damage, defects, missing parts
- Documentation of previous damage, unrepaired previous damage, repainting
- a brief visual or functional inspection of the equipment details if possible.  
*(Functional tests of driver assistance systems are not included in the scope of services!)*
- a photo documentation of the vehicle

## Basis for the order

This product is based on the Alphabet Fuhrpark GmbH guidelines for vehicle returns and valuations. The expert makes the explicit findings in each individual case objectively within the framework of the specified standards based on his or her own expertise.

The vehicle inspection takes place in a disassembled state.

Damage or defects that can only be detected during disassembly/diagnosis work or through advanced knowledge remain within the scope of the prognosis risk. An extended risk exists for concealed defects caused by fraudulent deception and not identifiable by the expert.

Damage or defects resulting from normal use or wear and tear of the vehicle will be accepted according to the applicable standard.

There was no explicit identification or monetary consideration of the expected features within the product.

Features which in their nature and severity slightly exceed normal use but do not constitute unacceptable damage will be documented and identified under signs of use if necessary.

Damage or defects which, according to the underlying standard, can no longer be attributed to normal use or wear and tear are listed in the product under "Depreciating Factors".

Depending on the product specification, a monetary ID can be provided. If this takes place, the costs can be 100% d or pro rata depending on the vehicle's age and mileage.

## Previous damages

According to available information previous damages were repaired at the vehicle. Traces of repairs, which allow conclusions about the area of repair, were not recognizable during the inspection.

## Comments

- Der 2.Radsatz gehört nicht zur Ausstattung und wurde nicht in der Bewertung berücksichtigt.





Figure 1: Diagonal front (left)



Figure 2: Diagonal front (right)



Figure 3: Diagonal rear (left)



Figure 4: Diagonal rear (right)



Figure 5: Interior - front



Figure 6: Interior - rear





Figure 7: Instrument cluster



Figure 8: Instrument panel



Figure 9: interior 360° view



Figure 10: Cargo area

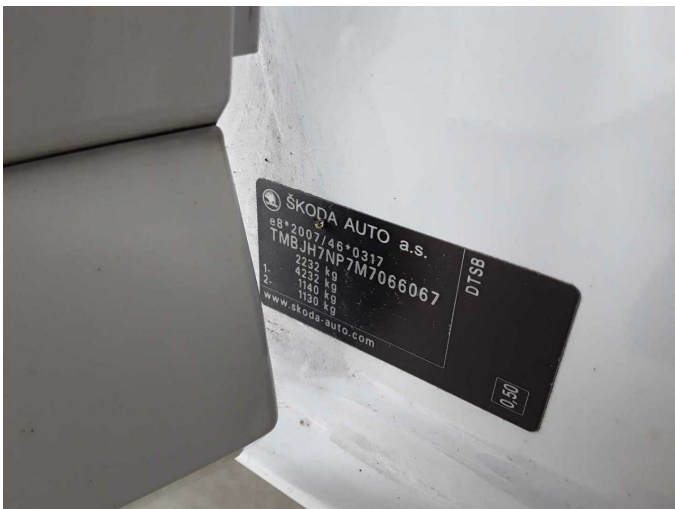


Figure 11: VIN



Figure 12: Mounted tyres





Figure 13: Documents



Figure 14: Documents



Figure 15: Documents



Figure 16: Additional tyres



Figure 17: Additional tyres



Figure 18: Navigation



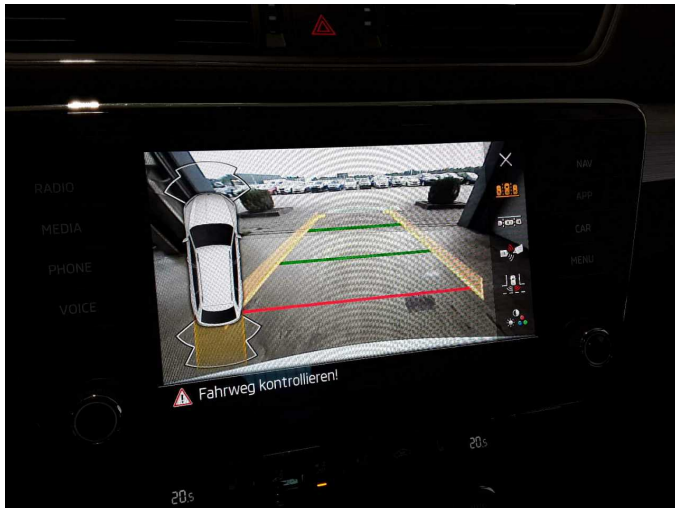


Figure 19: Misc.



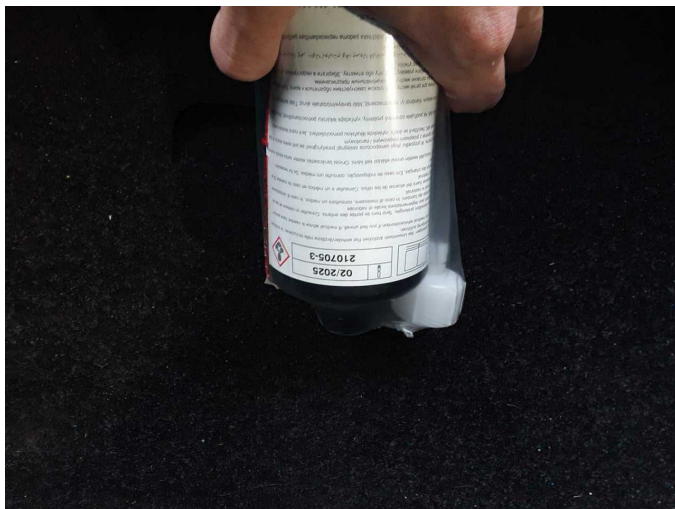
Figure 20: Misc.



Figure 21: Misc.



Figure 22: Misc.



Damage 1: Equipment: Tirefit filler - Expired - Replace



Damage 2: Instrument panel: Air nozzle - centre - Damaged - Replace



**Damage 2:** Instrument panel: Air nozzle - centre - Damaged - Replace



**Damage 3:** Rear bumper: Rear bumper - Scratched - Paint



**Damage 3:** Rear bumper: Rear bumper - Scratched - Paint



# Wartungshistorie

(gemäß Auftraggeber Informationen)

Fahrgestellnummer: TMBJH7NP7M7066067  
Hersteller / Modell: SKODA SKODA Superb Combi 2.0 TDI DSG Ambition

Datum	KM-Stand	Beschreibung
03.04.2025	122.085	Bremsflüssigkeit; Bremsflüssigkeit ern; Getriebeöl ern/prüfen; Motoröl b. Wartung; Ölfilter ern; Regelwartungsdienst; Wartung Sonstiges
15.10.2024	106.908	Batterie ern; Systemtest/Eigendiagnose
19.09.2024	104.715	Bremse Sonstiges; Bremsklötze hinten; Bremsklötze vorne; Bremsscheiben + Klötze h; Bremsscheiben hinten; Motoröl b. Wartung; Ölfilter ern; Ölwechsel; Wartung Sonstiges
13.08.2024	101.864	HU + AU
29.05.2024	95.050	HU + AU
02.04.2024	90.984	Kraftstofffilter ern; Luftfiltereinsatz ern; Regelwartungsdienst; Wartung Sonstiges
18.01.2024	85.645	Motoröl b. Wartung; Ölfilter ern; Ölwechsel; Wartung Sonstiges
10.05.2023	66.320	Motoröl b. Wartung; Ölfilter ern; Ölwechsel; Wartung Sonstiges
22.03.2023	61.708	Bremsflüssigkeit; Bremsflüssigkeit ern; Regelwartungsdienst; Wartung Sonstiges
11.10.2022	44.975	Motoröl b. Wartung; Ölfilter ern; Ölwechsel; Wartung Sonstiges
13.05.2022	30.841	Regelwartungsdienst
09.02.2022	22.650	Motoröl b. Wartung; Ölfilter ern; Ölwechsel; Wartung Sonstiges