



Expertise

Protocol number: 41499606
Order No. / Reference: 25209836
Inspection date: 11 Sept 2025

Manufacturer: Skoda
VIN: TMBJH7NP2M7077378

Model: Superb Combi 2.0 TDI Style



Vehicle details	
Manufacturer / Type / Model / Equipment	
Skoda Superb Combi 2.0 TDI Style	
Vehicle Identification number	TMBJH7NP2M7077378
Mileage (Read)	199,501 km
First registration	29 Jul 2021
Number of holders	1
Power / Engine displacement	110 kw / 1,968 ccm
Fuel type / Cylinder	Diesel / 4
Gearbox / Number of gears	Manual / 6
Type of drive	Front drive
Type of vehicle	Station wagon
Colour / colour code	Quarz-Grau Metallic
Doors / Seats	5 / 5
Upholstery type	Cloth
Colour of upholstery	Black-Anthracite



Vehicle details

Maintenance booklet / proof	digital proof / complete	Next maintenance in	24,900 km
Last maintenance on / at	07/2025 at 194,315 km		
Key is / should be	2 / 2	FZG documents	ZB#2 (B) was available (copy), ZB#1 (S) was not available
		Letter No.	GD061599
Previous damage / Accident	None detectable	Repainting	None detectable
Inspection conditions	sufficient	Lifting equipment / pit	yes
Test drive	Not performed	Engine function test	Performed
Manufacturer key number/ type code number	8004 / APL 01101		
Emission standard	EURO6;WLTP;AP;PI/CI; M, N1 I	Fine dust sticker	
Permitted total weight	2,176 kg	Empty weight	

Tyres

Mounted tyres

#	Tyre size	Type of tyre	Manufacturer	Tread depth
1)	215/55 R17 98V	Summer tyres on Light alloy	Continental	4mm / 4mm
2)	215/55 R17 98V	Summer tyres on Light alloy	Continental	4mm / 4mm

Additional tyres

#	Tyre size	Type of tyre	Manufacturer	Tread depth
1)	215/60 R16 99H	Winter tyres on Light alloy	Continental	5mm / 5mm
2)	215/60 R16 99H	Winter tyres on Light alloy	Continental	8mm / 8mm

Replacement

Typ	Tyre size	Type of tyre	Manufacturer	Tread depth
	Tirefit	Expiration date 10/2028		

Legend: Tread depth information for tires on the left is in the first place, for tires on the right is in the second place on the axle in the direction of travel

Equipment

Standard equipment

- Storage compartments closed, behind the wheel arches in the trunk including cargo elements
- Airbag, driver's knee airbag
- Airbag, front side airbags
- Traction control (ASR)
- Exterior mirrors and door handles in body color
- Illuminated glove compartment
- Hydraulic brake assist (HBA)
- Roof rails, anodized
- Diesel particulate filter and SCR catalyst
- Third brake light
- Easy Start (start-stop button instead of ignition lock)
- Electronic parking brake including auto-hold function
- Electronic Stabilization Control (ESC)
- Electric windows front and rear, including anti-pinch protection and child safety lock
- Front footwell lighting
- Transmission: 6-speed manual transmission
- Heated rear window
- ISOFIX preparation on the outer rear seats, including top tether
- Headrests height adjustable front and rear
- Remote release of the rear seat backrests in the trunk
- Steering wheel: height and length adjustable
- Reading lights at the front and rear of the roof lining
- Rear center armrest with cup holders and through-loading option
- Color multifunction display in the instrument cluster
- LED fog lights with integrated cornering light
- Upholstery: Cloth
- Radio accessories: 2 USB-A ports in the center console
- Radio accessories: In Car Communication
- Radio accessories: Wireless SmartLink for Apple Car Play
- Tire mobility set
- Heated windscreen washer nozzles
- Seat belts Superb
- Seats: Adjustable lumbar supports in the front seats
- Seats: electrically adjustable driver's seat with memory function
- Seats: Height-adjustable front seats
- Seats: Rear seat backrest 60:40 split folding
- Sun visor on driver and passenger side with illuminated make-up mirror
- 12-V socket in the trunk
- Telephone: Comfort hands-free Bluetooth
- Lashing eyes in the trunk
- Central locking with radio remote control
- Shelves
- Airbag, driver and switchable passenger airbag
- Airbag, head airbags
- Anti-lock braking system (ABS)
- Exterior mirrors electrically adjustable and heated
- Exterior mirrors, electrically folding
- Hill start assist
- Grey headliner
- Decorative inlay Dark Brushed
- tachometer
- Dynamic Light Assistant (Masked Permanent High Beam)
- Electric tailgate opening
- Electronic transverse differential lock (XDS+)
- Headlight assistant and rain sensor
- Front radar assistant including city emergency braking function
- Cruise control including speed limiter
- Tinted windows
- Rear window wiper including windscreen washer system
- Air Care Climatronic air conditioning system (2 zones)
- Trunk cover, roll-up and removable, semi-automatic
- Metal loading sill protection
- Steering wheel: 2-spoke leather steering wheel with multifunction buttons
- Matrix LED headlights
- Front center armrest with storage compartment
- Engine drag torque control (MSR)
- Multi-collision brake
- Rear parking sensors
- Radio: Bolero infotainment system
- Radio accessories: Digital radio reception DAB+
- Radio accessories: SmartLink+
- Tire pressure monitoring
- Wheels: 17" Drakon alloy wheels
- Power steering, electromechanical
- Seats: Heated front seats
- Seats: Electrically adjustable front seats, driver's seat with memory function
- Seats: Electric operation of the front passenger seat from the rear
- SKODA Care Connect
- Automatic start/stop system including brake energy recovery
- 12-V socket in the center console front and rear
- Chrome-plated elements
- Immobiliser

Extra equipment



- Convenience opening for the electric tailgate ((sensor-controlled opening))
- Package: Business Amundsen (Combi) (dynamic Amundsen radio navigation system - capacitive 8" touch display in glass design - color Maxi-Dot display - Wi-Fi hotspot (use of the data connection of the paired mobile phone) - voice control - phone box with inductive charging function (connection via external antenna) - fatigue detection - 230 V socket and USB ports, tablet holder in the rear - Sunset (rear window and rear side windows dark tinted) - Infotainment Online subscription (3 years) - luggage net partition)
- Adaptive Cruise Control ACC (control range up to 210 km/h) (replaces cruise control)
- Digital instrument cluster (Virtual Cockpit) 10.2"
- Heated windshield
- Kessy, keyless entry and start-stop system
- Paint finish: metallic
- Parking sensors front and rear
- Rear view camera with washer nozzle
- Steering wheel: Heated steering wheel (2 spokes)
- Trailer coupling, pivoting including trailer stabilization
- Variable loading floor in the trunk including organizer and aluminum cross bars

Brief expert findings

Documents submitted	At the time of the inspection, the registration certificate Part 2 (letter) was available, but the registration certificate Part 1 (certificate) was not. (Copy)
VIN comparison	The vehicle identification number (VIN) was read from the vehicle and its conformity with the submitted documents was verified during the inspection by the undersigned.
Inspection	The inspection conditions were sufficient for the assessment of the vehicle. Lifting equipment and a pit were available for examining the vehicle.
Test drive	No test drive/maneuvering was carried out during the inspection of the vehicle.
Engine function test	An engine test run was performed.

Value reducing factors

No.	Component group	Description
1	Misc.	Main inspection - No evidence - No deduction
2	Door - front right side	Door - dent(s) - Smooth repair work
3	Rear bumper	Rear bumper (Kratzer) - Deformed - Repair and paint
4	Side panel - rear left side	Side panel - Dent / paintcoat damage - Repair and paint

Wear and tear

No.	Component group	Description
1	Front bumper	Front bumper - Stone chips - No deduction
2	Bonnet	Bonnet - Stone chips - No deduction

The vehicle shows signs of wear commensurate with its age and use.

Order/Scope of order

The order was placed to prepare a sales report for the vehicle described. This includes the following:

- Description of core relevant information about the vehicle
- Documentation of equipment features
(*Delivery by third-party service providers*)
- Documentation of damage, defects, missing parts
- Documentation of previous damage, unrepaired previous damage, repainting
- a brief visual or functional inspection of the equipment details if possible.
(*Functional tests of driver assistance systems are not included in the scope of services!*)
- a photo documentation of the vehicle



Basis for the order

This product is based on the Alphabet Fuhrpark GmbH guidelines for vehicle returns and valuations. The expert makes the explicit findings in each individual case objectively within the framework of the specified standards based on his or her own expertise.

The vehicle inspection takes place in a disassembled state.

Damage or defects that can only be detected during disassembly/diagnosis work or through advanced knowledge remain within the scope of the prognosis risk. An extended risk exists for concealed defects caused by fraudulent deception and not identifiable by the expert.

Damage or defects resulting from normal use or wear and tear of the vehicle will be accepted according to the applicable standard.

There was no explicit identification or monetary consideration of the expected features within the product.

Features which in their nature and severity slightly exceed normal use but do not constitute unacceptable damage will be documented and identified under signs of use if necessary.

Damage or defects which, according to the underlying standard, can no longer be attributed to normal use or wear and tear are listed in the product under "Depreciating Factors".

Depending on the product specification, a monetary ID can be provided. If this takes place, the costs can be 100% d or pro rata depending on the vehicle's age and mileage.

Previous damages

Apparently, no repaired previous damage could be found on the vehicle.

Comments

- Winterradsatz ist kein Bestandteil des Auslieferumfangs.



Figure 1: Diagonal front (left)



Figure 2: Diagonal front (right)



Figure 3: Diagonal rear (left)



Figure 4: Diagonal rear (right)



Figure 5: Interior - front



Figure 6: Interior - rear



Figure 7: Instrument cluster



Figure 8: Instrument panel



Figure 9: Interior 360° view ([Online link](#))



Figure 10: Cargo area

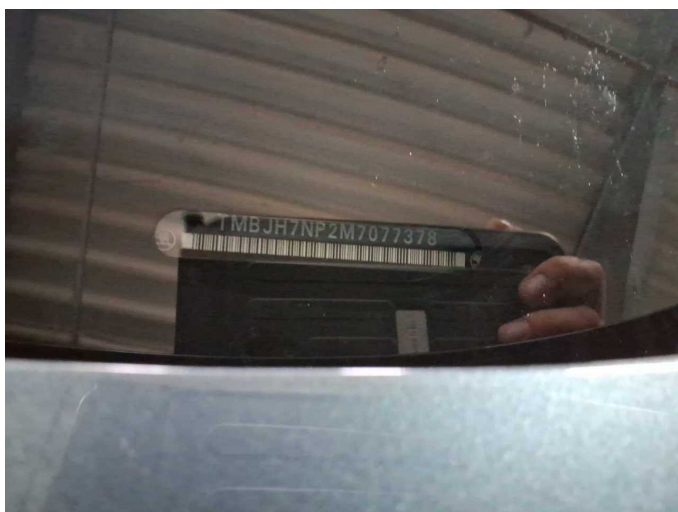


Figure 11: VIN



Figure 12: Mounted tyres



Figure 13: Documents



Figure 14: Additional tyres



Figure 15: Navigation



Figure 16: Misc.



Figure 17: Misc.



Figure 18: Misc.



Figure 19: Misc.



Figure 20: Misc.



Figure 21: Misc.



Figure 22: Misc.



Figure 23: Misc.

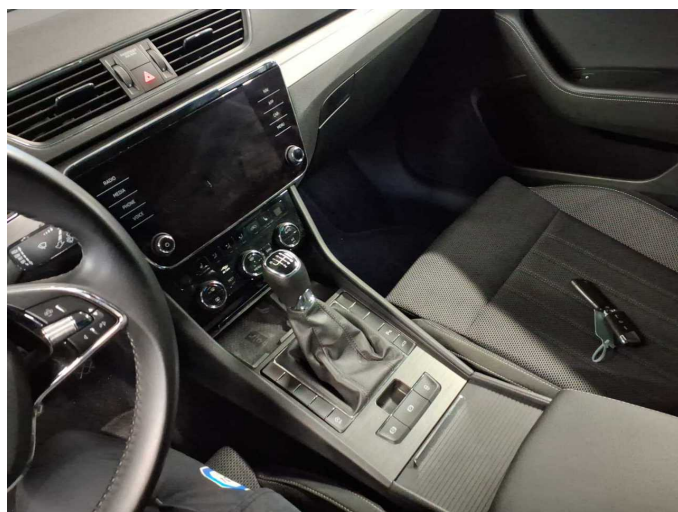


Figure 24: Misc.



Figure 25: Misc.



Figure 26: Misc.



Figure 27: Misc.

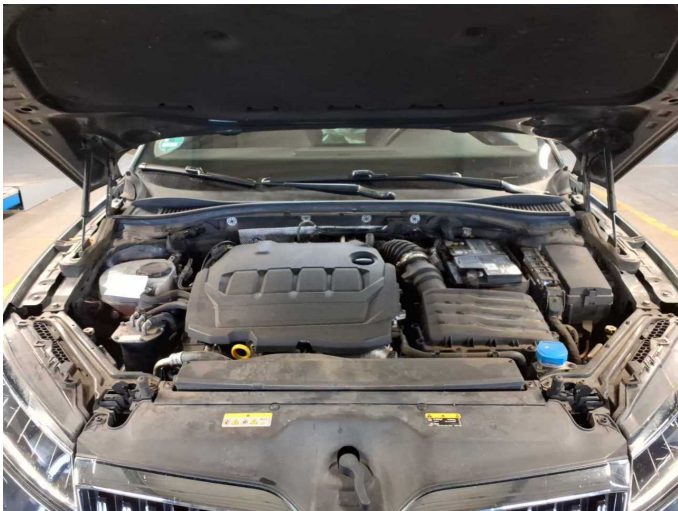


Figure 28: Misc.



Figure 29: Misc.

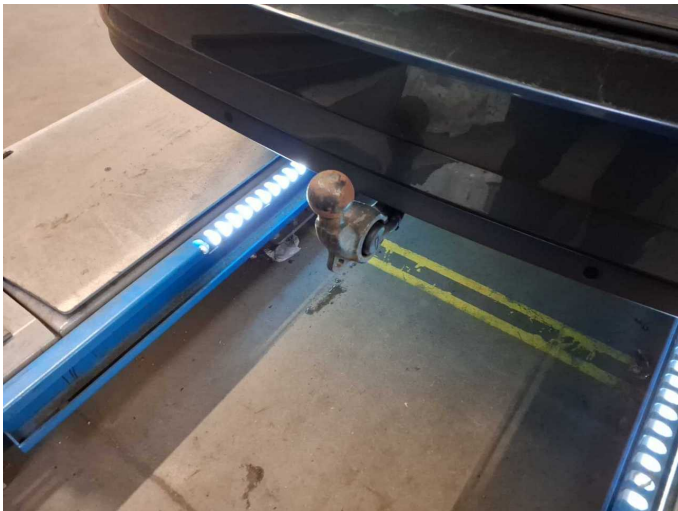


Figure 30: Misc.



Figure 31: Misc.

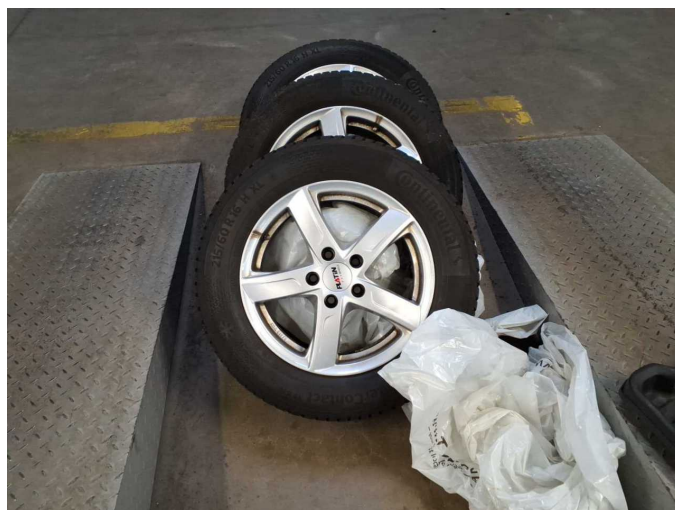


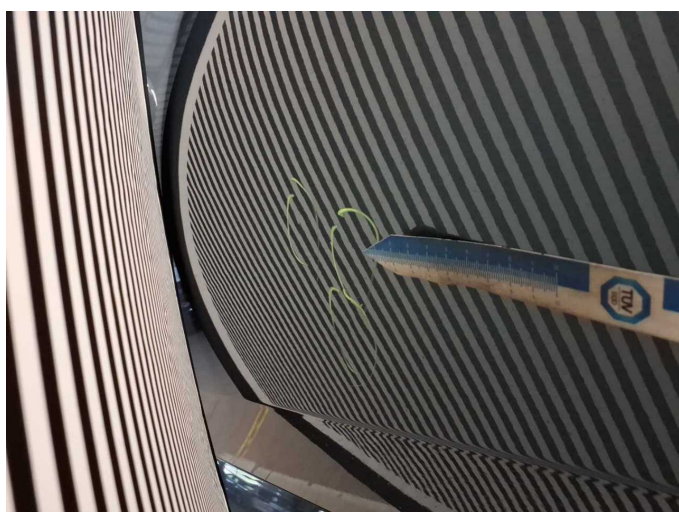
Figure 32: Misc.



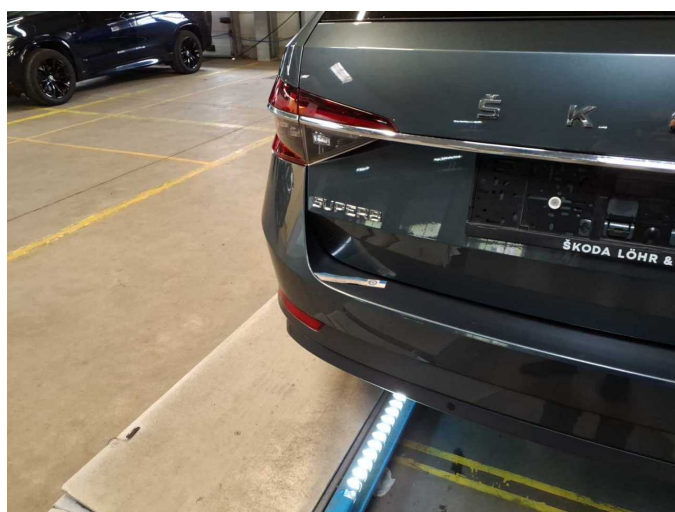
Figure 33: Misc.



Damage 2: Door - front right side: Door - dent(s) - Smooth repair work



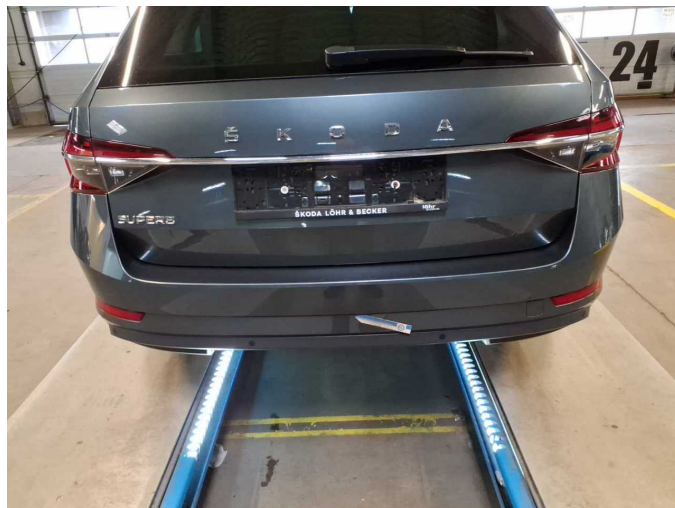
Damage 2: Door - front right side: Door - dent(s) - Smooth repair work



Damage 3: Rear bumper: Rear bumper (Kratzer) - Deformed - Repair and paint



Damage 3: Rear bumper: Rear bumper (Kratzer) - Deformed - Repair and paint



Damage 3: Rear bumper: Rear bumper (Kratzer) - Deformed - Repair and paint



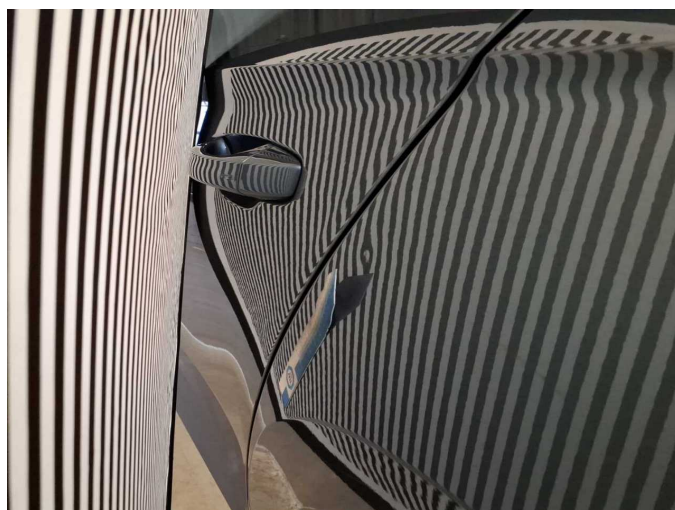
Damage 3: Rear bumper: Rear bumper (Kratzer) - Deformed - Repair and paint



Damage 4: Side panel - rear left side: Side panel - Dent / paintcoat damage - Repair and paint



Damage 4: Side panel - rear left side: Side panel - Dent / paintcoat damage - Repair and paint



Damage 4: Side panel - rear left side: Side panel - Dent / paintcoat damage - Repair and paint



Wartungshistorie

(gemäß Auftraggeber Informationen)

Fahrgestellnummer: TMBJH7NP2M7077378
Hersteller / Modell: SKODA SKODA Superb Combi 2.0 TDI Style

Datum	KM-Stand	Beschreibung
29.07.2025	194.315	Bremse Sonstiges; Bremsflüssigkeit; Bremsflüssigkeit ern; Bremsklötze hinten; Bremsklötze vorne; Bremsscheiben + Klötze h; Bremsscheiben + Klötze v; Bremsscheiben hinten; Bremsscheiben vorne; Kraftstofffilter ern; Luftfiltereinsatz ern; Motoröl b. Wartung; Ölfilter ern; Regelwartungsdienst; Systemtest/Eigendiagnose; Wartung Sonstiges
12.12.2024	163.985	Keilrippenriemen; Motoröl b. Wartung; Ölfilter ern; Regelwartungsdienst; Reparatur Sonstiges; Systemtest/Eigendiagnose; Wartung Sonstiges
12.07.2024	143.164	AU
19.04.2024	131.064	Motoröl b. Wartung; Ölfilter ern; Regelwartungsdienst; Wartung Sonstiges
25.08.2023	97.926	Bremse Sonstiges; Bremsflüssigkeit; Bremsflüssigkeit ern; Bremsklötze hinten; Bremsklötze vorne; Bremsscheiben hinten; Bremsscheiben vorne; Kraftstofffilter ern; Luftfiltereinsatz ern; Motoröl b. Wartung; Ölfilter ern; Regelwartungsdienst; Systemtest/Eigendiagnose; Wartung Sonstiges
02.01.2023	63.845	Motoröl b. Wartung; Regelwartungsdienst
30.03.2022	30.216	Motoröl b. Wartung; Regelwartungsdienst