



Expertise

Protocol number: 41402835
Order No. / Reference: 25105909
Inspection date: 3 Sept 2025

Manufacturer: Skoda	Model: Superb Combi 2.0 TDI DSG Sportline
VIN: TMBJH7NP1P7010999	



Vehicle details	
Manufacturer / Type / Model / Equipment	
Skoda Superb Combi 2.0 TDI DSG Sportline	
Vehicle Identification number	TMBJH7NP1P7010999
Mileage (Read)	91,060 km
First registration	12 Sept 2022
Number of holders	2
Power / Engine displacement	110 kw / 1,968 ccm
Fuel type / Cylinder	Diesel / 4
Gearbox / Number of gears	Automatic / 7
Type of drive	Front drive
Type of vehicle	Station wagon
Colour / colour code	Black Magic Pearlescent (F9R)
Doors / Seats	5 / 5
Upholstery type	Alcantara / cloth
Colour of upholstery	Black-Anthracite
Driving readiness	Not roadworthy / moveable



Vehicle details

Maintenance booklet / proof	digital proof / complete	Next maintenance in	6,800 km
Last maintenance on / at	08/2025 at 90,879 km		
Key is / should be	3 / 3	FZG documents	ZB#2 (B) was available (copy), ZB#1 (S) was not available
		Letter No.	GN414765
Previous damage / Accident	None detectable	Repainting	Detectable
Inspection conditions	sufficient	Lifting equipment / pit	yes
Test drive	short drive on the company premises	Engine function test	Performed
Driving readiness	Not roadworthy / moveable		
Roadworthiness	not roadworthy/operational safe		
Manufacturer key number/ type code number	8004 / APL 02048		
Emission standard	EURO6;WLTP;AP;PI/CI; M, N1 I	Fine dust sticker	
Permitted total weight	2,196 kg	Empty weight	

Tyres

Mounted tyres

#	Tyre size	Type of tyre	Manufacturer	Tread depth
1)	235/40 R19 96W	Summer tyres on Light alloy	Continental	6mm / 6mm
2)	235/40 R19 96W	Summer tyres on Light alloy	Continental	6mm / 5mm

Additional tyres

#	Tyre size	Type of tyre	Manufacturer	Tread depth
1)	215/60 R16 99H	Winter tyres on Light alloy	Bridgestone	4mm / 6mm
2)	215/60 R16 99H	Winter tyres on Light alloy	Semperit	7mm / 7mm

Replacement

Typ	Tyre size	Type of tyre	Manufacturer	Tread depth
	Tirefit	Expiration date 06/2026		

Legend: Tread depth information for tires on the left is in the first place, for tires on the right is in the second place on the axle in the direction of travel

Equipment

Standard equipment

- Storage compartments (ticket holder on the windshield, 4 roof grab handles, rear with coat hooks, coat hook on the B-pillar, holder for the high-visibility vests in the front doors, glasses compartment on the roof lining, storage compartments in the door panels (front and rear) with 1.5l bottle holder, cup holder in the front center console with easy-open bottle opening, storage pockets on the front seat backrests, storage compartments behind the wheel arches in the trunk including cargo elements, illuminated trunk)
- Exterior mirrors painted black, door handles in body color
- Illuminated glove compartment
- Hill start assist
- Black headliner
- Dark Carbon decorative inlay
- Digital Cockpit Plus 10.2"
- Third brake light
- Stainless steel pedals
- Electronic parking brake including auto-hold function
- Electronic transverse differential lock (XDS+)
- Driving light assistant and rain sensor (Easy Light Assist) (coming and leaving home function and tunnel light)
- Electric windows front and rear, including anti-pinch protection and child safety lock
- Footwell lighting front and rear
- Cruise control including speed limiter
- Transmission: 7-speed direct shift gearbox (DSG)
- Tinted windows
- Heated rear window
- Rear window wiper including windscreen washer system
- Interior mirror automatically dimming
- Kessy, keyless entry and start-stop system
- Child safety locks for the rear doors and windows, electric
- Trunk cover, roll-up and removable, semi-automatic
- Headrests integrated in front seats, rear headrests height adjustable
- Radiator grille slats, frame, side strips and window surrounds in black
- LED ambient lighting (dashboard and decorative trim with selectable color scheme, reading lamps, door handles and footwell as well as sun visors with LED lighting - projection of the SKODA logo from the bottom of the door onto the floor (front doors))
- Matrix LED headlights (dynamic high beam assistant, automatic headlight range control, headlight cleaning system, LED rear lights in crystal glass optics, animated indicators)
- Engine drag torque control (MSR)
- Multi-collision brake
- Rear parking sensors
- Radio: Bolero infotainment system (capacitive 8" touch display in glass design - Wireless Smartlink (Apple CarPlay, Android Auto))
- Airbag, driver and switchable passenger airbag
- Airbag, driver's knee airbag
- Airbag, head airbags
- Airbag, front side airbags
- Anti-lock braking system (ABS)
- Traction control (ASR)
- Dashboard in black / black, door trim in black, headliner in black
- Exterior mirrors electrically adjustable and heated
- Exterior mirrors with memory function
- Exterior mirrors, electrically folding (with boarding spots - automatically dimming on the driver's side)
- Hydraulic brake assist (HBA)
- Roof rails, painted black glossy
- Diesel particulate filter and SCR catalyst
- tachometer
- Dynamic Light Assistant (Masked Permanent High Beam)
- Electric tailgate opening (with multifunctional storage under the trunk cover)
- Electronic Stabilization Control (ESC)
- Chassis: Adaptive chassis DCC (10 mm lowering, adjustable damper settings) (including driving profile selection (Normal, Comfort, Eco, Sport, Individual))
- Front radar assist including City Emergency Braking (The front radar assist warns of impending collisions and initiates braking to mitigate the impact of an unavoidable impact. The front radar assist continuously monitors the distance to the traffic ahead using a radar sensor integrated into the radiator grille.)
- Rear spoiler
- ISOFIX preparation on the outer rear seats, including top tether
- Air Care Climatronic air conditioning system (2-zone) (fully automatic, separately adjustable for driver and front passenger including odor and allergen filter and climate-controlled glove compartment)
- Metal loading sill protection
- LED reading lights at the front and rear of the roof lining
- LED taillights in crystal glass look and animated indicators
- Remote release of the rear seat backrests in the trunk
- Steering wheel: Heated steering wheel in sports design with multifunction buttons including shift paddles
- Steering wheel: Height and length adjustable leather steering wheel
- Rear center armrest with cup holders and through-loading option
- Front center armrest with storage compartment
- Multifunctional storage under the trunk cover
- LED fog lights with integrated cornering light
- Upholstery: Alcantara trim in Sport Black
- Radio accessories: Digital radio reception DAB+



- Radio accessories: Wireless SmartLink (Apple CarPlay, Android Auto)
- Tire pressure monitoring
- Wheels: 19" Vega alloy wheels, high-sheen/anthracite (8J x 19" ET 44 with 235/40 R19 tires)
- Power steering, electromechanical
- Seats: Heated front seats
- Seats: Adjustable lumbar supports in the front seats
- Seats: Electrically adjustable front seats with memory function
- Seats: Front sports seats
- Sun visor on driver and passenger side with illuminated make-up mirror
- Automatic start/stop system including brake energy recovery
- 12-V socket in the trunk
- 12-V socket in the center console front and rear
- Sunset (rear window and rear side windows dark tinted)
- Phone: Bluetooth hands-free system
- Textile floor mats
- Chrome-plated elements (air vents, light switches, music or navigation systems, air conditioning)
- Immobiliser

- Radio accessories: voice control
- Radio accessories: USB ports in the front (Type-C) and USB charging port (Type-A) in the center armrest
- Umbrella compartments in the front side doors
- Tire mobility kit (tire repair spray including compressor)
- Leather gearshift and handbrake levers
- Heated windscreen washer nozzles
- Superb seat belts (height-adjustable three-point seat belts in the front, with belt tensioners - three three-point seat belts in the rear - seat belt warning lights for all seats)
- Seats: Height-adjustable front seats
- Seats: Rear seat backrest 60:40 split folding
- SKODA Care Connect (SOS emergency call function (Emergency Call including automatic activation in the event of an accident with airbag deployment), mobility service (connection option for rapid assistance in the event of a breakdown), information service (connection option to the hotline for all questions about vehicle functions), free remote vehicle access for 1 year (Remote Access) with access to vehicle data and functions via smartphone, e.g., parking position, activating hazard lights, current fuel level)
- Door sill plates
- Glazing: Acoustic glazing in the front side windows
- Lashing eyes in the trunk
- Central locking with radio remote control

Extra equipment

- Trailer coupling, pivoting including trailer stabilization
- Package: Transport (Combi) (trunk net - variable loading floor - luggage net partition)
- Finish: pearl effect

Brief expert findings

Documents submitted	At the time of the inspection, the registration certificate Part 2 (letter) was available, but the registration certificate Part 1 (certificate) was not. (Copy)
VIN comparison	The vehicle identification number (VIN) was read from the vehicle and its conformity with the submitted documents was verified during the inspection by the undersigned.
Inspection	The inspection conditions were sufficient for the assessment of the vehicle. Lifting equipment and a pit were available for examining the vehicle.
Test drive	A short maneuvering and shunting trip was carried out on the company premises.
Engine function test	An engine test run was performed.
Driving readiness	At the time of inspection, the vehicle was not drivable under its own power, but can be moved on its own axle with the aid of auxiliary equipment.
Roadworthy/operational safe	At the time of the inspection, the vehicle was not operational or roadworthy due to the damage characteristic listed under accident or value-reducing factors.

Value reducing factors

No.	Component group	Description
1	Equipment	Vehicle key with remote control (Batterie) - Due - Replace
2	Boot lid / rear door	Boot lid - Glued / labelled - Remove
3	Vehicle glazing	Windscreen - Stone chips - Smart repair



No.	Component group	Description
4	Rear bumper	Rear bumper - Scratch(es) - Smart repair
5	Door - front left side	Door - Scratch(es) - Smart repair
6	Wheel / tyres	Tyre - front right side - Damaged - Replace
7	Front bumper	Front bumper (+ Steinschläge) - Scratched - Repair and paint
8	Door - rear right side	Door - Scratch(es) - Paint
9	Wheel / tyres	Alloy rim - rear right side - Scratched - Replace
10	Wheel / tyres	Alloy rim - front right side - Scratched - Replace
11	Bonnet	Bonnet - Dent / paintcoat damage - Repair and paint

Wear and tear

No.	Component group	Description
1	Side panel - rear right side	Sill - Scratch(es) - Cover / polish
2	Sill - left side	Sill - Scratch(es) - No deduction
3	Roof	Roof - Stone chips - No deduction
4	Headlight	Headlight - right side - Stone chips - No deduction
5	Headlight	Headlight - left side - Stone chips - No deduction

The vehicle shows signs of wear commensurate with its age and use.

Repainting

No. Repainting

- Side panel - rear left side, Professionally carried out, Invoice of repair done Non-existent
- Door - rear left side, Professionally carried out, Invoice of repair done Non-existent

Paint coat thickness measurement

Side panel - rear left side	794 µm	Door - rear left side	320 µm
-----------------------------	--------	-----------------------	--------

Order/Scope of order

The order was placed to prepare a sales report for the vehicle described. This includes the following:

- Description of core relevant information about the vehicle
- Documentation of equipment features
(Delivery by third-party service providers)
- Documentation of damage, defects, missing parts
- Documentation of previous damage, unrepaired previous damage, repainting
- a brief visual or functional inspection of the equipment details if possible.
(Functional tests of driver assistance systems are not included in the scope of services!)
- a photo documentation of the vehicle



Basis for the order

This product is based on the Alphabet Fuhrpark GmbH guidelines for vehicle returns and valuations. The expert makes the explicit findings in each individual case objectively within the framework of the specified standards based on his or her own expertise.

The vehicle inspection takes place in a disassembled state.

Damage or defects that can only be detected during disassembly/diagnosis work or through advanced knowledge remain within the scope of the prognosis risk. An extended risk exists for concealed defects caused by fraudulent deception and not identifiable by the expert.

Damage or defects resulting from normal use or wear and tear of the vehicle will be accepted according to the applicable standard.

There was no explicit identification or monetary consideration of the expected features within the product.

Features which in their nature and severity slightly exceed normal use but do not constitute unacceptable damage will be documented and identified under signs of use if necessary.

Damage or defects which, according to the underlying standard, can no longer be attributed to normal use or wear and tear are listed in the product under "Depreciating Factors".

Depending on the product specification, a monetary ID can be provided. If this takes place, the costs can be 100% d or pro rata depending on the vehicle's age and mileage.

Previous damages

Apparently, no repaired previous damage could be found on the vehicle.

Comments

- Winterradsatz ist kein Bestandteil des Auslieferumfangs.



Figure 1: Diagonal front (left)



Figure 2: Diagonal front (right)



Figure 3: Diagonal rear (left)



Figure 4: Diagonal rear (right)



Figure 5: Interior - front



Figure 6: Interior - rear



Figure 7: Instrument cluster



Figure 8: Instrument panel



Figure 9: Interior 360° view



Figure 10: Cargo area

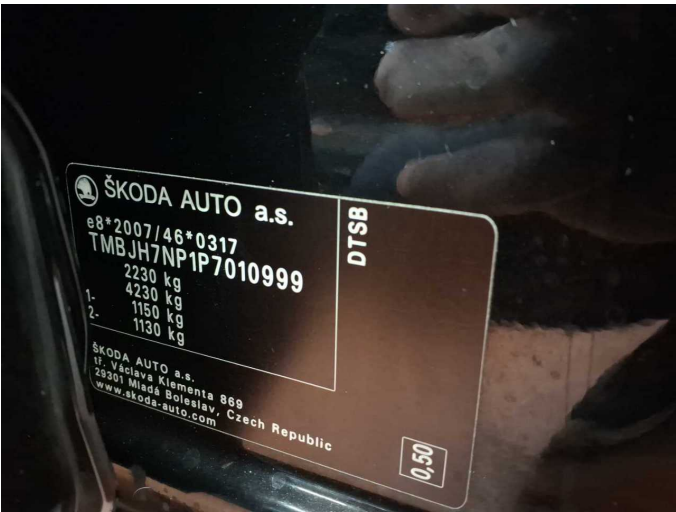


Figure 11: VIN



Figure 12: Mounted tyres

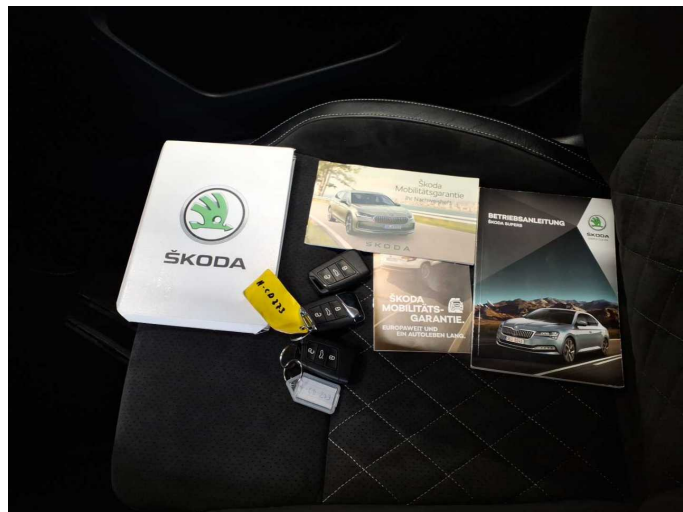


Figure 13: Documents



Figure 14: Documents



Figure 15: Documents



Figure 16: Additional tyres



Figure 17: Navigation



Figure 18: Misc.



Figure 19: Misc.



Figure 20: Misc.



Figure 21: Misc.



Figure 22: Misc.

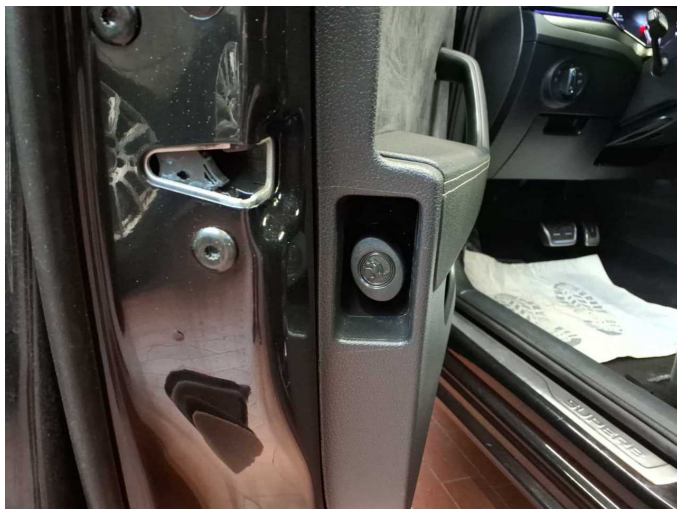


Figure 23: Misc.



Figure 24: Misc.



Figure 25: Misc.



Figure 26: Misc.

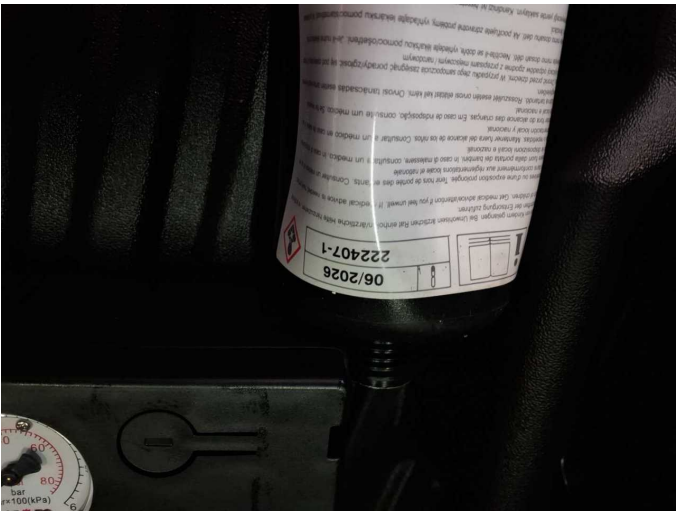


Figure 27: Misc.



Figure 28: Misc.



Figure 29: Misc.



Figure 30: Misc.

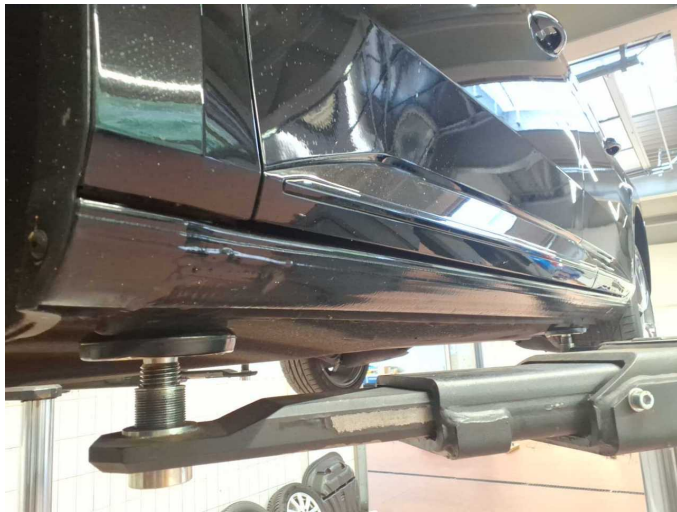


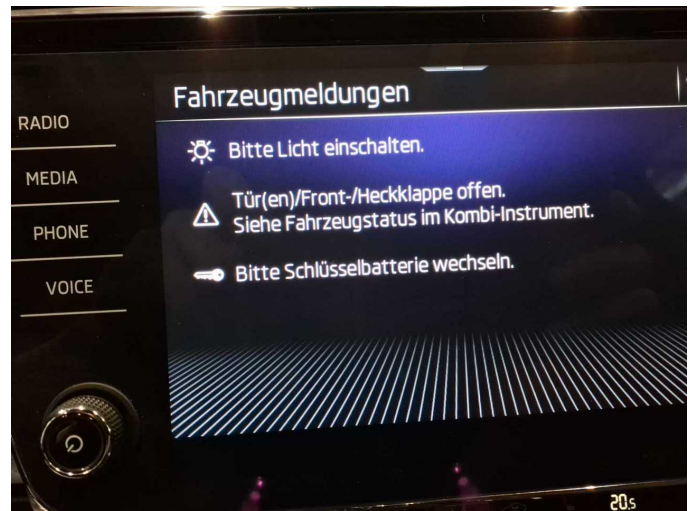
Figure 31: Misc.



Figure 32: Misc.



Figure 33: Misc.



Damage 1: Equipment: Vehicle key with remote control (Batterie) - Due - Replace



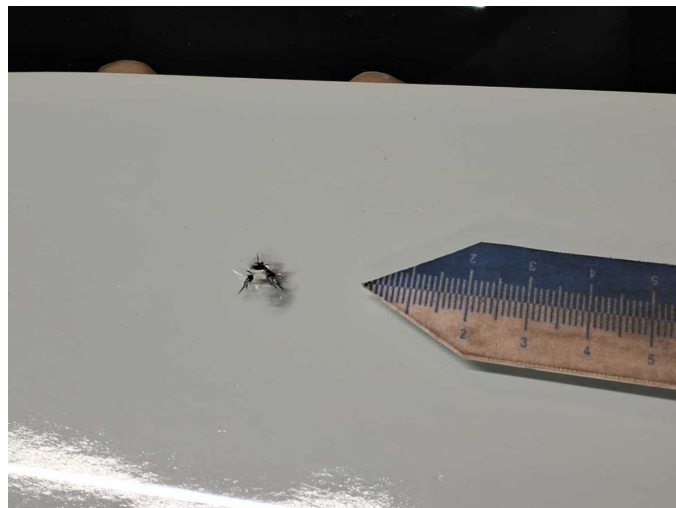
Damage 2: Boot lid / rear door: Boot lid - Glued / labelled - Remove



Damage 2: Boot lid / rear door: Boot lid - Glued / labelled - Remove



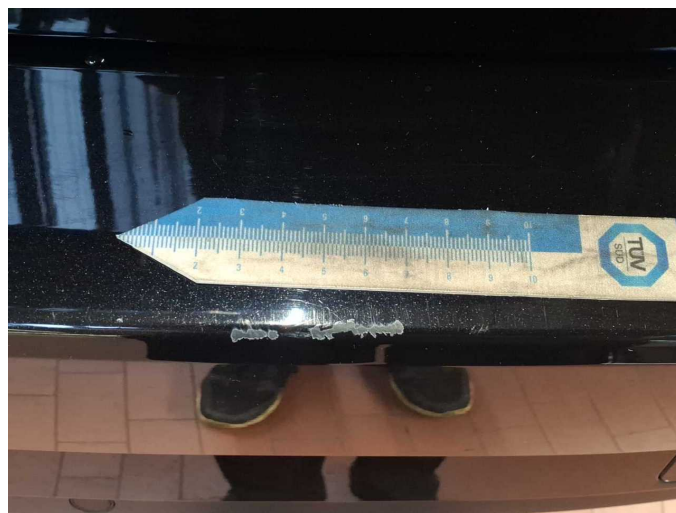
Damage 3: Vehicle glazing: Windscreen - Stone chips - Smart repair



Damage 3: Vehicle glazing: Windscreen - Stone chips - Smart repair



Damage 4: Rear bumper: Rear bumper - Scratch(es) - Smart repair



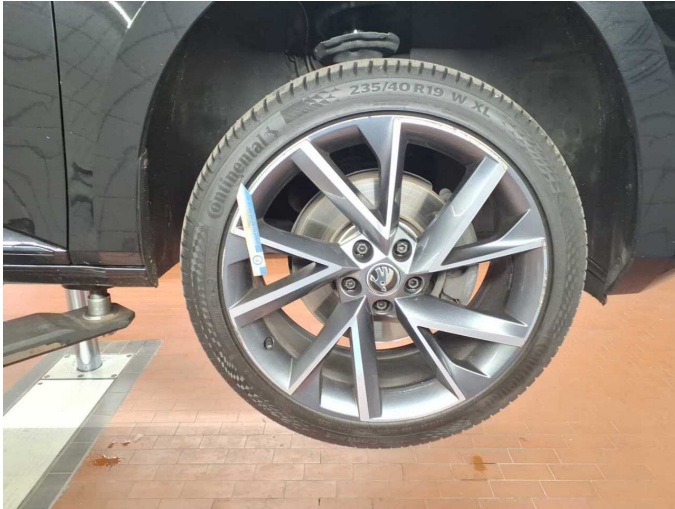
Damage 4: Rear bumper: Rear bumper - Scratch(es) - Smart repair



Damage 5: Door - front left side: Door - Scratch(es) - Smart repair



Damage 5: Door - front left side: Door - Scratch(es) - Smart repair



Damage 6: Wheel / tyres: Tyre - front right side - Damaged - Replace



Damage 6: Wheel / tyres: Tyre - front right side - Damaged - Replace



Damage 6: Wheel / tyres: Tyre - front right side - Damaged - Replace



Damage 7: Front bumper: Front bumper (+ Steinschläge) - Scratched - Repair and paint



Damage 7: Front bumper: Front bumper (+ Steinschläge) - Scratched - Repair and paint



Damage 7: Front bumper: Front bumper (+ Steinschläge) - Scratched - Repair and paint



Damage 7: Front bumper: Front bumper (+ Steinschläge) - Scratched - Repair and paint



Damage 8: Door - rear right side: Door - Scratch(es) - Paint



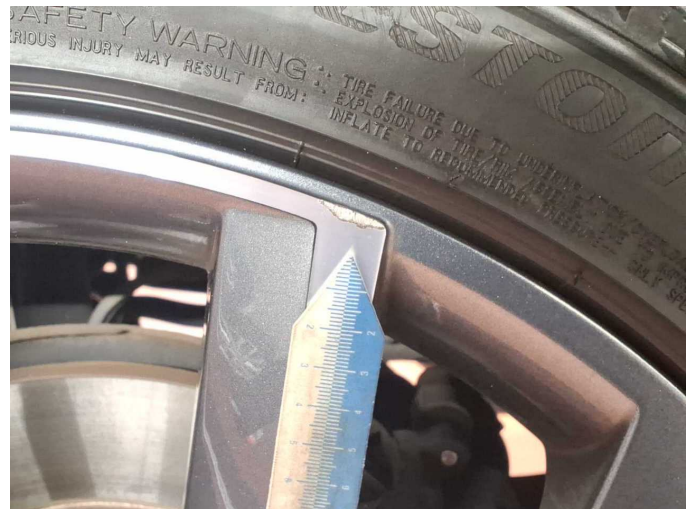
Damage 8: Door - rear right side: Door - Scratch(es) - Paint



Damage 8: Door - rear right side: Door - Scratch(es) - Paint



Damage 9: Wheel / tyres: Alloy rim - rear right side - Scratched - Replace



Damage 9: Wheel / tyres: Alloy rim - rear right side - Scratched - Replace



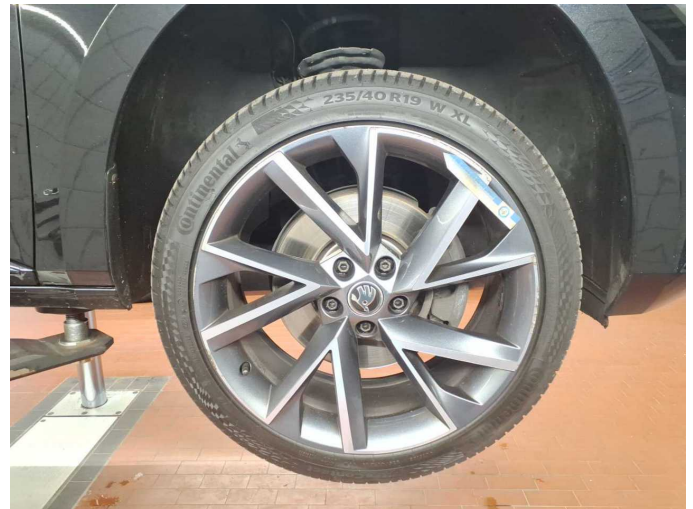
Damage 9: Wheel / tyres: Alloy rim - rear right side - Scratched - Replace



Damage 9: Wheel / tyres: Alloy rim - rear right side - Scratched - Replace



Damage 9: Wheel / tyres: Alloy rim - rear right side - Scratched - Replace



Damage 10: Wheel / tyres: Alloy rim - front right side - Scratched - Replace



Damage 10: Wheel / tyres: Alloy rim - front right side - Scratched - Replace



Damage 10: Wheel / tyres: Alloy rim - front right side - Scratched - Replace



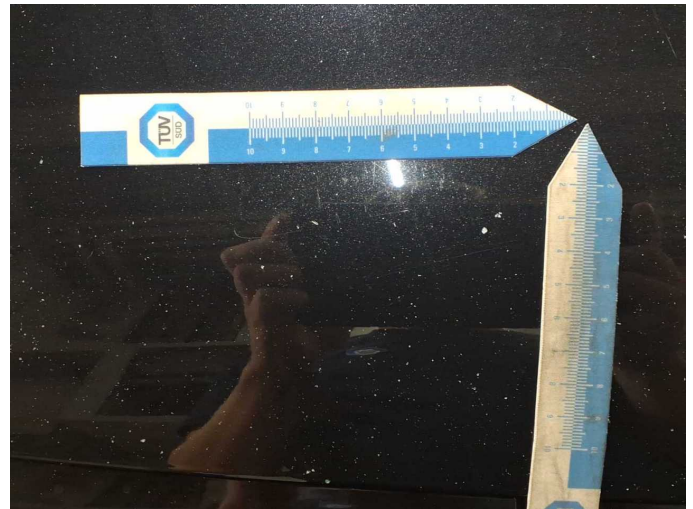
Damage 10: Wheel / tyres: Alloy rim - front right side - Scratched - Replace



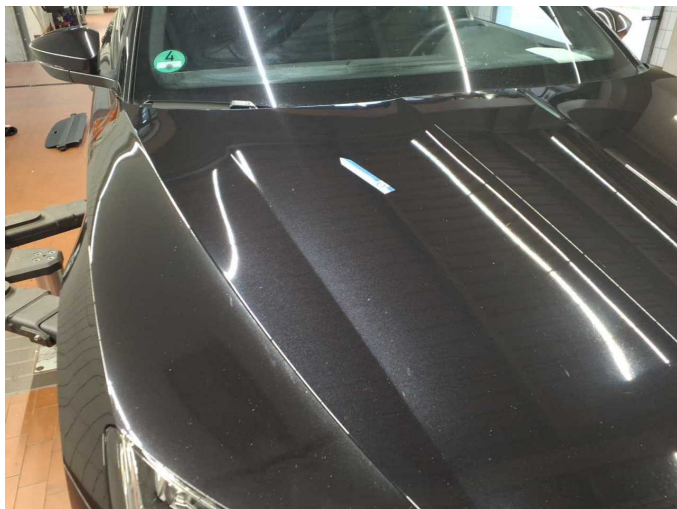
Damage 10: Wheel / tyres: Alloy rim - front right side - Scratched - Replace



Damage 11: Bonnet: Bonnet - Dent / paintcoat damage - Repair and paint



Damage 11: Bonnet: Bonnet - Dent / paintcoat damage - Repair and paint



Damage 11: Bonnet: Bonnet - Dent / paintcoat damage - Repair and paint



Damage 11: Bonnet: Bonnet - Dent / paintcoat damage - Repair and paint



Damage 11: Bonnet: Bonnet - Dent / paintcoat damage - Repair and paint



Repainting 1: Side panel - rear left side



Repainting 2: Door - rear left side



Wartungshistorie

(gemäß Auftraggeber Informationen)

Fahrgestellnummer: TMBJH7NP1P7010999

Hersteller / Modell: SKODA SKODA Superb Combi 2.0 TDI DSG Sportline

Datum	KM-Stand	Beschreibung
12.08.2025	90.879	Kraftstofffilter ern; Luftfiltereinsatz ern; Regelwartungsdienst; Systemtest/ Eigendiagnose; Wartung Sonstiges
07.05.2025	70.968	Motoröl b. Wartung; Ölfilter ern; Ölwechsel; Wartung Sonstiges
16.01.2025	59.930	Bremse Sonstiges; Bremsklötze hinten; Bremsklötze vorne; Bremsscheiben hinten; Bremsscheiben vorne; Regelwartungsdienst; Wartung Sonstiges
09.10.2024	48.225	Motoröl b. Wartung; Ölfilter ern; Ölwechsel; Wartung Sonstiges
14.06.2024	29.475	Bremsflüssigkeit; Bremsflüssigkeit ern; Regelwartungsdienst; Wartung Sonstiges
04.04.2024	22.277	Motoröl b. Wartung; Ölfilter ern; Ölwechsel; Wartung Sonstiges