



Expertise

Protocol number: 41001144
Order No. / Reference: 24998325
Inspection date: 5 Aug 2025

Manufacturer: Skoda	Model: Superb Combi 2.0 TDI DSG Ambition
VIN: TMBJH7NP0N7021103	



Vehicle details	
Manufacturer / Type / Model / Equipment	
Skoda Superb Combi 2.0 TDI DSG Ambition	
Vehicle Identification number	TMBJH7NP0N7021103
Mileage (Read)	101,447 km
First registration	11 Jan 2022
Number of holders	1
Next periodical technical inspection	05/2027
(Report on hand)	
Power / Engine displacement	110 kw / 1,968 ccm
Fuel type / Cylinder	Diesel / 4
Gearbox / Number of gears	Automatic / 7
Type of drive	Front drive
Type of vehicle	Station wagon
Colour / colour code	Lava-Blau Metallic (W5Q)
Doors / Seats	5 / 5
Upholstery type	Cloth / leather combination
Colour of upholstery	Black-Anthracite
Vehicle with smoke odor	no



Vehicle details

Maintenance booklet / proof	digital proof / complete	Next maintenance in	21,100 km
Last maintenance on / at	05/2025 at 96,039 km		
Key is / should be	2 / 2	FZG documents	ZB#2 (B) was available (copy), ZB#1 (S) was not available
		Letter No.	GG207793
Previous damage / Accident	None detectable	Repainting	None detectable
Inspection conditions	Sufficient	Lifting equipment / pit	yes
Test drive	Short drive on the company premises	Engine function test	Performed
Manufacturer key number/ type code number	8004 / APL 01345		
Emission standard	EURO6;WLTP;AP;PI/CI; M, N1 I	Fine dust sticker	
Permitted total weight	2,196 kg	Empty weight	

Tyres

Mounted tyres

#	Tyre size	Type of tyre	Manufacturer	Tread depth
1)	215/60 R16 95V	Summer tyres on Light alloy	Continental	4mm / 4mm
2)	215/60 R16 95V	Summer tyres on Light alloy	Continental	4mm / 4mm

Additional tyres

#	Tyre size	Type of tyre	Manufacturer	Tread depth
1)	215/60 R16 99H	Winter tyres on Light alloy	Continental	6mm / 6mm
2)	215/60 R16 99H	Winter tyres on Light alloy	Goodyear	6mm / 6mm

Replacement

Typ	Tyre size	Type of tyre	Manufacturer	Tread depth
	Tirefit	Expiration date 10/2025		

Legend: Tread depth information for tires on the left is in the first place, for tires on the right is in the second place on the axle in the direction of travel



Equipment

Standard equipment

- Storage compartments closed, behind the wheel arches in the trunk including cargo elements
- Airbag, driver and switchable passenger airbag
- Airbag, driver's knee airbag
- Airbag, head airbags
- Airbag, front side airbags
- Anti-lock braking system (ABS)
- Traction control (ASR)
- Exterior mirrors electrically adjustable and heated
- Exterior mirrors and door handles in body color
- Exterior mirrors, electrically folding (with boarding spots - interior & exterior mirrors with automatic dimming)
- Hydraulic brake assist (HBA)
- Roof rails, black
- Diesel particulate filter and SCR catalyst
- Third brake light
- Electronic parking brake including auto-hold function
- Electronic Stabilization Control (ESC)
- Electric windows front and rear, including anti-pinch protection and child safety lock
- Cruise control including speed limiter
- Transmission: 7-speed direct shift gearbox (DSG)
- Tinted windows
- Heated rear window
- Rear window wiper including windscreen washer system
- ISOFIX preparation on the outer rear seats, including top tether
- LED low beam
- Steering wheel: 2-spoke leather steering wheel with multifunction buttons (including leather gearshift and handbrake levers)
- Front center armrest with storage compartment
- Engine drag torque control (MSR)
- Multi-collision brake
- Rear parking sensors
- Radio: Bolero infotainment system (capacitive multi-touch display 8.0" (800x480) - 8 speakers - wireless Smartlink for Apple Car Play)
- Radio accessories: SmartLink+ (Apple CarPlay - Android Auto - MirrorLink - SmartGate)
- Tire mobility kit (tire repair spray including compressor)
- Heated windscreen washer nozzles
- Power steering, electromechanical
- Seats: Adjustable lumbar supports in the front seats
- Seats: Height-adjustable front seats
- Seats: Rear seat backrest 60:40 split folding
- Sun visor on driver and passenger side with illuminated make-up mirror
- Automatic start/stop system including brake energy recovery
- Storage compartments (ticket holder on the windshield, 4 roof grab handles, rear with coat hooks, coat hook on the B-pillar, holder for the high-visibility vests in the front doors, glasses compartment on the roof lining, storage compartments in the door panels (front and rear) with 1.5l bottle holder, cup holder in the front center console with easy-open bottle opening, storage pockets on the front seat backrests, storage compartments behind the wheel arches in the trunk including cargo elements, illuminated trunk)
- Illuminated glove compartment
- Hill start assist
- Grey headliner
- Decorative inlay silver brushed
- tachometer
- Easy Start (start-stop button instead of ignition lock)
- Electronic transverse differential lock (XDS+)
- Driving light assistant and rain sensor (tunnel light, coming and leaving home function)
- Front radar assist including City Emergency Braking (The front radar assist warns of impending collisions and initiates braking to mitigate the impact of an unavoidable impact. The front radar assist continuously monitors the distance to the traffic ahead using a radar sensor integrated into the radiator grille.)
- Trunk cover, roll-up and removable, semi-automatic
- Headrests height adjustable front and rear
- LED rear lights
- Steering wheel: height and length adjustable
- Reading lights at the front and rear of the roof lining
- Rear center armrest with cup holders and through-loading option
- Multifunction display in the instrument cluster
- LED fog lights with integrated cornering light
- Upholstery: Cloth
- Radio accessories: 2 USB-A ports in the center console
- Radio accessories: Digital radio reception DAB+
- Radio accessories: In Car Communication
- Radio accessories: Wireless SmartLink for Apple Car Play
- Tire pressure monitoring
- Wheels: 16" Orion alloy wheels (6.5J x 16" ET 41 with 215/60 R16 tires)
- Superb seat belts (height-adjustable three-point seat belts in the front, with belt tensioners - three three-point seat belts in the rear - seat belt warning lights for all seats)



- 12-V socket in the trunk
- 12-V socket in the center console front and rear
- Telephone: Comfort hands-free Bluetooth telephone system (without connection to the external antenna)
- Chrome-plated elements (air vents, light switches, music or navigation systems, air conditioning)
- Central locking with radio remote control

- SKODA Care Connect (SOS emergency call function (Emergency Call including automatic activation in the event of an accident with airbag deployment), mobility service (connection option for rapid assistance in the event of a breakdown), information service (connection option to the hotline for all questions about vehicle functions), free remote vehicle access for 1 year (Remote Access) with access to vehicle data and functions via smartphone, e.g., parking position, activating hazard lights, current fuel level)
- Lashing eyes in the trunk
- Immobiliser

Extra equipment

- Adaptive Cruise Control ACC (control range up to 210 km/h) (replaces cruise control)
- Climatronic air conditioning (3-zone) (fully automatic, separately adjustable for driver, front passenger and rear)
- Package: Business Columbus (Ambition, Combi) (dynamic radio navigation system Columbus, capacitive 9.2" touch display, color Maxi-Dot display, Wi-Fi hotspot, voice control, phone box with inductive charging function (connected via external antenna), fatigue detection, 230 V socket, USB ports, tablet holder in the rear, Sunset (rear window and rear side windows dark tinted), Infotainment Online 3 years, network program in the trunk, luggage net partition, electric tailgate operation, multifunctional storage under the trunk cover)
- Partition grille Skoda Superb Combi (dealer)

- Digital instrument cluster (Virtual Cockpit) 10.2"
- Kessy, keyless entry and start-stop system
- Paint finish: metallic
- Steering wheel: Heated steering wheel (2 spokes) (with shift paddles)
- Parking sensors front and rear
- Upholstery: Microfiber leather interior (Electrically adjustable front seats with memory function - Footwell lighting front and rear)
- Seats: Heated front seats
- Lane keeping (Lane Assist), lane change (Blind-Spot Detection), rear parking, emergency and traffic jam assistant (Lane Keeping Assist with adaptive lane guidance)
- Traffic sign recognition for navigation systems

Brief expert findings

Documents submitted	At the time of the inspection, the registration certificate Part 2 (letter) was available, but the registration certificate Part 1 (certificate) was not. (Copy)
VIN comparison	The vehicle identification number (VIN) was read and the undersigned verified that it matched the documents submitted during the inspection.
Inspection	The inspection conditions were sufficient for the assessment of the vehicle. Lifting equipment and a pit were available for examining the vehicle.
Test drive	A short maneuvering and shunting trip was carried out on the company premises.
Engine function test	An engine test run was performed.

Value reducing factors

No.	Component group	Description
1	Door - front right side	Brightware - lower - Scratch(es) - Smart repair
2	Interior	Cargo area floor - Soiled - Clean
3	Door - front left side	Brightware - lower - Scratch(es) - Smart repair
4	Electronic systems	Lane-keeping assistant - Electrical fault - Perform diagnosis
5	Door - front left side	Door - dent(s) - Smart repair
6	Side panel - rear right side	Sill - Scratch(es) - Smart repair
7	Door - rear left side	Door - Scratch(es) - Smart repair
8	Front bumper	Front bumper (unterhalb) - Scratched - Smart repair
9	Side panel - rear left side	Sill - Dent / paintcoat damage - Smart repair
10	Rear bumper	Spoiler - Scratched - Replace



No.	Component group	Description
11	Side panel - rear right side	Side panel - Dent / paintcoat damage - Repair and paint
12	Rear bumper	Rear bumper - Scratched - Paint
13	Side panel - rear left side	Side panel - Dent / paintcoat damage - Repair and paint
14	Door - rear right side	Door - Dent / paintcoat damage - Paint
15	Vehicle glazing	Windscreen - Stone chips - Replace

Wear and tear

No.	Component group	Description
1	Interior	Interior - Soiled - No deduction
2	Bonnet	Bonnet - Stone chips - No deduction
3	Mudguard - right side	Mudguard - right side - Scratch(es) - No deduction
4	Body	Body - Scratch(es) - No deduction
5	Roof	Roof - Stone chips - No deduction
6	Mudguard - left side	Mudguard - left side - Scratch(es) - No deduction
7	Tail light	Tail lamp - left side - Scratch(es) - No deduction

The vehicle shows signs of wear commensurate with its age and use.

Order/Scope of order

The order was placed to prepare a sales report for the vehicle described. This includes the following:

- Description of core relevant information about the vehicle
- Documentation of equipment features
(*Delivery by third-party service providers*)
- Documentation of damage, defects, missing parts
- Documentation of previous damage, unrepaired previous damage, repainting
- a brief visual or functional inspection of the equipment details if possible.
(*Functional tests of driver assistance systems are not included in the scope of services!*)
- a photo documentation of the vehicle

Basis for the order

This product is based on the Alphabet Fuhrpark GmbH guidelines for vehicle returns and valuations. The expert makes the explicit findings in each individual case objectively within the framework of the specified standards based on his or her own expertise.

The vehicle inspection takes place in a disassembled state.

Damage or defects that can only be detected during disassembly/diagnosis work or through advanced knowledge remain within the scope of the prognosis risk. An extended risk exists for concealed defects caused by fraudulent deception and not identifiable by the expert.

Damage or defects resulting from normal use or wear and tear of the vehicle will be accepted according to the applicable standard.

There was no explicit identification or monetary consideration of the expected features within the product.

Features which in their nature and severity slightly exceed normal use but do not constitute unacceptable damage will be documented and identified under signs of use if necessary.

Damage or defects which, according to the underlying standard, can no longer be attributed to normal use or wear and tear are listed in the product under "Depreciating Factors".

Depending on the product specification, a monetary ID can be provided. If this takes place, the costs can be 100% d or pro rata depending on the vehicle's age and mileage.



Previous damages

Apparently, no repaired previous damage could be found on the vehicle.

Comments

- Winterradsatz ist kein Bestandteil des Auslieferungsumfangs.

ALPHABET



Figure 1: Diagonal front (left)

ALPHABET



Figure 2: Diagonal front (right)

ALPHABET



Figure 3: Diagonal rear (left)

ALPHABET



Figure 4: Diagonal rear (right)



Figure 5: Interior - front



Figure 6: Interior - rear



Figure 7: Instrument cluster



Figure 8: Instrument panel



Figure 9: interior 360° view



Figure 10: Cargo area



Figure 11: VIN



Figure 12: Mounted tyres



Figure 13: Documents



Figure 14: Documents

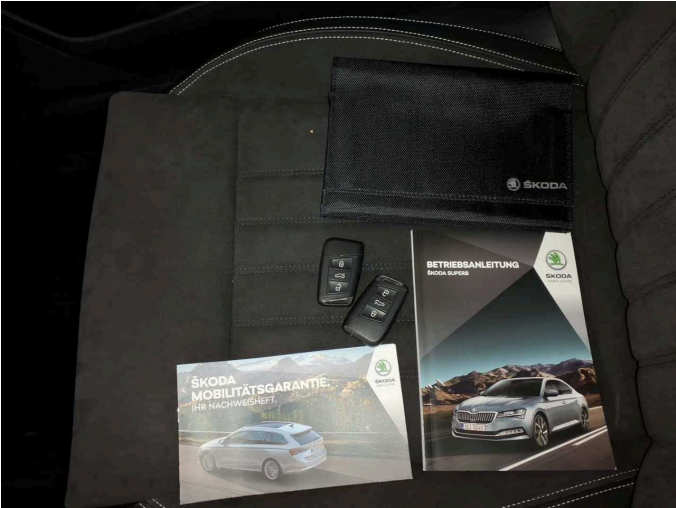


Figure 15: Documents



Figure 16: Documents



Figure 17: Additional tyres



Figure 18: Navigation



Figure 19: Misc.



Figure 20: Misc.



Figure 21: Misc.



Figure 22: Misc.



Figure 23: Misc.



Figure 24: Misc.



Figure 25: Misc.



Figure 26: Misc.



Figure 27: Misc.



Figure 28: Misc.



Figure 29: Misc.

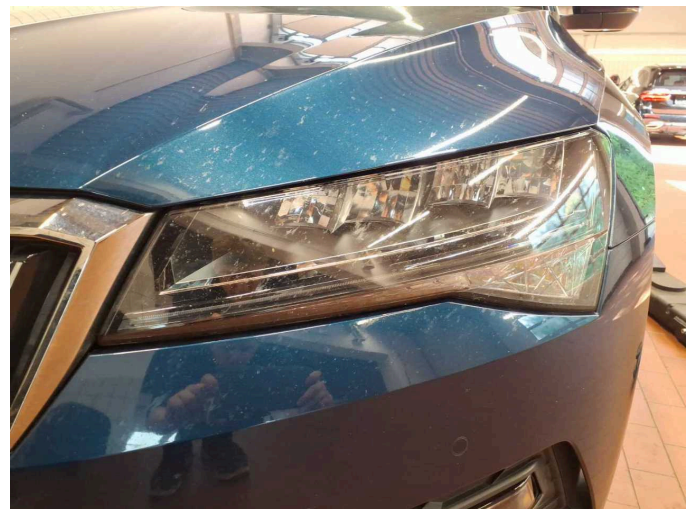


Figure 30: Misc.



Figure 31: Misc.



Figure 32: Misc.

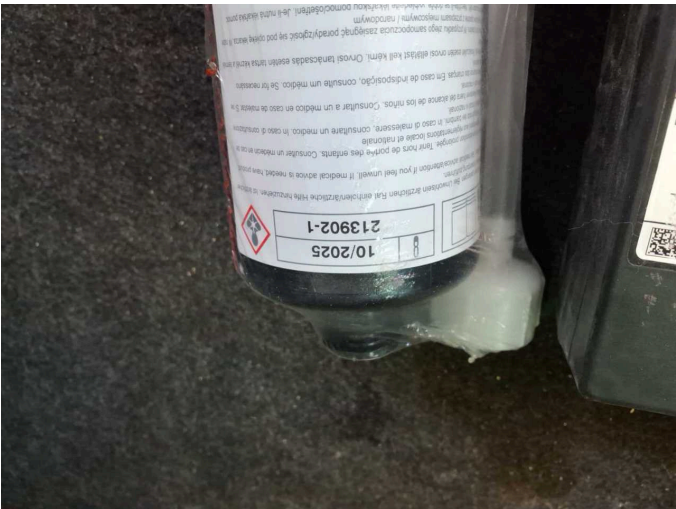
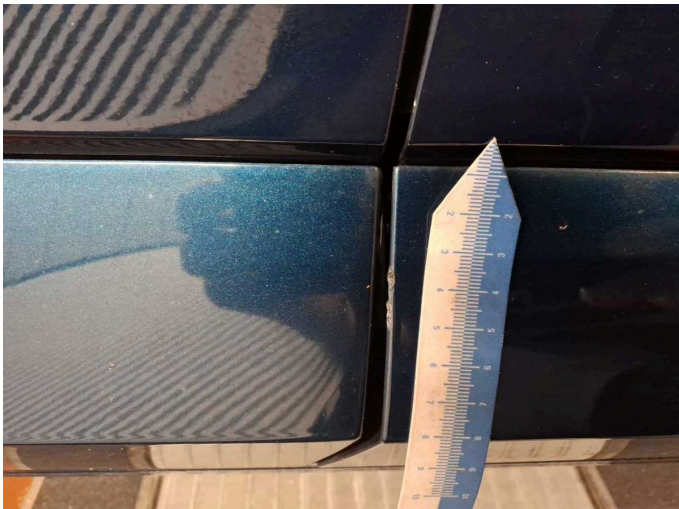
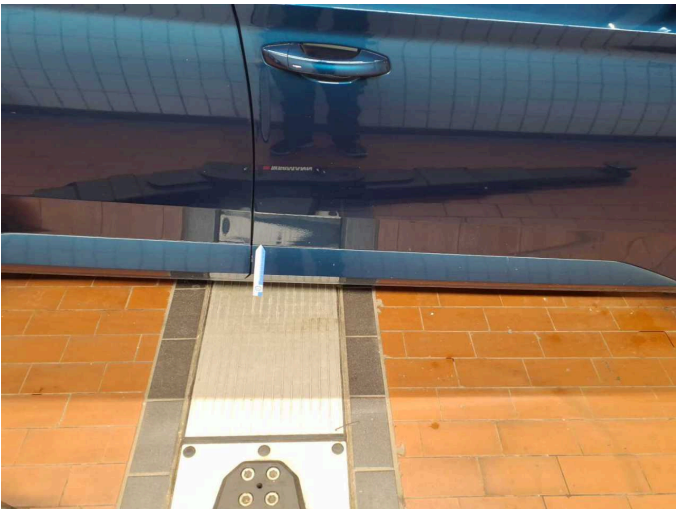


Figure 33: Misc.



Damage 1: Door - front right side: Brightware - lower - Scratch(es) - Smart repair



Damage 1: Door - front right side: Brightware - lower - Scratch(es) - Smart repair



Damage 2: Interior: Cargo area floor - Soiled - Clean



Damage 2: Interior: Cargo area floor - Soiled - Clean



Damage 3: Door - front left side: Brightware - lower - Scratch(es) - Smart repair



Damage 3: Door - front left side: Brightware - lower - Scratch(es) - Smart repair



Damage 4: Electronic systems: Lane-keeping assistant - Electrical fault - Perform diagnosis



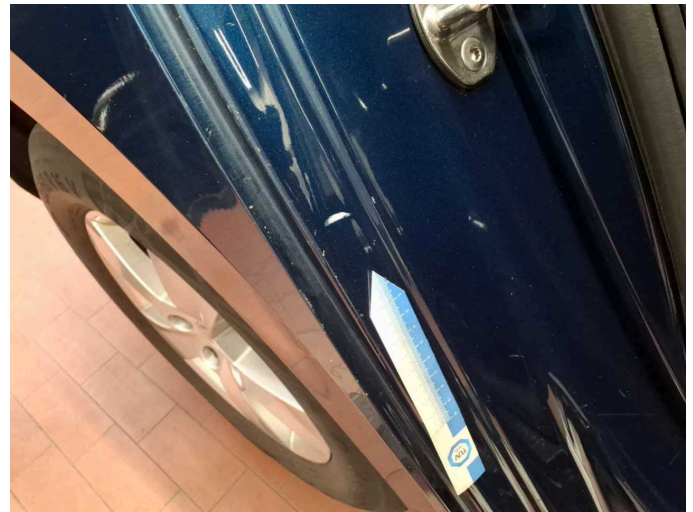
Damage 5: Door - front left side: Door - dent(s) - Smart repair



Damage 5: Door - front left side: Door - dent(s) - Smart repair



Damage 6: Side panel - rear right side: Sill - Scratch(es) - Smart repair



Damage 6: Side panel - rear right side: Sill - Scratch(es) - Smart repair



Damage 7: Door - rear left side: Door - Scratch(es) - Smart repair



Damage 7: Door - rear left side: Door - Scratch(es) - Smart repair



Damage 8: Front bumper: Front bumper (unterhalb) - Scratched - Smart repair



Damage 8: Front bumper: Front bumper (unterhalb) - Scratched - Smart repair



Damage 8: Front bumper: Front bumper (unterhalb) - Scratched - Smart repair



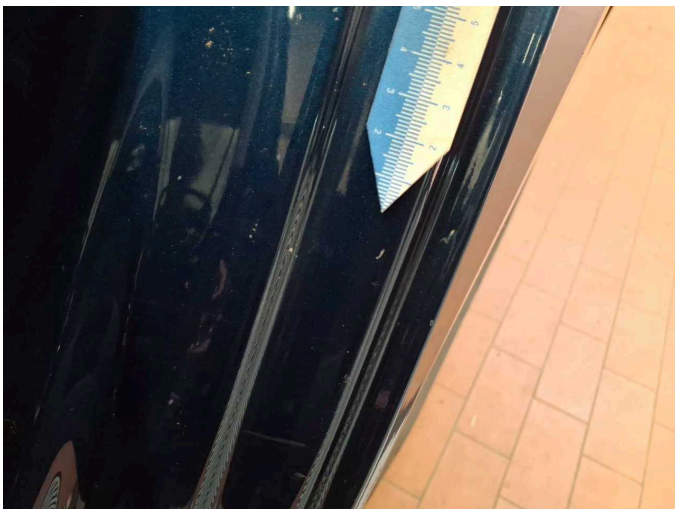
Damage 8: Front bumper: Front bumper (unterhalb) - Scratched - Smart repair



Damage 9: Side panel - rear left side: Sill - Dent / paintcoat damage - Smart repair



Damage 9: Side panel - rear left side: Sill - Dent / paintcoat damage - Smart repair



Damage 9: Side panel - rear left side: Sill - Dent / paintcoat damage - Smart repair



Damage 10: Rear bumper: Spoiler - Scratched - Replace



Damage 10: Rear bumper: Spoiler - Scratched - Replace



Damage 11: Side panel - rear right side: Side panel - Dent / paintcoat damage - Repair and paint



Damage 11: Side panel - rear right side: Side panel - Dent / paintcoat damage - Repair and paint



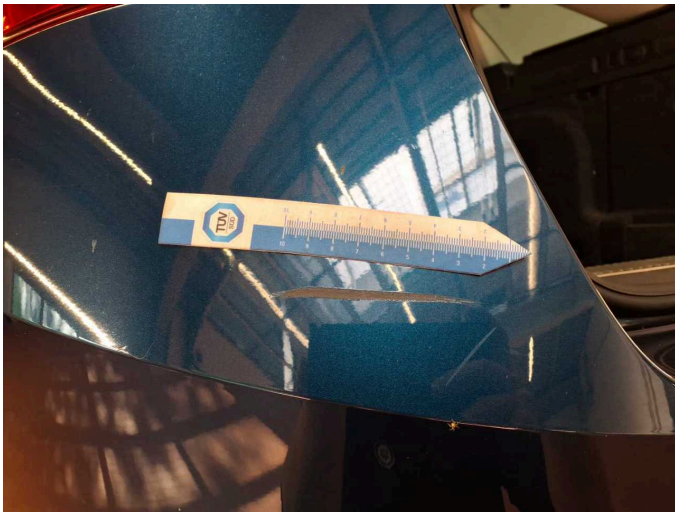
Damage 11: Side panel - rear right side: Side panel - Dent / paintcoat damage - Repair and paint



Damage 12: Rear bumper: Rear bumper - Scratched - Paint



Damage 12: Rear bumper: Rear bumper - Scratched - Paint



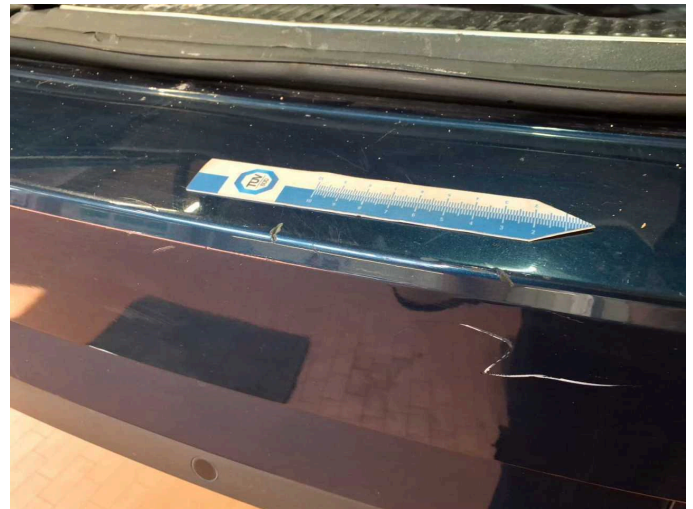
Damage 12: Rear bumper: Rear bumper - Scratched - Paint



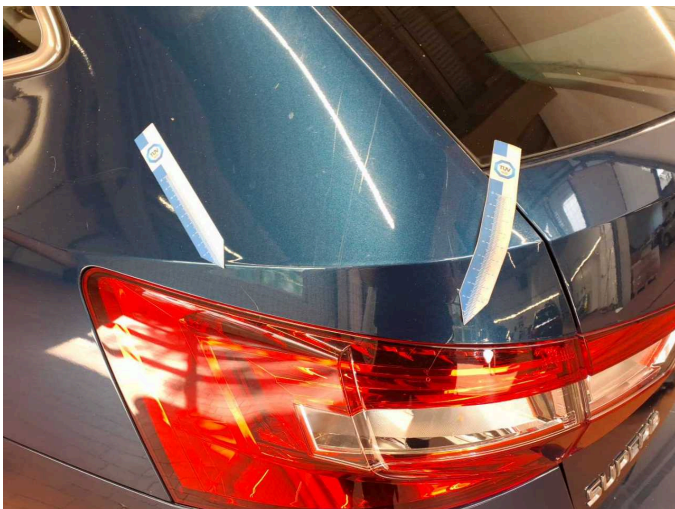
Damage 12: Rear bumper: Rear bumper - Scratched - Paint



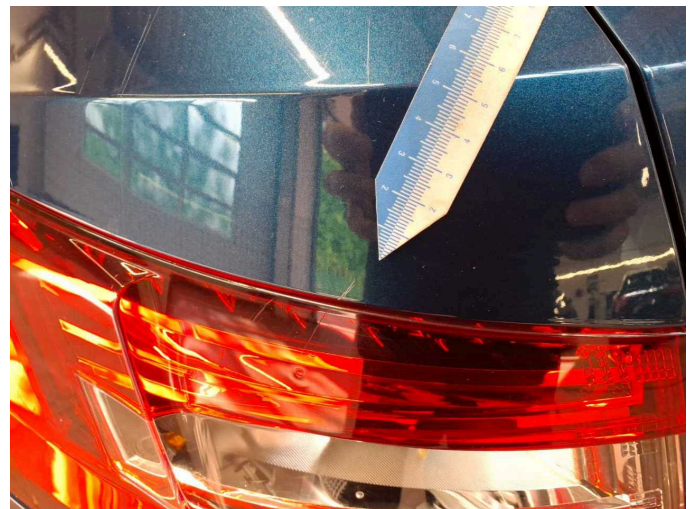
Damage 12: Rear bumper: Rear bumper - Scratched - Paint



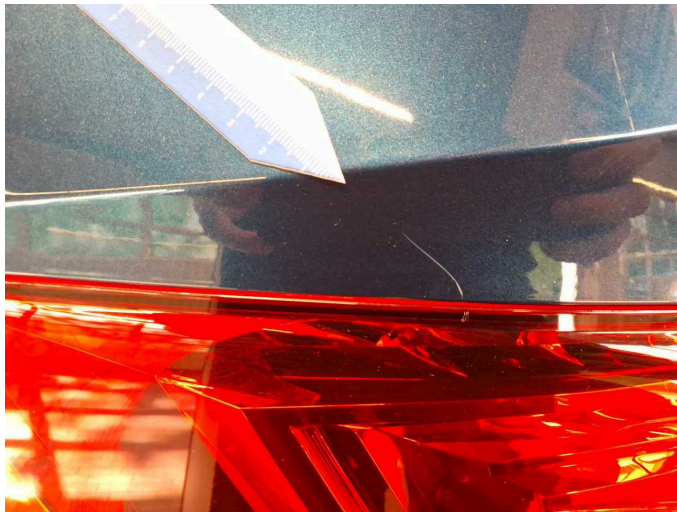
Damage 12: Rear bumper: Rear bumper - Scratched - Paint



Damage 13: Side panel - rear left side: Side panel - Dent / paintcoat damage - Repair and paint



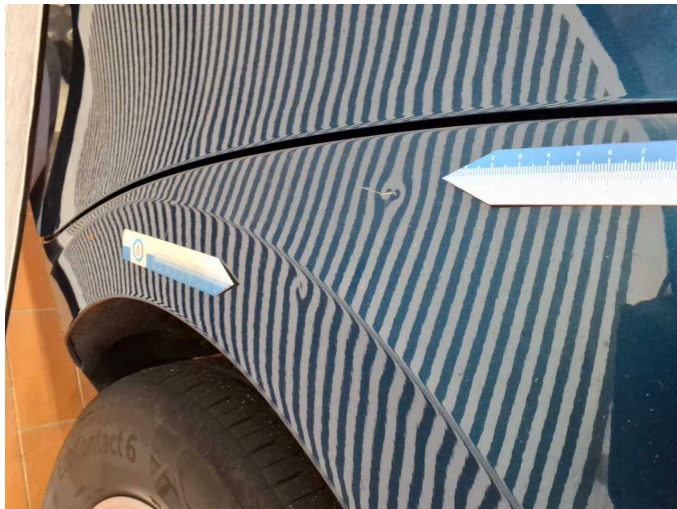
Damage 13: Side panel - rear left side: Side panel - Dent / paintcoat damage - Repair and paint



Damage 13: Side panel - rear left side: Side panel - Dent / paintcoat damage - Repair and paint



Damage 13: Side panel - rear left side: Side panel - Dent / paintcoat damage - Repair and paint



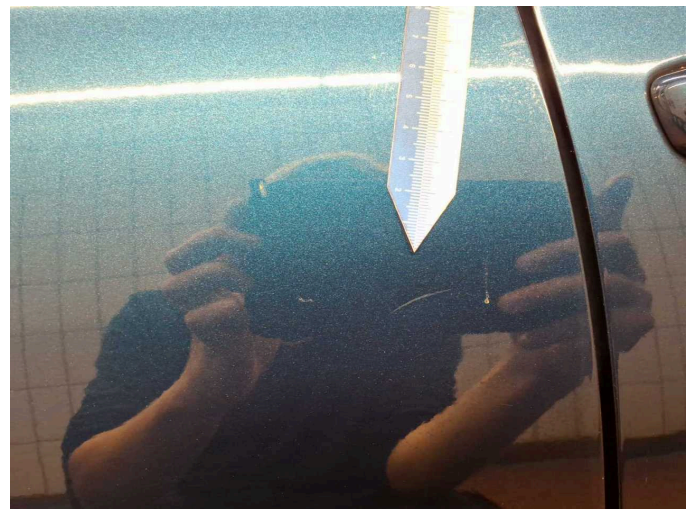
Damage 13: Side panel - rear left side: Side panel - Dent / paintcoat damage - Repair and paint



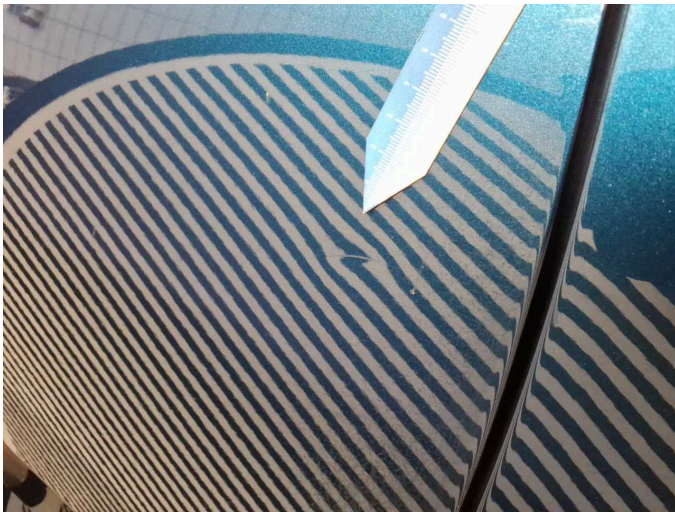
Damage 13: Side panel - rear left side: Side panel - Dent / paintcoat damage - Repair and paint



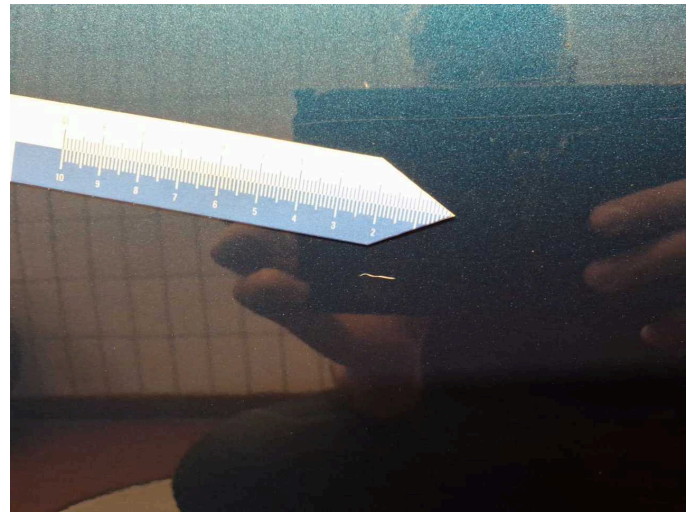
Damage 14: Door - rear right side: Door - Dent / paintcoat damage - Paint



Damage 14: Door - rear right side: Door - Dent / paintcoat damage - Paint



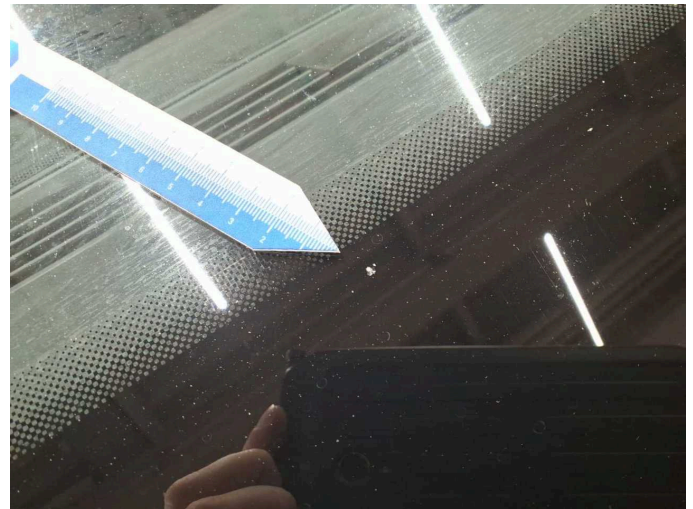
Damage 14: Door - rear right side: Door - Dent / paintcoat damage - Paint



Damage 14: Door - rear right side: Door - Dent / paintcoat damage - Paint



Damage 15: Vehicle glazing: Windscreen - Stone chips - Replace



Damage 15: Vehicle glazing: Windscreen - Stone chips - Replace



Damage 15: Vehicle glazing: Windscreen - Stone chips - Replace



Damage 15: Vehicle glazing: Windscreen - Stone chips - Replace



Wartungshistorie

(gemäß Auftraggeber Informationen)

Fahrgestellnummer: TMBJH7NP0N7021103
Hersteller / Modell: SKODA SKODA Superb Combi 2.0 TDI DSG Ambition

Datum	KM-Stand	Beschreibung
28.05.2025	96.039	AU; Kraftstofffilter ern; Luftfiltereinsatz ern; Motoröl b. Wartung; Ölfilter ern; Regelwartungsdienst; Wartung Sonstiges
22.05.2024	65.361	Bremse Sonstiges; Bremsflüssigkeit; Bremsflüssigkeit ern; Bremsklötze hinten; Bremsscheiben + Klötze v; Bremsscheiben hinten; Bremsscheiben vorne; Motoröl b. Wartung; Ölfilter ern; Regelwartungsdienst; Wartung Sonstiges
22.03.2023	34.563	Bremse Sonstiges; Bremsklötze hinten; Bremsklötze vorne
02.01.2023	27.914	Motoröl b. Wartung; Ölfilter ern; Regelwartungsdienst; Wartung Sonstiges