



Expertise

Protocol number: 41207891
Order No. / Reference: 25116147
Inspection date: 22 Aug 2025

Manufacturer: Skoda	Model: Octavia Combi 2.0 TDI DSG Style
VIN: TMBJG7NXXMY166161	



Vehicle details	
Manufacturer / Type / Model / Equipment	
Skoda Octavia Combi 2.0 TDI DSG Style	
Vehicle Identification number	TMBJG7NXXMY166161
Mileage (Read)	120,625 km
First registration	12 Jul 2021
Number of holders	1
Next periodical technical inspection	07/2026
(Report on hand)	
Power / Engine displacement	85 kw / 1,968 ccm
Fuel type / Cylinder	Diesel / 4
Gearbox / Number of gears	Automatic / 7
Type of drive	Front drive
Type of vehicle	Station wagon
Colour / colour code	Reflexsilber metallic (A7W)
Doors / Seats	5 / 5
Upholstery type	Cloth
Colour of upholstery	Black-Anthracite
Vehicle with smoke odor	no



Vehicle details

Maintenance booklet / proof	digital proof / complete	Next maintenance in	24,500 km
Last maintenance on / at	06/2025 at 115,039 km		
Key is / should be	2 / 2	FZG documents	ZB#2 (B) was available (copy), ZB#1 (S) was not available
		Letter No.	GD062027
Previous damage / Accident	Detectable	Repainting	None detectable
Inspection conditions	sufficient	Lifting equipment / pit	yes
Test drive	short drive on the company premises	Engine function test	Performed
Manufacturer key number/ type code number	8004 / AWK 00111		
Emission standard	EURO6;WLTP;AP;PI/CI; M, N1 I	Fine dust sticker	
Permitted total weight	1,970 kg	Empty weight	

Tyres

Mounted tyres

#	Tyre size	Type of tyre	Manufacturer	Tread depth
1)	205/55 R17 91W	Summer tyres on Light alloy	Bridgestone	4mm / 4mm
2)	205/55 R17 91W	Summer tyres on Light alloy	Bridgestone	4mm / 4mm

Additional tyres

#	Tyre size	Type of tyre	Manufacturer	Tread depth
1)	205/60 R16 92H	Winter tyres on Light alloy	Bridgestone	5mm / 5mm
2)	205/60 R16 92H	Winter tyres on Light alloy	Bridgestone	6mm / 6mm

Replacement

Typ	Tyre size	Type of tyre	Manufacturer	Tread depth
	Tirefit	Expiration date 03/2025		

Legend: Tread depth information for tires on the left is in the first place, for tires on the right is in the second place on the axle in the direction of travel

Equipment

Standard equipment

- Storage compartment in the luggage compartment with cargo element
- Airbag, driver and front passenger (front passenger airbag can be switched off)
- Airbag, driver's knee airbag
- Airbag, head airbags
- Airbag, front side airbags
- Ambient lighting (dashboard, decorative strips at the front and footwell with selectable color climate) in the interior and logo projector outside)
- Automatically dimming exterior mirror (driver's side)
- Exterior mirrors with memory function (boarding spots in the exterior mirrors as well as memory function and mirror lowering)
- hill start assist including auto-hold function
- Glasses compartment on the roof lining
- Roof rails, anodized
- diesel particulate filter
- tachometer
- Electronic parking brake
- Electronic Stabilization Control (ESC)
- Driving profile selection
- Electric windows front and rear, including anti-pinch protection and child safety lock
- Cruise control system
- Tinted windows
- Heated rear window
- Rear window wiper including windscreen washer system
- ISOFIX preparations on the front passenger seat and the outer rear seats including top tether anchorage
- Climatronic air conditioning (2-zone) (fully automatic, separately adjustable for driver and front passenger and anti-allergen filter & activated carbon filter - climate-controlled and illuminated glove compartment)
- LED license plate lighting
- Remote release of the rear seat backrests in the trunk
- Steering wheel: Leather steering wheel with multifunction buttons and shift paddles (leather steering wheel and shift lever with leather elements - infotainment and driver assistance system controls)
- Parking sensors front and rear
- Radio: Bolero music system with capacitive 10" color display
- Radio accessories: Bluetooth hands-free system
- Radio accessories: voice control
- Tire pressure monitoring
- Wheels: 17" Rotare AERO alloy wheels (7J x 17, ET 46 with 205/55 R17 tires)
- Safety lights in the front side doors
- Storage compartments (four roof grab handles, rear with coat hooks, holder for the safety vest under the driver's seat, storage compartments in the front door panels with 1.5l bottle holder, storage compartments in the rear door panels with 0.5l bottle holder, ticket holder on the windshield, coat hooks on the B-pillars, storage compartments in the doors with fleece lining)
- Anti-lock braking system (ABS)
- Traction control (ASR)
- Dashboard center section with fabric cover
- Exterior mirrors electrically adjustable and heated
- Exterior mirrors, electrically folding
- Heated windscreen washer nozzles including 5l washer fluid reservoir
- Hydraulic brake assist (HBA)
- Grey headliner
- Decorative strip in silver feel with ambient lighting
- Digital instrument cluster (Virtual Cockpit) 10.2"
- Third brake light
- Electronic transverse differential lock (XDS+)
- Driving light assistant (coming home / leaving home function)
- Front radar assistant including city emergency braking function and person and cyclist detection
- Transmission: 7-speed direct shift gearbox (DSG)
- Green tec: Automatic start/stop system including brake energy recovery
- Interior mirror automatically dimming
- Kessy, keyless entry and start-stop system
- Electronic child lock
- Removable trunk cover
- Headrests (5) front and rear height adjustable
- LED fog lights
- LED taillights in crystal glass look and animated indicators
- LED headlights with LED daytime running lights
- Steering wheel: height and length adjustable
- Manual headlight range adjustment
- Rear center armrest with through-loading option
- Front center armrest, including storage compartment
- Engine drag torque control (MSR)
- Upholstery: Cloth
- Radio accessories: 2 USB-C ports at the front
- Radio accessories: 8 speakers
- Radio accessories: Digital radio reception DAB+
- Rain sensor
- Tire mobility kit (tire repair spray including compressor)
- Power steering, electromechanical
- Seat belts (three three-point seat belts in the rear)



- Seats: Electrically adjustable front seats with memory function
- Seats: Rear seat backrest 60:40 split folding
- Speed limiter
- Lane keeping assistant (Lane Assist)
- Lane change and rear traffic assistant as well as exit warning
- 12-V socket in the trunk
- Telephone: Phonebox with inductive charging function (connection via the external antenna)
- Phone: SmartLink (MirrorLink, Apple CarPlay, Android Auto)
- Phone: Wireless SmartLink for Apple CarPlay
- Lashing eyes in the trunk
- Central locking including radio remote control integrated in the key and EASY Start

- Seats: Heated front seats
- Seats: Height-adjustable driver and passenger seats (including lumbar supports)
- SKODA Care Connect (SOS emergency call function (eCall+ including automatic activation in the event of an accident with airbag deployment) -Mobility service (connection option for quick assistance in the event of a breakdown) -Information service (connection option to the hotline for all questions about vehicle functions) -Free remote vehicle access for 1 year (Remote Access) with access to vehicle data and functions via smartphone, e.g. parking position, switching on hazard lights, current fuel tank status)
- Immobiliser

Extra equipment

- Trailer coupling, pivoting including trailer stabilization and adapter
- Package: Infotainment Columbus Plus (Columbus navigation system - Infotainment Online (3-year subscription) - Head-Up Display)
- Electric panoramic sunroof (no glasses compartment on the roof lining)
- Seats: Manually adjustable Ergo seats in the front (massage function - electrically adjustable lumbar support - pull-out leg rest)
- Sunset (rear window and rear side windows dark tinted)

- Luggage net partition
- Paint finish: metallic
- Package: Travel (DSG) (Traveler assistance system: - Traffic sign recognition - Predictive and adaptive cruise control (pACC) - Adaptive lane keeping assistant - Emergency and traffic jam assistant - Capacitive steering wheel with hands-off detection - Adaptive cruise control (ACC) (control range 210 km/h) - Drowsiness detection - Driving profile selection - Automatically dimming exterior mirror (driver's side))
- Variable loading floor in the trunk including organizer and aluminum crossbars

Brief expert findings

Documents submitted	At the time of the inspection, the registration certificate Part 2 (letter) was available, but the registration certificate Part 1 (certificate) was not. (Copy)
VIN comparison	The vehicle identification number (VIN) was read from the vehicle and its conformity with the submitted documents was verified during the inspection by the undersigned.
Inspection	The inspection conditions were sufficient for the assessment of the vehicle. Lifting equipment and a pit were available for examining the vehicle.
Test drive	A short maneuvering and shunting trip was carried out on the company premises.
Engine function test	An engine test run was performed.

Value reducing factors

No.	Component group	Description
1	Equipment	Tirefit filler - Due - Replace
2	Mudguard - right side	Mudguard - right side - Stone chips - Smart repair
3	Door - rear right side	Door - Scratch(es) - Smart repair
4	Side panel - rear right side	Sill - Scratch(es) - Smart repair
5	Door - rear left side	Door - Scratch(es) - Smart repair
6	Steering system	Steering wheel - Scratch(es) - Smart repair
7	Wheel / tyres	Alloy rim - rear right side - Scratched - Smart repair
8	Wheel / tyres	Alloy rim - front left side - Scratched - Smart repair
9	Wheel / tyres	Alloy rim - front right side - Scratched - Smart repair



No.	Component group	Description
10	Sill - left side	Sill - Dent / paintcoat damage - Smart repair
11	Door - front left side	Door (Verätzung) - Paint defect - Smart repair
12	Sill - right side	Sill - Deformed - Repair and paint
13	Door - front right side	Door - Dent / paintcoat damage - Repair and paint
14	Rear bumper	Rear bumper - Scratched - Paint
15	Bonnet	Bonnet - Dent / paintcoat damage - Repair and paint

Wear and tear

No.	Component group	Description
1	Vehicle glazing	Windscreen - Stone chips - No deduction
2	Side panel - rear left side	Sill - Scratch(es) - No deduction
3	Wing mirror - left side	Wing mirror - Scratch(es) - No deduction
4	2nd wheel set	2nd wheel set - Scratched - No deduction
5	Roof	Roof - Stone chips - Cover / polish

The vehicle shows signs of wear commensurate with its age and use.

Accident damages

No. Accident

- 1 Front, Side - left

Order/Scope of order

The order was placed to prepare a sales report for the vehicle described. This includes the following:

- Description of core relevant information about the vehicle
- Documentation of equipment features
(*Delivery by third-party service providers*)
- Documentation of damage, defects, missing parts
- Documentation of previous damage, unrepaired previous damage, repainting
- a brief visual or functional inspection of the equipment details if possible.
(*Functional tests of driver assistance systems are not included in the scope of services!*)
- a photo documentation of the vehicle



Basis for the order

This product is based on the Alphabet Fuhrpark GmbH guidelines for vehicle returns and valuations. The expert makes the explicit findings in each individual case objectively within the framework of the specified standards based on his or her own expertise.

The vehicle inspection takes place in a disassembled state.

Damage or defects that can only be detected during disassembly/diagnosis work or through advanced knowledge remain within the scope of the prognosis risk. An extended risk exists for concealed defects caused by fraudulent deception and not identifiable by the expert.

Damage or defects resulting from normal use or wear and tear of the vehicle will be accepted according to the applicable standard.

There was no explicit identification or monetary consideration of the expected features within the product.

Features which in their nature and severity slightly exceed normal use but do not constitute unacceptable damage will be documented and identified under signs of use if necessary.

Damage or defects which, according to the underlying standard, can no longer be attributed to normal use or wear and tear are listed in the product under "Depreciating Factors".

Depending on the product specification, a monetary ID can be provided. If this takes place, the costs can be 100% d or pro rata depending on the vehicle's age and mileage.

Previous damages

Non-repaired previous damages were found at the vehicle. The necessary repair costs are listed in the expert report or if necessary, are listed in detail in a separately enclosed repair cost calculation.



Figure 1: Diagonal front (left)



Figure 2: Diagonal front (right)



Figure 3: Diagonal rear (left)



Figure 4: Diagonal rear (right)



Figure 5: Interior - front



Figure 6: Interior - rear



Figure 7: Instrument cluster



Figure 8: Instrument panel



Figure 9: interior 360° view



Figure 10: Cargo area



Figure 11: VIN



Figure 12: Mounted tyres



Figure 13: Documents

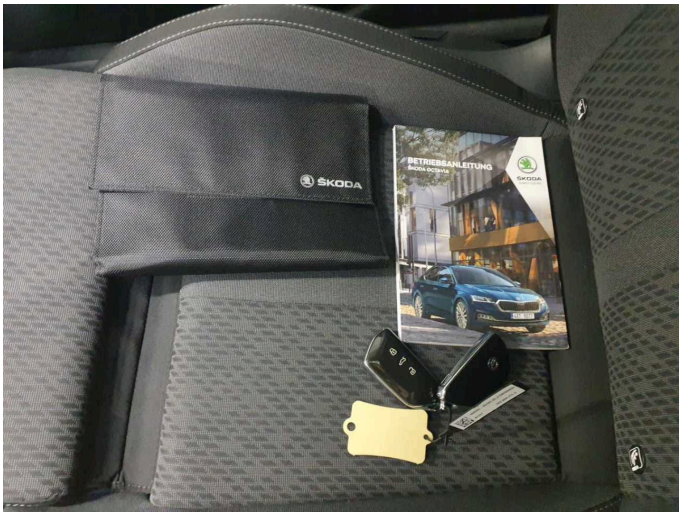


Figure 14: Documents

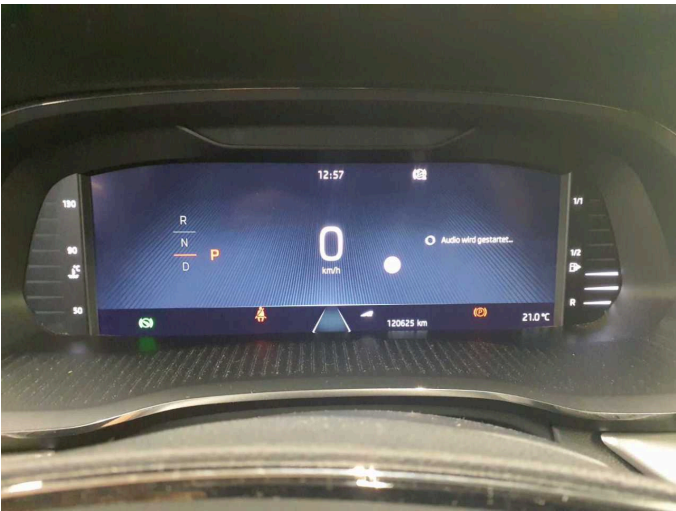


Figure 15: Documents



Figure 16: Documents



Figure 17: Additional tyres

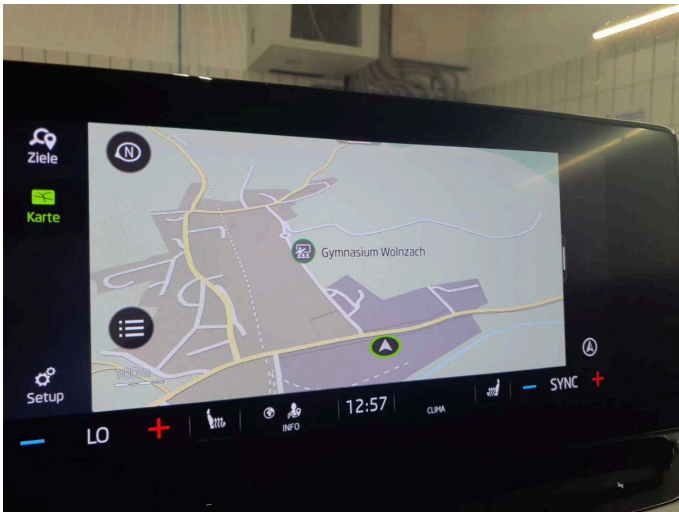


Figure 18: Navigation



Figure 19: Misc.



Figure 20: Misc.



Figure 21: Misc.



Figure 22: Misc.



Figure 23: Misc.



Figure 24: Misc.



Figure 25: Misc.



Figure 26: Misc.



Figure 27: Misc.



Figure 28: Misc.



Figure 29: Misc.



Damage 1: Equipment: Tirefit filler - Due - Replace



Damage 2: Mudguard - right side: Mudguard - right side - Stone chips - Smart repair



Damage 2: Mudguard - right side: Mudguard - right side - Stone chips - Smart repair



Damage 3: Door - rear right side: Door - Scratch(es) - Smart repair



Damage 3: Door - rear right side: Door - Scratch(es) - Smart repair



Damage 4: Side panel - rear right side: Sill - Scratch(es) - Smart repair



Damage 4: Side panel - rear right side: Sill - Scratch(es) - Smart repair



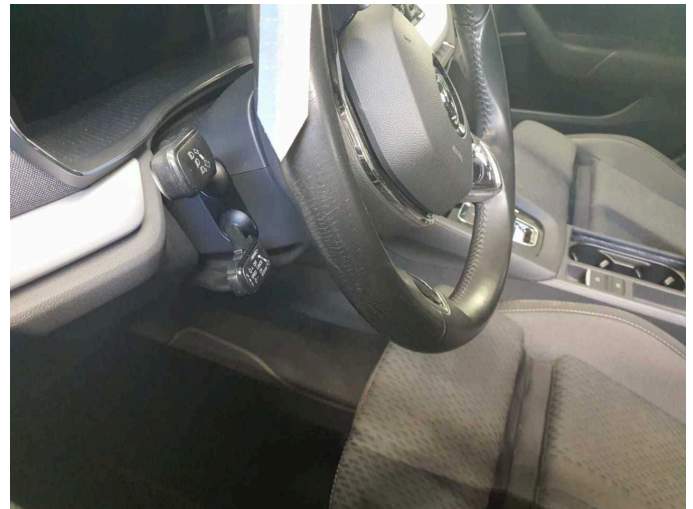
Damage 5: Door - rear left side: Door - Scratch(es) - Smart repair



Damage 5: Door - rear left side: Door - Scratch(es) - Smart repair



Damage 6: Steering system: Steering wheel - Scratch(es) - Smart repair



Damage 6: Steering system: Steering wheel - Scratch(es) - Smart repair



Damage 7: Wheel / tyres: Alloy rim - rear right side - Scratched - Smart repair



Damage 7: Wheel / tyres: Alloy rim - rear right side - Scratched - Smart repair



Damage 8: Wheel / tyres: Alloy rim - front left side - Scratched - Smart repair



Damage 8: Wheel / tyres: Alloy rim - front left side - Scratched - Smart repair



Damage 9: Wheel / tyres: Alloy rim - front right side - Scratched - Smart repair



Damage 9: Wheel / tyres: Alloy rim - front right side - Scratched - Smart repair



Damage 10: Sill - left side: Sill - Dent / paintcoat damage - Smart repair



Damage 10: Sill - left side: Sill - Dent / paintcoat damage - Smart repair



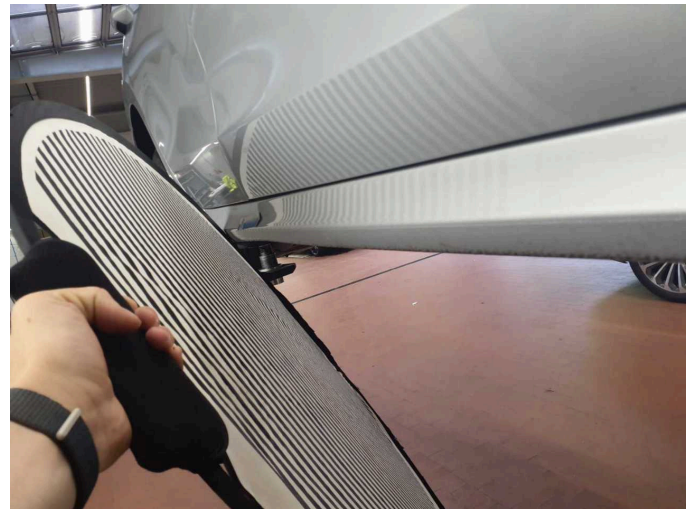
Damage 10: Sill - left side: Sill - Dent / paintcoat damage - Smart repair



Damage 11: Door - front left side: Door (Verätzung) - Paint defect - Smart repair



Damage 11: Door - front left side: Door (Verätzung) - Paint defect - Smart repair



Damage 12: Sill - right side: Sill - Deformed - Repair and paint



Damage 12: Sill - right side: Sill - Deformed - Repair and paint



Damage 12: Sill - right side: Sill - Deformed - Repair and paint



Damage 13: Door - front right side: Door - Dent / paintcoat damage - Repair and paint



Damage 13: Door - front right side: Door - Dent / paintcoat damage - Repair and paint



Damage 13: Door - front right side: Door - Dent / paintcoat damage - Repair and paint



Damage 14: Rear bumper: Rear bumper - Scratched - Paint



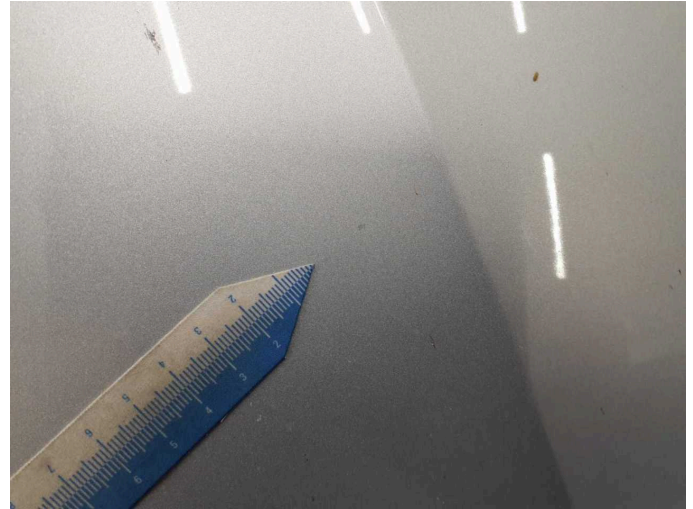
Damage 14: Rear bumper: Rear bumper - Scratched - Paint



Damage 14: Rear bumper: Rear bumper - Scratched - Paint



Damage 15: Bonnet: Bonnet - Dent / paintcoat damage - Repair and paint



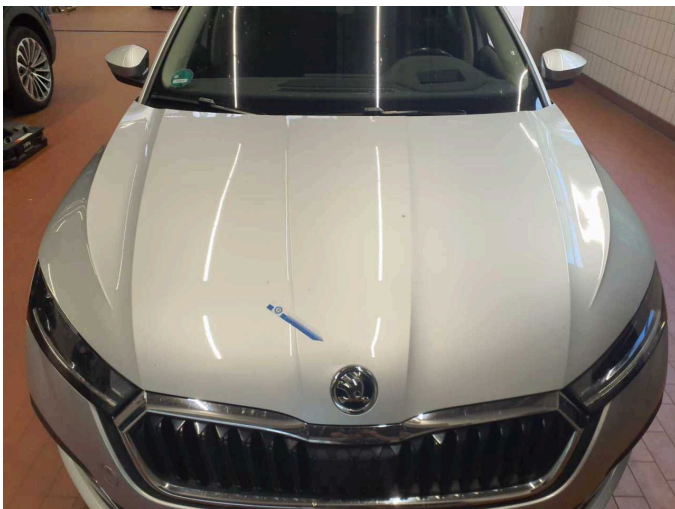
Damage 15: Bonnet: Bonnet - Dent / paintcoat damage - Repair and paint



Damage 15: Bonnet: Bonnet - Dent / paintcoat damage - Repair and paint



Damage 15: Bonnet: Bonnet - Dent / paintcoat damage - Repair and paint



Damage 15: Bonnet: Bonnet - Dent / paintcoat damage - Repair and paint



Accident 1: Front, Side - left



Accident 1: Front, Side - left



Accident 1: Front, Side - left



Accident 1: Front, Side - left



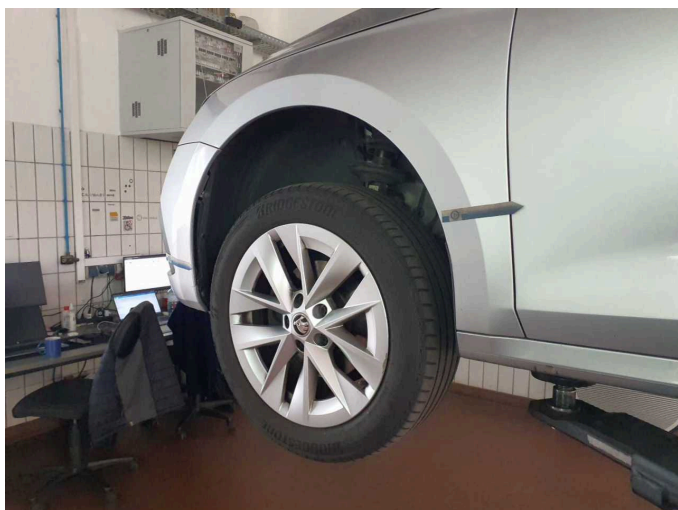
Accident 1: Front, Side - left



Accident 1: Front, Side - left



Accident 1: Front, Side - left



Accident 1: Front, Side - left



Wartungshistorie

(gemäß Auftraggeber Informationen)

Fahrgestellnummer: TMBJG7NXXMY166161
Hersteller / Modell: SKODA SKODA Octavia Combi 2.0 TDI DSG Style

Datum	KM-Stand	Beschreibung
27.06.2025	115.039	Batterie ern; Bremsflüssigkeit; Bremsflüssigkeit ern; Motoröl b. Wartung; Ölfilter ern; Regelwartungsdienst; Wartung Sonstiges
10.01.2025	89.540	Kraftstofffilter ern; Luftfiltereinsatz ern; Motoröl b. Wartung; Ölfilter ern; Ölwechsel; Systemtest/Eigendiagnose; Wartung Sonstiges; Wartung Sonstiges
26.07.2024	82.442	AU; Regelwartungsdienst; Systemtest/Eigendiagnose; Wartung Sonstiges
17.05.2024	75.989	Funktionsprüfung; Reparatur Sonstiges; Systemtest/Eigendiagnose
16.05.2024	75.989	Bremse Sonstiges; Bremsklötze hinten; Bremsklötze vorne; Bremsscheiben hinten; Bremsscheiben vorne; Motoröl b. Wartung; Ölfilter ern; Ölwechsel; Systemtest/Eigendiagnose; Wartung Sonstiges
15.06.2023	52.040	Bremsflüssigkeit ern; Motoröl b. Wartung; Regelwartungsdienst
18.07.2022	26.464	Motoröl b. Wartung; Ölfilter ern; Regelwartungsdienst; Wartung Sonstiges