



Expertise

Protocol number: 40631937  
Order No. / Reference: 24957508  
Inspection date: 17 Jul 2025

Manufacturer: Skoda  
VIN: TMBJG7NX9MY047226

Model: Octavia Combi 2.0 TDI First Edition



Vehicle details	
Manufacturer / Type / Model / Equipment	
Skoda Octavia Combi 2.0 TDI First Edition	
Vehicle Identification number	TMBJG7NX9MY047226
Mileage (Read)	109,696 km
First registration	4 Nov 2020
Number of holders	1
Power / Engine displacement	85 kw / 1,968 ccm
Fuel type / Cylinder	Diesel / 4
Gearbox / Number of gears	Manual / 6
Type of drive	Front drive
Type of vehicle	Station wagon
Colour / colour code	Quarz-Grau Metallic (F7Y)
Doors / Seats	5 / 5
Upholstery type	Leather
Colour of upholstery	Black



## Vehicle details

<b>Maintenance booklet / proof</b>	digital proof / complete	<b>Next maintenance in</b>	21,900 km
<b>Last maintenance on / at</b>	06/2025 at 109,139 km		
<b>Key is / should be</b>	3 / 3	<b>FZG documents</b>	ZB#2 (B) was available (copy), ZB#1 (S) was not available
		<b>Letter No.</b>	FX211456
<b>Previous damage / Accident</b>	None detectable	<b>Repainting</b>	None detectable
<b>Inspection conditions</b>	Sufficient	<b>Lifting equipment / pit</b>	yes
<b>Test drive</b>	Not performed	<b>Engine function test</b>	Performed
<b>Manufacturer key number/ type code number</b>	8004 / AWK 00013		
<b>Emission standard</b>	EURO6;WLTP;DG;PI/CI; M, N1 I	<b>Fine dust sticker</b>	
<b>Permitted total weight</b>	1,940 kg	<b>Empty weight</b>	

## Tyres

### Mounted tyres

#	Tyre size	Type of tyre	Manufacturer	Tread depth
1)	205/55 R17 95V	Summer tyres on Light alloy	Pirelli	6mm / 6mm
2)	205/55 R17 95V	Summer tyres on Light alloy	Pirelli	6mm / 6mm

### Additional tyres

#	Tyre size	Type of tyre	Manufacturer	Tread depth
1)	205/60 R16 92H	Winter tyres on Light alloy	Goodyear	6mm / 6mm
2)	205/60 R16 92H	Winter tyres on Light alloy	Goodyear	6mm / 6mm

### Replacement

Typ	Tyre size	Type of tyre	Manufacturer	Tread depth
N	125/70 R18 99M	Summer tyres on Steel	Sonstige	4 mm

**Legend:** Tread depth information for tires on the left is in the first place, for tires on the right is in the second place on the axle in the direction of travel

## Equipment

### Standard equipment

- Shelves
- Airbag, driver's knee airbag
- Airbag, front side airbags
- Traction control (ASR)
- Automatically dimming exterior mirror (driver's side)
- Exterior mirrors with memory function
- Heated windscreen washer nozzles including 5l washer fluid reservoir
- Grey headliner
- diesel particulate filter
- tachometer
- Electronic parking brake
- Electronic Stabilization Control (ESC)
- Driving profile selection
- Front radar assistant including city emergency braking function with person detection
- Transmission: 6-speed manual transmission
- Green tec: Automatic start/stop system including brake energy recovery
- Rear window wiper including windscreen washer system
- ISOFIX preparations on the front passenger seat and the outer rear seats including top tether anchorage
- Electronic child lock
- Removable trunk cover
- LED fog lights
- LED rear lights
- Remote release of the rear seat backrests in the trunk
- Steering wheel: Leather steering wheel with multifunction buttons
- Front center armrest, including storage compartment
- Engine drag torque control (MSR)
- Parking sensors front and rear
- Upholstery: Cloth
- Radio accessories: 8 speakers
- Radio accessories: voice control
- Tire pressure monitoring
- Wheels: 17" Rotare AERO alloy wheels
- Seat belts
- Seats: Heated front seats
- Seats: Height-adjustable driver and passenger seats
- Seats: Rear seat backrest 60:40 split folding
- SKODA Infotainment Online
- Lane keeping assistant (Lane Assist)
- 12-V socket in the trunk
- Telephone: Phonebox with inductive charging function (connection via the external antenna)
- Bluetooth hands-free phone system
- Immobiliser
- Airbag, driver and passenger
- Airbag, head airbags
- Anti-lock braking system (ABS)
- Dashboard center section with fabric cover
- Exterior mirrors electrically adjustable and heated
- Exterior mirrors, electrically folding
- hill start assist including auto-hold function
- Hydraulic brake assist (HBA)
- Roof rails, anodized
- Digital instrument cluster (Virtual Cockpit) 10.2"
- Third brake light
- Electronic transverse differential lock (XDS+)
- Driving light assistant
- Electric windows front and rear, including anti-pinch protection and child safety lock
- Cruise control system
- Tinted windows
- Taillights in crystal glass look and animated indicators
- Heated rear window
- Interior mirror automatically dimming
- KESSY (Keyless Access and Start-Stop System)
- Child safety locks on the rear doors
- Climatronic air conditioning (2 zones)
- Headrests (5) front and rear height adjustable
- LED ambient lighting
- LED headlights with LED daytime running lights
- Steering wheel: height and length adjustable
- Manual headlight range adjustment
- Rear center armrest with cup holders and through-loading option
- Columbus navigation system with capacitive 10" color display
- Radio accessories: 2 USB-C ports at the front
- Radio accessories: Digital radio reception DAB+
- Rain sensor
- Tire mobility set
- Power steering, electromechanical
- Safety lights in the front side doors
- Seats: Electrically adjustable front seats with memory function
- SKODA Care Connect
- Speed limiter
- Lane change and rear traffic assistant as well as exit warning
- Phone: SmartLink (MirrorLink, Apple CarPlay, Android Auto)
- Phone: Wireless SmartLink for Apple CarPlay
- Lashing eyes in the trunk
- Central locking including radio remote control integrated in the key and EASY Start



## Extra equipment

- Trailer coupling, pivoting including trailer stabilization and adapter
- Package: Comfort & Relax (Combi) (3-zone Climatronic - Sunset (rear window and rear side windows dark tinted) - Acoustic glazing in the front side windows - Heated front and outer rear seats - Heated steering wheel - 230 V socket and 3 x USB charging ports - Sun blinds in the rear doors - Sleeping headrests in the rear - Multifunctional storage in the trunk)
- Package: Simply Clever for variable loading floor (media holder - tablet holder - waste bin - 3rd vehicle key)
- Electric panoramic sunroof (no glasses compartment on the roof lining)
- Seats: Ergo comfort seats in the front (AGR seal of approval) (massage function - pull-out leg rest - seat ventilation - leather interior)
- Variable loading floor in the trunk including organizer and aluminum crossbars
- Paint finish: metallic
- Package: Columbus Plus infotainment package (Combi) (Columbus navigation system - Infotainment Online (3-year term) - Head-Up Display - Electric tailgate operation - Comfort opening - Luggage net partition)
- Package: Travel (Traveler assistance system: - Traffic sign recognition - Predictive and adaptive cruise control (pACC) - Adaptive lane keeping assistant - Capacitive steering wheel with hands-off detection - Adaptive cruise control (ACC) (control range 210 km/h) - Drowsiness detection - Driving profile selection - Automatically dimming exterior mirror (driver's side))
- Radio accessories: CANTON sound system and 18" steel spare wheel (12 speakers (10 speakers, 1 central speaker, 1 subwoofer in the spare wheel well) - 18" steel spare wheel (125/70 R18 tires) including jack and wheel wrench)
- Heated windshield

## Brief expert findings

Documents submitted	At the time of the inspection, the registration certificate Part 2 (letter) was available, but the registration certificate Part 1 (certificate) was not. (Copy)
VIN comparison	The vehicle identification number (VIN) was read and the undersigned verified that it matched the documents submitted during the inspection.
Inspection	The inspection conditions were sufficient for the assessment of the vehicle. Lifting equipment and a pit were available for examining the vehicle.
Test drive	No test drive/maneuvering was carried out during the inspection of the vehicle.
Engine function test	An engine test run was performed.

## Value reducing factors

No.	Component group	Description
1	Wing mirror - left side	Cap - Scratch(es) - Smart repair
2	Bonnet	Bonnet - dent(s) - Smooth repair work
3	Door - front right side	Door handle - outside - Scratch(es) - Smart repair
4	Door - front left side	Door edge - Scratch(es) - Smart repair
5	Wheel / tyres	Alloy rim - front right side - Scratch(es) - Loss in value
6	Mudguard - left side	Mudguard - left side - Scratch(es) - Paint
7	Door - rear right side	Door - Scratched - Paint
8	Front bumper	Front bumper - Scratched - Paint
9	Side panel - rear right side	Side panel - Dent / paintcoat damage - Repair and paint
10	Rear bumper	Rear bumper - Dent / paintcoat damage - Repair and paint

## Wear and tear

No.	Component group	Description
1	Door - front right side	Door - Scratch(es) - No deduction

The vehicle shows signs of wear commensurate with its age and use.



## Order/Scope of order

The order was placed to prepare a sales report for the vehicle described. This includes the following:

- Description of core relevant information about the vehicle
- Documentation of equipment features  
(*Delivery by third-party service providers*)
- Documentation of damage, defects, missing parts
- Documentation of previous damage, unrepaired previous damage, repainting
- a brief visual or functional inspection of the equipment details if possible.  
(*Functional tests of driver assistance systems are not included in the scope of services!*)
- a photo documentation of the vehicle

## Basis for the order

This product is based on the Alphabet Fuhrpark GmbH guidelines for vehicle returns and valuations. The expert makes the explicit findings in each individual case objectively within the framework of the specified standards based on his or her own expertise.

The vehicle inspection takes place in a disassembled state.

Damage or defects that can only be detected during disassembly/diagnosis work or through advanced knowledge remain within the scope of the prognosis risk. An extended risk exists for concealed defects caused by fraudulent deception and not identifiable by the expert.

Damage or defects resulting from normal use or wear and tear of the vehicle will be accepted according to the applicable standard.

There was no explicit identification or monetary consideration of the expected features within the product.

Features which in their nature and severity slightly exceed normal use but do not constitute unacceptable damage will be documented and identified under signs of use if necessary.

Damage or defects which, according to the underlying standard, can no longer be attributed to normal use or wear and tear are listed in the product under "Depreciating Factors".

Depending on the product specification, a monetary ID can be provided. If this takes place, the costs can be 100% d or pro rata depending on the vehicle's age and mileage.

## Previous damages

Apparently, no repaired previous damage could be found on the vehicle.

## Comments

- Winterradsatz ist kein Bestandteil des Auslieferungsumfangs



Figure 1: Diagonal front (left)



Figure 2: Diagonal front (right)



Figure 3: Diagonal rear (left)



Figure 4: Diagonal rear (right)



Figure 5: Interior - front



Figure 6: Interior - rear



Figure 7: Instrument cluster



Figure 8: Instrument panel



Figure 9: interior 360° view ([Online link](#))



Figure 10: Cargo area



Figure 11: VIN



Figure 12: Mounted tyres



Figure 13: Documents

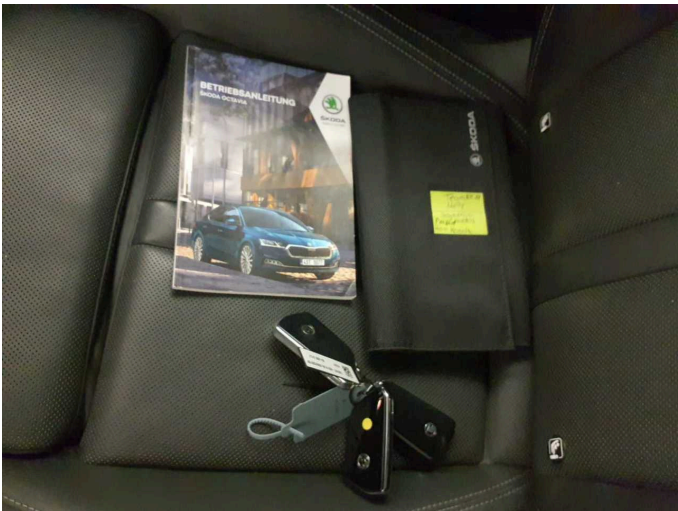


Figure 14: Documents



Figure 15: Additional tyres



Figure 16: Navigation

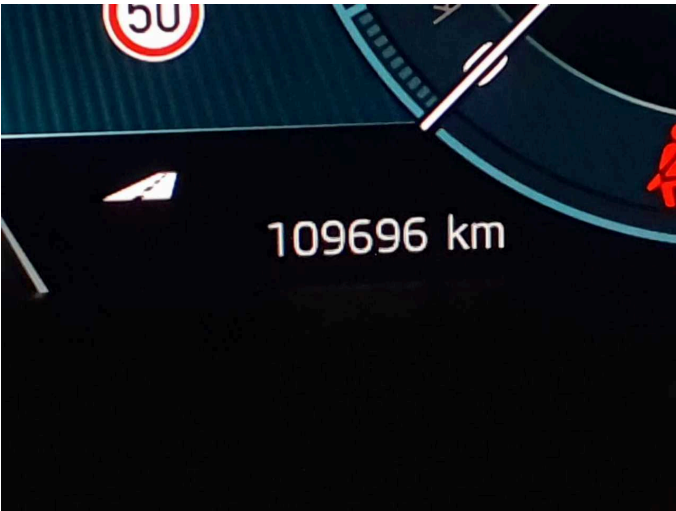


Figure 17: Misc.



Figure 18: Misc.



Figure 19: Misc.



Figure 20: Misc.



Figure 21: Misc.



Figure 22: Misc.



Figure 23: Misc.



Figure 24: Misc.



Figure 25: Misc.



Figure 26: Misc.



Figure 27: Misc.



Figure 28: Misc.



Figure 29: Misc.

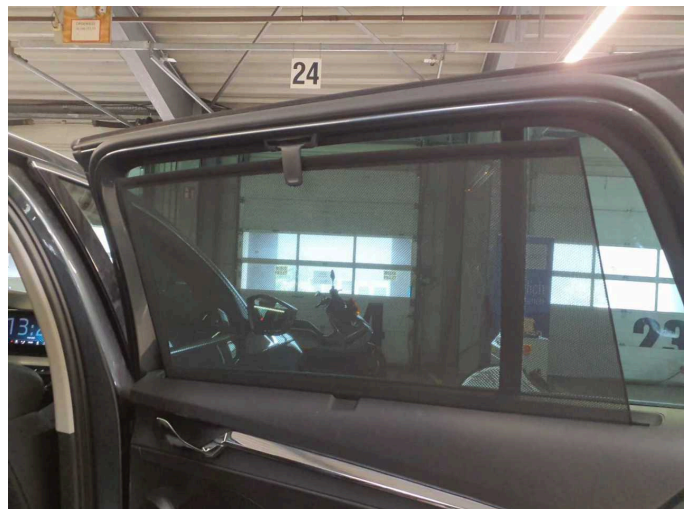


Figure 30: Misc.



Figure 31: Misc.



Figure 32: Misc.

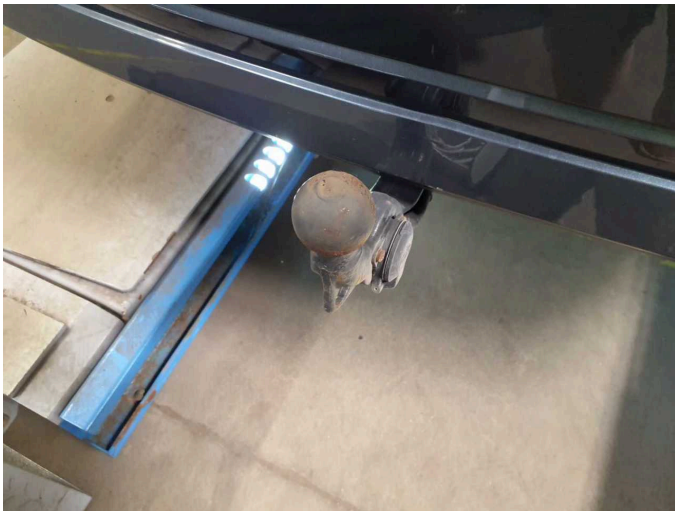


Figure 33: Misc.



Figure 34: Misc.



Figure 35: Misc.



Damage 1: Wing mirror - left side: Cap - Scratch(es) - Smart repair



**Damage 1:** Wing mirror - left side: Cap - Scratch(es) - Smart repair



**Damage 2:** Bonnet: Bonnet - dent(s) - Smooth repair work



**Damage 2:** Bonnet: Bonnet - dent(s) - Smooth repair work



**Damage 3:** Door - front right side: Door handle - outside - Scratch(es) - Smart repair



**Damage 3:** Door - front right side: Door handle - outside - Scratch(es) - Smart repair



**Damage 4:** Door - front left side: Door edge - Scratch(es) - Smart repair



**Damage 4:** Door - front left side: Door edge - Scratch(es) - Smart repair



**Damage 5:** Wheel / tyres: Alloy rim - front right side - Scratch(es) - Loss in value



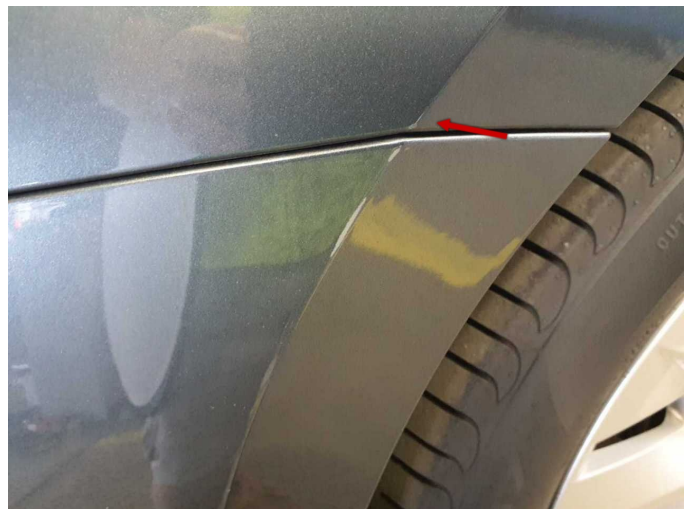
**Damage 5:** Wheel / tyres: Alloy rim - front right side - Scratch(es) - Loss in value



**Damage 6:** Mudguard - left side: Mudguard - left side - Scratch(es) - Paint



**Damage 6:** Mudguard - left side: Mudguard - left side - Scratch(es) - Paint



**Damage 6:** Mudguard - left side: Mudguard - left side - Scratch(es) - Paint



**Damage 7:** Door - rear right side: Door - Scratched - Paint



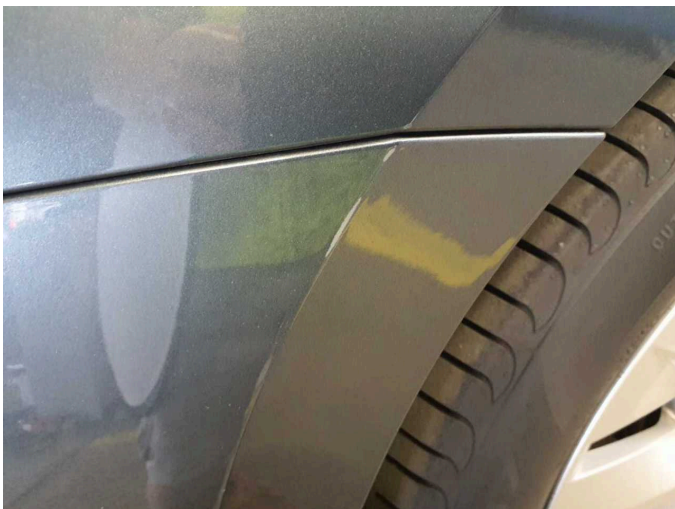
**Damage 7:** Door - rear right side: Door - Scratched - Paint



**Damage 7:** Door - rear right side: Door - Scratched - Paint



**Damage 8:** Front bumper: Front bumper - Scratched - Paint



**Damage 8:** Front bumper: Front bumper - Scratched - Paint



**Damage 8:** Front bumper: Front bumper - Scratched - Paint



**Damage 9:** Side panel - rear right side: Side panel - Dent / paintcoat damage - Repair and paint



**Damage 9:** Side panel - rear right side: Side panel - Dent / paintcoat damage - Repair and paint



**Damage 9:** Side panel - rear right side: Side panel - Dent / paintcoat damage - Repair and paint



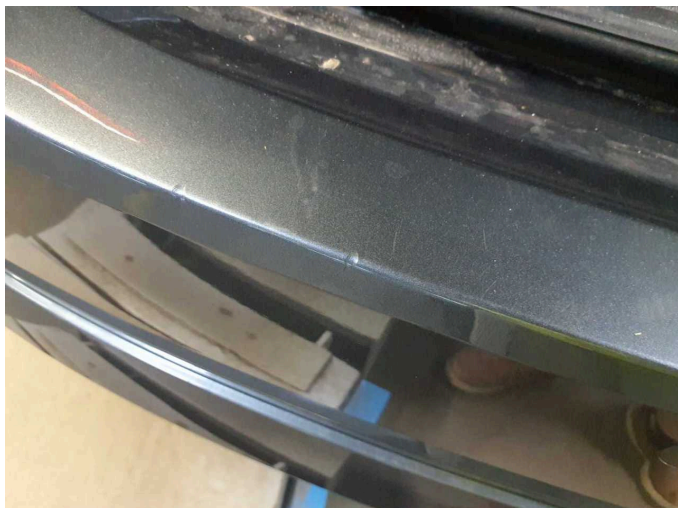
**Damage 10:** Rear bumper: Rear bumper - Dent / paintcoat damage - Repair and paint



**Damage 10:** Rear bumper: Rear bumper - Dent / paintcoat damage - Repair and paint



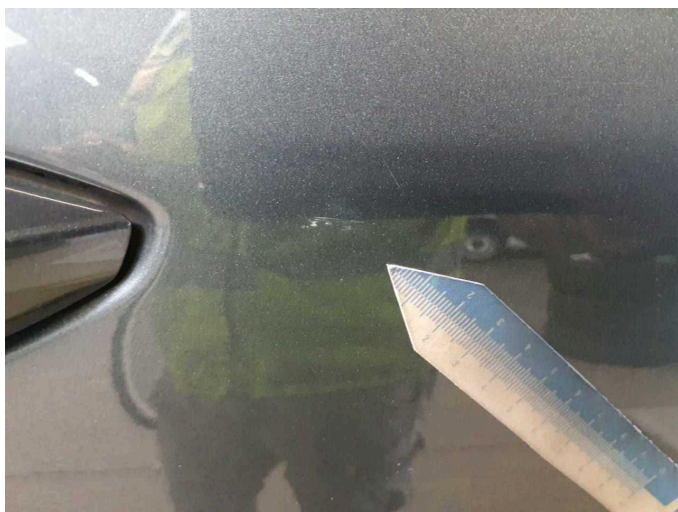
**Damage 10:** Rear bumper: Rear bumper - Dent / paintcoat damage - Repair and paint



**Damage 10:** Rear bumper: Rear bumper - Dent / paintcoat damage - Repair and paint



**Wear and tear 1:** Door - front right side: Door - Scratch(es) - No deduction



**Wear and tear 1:** Door - front right side: Door - Scratch(es) - No deduction



# Wartungshistorie

(gemäß Auftraggeber Informationen)

Fahrgestellnummer: TMBJG7NX9MY047226  
Hersteller / Modell: SKODA SKODA Octavia Combi 2.0 TDI First Edition

Datum	KM-Stand	Beschreibung
20.06.2025	109.139	Bremsflüssigkeit; Bremsflüssigkeit ern; Kraftstofffilter ern; Luftfiltereinsatz ern; Motoröl b. Wartung; Ölfilter ern; Regelwartungsdienst; Systemtest/ Eigendiagnose; Wartung Sonstiges
15.03.2024	81.561	Bremse Sonstiges; Bremsklötze hinten; Bremsscheiben hinten; Motoröl b. Wartung; Ölfilter ern; Regelwartungsdienst; Wartung Sonstiges
16.11.2023	73.560	AU
21.07.2023	57.661	Wartung Sonstiges
02.03.2023	53.983	Bremsflüssigkeit ern; Bremsscheiben + Klötze v; Motoröl b. Wartung; Regelwartungsdienst
28.01.2022	25.480	Kleine Inspektion; Motoröl b. Wartung