



Expertise

Protocol number: 41228960
Order No. / Reference: 25001831
Inspection date: 26 Aug 2025

Manufacturer: Skoda	Model: Octavia Combi 2.0 TDI First Edition
VIN: TMBJG7NX1MY026452	



Vehicle details	
Manufacturer / Type / Model / Equipment	
Skoda Octavia Combi 2.0 TDI First Edition	
Vehicle Identification number	TMBJG7NX1MY026452
Mileage (Read)	116,109 km
First registration	14 Oct 2020
Number of holders	1
Power / Engine displacement	85 kw / 1,968 ccm
Fuel type / Cylinder	Diesel / 4
Gearbox / Number of gears	Manual / 6
Type of drive	Front drive
Type of vehicle	Station wagon
Colour / colour code	Reflexsilber metallic (A7W)
Doors / Seats	5 / 5
Upholstery type	Cloth
Colour of upholstery	Black-Anthracite



Vehicle details

Maintenance booklet / proof	digital proof / complete	Next maintenance in	900 km
Last maintenance on / at	04/2024 at 86,982 km		
Key is / should be	2 / 2	FZG documents	ZB#2 (B) was available (copy), ZB#1 (S) was not available
		Letter No.	FX191249
Previous damage / Accident	Detectable	Repainting	None detectable
Inspection conditions	sufficient	Lifting equipment / pit	yes
Test drive	Not performed	Engine function test	Performed
Manufacturer key number/ type code number	8004 / AWK 00013		
Emission standard	EURO6;WLTP;DG;PI/CI; M, N1 I	Fine dust sticker	
Permitted total weight	1,940 kg	Empty weight	

Tyres

Mounted tyres

#	Tyre size	Type of tyre	Manufacturer	Tread depth
1)	205/55 R17 91V	Summer tyres on Light alloy	Continental	5mm / 5mm
2)	205/55 R17 91V	Summer tyres on Light alloy	Continental	4mm / 4mm

Additional tyres

#	Tyre size	Type of tyre	Manufacturer	Tread depth
1)	205/60 R16 92H	Winter tyres on Light alloy	Continental	5mm / 5mm
2)	205/60 R16 92H	Winter tyres on Light alloy	Continental	6mm / 6mm

Replacement

Typ	Tyre size	Type of tyre	Manufacturer	Tread depth
N	125/70 R18 99M	Summer tyres on Steel	Sonstige	4 mm

Legend: Tread depth information for tires on the left is in the first place, for tires on the right is in the second place on the axle in the direction of travel

Equipment

Standard equipment

- Shelves
- Airbag, driver's knee airbag
- Airbag, front side airbags
- Traction control (ASR)
- Automatically dimming exterior mirror (driver's side)
- Exterior mirrors with memory function
- Heated windscreen washer nozzles including 5l washer fluid reservoir
- Grey headliner
- diesel particulate filter
- tachometer
- Electronic parking brake
- Electronic Stabilization Control (ESC)
- Driving profile selection
- Front radar assistant including city emergency braking function with person detection
- Transmission: 6-speed manual transmission
- Green tec: Automatic start/stop system including brake energy recovery
- Rear window wiper including windscreen washer system
- ISOFIX preparations on the front passenger seat and the outer rear seats including top tether anchorage
- Electronic child lock
- Removable trunk cover
- LED fog lights
- LED rear lights
- Remote release of the rear seat backrests in the trunk
- Steering wheel: Leather steering wheel with multifunction buttons
- Front center armrest, including storage compartment
- Engine drag torque control (MSR)
- Parking sensors front and rear
- Upholstery: Cloth
- Radio accessories: 8 speakers
- Radio accessories: voice control
- Tire pressure monitoring
- Wheels: 17" Rotare AERO alloy wheels
- Seat belts
- Seats: Heated front seats
- Seats: Height-adjustable driver and passenger seats
- Seats: Rear seat backrest 60:40 split folding
- SKODA Infotainment Online
- Lane keeping assistant (Lane Assist)
- 12-V socket in the trunk
- Telephone: Phonebox with inductive charging function (connection via the external antenna)
- Bluetooth hands-free phone system
- Immobiliser
- Airbag, driver and passenger
- Airbag, head airbags
- Anti-lock braking system (ABS)
- Dashboard center section with fabric cover
- Exterior mirrors electrically adjustable and heated
- Exterior mirrors, electrically folding
- hill start assist including auto-hold function
- Hydraulic brake assist (HBA)
- Roof rails, anodized
- Digital instrument cluster (Virtual Cockpit) 10.2"
- Third brake light
- Electronic transverse differential lock (XDS+)
- Driving light assistant
- Electric windows front and rear, including anti-pinch protection and child safety lock
- Cruise control system
- Tinted windows
- Taillights in crystal glass look and animated indicators
- Heated rear window
- Interior mirror automatically dimming
- KESSY (Keyless Access and Start-Stop System)
- Child safety locks on the rear doors
- Climatronic air conditioning (2 zones)
- Headrests (5) front and rear height adjustable
- LED ambient lighting
- LED headlights with LED daytime running lights
- Steering wheel: height and length adjustable
- Manual headlight range adjustment
- Rear center armrest with cup holders and through-loading option
- Columbus navigation system with capacitive 10" color display
- Radio accessories: 2 USB-C ports at the front
- Radio accessories: Digital radio reception DAB+
- Rain sensor
- Tire mobility set
- Power steering, electromechanical
- Safety lights in the front side doors
- Seats: Electrically adjustable front seats with memory function
- SKODA Care Connect
- Speed limiter
- Lane change and rear traffic assistant as well as exit warning
- Phone: SmartLink (MirrorLink, Apple CarPlay, Android Auto)
- Phone: Wireless SmartLink for Apple CarPlay
- Lashing eyes in the trunk
- Central locking including radio remote control integrated in the key and EASY Start



Extra equipment

- Luggage net partition
- Paint finish: metallic
- Trailer coupling, pivoting including trailer stabilization and adapter
- Comfort opening including electric tailgate operation
- Radio accessories: CANTON sound system and 18" steel spare wheel (12 speakers (10 speakers, 1 central speaker, 1 subwoofer in the spare wheel well) - 18" steel spare wheel (125/70 R18 tires) including jack and wheel wrench)

Brief expert findings

Documents submitted	At the time of the inspection, the registration certificate Part 2 (letter) was available, but the registration certificate Part 1 (certificate) was not. (Copy)
VIN comparison	The vehicle identification number (VIN) was read from the vehicle and its conformity with the submitted documents was verified during the inspection by the undersigned.
Inspection	The inspection conditions were sufficient for the assessment of the vehicle. Lifting equipment and a pit were available for examining the vehicle.
Test drive	No test drive/maneuvering was carried out during the inspection of the vehicle.
Engine function test	An engine test run was performed.

Value reducing factors

No.	Component group	Description
1	Side panel - rear left side	Sill - Scratch(es) - Smart repair
2	Side panel - rear right side	Side panel - dent(s) - Smooth repair work
3	Roof	Roof rail - right side - dent(s) - Smooth repair work
4	Side panel - rear left side	Side panel - dent(s) - Smooth repair work
5	Rear bumper	Rear bumper (Leicht eingedrückt) - Scratched - Repair and paint
6	Front bumper	Front bumper - Scratched - Paint
7	Bonnet	Bonnet - Corrosion - Paint

Missing parts

Description

Equipment - Umbrella

Previous damages

No.	Previous damage	Extent of damage (Net)
1	Rear, Provided by user / customer, from 12 Jul 2021	3.097,36 €
2	Side - left, Provided by user / customer, from 28 Mar 2022	4.665,47 €



Order/Scope of order

The order was placed to prepare a sales report for the vehicle described. This includes the following:

- Description of core relevant information about the vehicle
- Documentation of equipment features
(Delivery by third-party service providers)
- Documentation of damage, defects, missing parts
- Documentation of previous damage, unrepaired previous damage, repainting
- a brief visual or functional inspection of the equipment details if possible.
(Functional tests of driver assistance systems are not included in the scope of services!)
- a photo documentation of the vehicle

Basis for the order

This product is based on the Alphabet Fuhrpark GmbH guidelines for vehicle returns and valuations. The expert makes the explicit findings in each individual case objectively within the framework of the specified standards based on his or her own expertise.

The vehicle inspection takes place in a disassembled state.

Damage or defects that can only be detected during disassembly/diagnosis work or through advanced knowledge remain within the scope of the prognosis risk. An extended risk exists for concealed defects caused by fraudulent deception and not identifiable by the expert.

Damage or defects resulting from normal use or wear and tear of the vehicle will be accepted according to the applicable standard.

There was no explicit identification or monetary consideration of the expected features within the product.

Features which in their nature and severity slightly exceed normal use but do not constitute unacceptable damage will be documented and identified under signs of use if necessary.

Damage or defects which, according to the underlying standard, can no longer be attributed to normal use or wear and tear are listed in the product under "Depreciating Factors".

Depending on the product specification, a monetary ID can be provided. If this takes place, the costs can be 100% d or pro rata depending on the vehicle's age and mileage.

Previous damages

According to available information previous damages were repaired at the vehicle. Traces of repairs, which allow conclusions about the area of repair, were not recognizable during the inspection.

Comments

Das Fahrzeug befand sich zum Besichtigungszeitpunkt in beschädigten, nicht demontierten Zustand. Schadenausweitung möglich, Zusatzkosten können entstehen.

Der Winterradsatz ist nicht Bestandteil der vorliegenden Fahrzeugausstattung.



Figure 1: Diagonal front (left)



Figure 2: Diagonal front (right)



Figure 3: Diagonal rear (left)



Figure 4: Diagonal rear (right)



Figure 5: Interior - front



Figure 6: Interior - rear



Figure 7: Instrument cluster



Figure 8: Instrument panel



Figure 9: interior 360° view ([Online link](#))



Figure 10: Cargo area



Figure 11: VIN



Figure 12: Mounted tyres

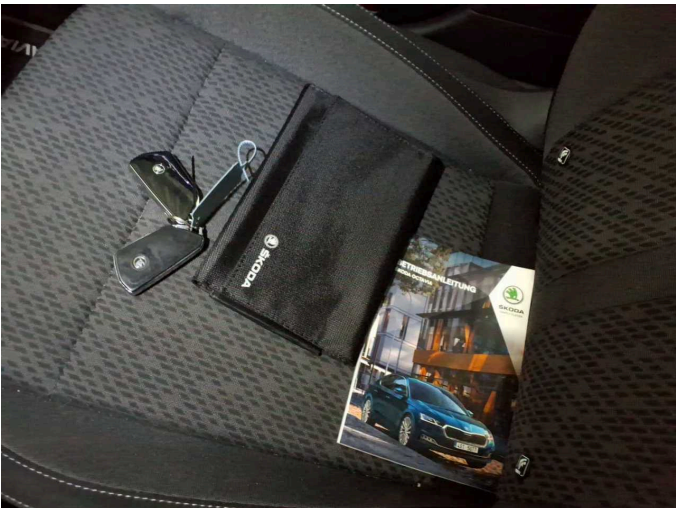


Figure 13: Documents



Figure 14: Additional tyres



Figure 15: Navigation



Figure 16: Misc.



Figure 17: Misc.

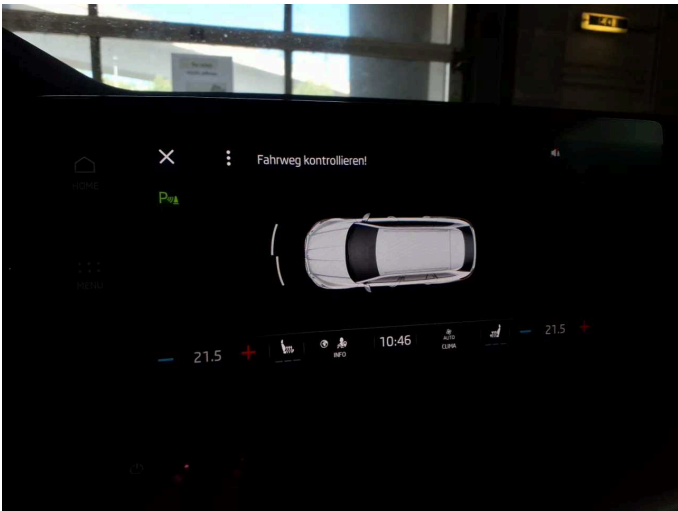


Figure 18: Misc.



Figure 19: Misc.



Figure 20: Misc.



Figure 21: Misc.



Figure 22: Misc.



Figure 23: Misc.



Figure 24: Misc.



Figure 25: Misc.

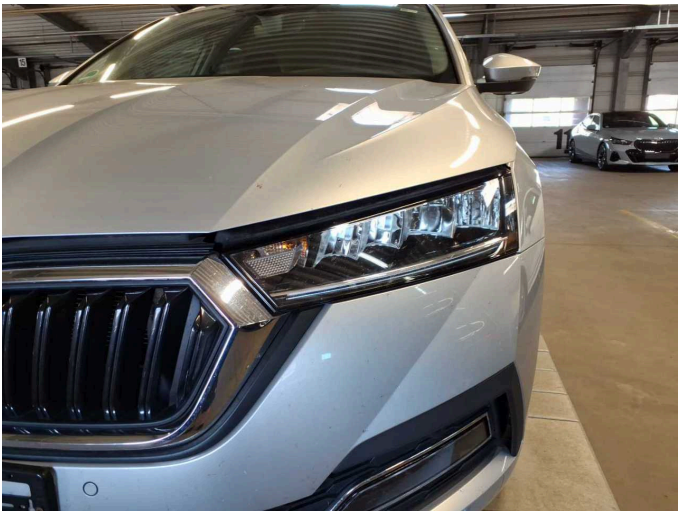


Figure 26: Misc.



Figure 27: Misc.



Figure 28: Misc.



Figure 29: Misc.



Figure 30: Misc.



Figure 31: Misc.

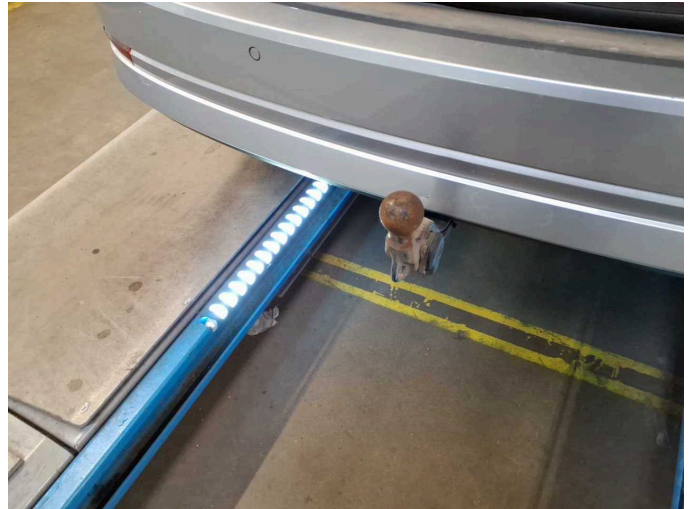
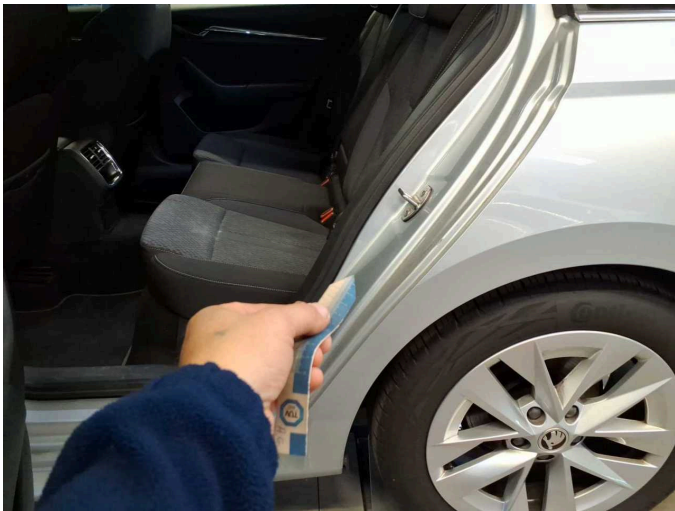


Figure 32: Misc.



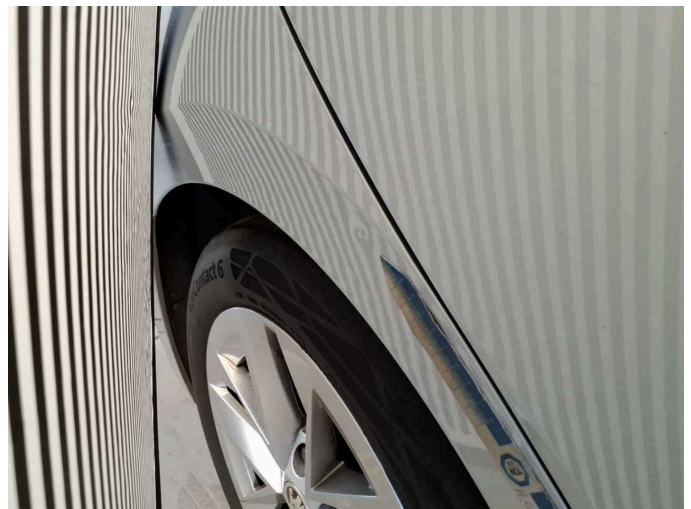
Damage 1: Side panel - rear left side: Sill - Scratch(es) - Smart repair



Damage 1: Side panel - rear left side: Sill - Scratch(es) - Smart repair



Damage 2: Side panel - rear right side: Side panel - dent(s) - Smooth repair work



Damage 2: Side panel - rear right side: Side panel - dent(s) - Smooth repair work



Damage 3: Roof: Roof rail - right side - dent(s) - Smooth repair work



Damage 3: Roof: Roof rail - right side - dent(s) - Smooth repair work



Damage 4: Side panel - rear left side: Side panel - dent(s) - Smooth repair work



Damage 4: Side panel - rear left side: Side panel - dent(s) - Smooth repair work



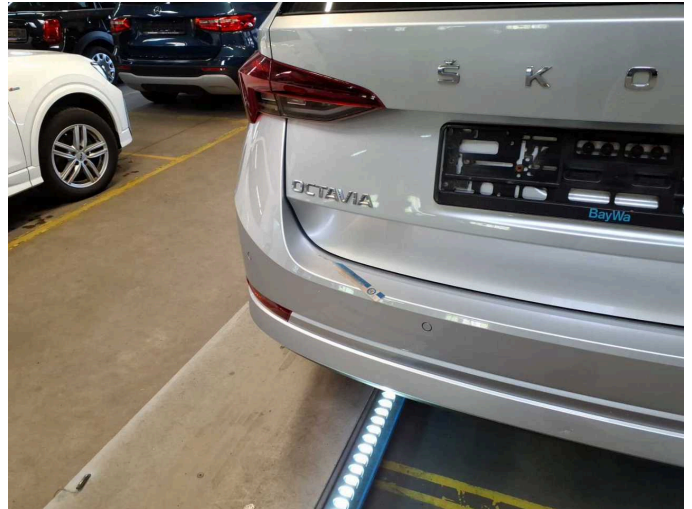
Damage 5: Rear bumper: Rear bumper (Leicht eingedrückt) - Scratched - Repair and paint



Damage 5: Rear bumper: Rear bumper (Leicht eingedrückt) - Scratched - Repair and paint



Damage 5: Rear bumper: Rear bumper (Leicht eingedrückt) - Scratched - Repair and paint



Damage 5: Rear bumper: Rear bumper (Leicht eingedrückt) - Scratched - Repair and paint



Damage 5: Rear bumper: Rear bumper (Leicht eingedrückt) - Scratched - Repair and paint



Damage 6: Front bumper: Front bumper - Scratched - Paint



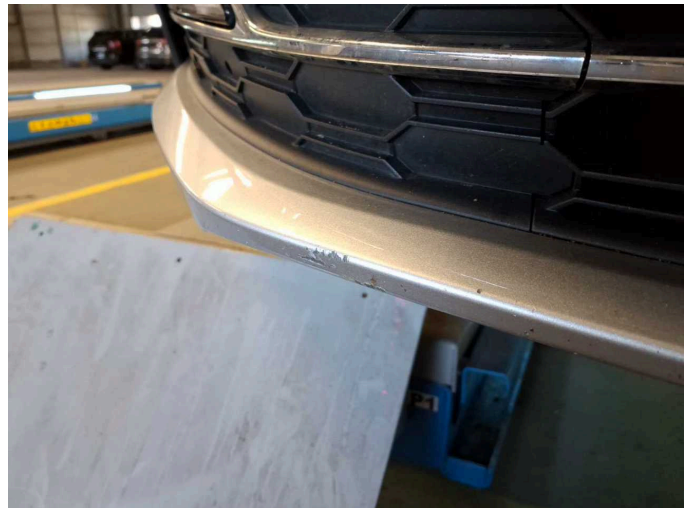
Damage 6: Front bumper: Front bumper - Scratched - Paint



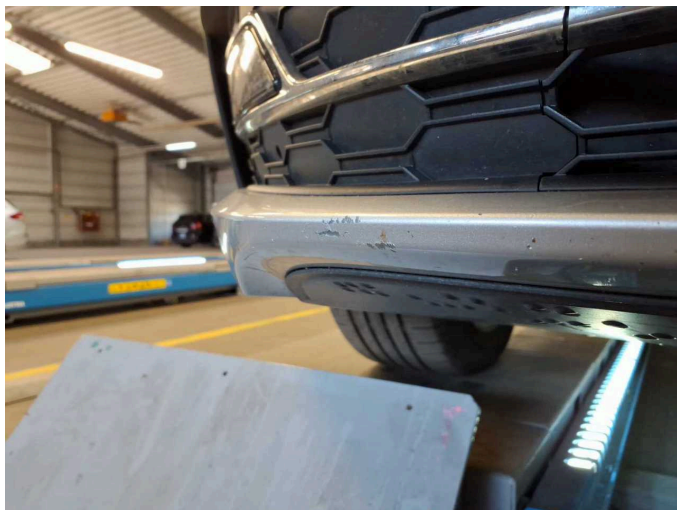
Damage 6: Front bumper: Front bumper - Scratched - Paint



Damage 6: Front bumper: Front bumper - Scratched - Paint



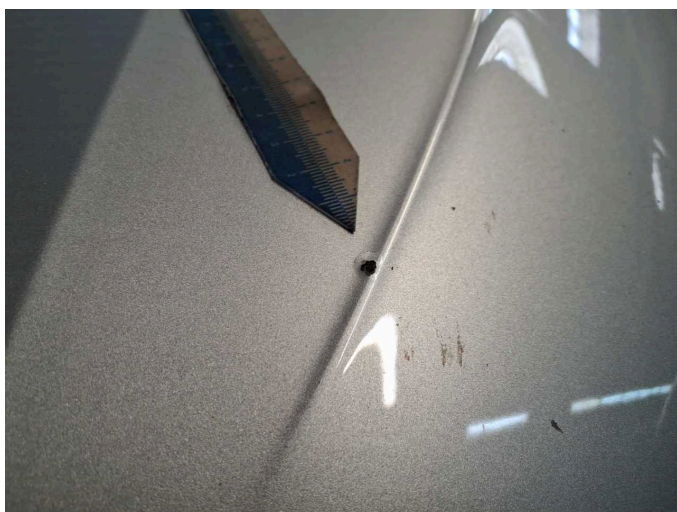
Damage 6: Front bumper: Front bumper - Scratched - Paint



Damage 6: Front bumper: Front bumper - Scratched - Paint



Damage 7: Bonnet: Bonnet - Corrosion - Paint



Damage 7: Bonnet: Bonnet - Corrosion - Paint



Missing part 1: Equipment: Umbrella - Missing - Replace



Wartungshistorie

(gemäß Auftraggeber Informationen)

Fahrgestellnummer: TMBJG7NX1MY026452
Hersteller / Modell: SKODA SKODA Octavia Combi 2.0 TDI First Edition

Datum	KM-Stand	Beschreibung
09.04.2024	86.982	Kraftstofffilter ern; Luftfiltereinsatz ern; Motoröl b. Wartung; Ölfilter ern; Regelwartungsdienst; Systemtest/Eigendiagnose; Wartung Sonstiges
08.03.2024	84.253	Keilrippenriemen; Reparatur Sonstiges; Systemtest/Eigendiagnose; Wartung Sonstiges; Zahnriemen/Steuerkett ern
09.10.2023	71.055	AU
28.04.2023	58.640	Bremse Sonstiges; Bremsklötze hinten; Bremsklötze vorne; Bremsscheiben hinten; Bremsscheiben vorne; Motoröl b. Wartung; Ölfilter ern; Regelwartungsdienst; Wartung Sonstiges
10.11.2022	45.144	Bremsflüssigkeit; Bremsflüssigkeit ern; Reparatur Sonstiges; Systemtest/Eigendiagnose
20.04.2022	30.571	Motoröl b. Wartung; Ölfilter ern; Regelwartungsdienst; Wartung Sonstiges