



Expertise

Protocol number: 41449876  
Order No. / Reference: 25200889  
Inspection date: 9 Sept 2025

Manufacturer: Skoda	Model: Karoq 2.0 TDI SCR DSG Clever
VIN: TMBJF7NU0M5039283	



Vehicle details	
Manufacturer / Type / Model / Equipment	
Skoda Karoq 2.0 TDI SCR DSG Clever	
Vehicle Identification number	TMBJF7NU0M5039283
Mileage (Read)	200,239 km
First registration	6 Apr 2021
Number of holders	1
Next periodical technical inspection	05/2026
(Report not on hand)	
Power / Engine displacement	85 kw / 1,968 ccm
Fuel type / Cylinder	Diesel / 4
Gearbox / Number of gears	Automatic / 7
Type of drive	Front drive
Type of vehicle	SUV
Colour / colour code	Brillant-Silber Metallic
Doors / Seats	5 / 5
Upholstery type	Cloth
Colour of upholstery	Black-Grey



## Vehicle details

<b>Maintenance booklet / proof</b>	digital proof / complete	<b>Next maintenance in</b>	11,800 km
<b>Last maintenance on / at</b>	05/2025 at 182,043 km		
<b>Key is / should be</b>	2 / 2	<b>FZG documents</b>	ZB#2 (B) was available (copy), ZB#1 (S) was not available
		<b>Letter No.</b>	GA520690
<b>Previous damage / Accident</b>	None detectable	<b>Repainting</b>	None detectable
<b>Inspection conditions</b>	sufficient	<b>Lifting equipment / pit</b>	yes
<b>Test drive</b>	Not performed	<b>Engine function test</b>	Performed
<b>Manufacturer key number/ type code number</b>	8004 / AVU 00180		
<b>Emission standard</b>	EURO6;WLTP;AP;PI/CI; M, N1 I	<b>Fine dust sticker</b>	
<b>Permitted total weight</b>	2,005 kg	<b>Empty weight</b>	

## Tyres

### Mounted tyres

#	Tyre size	Type of tyre	Manufacturer	Tread depth
1)	215/50 R16 99H	Winter tyres on Light alloy	Bridgestone	6mm / 6mm
2)	215/50 R16 99H	Winter tyres on Light alloy	Bridgestone	5mm / 5mm

### Additional tyres

#	Tyre size	Type of tyre	Manufacturer	Tread depth
1)	215/55 R17 98Y	Summer tyres on Light alloy	Pirelli	4mm / 4mm
2)	215/55 R17 98Y	Summer tyres on Light alloy	Pirelli	5mm / 5mm

### Replacement

Typ	Tyre size	Type of tyre	Manufacturer	Tread depth
	Tirefit	Expiration date 01/2025		

**Legend:** Tread depth information for tires on the left is in the first place, for tires on the right is in the second place on the axle in the direction of travel

## Equipment

### Standard equipment

- Storage compartment on the left wheel house
- Storage compartments behind the wheel arch in the trunk
- Removable waste bin for the door panel
- Airbag, driver's knee airbag
- Airbag, front side airbags
- Extended warranty for 3 years, max. 50,000 km
- Traction control (ASR)
- Electrically adjustable and heated exterior mirrors with integrated side indicators
- Brake assist, hydraulic
- Cargo elements in the trunk
- Clever decorative inlay
- diesel particulate filter
- Third brake light
- eCall
- Electronic transverse differential lock (XDS+)
- Headlight assistant and rain sensor
- Front radar assistant including city emergency braking function with person detection
- Transmission: 7-speed dual-clutch transmission (DSG)
- Green tec (automatic start/stop and brake energy recovery)
- Heated rear window
- Interior mirror dimming, automatic
- ISOFIX preparation on the outer rear seats
- Electric child safety lock (door opening)
- reversible trunk mat
- Headrests height adjustable front and rear
- LED taillights in crystal glass look
- Rear center armrest with cup holders and through-loading option
- MSR (engine drag torque control)
- Net program in the trunk
- Rear parking sensors
- Radio: Bolero infotainment system
- Radio accessories: Digital radio reception DAB+
- Radio accessories: Wireless SmartLink (Apple CarPlay)
- Tire pressure monitoring
- Rear seat backrest 60:40 split folding
- Power steering, electromechanical
- Seats: Heated front and outer rear seats
- Seats: Front seats, height adjustable
- Speed limiter
- Bumpers partially painted in body color
- Door sill plates front and rear
- Immobiliser
- Storage compartment on the dashboard Closed
- Shelves
- Airbag, driver and passenger
- Airbag, head airbags
- Allergen filter
- Anti-lock braking system (ABS)
- Electrically folding exterior mirrors including interior and exterior mirrors with automatic dimming
- Hill start assist
- Care Connect: Proactive Services (10-year term)
- Roof rails, silver
- Anti-theft alarm system
- tachometer
- EASY START, keyless start-stop system
- Electronic parking brake including auto-hold function
- ESC Electronic Stabilization Control
- Electric windows front and rear
- Floor mats
- Cruise control system
- Tinted windows
- Illuminated glove compartment
- Rear window wiper Aero including windscreen washer system
- Kessy - keyless entry and start-stop system
- Climatronic air conditioning (2 zones)
- Trunk cover, fixed
- LED headlights with LED daytime running lights
- Steering wheel: Leather steering wheel with multifunction buttons
- Front center armrest, including storage compartment
- Multifunctional display with Maxi-Dot display
- Package: LED lighting package
- Upholstery: Cloth
- Radio accessories: 8 speakers
- Radio accessories: USB port in the center console
- Tire mobility set
- Wheels: 17" alloy wheels "Aronia AERO Platinum"
- Heated windscreen washer nozzles, front
- Seat belts Karoq
- Seats: Adjustable lumbar supports in the front seats
- Skoda Care Connect
- 12V socket - in the center console and in the trunk
- SUNSET
- Lashing eyes in the trunk
- Central locking with radio remote control

### Extra equipment



- |  |  |
|--|--|
| <ul style="list-style-type: none"> <li>• Deselecting the standard extended warranty</li> <li>• Swiveling trailer coupling with electric release (including trailer stabilization)</li> <li>• High beam assistant</li> <li>• Heated steering wheel (DSG)</li> <li>• Parking sensors front &amp; rear</li> <li>• Lane keeping (Lane Assist), lane change (Blind-Spot Detection) and rear traffic exit assistant (DSG) (with adaptive lane guidance and traffic jam and emergency assistant)</li> </ul> | <ul style="list-style-type: none"> <li>• Adaptive Cruise Control ACC (control range up to 210 km/h) (replaces cruise control)</li> <li>• Heated windshield</li> <li>• Paint finish: metallic</li> <li>• Package: Business Amundsen (Clever) (Dynamic radio navigation system Amundsen - Color multifunction display in the instrument cluster - Fatigue detection - Luggage net partition - Infotainment Online (3-year term))</li> <li>• Power socket: 230-volt socket and 2 USB ports (on the back of the front center armrest)</li> </ul> |
|--|--|

## Brief expert findings

Documents submitted	At the time of the inspection, the registration certificate Part 2 (letter) was available, but the registration certificate Part 1 (certificate) was not. (Copy)
VIN comparison	The vehicle identification number (VIN) was read from the vehicle and its conformity with the submitted documents was verified during the inspection by the undersigned.
Inspection	The inspection conditions were sufficient for the assessment of the vehicle. Lifting equipment and a pit were available for examining the vehicle.
Test drive	No test drive/maneuvering was carried out during the inspection of the vehicle.
Engine function test	An engine test run was performed.

## Value reducing factors

No.	Component group	Description
1	Equipment	Tirefit filler - Expired - Replace
2	Rear bumper	Spoiler - Scratched - Loss in value
3	Wheel / tyres	Alloy rim - front right side (Materialabtrag) - Damaged - Replace
4	Door - rear left side	Door - Dent / paintcoat damage - Repair and paint

## Wear and tear

No.	Component group	Description
1	Front bumper	Front bumper - Stone chips - No deduction
2	Wheel / tyres	Alloy rim - rear left side - Scratch(es) - No deduction
3	Bonnet	Bonnet - Stone chips - No deduction
4	Side panel - rear left side	Side panel - Scratch(es) - No deduction
5	Door - rear right side	Door - Scratch(es) - No deduction
6	Vehicle glazing	Windscreen with lane departure assistant (ohne Rissbildung) - Stone chips - No deduction

The vehicle shows signs of wear commensurate with its age and use.



## Order/Scope of order

The order was placed to prepare a sales report for the vehicle described. This includes the following:

- Description of core relevant information about the vehicle
- Documentation of equipment features  
(*Delivery by third-party service providers*)
- Documentation of damage, defects, missing parts
- Documentation of previous damage, unrepaired previous damage, repainting
- a brief visual or functional inspection of the equipment details if possible.  
(*Functional tests of driver assistance systems are not included in the scope of services!*)
- a photo documentation of the vehicle

## Basis for the order

This product is based on the Alphabet Fuhrpark GmbH guidelines for vehicle returns and valuations. The expert makes the explicit findings in each individual case objectively within the framework of the specified standards based on his or her own expertise.

The vehicle inspection takes place in a disassembled state.

Damage or defects that can only be detected during disassembly/diagnosis work or through advanced knowledge remain within the scope of the prognosis risk. An extended risk exists for concealed defects caused by fraudulent deception and not identifiable by the expert.

Damage or defects resulting from normal use or wear and tear of the vehicle will be accepted according to the applicable standard.

There was no explicit identification or monetary consideration of the expected features within the product.

Features which in their nature and severity slightly exceed normal use but do not constitute unacceptable damage will be documented and identified under signs of use if necessary.

Damage or defects which, according to the underlying standard, can no longer be attributed to normal use or wear and tear are listed in the product under "Depreciating Factors".

Depending on the product specification, a monetary ID can be provided. If this takes place, the costs can be 100% d or pro rata depending on the vehicle's age and mileage.

## Previous damages

Apparently, no repaired previous damage could be found on the vehicle.

## Comments

- Winterradsatz ist kein Bestandteil des Auslieferungsumfangs





Figure 1: Diagonal front (left)



Figure 2: Diagonal front (right)



Figure 3: Diagonal rear (left)



Figure 4: Diagonal rear (right)



Figure 5: Interior - front



Figure 6: Interior - rear



Figure 7: Instrument cluster



Figure 8: Instrument panel



Figure 9: Interior 360° view ([Online link](#))



Figure 10: Cargo area

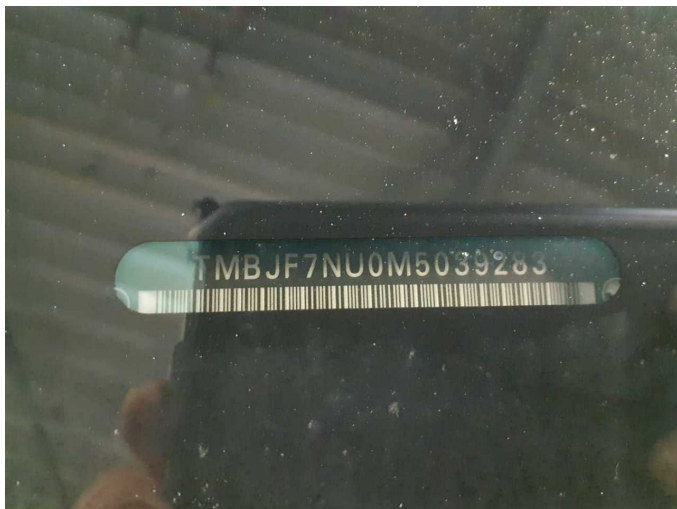


Figure 11: VIN



Figure 12: Mounted tyres



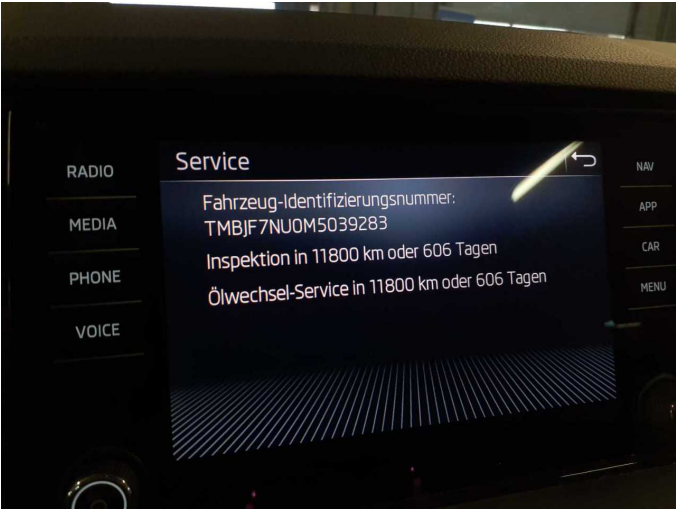


Figure 13: Documents

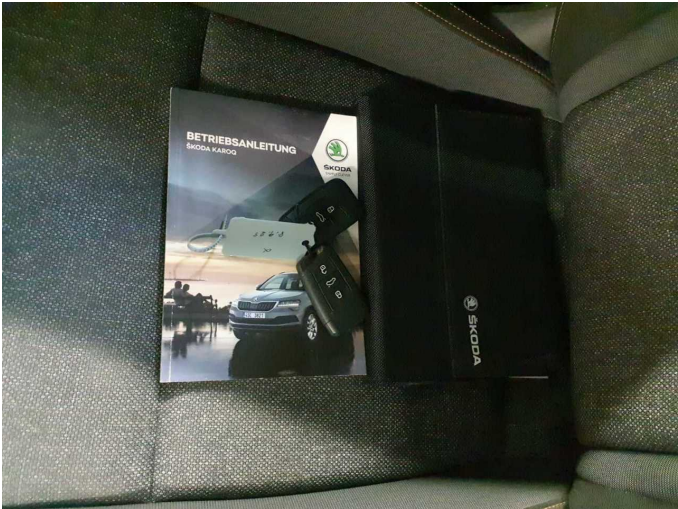


Figure 14: Documents



Figure 15: Additional tyres



Figure 16: Navigation



Figure 17: Misc.



Figure 18: Misc.





Figure 19: Misc.



Figure 20: Misc.



Figure 21: Misc.



Figure 22: Misc.



Figure 23: Misc.

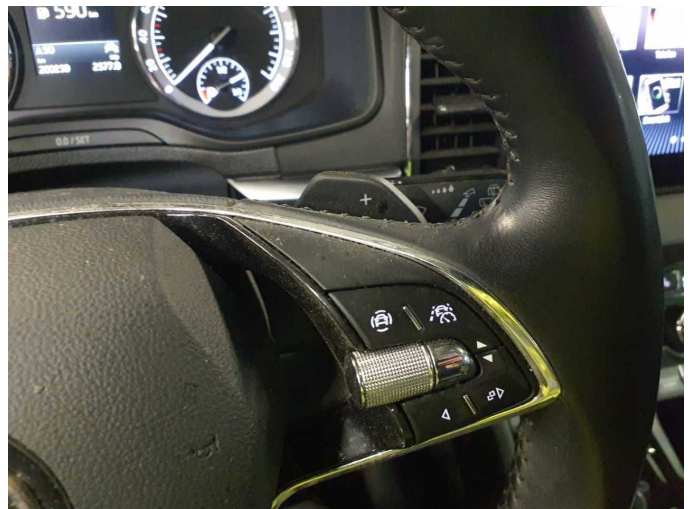


Figure 24: Misc.



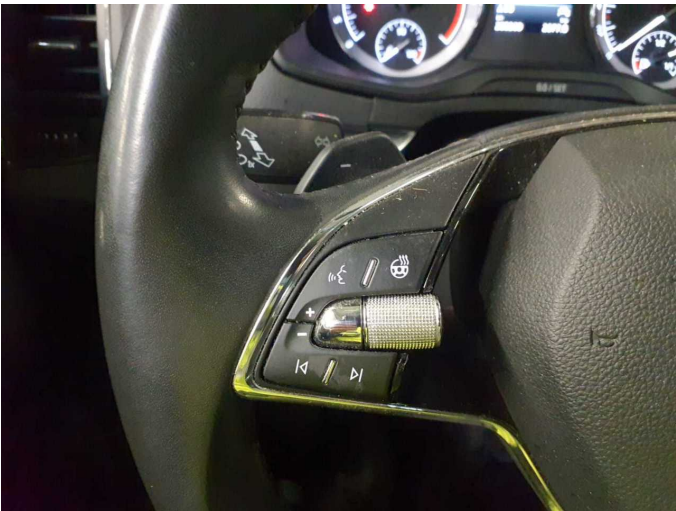


Figure 25: Misc.



Figure 26: Misc.



Figure 27: Misc.



Figure 28: Misc.



Figure 29: Misc.

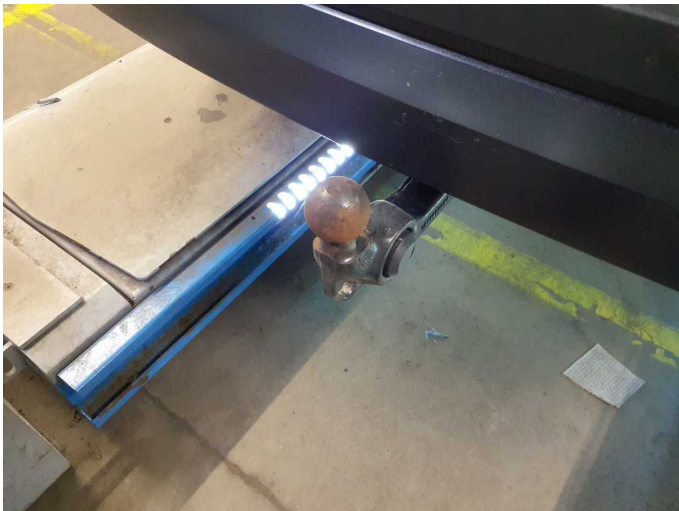


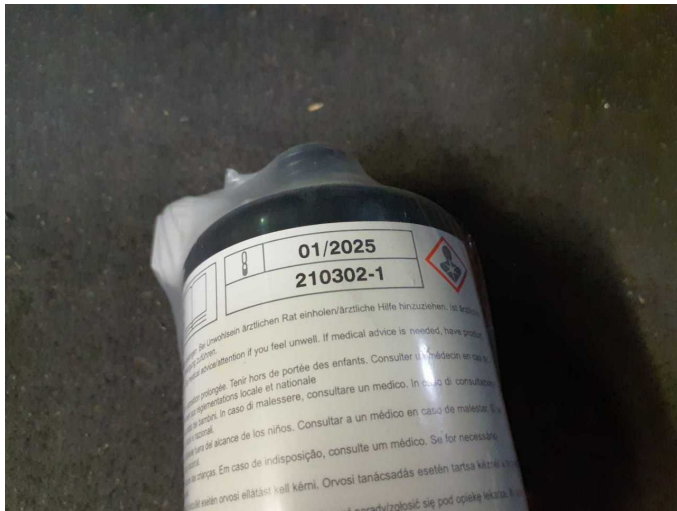
Figure 30: Misc.



**Figure 31:** Misc.



**Figure 32:** Misc.



**Damage 1:** Equipment: Tirefit filler - Expired - Replace



**Damage 2:** Rear bumper: Spoiler - Scratched - Loss in value



**Damage 2:** Rear bumper: Spoiler - Scratched - Loss in value



**Damage 3:** Wheel / tyres: Alloy rim - front right side (Materialabtrag) - Damaged - Replace





**Damage 3:** Wheel / tyres: Alloy rim - front right side (Materialabtrag) - Damaged - Replace



**Damage 4:** Door - rear left side: Door - Dent / paintcoat damage - Repair and paint



**Damage 4:** Door - rear left side: Door - Dent / paintcoat damage - Repair and paint



**Damage 4:** Door - rear left side: Door - Dent / paintcoat damage - Repair and paint



**Wear and tear 4:** Side panel - rear left side: Side panel - Scratch(es) - No deduction



**Wear and tear 4:** Side panel - rear left side: Side panel - Scratch(es) - No deduction



**Wear and tear 5:** Door - rear right side: Door - Scratch(es) - No deduction



**Wear and tear 5:** Door - rear right side: Door - Scratch(es) - No deduction



**Wear and tear 6:** Vehicle glazing: Windscreen with lane departure assistant (ohne Rissbildung) - Stone chips - No deduction



**Wear and tear 6:** Vehicle glazing: Windscreen with lane departure assistant (ohne Rissbildung) - Stone chips - No deduction



**Wear and tear 6:** Vehicle glazing: Windscreen with lane departure assistant (ohne Rissbildung) - Stone chips - No deduction



# Wartungshistorie

(gemäß Auftraggeber Informationen)

Fahrgestellnummer: TMBJF7NU0M5039283  
Hersteller / Modell: SKODA SKODA Karoq 2.0 TDI SCR DSG Clever

Datum	KM-Stand	Beschreibung
03.07.2025	190.812	Bremse Sonstiges; Bremsklötze hinten; Bremsscheiben hinten
08.05.2025	182.043	Bremsflüssigkeit; Bremsflüssigkeit ern; Kraftstofffilter ern; Luftfiltereinsatz ern; Motoröl b. Wartung; Ölfilter ern; Regelwartungsdienst; Systemtest/ Eigendiagnose; Wartung Sonstiges
21.02.2025	168.930	Bremse Sonstiges; Bremsklötze vorne; Bremsscheiben vorne
30.08.2024	143.284	Motoröl b. Wartung; Ölfilter ern; Regelwartungsdienst; Wartung Sonstiges
23.08.2024	141.229	Bremse Sonstiges; Bremsklötze hinten; Bremsscheiben hinten
17.05.2024	125.451	HU + AU
28.11.2023	100.607	Kraftstofffilter ern; Luftfiltereinsatz ern; Motoröl b. Wartung; Ölfilter ern; Regelwartungsdienst; Wartung Sonstiges
07.03.2023	68.577	Bremsflüssigkeit ern; Bremsscheiben + Klötze h; Bremsscheiben + Klötze v; Motoröl b. Wartung; Regelwartungsdienst
24.06.2022	42.770	Motoröl b. Wartung; Regelwartungsdienst