



# HYUNDAI ix35

## ix35 1.7 CRDi 2WD blue

VIN NO TMAJU81VACJ269333  
Registration Number VACJ269333



MOT Date



Last Service



Number of Owners



Last Service Mileage



Number of Keys



First Registration Date



Odometer Reading



Country First Registered



### Inspection Report Summary

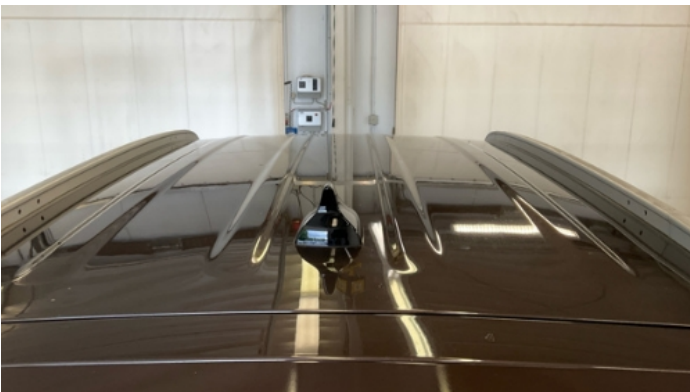
Customer	BCA Online	Report Number	P20250523122535
Inspection Date / Place	2025-05-23 / BCA Berlin	Cosmetic Grade	5

### Vehicle Summary

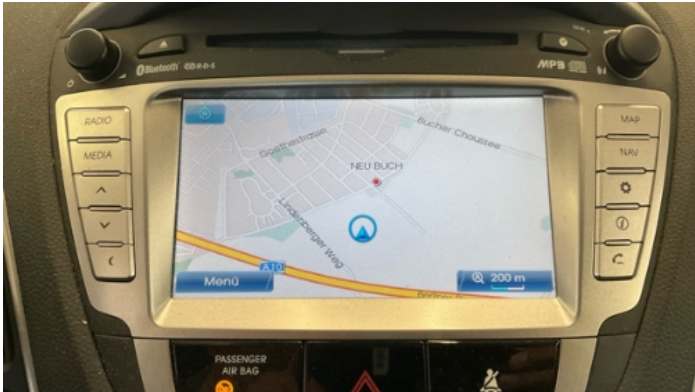
Vehicle Condition	Runner	VAT Type	Margin
Fuel Type	Diesel	Road Worthy	Unknown
Colour	Brown	Engine Size (cc)	1685
Engine Size	1.7	No of Doors	5
Body Type	SUV	Drive Train	Front
Seat Colour		No of Seats	5
Seat Covering Name	Grau	Seat Covering	Cloth/Synthetic Leather
Charging Cables		NEDC CO2 Rating (q/km)	135
Gearbox Type	Manual		

### Vehicle History & Documents

Service Book Available	Present	Next Service Mileage	km
Previous Usage		Imported	No
Manufacturer Warrenty			









## Equipment

Tinted Glass	Airbag Status	Anti-lock braking	Front fog lamps
Remote central locking	Roof rails	Stability control	Electrically folding wing mirrors
Rear parking sensors	Tow ball	Alloys wheels	Cruise control
Remote adjusting wing mirrors	Reversing Camera	Satellite navigation	CD Player
Radio			

## Equipment Details

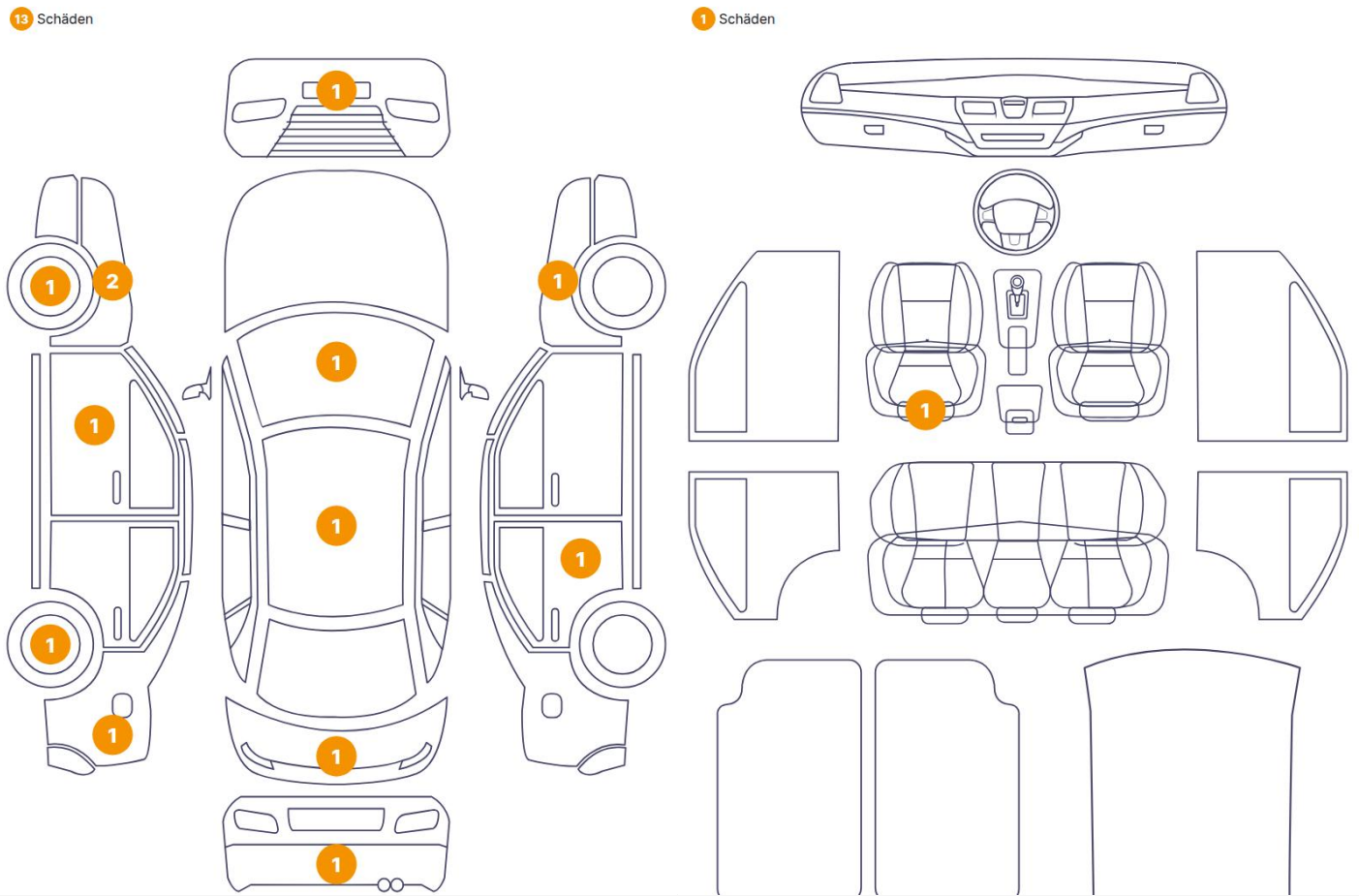
Tow Ball Type	Static	Air Conditioning	Dual Zone Climate Control
Alloy Wheel Size	16	Seat Heating	Front

## Wheels & Tyres

Right Front Tyre Depth	6	Left Front Tyre Depth	6
Right Rear Tyre Depth	6	Left Rear Tyre Depth	6



Cosmetic Damage

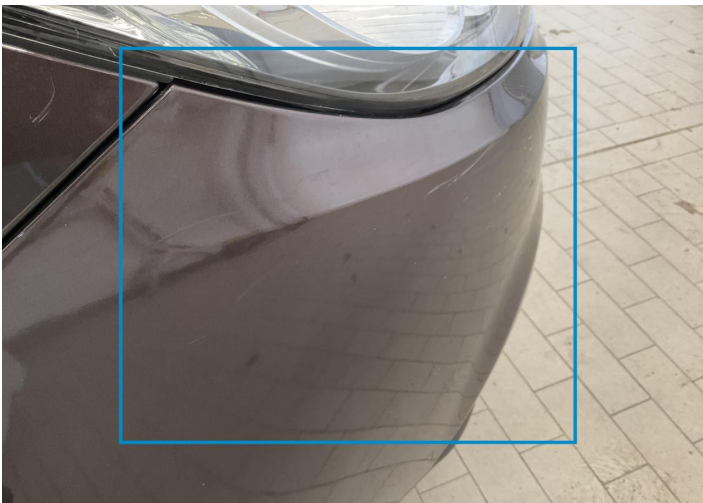


14 Fender / Front Left

Paint / Poor Previous Repair



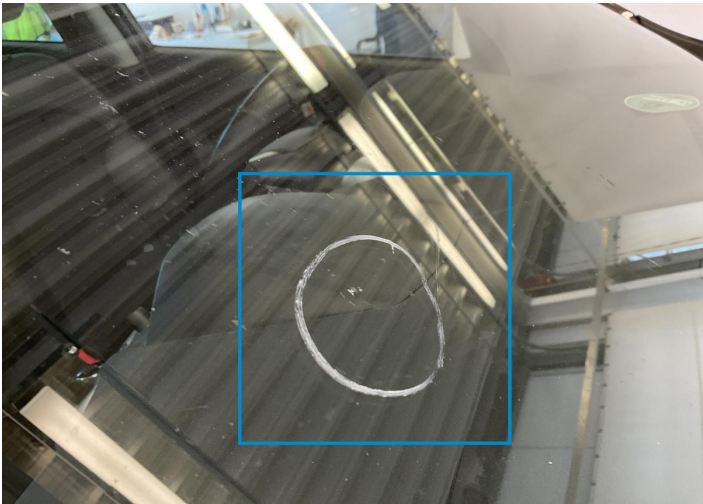
1. Seat / Front Left  
Interior / Broken -



2. Bumper / Front  
Paint / Scratch / Scuff -



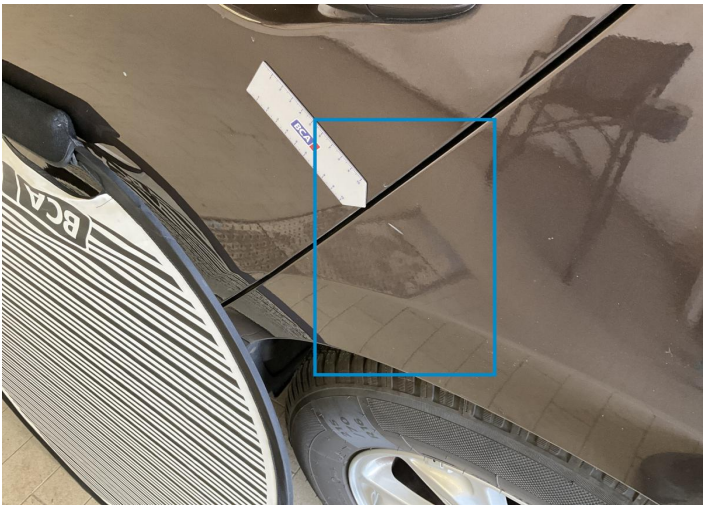
3. Fender / Front Right  
Paint / Scratch / Scuff -



4. Windshield / Front  
Paint / Chipping -



5. Door / Front Left  
Bodywork / Breakage / Crack -



6. Side Panel / Back Left  
Paint / Scratch / Scuff -

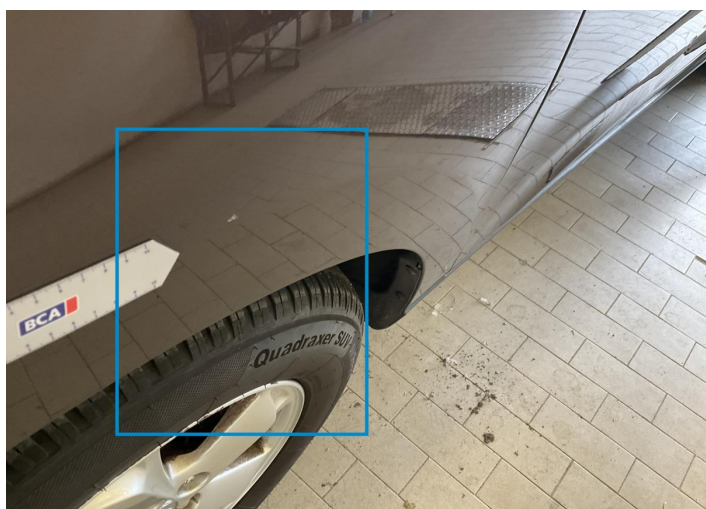




7. Rim / Back Left  
Out of Bodywork / Scratch -



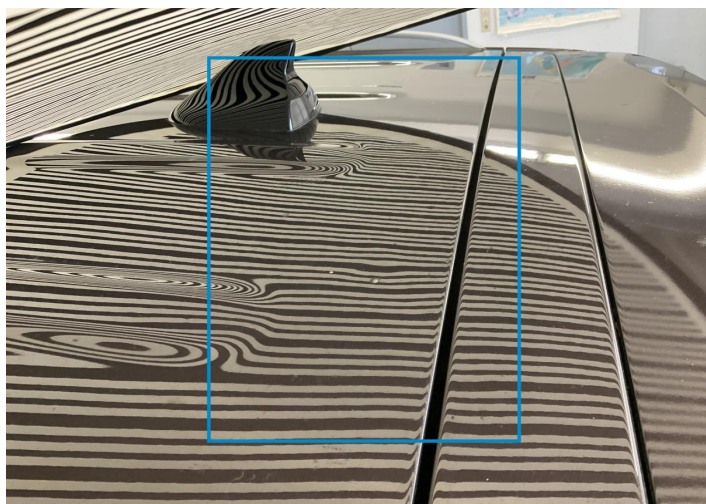
8. Rim / Front Left  
Out of Bodywork / Scratch -



9. Fender / Front Left  
Paint / Scratch / Scuff -



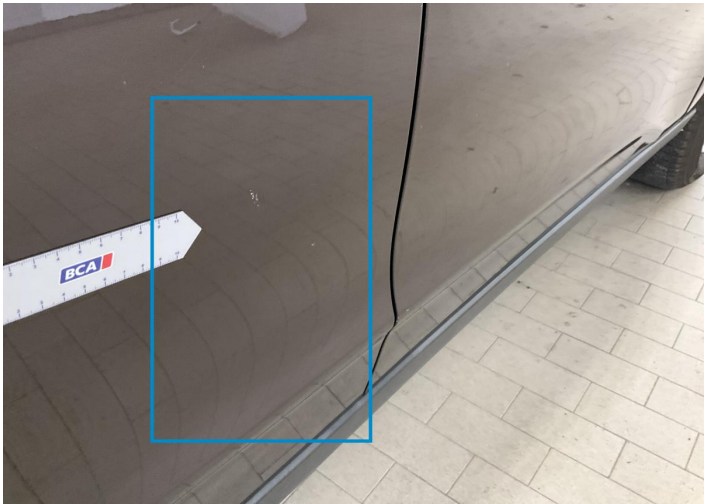
10. Bumper / Back  
Paint / Scratch / Scuff -



11. Roof  
Bodywork / Dent / Dent -



12. Tailgate  
Bodywork / Dent / Dent -



13. Door / Back Right  
Paint / Scratch / Scuff -



14. Fender / Front Left  
Paint / Poor Previous Repair -

## Mechanical Condition

### Control Lights

Display Defect	✓	ABS Warning Light	✓
ESP Fault/Traction Control Malfunction Light	✓	Airbag Warning Light	✓
Oil Pressure Warning Light	✓	Brake Warning Light	✓
Power Steering Warning Light	✓	Alternator / Battery	✓
No Dashboard Lights	✓	Tire Pressure Monitoring System	✓

### Equipments Test

Main & Spare Keys Functioning	✓	Electric Windows	✓
Navigation System	✓	Audio Equipment	✓
Parking Sensors / Cameras Functioning	✓	AC / Heating System	✓
Other Equipments	✓		

### Engine

Engine Status / EML	✓	Engine Leak Visible	✓
Engine Starts	✓		

### Levels

Brakes Fluid	✓	Coolant Fluid	✓
--------------	---	---------------	---



Test Drive Inspection

Steering Wheel			
Steering   Noise / Anomaly		✔	
Engine			
Engine Noise	❗	The Gears Scratch / Skip / Abnormal Operation	✔
Fume Quantity	✔	Power Loss	❗
Clutch			
Clutch Functioning		✔	
Brake			
Brake System Anomaly		✔	
General			
Test Driven Status		✔	
✔ <i>No troubles detected, good condition or correct tests, according to vehicle age and mileage</i>			
❗ <i>Damages or malfunction detected that requires repairs by the buyer</i>			
NA <i>Not applicable</i>			
☐ <i>Not tested</i>			

Disclaimer

Please also note the "UserGuide condition report", which shows the scope of the vehicle description.

[User Guide](#)