



HYUNDAI Tucson

Tucson 2.0 CRDi 4WD Automatik

VIN NO TMAJ381ADGJ059267
Registration Number ADGJ059267



MOT Date	Number of Owners	Number of Keys	Odometer Reading
-	2	2	168033 km
Last Service	Last Service Mileage	First Registration Date	Country First Registered
2022-07-06	119242	2015-11-09	-

Inspection Report Summary

Customer	BCA Online	Report Number	P20251001083853
Inspection Date / Place	2025-10-01 / ARS Altmann AG Riedstadt	Cosmetic Grade	3

Vehicle Summary

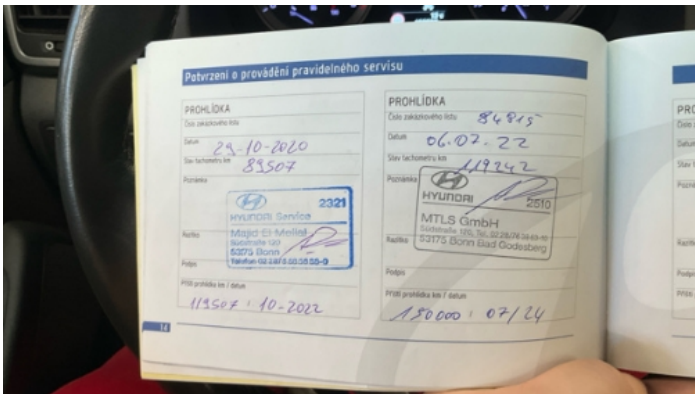
Vehicle Condition	Runner	VAT Type	Margin
Fuel Type	Diesel	Road Worthy	Yes
Colour	Blue	Engine Size (cc)	1995
Engine Size	2.0	No of Doors	5
Body Type	SUV	Drive Train	All-Wheel-Drive switchable
Seat Colour		No of Seats	5
Seat Covering Name		Seat Covering	Leather
Charging Cables		NEDC CO2 Rating (q/km)	170
Gearbox Type	Automatic		

Vehicle History & Documents

Service Book Available	Present	Next Service Mileage	km
Previous Usage		Imported	No
Manufacturer Warrenty			







Equipment

Tow ball	USB Socket	Alloys wheels	Auxiliary Socket
Cruise control	Digital Radio	Front parking sensors	Heated wing mirrors
Remote central locking	Roof rails	Split folding rear seats	Sunroof
Electrically adjustable seats	Electrictailgate	Keyless Entry	Leather steering wheel
Rear parking sensors	Trip Computer	Airbag Status	Anti-lock braking
Bluetooth telephone interface	Diesel particulate filter	Front fog lamps	Headlamp wash/wipe
Remote adjusting wing mirrors	Reversing Camera	Satellite navigation	Stability control
Distancewarningsystem	Electrically folding wing mirrors	Emergencybrakeassist	Laneassist
LED Headlamps			

Equipment Details

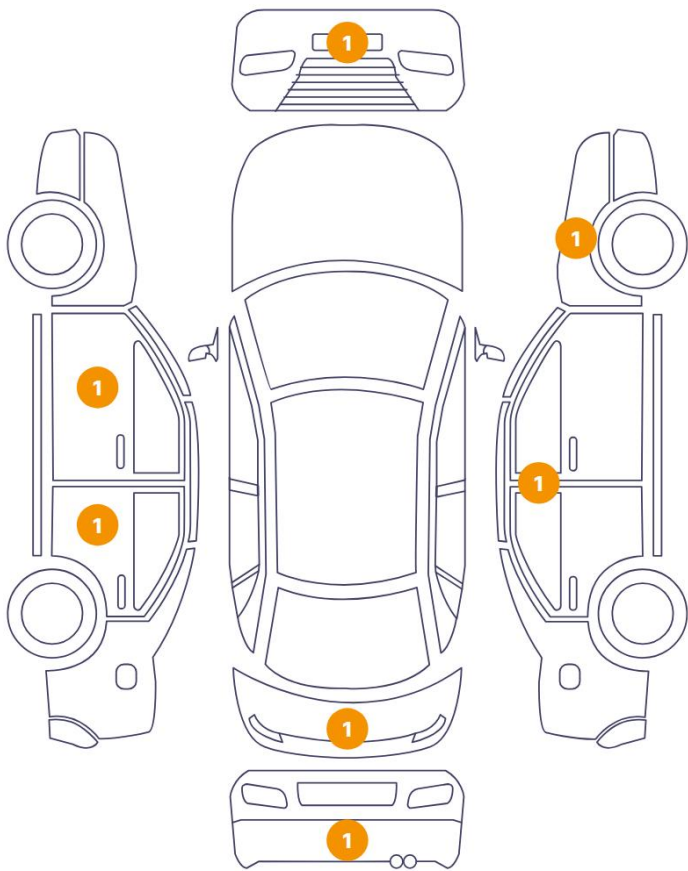
Tow Ball Type	Detachable	Air Conditioning	Dual Zone Climate Control
Alloy Wheel Size	19	Seat Heating	Front and Rear
Sunroof Type	Opening Panoramic		

Wheels & Tyres

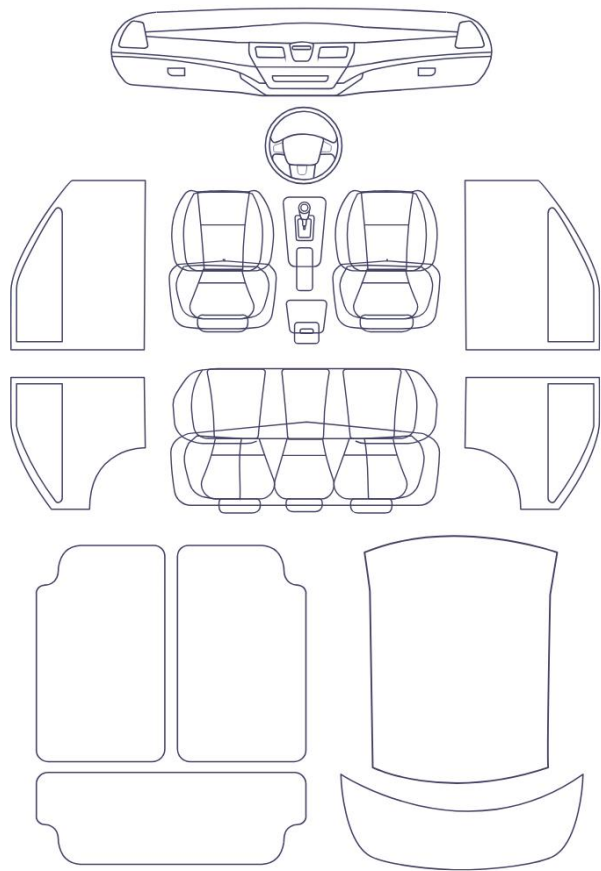
Right Front Tyre Depth	6	Left Front Tyre Depth	6
Right Rear Tyre Depth	6	Left Rear Tyre Depth	6

Cosmetic Damage

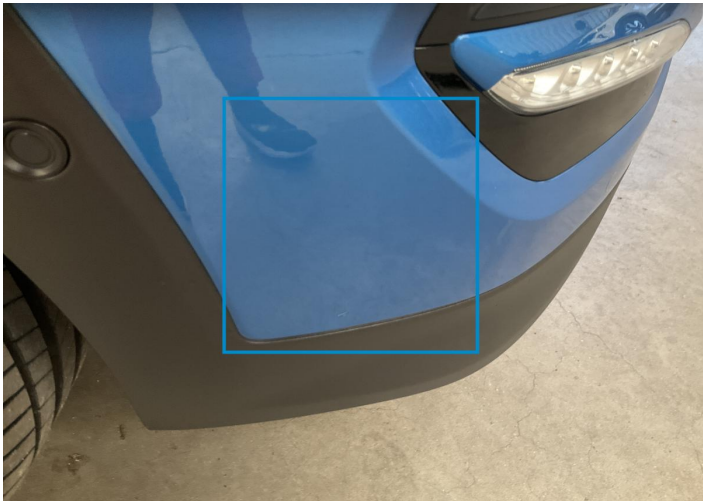
7 Schäden



0 Schäden



Component	Damage	Comments
1 Bumper / Front	Paint / Scratch / Scuff	
2 Fender / Front Right	Paint / Scratch / Scuff	
3 B Pillar / Center Right	Bodywork / Dent / Dent	
4 Tailgate	Bodywork / Dent / Dent	
5 Bumper / Back	Bodywork / Dent / Dent	
6 Pillar / Back Left	Bodywork / Dent / Dent	
7 Door Joint / Front Left Middle	Bodywork / Breakage / Hole	



1. Bumper / Front
Paint / Scratch / Scuff -



2. Fender / Front Right
Paint / Scratch / Scuff -



3. B Pillar / Center Right
Bodywork / Dent / Dent -



4. Tailgate
Bodywork / Dent / Dent -



5. Bumper / Back
Bodywork / Dent / Dent -



6. Pillar / Back Left
Bodywork / Dent / Dent -



7. Door Joint / Front Left Middle
Bodywork / Breakage / Hole -

Mechanical Condition

Engine

Engine Starts	✓	Engine Status / EML	✓
Engine Leak Visible	✓		

Control Lights

ABS Warning Light	✓	ESP Fault/Traction Control Malfunction Light	✓
Diesel Particulate Filter Light	✓	Airbag Warning Light	✓
Oil Pressure Warning Light	✓	Brake Warning Light	✓
Power Steering Warning Light	✓	Alternator / Battery	✓
All - wheel Drive	✓	No Dashboard Lights	✓
Display Defect	✓	Service Light	✓
Tire Pressure Monitoring System	✓		

Gearbox

Gear Box	✓
----------	---

Levels

Brakes Fluid	✓	Coolant Fluid	✓
--------------	---	---------------	---

Equipments Test

Other Equipments	✓	Central Locking	✓
Electric Windows	✓	Navigation System	✓
Audio Equipment	✓	Parking Sensors / Cameras Functioning	✓
AC / Heating System	✓		

Test Drive Inspection

Engine			
Engine Noise	✓	The Gears Scratch / Skip / Abnormal Operation	✓
Fume Quantity	✓	Power Loss	✓
Brake			
Brake System Anomaly	✓		
Steering Wheel			
Steering Noise / Anomaly	✓		
General			
Test Driven Status	✓		
✓ No troubles detected, good condition or correct tests, according to vehicle age and mileage			
! Damages or malfunction detected that requires repairs by the buyer			
NA Not applicable			
☐ Not tested			

Disclaimer

Please also note the "UserGuide condition report", which shows the scope of the vehicle description.

[User Guide](#)