



# HYUNDAI Tucson 2018 Diesel

## Tucson 1.6 crdi 48V NLine Safety&Sound Pack 2wd 13

VIN NO TMAJ3817GLJ124879  
Registration Number GD533HB



MOT Date

2024-12-12

Last Service



Number of Owners



Last Service Mileage



Number of Keys



First Registration Date

2020-12-22

Odometer Reading

125702 km

Country First Registered

Italy

### Inspection Report Summary

Customer	BCA Lodi	Report Number	P20251007122547
Inspection Date / Place	2025-10-07 / BCA Lodi	Cosmetic Grade	3

### Vehicle Summary

Vehicle Condition	Runner	VAT Type	Margin
Fuel Type	Hybrid	Gearbox Type	Sequential
Colour	White	Engine Size (cc)	1598
Engine Size	1.6	No of Doors	5
Body Type	SUV	Drive Train	Front
Seat Colour	Black	No of Seats	5
Seat Covering Name		Seat Covering	Cloth
Charging Cables		NEDC CO2 Rating (q/km)	114

### Vehicle History & Documents

Service Book Available	-	Next Service Mileage	km
Previous Usage	Normal Use	Imported	No
Manufacturer Warrenty			









Equipment

Central locking	Rain sensitive windscreen wipers	Alloys wheels	Electrically folding wing mirrors
Volante multifuncion	Remote adjusting wing mirrors	Cruise control	Tyre Mobility Kit
Power assisted steering	Rear parking sensors	Digital Radio	Satellite navigation
Parcel Shef	Remote central locking	Trip Computer	Stability control

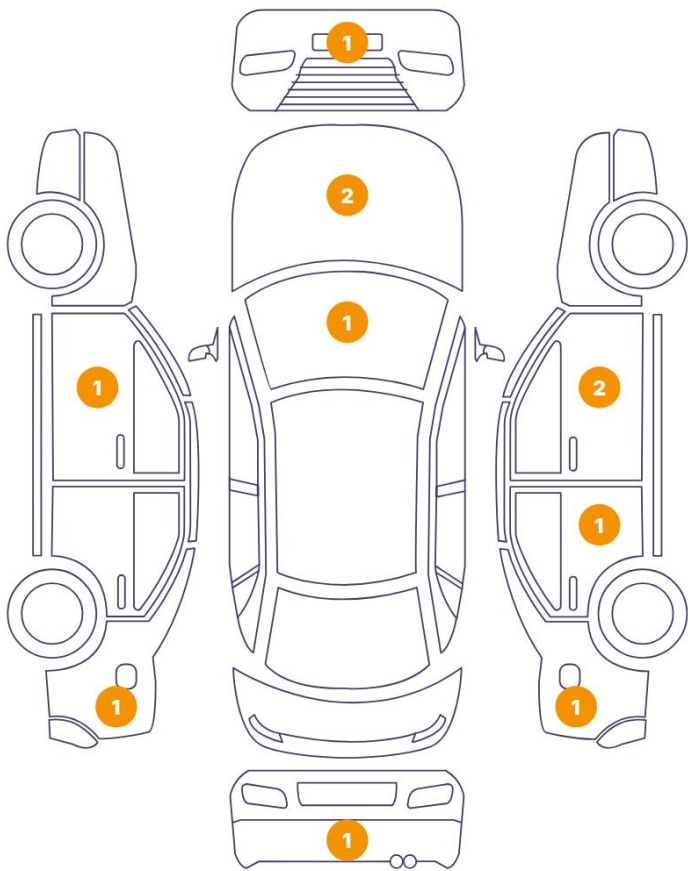
Wheels & Tyres

Mounted Tires

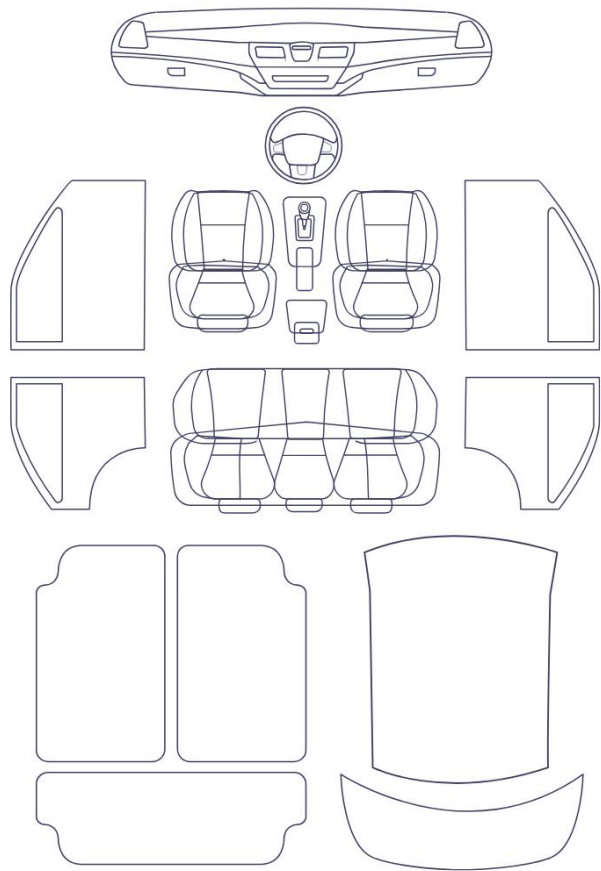
Tyre / Wheel Type	Summer	
	KLEBER KLEBER-DYNAXER SUV	225/55//R18 - 98V / 2 mm
	KLEBER KLEBER-DYNAXER SUV	225/55//R18 - 98V / 2 mm
	NEXEN NEXEN-N'FERA SPORT SUV	225/55//R18 - 98V / 2 mm
	NEXEN NEXEN-N'FERA SPORT SUV	225/55//R18 - 98V / 2 mm

Cosmetic Damage

11 Danni



0 Danni



Component		Damage	Comments
1	Windshield / Front	Glass Break / Impact	
2	Bumper / Front	Paint / Chipping	
3	Door / Back Right	Bodywork / Poor Previous Repair	
4	Pillar / Front Right	Bodywork / Poor Previous Repair	
5	Door / Front Right	Bodywork / Poor Previous Repair	
6	Fender / Back Left	Bodywork / Poor Previous Repair	
7	Door / Front Left	Bodywork / Poor Previous Repair	
8	Hood	Paint / Chipping	
9	Fender / Back Right	Bodywork / Poor Previous Repair	
10	Bumper / Back	Paint / Scratch / Line	
11	Hood	Bodywork / Dent	

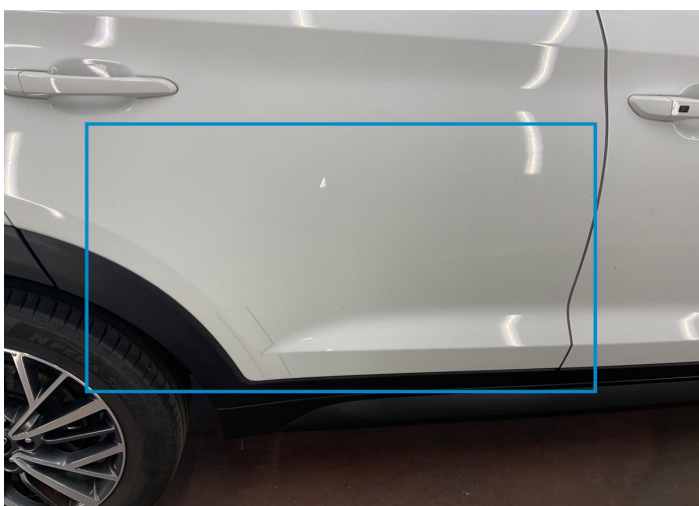




1. Windshield / Front  
Glass Break / Impact -



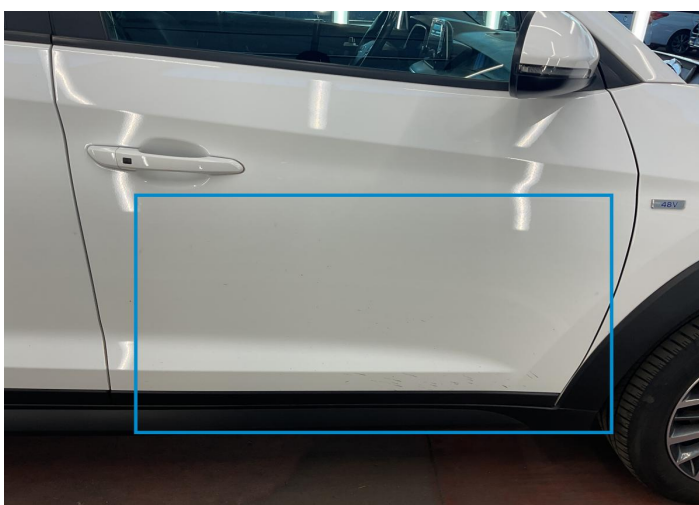
2. Bumper / Front  
Paint / Chipping -



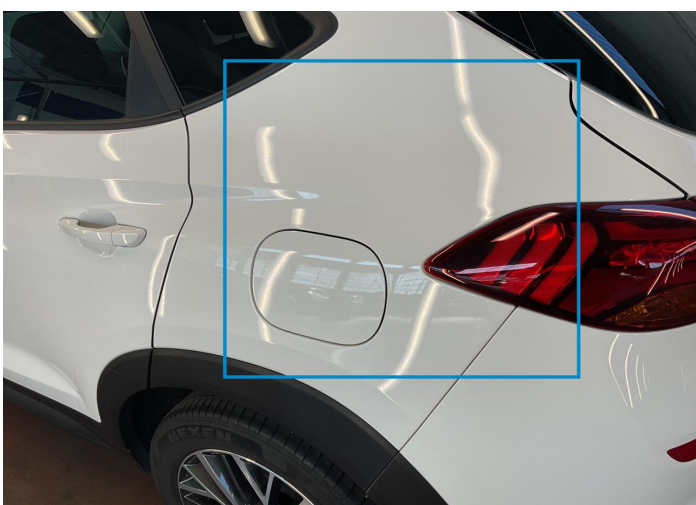
3. Door / Back Right  
Bodywork / Poor Previous Repair -



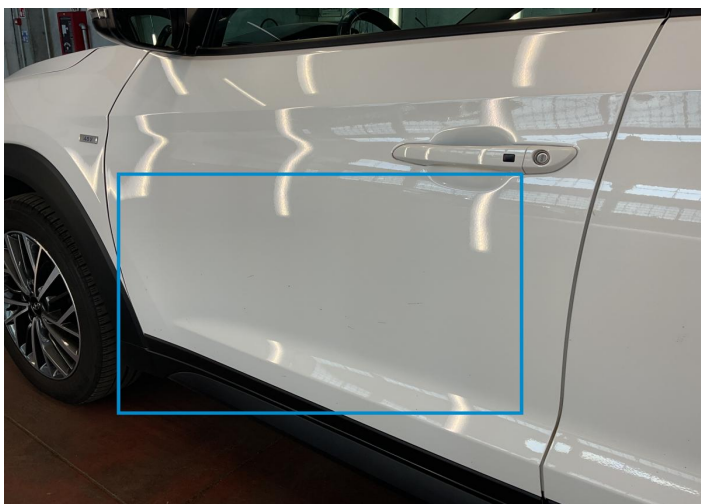
4. Pillar / Front Right  
Bodywork / Poor Previous Repair -



5. Door / Front Right  
Bodywork / Poor Previous Repair -



6. Fender / Back Left  
Bodywork / Poor Previous Repair -



7. Door / Front Left  
Bodywork / Poor Previous Repair -



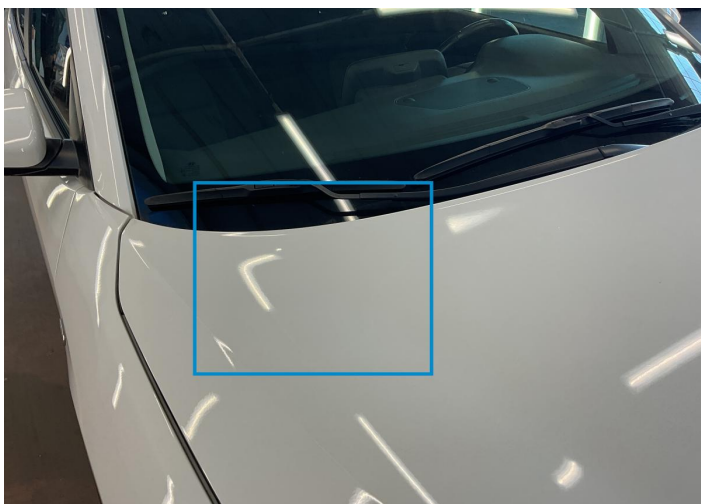
8. Hood  
Paint / Chipping -



9. Fender / Back Right  
Bodywork / Poor Previous Repair -



10. Bumper / Back  
Paint / Scratch / Line -



11. Hood  
Bodywork / Dent -



## Mechanical Condition

Engine			
Engine Starts	✓	Vehicle Start - up	✓
Engine Leak Visible	✓		
Clutch			
Clutch Functioning	✓		
Equipments Test			
Other Equipments	✓	AC / Heating System	✓
Levels			
Brakes Fluid	✓	Coolant Fluid	✓

## Test Drive Inspection

General			
Test Driven Status	✓		
Other Checks			
Steering	✓	Brakes	✓
Suspension	✓		
Equipments Test			
Steering   Noise / Anomaly	✓		
Engine			
Power Loss	✓	Fume Quantity	✓
Engine Noise	✓		
Gearbox			
Manual Gearbox	✓		

✓ No troubles detected, good condition or correct tests, according to vehicle age and mileage

! Damages or malfunction detected that requires repairs by the buyer

NA Not applicable

☐ Not tested