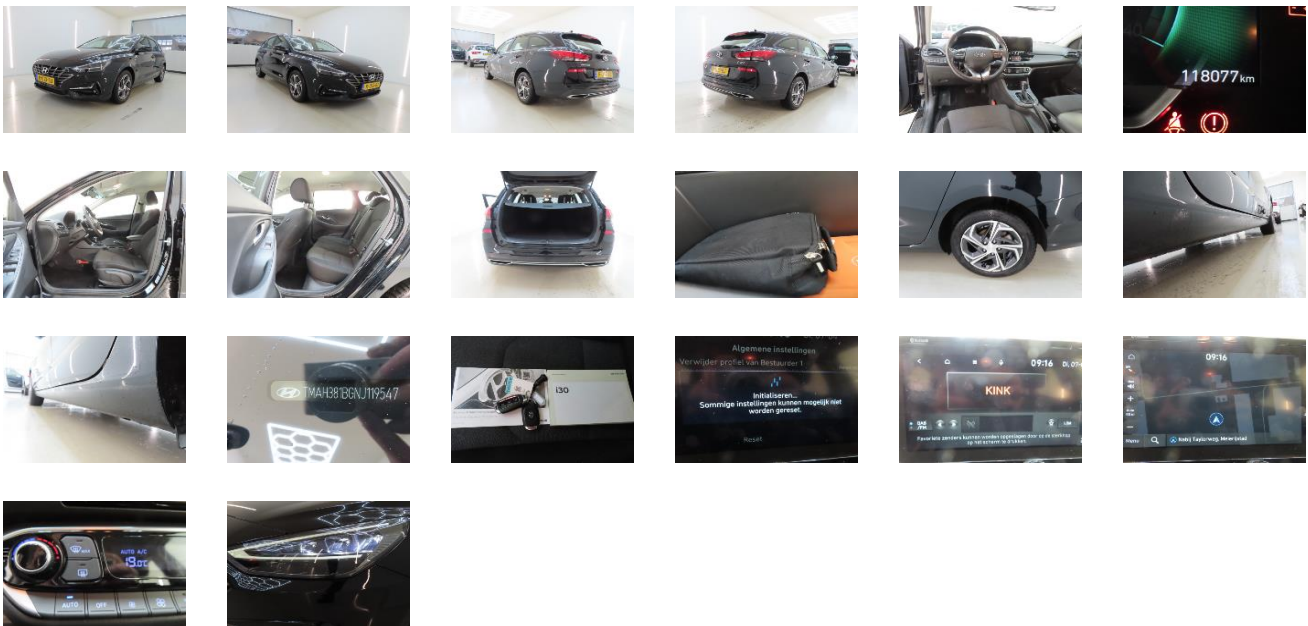


Vehicle details

| | | | | | |
|-------------------|--------------------|--------------|--|---------------------------|----------------|
| VIN | TMAH381BG NJ119547 | Brand | HYUNDAI | Maintenance date | - |
| Licence Plate | R0-13-BJ | Model | i30 Wagon 1.0 T-GDI MHEV Comfort Smart 7DCT 5d | Maintenance mileage | - |
| Registration date | 25/07/2022 | Year | 2022 | Exterior Color | Black Metallic |
| Odometer | 118 077 km | Engine size | 998 | interior Color | Grey |
| Fuel | Hybrid petrol | Body Type | - | Next technical inspection | - |
| Seats | - | Transmission | Automatic | CO2 | - |
| Doors | 5 | Gears | - | | |

Inspection Details

| | | | |
|-----------------|------------|-----------------|--------------|
| Inspection date | 07/04/2026 | Inspection loc. | Dekra Ayvens |
|-----------------|------------|-----------------|--------------|



Generic equipment

| | |
|----------------------------|---|
| Automated air-conditioning | ✓ |
| Cruise control | ✓ |
| GPS system | ✓ |
| Alloy wheel rims | ✓ |
| Automatic Gearbox | ✓ |
| Metallic paint | ✓ |
| Central locking | ✓ |
| Electric windows | ✓ |
| Side rails | ✓ |
| Park Distance Control | ✓ |
| Audio System | ✓ |
| Led lighting | ✓ |

Removable element

| | |
|------------|---|
| Load cover | ✓ |
|------------|---|

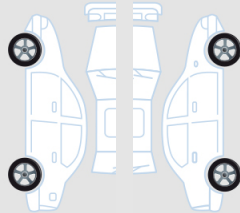
Technical Document

| | |
|------------------|---|
| User manual | ✓ |
| Warranty booklet | ✓ |
| Spare key | ✓ |
| Remote key | ✓ |

Tyres

Winter kit

Hankook 205/55/16 Winter 7.0 mm



Hankook 205/55/16 Winter 7.0 mm



Hankook 205/55/16 Winter 8.5 mm

Hankook 205/55/16 Winter 8.5 mm

Exterior

2



| | |
|-------------|-----------------|
| Part | Bumper moulding |
| Position | Front right |
| Damages | Not conform |
| Severity | - |
| Repair mode | Replace |

3



| | |
|-------------|-----------------|
| Part | Bumper moulding |
| Position | Front left |
| Damages | Not conform |
| Severity | - |
| Repair mode | Replace |

4



| | |
|-------------|---------|
| Part | Bumper |
| Position | Front |
| Damages | Broken |
| Severity | - |
| Repair mode | Replace |

Interior damage

1



| | |
|-------------|--------------------------|
| Part | Interior tailgate lining |
| Position | Down |
| Damages | Scratched |
| Severity | - |
| Repair mode | Smart Repair |

Comments

Opslagpark : Dekra Ayvens