



HYUNDAI i30
i30cw 1.6 CRDi
VIN NO TMAD381UAEJ033182
Registration Number UAEJ033182



MOT Date

2026-04-01

Last Service



Number of Owners

1

Last Service Mileage



Number of Keys

2

First Registration Date

2013-04-29

Odometer Reading

154393 km

Country First Registered

Germany

Inspection Report Summary

Customer	BCA Online	Report Number	P20250923134906
Inspection Date / Place	2025-09-23 / SULOJA Mönchengladbach	Cosmetic Grade	3

Vehicle Summary

Vehicle Condition	Runner	VAT Type	Margin
Fuel Type	Diesel	Road Worthy	Yes
Colour	Grey	Engine Size (cc)	1582
Engine Size	1.6	No of Doors	5
Body Type	Stationwagon / Estate	Drive Train	Front
Seat Colour		No of Seats	5
Seat Covering Name		Seat Covering	Leather
Charging Cables		NEDC CO2 Rating (q/km)	113
Gearbox Type	Manual		

Vehicle History & Documents

Service Book Available	Missing	Next Service Mileage	km
Previous Usage		Imported	No
Manufacturer Warrenty			







Equipment

USB Socket	Alloys wheels	Auxiliary Socket	Cruise control
Front fog lamps	Remote adjusting wing mirrors	Roof rails	Sunroof
CD Player	Leather steering wheel	Rear parking sensors	Airbag Status
Anti-lock braking	Bluetooth telephone interface	Diesel particulate filter	Front parking sensors
Remote central locking	Stability control	Xenon headlamps	Central locking

Radio

Equipment Details

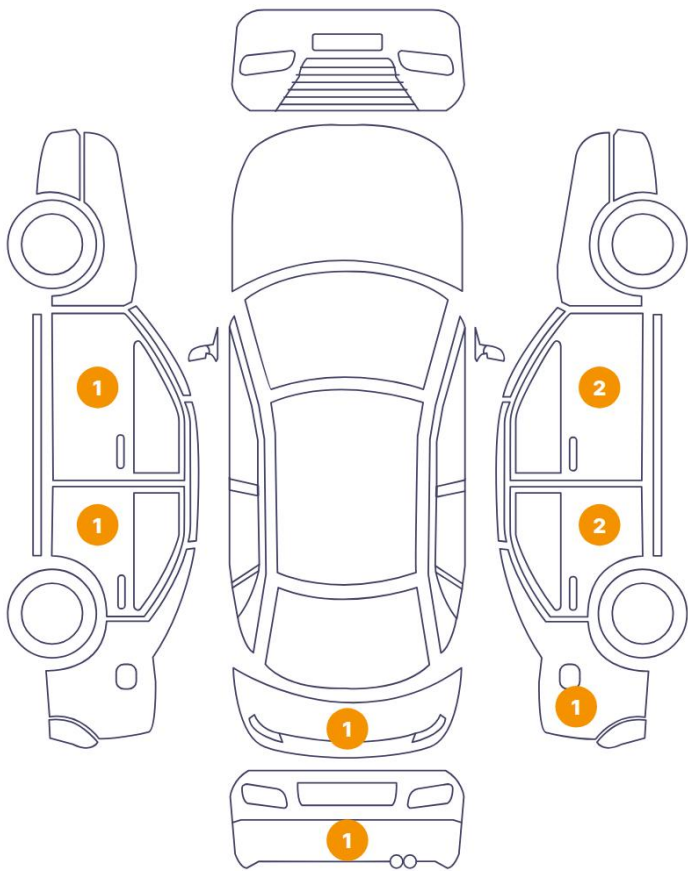
Air Conditioning	Yes	Alloy Wheel Size	16
Seat Heating	Front	Sunroof Type	Opening Panoramic

Wheels & Tyres

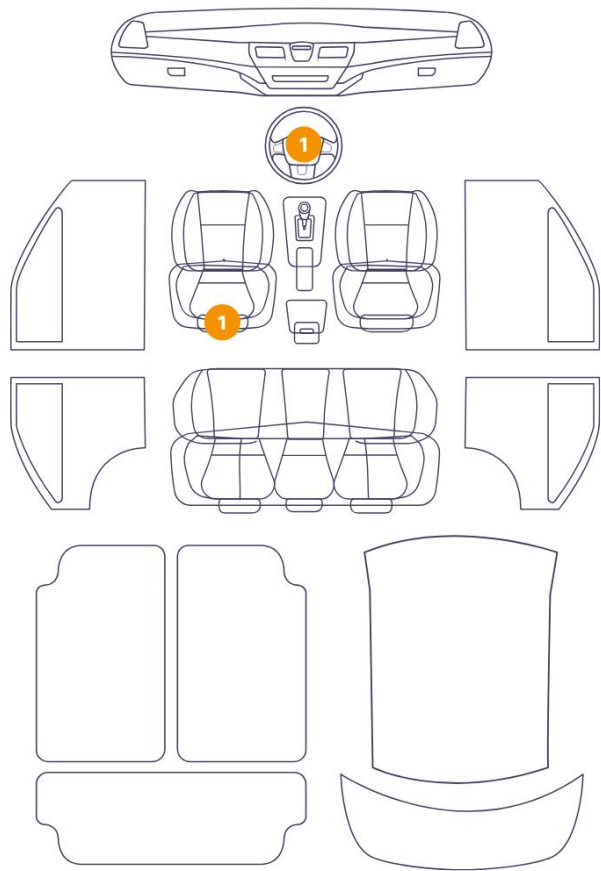
Right Front Tyre Depth	3	Left Front Tyre Depth	3
Right Rear Tyre Depth	4	Left Rear Tyre Depth	4

Cosmetic Damage

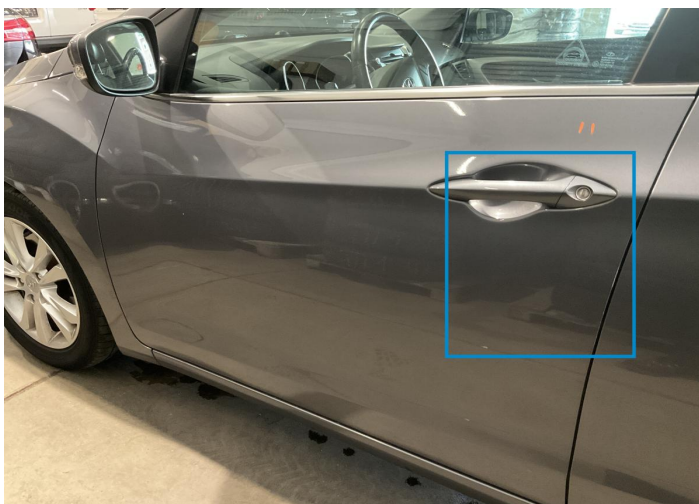
9 Schäden



2 Schäden



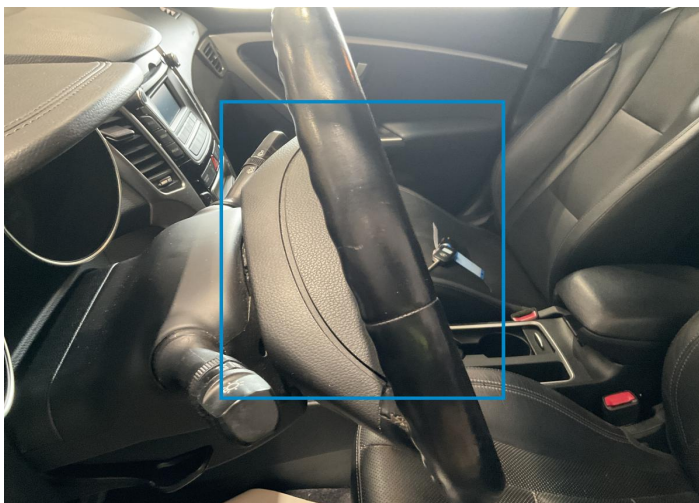
Component		Damage	Comments
1	Door / Front Left	Paint / Scratch / Scuff	
2	Door / Back Left	Paint / Scratch / Scuff	
3	Steering Wheel / Front	Interior / Scratched	
4	Seat / Front Left	Interior / Scratched	
5	Tailgate	Bodywork / Dent / Dent	
6	Corner Bumper / Back Right	Paint / Scratch / Scuff	
7	Side Panel / Back Right	Paint / Scratch / Scuff	
8	Door / Back Right	Paint / Chipping	
9	Door / Back Right	Paint / Scratch / Scuff	
10	Door / Front Right	Bodywork / Dent / Dent	
11	Door / Front Right	Paint / Scratch / Scuff	



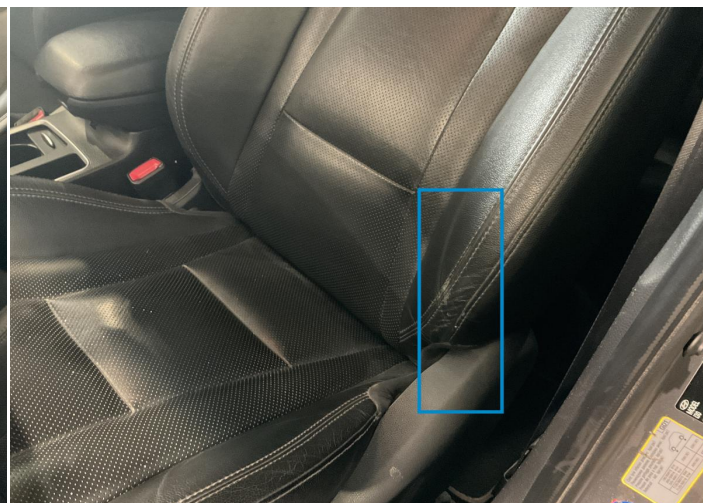
1. Door / Front Left
Paint / Scratch / Scuff -



2. Door / Back Left
Paint / Scratch / Scuff -



3. Steering Wheel / Front
Interior / Scratched -



4. Seat / Front Left
Interior / Scratched -



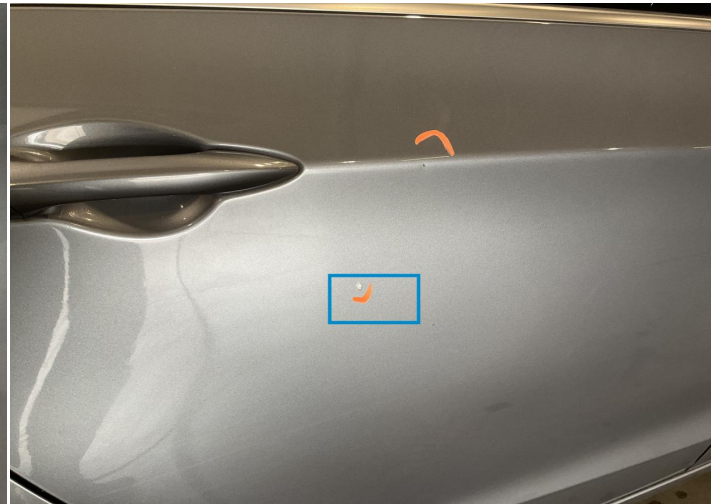
5. Tailgate
Bodywork / Dent / Dent -



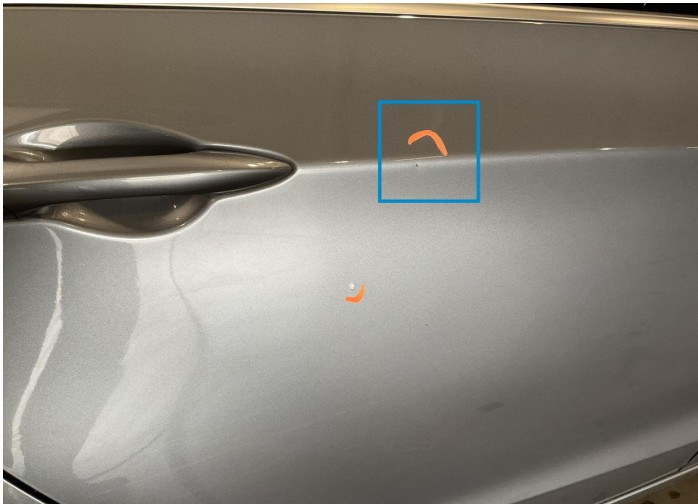
6. Corner Bumper / Back Right
Paint / Scratch / Scuff -



7. Side Panel / Back Right
Paint / Scratch / Scuff -



8. Door / Back Right
Paint / Chipping -



9. Door / Back Right
Paint / Scratch / Scuff -



10. Door / Front Right
Bodywork / Dent / Dent -



11. Door / Front Right
Paint / Scratch / Scuff -

Mechanical Condition

Control Lights

ABS Warning Light	✓	ESP Fault/Traction Control Malfunction Light	✓
Diesel Particulate Filter Light	✓	Airbag Warning Light	✓
Oil Pressure Warning Light	✓	Brake Warning Light	✓
Power Steering Warning Light	✓	Alternator / Battery	✓
No Dashboard Lights	✓	Display Defect	✓
Service Light	✓		

Engine

Engine Status / EML	✓	Engine Leak Visible	✓
Engine Starts	✓		

Gearbox

Gear Box	✓
----------	---

Equipments Test

Audio Equipment	✓	AC / Heating System	✓
Central Locking	✓	Main & Spare Keys Functioning	✓
Electric Windows	✓	Parking Sensors / Cameras Functioning	✓
Other Equipments	✓		

Levels

Brakes Fluid	✓	Coolant Fluid	✓
--------------	---	---------------	---

Test Drive Inspection

Steering Wheel			
Steering Noise / Anomaly		✔	
Engine			
Engine Noise	✔	The Gears Scratch / Skip / Abnormal Operation	✔
Fume Quantity	✔	Power Loss	✔
Brake			
Brake System Anomaly		✔	
Clutch			
Clutch Functioning		⚠	
General			
Test Driven Status		✔	
✔ No troubles detected, good condition or correct tests, according to vehicle age and mileage			
⚠ Damages or malfunction detected that requires repairs by the buyer			
NA Not applicable			
= Not tested			

Disclaimer

Please also note the "UserGuide condition report", which shows the scope of the vehicle description.

[User Guide](#)