



HYUNDAI i30

i30 1.6 CRDi

VIN NO TMAD251UAEJ200065

Registration Number UAEJ200065



MOT Date

2025-08-01

Last Service

2023-08-03

Number of Owners

3

Last Service Mileage

138543

Number of Keys

2

First Registration Date

2014-07-30

Odometer Reading

156242 km

Country First Registered

Germany

Inspection Report Summary

Customer	BCA Online	Report Number	P20250911114101
Inspection Date / Place	2025-09-11 / BCA Oberndorf	Cosmetic Grade	3

Vehicle Summary

Vehicle Condition	Runner	VAT Type	Margin
Fuel Type	Diesel	Road Worthy	Yes
Colour	Grey	Engine Size (cc)	1582
Engine Size	1.6	No of Doors	5
Body Type	Sedan	Drive Train	Front
Seat Colour		No of Seats	5
Seat Covering Name	Schwarz	Seat Covering	Cloth
Charging Cables		NEDC CO2 Rating (q/km)	104
Gearbox Type	Manual		

Vehicle History & Documents

Service Book Available	Present	Next Service Mileage	km
Previous Usage		Imported	No
Manufacturer Warrenty			







Equipment

USB Socket	Alloys wheels	Auxiliary Socket	Diesel particulate filter
Remote adjusting wing mirrors	Split folding rear seats	CD Player	Leather steering wheel
Rear parking sensors	Airbag Status	Anti-lock braking	Bluetooth telephone interface
Front fog lamps	Remote central locking	Stability control	Central locking
Radio			

Equipment Details

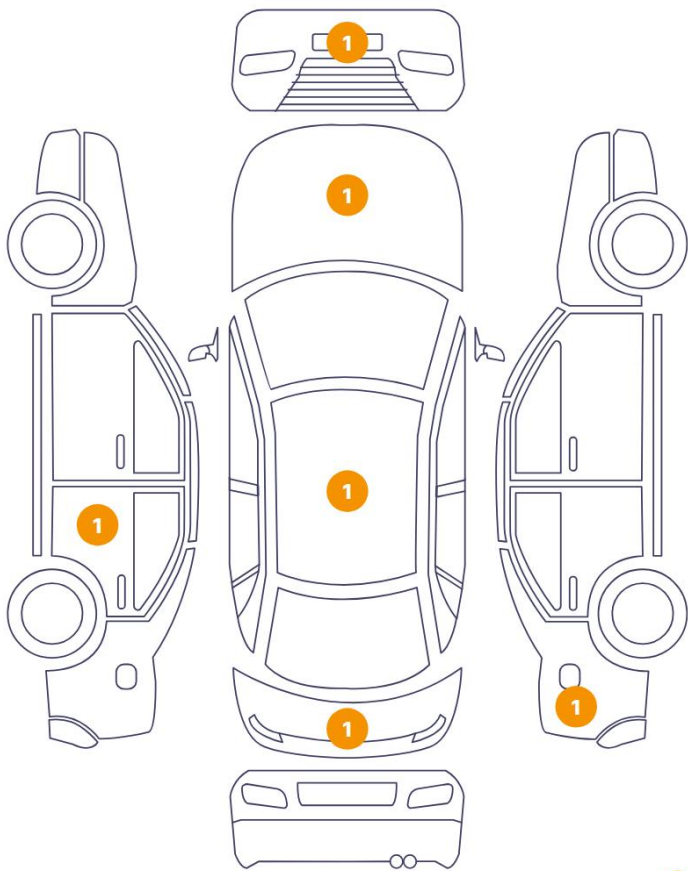
Air Conditioning	Yes	Alloy Wheel Size	15
Extra Wheel / Tyre Set	Winter Tyres - Alloy	Seat Heating	Front

Wheels & Tyres

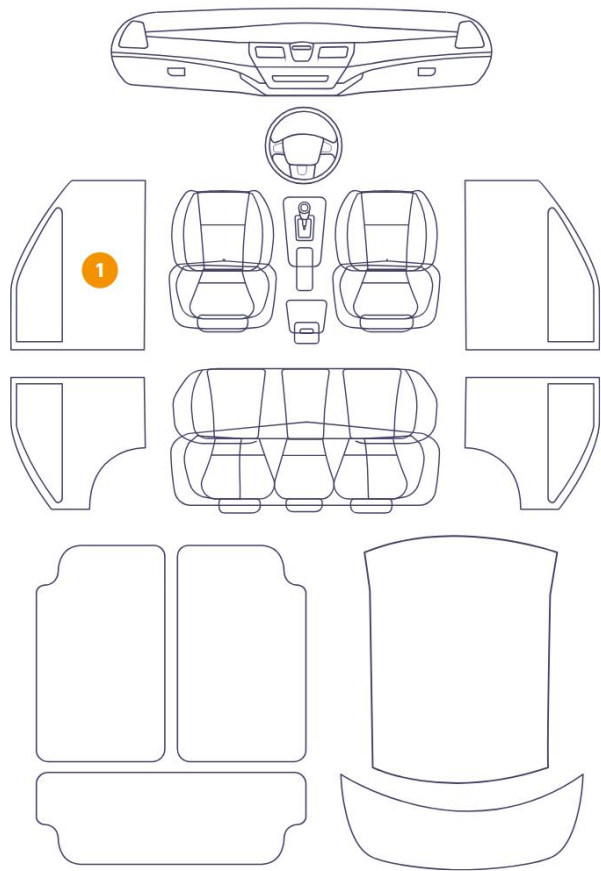
Right Front Tyre Depth	5	Left Front Tyre Depth	5
Right Rear Tyre Depth	5	Left Rear Tyre Depth	5
Extra Wheel - 2 Tyre Depth	2	Extra Wheel - 3 Tyre Depth	4
Extra Wheel - 4 Tyre Depth	4		

Cosmetic Damage

7 Schäden



1 Schäden



1

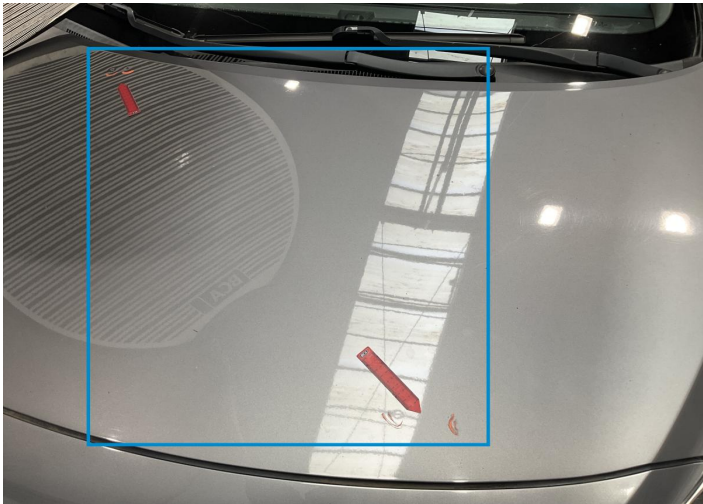
Component	Damage	Comments
1 Other	Anomalyon Element	
2 Bumper / Front	Paint / Scratch / Scuff	
3 Hood	Bodywork / Dent / Dent	
4 Roof	Bodywork / Dent / Dent	
5 Interior door handle Front left	Interior / Scratched	
6 Door / Back Left	Bodywork / Dent / Dent	
7 Tailgate	Paint / Scratch / Line	
8 Side Panel / Back Right	Paint / Scratch / Line	



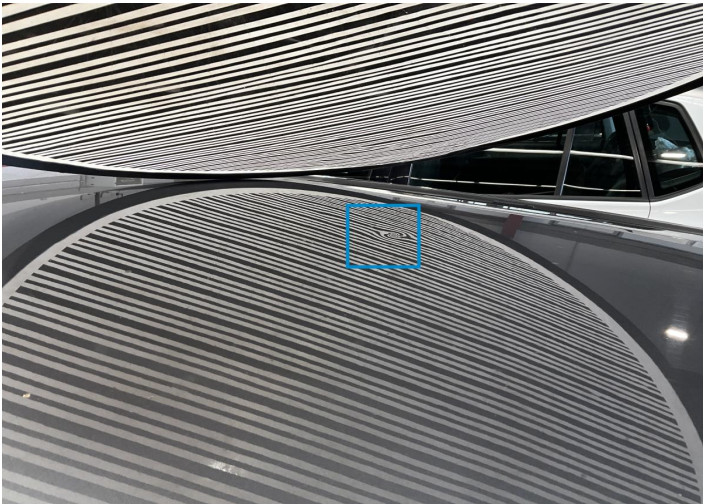
1.
Anomaly Element -



2. Bumper / Front
Paint / Scratch / Scuff -



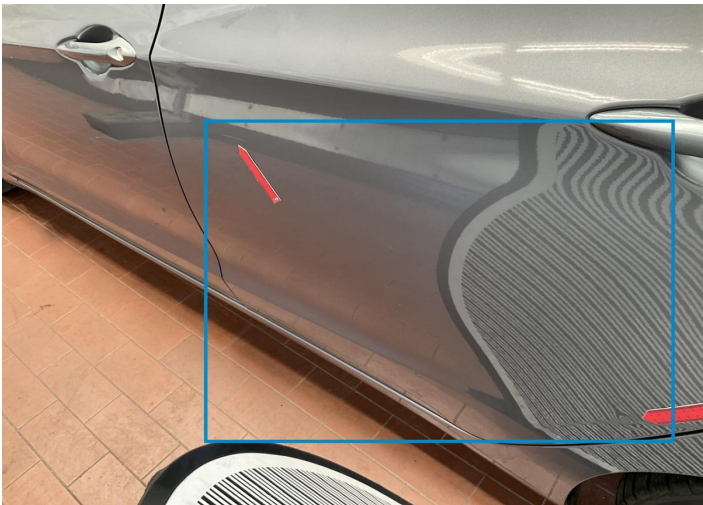
3. Hood
Bodywork / Dent / Dent -



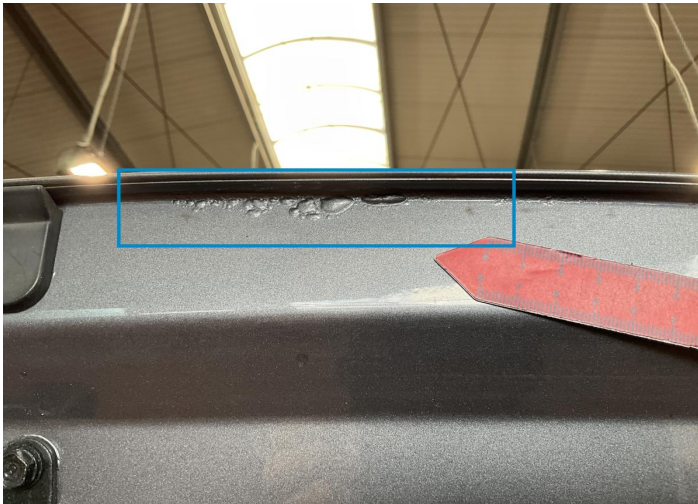
4. Roof
Bodywork / Dent / Dent -



5. Interior door handle Front left
Interior / Scratched -



6. Door / Back Left
Bodywork / Dent / Dent -



7. Tailgate
Paint / Scratch / Line -



8. Side Panel / Back Right
Paint / Scratch / Line -

Mechanical Condition

Control Lights

Display Defect	✓	Service Light	!
ABS Warning Light	✓	ESP Fault/Traction Control Malfunction Light	✓
Diesel Particulate Filter Light	✓	Airbag Warning Light	✓
Oil Pressure Warning Light	✓	Brake Warning Light	✓
Power Steering Warning Light	✓	Alternator / Battery	✓
No Dashboard Lights	✓		

Equipments Test

Central Locking	✓	Main & Spare Keys Functioning	✓
Audio Equipment	✓	Parking Sensors / Cameras Functioning	✓
AC / Heating System	✓	Other Equipments	✓

Engine

Engine Status / EML	✓	Engine Leak Visible	!
Engine Starts	✓		

Gearbox

Gear Box	✓
----------	---

Levels

Brakes Fluid	✓	Coolant Fluid	✓
--------------	---	---------------	---

Test Drive Inspection

Steering Wheel

Steering | Noise / Anomaly

Engine

Engine Noise The Gears Scratch / Skip / Abnormal Operation

Fume Quantity Power Loss

Clutch

Clutch Functioning

Brake

Brake System Anomaly

General

Test Driven Status Not Performed

- No troubles detected, good condition or correct tests, according to vehicle age and mileage
- Damages or malfunction detected that requires repairs by the buyer
- Not applicable
- Not tested

Disclaimer

Please also note the "UserGuide condition report", which shows the scope of the vehicle description. [User Guide](#)