



Expertise

Protocol number: 41294149  
Order No. / Reference: 25137643  
Inspection date: 28 Aug 2025

Manufacturer: Land Rover	Model: Defender 90 P400 SE AWD
VIN: SALEA6BU4P2130330	



Vehicle details	
Manufacturer / Type / Model / Equipment	
Land Rover Defender 90 P400 SE AWD	
Vehicle Identification number	SALEA6BU4P2130330
Mileage (Read)	55,123 km
First registration	20 Oct 2022
Number of holders	1
Next periodical technical inspection	10/2025
(Report not on hand)	
Power / Engine displacement	294 kw / 2,996 ccm
Fuel type / Cylinder	Hybrid Petrol / E / 6
Gearbox / Number of gears	Automatic / 8
Type of drive	All-wheel drive
Type of vehicle	SUV
Colour / colour code	Pangea Green Metallic
Doors / Seats	3 / 5
Upholstery type	Leather
Colour of upholstery	Beige
Re/Import	no
Vehicle with smoke odor	no
Driving readiness	Roadworthy

Vehicle details			
Maintenance booklet / proof	digital proof / complete	Next maintenance in	11,400 km
Last maintenance on / at	05/2024 at 32,536 km		
Key is / should be	1 / 2	FZG documents	ZB#2 (B) was available (copy), ZB#1 (S) was not available
		Letter No.	GM810185
Previous damage / Accident	Detectable	Repainting	Detectable
Inspection conditions	sufficient	Lifting equipment / pit	yes
Test drive	short drive on the company premises	Engine function test	Performed
Driving readiness	Roadworthy		
Manufacturer key number/ type code number	1590 / AJB 00375		
Emission standard	EURO6;WLTP;AP;PI/CI; M, N1 I	Fine dust sticker	
Permitted total weight	2,970 kg	Empty weight	

Tyres				
Mounted tyres				
#	Tyre size	Type of tyre	Manufacturer	Tread depth
1)	275/45 R22 112W	Summer tyres on Light alloy	Continental	6mm / 6mm
2)	275/45 R22 112W	Summer tyres on Light alloy	Continental	6mm / 6mm
Replacement				
Typ	Tyre size	Type of tyre	Manufacturer	Tread depth
E	275/45 R22 112W	Summer tyres on Light alloy	Continental	7 mm

Legend: Tread depth information for tires on the left is in the first place, for tires on the right is in the second place on the axle in the direction of travel



## Equipment

### Standard equipment

- 3D surround camera system
- Perimetric alarm system
- All-wheel drive (permanent)
- Trailer Stability System (TSA)
- Attention Assistant
- Exterior mirrors, electrically folding and heated, automatic dimming on the driver's side (and ambient lighting.)
- Electronic brake force distribution (EBC)
- Click and Go basic unit
- Roof: Metal roof
- Roof rails omitted
- tachometer
- Dynamic Stability Control (DSC)
- Electromechanical power steering (EPAS)
- Electric window lifter (with one-touch function and anti-pinch protection)
- Back window, heater
- Premium interior lighting
- Internet: Online Pack with data plan (up to 20 GB of data usage per month included for all selected online features. Exceeding this limit will throttle data to approximately 200 kbps. One-year term from activation. Paid extension possible.)
- Headrests (2)
- Cornering Brake Control (CBC)
- LED rear lights
- Steering wheel: Multifunction leather steering wheel in Dinamica
- Fog light
- Package: Exterior Pack (The exterior pack includes: - Application on the bonnet in Ebony - Exterior mirror caps in Narvik Black - Front and rear apron in Ceres Silver - Fender flares and lower door trims in Anthracite Grained - Radiator grille trim in Anthracite Grained - Lettering in Ceres Silver)
- Radio accessories: 10" touchscreen
- Radio accessories: Amazon Alexa
- Tire pressure monitoring system (TPMS)
- Wheels: All-season tires
- Secure Tracker (12 month subscription)
- Seats: Rear seats, 40:20:40 split with armrest
- Lane departure warning system
- 12 volt sockets in the cargo area
- Phone: Android Auto, wireless
- Phone: Apple CarPlay, wireless
- 12.3" TFT instrument display
- Blind spot warning system when opening the door
- Transfer case, two-stage
- Roll Control (RSC)
- Airbag: Driver and passenger side with seat occupancy detection
- Low Traction Launch
- Anti-lock braking system (ABS)
- Autonomous Emergency Braking (AEB)
- Gasoline particulate filter (GPF)
- Hill Descent Control (HDC) (with integrated Hill Start Assist)
- Roof in body color
- Headliner "Morzine" (fabric) - Light Oyster
- Decor: Cross member in light grey, powder-coated and brushed
- 360° parking assistance (3D surround camera system)
- Electronic Traction Control (ETC)
- Cruise control with speed limiter
- Transmission 8-speed automatic
- Rear window wiper
- Interior rearview mirror with automatic dimming
- ISOFIX anchorage points in the rear (outer seats)
- Keyless Entry - Keyless access system
- Child safety lock, electric
- Automatic climate control (2-zone)
- Collision warning system when reversing
- Rear headrests (3)
- Load compartment cover
- Steering wheel: Electrically adjustable steering column
- Automatic headlight range adjustment
- Center console with armrest (including two USB ports and two 12V ports for the second row of seats)
- Electric parking brake (EPB)
- Pivi Pro with Navigation (Including Navigation Pro Connected (3-year subscription))
- Radio: Digital Radio (DAB+)
- Radio: Meridian sound system (400 W - 11 speakers - incl. subwoofer)
- Rain sensor
- Remote (3 years from activation)
- Gearshift/selector lever: Automatic selector lever in leather
- Sensor-controlled driving light system
- Seats: Front seats, 12-way electrically adjustable, with memory function (forward/backward - seat height - seat tilt - backrest tilt - lumbar support, 4-way electrically adjustable - headrest height, manually adjustable)
- Terrain Response
- Blind spot lane assistant including proximity sensor
- Traffic sign recognition with adaptive speed limiter
- Wade Sensing
- Immobiliser



## Extra equipment

- 22 inch WKR Style 5098 in white lacquered
- Roof in contrasting paint - white
- Roof rails in black
- Floor mats
- Paint finish: metallic
- Steering wheel: Multifunction leather steering wheel with leather airbag cover
- Package: Comfort Package Air Suspension (Adaptive Chassis (Adaptive Dynamics) - Automatic Headlight Leveling - Electronically Controlled Air Suspension)
- Package: Comfort Plus (2 front cup holders with covers - Wireless smartphone charging - Center armrest with integrated refrigerator - Meridian sound system (400 W, 11 speakers including subwoofer) - Premium interior lighting)
- Package: Winter (heated windscreen - heated windscreen washer nozzles - heated steering wheel - headlight cleaning system)
- Upholstery: Windsor leather
- Wheels: 22" 5-spoke alloy wheels, Style 5098 GLOSS BLACK (9J x 22 with 275/45 R22 tires)
- Wheels: Full-size spare wheel 22"
- Auxiliary heater with remote control and timer function
- Paint 5x 22 inch rims in white
- Headliner "Morzine" (fabric) - Ebony
- Windscreen made of heat-insulating glass
- Garage door opener (HomeLink)
- Matrix LED headlights with LED signature
- Package: Driver Assistance (Adaptive Cruise Control (ACC) - Rear Collision Warning System - Reversing Collision Warning System - Blind Spot Assist including Proximity Sensor - Blind Spot Warning System when Opening Doors)
- Package: Premium Interior (Extended Leather Package (upper door panels, dashboard surround, and lower center console side panels in Windsor leather) - ISOFIX attachment points for front passenger seat - Electrically adjustable steering column - 14-way electrically adjustable front seats, heated and cooled, with memory function (forward/backward, seat height, seat cushion tilt, backrest tilt, 4-way electrically adjustable lumbar support, side bolsters, 4-way manual head restraints))
- Wheels: Spare wheel cover in body color
- Seats: Rear seats, 40:20:40 split, heated, with armrest

## Brief expert findings

Documents submitted	At the time of the inspection, the registration certificate Part 2 (letter) was available, but the registration certificate Part 1 (certificate) was not. (Copy)
VIN comparison	The vehicle identification number (VIN) was read from the vehicle and its conformity with the submitted documents was verified during the inspection by the undersigned.
Inspection	The inspection conditions were sufficient for the assessment of the vehicle. Lifting equipment and a pit were available for examining the vehicle.
Test drive	A short maneuvering and shunting trip was carried out on the company premises.
Engine function test	An engine test run was performed.
Driving readiness	The vehicle was drivable at the time of inspection.

## Value reducing factors

No.	Component group	Description
1	Sill - left side	Sill - Scratch(es) - Smart repair
2	Door - front left side	Door edge - Scratch(es) - Smart repair
3	Wheel / tyres	Alloy rim - front right side - Scratched - Smart repair
4	Mudguard - right side	Mudguard - right side - Stone chips - Paint
5	Mudguard - left side	Mudguard - left side - Stone chips - Paint
6	Bonnet	Bonnet - Dent / paintcoat damage - Repair and paint
7	Vehicle glazing	Windscreen (mit Rissbildung) - Stone chips - Replace

## Wear and tear

No.	Component group	Description
1	Sill - left side	Trim - Scratch(es) - No deduction



No.	Component group	Description
2	Door - front right side	Door - Scratch(es) - No deduction
The vehicle shows signs of wear commensurate with its age and use.		

## Missing parts

### Description

Equipment - Vehicle key with remote control  
2nd wheel set - 2nd wheel set (Winterräder)

## Previous damages

No.	Previous damage	Extent of damage (Net)
1	Unknown, Provided by user / customer, from 7 Apr 2024	554,74 €
2	Side - left, Provided by user / customer, from 11 Apr 2024	1.202,79 €
3	Side right, Provided by user / customer, from 26 Jun 2024	6.769,70 €

## Repainting

### No. Repainting

- 1 Boot lid / rear door, Professionally carried out, Invoice of repair done Non-existent
- 2 Mudguard - left side, Professionally carried out, Invoice of repair done Non-existent
- 3 Mudguard - right side, Professionally carried out, Invoice of repair done Non-existent
- 4 Bonnet, Professionally carried out, Invoice of repair done Non-existent
- 5 Side panel - rear left side, Professionally carried out, Invoice of repair done Non-existent
- 6 Side panel - rear right side, Professionally carried out, Invoice of repair done Non-existent
- 7 Door - front left side, Professionally carried out, Invoice of repair done Non-existent
- 8 Door - front right side, Professionally carried out, Invoice of repair done Non-existent

## Paint coat thickness measurement

Boot lid / rear door	195 µm	Mudguard - left side	209 µm
Mudguard - right side	215 µm	Bonnet	187 µm
Side panel - rear left side	251 µm	Side panel - rear right side	199 µm
Door - front left side	204 µm	Door - front right side	198 µm

## Order/Scope of order

The order was placed to prepare a sales report for the vehicle described. This includes the following:

- Description of core relevant information about the vehicle
- Documentation of equipment features  
(Delivery by third-party service providers)
- Documentation of damage, defects, missing parts
- Documentation of previous damage, unrepaired previous damage, repainting
- a brief visual or functional inspection of the equipment details if possible.  
(Functional tests of driver assistance systems are not included in the scope of services!)
- a photo documentation of the vehicle



## Basis for the order

This product is based on the Alphabet Fuhrpark GmbH guidelines for vehicle returns and valuations. The expert makes the explicit findings in each individual case objectively within the framework of the specified standards based on his or her own expertise.

The vehicle inspection takes place in a disassembled state.

Damage or defects that can only be detected during disassembly/diagnosis work or through advanced knowledge remain within the scope of the prognosis risk. An extended risk exists for concealed defects caused by fraudulent deception and not identifiable by the expert.

Damage or defects resulting from normal use or wear and tear of the vehicle will be accepted according to the applicable standard.

There was no explicit identification or monetary consideration of the expected features within the product.

Features which in their nature and severity slightly exceed normal use but do not constitute unacceptable damage will be documented and identified under signs of use if necessary.

Damage or defects which, according to the underlying standard, can no longer be attributed to normal use or wear and tear are listed in the product under "Depreciating Factors".

Depending on the product specification, a monetary ID can be provided. If this takes place, the costs can be 100% d or pro rata depending on the vehicle's age and mileage.

## Previous damages

According to available information previous damages were repaired at the vehicle. Traces of repairs, which allow conclusions about the area of repair, were not recognizable during the inspection.





Figure 1: Diagonal front (left)



Figure 2: Diagonal front (right)



Figure 3: Diagonal rear (left)



Figure 4: Diagonal rear (right)



Figure 5: Interior - front



Figure 6: Interior - rear





Figure 7: Instrument cluster



Figure 8: Instrument panel



Figure 9: interior 360° view



Figure 10: Cargo area



Figure 11: VIN



Figure 12: Mounted tyres





Figure 13: Documents



Figure 14: Documents

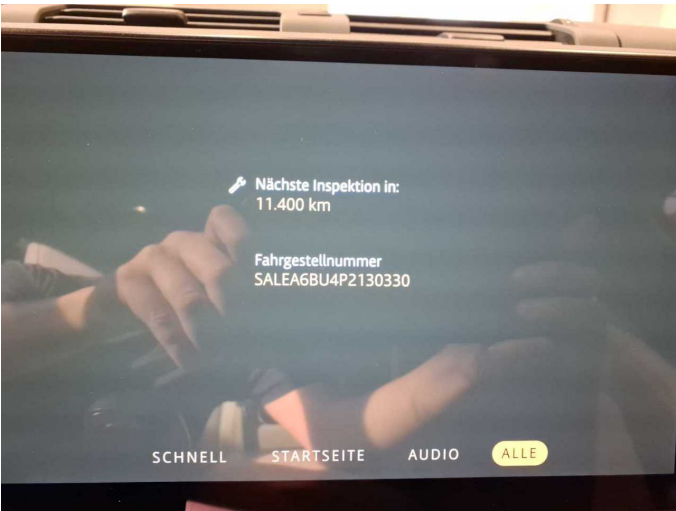


Figure 15: Documents

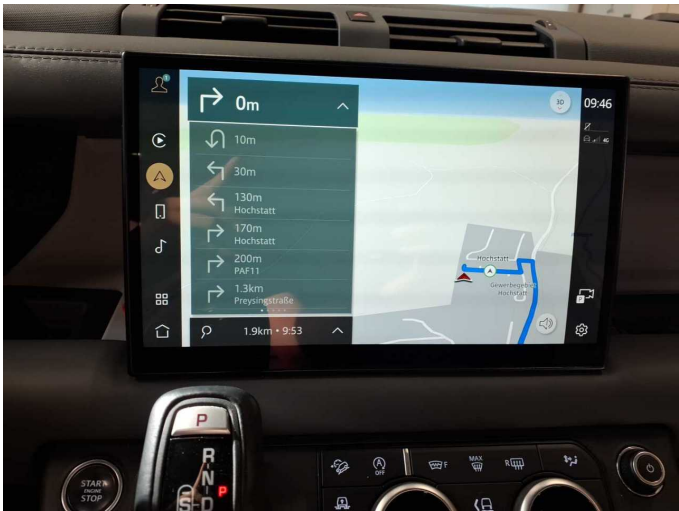


Figure 16: Navigation

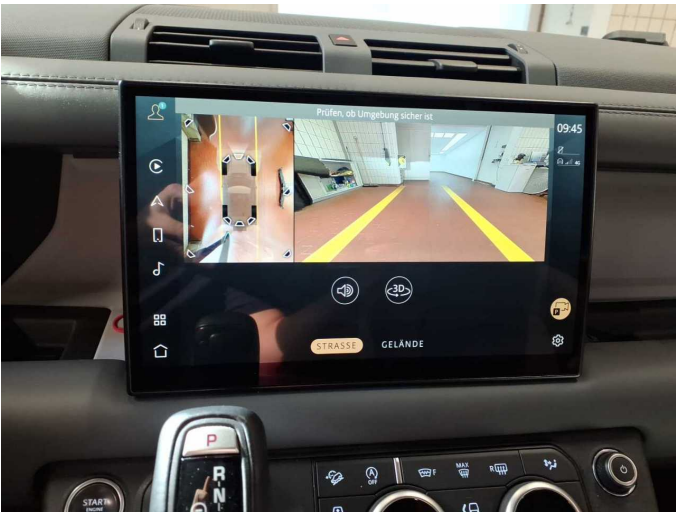


Figure 17: Misc.



Figure 18: Misc.





Figure 19: Misc.



Figure 20: Misc.



Figure 21: Misc.



Figure 22: Misc.



Figure 23: Misc.



Figure 24: Misc.





Figure 25: Misc.



Figure 26: Misc.



Figure 27: Misc.



Figure 28: Misc.



Damage 1: Sill - left side: Sill - Scratch(es) - Smart repair



Damage 1: Sill - left side: Sill - Scratch(es) - Smart repair





**Damage 2:** Door - front left side: Door edge - Scratch(es) - Smart repair



**Damage 2:** Door - front left side: Door edge - Scratch(es) - Smart repair



**Damage 3:** Wheel / tyres: Alloy rim - front right side - Scratched - Smart repair



**Damage 3:** Wheel / tyres: Alloy rim - front right side - Scratched - Smart repair



**Damage 4:** Mudguard - right side: Mudguard - right side - Stone chips - Paint



**Damage 4:** Mudguard - right side: Mudguard - right side - Stone chips - Paint





**Damage 4:** Mudguard - right side: Mudguard - right side - Stone chips - Paint



**Damage 5:** Mudguard - left side: Mudguard - left side - Stone chips - Paint



**Damage 5:** Mudguard - left side: Mudguard - left side - Stone chips - Paint



**Damage 5:** Mudguard - left side: Mudguard - left side - Stone chips - Paint



**Damage 5:** Mudguard - left side: Mudguard - left side - Stone chips - Paint

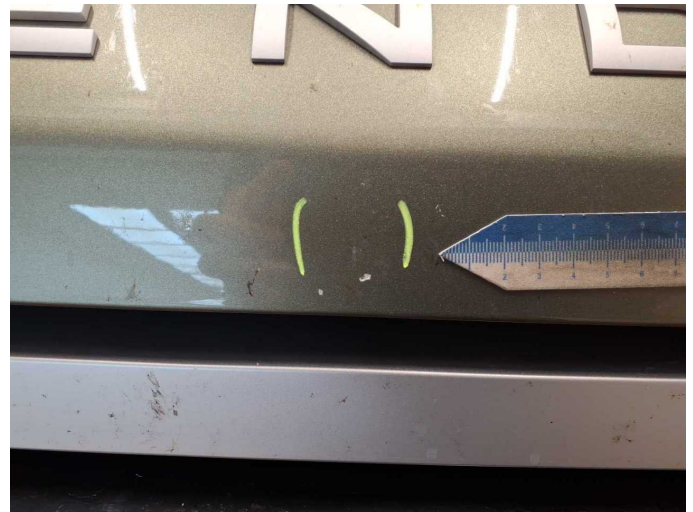


**Damage 6:** Bonnet: Bonnet - Dent / paintcoat damage - Repair and paint





**Damage 6:** Bonnet: Bonnet - Dent / paintcoat damage - Repair and paint



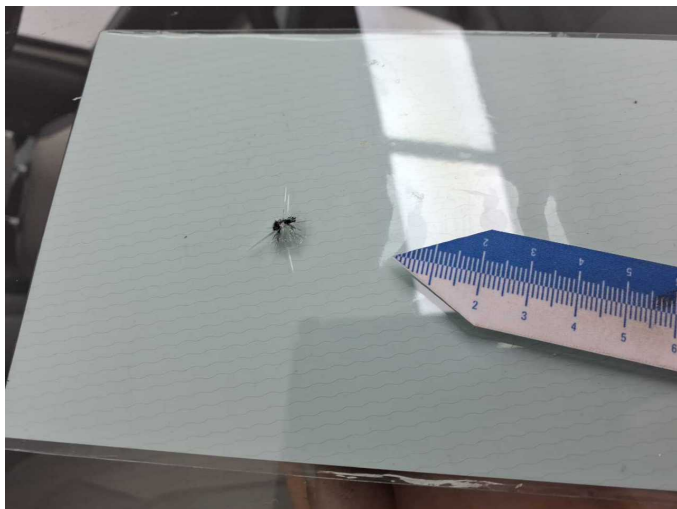
**Damage 6:** Bonnet: Bonnet - Dent / paintcoat damage - Repair and paint



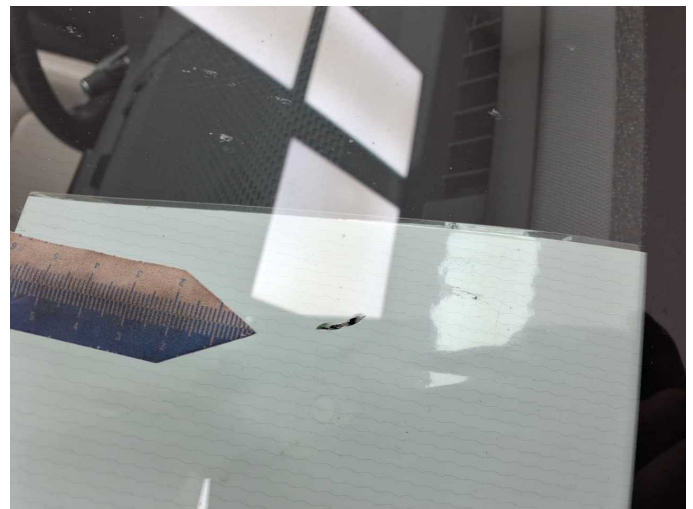
**Damage 6:** Bonnet: Bonnet - Dent / paintcoat damage - Repair and paint



**Damage 7:** Vehicle glazing: Windscreen (mit Rissbildung) - Stone chips - Replace



**Damage 7:** Vehicle glazing: Windscreen (mit Rissbildung) - Stone chips - Replace



**Damage 7:** Vehicle glazing: Windscreen (mit Rissbildung) - Stone chips - Replace



**Damage 7:** Vehicle glazing: Windscreen (mit Rissbildung) - Stone chips - Replace



**Repainting 1:** Boot lid / rear door



**Repainting 2:** Mudguard - left side



**Repainting 3:** Mudguard - right side



**Repainting 4:** Bonnet



**Repainting 5:** Side panel - rear left side





**Repainting 6:** Side panel - rear side



**Repainting 7:** Door - front left side



**Repainting 8:** Door - front right side





# Wartungshistorie

(gemäß Auftraggeber Informationen)

Fahrgestellnummer: SALEA6BU4P2130330

Hersteller / Modell: LAND ROVER LAND ROVER Defender 90 P400 SE

Datum	KM-Stand	Beschreibung
22.05.2024	32.536	Bremsflüssigkeit; Bremsflüssigkeit ern; Motoröl b. Wartung; Ölfilter ern; Regelwartungsdienst; Wartung Sonstiges