



Expertise

Protocol number: 41196429
Order No. / Reference: 25104261
Inspection date: 21 Aug 2025

Manufacturer: Land Rover

Model: Discovery Sport D200 R-Dynamic SE

VIN: SALCA2BN4PH320537



Vehicle details	
Manufacturer / Type / Model / Equipment	
Land Rover Discovery Sport D200 R-Dynamic SE	
Vehicle Identification number	SALCA2BN4PH320537
Mileage (Read)	98,141 km
First registration	1 Aug 2022
Number of holders	1
Next periodical technical inspection	08/2025
(Report not on hand)	
Power / Engine displacement	150 kw / 1,998 ccm
Fuel type / Cylinder	Hybrid Diesel / E / 4
Gearbox / Number of gears	Automatic / 9
Type of drive	All-wheel drive
Type of vehicle	SUV
Colour / colour code	Grey Metallic
Doors / Seats	5 / 5
Upholstery type	Leather
Colour of upholstery	Anthracite
Re/Import	no
Driving readiness	Roadworthy



Vehicle details

Maintenance booklet / proof	digital proof / complete	Next maintenance in	2,050 km
Last maintenance on / at	02/2024 at 66,188 km		
Key is / should be	2 / 2	FZG documents	ZB#2 (B) was available (copy), ZB#1 (S) was not available
		Letter No.	GQ307005
Previous damage / Accident	Detectable	Repainting	Detectable
Inspection conditions	sufficient	Lifting equipment / pit	yes
Test drive	Not performed	Engine function test	Performed
Driving readiness	Roadworthy		
Manufacturer key number/ type code number	1590 / AKN 00075		
Emission standard	EURO6;WLTP;AP;PI/CI; M, N1 I	Fine dust sticker	
Permitted total weight	2,590 kg	Empty weight	

Tyres

Mounted tyres

#	Tyre size	Type of tyre	Manufacturer	Tread depth
1)	235/50 R20 104W	All-season tyres on Light alloy	Pirelli	4mm / 4mm
2)	235/50 R20 104W	All-season tyres on Light alloy	Pirelli	5mm / 5mm

Additional tyres

#	Tyre size	Type of tyre	Manufacturer	Tread depth
1)	235/60 R18 107H	Winter tyres on Light alloy	Continental	3mm / 3mm
2)	235/60 R18 107H	Winter tyres on Light alloy	Continental	6mm / 6mm

Replacement

Typ	Tyre size	Type of tyre	Manufacturer	Tread depth
N	155/85 R18	Summer tyres on Steel		4 mm

Legend: Tread depth information for tires on the left is in the first place, for tires on the right is in the second place on the axle in the direction of travel

Equipment

Standard equipment

- Storage compartment in the center console
- Towing eyes front and rear
- Airbag: Knee airbag for driver
- Airbag: Windowbags (head airbags) for 1st and 2nd row of seats
- Permanent all-wheel drive with Efficient Driveline
- Analogue round instruments with 7" TFT on-board computer
- Autonomous Emergency Braking (AEB)
- Hill Descent Control (HDC)
- Hill start assist
- Roof in body color
- Decor: Shadow Aluminum
- tachometer
- Parking aid front and rear
- Electromechanical power steering (EPAS), speed-dependent
- High beam with automatic dimming (Auto High Beam Assist, AHBA)
- Transmission: 9-speed automatic transmission
- Back window, heater
- Interior rearview mirror with automatic dimming
- ISOFIX attachment points in the rear
- Child safety lock, electric
- Collision warning system when reversing
- Rear headrests (3)
- Cornering Brake Control (CBC)
- LED headlights with LED signature
- Steering column manually adjustable
- Center console with armrest
- Emergency Brake Assist (EBA)
- Package: Online Pack with data plan
- Upholstery: DuoLeather
- Radio accessories: 10" touchscreen
- Radio accessories: Meridian sound system
- Remote
- Rear view camera
- shift paddles on the steering wheel in matt chrome
- Sensor-controlled driving light system
- Seats: Rear bench, 60:40 split
- Sun visors, two-part with illuminated make-up mirrors
- Lane departure warning system
- Start-stop button to turn the engine on/off
- 12V socket on the back of the center console
- Phone: Apple CarPlay
- Terrain Response 2 Automatic
- Torque vectoring
- Traffic sign recognition with adaptive speed limiter
- Roll Control (RSC)
- Central locking with remote control
- ABS including electronic traction control (ETC)
- Airbag: driver and passenger side
- Airbag: Side airbags driver and front passenger
- Perimetric alarm system
- All Terrain Progress Control (ATPC)
- Ambient interior lighting
- Trailer Stability Assist (TSA)
- Attention Assistant
- Exterior mirrors, electrically folding and heated with memory function
- brake light third
- Headliner "Morzine" (fabric) - Ebony
- diesel particulate filter
- Dynamic Stability Control (DSC)
- Front door sills made of aluminum, with R-Dynamic lettering
- Electric window lifter
- Pedestrian protection system
- Adaptive Cruise Control (ACC) with Stop & Go
- Electric tailgate
- Rear window wiper
- ISOFIX child seat attachment - front passenger seat
- Keyless Entry - Keyless access system
- Automatic climate control (2-zone) with air vents
- Collision warning system monitor
- Headrests, front
- Load compartment cover
- Steering wheel: multifunction leather steering wheel
- Automatic headlight range adjustment
- Navigation: Pivi Pro with navigation
- Package: Black Pack
- Electric parking brake (EPB)
- Radio: Digital Radio (DAB+)
- Radio accessories: 1x USB port
- Tire pressure monitoring system (TPMS)
- Wheels: 20" alloy wheels, Style 5076 Satin Dark Grey All Terrain summer tires (8J x 20 with 235/50 R20 tires)
- Secure Tracker
- Seats: Driver's seat 14-way adjustable (12-way electric) with memory function
- Sporty stainless steel pedals
- Start-stop system
- 12 volt sockets in the cargo area
- Phone: Android Auto
- Phone: Bluetooth-enabled phone system with audio streaming
- Blind spot lane assistant including proximity sensor
- Lashing eyes in the cargo area
- Immobiliser



Extra equipment

- Detachable trailer hitch
- Roof rails in black
- Windscreen made of heat-insulating glass
- Wireless charging for smartphones, with signal amplifier
- Paintwork: Premium metallic without roof in contrasting color
- Fog light
- Package: Premium Interior Package (R-Dynamic, Urban Edition)
- Wheels: 18" steel spare wheel, tires 155/85 029NZ
- Roof: Panoramic roof with electric sun visor
- Driver Assistance Package 017TE
- Cup holder 2 front with cover
- Automatic climate control (2-zone) with air vents and temperature control (in the 2nd row of seats)
- Matrix LED headlights with LED signature (Auto High Beam Assist, AHBA) - Adaptive Cornering Lights (AFS) - Adaptive Matrix LED Driving Lights (ADB))
- Package: Winter
- Glazing: Dark tinted windows from B-pillar

Brief expert findings

Documents submitted	At the time of the inspection, the registration certificate Part 2 (letter) was available, but the registration certificate Part 1 (certificate) was not. (Copy)
VIN comparison	The vehicle identification number (VIN) was read from the vehicle and its conformity with the submitted documents was verified during the inspection by the undersigned.
Inspection	The inspection conditions were sufficient for the assessment of the vehicle. Lifting equipment and a pit were available for examining the vehicle.
Test drive	No test drive/maneuvering was carried out during the inspection of the vehicle.
Engine function test	An engine test run was performed.
Driving readiness	The vehicle was drivable at the time of inspection.

Value reducing factors

No.	Component group	Description
1	Vehicle glazing	Windscreen (Steinschlag wurde repariert) - Stone chips - No deduction
2	Wheel / tyres	Tyres - complete set - Differs from the original configuration - No deduction
3	Instrument panel	Indicator light (Reifendruckkontrollleuchte) - on - Diagnosed and repair if necessary
4	Wheel / tyres	Alloy rim - front right side - Scratched - Loss in value
5	Door - rear left side	Door - Scratch(es) - Smart repair
6	Door - rear right side	Door - Scratch(es) - Smart repair
7	Rear bumper	Rear bumper - Scratch(es) - Smart repair
8	Wheel / tyres	Tyre - front - Does not meet the leasing specifications - Replace
9	Side panel - rear left side	Side panel - Scratch(es) - Repair and paint
10	Door - front right side	Door - Scratch(es) - Repair and paint

Wear and tear

No.	Component group	Description
1	Body	Body - Scratch(es) - No deduction
2	Wing mirror - left side	Cap - Scratch(es) - No deduction
3	Sill - left side	Sill - Scratch(es) - No deduction
4	Door - front left side	Door - Scratch(es) - No deduction
5	Boot lid / rear door	Boot lid - Scratch(es) - No deduction
6	Vehicle glazing	Rear window - Scratch(es) - No deduction

The vehicle shows signs of wear commensurate with its age and use.



Previous damages

No.	Previous damage	Extent of damage (Net)
1	Side - left, Provided by user / customer, from 4 Nov 2022	1.824,43 €

Repainting

No. Repainting

- | | |
|---|--|
| 1 | Mudguard - left side, Professionally carried out |
|---|--|

Paint coat thickness measurement

Mudguard - left side	176 µm
----------------------	--------

Order/Scope of order

The order was placed to prepare a sales report for the vehicle described. This includes the following:

- Description of core relevant information about the vehicle
- Documentation of equipment features
(Delivery by third-party service providers)
- Documentation of damage, defects, missing parts
- Documentation of previous damage, unrepaired previous damage, repainting
- a brief visual or functional inspection of the equipment details if possible.
(Functional tests of driver assistance systems are not included in the scope of services!)
- a photo documentation of the vehicle

Basis for the order

This product is based on the Alphabet Fuhrpark GmbH guidelines for vehicle returns and valuations. The expert makes the explicit findings in each individual case objectively within the framework of the specified standards based on his or her own expertise.

The vehicle inspection takes place in a disassembled state.

Damage or defects that can only be detected during disassembly/diagnosis work or through advanced knowledge remain within the scope of the prognosis risk. An extended risk exists for concealed defects caused by fraudulent deception and not identifiable by the expert.

Damage or defects resulting from normal use or wear and tear of the vehicle will be accepted according to the applicable standard.

There was no explicit identification or monetary consideration of the expected features within the product.

Features which in their nature and severity slightly exceed normal use but do not constitute unacceptable damage will be documented and identified under signs of use if necessary.

Damage or defects which, according to the underlying standard, can no longer be attributed to normal use or wear and tear are listed in the product under "Depreciating Factors".

Depending on the product specification, a monetary ID can be provided. If this takes place, the costs can be 100% d or pro rata depending on the vehicle's age and mileage.

Previous damages

According to available information previous damages were repaired at the vehicle. Traces of repairs, which allow conclusions about the area of repair, were not recognizable during the inspection.

Comments

- Winterradsatz ist kein Bestandteil des Auslieferungsumfangs.



Figure 1: Diagonal front (left)



Figure 2: Diagonal front (right)



Figure 3: Diagonal rear (left)



Figure 4: Diagonal rear (right)



Figure 5: Interior - front



Figure 6: Interior - rear



Figure 7: Instrument cluster



Figure 8: Instrument panel



Figure 9: interior 360° view



Figure 10: Cargo area



Figure 11: VIN



Figure 12: Mounted tyres



Figure 13: Documents



Figure 14: Documents



Figure 15: Additional tyres

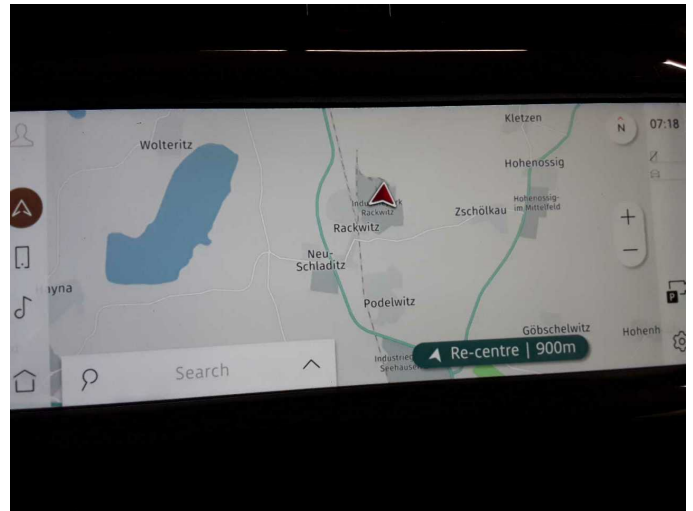


Figure 16: Navigation

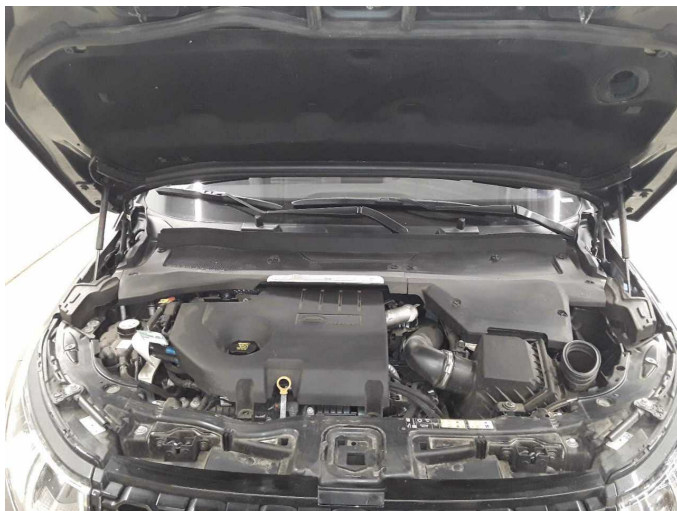


Figure 17: Misc.



Figure 18: Misc.



Figure 19: Misc.



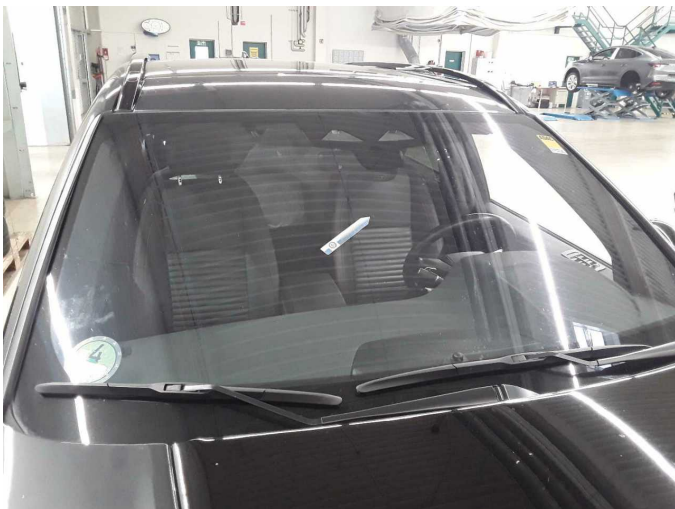
Figure 20: Misc.



Figure 21: Misc.



Figure 22: Misc.



Damage 1: Vehicle glazing: Windscreen (Steinschlag wurde repariert) - Stone chips - No deduction



Damage 1: Vehicle glazing: Windscreen (Steinschlag wurde repariert) - Stone chips - No deduction



Damage 1: Vehicle glazing: Windscreen (Steinschlag wurde repariert) - Stone chips - No deduction



Damage 1: Vehicle glazing: Windscreen (Steinschlag wurde repariert) - Stone chips - No deduction



Damage 3: Instrument panel: Indicator light (Reifendruckkontrollleuchte) - on - Diagnosed and repair if necessary



Damage 3: Instrument panel: Indicator light (Reifendruckkontrollleuchte) - on - Diagnosed and repair if necessary



Damage 4: Wheel / tyres: Alloy rim - front right side - Scratched - Loss in value



Damage 4: Wheel / tyres: Alloy rim - front right side - Scratched - Loss in value



Damage 4: Wheel / tyres: Alloy rim - front right side - Scratched - Loss in value



Damage 5: Door - rear left side: Door - Scratch(es) - Smart repair



Damage 5: Door - rear left side: Door - Scratch(es) - Smart repair



Damage 6: Door - rear right side: Door - Scratch(es) - Smart repair



Damage 6: Door - rear right side: Door - Scratch(es) - Smart repair



Damage 7: Rear bumper: Rear bumper - Scratch(es) - Smart repair



Damage 7: Rear bumper: Rear bumper - Scratch(es) - Smart repair



Damage 7: Rear bumper: Rear bumper - Scratch(es) - Smart repair



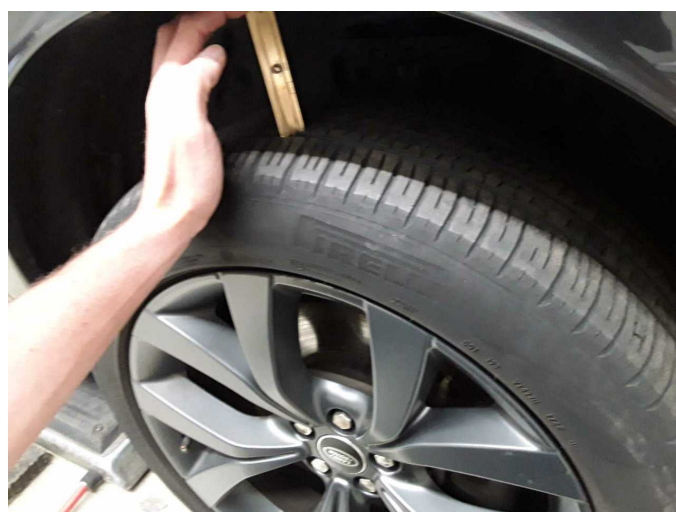
Damage 7: Rear bumper: Rear bumper - Scratch(es) - Smart repair



Damage 7: Rear bumper: Rear bumper - Scratch(es) - Smart repair



Damage 7: Rear bumper: Rear bumper - Scratch(es) - Smart repair



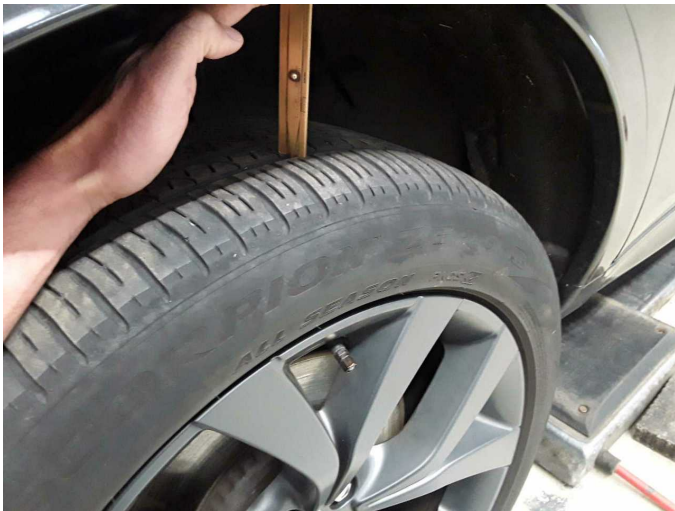
Damage 8: Wheel / tyres: Tyre - front - Does not meet the leasing specifications - Replace



Damage 8: Wheel / tyres: Tyre - front - Does not meet the leasing specifications - Replace



Damage 8: Wheel / tyres: Tyre - front - Does not meet the leasing specifications - Replace



Damage 8: Wheel / tyres: Tyre - front - Does not meet the leasing specifications - Replace



Damage 9: Side panel - rear left side: Side panel - Scratch(es) - Repair and paint



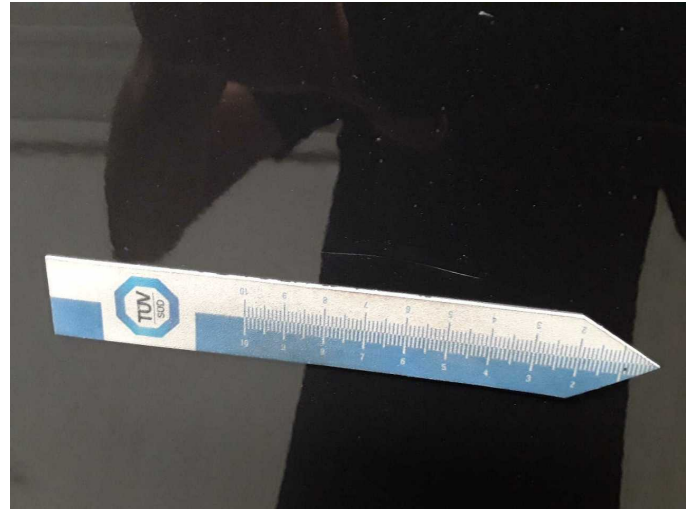
Damage 9: Side panel - rear left side: Side panel - Scratch(es) - Repair and paint



Damage 9: Side panel - rear left side: Side panel - Scratch(es) - Repair and paint



Damage 10: Door - front right side: Door - Scratch(es) - Repair and paint



Damage 10: Door - front right side: Door - Scratch(es) - Repair and paint



Damage 10: Door - front right side: Door - Scratch(es) - Repair and paint



Damage 10: Door - front right side: Door - Scratch(es) - Repair and paint



Damage 10: Door - front right side: Door - Scratch(es) - Repair and paint



Wear and tear 1: Body: Body - Scratch(es) - No deduction



Mudguard - left side: 176 µm



Mudguard - left side: 176 µm



Wartungshistorie

(gemäß Auftraggeber Informationen)

Fahrgestellnummer: SALCA2BN4PH320537

Hersteller / Modell: LAND ROVER LAND ROVER Discovery Sport D200 R-Dynamic SE

Datum	KM-Stand	Beschreibung
20.05.2025	93.674	Bremsbelagfühler ern; Bremsscheiben + Klötze h
21.02.2024	66.188	Bremsflüssigkeit; Kraftstofffilter ern; Luftfiltereinsatz ern; Motoröl b. Wartung; Ölfilter ern; Regelwartungsdienst; Wartung Sonstiges
31.03.2023	33.265	Bremsflüssigkeit; Motoröl b. Wartung; Ölfilter ern; Regelwartungsdienst