



# TOYOTA Auris

## Auris 1.33 Dual-VVT-i

VIN NO NMTJT56E30R003224  
Registration Number E30R003224



MOT Date	Number of Owners	Number of Keys	Odometer Reading
-	2	2	208994 km
Last Service	Last Service Mileage	First Registration Date	Country First Registered
-	-	2009-03-10	-

### Inspection Report Summary

Customer	BCA Online	Report Number	P20250819122929
Inspection Date / Place	2025-08-19 / BCA Berlin	Cosmetic Grade	5

### Vehicle Summary

Vehicle Condition	Runner	VAT Type	Margin
Fuel Type	Petrol	Road Worthy	Unknown
Colour	White	Engine Size (cc)	1329
Engine Size	1.3	No of Doors	5
Body Type	Sedan	Drive Train	Front
Seat Colour		No of Seats	5
Seat Covering Name	Schwarz	Seat Covering	Cloth
Charging Cables		NEDC CO2 Rating (q/km)	125
Gearbox Type	Manual		

### Vehicle History & Documents

Service Book Available	Present	Next Service Mileage	km
Previous Usage		Imported	No
Manufacturer Warrenty			









## Equipment

Tinted Glass	Anti-lock braking	Remote central locking	CD Player
Radio	Alloys wheels	Remote adjusting wing mirrors	Stability control
Central locking			

## Equipment Details

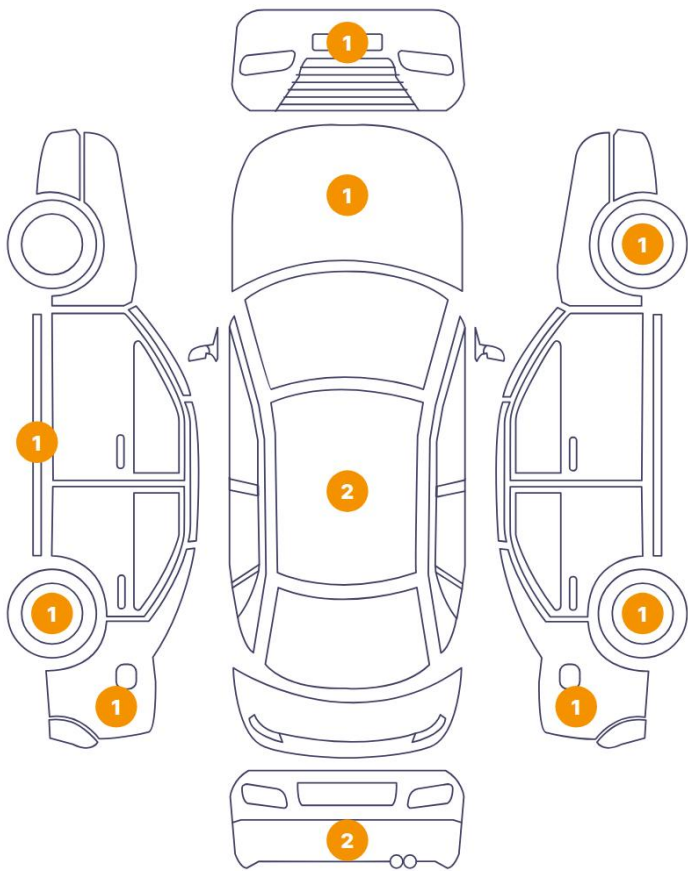
Air Conditioning	Yes	Alloy Wheel Size	16
Extra Wheel / Tyre Set	Winter Tyres - Steel		

## Wheels & Tyres

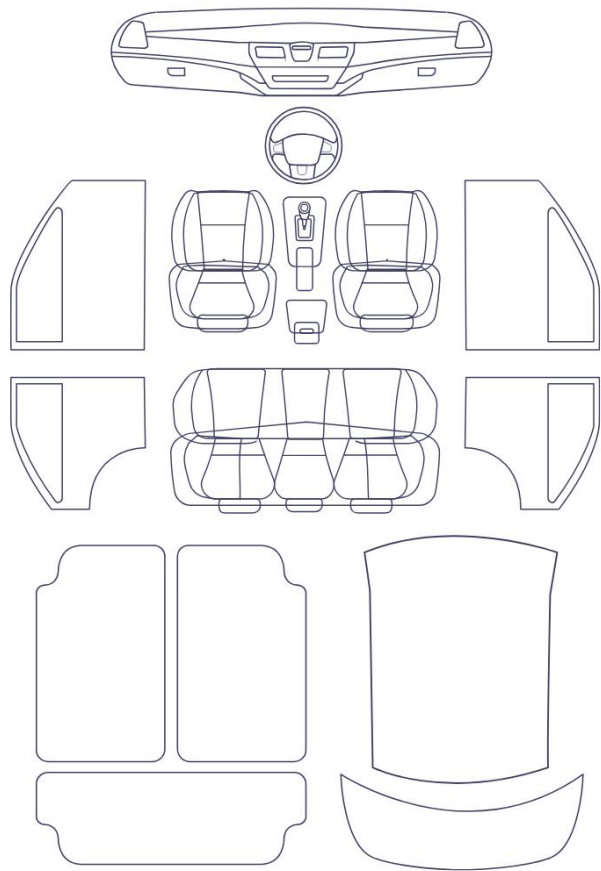
Extra Wheel - 1 Tyre Depth	7	Extra Wheel - 2 Tyre Depth	7
Extra Wheel - 3 Tyre Depth	6	Extra Wheel - 4 Tyre Depth	5
Right Front Tyre Depth	5	Left Front Tyre Depth	5
Right Rear Tyre Depth	5	Left Rear Tyre Depth	5

Cosmetic Damage

12 Schäden



0 Schäden

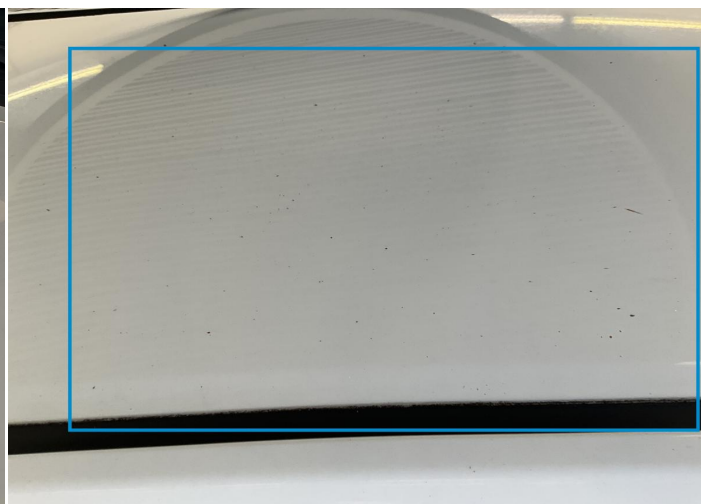


Component		Damage	Comments
1	Hood	Paint / Chipping	
2	Roof	Bodywork / Dent / Dent	
3	Rocker Panel / Center Left	Paint / Scratch / Scuff	
4	Side Panel / Back Left	Paint / Scratch / Scuff	
5	Rim / Back Left	Out of Bodywork / Scratch	
6	Bumper / Back	Bodywork / Breakage / Crack	
7	Roof	Bodywork / Dent / Dent	
8	Bumper / Back	Bodywork / Breakage / Crack	
9	Side Panel / Back Right	Bodywork / Breakage / Crack	
10	Rim / Back Right	Out of Bodywork / Scratch	
11	Bumper / Front	Paint / Scratch / Scuff	
12	Rim / Front Right	Out of Bodywork / Scratch	

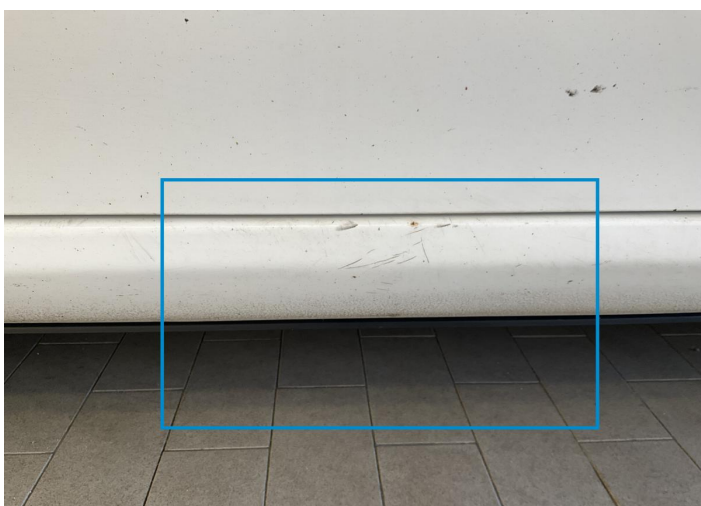




1. Hood  
Paint / Chipping -



2. Roof  
Bodywork / Dent / Dent -



3. Rocker Panel / Center Left  
Paint / Scratch / Scuff -



4. Side Panel / Back Left  
Paint / Scratch / Scuff -



5. Rim / Back Left  
Out of Bodywork / Scratch -



6. Bumper / Back  
Bodywork / Breakage / Crack -



7. Roof  
Bodywork / Dent / Dent -



8. Bumper / Back  
Bodywork / Breakage / Crack -



9. Side Panel / Back Right  
Bodywork / Breakage / Crack -



10. Rim / Back Right  
Out of Bodywork / Scratch -



11. Bumper / Front  
Paint / Scratch / Scuff -



12. Rim / Front Right  
Out of Bodywork / Scratch -



## Mechanical Condition

### Control Lights

ABS Warning Light	✓	ESP Fault/Traction Control Malfunction Light	✓
Airbag Warning Light	✓	Oil Pressure Warning Light	✓
Brake Warning Light	✓	Alternator / Battery	✓
No Dashboard Lights	✓	Display Defect	✓

### Engine

Engine Status / EML	✓	Engine Leak Visible	✓
Engine Starts	✓		

### Levels

Brakes Fluid	✓	Coolant Fluid	✓
--------------	---	---------------	---

### Equipments Test

Main & Spare Keys Functioning	✓	Audio Equipment	✓
AC / Heating System	✓	Other Equipments	✓

## Test Drive Inspection

### Engine

Engine Noise	✓	The Gears Scratch / Skip / Abnormal Operation	✓
Fume Quantity	✓	Power Loss	✓

### Steering Wheel

Steering   Noise / Anomaly	!
----------------------------	---

### Brake

Brake System Anomaly	✓
----------------------	---

### Clutch

Clutch Functioning	!
--------------------	---

### General

Test Driven Status	✓
--------------------	---

- ✔ *No troubles detected, good condition or correct tests, according to vehicle age and mileage*
- ❗ *Damages or malfunction detected that requires repairs by the buyer*
- NA *Not applicable*
- ☐ *Not tested*

## Disclaimer

---

*Please also note the "UserGuide condition report", which shows the scope of the vehicle description.*

[User Guide](#)