



HYUNDAI i20

i20 1.2

VIN NO NLHBA51BAFZ342596

Registration Number BAFZ342596



MOT Date

2025-10-01

Last Service

2024-10-25

Number of Owners

2

Last Service Mileage

112933

Number of Keys

2

First Registration Date

2014-10-28

Odometer Reading

120984 km

Country First Registered

Germany

Inspection Report Summary

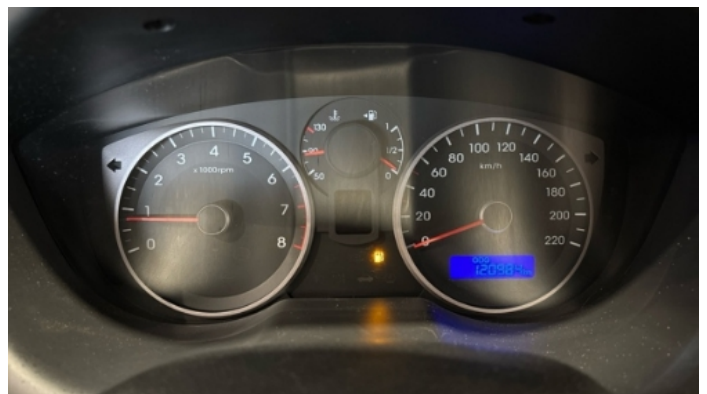
Customer	BCA Online	Report Number	P20250627115026
Inspection Date / Place	2025-06-27 / BCA Oberndorf	Cosmetic Grade	3

Vehicle Summary

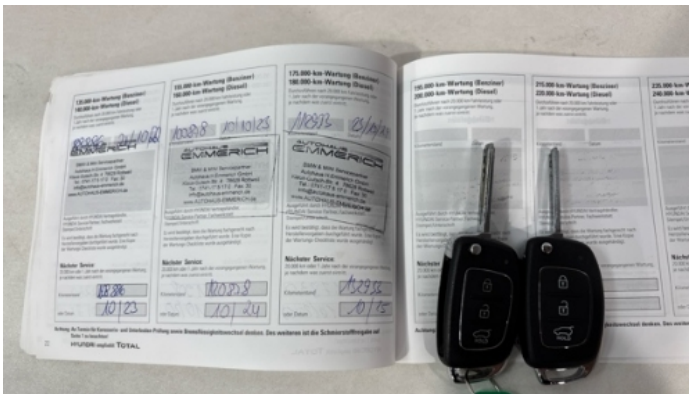
Vehicle Condition	Runner	VAT Type	Margin
Fuel Type	Petrol	Road Worthy	Yes
Colour	White	Engine Size (cc)	1248
Engine Size	1.2	No of Doors	5
Body Type	Sedan	Drive Train	Front
Seat Colour		No of Seats	5
Seat Covering Name	Schwarz	Seat Covering	Cloth
Charging Cables		NEDC CO2 Rating (q/km)	114
Gearbox Type	Manual		

Vehicle History & Documents

Service Book Available	Present	Next Service Mileage	km
Previous Usage		Imported	No
Manufacturer Warrenty			







Equipment

Tinted Glass	Airbag Status	Anti-lock braking	Bluetooth telephone interface
Front fog lamps	Remote central locking	Stability control	Central locking
Radio	USB Socket	Alloys wheels	Auxiliary Socket
Cruise control	Remote adjusting wing mirrors	Split folding rear seats	CD Player
Leather steering wheel	Rear parking sensors		

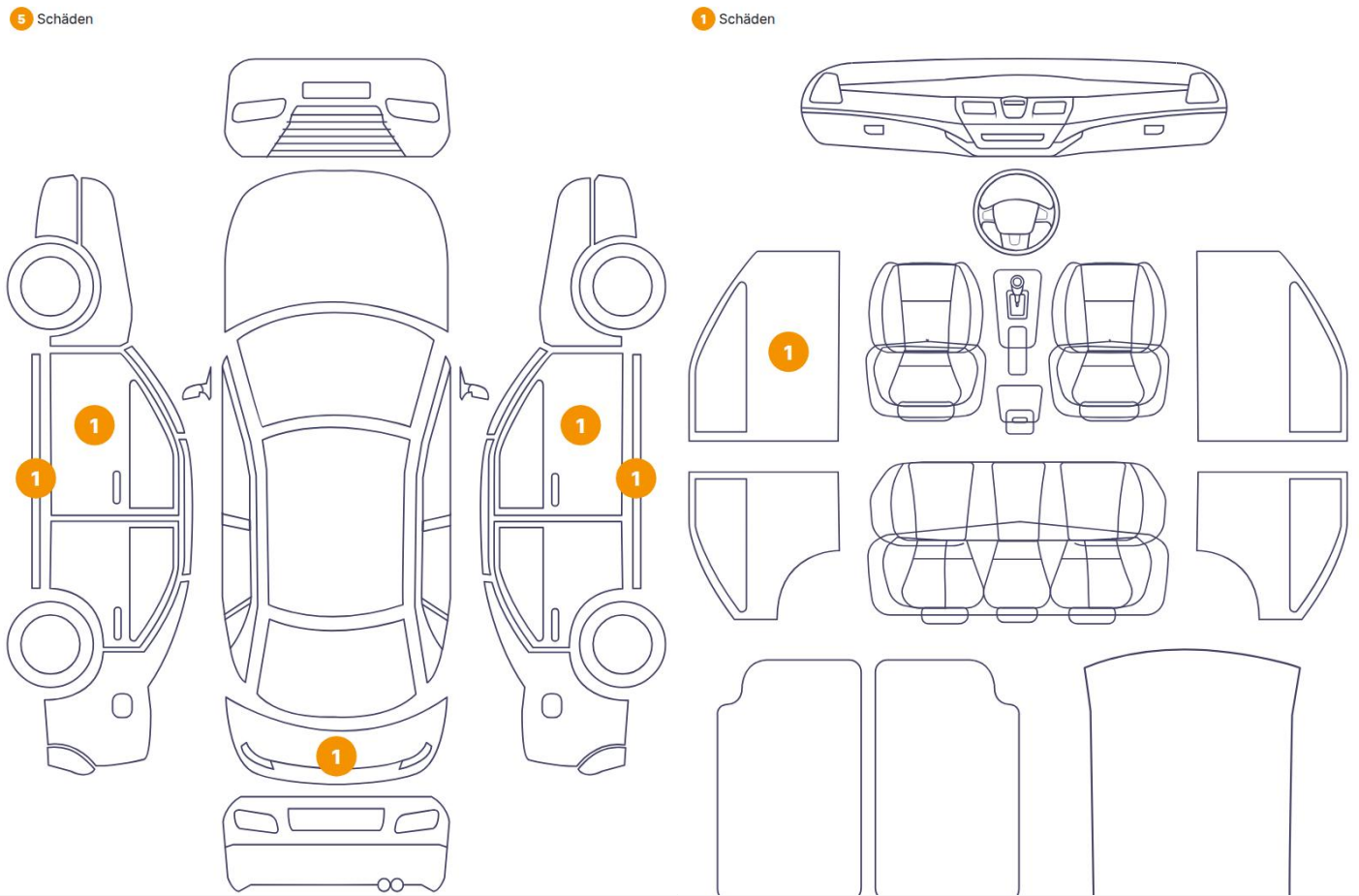
Equipment Details

Air Conditioning	Yes	Alloy Wheel Size	15
Seat Heating	Front		

Wheels & Tyres

Right Front Tyre Depth	5	Left Front Tyre Depth	5
Right Rear Tyre Depth	5	Left Rear Tyre Depth	5

Cosmetic Damage



Component		Damage	Comments
1	Mirror / Front Left	Paint / Scratch / Scuff	
2	Rocker Panel / Center Left	Paint / Scratch / Line	
3	Panel Filling / Front Left	Interior / Scraped	
4	Tailgate	Paint / Corrosion	
5	Mirror / Front Right	Paint / Scratch / Scuff	
6	Rocker Panel / Center Right	Paint / Scratch / Line	



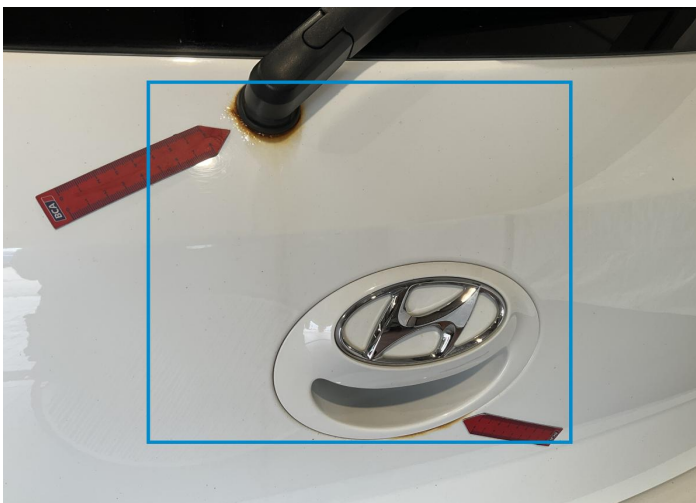
1. Mirror / Front Left
Paint / Scratch / Scuff -



2. Rocker Panel / Center Left
Paint / Scratch / Line -



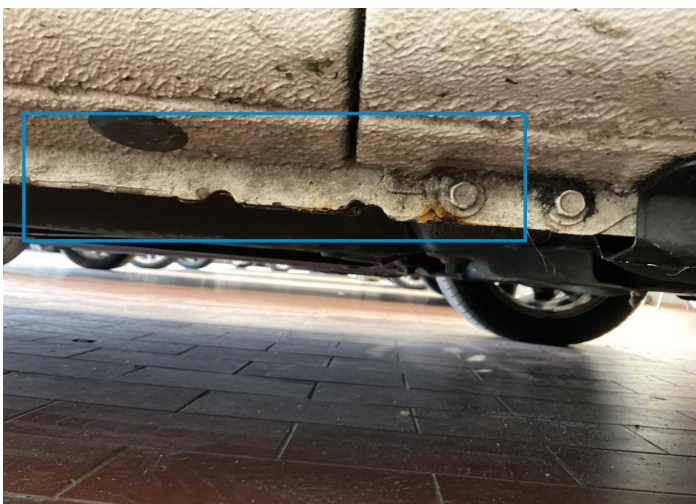
3. Panel Filling / Front Left
Interior / Scraped -



4. Tailgate
Paint / Corrosion -



5. Mirror / Front Right
Paint / Scratch / Scuff -



6. Rocker Panel / Center Right
Paint / Scratch / Line -

Mechanical Condition

Control Lights

Display Defect	✓	Service Light	✓
ABS Warning Light	✓	ESP Fault/Traction Control Malfunction Light	✓
Airbag Warning Light	✓	Oil Pressure Warning Light	✓
Brake Warning Light	✓	Power Steering Warning Light	✓
Alternator / Battery	✓	No Dashboard Lights	✓
Tire Pressure Monitoring System	✓		

Equipments Test

Central Locking	✓	Main & Spare Keys Functioning	✓
Electric Windows	✓	Audio Equipment	✓
Parking Sensors / Cameras Functioning	✓	AC / Heating System	✓
Other Equipments	✓		

Engine

Engine Status / EML	✓	Engine Leak Visible	✓
Engine Starts	✓		

Gearbox

Gear Box	✓
----------	---

Levels

Brakes Fluid	✓	Coolant Fluid	✓
--------------	---	---------------	---

Test Drive Inspection

Steering Wheel

Steering | Noise / Anomaly

Engine

Engine Noise The Gears Scratch / Skip / Abnormal Operation

Fume Quantity Power Loss

Clutch

Clutch Functioning

Brake

Brake System Anomaly

General

Test Driven Status Not Performed

- No troubles detected, good condition or correct tests, according to vehicle age and mileage
- Damages or malfunction detected that requires repairs by the buyer
- Not applicable
- Not tested

Disclaimer

Please also note the "UserGuide condition report", which shows the scope of the vehicle description. [User Guide](#)