



## FORD Ka+ Ka+ 1.2 Ti-VCT

VIN NO MAJUXXMTKUH79053

Registration Number TKUH79053



MOT Date



Last Service

2019-09-06

Number of Owners



Last Service Mileage

25200

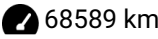
Number of Keys



First Registration Date

2017-05-31

Odometer Reading



Country First Registered



### Inspection Report Summary

Customer	BCA Online	Report Number	P20250925125950
Inspection Date / Place	2025-09-25 / ARS Altmann AG Wolnzach	Cosmetic Grade	3

### Vehicle Summary

Vehicle Condition	Runner	VAT Type	Margin
Fuel Type	Petrol	Road Worthy	Yes
Colour	Orange	Engine Size (cc)	1196
Engine Size	1.2	No of Doors	5
Body Type	Sedan	Drive Train	Front
Seat Colour		No of Seats	5
Seat Covering Name		Seat Covering	Cloth
Charging Cables		NEDC CO2 Rating (q/km)	114
Gearbox Type	Manual		

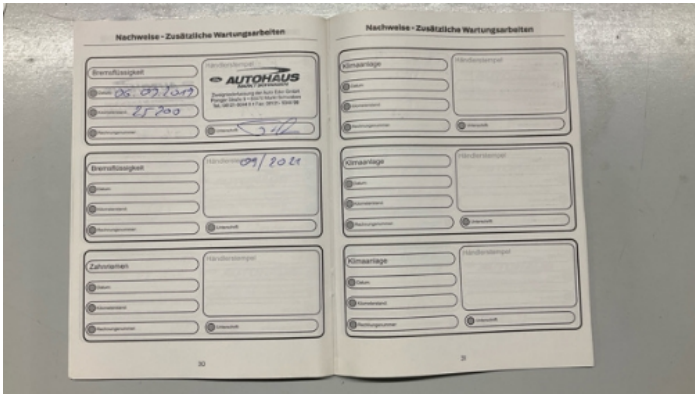
### Vehicle History & Documents

Service Book Available	Present	Next Service Mileage	km
Previous Usage		Imported	No
Manufacturer Warrenty			









### Equipment

USB Socket	Alloys wheels	Auxiliary Socket	Remote central locking
Central locking	Radio	Airbag Status	Anti-lock braking
Remote adjusting wing mirrors	CD Player	Leather steering wheel	Rear parking sensors

### Equipment Details

Air Conditioning	Yes	Alloy Wheel Size	15
Extra Wheel / Tyre Set	Winter Tyres - Steel	Seat Heating	Front

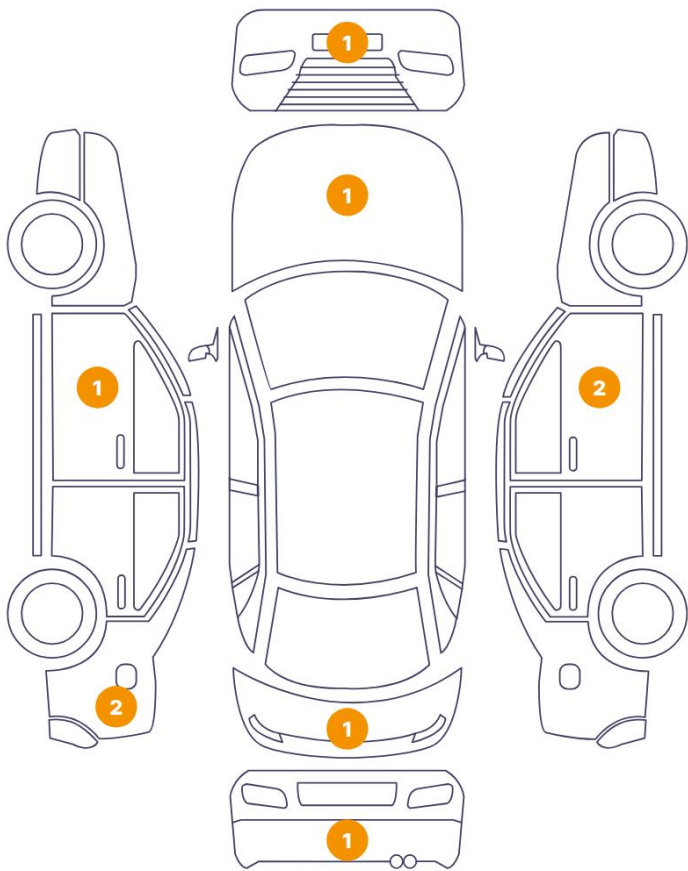
### Wheels & Tyres

Extra Wheel - 1 Tyre Depth	5	Extra Wheel - 2 Tyre Depth	5
Extra Wheel - 3 Tyre Depth	4	Extra Wheel - 4 Tyre Depth	4
Right Front Tyre Depth	5	Left Front Tyre Depth	5
Right Rear Tyre Depth	5	Left Rear Tyre Depth	5



Cosmetic Damage

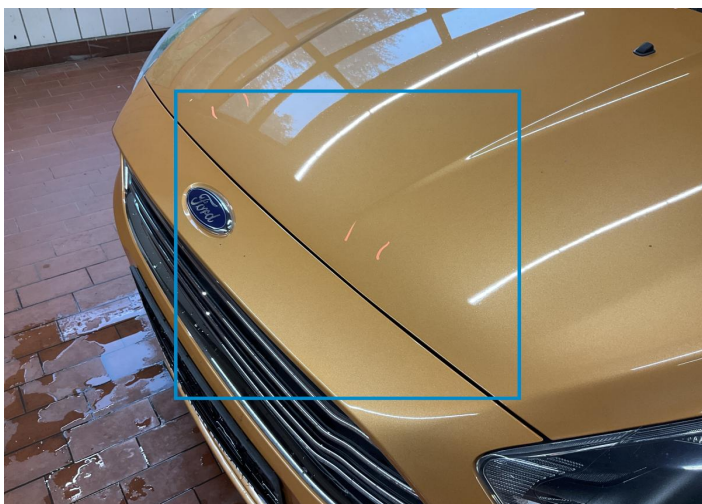
9 Schäden



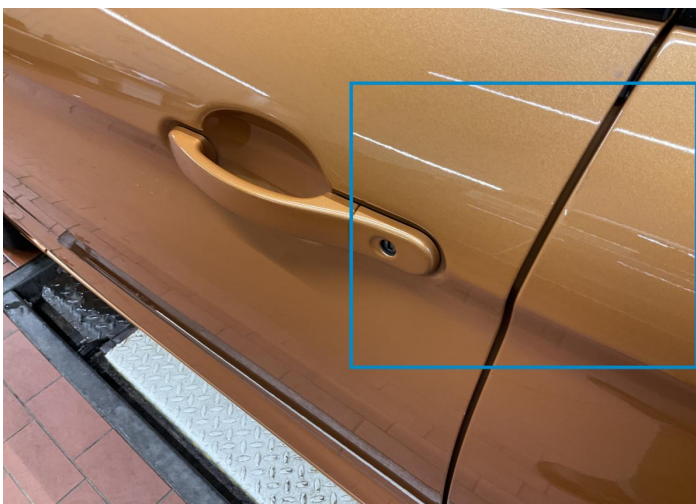
0 Schäden



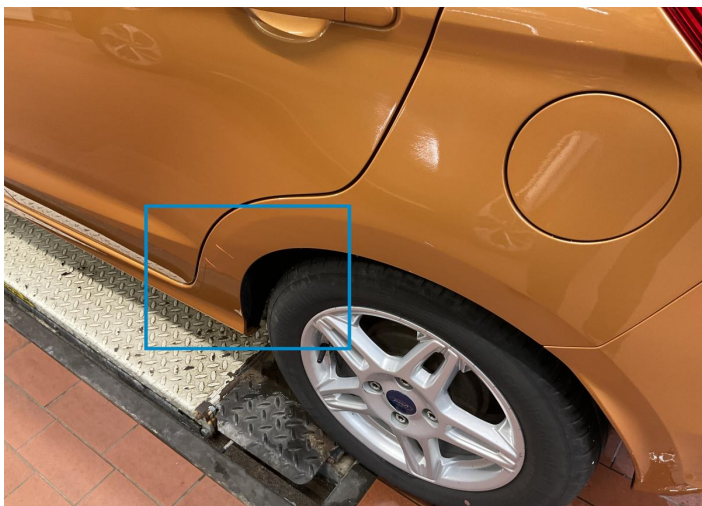
Component	Damage	Comments
1 Hood	Bodywork / Dent / Dent	
2 Door / Front Left	Paint / Scratch / Scuff	
3 Side Panel / Back Left	Bodywork / Dent / Dent	
4 Side Panel / Back Left	Paint / Scratch / Scuff	
5 Bumper / Back	Paint / Scratch / Scuff	
6 Tailgate	Bodywork / Dent / Dent	
7 Door Handle / Front Right	Paint / Scratch / Scuff	
8 Mirror Shell / Front Right	Paint / Scratch / Scuff	
9 Bumper / Front	Paint / Stone Chip	



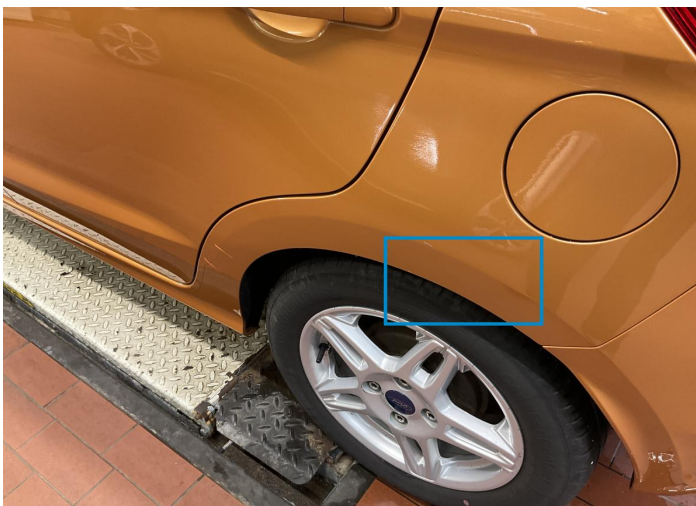
1. Hood  
Bodywork / Dent / Dent -



2. Door / Front Left  
Paint / Scratch / Scuff -



3. Side Panel / Back Left  
Bodywork / Dent / Dent -



4. Side Panel / Back Left  
Paint / Scratch / Scuff -



5. Bumper / Back  
Paint / Scratch / Scuff -



6. Tailgate  
Bodywork / Dent / Dent -





7. Door Handle / Front Right  
Paint / Scratch / Scuff -



8. Mirror Shell / Front Right  
Paint / Scratch / Scuff -



9. Bumper / Front  
Paint / Stone Chip -



## Mechanical Condition

### Control Lights

ABS Warning Light	✓	Airbag Warning Light	✓
Oil Pressure Warning Light	✓	Brake Warning Light	✓
Power Steering Warning Light	✓	Alternator / Battery	✓
No Dashboard Lights	✓	Display Defect	✓
Service Light	!	Tire Pressure Monitoring System	✓

### Engine

Engine Status / EML	✓	Engine Leak Visible	✓
Engine Starts	✓		

### Gearbox

Gear Box	✓
----------	---

### Levels

Brakes Fluid	✓	Coolant Fluid	✓
--------------	---	---------------	---

### Equipments Test

Central Locking	✓	Main & Spare Keys Functioning	✓
Electric Windows	✓	Audio Equipment	✓
Parking Sensors / Cameras Functioning	✓	AC / Heating System	✓

## Test Drive Inspection

Steering Wheel			
Steering   Noise / Anomaly		✔	
Engine			
Engine Noise	✔	The Gears Scratch / Skip / Abnormal Operation	✔
Fume Quantity	✔	Power Loss	✔
Brake			
Brake System Anomaly		✔	
Clutch			
Clutch Functioning		✔	
General			
Test Driven Status		✔	
✔ <i>No troubles detected, good condition or correct tests, according to vehicle age and mileage</i>			
! <i>Damages or malfunction detected that requires repairs by the buyer</i>			
NA <i>Not applicable</i>			
= <i>Not tested</i>			

## Disclaimer

Please also note the "UserGuide condition report", which shows the scope of the vehicle description. [User Guide](#)