



Expertise

Protocol number: 41688844
Order No. / Reference: 25178418
Inspection date: 25 Sept 2025

Manufacturer: Volvo	Model: XC60 T6 AWD Recharge Geartronic Inscription
VIN: LYVUZH1VDNB062667	



Vehicle details	
Manufacturer / Type / Model / Equipment	
Volvo XC60 T6 AWD Recharge Geartronic Inscription	
Vehicle Identification number	LYVUZH1VDNB062667
Mileage (Read)	80,481 km
First registration	25 Jul 2022
Number of holders	1
Power / Engine displacement	186 kw / 1,969 ccm
Fuel type / Cylinder	Hybr.B/E ext. edition / 4
Gearbox / Number of gears	Automatic / 8
Type of drive	All-wheel drive
Type of vehicle	SUV
Colour / colour code	Crystal Weiß-Perleffekt
Doors / Seats	5 / 5
Upholstery type	Artificial leather
Colour of upholstery	White
Vehicle with smoke odor	Yes (ozone treated)



Vehicle details

Maintenance booklet / proof	Available / complete	Next maintenance in	302 Tag(e)
Last maintenance on / at	07/2025 at 80,085 km		
Key is / should be	2 / 2	FZG documents	ZB#2 (B) was available (copy), ZB#1 (S) was not available
		Letter No.	GJ551842
Previous damage / Accident	None detectable	Repainting	None detectable
Inspection conditions	sufficient	Lifting equipment / pit	yes
Test drive	Not performed	Engine function test	Performed
Manufacturer key number/ type code number	9101 / BRS 00015		
Emission standard	EURO6;WLTP;AP;PI/CI; M, N1 I	Fine dust sticker	
Permitted total weight	2,660 kg	Empty weight	

Tyres

Mounted tyres

#	Tyre size	Type of tyre	Manufacturer	Tread depth
1)	235/55 R19 105V	Summer tyres on Light alloy	Continental	5mm / 5mm
2)	235/55 R19 105V	Summer tyres on Light alloy	Continental	5mm / 5mm

Additional tyres

#	Tyre size	Type of tyre	Manufacturer	Tread depth
1)	235/60 R18 107H	Winter tyres on Light alloy	Continental	6mm / 6mm
2)	235/60 R18 107H	Winter tyres on Light alloy	Continental	6mm / 6mm

Replacement

Typ	Tyre size	Type of tyre	Manufacturer	Tread depth
	Tirefit	Expiration date 04/2026		

Legend: Tread depth information for tires on the left is in the first place, for tires on the right is in the second place on the axle in the direction of travel

Equipment

Standard equipment

- ABS - Anti-lock braking system (with EBD)
- Airbag, passenger side can be switched off
- Airbag, side airbags for driver and front passenger and curtain/shoulder airbags (IC) for all occupants
- Aluminum door sills with Recharge lettering, front
- Aluminum roof rails (integrated)
- Android infotainment system (9" touchscreen (22.9 cm diagonal) - Bluetooth hands-free system including audio streaming - Digital vehicle manual - Digital radio reception (DAB+) - 2 USB-C ports (compatible with Apple iPod/iPhone/iPad))
- Automatic tailgate (electric)
- Central locking with two remote controls and integrated emergency keys (automatic locking of the doors while driving (can be deactivated) - convenient opening/closing of the side windows and, if applicable, sunroof via remote control - panic function integrated in the remote control)
- Chrome applications in the front bumper
- Chrome applications on the rear of the vehicle
- Chrome trim strip in the door sill area with Recharge lettering
- Digital instrumentation 2nd generation (full-graphic 12.3" driver display (31.2 cm diagonal) with two variable circular instruments and information display (e.g. for navigation and map view))
- Driver and passenger side airbags with two-stage deployment system
- Electric windows front and rear (with auto-down and auto-up function)
- Electrically foldable exterior mirrors
- Electronic differential lock
- First aid kit and warning triangle
- Gear lever made of Swedish crystal glass by Orrefors
- Glazing: Color glazing
- Headrests (5) front and rear
- Hill Start Assist (HSA)
- Immobilizer (deactivation of the high-voltage battery in the event of a collision)
- Indicators (LED) integrated in exterior mirrors
- Interior and exterior mirrors automatically dimming
- Interior lighting (headlining, front reading lights, front ambient lighting, front footwell, storage compartment behind center console, glove compartment and luggage compartment)
- Keyless Drive (electronic access system) with sensor-controlled tailgate, illuminated door handles and floor lights)
- Lashing eyes in the luggage compartment (foldable)
- Load compartment blind
- Loading box under the load compartment floor
- Luggage compartment partition net
- On-board computer (with vehicle control functions)
- 12 volt connection at the front
- 12 volt connection in the luggage compartment
- Acoustic Vehicle Alerting System (AVAS) (Acoustic pedestrian/cyclist protection through artificially generated driving noises in the speed range up to 20 km/h)
- Airbag, knee airbag for driver
- All-wheel drive (AWD) (depending on driving mode)
- Ambient lighting (Extended interior lighting with: - Ambient lighting front and rear - Exit lights front and rear - Work light on the tailgate - Illuminated door pockets and door openers front and rear - Footwell lighting rear - Reading lights rear)
- Automatic climate control with separate temperature control for driver and front passenger (and additional ventilation nozzles for the 2nd row of seats (integrated in the B-pillar))
- Automatic emergency braking (emergency braking mechanism after the airbags or belt tensioners are deployed to prevent secondary accidents)
- Child safety lock (rear doors)
- CleanZone air quality system with activated carbon filter (automatic air recirculation and pre-ventilation of the interior when the vehicle is unlocked)
- Condensation sensor for automatic activation of the defroster function
- Drive Mode (driving mode settings for engine, transmission, steering, brakes and chassis: Hybrid, Pure, AWD, Off Road, Power)
- Electronic Stability Control (ESC) - Electronic Stability Control
- Exterior mirrors electrically adjustable and heated
- Front center armrest with integrated storage compartment and cup holders
- Google Services with Navigation (navigation function via Google Maps, Google Assistant, Google Play Store and unlimited data volume (includes data volume for map updates, app downloads and streaming services) for the first 4 years)
- Hill Descent Control HDC
- Intelligent driver information system (delays incoming calls or vehicle information in dangerous situations)
- ISOFIX mount for the outer rear seats
- Leather-look dashboard with contrasting stitching
- LED headlights "Thor's Hammer" with high beam assistant and integrated LED daytime running lights
- Make-up mirrors for driver and passenger, illuminated
- Panoramic glass sunroof with lifting function (electric) (with integrated, continuously adjustable sunshade)
- Phone: Inductive smartphone charging system (charges smartphones that support the Qi standard wirelessly on a charging surface)
- Radio accessories: subwoofer



- Outside temperature display
- Package: Winter package (heated front seats - heated steering wheel)
- Parking brake (electric)
- Power steering, speed-dependent
- Preparation for Trailer Stability Control (TSA)
- Radio accessories: Digital radio reception (DAB+)
- Radio accessories: Two USB-C interfaces on the back of the tunnel console
- Rear center armrest (folding) (with cup holders)
- Rear headrests foldable (electrically)
- Rear seats in 40/60 ratio or completely foldable with through-loading function
- Rear window, heated
- roof edge spoiler
- Run-off Road Protection (preventive protection system in the event of unintentional departure from the road or imminent rollover, including pre-activation of the seat belt tensioners, deactivation of the battery, and door unlocking)
- Safety braking system with disc brakes all around (internally ventilated) (automatic brake system preload, brake assist and automatic hold function)
- Seat belts (active seat belts with belt tensioners, pre-activation of the belt tensioners - belt height adjustment at the front - warning tone/ display when seat belts are not fastened (for all seats))
- Seats: Driver's seat electrically adjustable (with memory function for driver's seat and exterior mirror settings (stored in radio remote control))
- Stainless steel loading sill protection in the luggage compartment
- Start/Stop technology
- Steering wheel adjustable for height and length
- Steering wheel: Multifunction buttons on the steering wheel
- Transmission: 8-speed Geartronic automatic transmission
- Upholstery: Leather/man-made leather comfort seats (including rear center armrest)
- Waterfall-design front grille in chrome
- Whiplash Protection System (WHIPS) (including dive-through protection on all seats and energy-absorbing seat padding in the front)

Extra equipment

- Driver Assistance (Adaptive Cruise Control - Emergency Stop Assist (automatic emergency stop system if warnings are ignored due to the driver failing to steer, brake, or accelerate, including activation of the hazard warning lights and automatic braking to a standstill and emergency call via Volvo On Call) - Pilot Assist (lane guidance assistant up to speeds of 130 km/h))

- Radio: High Performance Sound audio system (330 watts power - 10 speakers)
- Rain sensor
- Rear parking aid with automatic braking intervention (rear)
- Safety Assistance (Automatic emergency braking system with detection of vehicles, cyclists, pedestrians, and large animals, including intersection braking assistant and emergency braking assistant - Connected Safety - Driver Alert - Attention warning - Speed limit (variable) - Cruise control system - Lane Keeping Aid (LKA) - Active lane departure warning - Oncoming Lane Mitigation - Ready to Drive notification - Road Edge Detection - Road Sign Information (RSI) - Traffic sign recognition)
- Schuko/Type 2 (Mode 2) charging cable (7 m long, single-phase, 10 A (for connection to a standard 230 V household socket))
- Seats: Driver and passenger seats height adjustable (electric) (including manual tilt adjustment for the driver seat)
- Seats: Leg rest adjustable (electrically) for driver and passenger seat
- Seats: Lumbar support (4-way electrically adjustable) for driver and front passenger seat
- Third brake light (emergency brake lights (quick illumination of the brake lights during heavy deceleration; automatic activation of the hazard warning lights at speeds below 10 km/h))
- Tire pressure monitoring system (with tire-specific pressure loss notification)
- Volvo On Call (alerting the Volvo On Call service center at the touch of a button and additional convenience services via the smartphone app, such as locking and unlocking the vehicle, direct start of the interior pre-conditioning, and checking the high-voltage battery charge level)
- Wheels: 19" 5-spoke diamond cut/high-gloss black alloy wheels (235/55 R19 tires with 7.5 x 19" rims)
- Wheels: Tire sealant (Incl. 12-volt compressor, top speed 80 km/h)
- Window frame in chrome

- Package: Parking assistance package (front and rear parking sensors - rear view camera)
- Package: Xenium Package (High Performance Sound Pro audio system by Harman/Kardon - 600 watts of power - 14 speakers - Fresh Air subwoofer - Dirac Unison sound optimization - Advanced air quality system with fine dust filtration according to air quality standard PM2.5)
- Paint finish: Crystal White pearl effect



- Radio: Premium Sound audio system by Bowers & Wilkins (1,460 watts of power - 15 speakers - 15 channels - Double-layer (aluminum) Nautilus tweeter - Continuum cone midrange driver - Carbon/cellulose cone woofer - Fresh Air - Mica cone subwoofer - Dirac Unison - Sound optimization - Room modes (Studio, Individual Stage, Jazz Club, Gothenburg Concert Hall))
- Parking camera with 360° Surround View in conjunction with parking assistance or Connect Edition package
- Windscreen, heater

Brief expert findings

Documents submitted	At the time of the inspection, the registration certificate Part 2 (letter) was available, but the registration certificate Part 1 (certificate) was not. (Copy)
VIN comparison	The vehicle identification number (VIN) was read from the vehicle and its conformity with the submitted documents was verified during the inspection by the undersigned.
Inspection	The inspection conditions were sufficient for the assessment of the vehicle. Lifting equipment and a pit were available for examining the vehicle.
Test drive	No test drive/maneuvering was carried out during the inspection of the vehicle.
Engine function test	An engine test run was performed.

Value reducing factors

No.	Component group	Description
1	Door - rear right side	Door - dent(s) - Smart repair
2	Door - rear left side	Door - dent(s) - Smart repair
3	Front bumper	Front bumper - Scratched - Smart repair
4	Side panel - rear right side	Side panel - dent(s) - Smart repair

Wear and tear

No.	Component group	Description
1	2nd wheel set	1 alloy rim - Scratched - No deduction
2	Vehicle glazing	Windscreen - Stone chips - No deduction
3	Door - front left side	Door - dent(s) - No deduction

The vehicle shows signs of wear commensurate with its age and use.

Order/Scope of order

The order was placed to prepare a sales report for the vehicle described. This includes the following:

- Description of core relevant information about the vehicle
- Documentation of equipment features
(*Delivery by third-party service providers*)
- Documentation of damage, defects, missing parts
- Documentation of previous damage, unrepaired previous damage, repainting
- a brief visual or functional inspection of the equipment details if possible.
(*Functional tests of driver assistance systems are not included in the scope of services!*)
- a photo documentation of the vehicle



Basis for the order

This product is based on the Alphabet Fuhrpark GmbH guidelines for vehicle returns and valuations. The expert makes the explicit findings in each individual case objectively within the framework of the specified standards based on his or her own expertise.

The vehicle inspection takes place in a disassembled state.

Damage or defects that can only be detected during disassembly/diagnosis work or through advanced knowledge remain within the scope of the prognosis risk. An extended risk exists for concealed defects caused by fraudulent deception and not identifiable by the expert.

Damage or defects resulting from normal use or wear and tear of the vehicle will be accepted according to the applicable standard.

There was no explicit identification or monetary consideration of the expected features within the product.

Features which in their nature and severity slightly exceed normal use but do not constitute unacceptable damage will be documented and identified under signs of use if necessary.

Damage or defects which, according to the underlying standard, can no longer be attributed to normal use or wear and tear are listed in the product under "Depreciating Factors".

Depending on the product specification, a monetary ID can be provided. If this takes place, the costs can be 100% d or pro rata depending on the vehicle's age and mileage.

Previous damages

Apparently, no repaired previous damage could be found on the vehicle.

Comments

- Winterradsatz ist kein Bestandteil des Auslieferungsumfangs



Figure 1: Diagonal front (left)



Figure 2: Diagonal front (right)



Figure 3: Diagonal rear (left)



Figure 4: Diagonal rear (right)



Figure 5: Interior - front



Figure 6: Interior - rear



Figure 7: Instrument cluster



Figure 8: Instrument panel



Figure 9: Interior 360° view



Figure 10: Cargo area



Figure 11: VIN



Figure 12: Mounted tyres



Figure 13: Documents

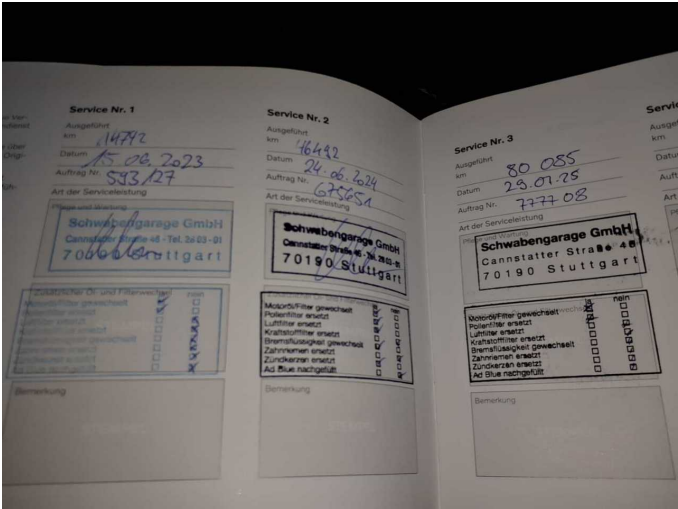


Figure 14: Documents

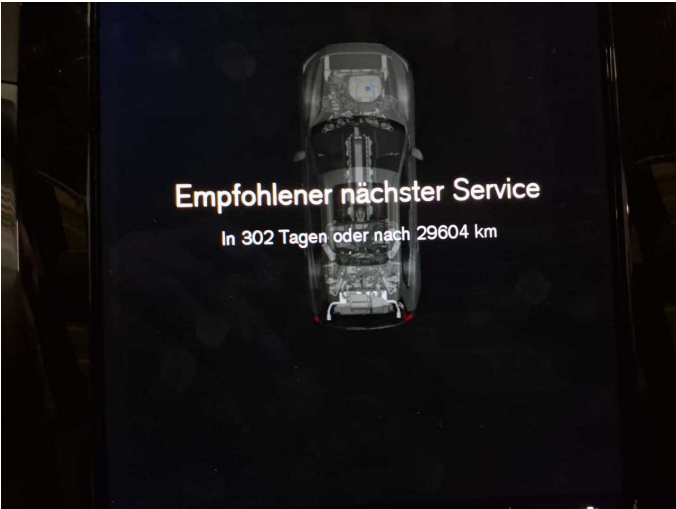


Figure 15: Documents



Figure 16: Additional tyres

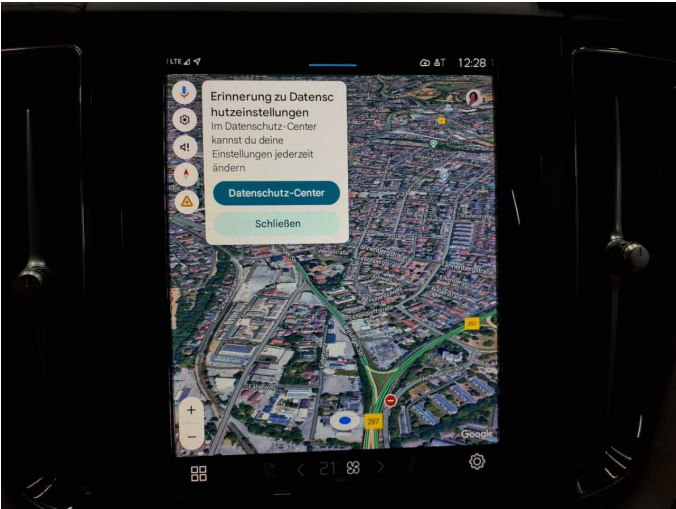


Figure 17: Navigation



Figure 18: Misc.



Figure 19: Misc.

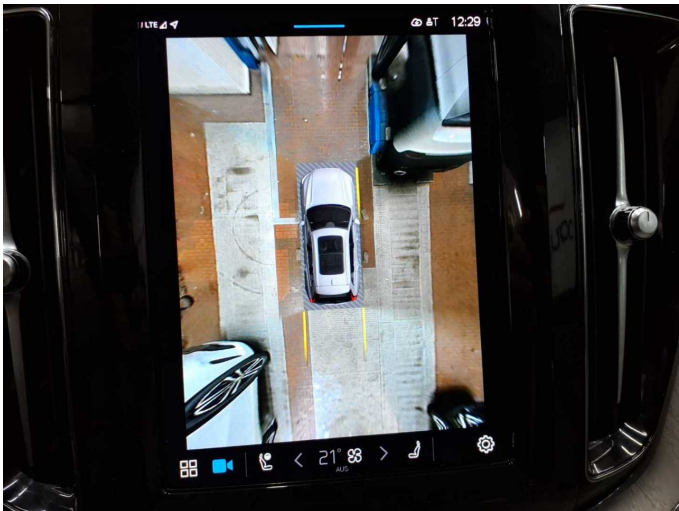


Figure 20: Misc.



Figure 21: Misc.



Figure 22: Misc.

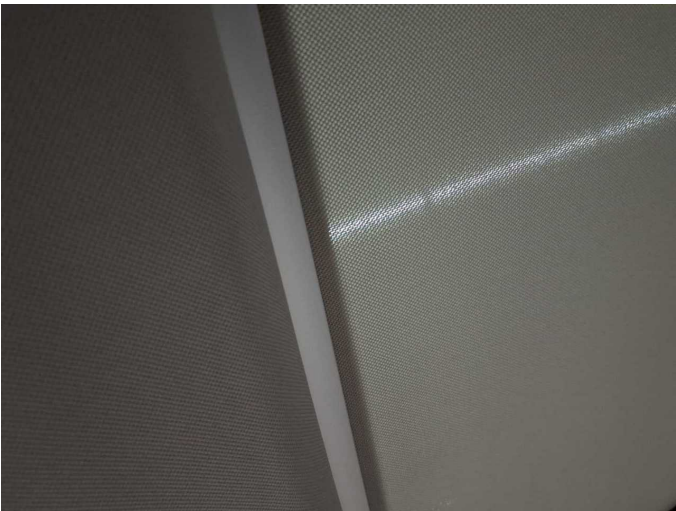


Figure 23: Misc.

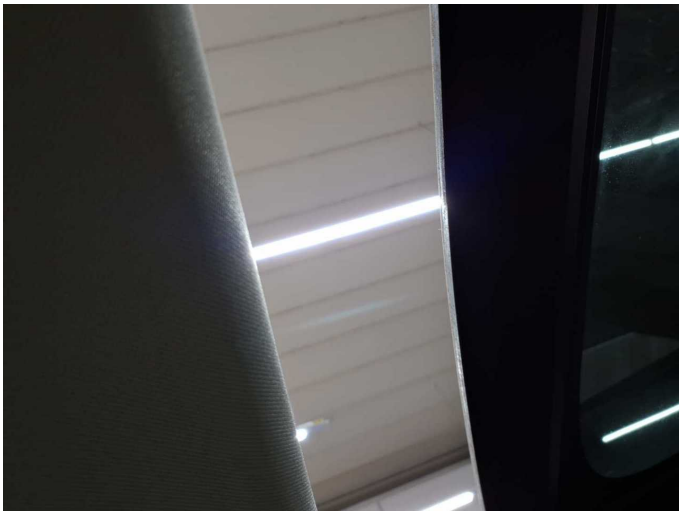


Figure 24: Misc.



Figure 25: Misc.



Figure 26: Misc.



Figure 27: Misc.



Figure 28: Misc.

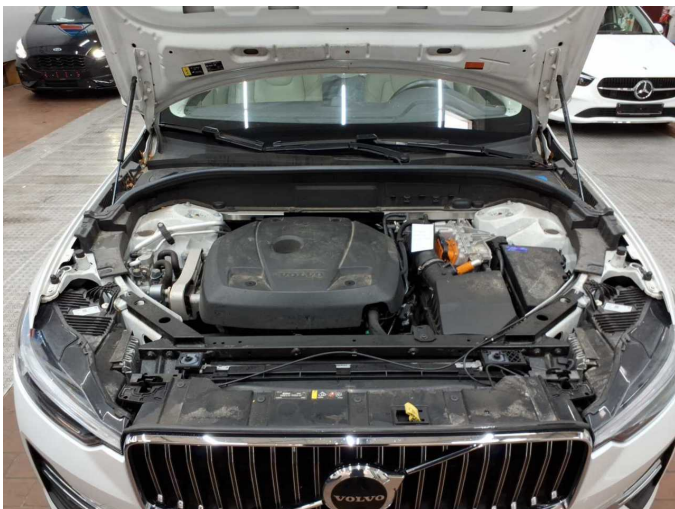


Figure 29: Misc.



Figure 30: Misc.



Figure 31: Misc.



Figure 32: Misc.



Figure 33: Misc.



Figure 34: Misc.



Figure 35: Misc.



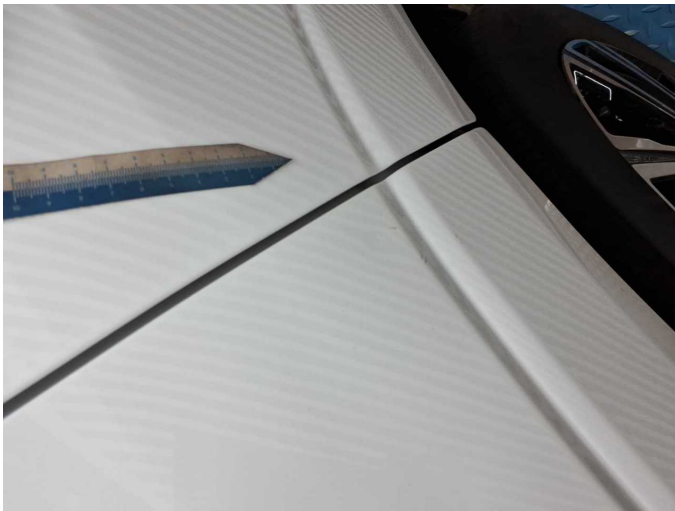
Figure 36: Misc.



Figure 37: Misc.



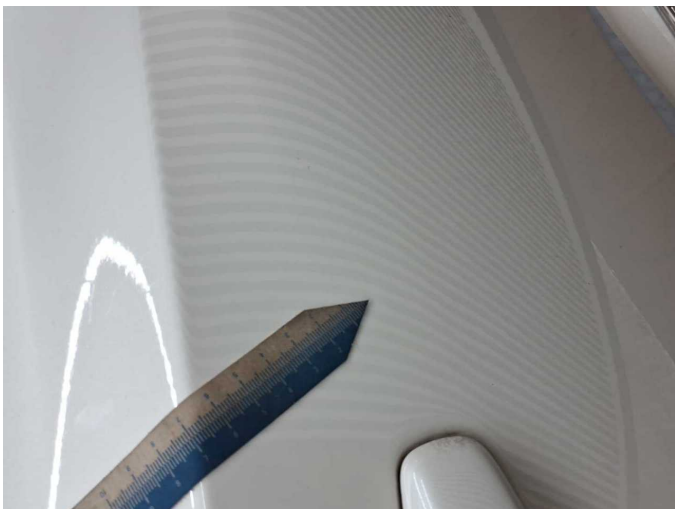
Damage 1: Door - rear right side: Door - dent(s) - Smart repair



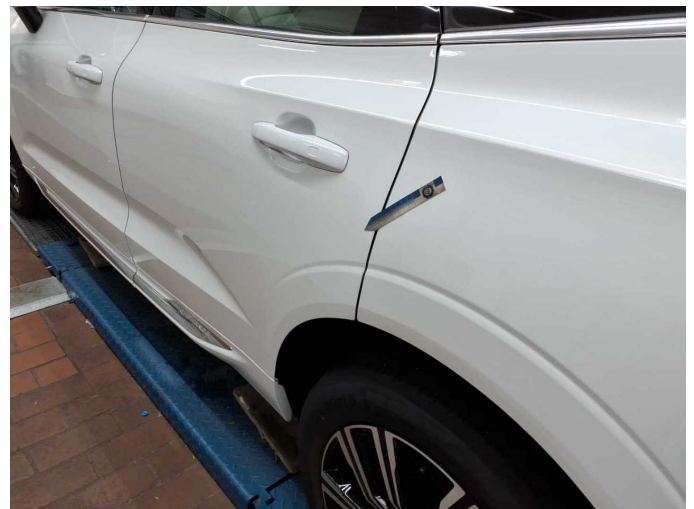
Damage 1: Door - rear right side: Door - dent(s) - Smart repair



Damage 1: Door - rear right side: Door - dent(s) - Smart repair



Damage 1: Door - rear right side: Door - dent(s) - Smart repair



Damage 2: Door - rear left side: Door - dent(s) - Smart repair



Damage 2: Door - rear left side: Door - dent(s) - Smart repair



Damage 2: Door - rear left side: Door - dent(s) - Smart repair



Damage 2: Door - rear left side: Door - dent(s) - Smart repair



Damage 3: Front bumper: Front bumper - Scratched - Smart repair



Damage 3: Front bumper: Front bumper - Scratched - Smart repair



Damage 4: Side panel - rear right side: Side panel - dent(s) - Smart repair



Damage 4: Side panel - rear right side: Side panel - dent(s) - Smart repair



Damage 4: Side panel - rear right side: Side panel - dent(s) - Smart repair



Damage 4: Side panel - rear right side: Side panel - dent(s) - Smart repair



Wear and tear 3: Door - front left side: Door - dent(s) - No deduction



Wear and tear 3: Door - front left side: Door - dent(s) - No deduction

Wartungshistorie

(gemäß Auftraggeber Informationen)



Fahrgestellnummer: LYVUZH1VDNB062667

Hersteller / Modell: VOLVO VOLVO XC60 T6 AWD Recharge Geartronic Inscription

Datum	KM-Stand	Beschreibung
30.07.2025	80.085	Motoröl b. Wartung; Ölfilter ern; Regelwartungsdienst; Wartung Sonstiges
26.06.2024	46.492	Bremsflüssigkeit; Bremsflüssigkeit ern; Luftfiltereinsatz ern; Motoröl b. Wartung; Ölfilter ern; Regelwartungsdienst; Reparatur Sonstiges; Wartung Sonstiges; Zündkerzen ern
19.06.2023	14.742	Motoröl b. Wartung; Ölfilter ern; Regelwartungsdienst; Wartung Sonstiges