



Expertise

Protocol number: 40020809
Order No. / Reference: 24848410
Inspection date: 4 Jun 2025

Manufacturer: Volvo

Model: XC60 T6 AWD Recharge Geartronic Inscription Expression

VIN: LYVUZH1VDNB021344



Vehicle details	
Manufacturer / Type / Model / Equipment	
Volvo XC60 T6 AWD Recharge Geartronic Inscription Expression	
Vehicle Identification number	LYVUZH1VDNB021344
Mileage (Read)	85,859 km
First registration	4 May 2022
Number of holders	1
Power / Engine displacement	186 kw / 1,969 ccm
Fuel type / Cylinder	Hybr.B/E ext. edition / 4
Gearbox / Number of gears	Automatic / 8
Type of drive	All-wheel drive
Type of vehicle	SUV
Colour / colour code	Denim Blue Metallic
Doors / Seats	5 / 5
Upholstery type	Cloth
Colour of upholstery	Anthracite-Black



Vehicle details

Maintenance booklet / proof	digital proof / complete	Next maintenance in	23,756 km
Last maintenance on / at	03/2025 at 79,614 km		
Key is / should be	2 / 2	FZG documents	ZB#2 (B) was available (copy), ZB#1 (S) was not available
		Letter No.	GF857126
Previous damage / Accident	Detectable	Repainting	Detectable
Inspection conditions	Sufficient	Lifting equipment / pit	yes
Test drive	Not performed	Engine function test	Performed
Manufacturer key number/ type code number	9101 / BRS 00012		
Emission standard	EURO6;WLTP;AP;PI/CI; M, N1 I	Fine dust sticker	
Permitted total weight	2,660 kg	Empty weight	

Tyres

Mounted tyres

#	Tyre size	Type of tyre	Manufacturer	Tread depth
1)	235/60 R18 107V	Summer tyres on Light alloy	Michelin	4mm / 4mm
2)	235/60 R18 107V	Summer tyres on Light alloy	Michelin	5mm / 5mm

Replacement

Typ	Tyre size	Type of tyre	Manufacturer	Tread depth
	Tirefit	Expiration date 02/2026		

Legend: Tread depth information for tires on the left is in the first place, for tires on the right is in the second place on the axle in the direction of travel

Equipment

Standard equipment

- 12 volt connection in the luggage compartment
- ABS - Anti-lock braking system
- Driver and passenger side airbags with two-stage deployment system
- Airbag, side airbags for driver and front passenger and curtain/shoulder airbags (IC) for all occupants
- Electrically foldable exterior mirrors
- Outside temperature display
- Hill Start Assist (HSA)
- Indicators (LED) integrated in exterior mirrors
- On-board computer
- Chrome applications on the rear of the vehicle
- Chrome trim strip in the door sill area with Recharge lettering
- Aluminum roof rails (integrated)
- Drive Mode
- Aluminum door sills with Recharge lettering, front
- Electronic differential lock
- Electric windows front and rear
- Automatic brake
- Luggage compartment partition net
- Google Services with navigation function
- Rear window, heated
- Interior lighting
- ISOFIX mount for the outer rear seats
- Child safety lock (rear doors)
- Headrests (5) front and rear
- Rear headrests foldable
- Charging cable Schuko/Type 2 (Mode 2)
- Load compartment blind
- Steering wheel adjustable for height and length
- Make-up mirrors for driver and passenger, illuminated
- Front center armrest with integrated storage compartment and cup holders
- Radio: High Performance Sound audio system
- Radio accessories: subwoofer
- Rain sensor
- Tire pressure monitoring system
- Wheels: 18" 5-twin-spoke light alloy wheels, diamond cut/graphite look
- Safety Assistance
- Whiplash Protection System (WHIPS)
- Safety braking system with disc brakes all around (internally ventilated)
- Seats: Lumbar support (2-way electrically adjustable) for driver and front passenger seat
- Phone: Inductive smartphone charging system
- Glazing: Color glazing
- 12 volt connection at the front
- Acoustic Vehicle Alerting System (AVAS)
- Airbag, passenger side can be switched off
- Airbag, knee airbag for driver
- All-wheel drive (AWD)
- Android infotainment system
- Exterior mirrors electrically adjustable and heated
- Hill Descent Control HDC
- Condensation sensor for automatic activation of the defroster function
- Brake light, third
- Chrome applications in the front bumper
- CleanZone air quality system with activated carbon filter
- roof edge spoiler
- Digital Instrumentation 2nd Gen.
- Parking aid, rear with automatic braking intervention (rear)
- Electronic Stability Control (ESC) - Electronic Stability Control
- window frame in chrome
- Waterfall-design front grille in chrome
- Transmission: 8-speed Geartronic automatic transmission
- Automatic tailgate
- Interior and exterior mirrors automatically dimming
- Intelligent Driver Information System
- Keyless Drive
- Automatic climate control with separate temperature control for driver and front passenger
- Loading box under the load compartment floor
- Stainless steel loading sill protection in the luggage compartment
- Steering wheel: Multifunction buttons on the steering wheel
- Rear center armrest (folding)
- Panoramic glass sunroof with lifting function (electric)
- Parking brake (electric)
- Radio accessories: Digital radio reception (DAB+)
- Radio accessories: Two USB-C interfaces on the back of the tunnel console
- Run-off Road Protection
- Wheels: Tire sealant
- Rear seats in 40/60 ratio or completely foldable with through-loading function
- Power steering, speed-dependent
- Seat belts
- Seats: Driver and passenger seats height adjustable (electrically)
- Start/Stop technology
- First aid kit and warning triangle
- Lashing eyes in the luggage compartment (foldable)
- Preparation for Trailer Stability Control (TSA)



- Volvo On Call
- Immobiliser

- Central locking with two radio remote controls and integrated emergency keys

Extra equipment

- Windscreen, heater
- Package: Lighting Package (Headlight cleaning system - Full LED headlights "Thor's Hammer" Active High Beam with extended high beam, dynamic cornering light, intelligent high beam assist with adaptive headlight range control and integrated LED daytime running lights - Ambient lighting Extended ambient lighting (multi-colored) f/r Luggage compartment lid Exit lights f/r Illuminated door compartment openers f/r Illuminated cup holders f/r Footwell lighting h Reading lights h.)
- Paintwork: metallic paint
- Package: Winter package (heated front seats - heated steering wheel)
- Upholstery: Textile premium comfort seats
- protection package
- Seats: Driver's seat electrically adjustable (with memory function for driver's seat and exterior mirror settings (stored in radio remote control))

Brief expert findings

Documents submitted	At the time of the inspection, the registration certificate part 2 (letter) was available, but the registration certificate part 1 (certificate) was not available. (Copy)
VIN comparison	The vehicle identification number (VIN) was read and the undersigned verified that it matched the documents submitted during the inspection.
Inspection	The inspection conditions were sufficient for the assessment of the vehicle. Lifting equipment and a pit were available for examining the vehicle.
Test drive	No test drive/maneuvering was carried out during the inspection of the vehicle.
Engine function test	An engine test run was performed.

Value reducing factors

No.	Component group	Description
1	Bonnet	Insulation lining - Missing - Replace
2	Side panel - rear left side	Side panel (Farbnebel+Pickel) - Unprofessionally repaired - Paint
3	Bonnet	Bonnet (Sandstrahleffekt) - Scratch(es) - Paint
4	Front bumper	Front bumper - Scratch(es) - Paint

Wear and tear

No.	Component group	Description
1	Vehicle glazing	Windscreen - Stone chips - No deduction

The vehicle shows signs of wear commensurate with its age and use.

Previous damages

No.	Previous damage	Extent of damage (Net)
1	Side - left, Provided by user / customer, from 16 Apr 2025	4.236,08 €

Repainting

No.	Repainting
1	Roof rail - left side, Mudguard - left side, Door - front left side, Professionally carried out
2	Side panel - rear left side, Unprofessionally carried out

Paint coat thickness measurement



Roof rail - left side	181 µm	Mudguard - left side	248 µm
Side panel - rear left side	242 µm	Door - front left side	191 µm

Order/Scope of order

The order was placed to prepare a sales report for the vehicle described. This includes the following:

- Description of core relevant information about the vehicle
- Documentation of equipment features
(*Delivery by third-party service providers*)
- Documentation of damage, defects, missing parts
- Documentation of previous damage, unrepaired previous damage, repainting
- a brief visual or functional inspection of the equipment details if possible.
(*Functional tests of driver assistance systems are not included in the scope of services!*)
- a photo documentation of the vehicle

Basis for the order

This product is based on the Alphabet Fuhrpark GmbH guidelines for vehicle returns and valuations. The expert makes the explicit findings in each individual case objectively within the framework of the specified standards based on his or her own expertise.

The vehicle inspection takes place in a disassembled state.

Damage or defects that can only be detected during disassembly/diagnosis work or through advanced knowledge remain within the scope of the prognosis risk. An extended risk exists for concealed defects caused by fraudulent deception and not identifiable by the expert.

Damage or defects resulting from normal use or wear and tear of the vehicle will be accepted according to the applicable standard.

There was no explicit identification or monetary consideration of the expected features within the product.

Features which in their nature and severity slightly exceed normal use but do not constitute unacceptable damage will be documented and identified under signs of use if necessary.

Damage or defects which, according to the underlying standard, can no longer be attributed to normal use or wear and tear are listed in the product under "Depreciating Factors".

Depending on the product specification, a monetary ID can be provided. If this takes place, the costs can be 100% d or pro rata depending on the vehicle's age and mileage.

Previous damages

According to available information previous damages were repaired at the vehicle. Traces of repairs, which allow conclusions about the area of repair, were not recognizable during the inspection.



Figure 1: Diagonal front (left)



Figure 2: Diagonal front (right)



Figure 3: Diagonal rear (left)



Figure 4: Diagonal rear (right)



Figure 5: Interior - front



Figure 6: Interior - rear

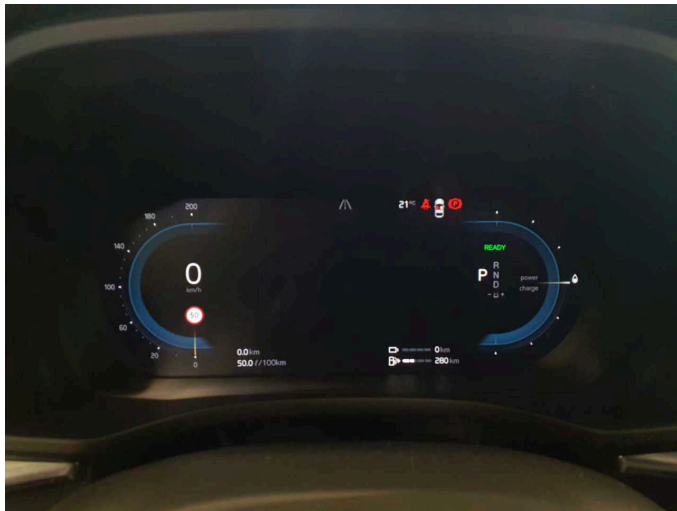


Figure 7: Instrument cluster



Figure 8: Instrument panel



Figure 9: interior 360° view



Figure 10: Cargo area



Figure 11: Cargo area



Figure 12: VIN



Figure 13: Mounted tyres



Figure 14: Documents

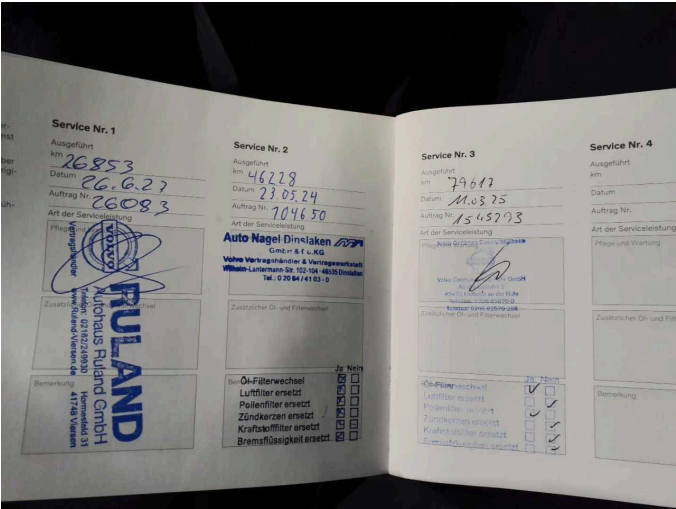


Figure 15: Documents

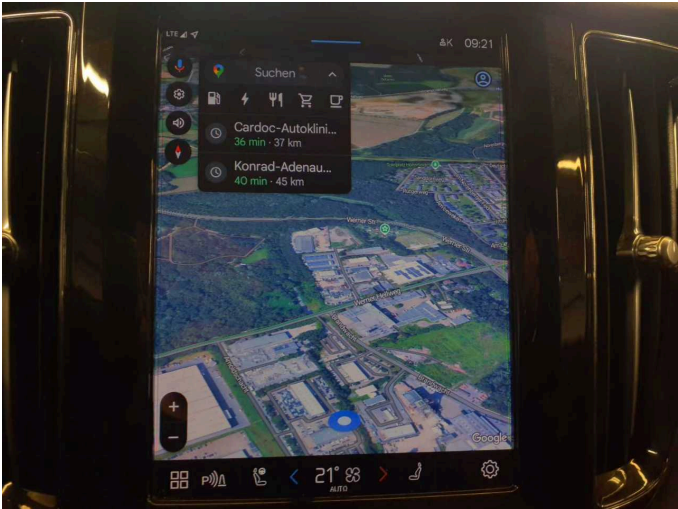


Figure 16: Navigation



Figure 17: Misc.



Figure 18: Misc.

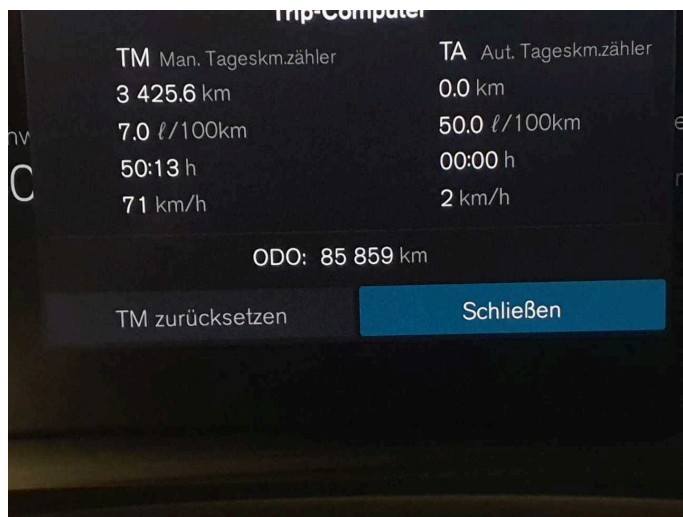


Figure 19: Misc.

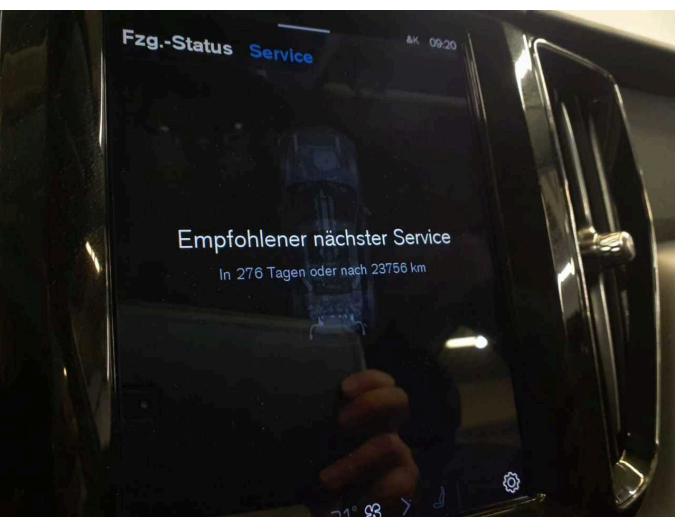


Figure 20: Misc.



Figure 21: Misc.

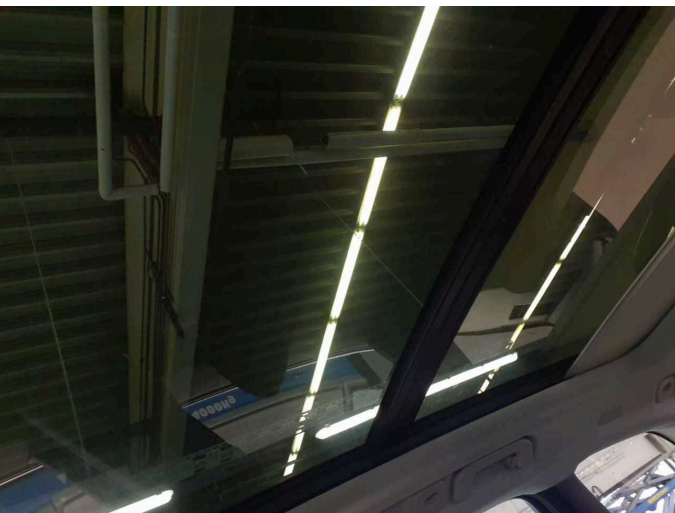


Figure 22: Misc.



Figure 23: Misc.



Figure 24: Misc.



Figure 25: Misc.



Figure 26: Misc.



Figure 27: Misc.



Figure 28: Misc.



Figure 29: Misc.



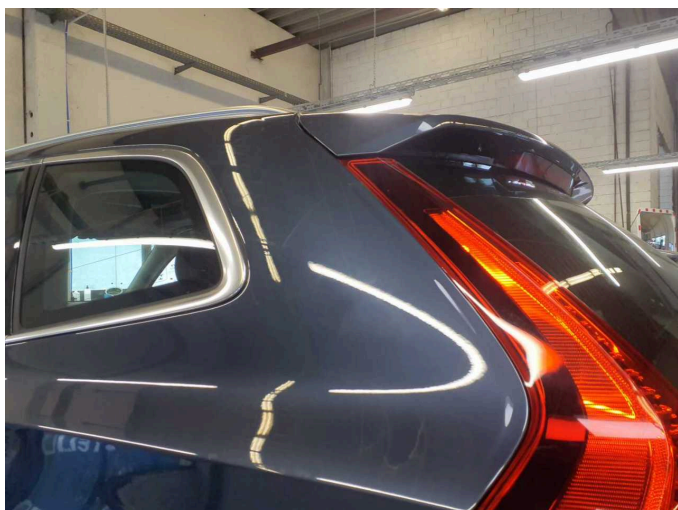
Figure 30: Misc.



Damage 1: Bonnet: Insulation lining - Missing - Replace



Damage 1: Bonnet: Insulation lining - Missing - Replace



Damage 2: Side panel - rear left side: Side panel (Farbnebel+Pickel) - Unprofessionally repaired - Paint



Damage 2: Side panel - rear left side: Side panel (Farbnebel+Pickel) - Unprofessionally repaired - Paint



Damage 2: Side panel - rear left side: Side panel (Farbnebel+Pickel) - Unprofessionally repaired - Paint



Damage 3: Bonnet: Bonnet (Sandstrahleffekt) - Scratch(es) - Paint



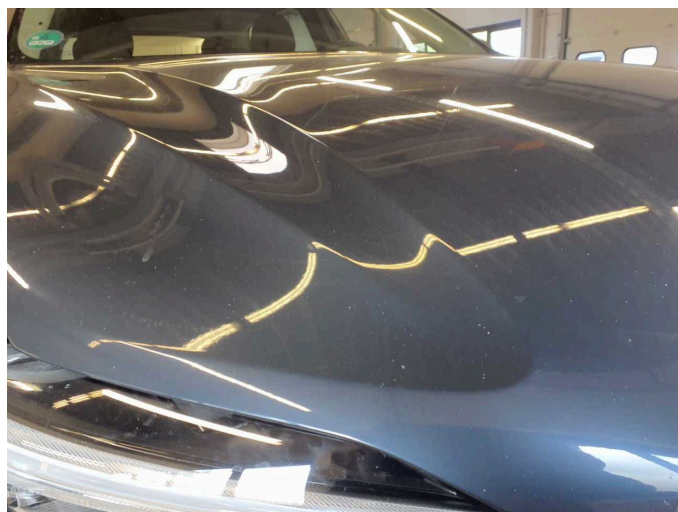
Damage 3: Bonnet: Bonnet (Sandstrahleffekt) - Scratch(es) - Paint



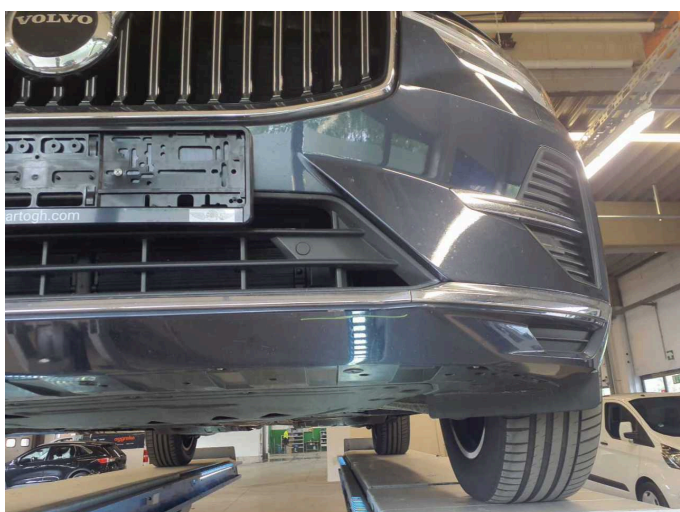
Damage 3: Bonnet: Bonnet (Sandstrahleffekt) - Scratch(es) - Paint



Damage 3: Bonnet: Bonnet (Sandstrahleffekt) - Scratch(es) - Paint



Damage 3: Bonnet: Bonnet (Sandstrahleffekt) - Scratch(es) - Paint



Damage 4: Front bumper: Front bumper - Scratch(es) - Paint



Damage 4: Front bumper: Front bumper - Scratch(es) - Paint



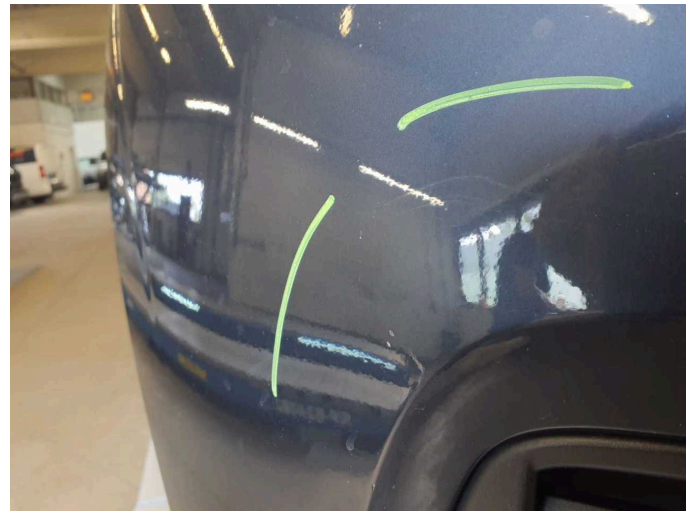
Damage 4: Front bumper: Front bumper - Scratch(es) - Paint



Damage 4: Front bumper: Front bumper - Scratch(es) - Paint



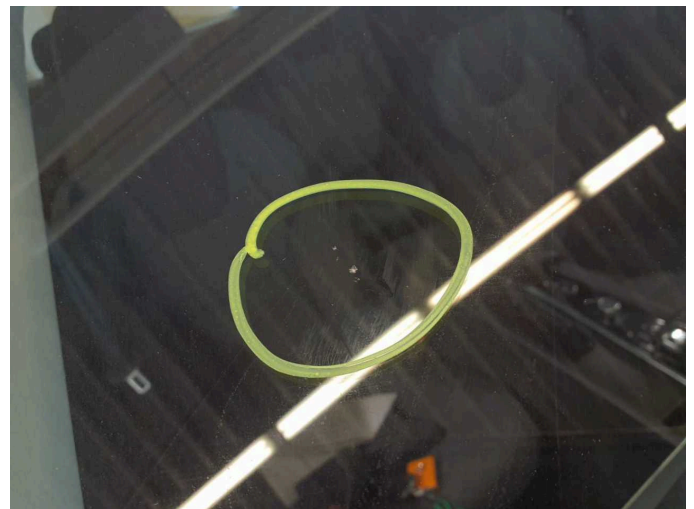
Damage 4: Front bumper: Front bumper - Scratch(es) - Paint



Damage 4: Front bumper: Front bumper - Scratch(es) - Paint



Wear and tear 1: Vehicle glazing: Windscreen - Stone chips - No deduction



Wear and tear 1: Vehicle glazing: Windscreen - Stone chips - No deduction



Repainting 1: Roof rail - left side, Mudguard - left side, Door - front left side



Repainting 1: Roof rail - left side, Mudguard - left side, Door - front left side



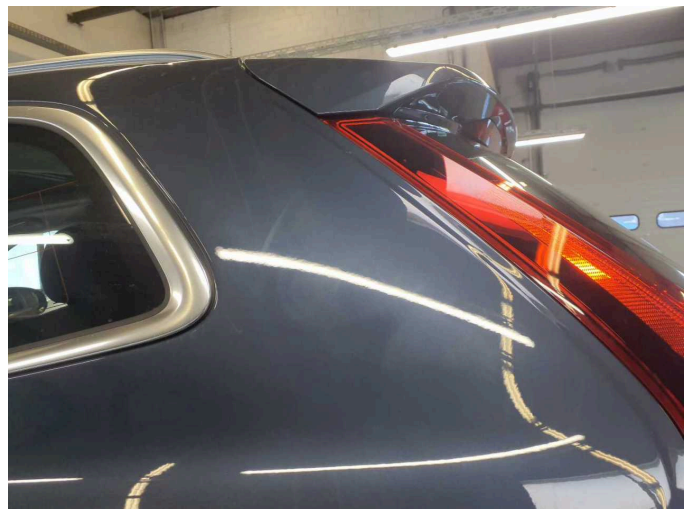
Repainting 1: Roof rail - left side, Mudguard - left side, Door - front left side



Repainting 2: Side panel - rear left side



Repainting 2: Side panel - rear left side



Repainting 2: Side panel - rear left side